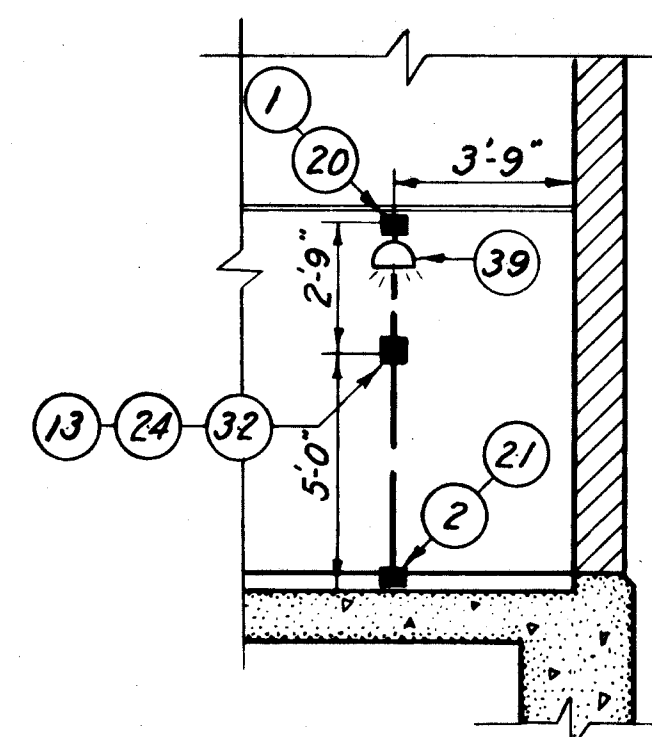
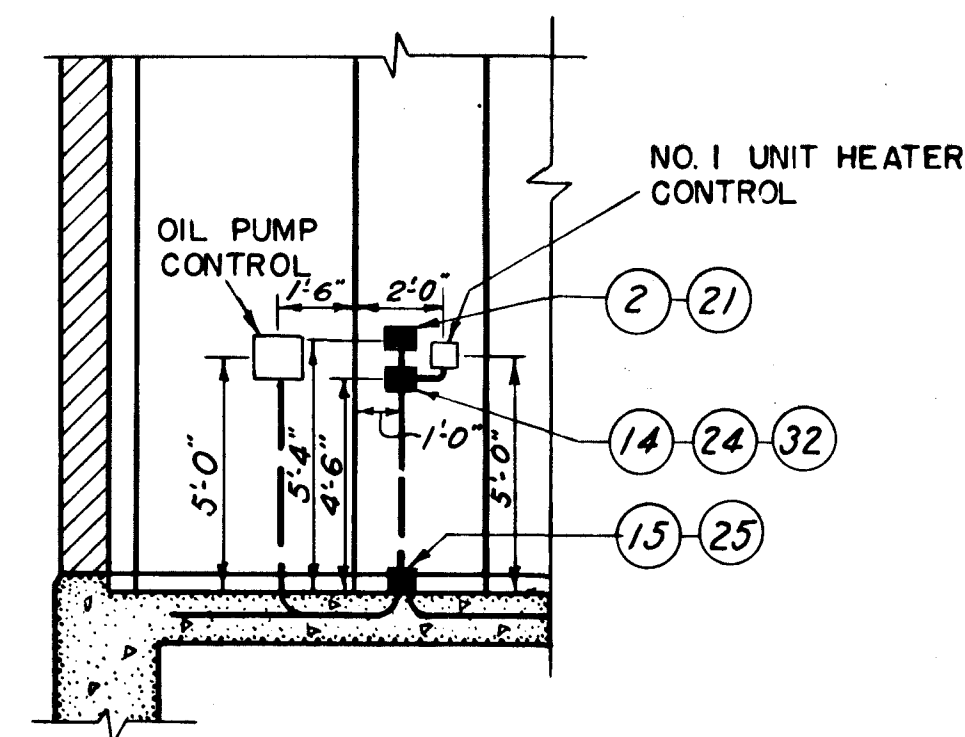


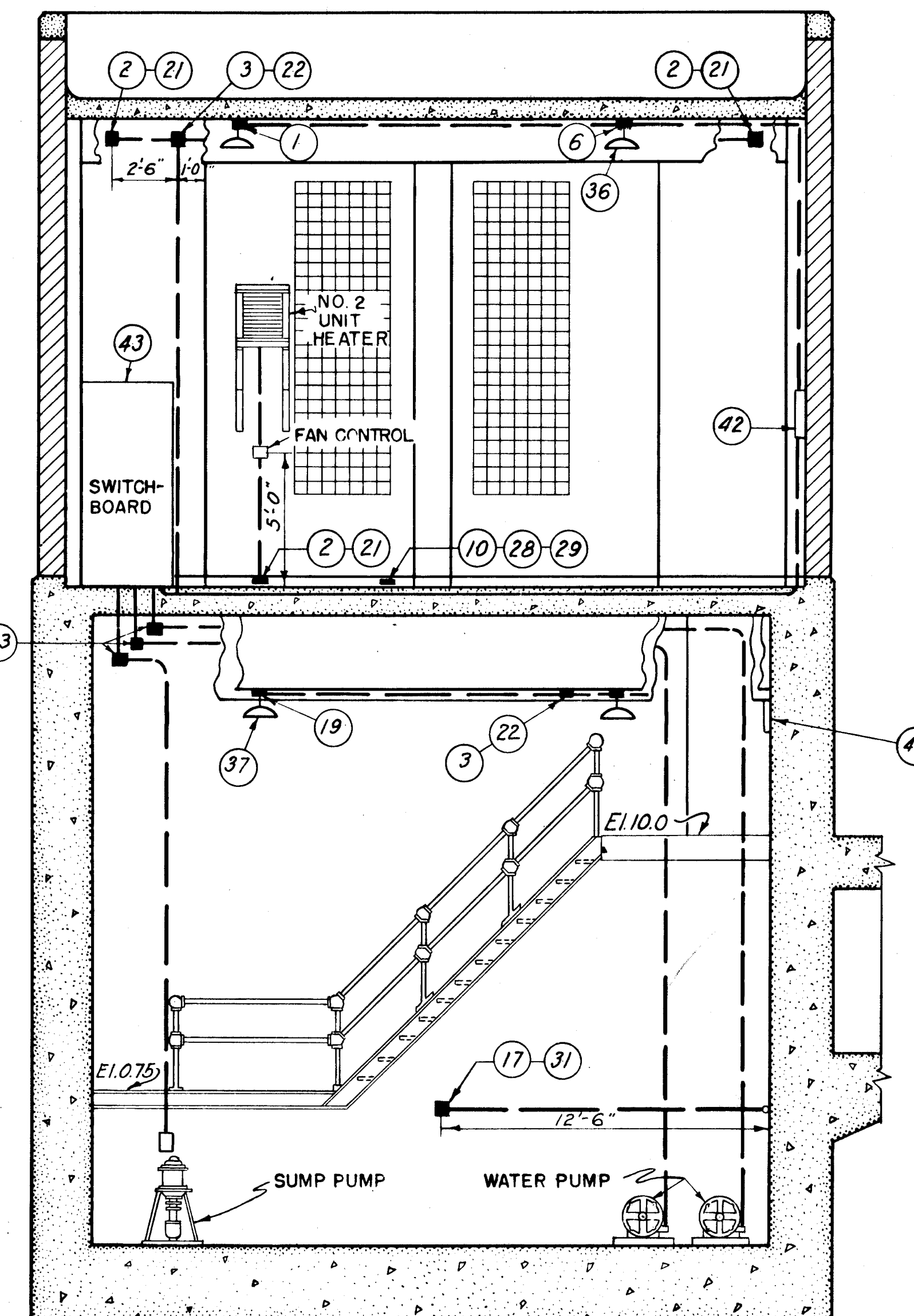
SECTION A
57
SCALE: $\frac{1}{4}'' = 1'-0''$



SECTION C
57
SCALE: $\frac{1}{4}'' = 1'-0''$



SECTION D
57
SCALE: $\frac{1}{4}'' = 1'-0''$



SECTION B
57
SCALE: $\frac{1}{4}'' = 1'-0''$

NOTES

Figures in circles refer to items listed in the Bill of Material.
Concealed conduits are indicated by solid lines.
Exposed conduits are indicated by broken lines.
No conduit shall be smaller than $\frac{3}{4}''$.
Locate center-line of engine-room receptacles 3" above floor.
All conduits, fittings, controls, and motors below Elevation +9.5 shall be waterproof.
The electric light and power system will be paid for under Item No. 20.

CONNECTICUT RIVER FLOOD CONTROL
NORTH MEADOWS PUMPING STATION
FISCAL YEAR 1939 SECTION
ELECTRIC LIGHT AND POWER SYSTEM NO. 2
HARTFORD, CONN.

CONNECTICUT RIVER CONNECTICUT
IN 62 SHEETS SCALE: 1/4" = 1 FT. SHEET NO. 58

U. S. ENGINEER OFFICE, PROVIDENCE, R. I., FEB. 1939

SUBMITTED APPROVED
HEAD, DESIGN SECTION CHIEF, F.C. ENGINEERING DIV. DISTRICT ENGINEER

DESIGNED DRAWN BY: M. B. M.
TRACED BY: H. A. V.
CHECKED BY: J. C. S.

FILE NO. CT-4-1306

12/31/35	As built			
DATE	REVISION	REV. BY	CK. BY	AP. BY