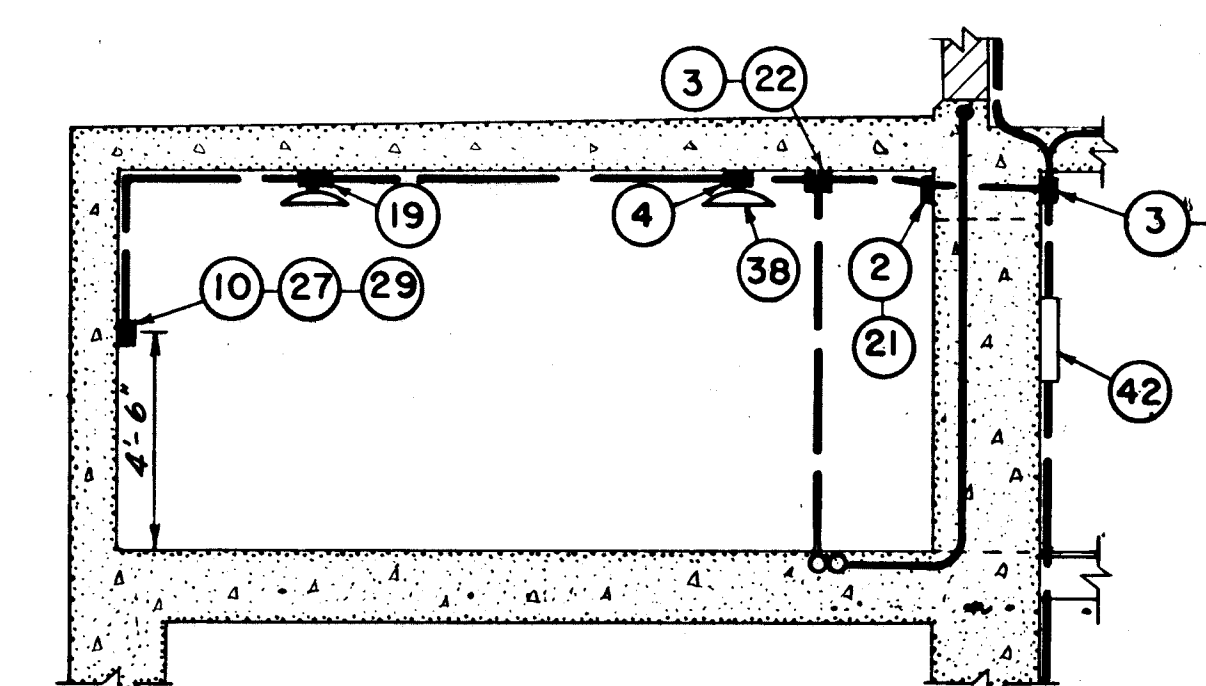


SCALE: $\frac{1}{4}'' = 1' - 0''$

SCALE: $\frac{1}{4}'' = 1' - 0''$



SCALE: $\frac{1}{4}'' = 1' - 0''$

*Figures in circles refer to items listed in the Bill of Material.
Concealed conduits are indicated by solid lines.
Exposed conduits are indicated by broken lines.
No conduit shall be smaller than 2".
Locate center line of engine room receptacles 3" above floor.
The electric light and power system will be paid for under
Item No. 20.*

| | | | | |
|----------|--------------------|--------|-------|-----|
| | | | | |
| 12-31-45 | As built revisions | | | |
| DATE | REVISION | REVIEW | CK BY | APP |

| | | | | | |
|---|--|---------------------------------|---------------|------------------------------|--|
| CONNECTICUT RIVER | | | FLOOD CONTROL | | |
| NORTH MEADOWS PUMPING STATION | | | | | |
| FISCAL YEAR 1939 SECTION | | | | | |
| ELECTRIC LIGHT AND POWER SYSTEM NO. 1 | | | | | |
| HARTFORD, CONN. | | | | | |
| CONNECTICUT RIVER | | | CONNECTICUT | | |
| IN 62 SHEETS | | SCALE: 1/4 IN. = 1 FT. | | SHEET NO. 57 | |
| | | | | | |
| U. S. ENGINEER OFFICE, PROVIDENCE, R. I.; | | | | FEB. 1939 | |
| SUBMITTED: | | APPROVAL RECOMMENDED: | | APPROVED: | |
| <i>Harold B. Nichols</i> | | <i>J. S. Burns</i> | | <i>M. Murphy</i> | |
| SENIOR ENGINEER | | PRINCIPAL ENGINEER | | LEGAL CORRESPONDING ENGINEER | |
| HEAD, DESIGN SECTION | | CHIEF, F.C. ENGINEERING DIV. | | DISTRICT ENGINEER | |
| DESIGNED: | | DRAWN BY: W. B. M. | | FILE NO. CT-4-1305 | |
| <i>H. G. K. Kupper</i> | | CHECKED BY: <i>E. H. Kupper</i> | | | |