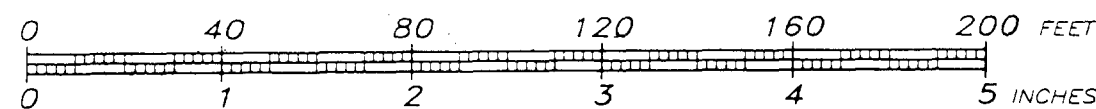


SCALE: 1"=40'



BOCE BARLOW WAY

THIS MAP PRODUCED BY
ORIGINAL INK DRAWING ON
POLY FILM OR LINEN
REESE G. ROBERTS
48 GLORIA ST.
WINDSOR, CT. 06095

The portions of Boce Barlow Way
& Weston Street shown on this map
are established public streets of
the City of Hartford.

O. Blint
O. Blint, Survey Supervisor

NOTE:

- THIS MAP AND SURVEY WERE PREPARED PURSUANT TO THE REGULATIONS OF CONNECTICUT STATE AGENCIES SECTIONS 20-300b-1 THROUGH 20-300b-20, AS INCLUDED IN THE "STANDARDS FOR SURVEYS AND MAPS IN THE STATE OF CONNECTICUT" ADOPTED BY THE CONNECTICUT ASSOCIATION OF LAND SURVEYORS, INC. ON SEPTEMBER 26, 1996. PER THESE REGULATIONS AND STANDARDS:
 - THE TYPE OF SURVEY PERFORMED AND THE MAPPED FEATURES DEPICTED HEREON ARE IN ACCORDANCE WITH THE REQUIREMENTS OF A "PROPERTY SURVEY".
 - EXISTING PROPERTY LINES DEPICTED HEREON PRESENT PROFESSIONAL OPINIONS OF THE LAND SURVEYOR WHICH ARE CONSISTENT WITH THE "RESURVEY" BOUNDARY DETERMINATION CATEGORY.
 - PROPOSED PROPERTY LINES DEPICTED HEREON PRESENT PROFESSIONAL OPINIONS OF THE LAND SURVEYOR WHICH ARE CONSISTENT WITH THE "ORIGINAL SURVEY" BOUNDARY DETERMINATION CATEGORY.
 - THIS MAP, WITH THE BEARINGS AND DISTANCES DEPICTED HEREON, PRESENTS THE RESULTS OF MEASUREMENTS WHICH WERE MADE UPON THE GROUND, AND IS IN ACCORDANCE WITH THE HORIZONTAL ACCURACY STANDARDS OF A "CLASS A-2" SURVEY.
- REFERENCE IS HEREBY MADE TO THE FOLLOWING MAPS AND SURVEYS:
 - CITY OF HARTFORD, MAP SHOWING LAND AND EASEMENTS RELEASED TO CITY OF HARTFORD BY THE STATE OF CONNECTICUT, JENNINGS ROAD, SCALE: 1"=40', SHEET 2 OF 2, JAN. 1989, REVISED: JAN. 10, 1989, OLIVER PAQUETTE, L.S., TOWN CLERK MAP NUMBER 1957 - 2 OF 2.
 - SURVEY MAP SHOWING LEASE PROPERTY, HARTFORD JAI ALAI, WESTON STREET, HARTFORD, CONNECTICUT, SCALE: 1"=40', DATE: AUG. 14, 1986, BY IGOR VECHESLOFF, L.S., TOWN CLERK MAP NUMBER 1565.
 - CITY OF HARTFORD, CONNECTICUT DEPARTMENT OF PUBLIC WORKS, BUREAU OF ENGINEERING SERVICES, PARCELS TO BE EXCHANGED BETWEEN THE CITY OF HARTFORD & BERENSON'S HARTFORD JAI-ALAI, WESTON STREET, HARTFORD, CT., SCALE: 1"=100', DATE: JULY 18, 1985, OSWALD R. BLINT, L.S., TOWN CLERK MAP NUMBER 1484.
 - PROPERTY TO BE ACQUIRED BY BERENSON PARI-MUTUEL, INC., HARTFORD, CONNECTICUT, SCALE: 1"=40', DRAWINGS NUMBER 1, 2 & 3 OF 4, DATE: MARCH 17, 1981, BY IGOR VECHESLOFF, L.S., TOWN CLERK MAP NUMBERS 1138, 1138-1 & 1138-2.
 - PROPERTY TO BE ACQUIRED BY LENNEL INC. FROM ANTHONY G. RUSSO ET AL, HARTFORD, CONNECTICUT, SCALE: 1"=100', DATE: FEB. 1974, REVISED: MAR. 13, 1974, MAR. 26, 1974 & JUNE 26, 1974, BY DAVIS & HOWES - C. DAVIS, L.S., TOWN CLERK MAP NUMBER 981.
- UNDERGROUND UTILITIES DEPICTED HEREON ARE LOCATED PER INFORMATION PROVIDED BY OTHERS. THEIR TRUE LOCATIONS MAY VARY FROM THOSE INDICATED, AND ALL UNDERGROUND UTILITIES MAY NOT BE SHOWN. IT IS THE CONTRACTOR'S RESPONSIBILITY TO: UTILIZE THE "CALL BEFORE YOU DIG NUMBER" (1-800-922-4455), VERIFY THE LOCATION OF UNDERGROUND UTILITIES, AND RESOLVE ANY CONFLICTS, PRIOR TO STARTING ANY CONSTRUCTION.
- THE PAVED DRIVEWAY, DRAINAGE PIPES, AND OTHER POSSIBLE UNDERGROUND UTILITIES WHICH NOW CROSS PROPOSED PROPERTY LINES BETWEEN PARCEL A AND OTHER LAND OF BERENSON PARI-MUTUEL, INC. ARE TO BE RELOCATED SO AS NOT TO CROSS PROPERTY LINES. NO EASEMENTS OR RIGHTS OF WAY FOR THE USE AND MAINTENANCE OF EXISTING INFRASTRUCTURE ARE INTENDED.

CHAIN LINK FENCE

339.58'

S 66°33'50" E

250.00'

25' BUILDING LINE

BITUMINOUS PAVEMENT

HARTFORD CITY MERESTONE FOUND ON INTERSECTING TWO FOOT OFFSETS TO STREET LINES

OTHER LAND OF
BERENSON PARI-MUTUEL, INC

PROPOSED PROPERTY LINE
(SEE NOTE No. 4)

PARCEL A
AREA = 37,491 SQUARE FEET

BITUMINOUS PAVEMENT

BIT. CURB

BITUMINOUS PAVEMENT

RAILROAD SPIKE (SET)
IN PAVED DRIVEWAY

N 66°33'50" W

PROPOSED PROPERTY LINE
(SEE NOTE No. 4)

OTHER LAND OF
BERENSON PARI-MUTUEL, INC

BITUMINOUS PAVEMENT

BITUMINOUS PAVEMENT

LIGHTING POLE

MANHOLE

LIGHTING POLE

CATCH BASIN

FLOW

IRON PIPE (SET)

760.69'

910.69'

CONCRETE APRON

BIT. CURB

BITUMINOUS PAVEMENT

BIT. CURB

BITUMINOUS PAVEMENT

BIT. CURB

BITUMINOUS PAVEMENT

BIT. CURB

BITUMINOUS PAVEMENT

BIT. CURB

BITUMINOUS PAVEMENT

BIT. CURB

BITUMINOUS PAVEMENT

BIT. CURB

BITUMINOUS PAVEMENT

STREET

WESTON STREET

AS DERIVED FROM
CONNECTICUT GRID
CONTROL POINTS FOR
BOCE BARLOW WAY & REV. ROBERT A. MADDY

PROPERTY SURVEY AND DIVISION MAP
OF A PORTION OF PROPERTY OF
BERENSON PARI-MUTUEL, INC.

TO BE CONVEYED TO
TACALA NORTH, INC.

WESTON STREET AND BOCE BARLOW WAY
HARTFORD, CONNECTICUT

SCALE: 1"=40' DATE: FEBRUARY 20, 1997

ENGINEERING BY
DLS CONSULTING
ENGINEERING SERVICES

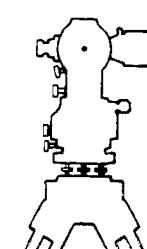
DAVID L. SPEAR, P.E.
928 WORTHY STREET
WINDSOR, CT 06095
TELEPHONE (860) 298-9315

TO MY KNOWLEDGE AND BELIEF,
THIS MAP IS SUBSTANTIALLY
CORRECT AS NOTED HEREON.

Reese G. Roberts
REESE G. ROBERTS, LAND SURVEYOR
CONNECTICUT LICENSE NUMBER 8505

SEAL

THE EMBOSSED SEAL OF THE LAND
SURVEYOR MUST BE AFFIXED
HERE FOR THIS MAP AND THE
SURVEYOR'S SIGNATURE
TO BE VALID.



SURVEYING BY
REESE G. ROBERTS
LICENSED LAND SURVEYORS

48 GLORIA STREET
WINDSOR, CONNECTICUT
TELEPHONE (860) 688-6628

RECEIVED BY
Mar 10 4 18 PM '97