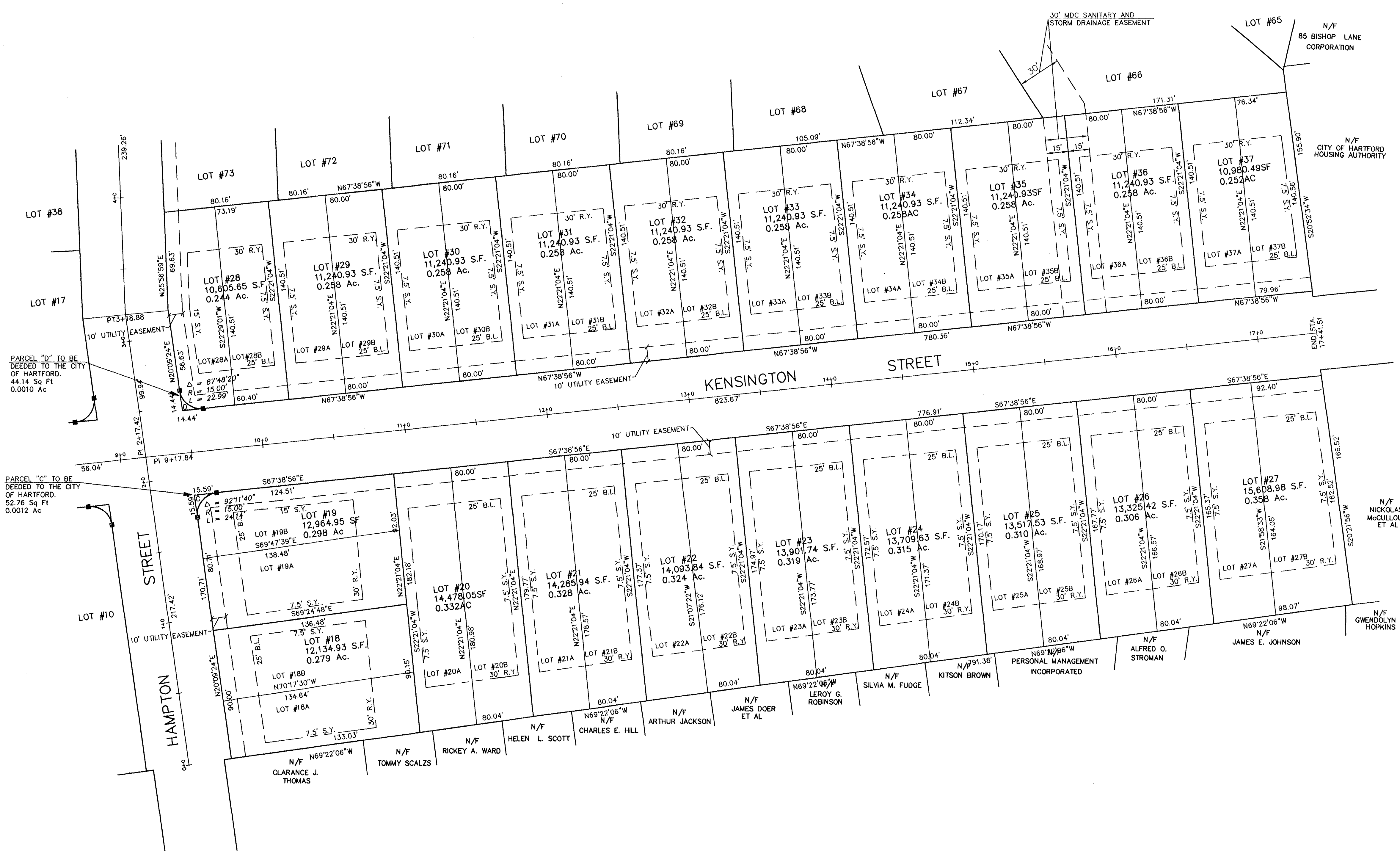
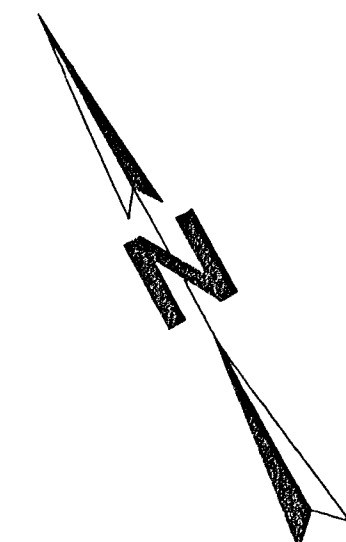


RECEIVED  
DEC 2 12 11 53



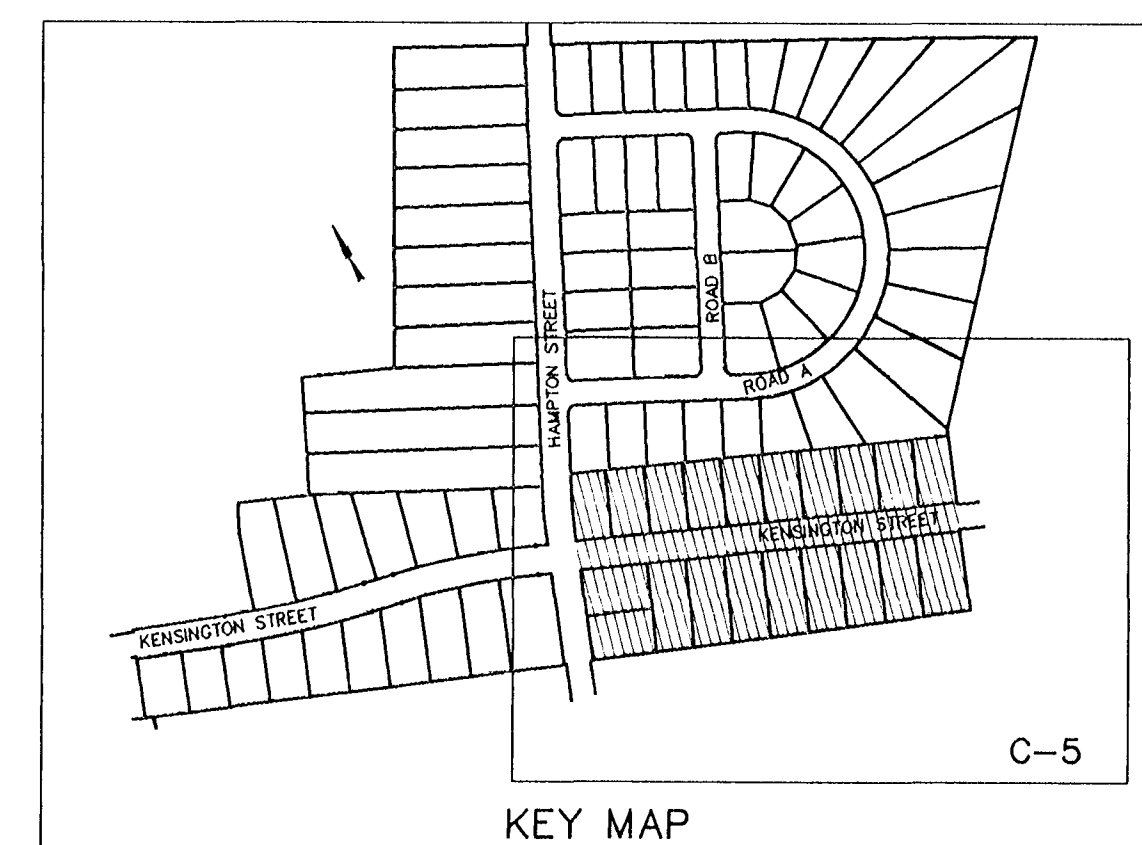
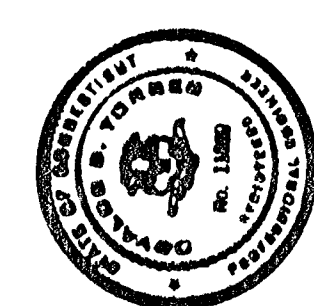
### LEGEND

- N/F NOW OR FORMERLY
- PROPERTY LINE
- INDIVIDUAL LOT LINE
- B.L. BUILDING LINE
- S.Y. SIDE YARD
- R.Y. REAR YARD
- R.O.W. RIGHT OF WAY
- S.F. SQUARE FEET
- AC. ACRES
- MONUMENT TO BE INSTALLED BY CONTRACTOR

### SITE DATA

TOTAL SITE AREA	36.02 ACRES
TOTAL WETLANDS	0 ACRES
TOTAL FLOOD PLAIN	0 ACRES
EXISTING/PROPOSED ZONE	R-4
MINIMUM LOT SIZE	6000 SQ FT
TOTAL PROPOSED LOTS	95
BUILDING LINE	15/25/40 (SEE NOTE 3)
MINIMUM REAR YARD	30'
MINIMUM SIDE YARD	5'15 OR 1/4 BLDG HT. (SEE NOTE 4)
MINIMUM FRONTAGE ON STREET	50'

NOTE: SEE SHEET C-2 FOR GENERAL NOTES



COMMISSION ON THE CITY PLAN  
APPROVED

DIRECTOR/SECRETARY  
DATE 12/1/99

INDICATED UNDERGROUND UTILITIES ARE BASED ON AVAILABLE DATA. THE LOCATIONS ARE APPROXIMATE AND ALL UTILITIES MAY NOT BE SHOWN. PRIOR TO CONSTRUCTION, CONTRACTOR SHALL CALL 1-800-922-4455 AND HAVE ALL UTILITIES MARKED.

THIS DRAWING HAS BEEN PREPARED BASED, IN PART, ON INFORMATION PROVIDED BY OTHERS RELATING TO THE LOCATION OF UNDERGROUND SERVICES. WE CANNOT VERIFY THE ACCURACY OF THIS INFORMATION AND SHALL NOT BE HELD RESPONSIBLE FOR ANY ERRORS OR OMISSIONS, WHICH MAY BE INCORPORATED HEREIN AS A RESULT.

The portion of Kensington/Hampton streets shown on this map are obtained from public files of the City of Hartford.

O. Blint  
Survey Supervisor

I HEREBY DECLARE THAT THIS MAP IS SUBSTANTIALLY CORRECT. THIS MAP AND SURVEY WERE PREPARED IN ACCORDANCE WITH THE STANDARDS OF A CLASS A-B SURVEY AS DEFINED IN THE "RECOMMENDED STANDARDS FOR SURVEYS AND MAPS IN THE STATE OF CONNECTICUT" AS PREPARED AND ADOPTED BY THE CONNECTICUT ASSOCIATION OF LAND SURVEYORS, INC. ON SEPTEMBER 24, 1992.

PETER D. FLYNN  
CT.L.L.S. #8798  
DATE

FLYNN LAND SURVEYING ASSOCIATES  
376 WILBUR CROSS HIGHWAY 888-7888  
BERLIN, CONNECTICUT 06037

REVISIONS	
NO.	DATE
1	08/4/99
2	09/23/99
MILTON LEWIS HOWARD ASSOCIATES, INC. ARCHITECTS ONE REGENCY DRIVE, BLOOMFIELD, CT 06002 (860) 243-0094 FAX (860) 243-0570	
SUBDIVISION PLAN	
REDEVELOPMENT OF HARRIET BEECHER STOWE VILLAGE FOR THE HOUSING AUTHORITY OF THE CITY OF HARTFORD, CONNECTICUT CM DEVELOPMENT TEAM, LLC 44 NEW BRITAIN AVENUE PLAINVILLE, CT 06062	
TE TORRES ENGINEERING, INC. 137 SEYMOUR AVENUE WEST HARTFORD, CT 06119 (203) 232-9833 FAX 232-9838	
SCALE	1" = 40'
DATE	7-9-99
CHECKED BY	OT
FILE NO.	98020
DRAWING NO.	C-5