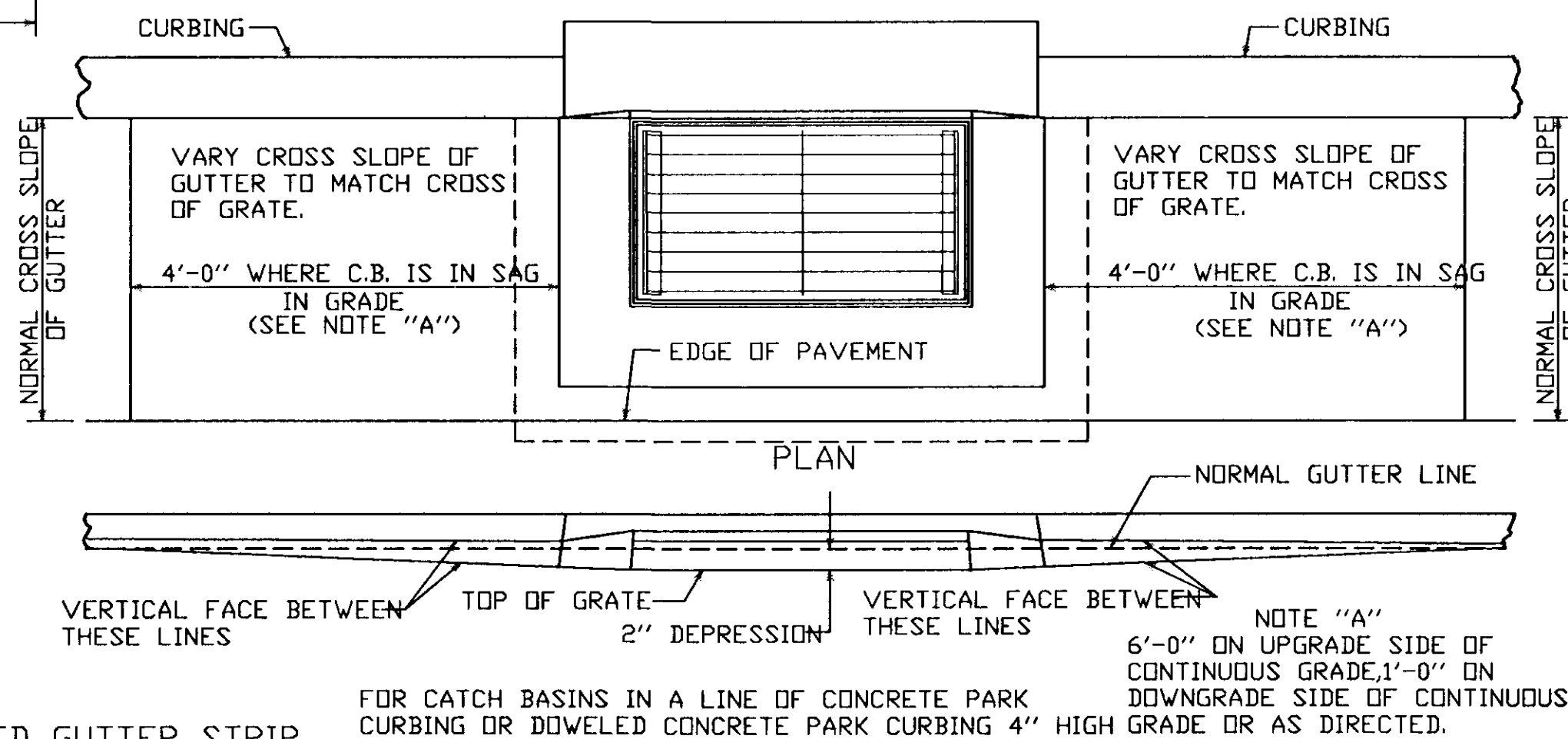
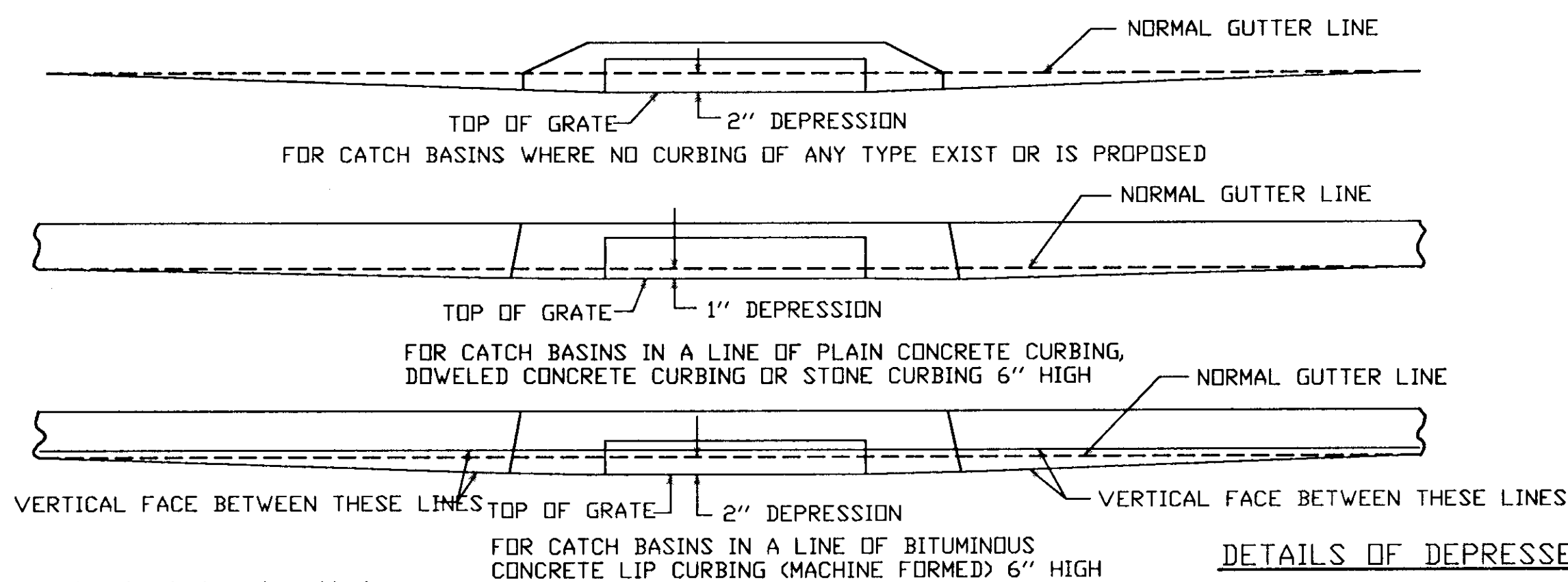
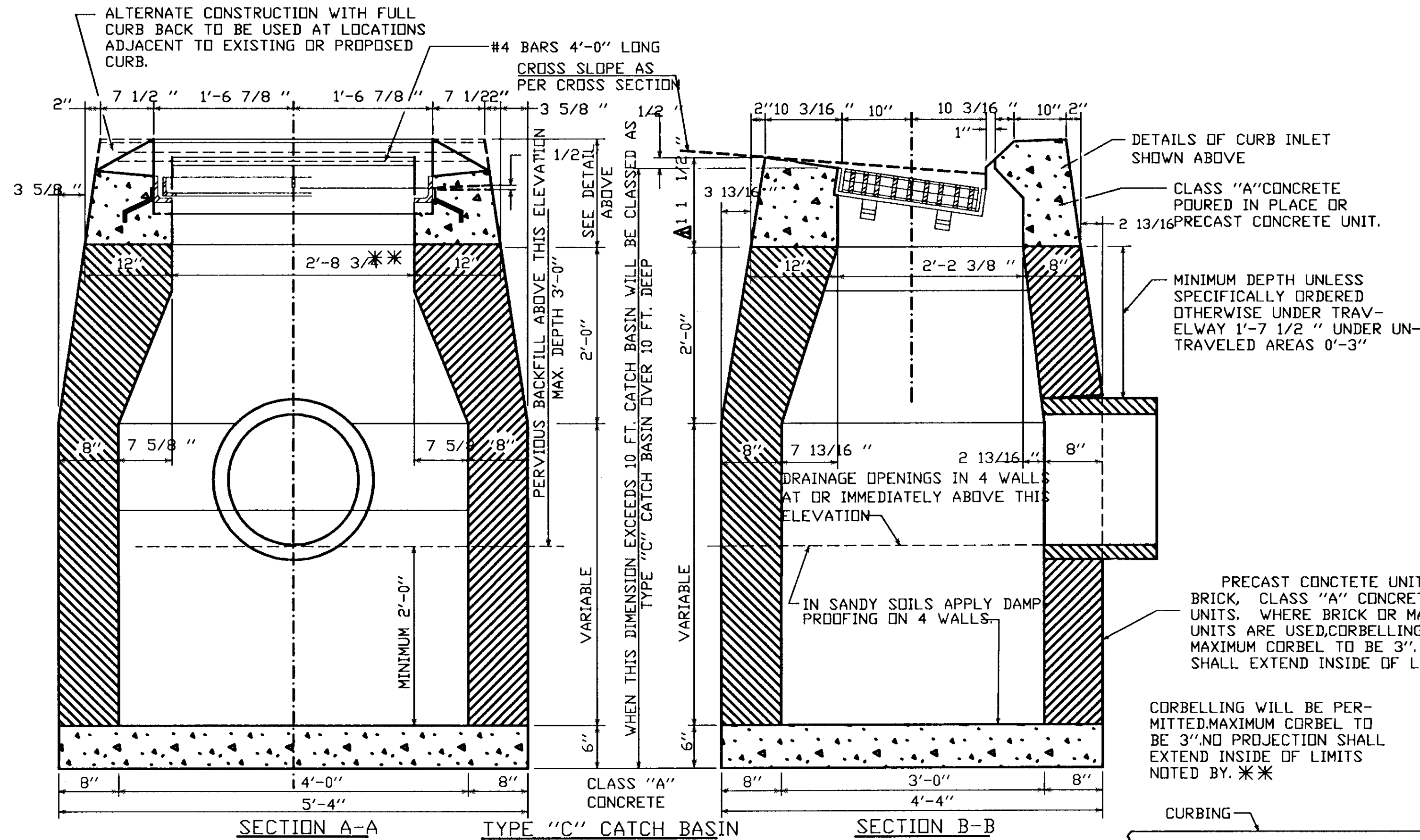
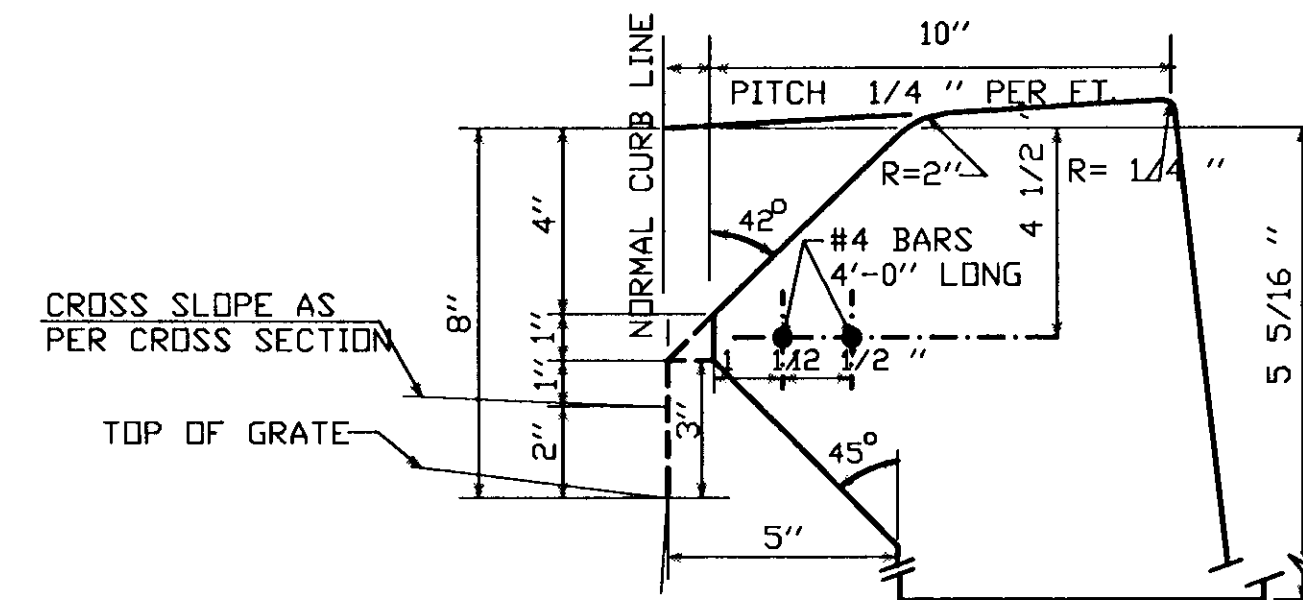
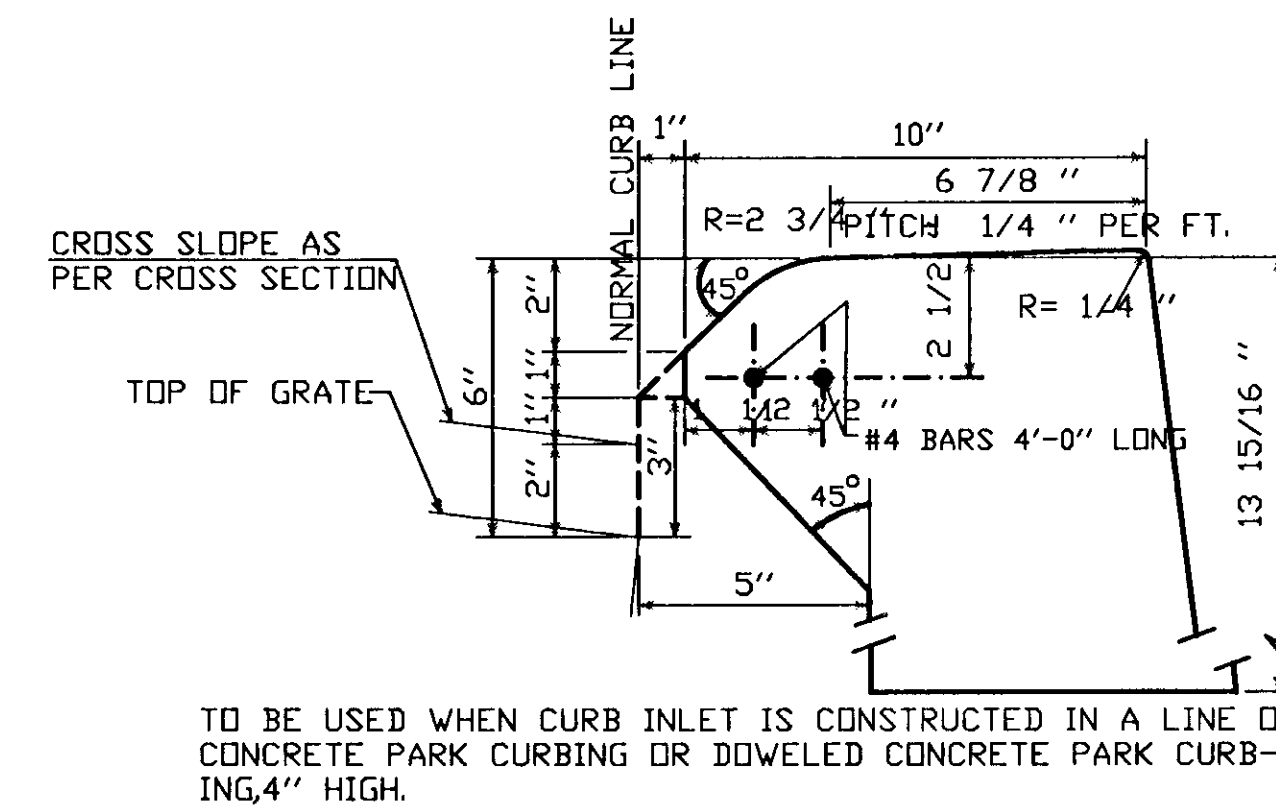
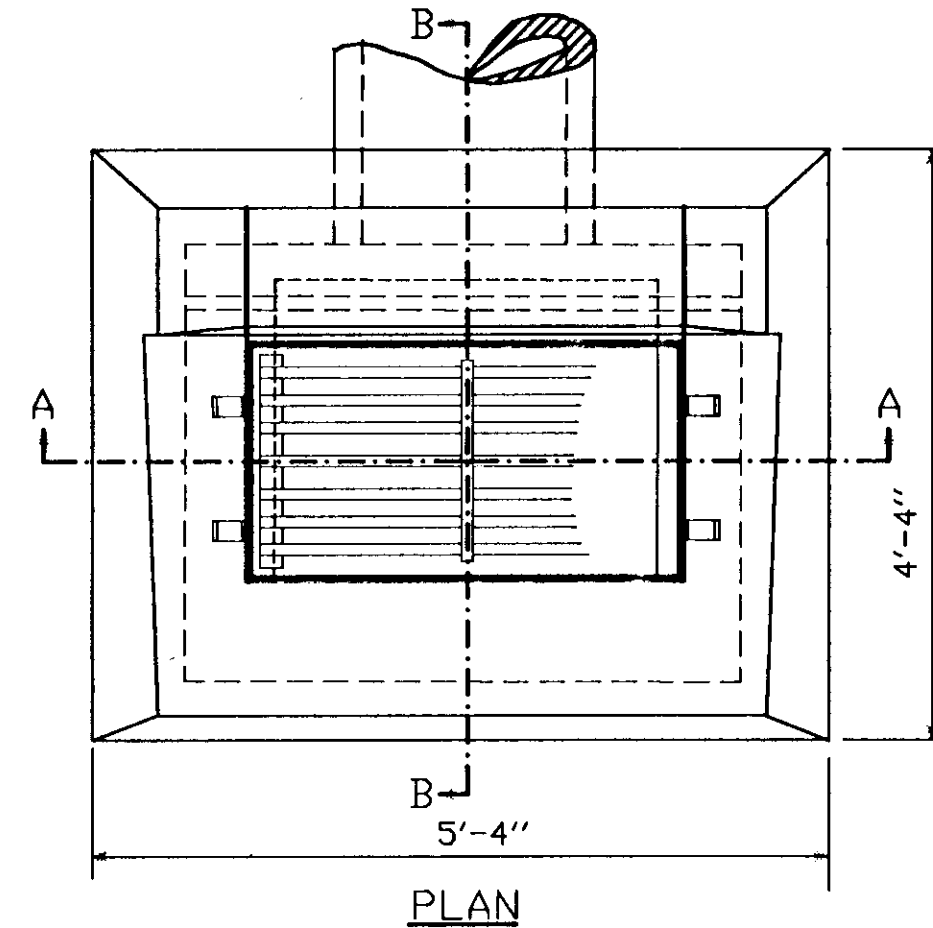
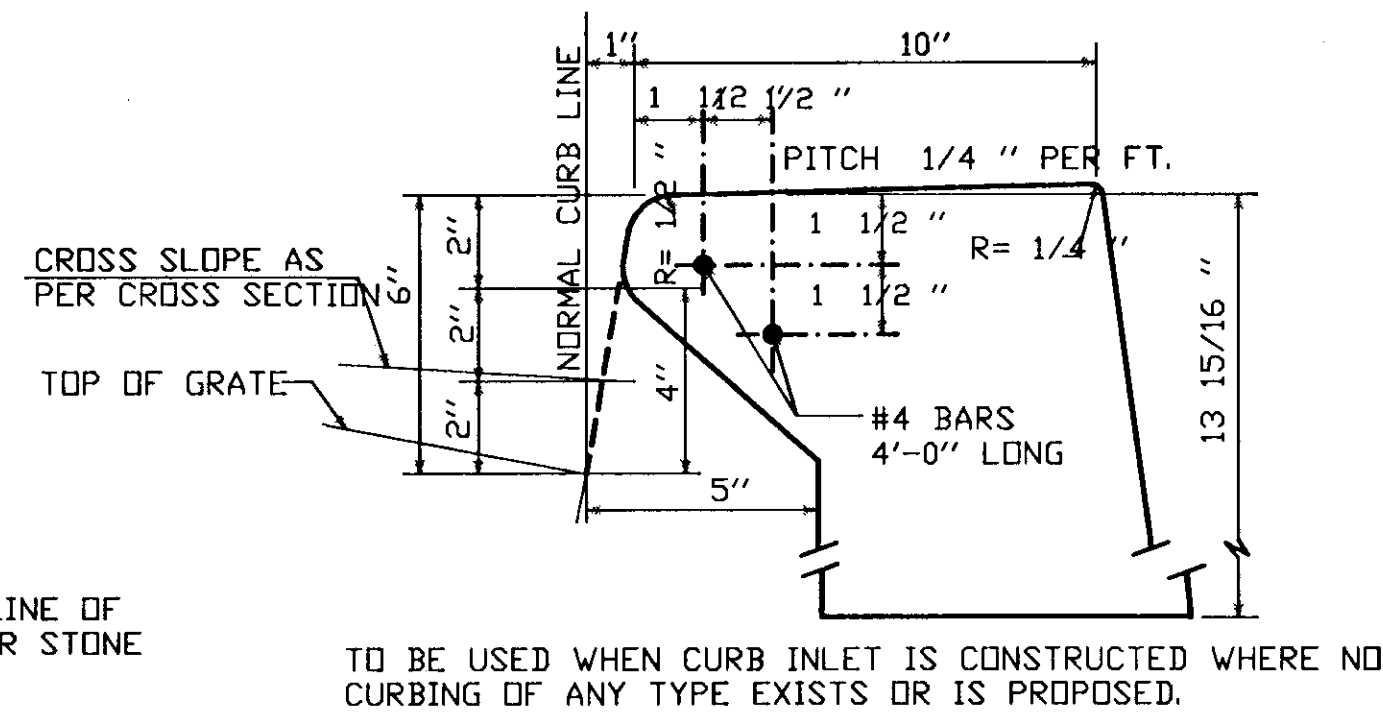
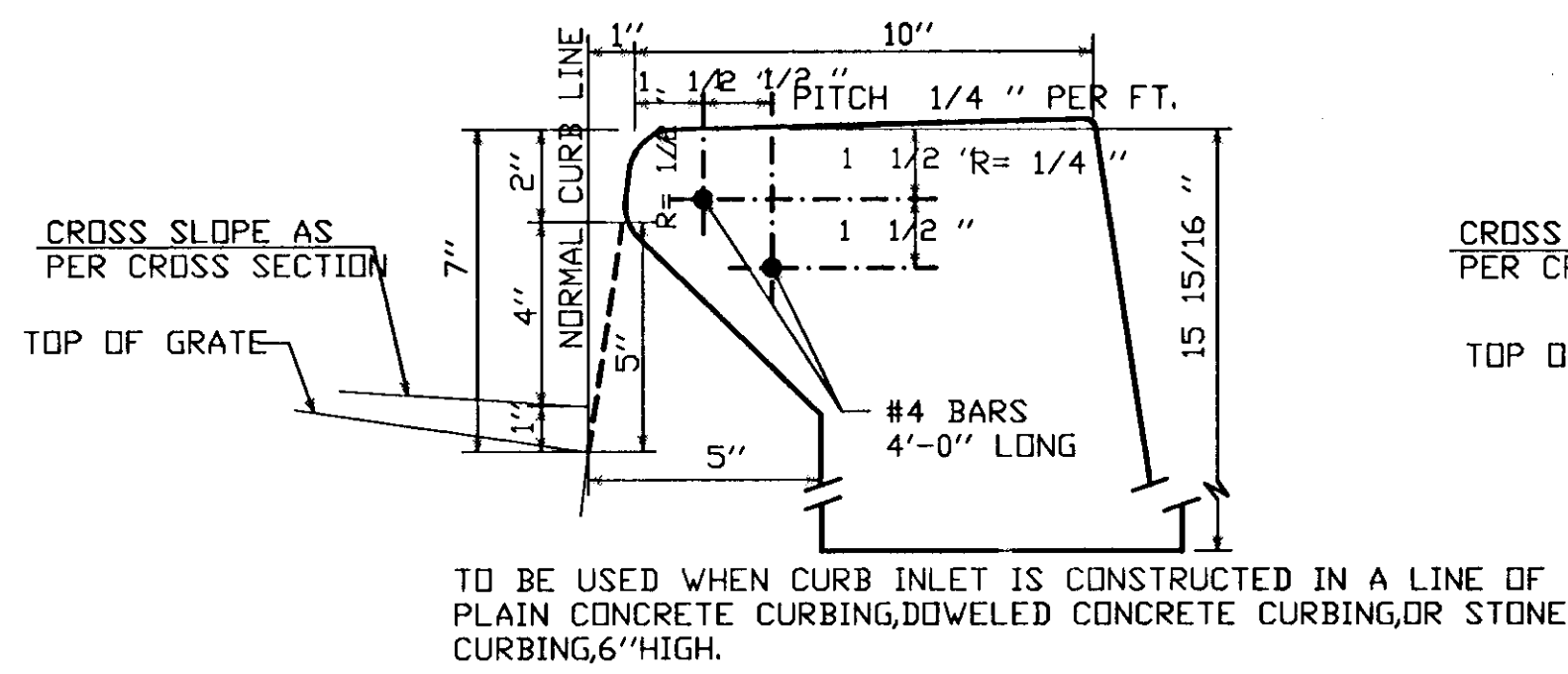


NOTE: WHEN CATCH BASIN IS SET IN CONCRETE PAVEMENT THE 1/2" SLOPE ON THE TOP SURFACE SHALL BE CHANGED TO MATCH ADJOINING PAVEMENT.



NOTES

FOR DETAILS OF FRAME AND GRATE SEE STD. SHEET 507-K.

CONCRETE TOP WITH CURB INLET OF PARK CURB TYPE OR PLAIN TYPE MAY BE USED ON TYPE "C" CATCH BASIN. IF NOT SPECIFIED ON THE PLANS TO BE CONSTRUCTED AS DIRECTED BY THE ENGINEER.

WHERE TYPE "C" CATCH BASIN IS CONSTRUCTED IN PAVEMENT AREA, THE NORMAL CROSS SLOPE OF THE GUTTER SHALL BE VARIED TO MATCH CROSS SLOPE OF GRATE. DETAILS ARE SHOWN ON THIS SHEET.

ALL FACES OF STRUCTURES IN CONTACT WITH CONCRETE PAVEMENT TO BE COVERED WITH A LAYER OF TAR PAPER. COST TO BE INCLUDED IN PRICE BID FOR TYPE "C" CATCH BASIN. THE COST OF ALL REINFORCING STEEL SHALL ALSO BE INCLUDED IN SAID BID PRICE.

WALLS OF ALL CATCH BASINS OVER 10 FT. DEEP TO BE INCREASED TO 12" THICKNESS. INSIDE DIMENSIONS TO REMAIN THE SAME.

TYPE "C" CATCH BASIN

/usr/artz/standard.bdr

CITY OF HARTFORD, CONNECTICUT DEPARTMENT OF PUBLIC WORKS TRANSPORTATION SERVICES BUREAU			
TYPE "C" CATCH BASIN STANDARD DETAIL HARTFORD, CONNECTICUT			
SUBMITTED	RECOMMENDED	APPROVED	
PROJECT ENGINEER	MANAGER	CITY ENGINEER	
DRAWN	SCALE	DAYBOOK NO. 011397	SHEET
CHECKED	NOT TO SCALE	DATE MAY 22, 1995	OF
		FILE NAME ALBANY-BB.DWG	