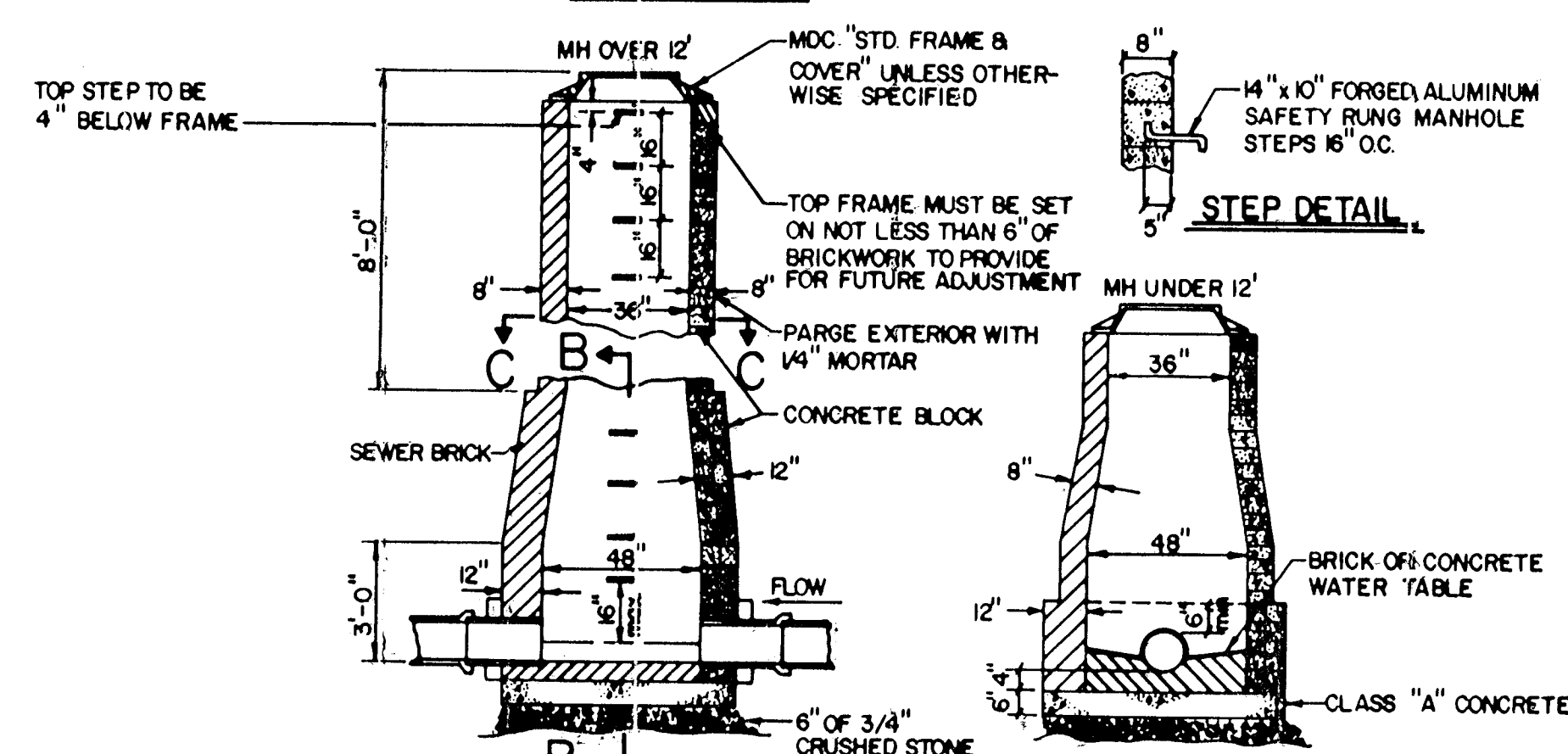
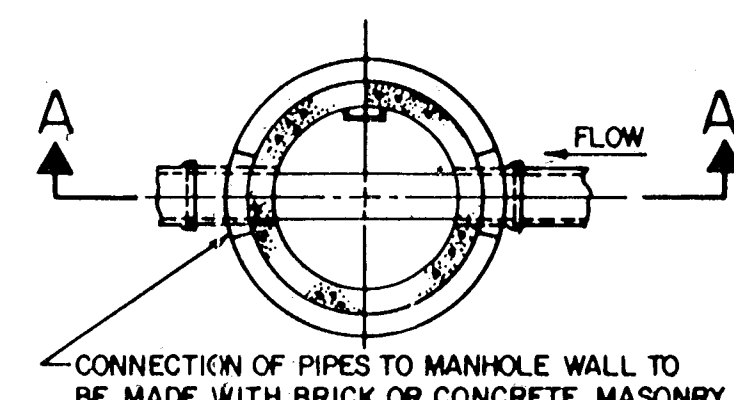


SECTION C-C

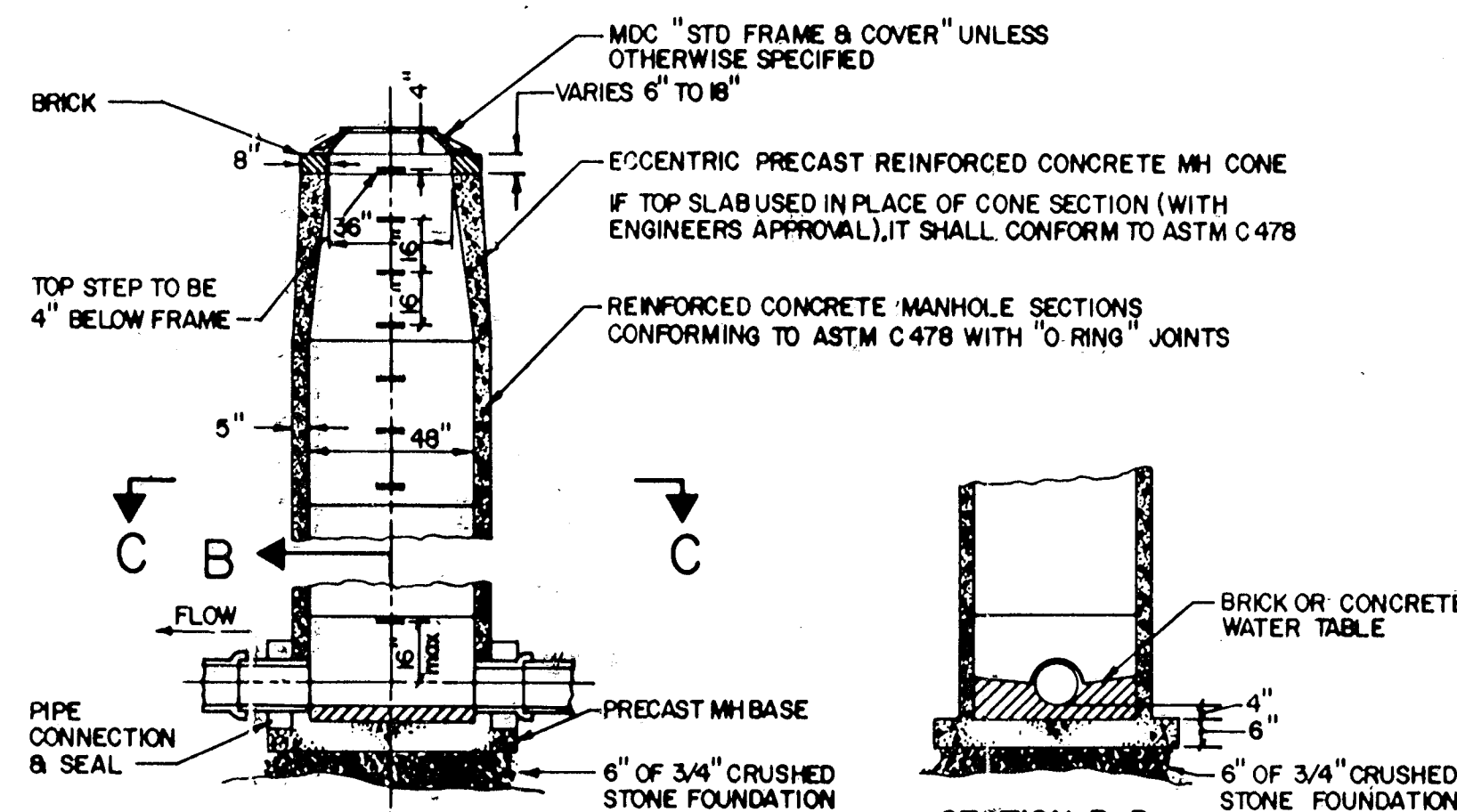


CONCRETE BLOCK DETAIL

TYPE 1 MANHOLE



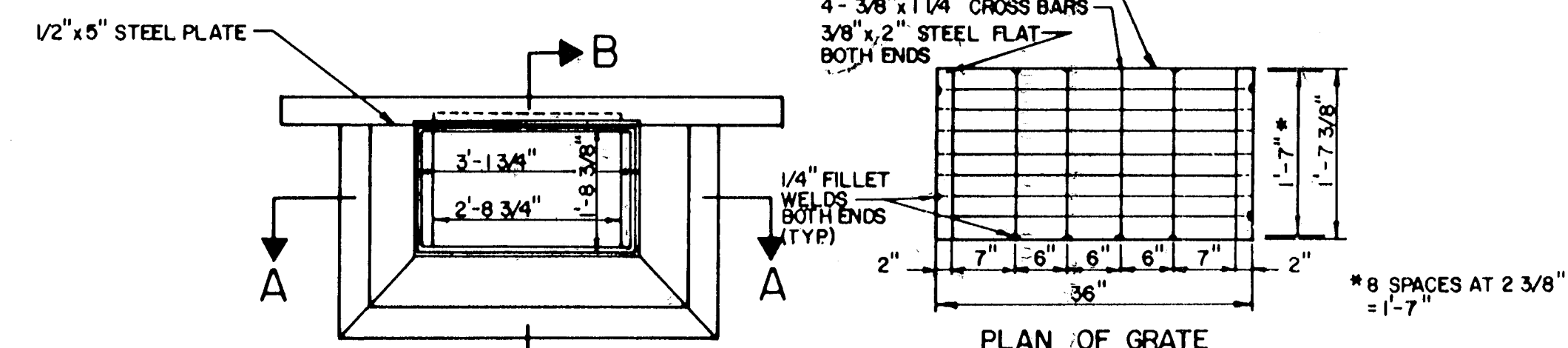
SECTION C-C



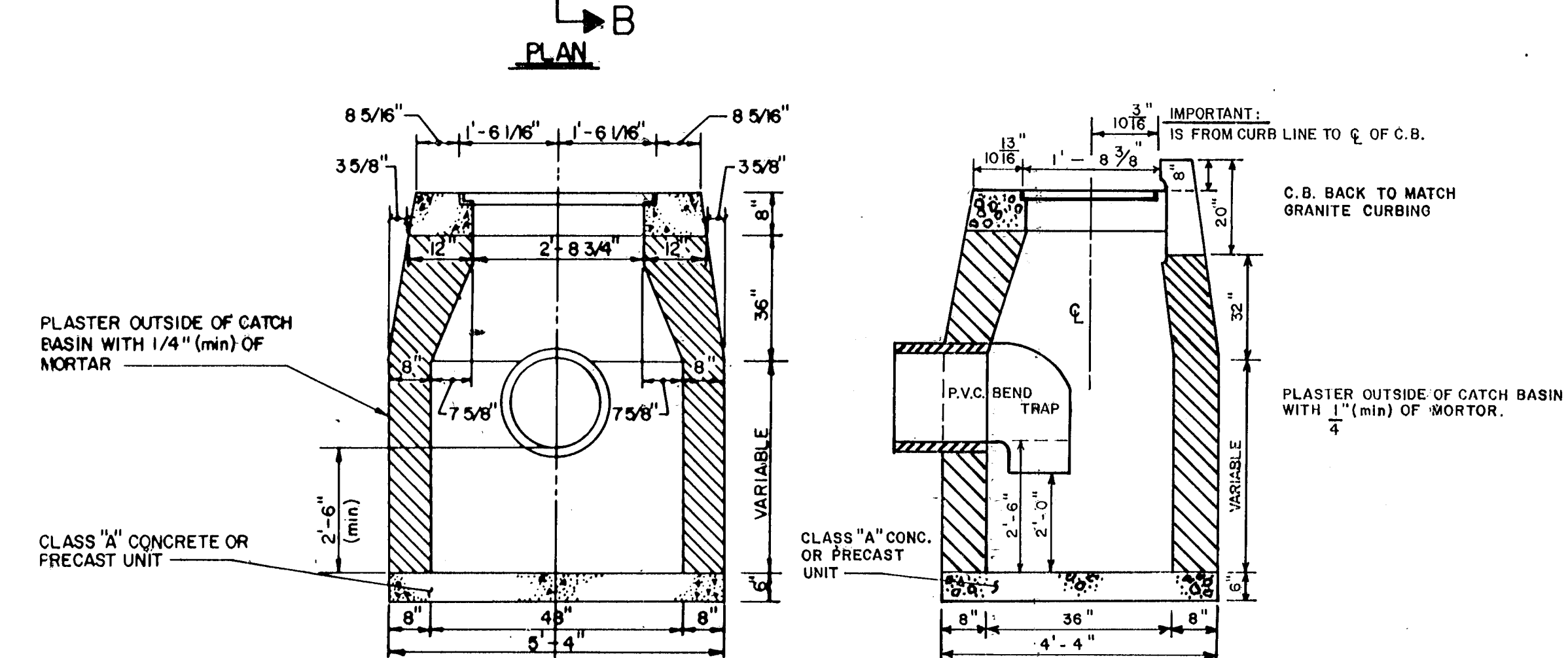
- MAXIMUM SIZE OF PIPE TO BE INSTALLED IN A TYPE 2 MANHOLE TO BE 18"
- MAXIMUM DEPTH OF RC PIPE MANHOLES WITH 5" THICK WALL IS 30 FT.
- RUBBER GASKETS USED FOR "O-RING" JOINTS SHALL CONFORM TO ASTM SPEC C443
- ALL PRECAST MANHOLE BASES SHALL COMPLY WITH THE MINIMUM REQUIREMENTS FOR 48" DIAMETER PRECAST MANHOLE BASE

TYPE 2 MANHOLE

TYPICAL PRECAST MANHOLE



PLAN OF GRATE

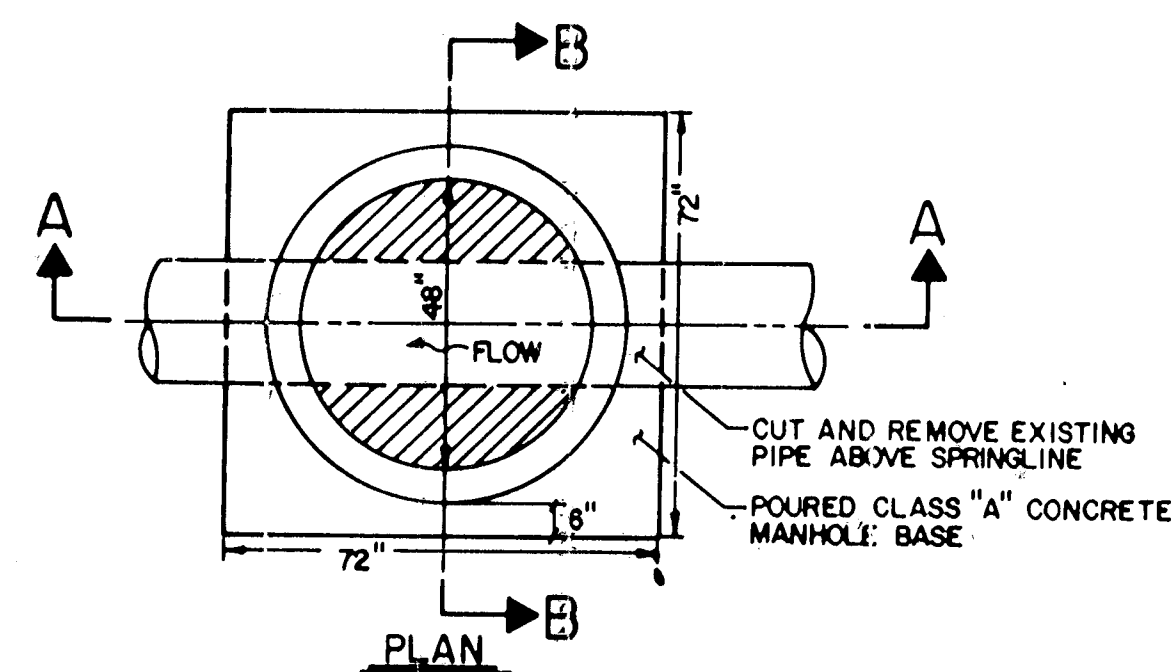


SECTION A-A

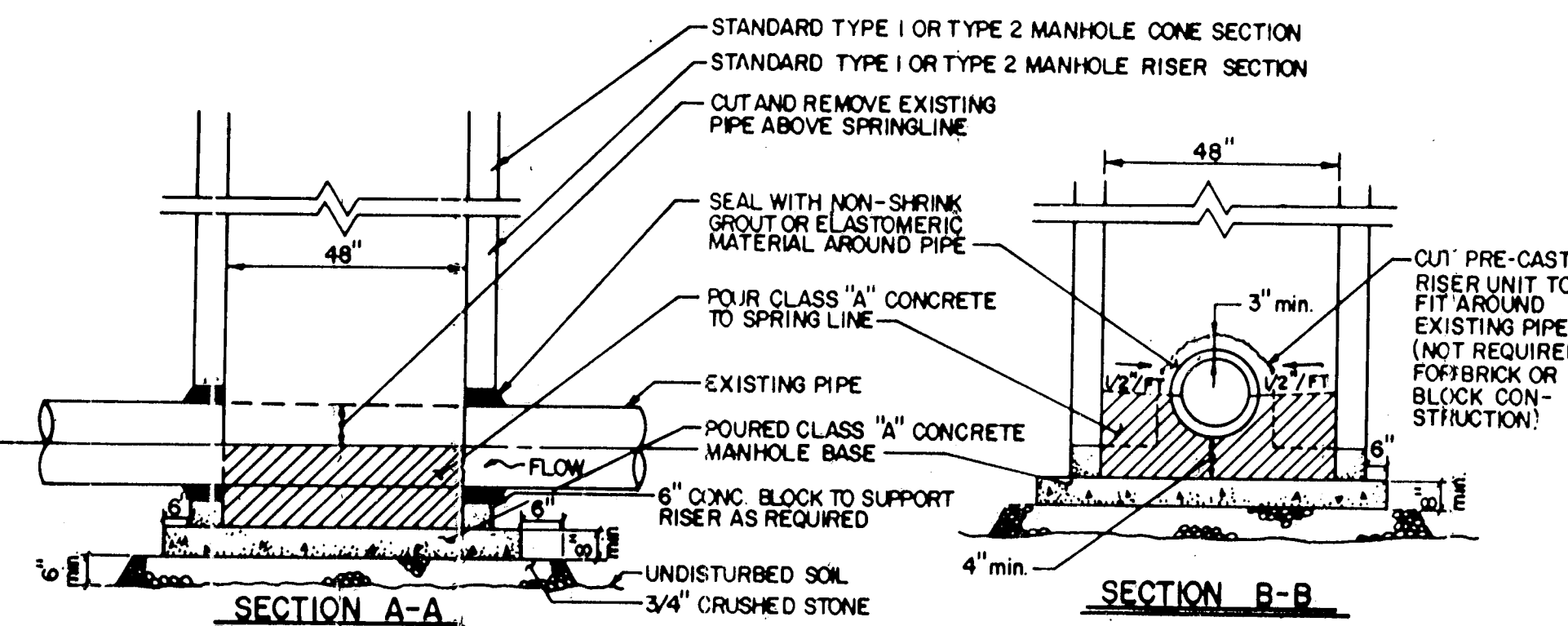
SECTION B-B

NOTE: SEE SEPARATE DETAIL FOR GRANITE CURB AND TYPE "C" CATCH BASIN INLETS

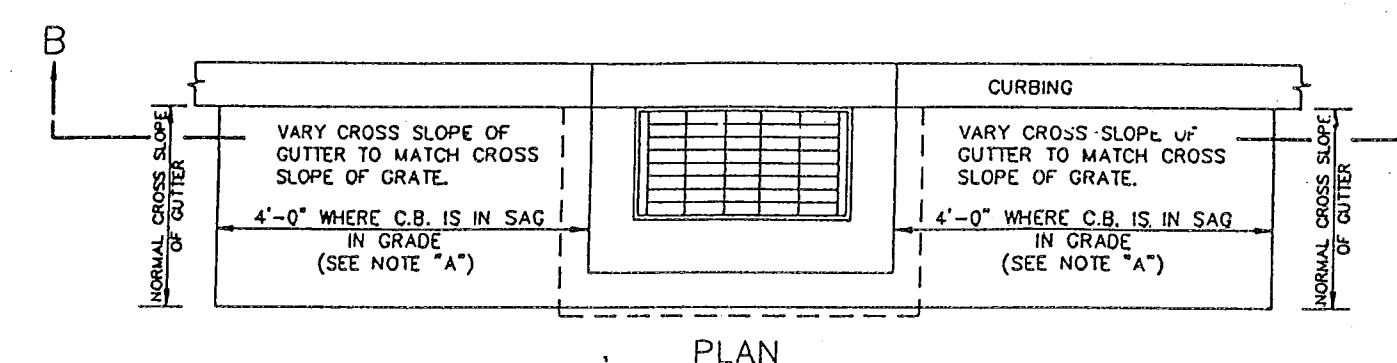
HARTFORD TYPE "C" CATCH BASIN INLETS



PLAN

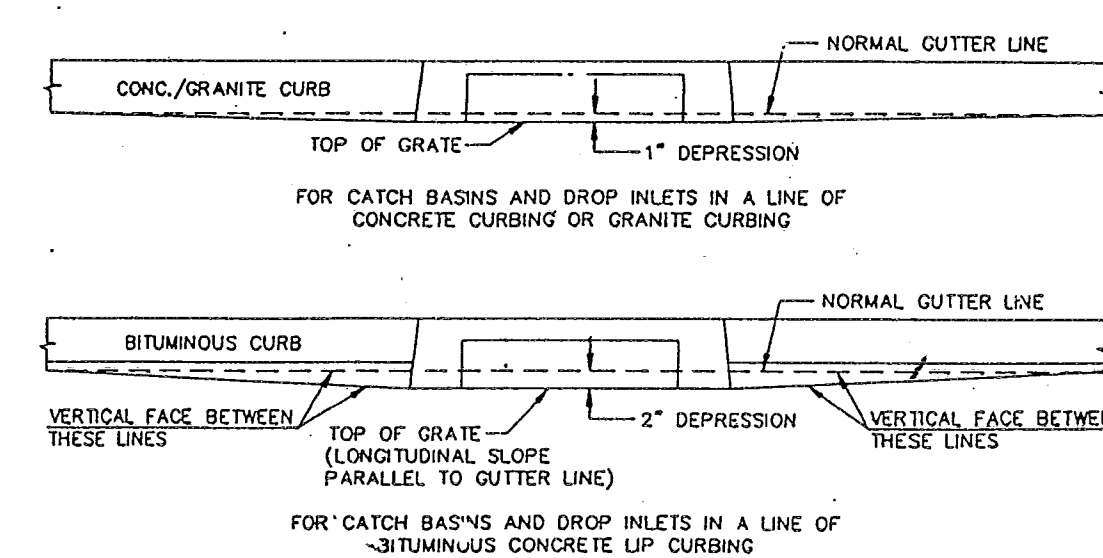


SPECIAL MANHOLE DETAIL



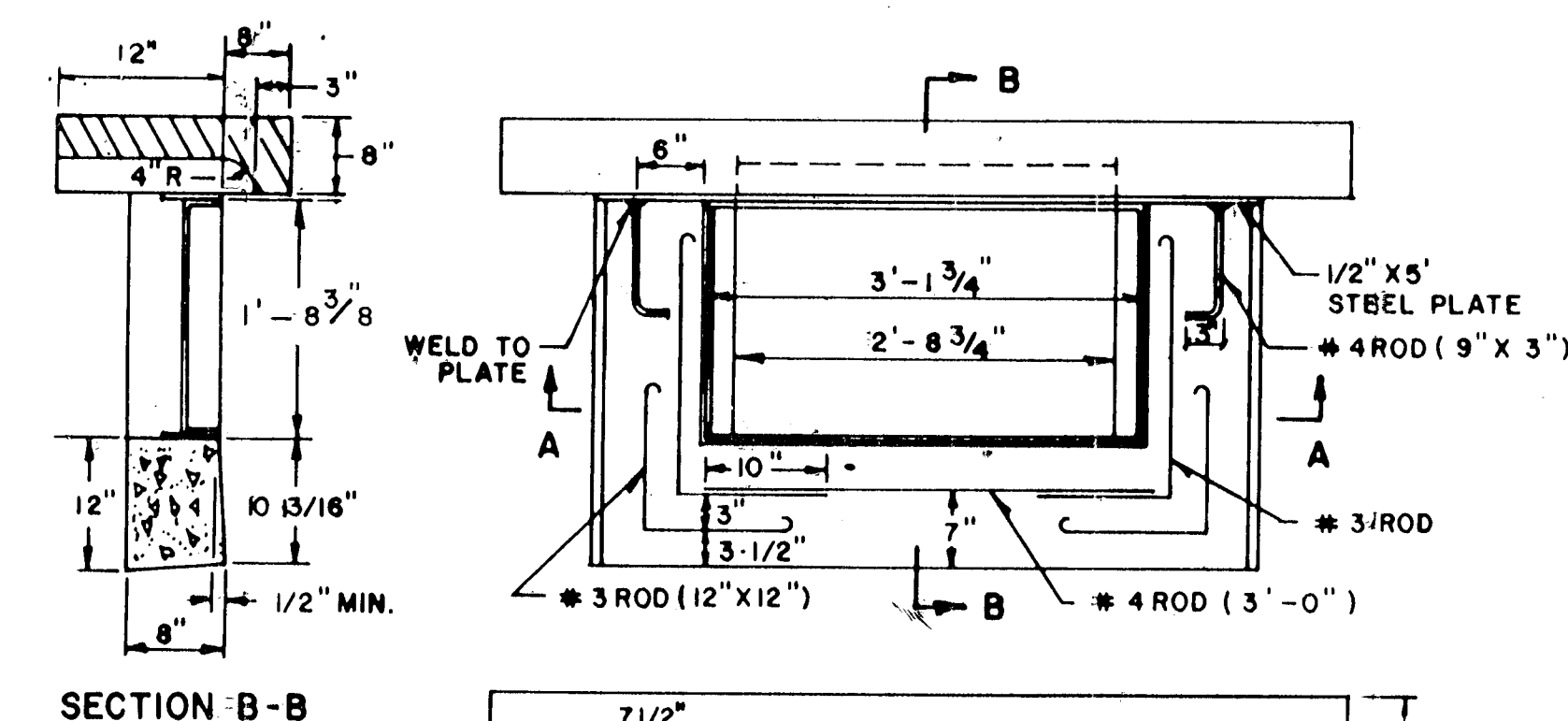
PLAN

NOTE "A" 6'-0" ON UPGRADE SIDE OF CONTINUOUS GRADE, 1'-0" ON DOWNGRADE SIDE OF CONTINUOUS GRADE OR AS DIRECTED.

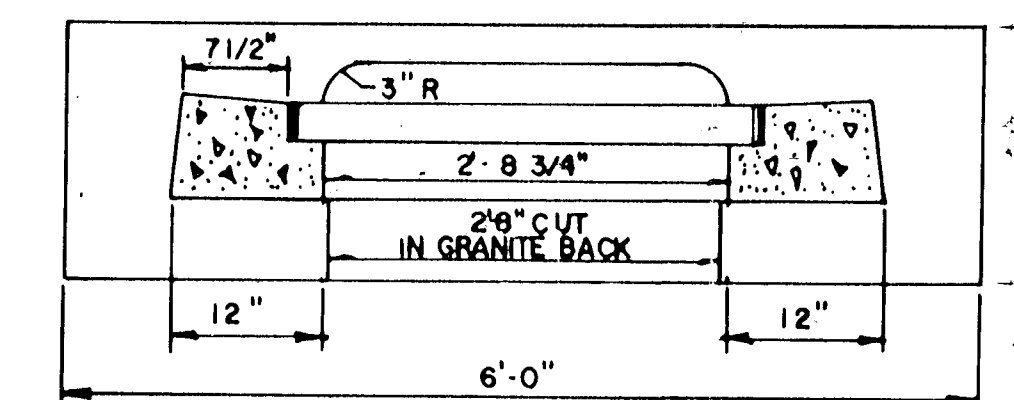


SECTION B-B

DEPRESSED GUTTER AT CATCH BASIN DETAIL
NOT TO SCALE



SECTION B-B



SECTION A-A

GRANITE CURB CATCH BASIN INLET

CITY OF HARTFORD, CONNECTICUT DEPARTMENT OF PUBLIC WORKS BUREAU OF ENGINEERING SERVICES			
STANDARD DETAILS SHEET III			
SUBMITTED PROJECT ENGINEER M. J. J. J.	RECOMMENDED DIVISION MANAGER J. J. J. J.	APPROVED CITY ENGINEER J. J. J. J.	DAYBOOK NO. 01392
DRAWN CHECKED JFS	SCALE NOT TO SCALE	DATE NOVEMBER 1999	

REVISED
SEPT. 15, 1994
MAY 1995