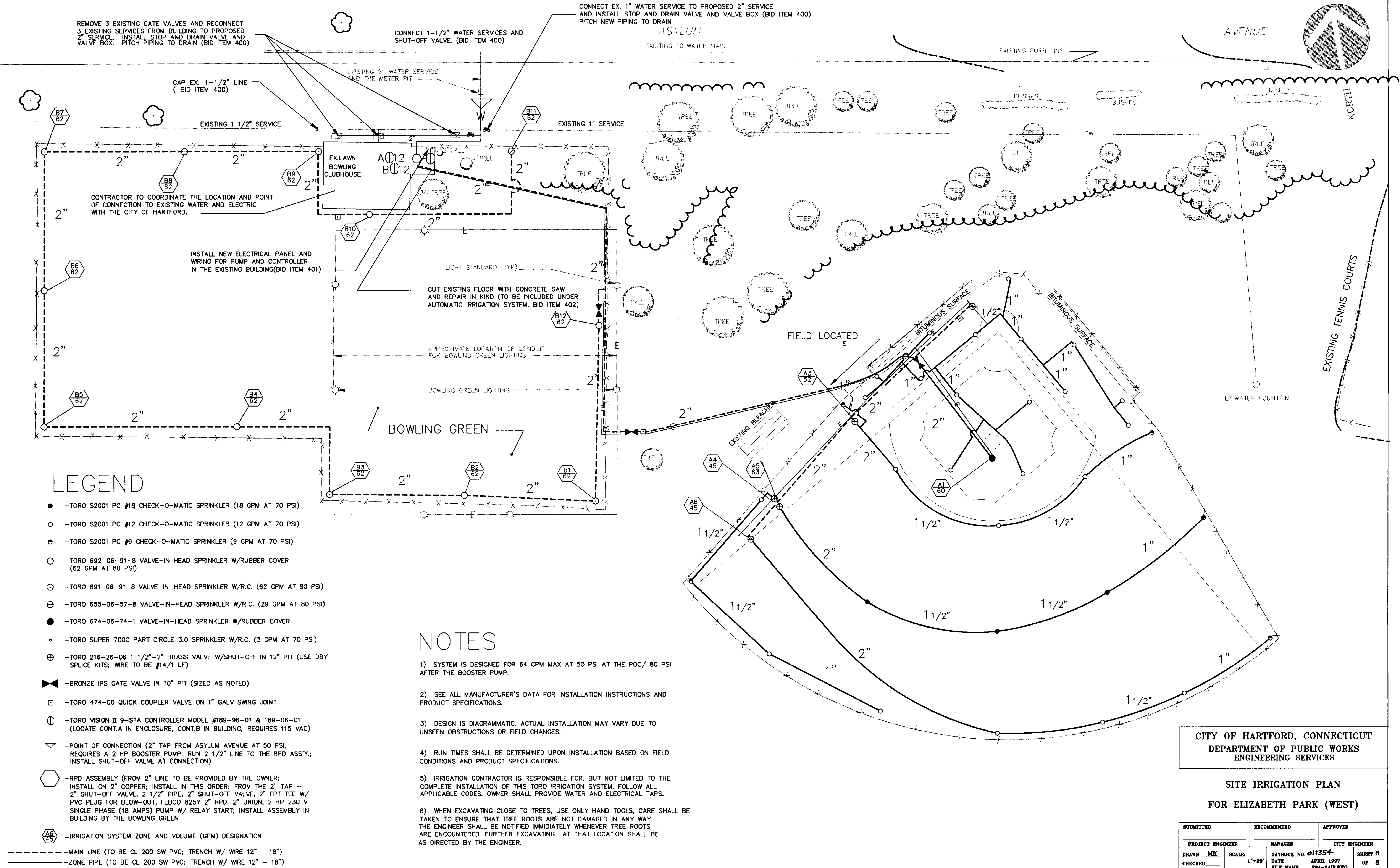


THIS IS A CONCEPT PLAN ONLY. PROSPECTIVE CONTRACTOR ARE ENCOURAGE TO SUBMIT ALTERNATIVE SHOP DRAWINGS OF AN EQUAL OR BETTER IRRIGATION SYSTEM FOR REVIEW.



LEGEND

- -TORO S2001 PC #18 CHECK-O-MATIC SPRINKLER (18 GPM AT 70 PSI)
- -TORO S2001 PC #12 CHECK-O-MATIC SPRINKLER (12 GPM AT 70 PSI)
- -TORO S2001 PC #9 CHECK-O-MATIC SPRINKLER (9 GPM AT 70 PSI)
- -TORO 692-06-91-8 VALVE-IN HEAD SPRINKLER W/RUBBER COVER (62 GPM AT 80 PSI)
- -TORO 691-06-91-8 VALVE-IN-HEAD SPRINKLER W/R.C. (62 GPM AT 80 PSI)
- -TORO 655-06-57-8 VALVE-IN-HEAD SPRINKLER W/R.C. (29 GPM AT 80 PSI)
- -TORO 674-06-74-1 VALVE-IN-HEAD SPRINKLER W/RUBBER COVER
- -TORO SUPER 700C PART CIRCLE 3.0 SPRINKLER W/R.C. (3 GPM AT 70 PSI)
- ⊕ -TORO 216-26-06 1 1/2"-2" BRASS VALVE W/SHUT-OFF IN 12" PIT (USE DBY SPLICE KITS; WIRE TO BE #14/1 UF)
- ⊕ -BRONZE IPS GATE VALVE IN 10" PIT (SIZED AS NOTED)
- -TORO 474-00 QUICK COUPLER VALVE ON 1" GALV SWNG JOINT
- Ⓢ -TORO VISION II 9-STA CONTROLLER MODEL #189-96-01 & 189-06-01 (LOCATE CONT.A IN ENCLOSURE, CONT.B IN BUILDING; REQUIRES 115 VAC)
- ▽ -POINT OF CONNECTION (2" TAP FROM ASYLUM AVENUE AT 50 PSI; REQUIRES A 2 HP BOOSTER PUMP; RUN 2 1/2" LINE TO THE RPD ASS'Y; INSTALL SHUT-OFF VALVE AT CONNECTION)
- ⬢ -RPD ASSEMBLY (FROM 2" LINE TO BE PROVIDED BY THE OWNER; INSTALL ON 2" COPPER; INSTALL IN THIS ORDER: FROM THE 2" TAP - 2" SHUT-OFF VALVE, 2 1/2" PIPE, 2" SHUT-OFF VALVE, 2" FPT TEE W/ PVC PLUG FOR BLOW-OUT, FEBCO 825Y 2" RPD, 2" UNION, 2 HP 230 V SINGLE PHASE (18 AMPS) PUMP W/ RELAY START; INSTALL ASSEMBLY IN BUILDING BY THE BOWLING GREEN
- ⬢ -IRRIGATION SYSTEM ZONE AND VOLUME (GPM) DESIGNATION
- MAIN LINE (TO BE CL 200 SW PVC; TRENCH W/ WIRE 12" - 18")
- ZONE PIPE (TO BE CL 200 SW PVC; TRENCH W/ WIRE 12" - 18")

NOTES

- 1) SYSTEM IS DESIGNED FOR 64 GPM MAX AT 50 PSI AT THE POC/ 80 PSI AFTER THE BOOSTER PUMP.
- 2) SEE ALL MANUFACTURER'S DATA FOR INSTALLATION INSTRUCTIONS AND PRODUCT SPECIFICATIONS.
- 3) DESIGN IS DIAGRAMMATIC. ACTUAL INSTALLATION MAY VARY DUE TO UNSEEN OBSTRUCTIONS OR FIELD CHANGES.
- 4) RUN TIMES SHALL BE DETERMINED UPON INSTALLATION BASED ON FIELD CONDITIONS AND PRODUCT SPECIFICATIONS.
- 5) IRRIGATION CONTRACTOR IS RESPONSIBLE FOR, BUT NOT LIMITED TO THE COMPLETE INSTALLATION OF THIS TORO IRRIGATION SYSTEM. FOLLOW ALL APPLICABLE CODES. OWNER SHALL PROVIDE WATER AND ELECTRICAL TAPS.
- 6) WHEN EXCAVATING CLOSE TO TREES, USE ONLY HAND TOOLS, CARE SHALL BE TAKEN TO ENSURE THAT TREE ROOTS ARE NOT DAMAGED IN ANY WAY. THE ENGINEER SHALL BE NOTIFIED IMMEDIATELY WHENEVER TREE ROOTS ARE ENCOUNTERED. FURTHER EXCAVATING AT THAT LOCATION SHALL BE AS DIRECTED BY THE ENGINEER.

CITY OF HARTFORD, CONNECTICUT
DEPARTMENT OF PUBLIC WORKS
ENGINEERING SERVICES

SITE IRRIGATION PLAN
FOR ELIZABETH PARK (WEST)

| | | |
|------------------|---------------|--------------------|
| SUBMITTED | RECOMMENDED | APPROVED |
| PROJECT ENGINEER | MANAGER | CITY ENGINEER |
| DRAWN MK | SCALE: 1"=20' | DAYBOOK NO. 011354 |
| CHECKED | FILE NAME | DATE APRIL 1997 |
| | | 104-241R.DWG |
| | | SHEET 8 OF 8 |