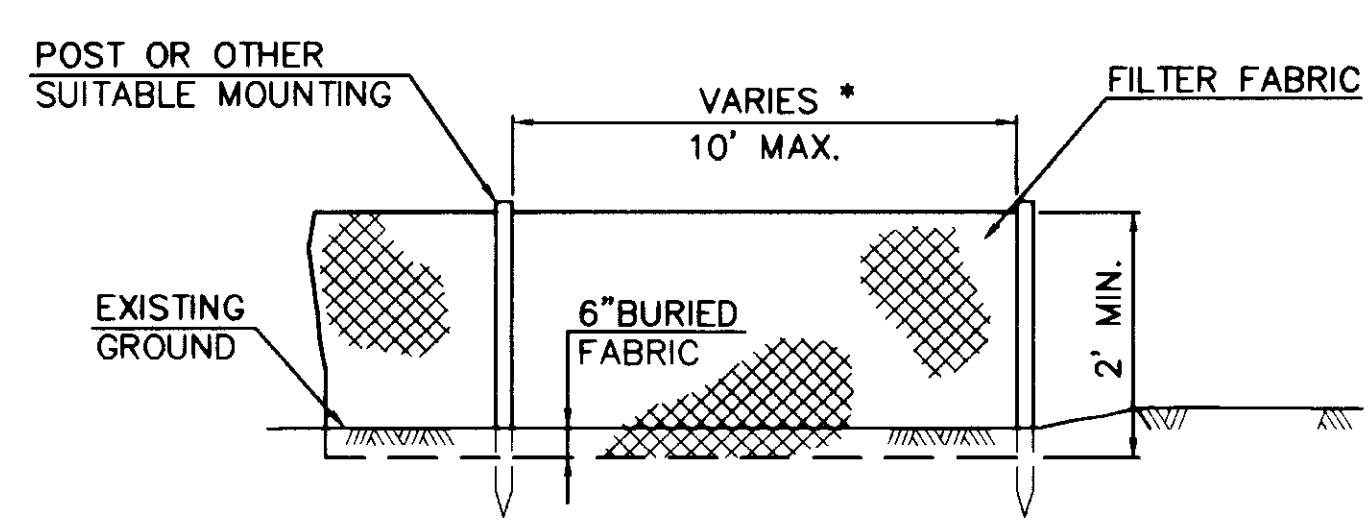
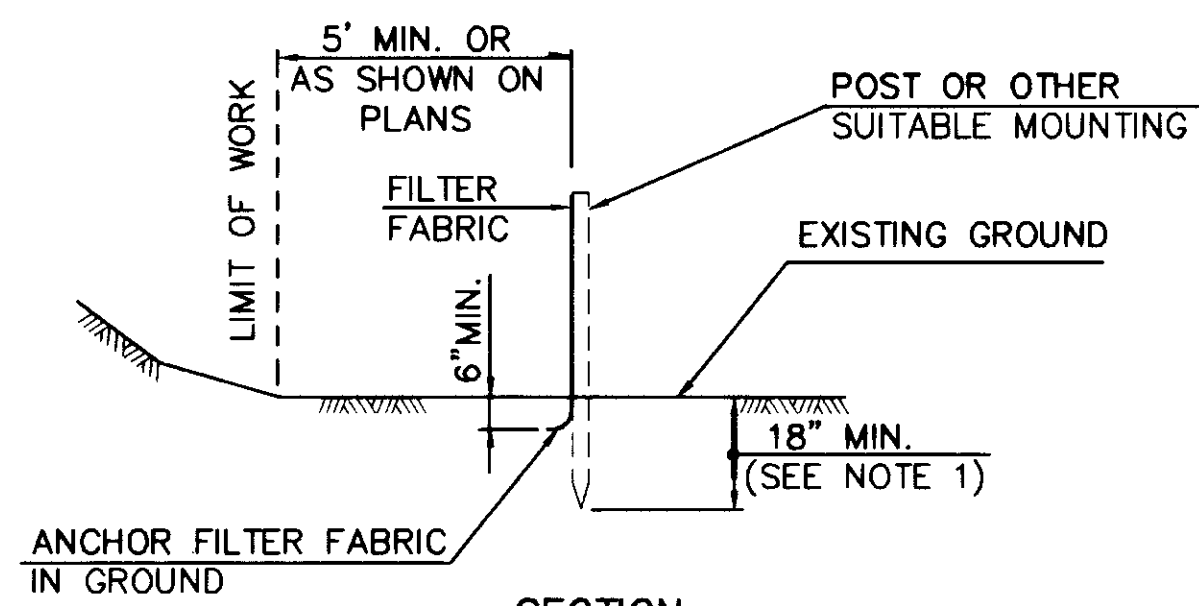


TENNIS COURTS AND FENCE LAYOUT
(TWO COURT COMPLEX)
NOT TO SCALE



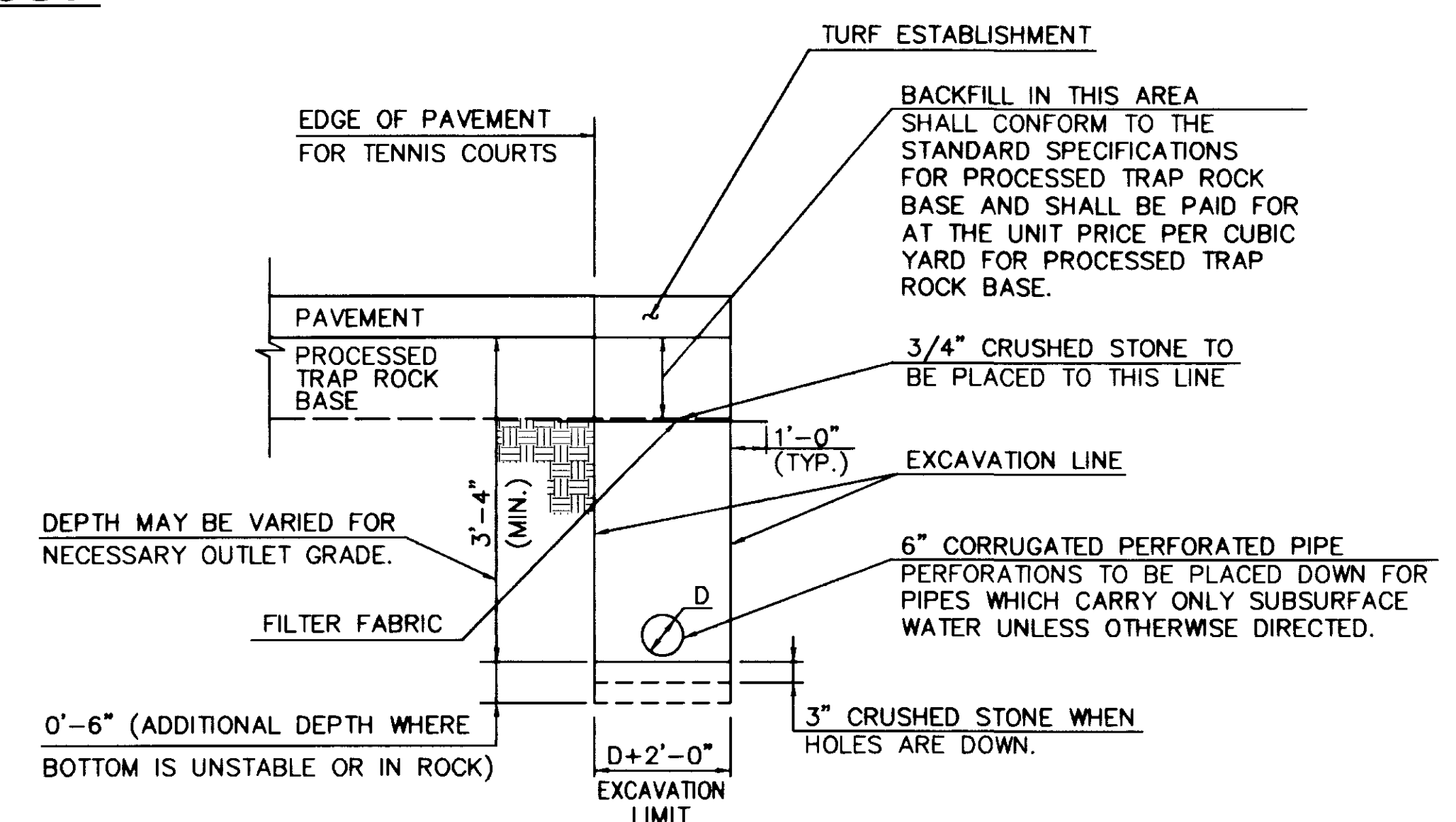
ELEVATION



SILT FENCE
NOT TO SCALE

NOTE: SAME TREATMENT APPLIES TO ALL FOUR CORNERS.

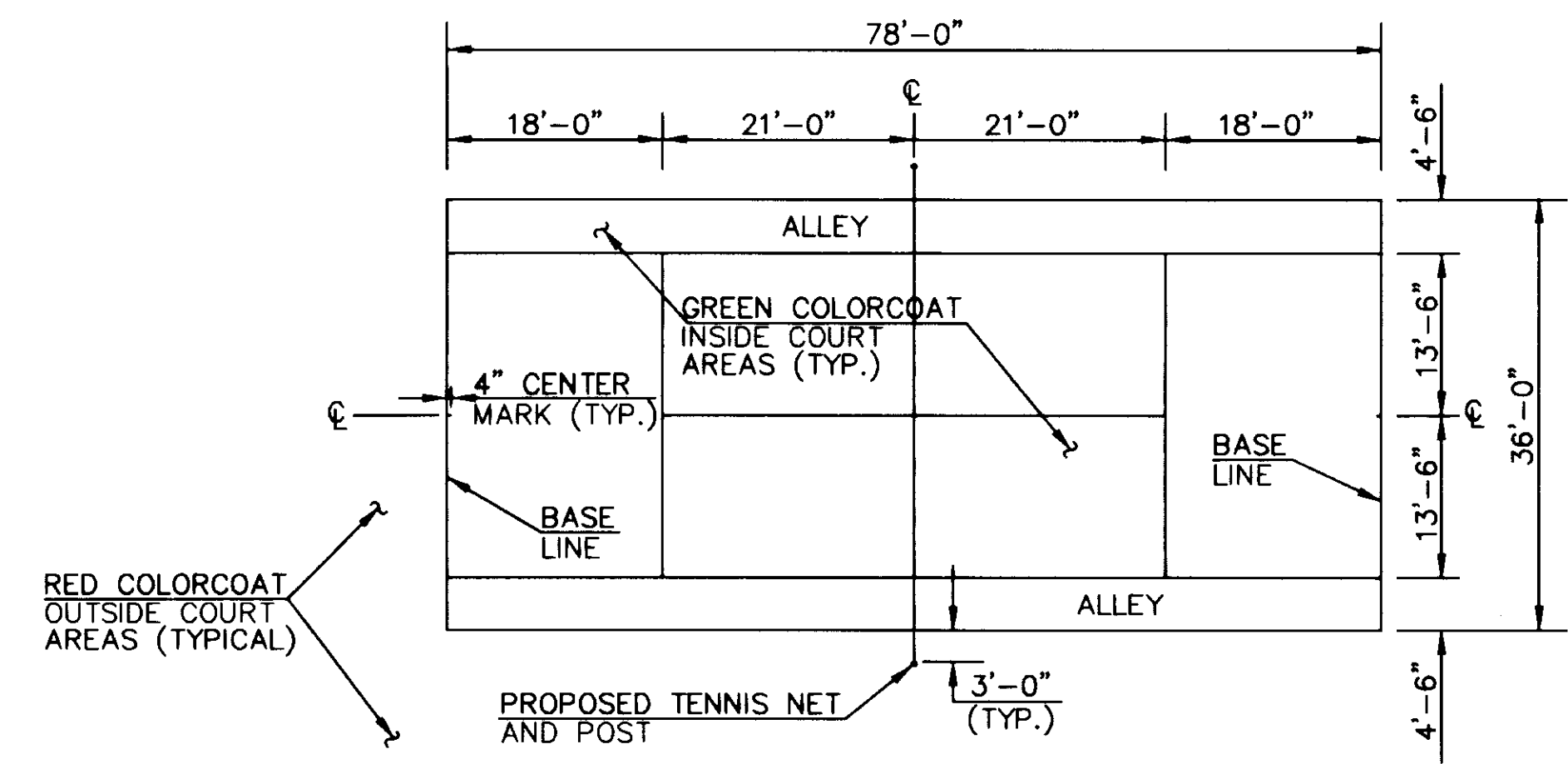
END 10 FEET HIGH FENCE



PLACEMENT OF UNDERDRAIN

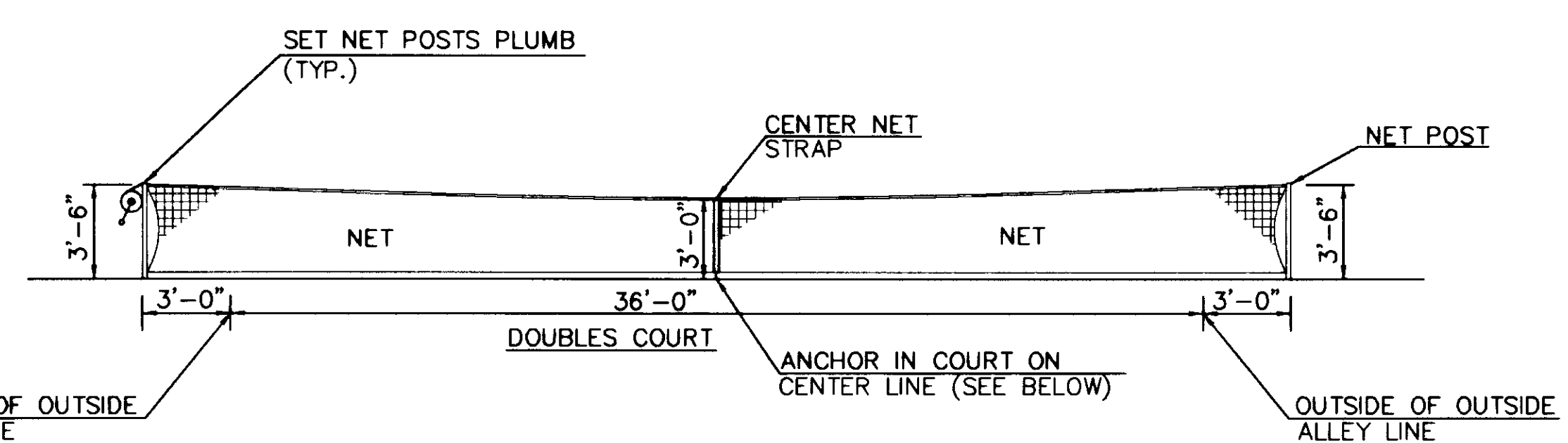
AT TWO COURT COMPLEX. (FOR PLACEMENT AT THE SIX COURT COMPLEX SEE NOTE ABOVE)
NOT TO SCALE

NOTE: EDGEDRAINS AT THE SIX COURT COMPLEX SHALL BE PLACED 10 FEET FROM THE EDGE OF PAVEMENT, SEE SHEET NO. 2.



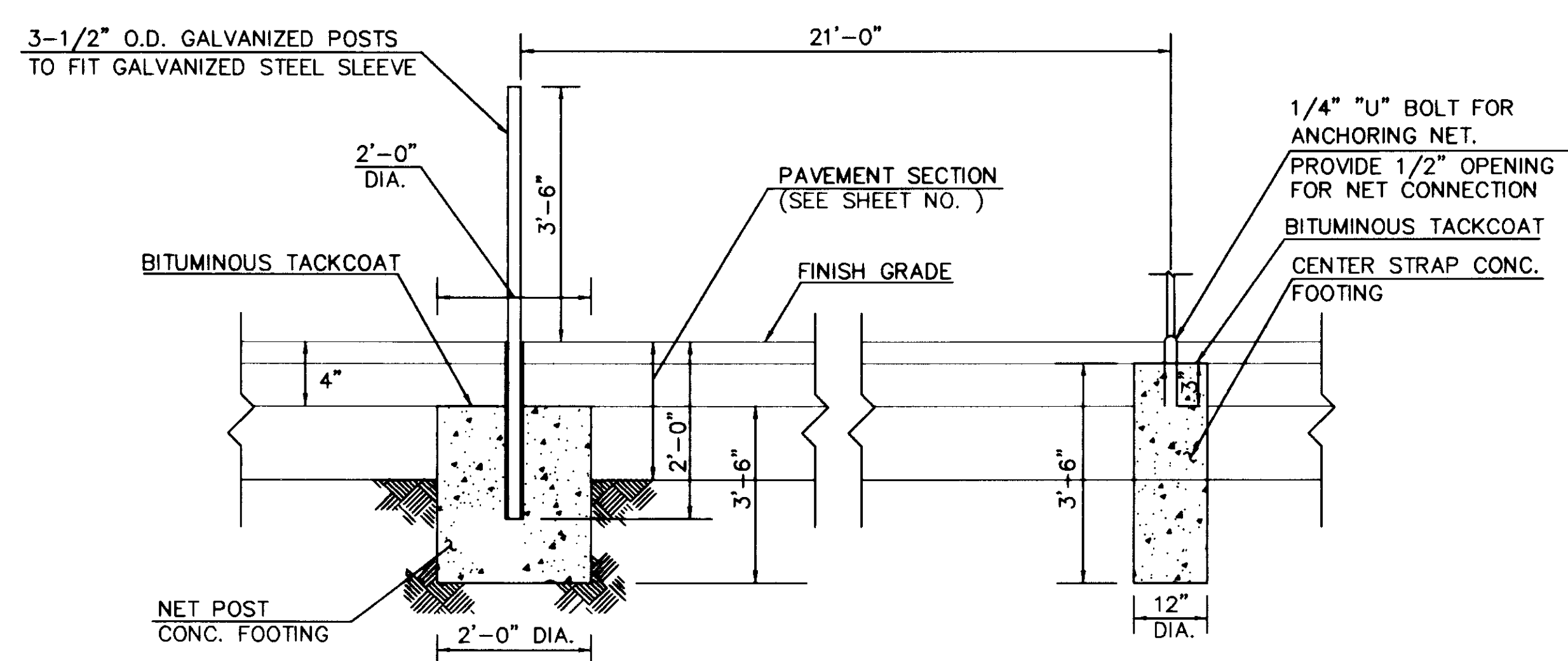
TENNIS COURTS PAINTED LINES LAYOUT

NOT TO SCALE



TENNIS COURTS NET, POST AND CENTER STRAP

NOT TO SCALE



NET POST AND CENTER STRAP FOUNDATION

NOT TO SCALE

NOTES:

- 1.) ALL PAINTED LINES ARE TO BE WHITE IN COLOR AND 2" WIDE, EXCEPT BASE LINES 4" WIDE.
- 2.) ALL DIMENSIONS TO OUTSIDE OF LINES EXCEPT CENTER LINE.
- 3.) COLORCOAT - A TEXTURE COLOR COURSE, AND A SURFACE COLOR COURSE AS SPECIFIED IN THE PROJECT MANUAL.
- 4.) COLORCOAT TO EXTEND TO THE EDGE OF PAVED AREAS IN ALL DIRECTIONS.
- 5.) INSTALL SILT FENCE AROUND ENTIRE TENNIS COMPLEX PRIOR TO ANY EXCAVATION.

DAYBOOK NO. 011354D

CITY OF HARTFORD, CONNECTICUT
DEPARTMENT OF PUBLIC WORKS
TRANSPORTATION SERVICES BUREAU

TWO COURT COMPLEX - LAYOUT PLAN AND MISCELLANEOUS DETAILS

IMPROVEMENTS OF
TENNIS COURTS AND IRRIGATION
AT ELIZABETH PARK

NO.	DATE	REVISION
DESIGNED:	AM	
DRAWN:	AM	
CHECKED:	WDS	
APPROVED:	WDS	
DATE:	MAY 1997	
SCALE:	N.T.S.	

PURCELL
ASSOCIATES

SHEET NO.
5 OF 8