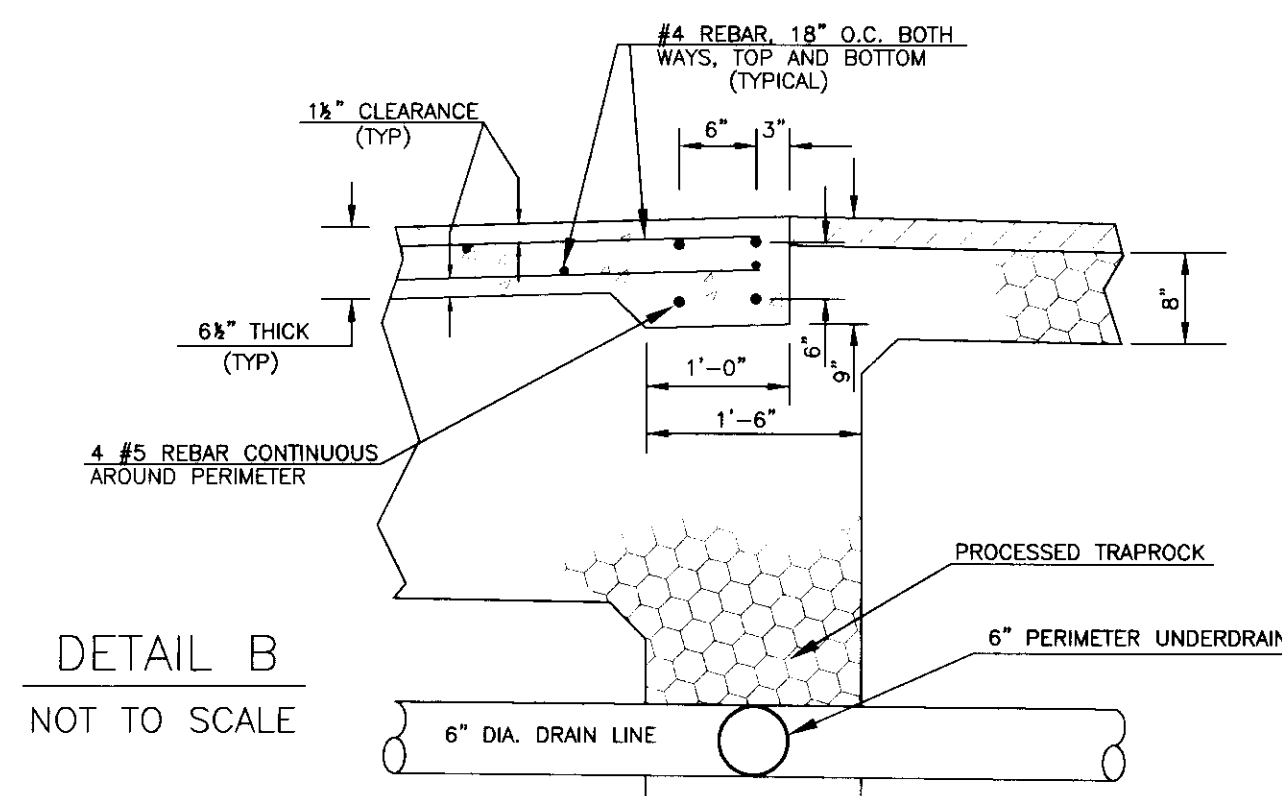


SECTION-VIEW VALVE PIT



DETAIL B
NOT TO SCALE

GENERAL NOTES-VALVE PIT

VALVE PIT shall be a reinforced precast concrete manhole, approximately 4'x4' I.D., 6" thick walls, height to suit actual job conditions, with open bottom and closed top with frame for hinged lid imbedded in the concrete top. Provide pipe "knockouts" as required.

Contractor shall coordinate the location and size of pipe openings with the manhole manufacturer. Contractor shall set the manhole on a bed of processed trap rock, 18" deep and extending 12" horizontally beyond the manhole. Manhole shall be Model MH 4x4 manufactured by Rontundo and Sons, Inc., Avon, Ct. or approved equal.

LID AND FRAME shall be made of cast iron and joined by a flush-type hinge. Lid shall be capable of being bolted to the frame on the remaining three sides with a minimum of four recessed tamper-proof bolts. Frame shall have a 23"x23" minimum clear opening. Lid and frame shall not have any projections extending above the surface. Lid and frame shall be Model R-6662-KH (Heavy Duty-T Hinged) as manufactured by Neenah Foundry, Madison, Wisconsin or approved equal.

TAMPER-PROOF BOLTS shall be the Man-Lock as manufactured by McGard Special Products Div., Orchard Park, N.Y. Manufacturer shall provide the bolts and wrenches with a special pattern registered for the exclusive use by the City of Hartford, CT. Provide two (2) large "T" handle keys, part No. 110004, and the weather protective bolt caps. At the end of the installation the two keys shall be turned over to the designated supervisor for the City of Hartford, who shall be required to sign a receipt for the keys.

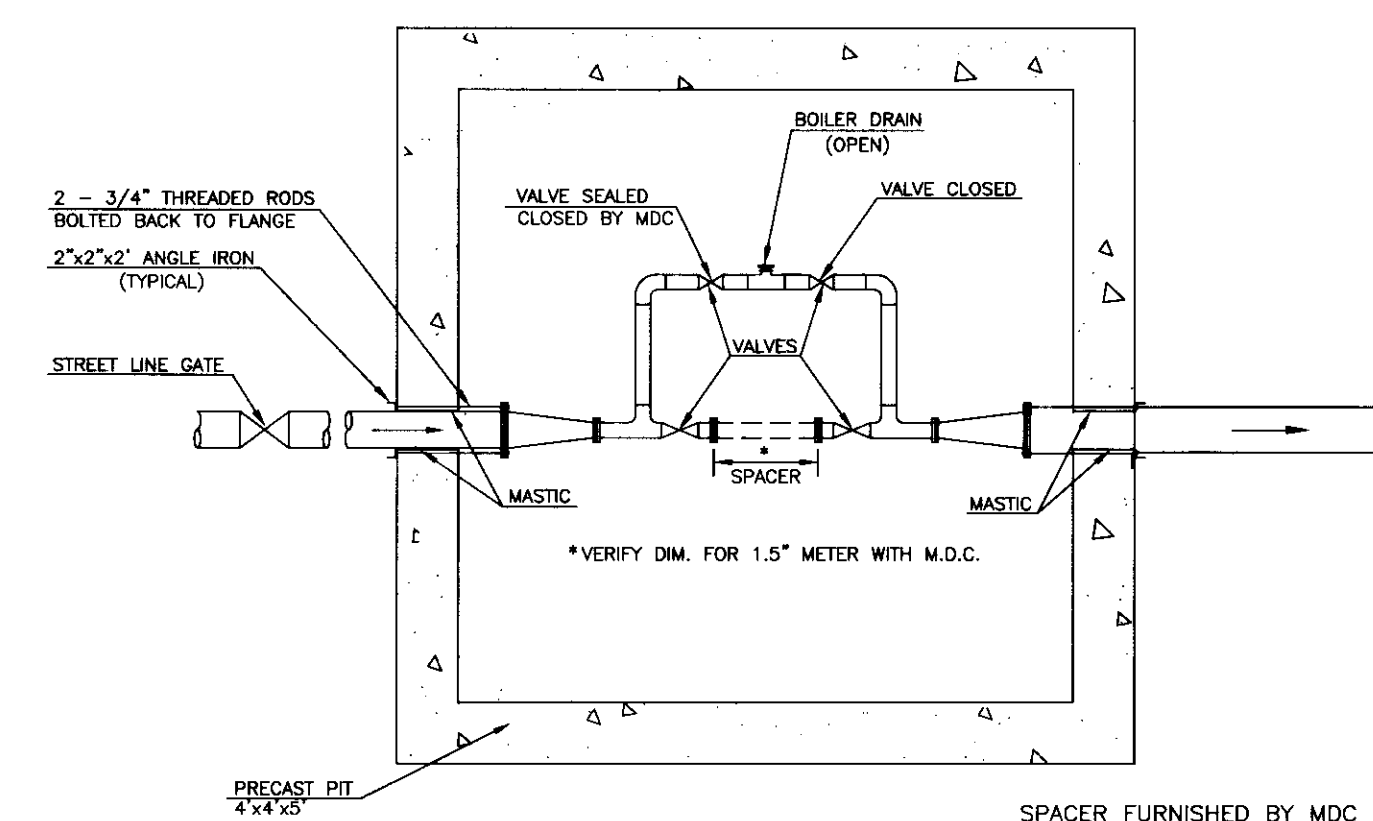
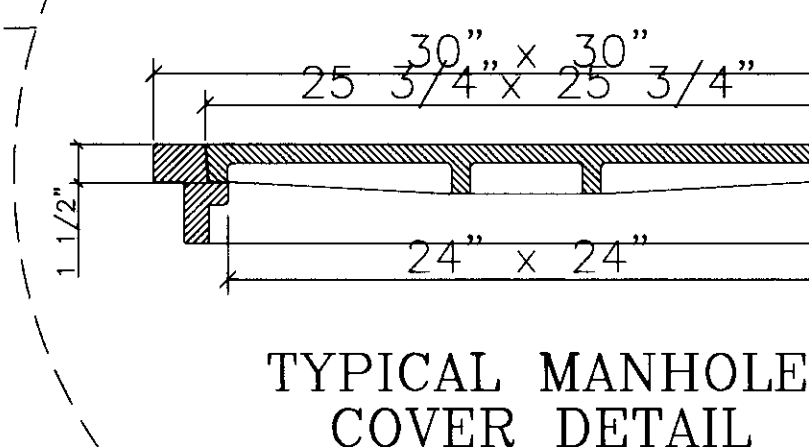
It shall be the Contractor's responsibility to coordinate the construction of the manhole with the other attached components to result in a complete working assembly as safe and tamper-proof as possible.

VALVES shall be manufactured by Fairbanks Company, or approved equal.

Gate valves shall be bronze, rated for 200 psi, with screwed ends, non-rising stem, solid wedges and tapered seat.

Valves which are to be opened and closed frequently are to be installed close to the secured manhole cover and are to be Lock Shield Fig. 0251. Provide two (2) handle keys for each Lock Shield valve which shall be turned over to the City designated supervisor. Also provide a drilled clearance hole in the iron manhole cover centered on the Lock Shield valve so that this valve can be operated without removing the manhole cover, therefore the valve shall be installed close enough to the cover such that the handle keys provided can be used.

Valves which are operated seasonally twice per year shall have the ventilated design handwheel. Valves shall be mounted vertically upright. Provide a fabricated long handle "T" wrench to allow operation of these valves without the necessity of entering the valve pit.



TYPICAL METER INSTALLATION
WITH BY-PASS FOR 1.5" METER
NOT TO SCALE

CITY OF HARTFORD, CONNECTICUT
DEPARTMENT OF PUBLIC WORKS
DEPARTMENT OF TRANSPORTATION

STANDARD CONSTRUCTION DETAILS
FOR
SOUTH ARSENAL NEIGHBORHOOD
IMPROVEMENTS

SUBMITTED BY: *[Signature]* RECOMMENDED BY: *[Signature]* APPROVED BY: *[Signature]*
PROJECT ENGINEER DIVISION MANAGER CITY ENGINEER
DRAWN: *[Signature]* SCALE: AS NOTED DAYBOOK NO. 011391
CHECKED: *[Signature]* DATE: JULY, 1997
FILE NAME: SANDYS.DWG

SHEET
5 OF 8

APPROVED:
CITY OF HARTFORD PARKS AND RECREATION DEPT. DATE