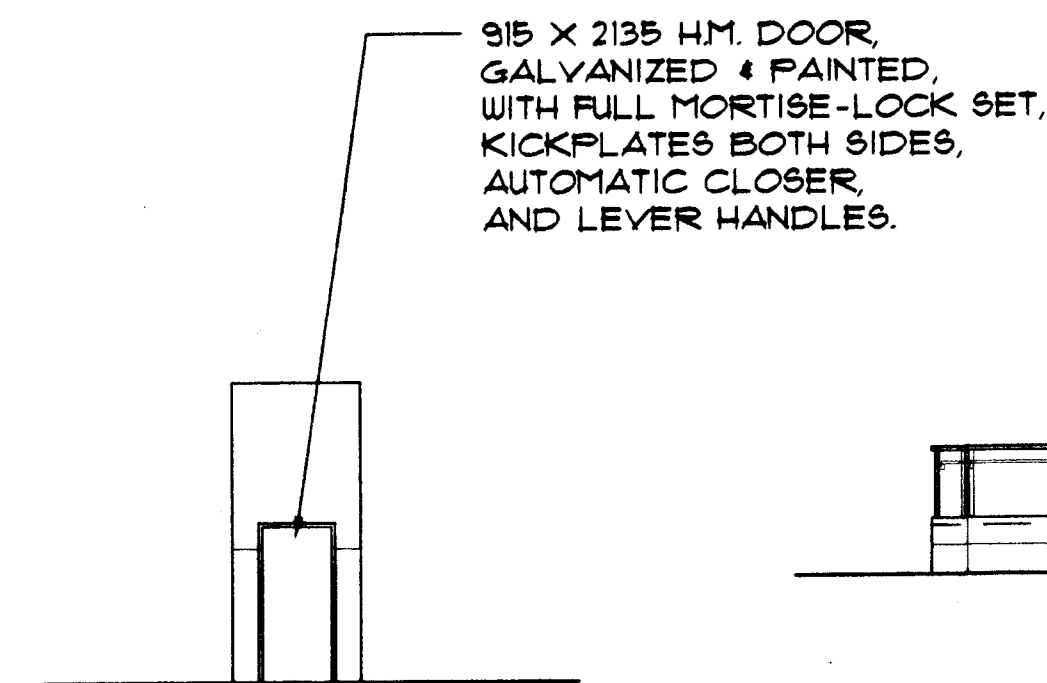
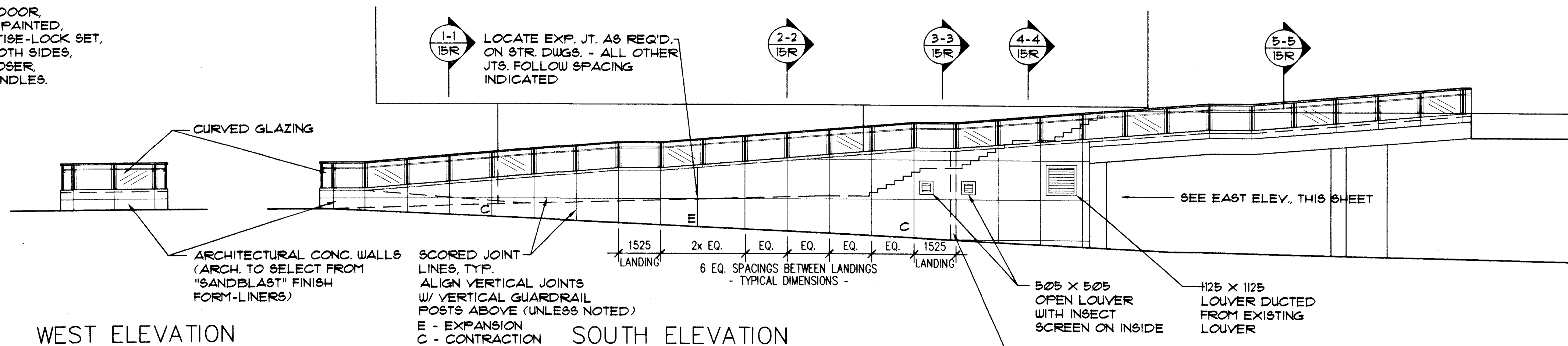


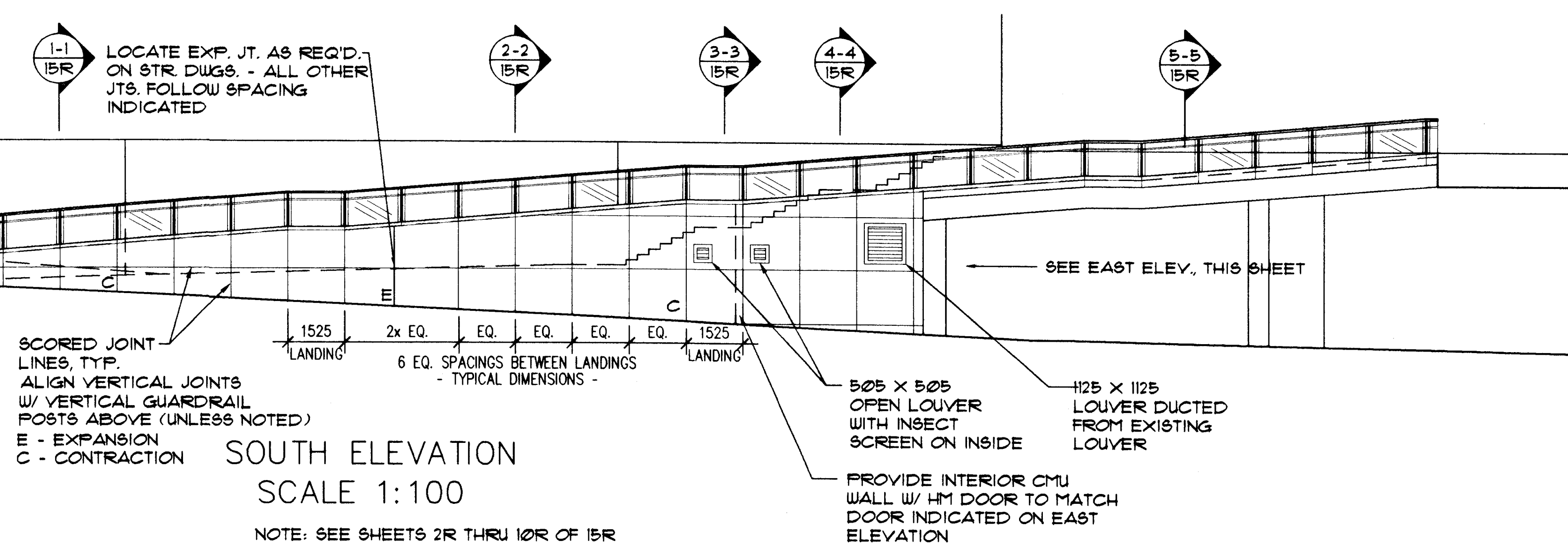
FHWA REGION NO.	STATE	TOWN	FED. AID PROJ. NO.	PROJ. NO.	YEAR	ROUTE NO.	SHEET NO.	TOTAL SHEETS
1	CONN	HARTFORD	TEA-PEDS(40)	63-529	1999		56	58



EAST ELEVATION  
SCALE 1:100

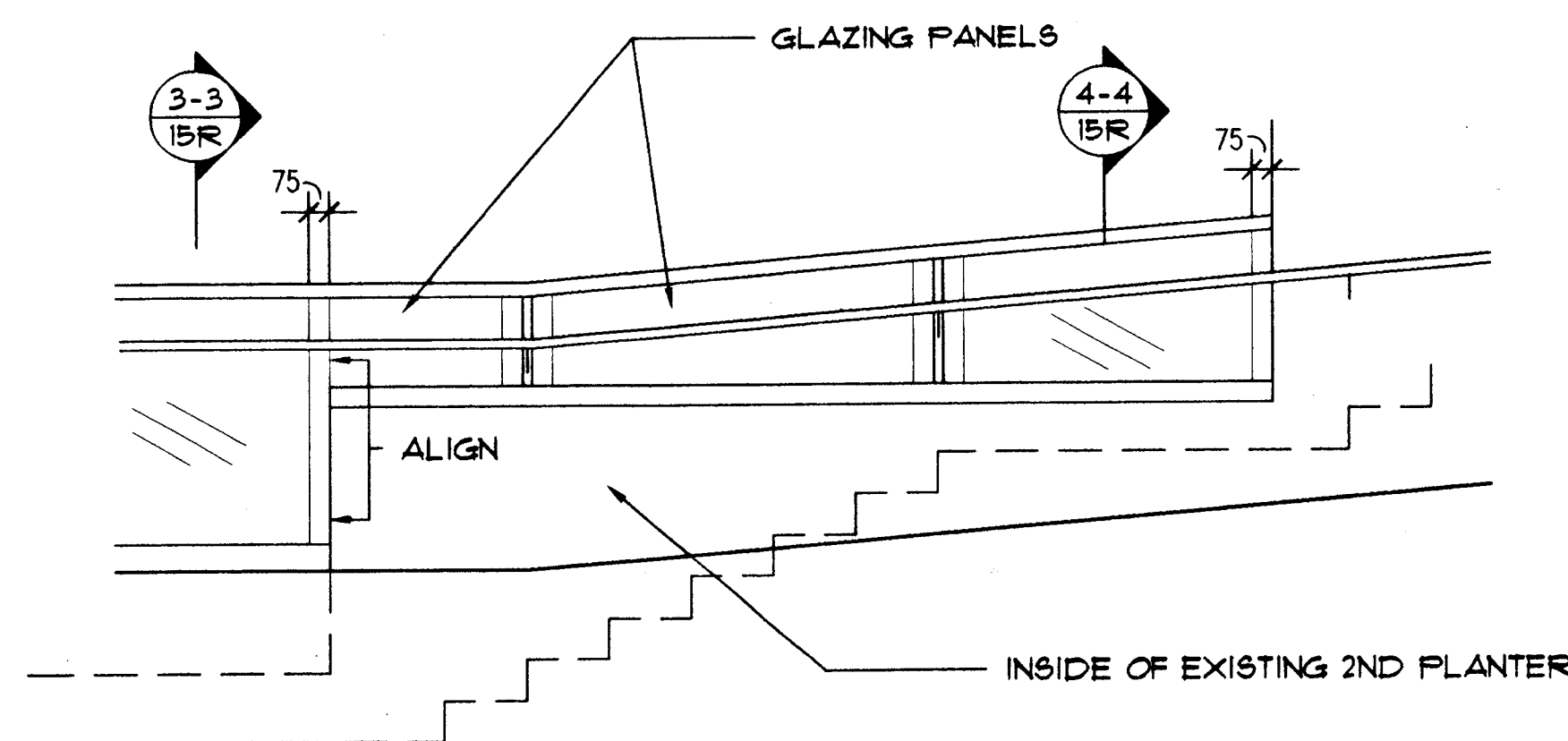


WEST ELEVATION  
SCALE 1:100

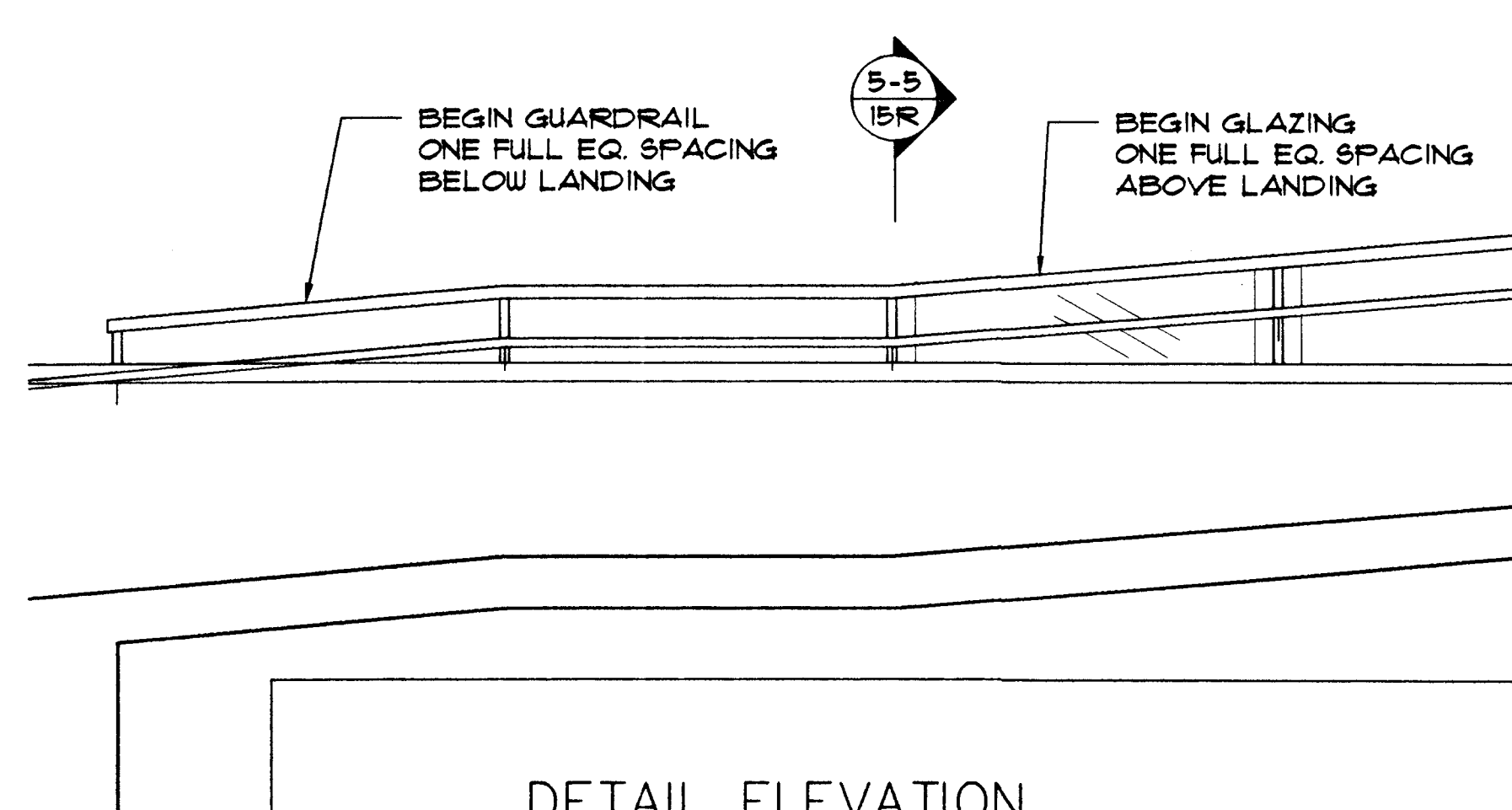


SOUTH ELEVATION  
SCALE 1:100

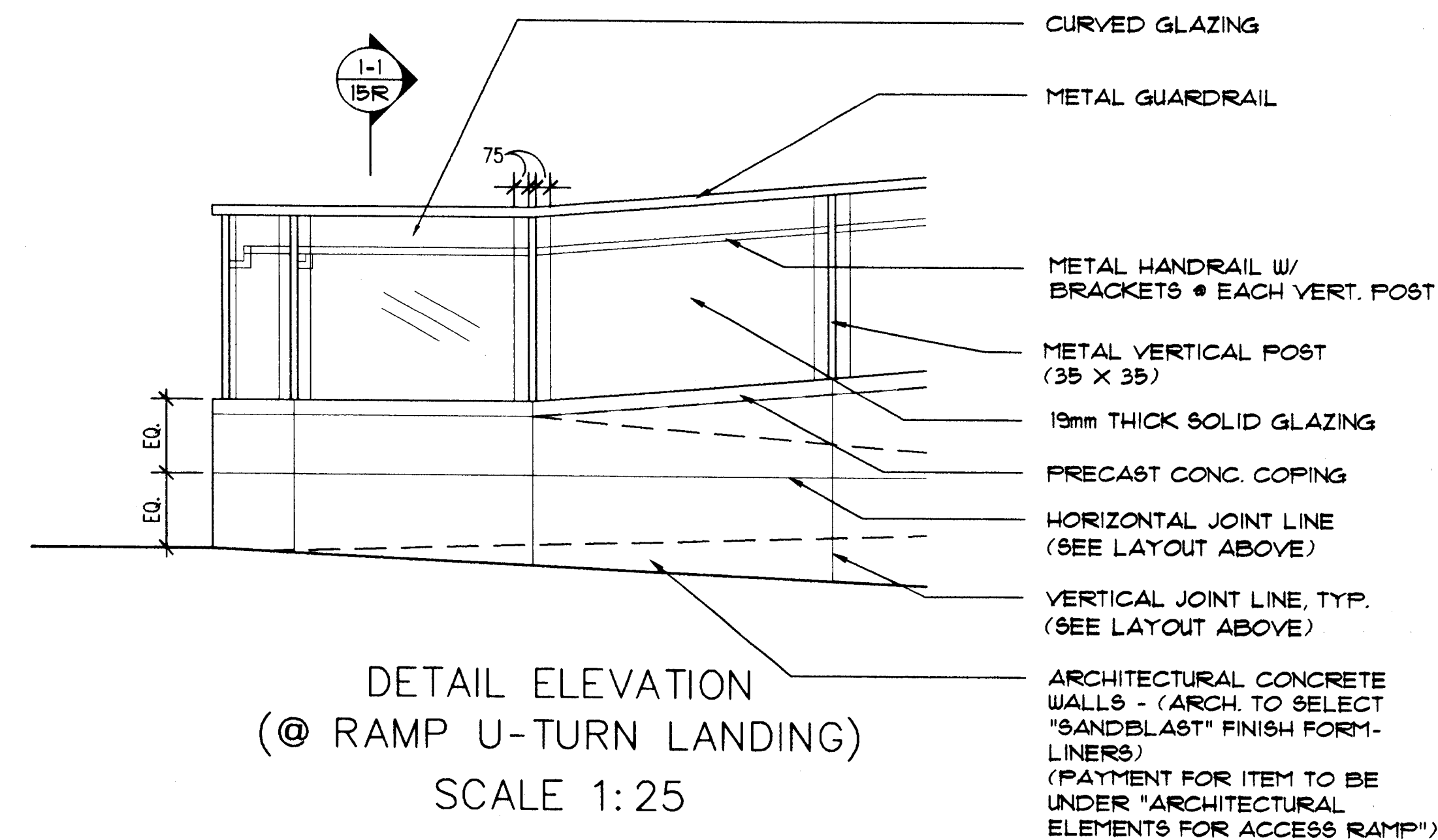
NOTE: SEE SHEETS 2R THRU 10R OF 15R  
FOR OVERALL DIMENSIONS



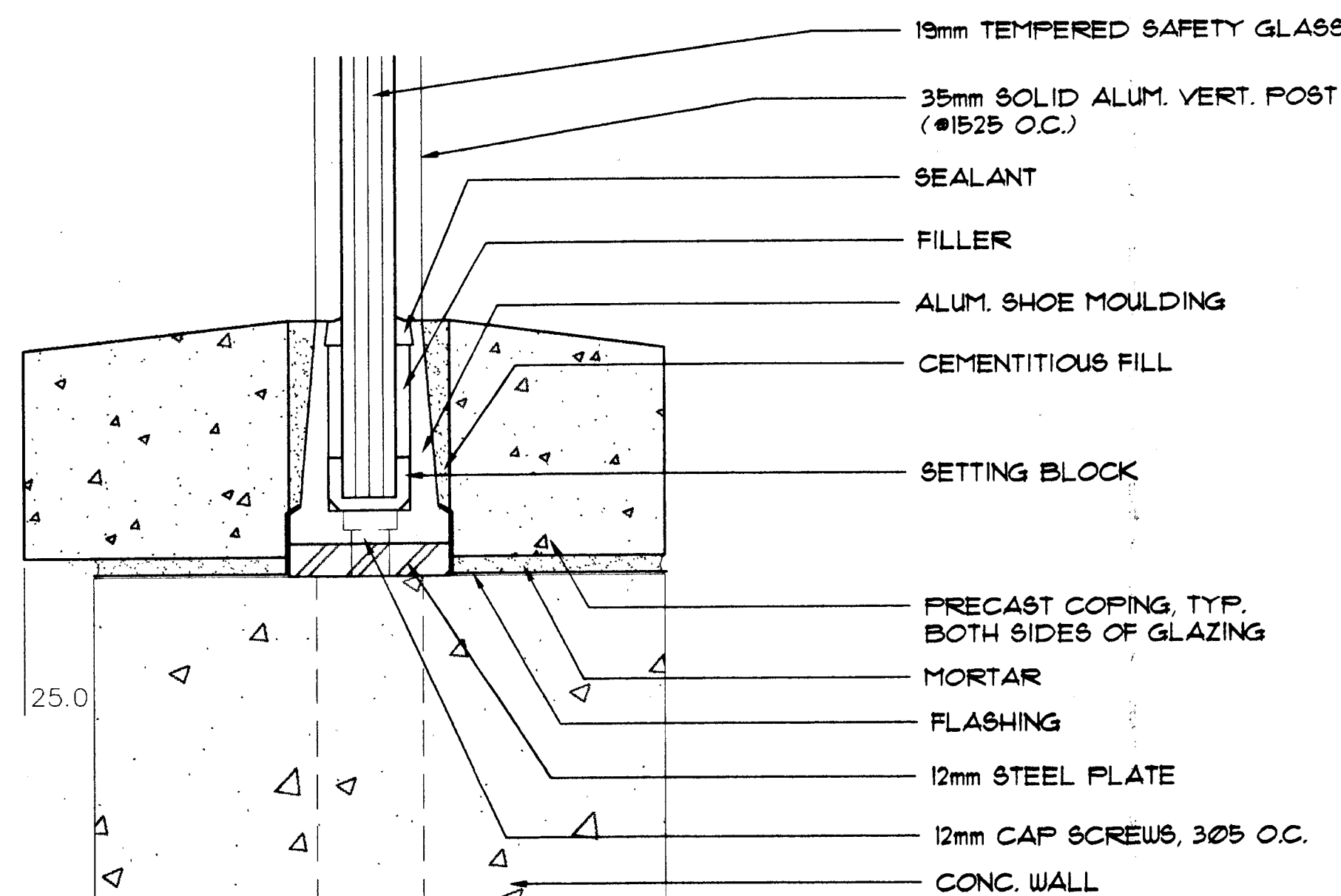
DETAIL ELEVATION  
(@ INSIDE OF 2ND PLANTER)  
SCALE 1:25



DETAIL ELEVATION  
(@ INSIDE OF TOP PLANTER)  
SCALE 1:25



DETAIL ELEVATION  
(@ RAMP U-TURN LANDING)  
SCALE 1:25



ALUM. SHOE MOULDING DETAIL - SCALE 1:2

GENERAL NOTES:

- SEE DETAILS ON SHEET 15R FOR SECTIONS INDICATED ON DRAWINGS
- SEE SHEET 1R OF 15 R FOR JOINT DETAILS
- ALL DIMENSIONS SHOWN ARE IN MILLIMETERS UNLESS OTHERWISE NOTED
- ALL ELEVATIONS SHOWN ARE IN METERS
- ESTIMATE ITEM: "ARCHITECTURAL ELEMENTS FOR ACCESS RAMP"

CITY OF HARTFORD

ACCESSIBLE RAMP

AT

CONSTITUTION PLAZA

GUARDRAIL AND CONCRETE WALL ELEVATIONS

ENGINEER: MACCHI ENGINEERS, LLC

DESIGNER: JS

DRAFTER: JS

CHECKER: TSK

NO.	DATE	DESCRIPTION	APPROVED	DATE
			<i>T.S. Kim</i>	9/15/99
REVISIONS			STRUCTURE NO.	BRIDGE LOG NO.
				14R OF 15R