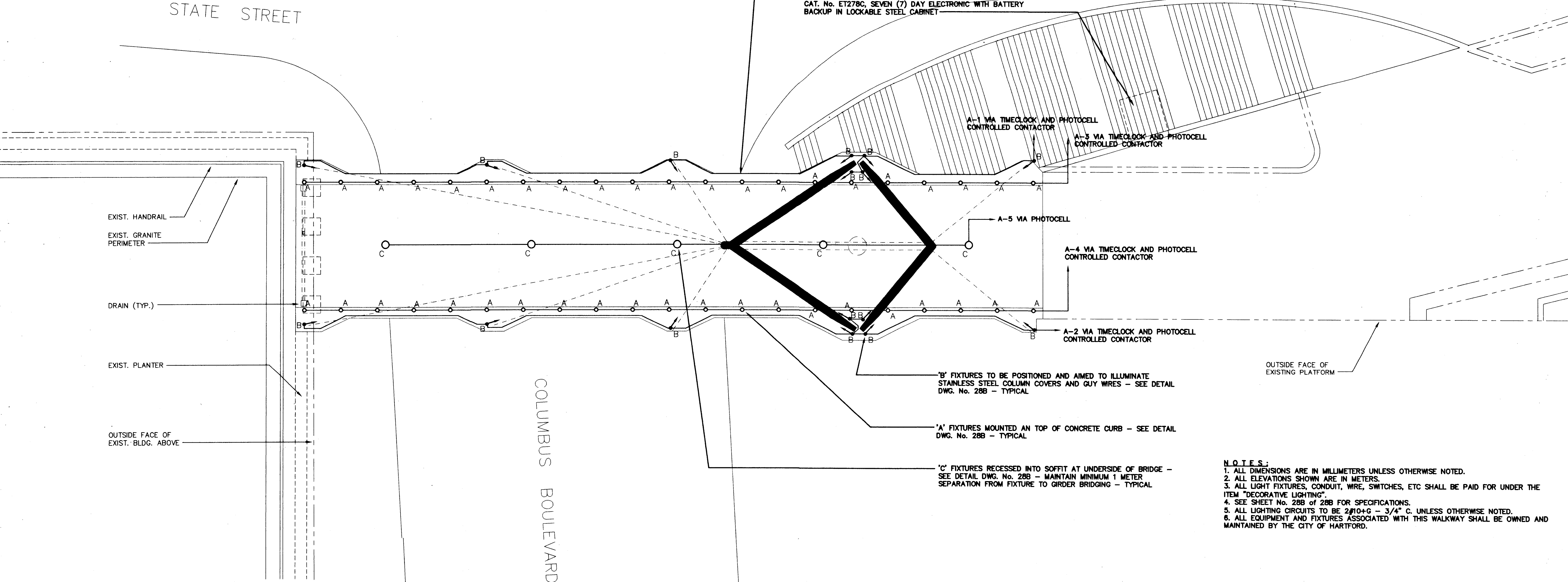


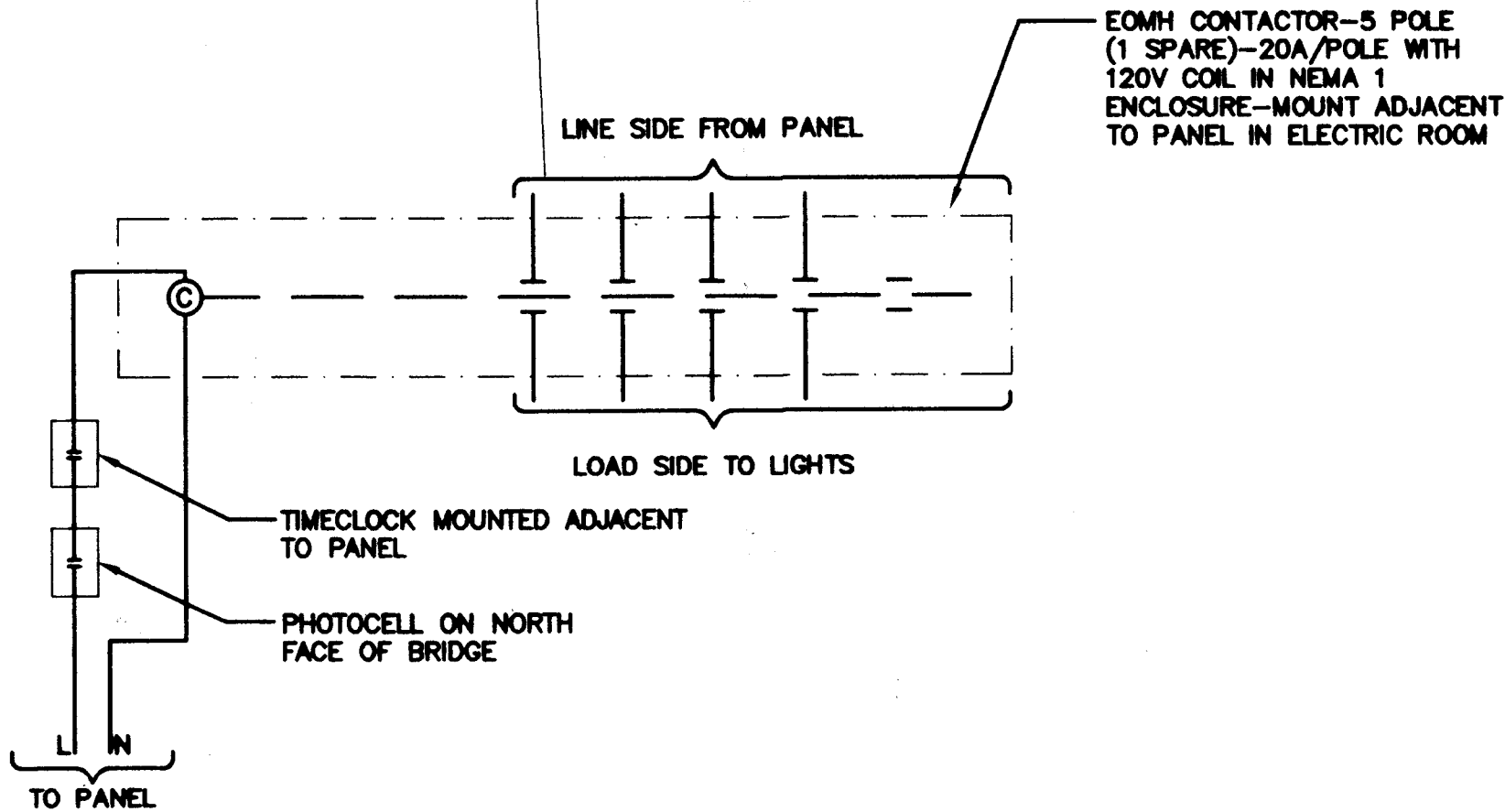
FHWA REGION NO.	STATE	TOWN	FED. AID PROJ. NO.	PROJ. NO.	YEAR	ROUTE NO.	SHEET NO.	TOTAL SHEETS
1	CONN	HARTFORD	TEA-PEDS(40)	63-529	1999		32	58

INSTALL PHOTOCELLS FOR CONTROL OF LIGHTING CIRCUITS SHOWN ON NORTH FACE OF PEDESTRIAN BRIDGE - PHOTOCELLS SHALL BE INTERMATIC SERIES K4200, 120V, HEAVY DUTY STEM MOUNT ON 1/2" RGS WITH SWIVEL AND SLIDING LIGHT SHIELD - ROUTE CONDUIT IN SOFFIT SPACE BELOW BRIDGE TO CITY ELECTRIC ROOM - PHOTOCELL #1 TO CONTROL LIGHTING CONTRACTOR FEEDING CIRCUITS #1-4 - PHOTOCELL #2 TO CONTROL CIRCUIT #5

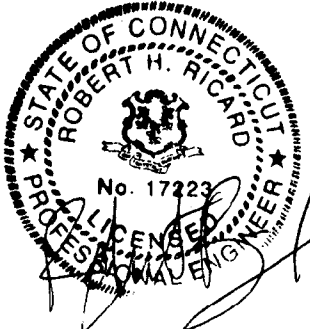
APPROXIMATE LOCATION OF EXISTING CITY ELECTRIC SERVICE ROOM BELOW STAIRS - VERIFY EXACT LOCATION - PROVIDE AND INSTALL SIX (6) NEW 20A 1P C/B'S IN EXISTING PANEL 'A' FOR SERVICE TO NEW LIGHT FIXTURES SHOWN (5) AND FOR POWER TO TIMECLOCK (1) - PROVIDE AND INSTALL NEW TIMECLOCK FOR CONTROL OF CIRCUITS 1-4 (SEE WIRING DIAGRAM THIS SHEET) - TIMECLOCK SHALL BE INTERMATIC CAT. No. ET278C, SEVEN (7) DAY ELECTRONIC WITH BATTERY BACKUP IN LOCKABLE STEEL CABINET



- NOTES:**
- 1. ALL DIMENSIONS ARE IN MILLIMETERS UNLESS OTHERWISE NOTED.
 - 2. ALL ELEVATIONS SHOWN ARE IN METERS.
 - 3. ALL LIGHT FIXTURES, CONDUIT, WIRE, SWITCHES, ETC SHALL BE PAID FOR UNDER THE ITEM "DECORATIVE LIGHTING".
 - 4. SEE SHEET No. 288 of 288 FOR SPECIFICATIONS.
 - 5. ALL LIGHTING CIRCUITS TO BE 2#10+G - 3/4" C. UNLESS OTHERWISE NOTED.
 - 6. ALL EQUIPMENT AND FIXTURES ASSOCIATED WITH THIS WALKWAY SHALL BE OWNED AND MAINTAINED BY THE CITY OF HARTFORD.



LIGHTING WIRING SCHEMATIC
N.T.S.



NO.	DATE	DESCRIPTION
REVISIONS		

Legnos and Cramer, Inc.
Consulting Engineers
Mechanical & Electrical

74 Forest Street
Hartford, Ct. 06105-3598
Tel. (860) 246-8875 Fax (860) 525-2544
E-MAIL: legnos@ctlnai.net

CITY OF HARTFORD

**ACCESS RAMP
TO
CONSTITUTION PLAZA
LIGHTING PLAN**

ENGINEER: MACCHI ENGINEERS, LLC			
DESIGNER: BJZ	DRAFTER: WGS	CHECKER: BJZ	
APPROVED: <i>Robert B. Cramer</i>		DATE: 9/14/99	
STRUCTURE NO.		BRIDGE LOG NO.	STRUCTURE SHEET NO. 27B of 28B