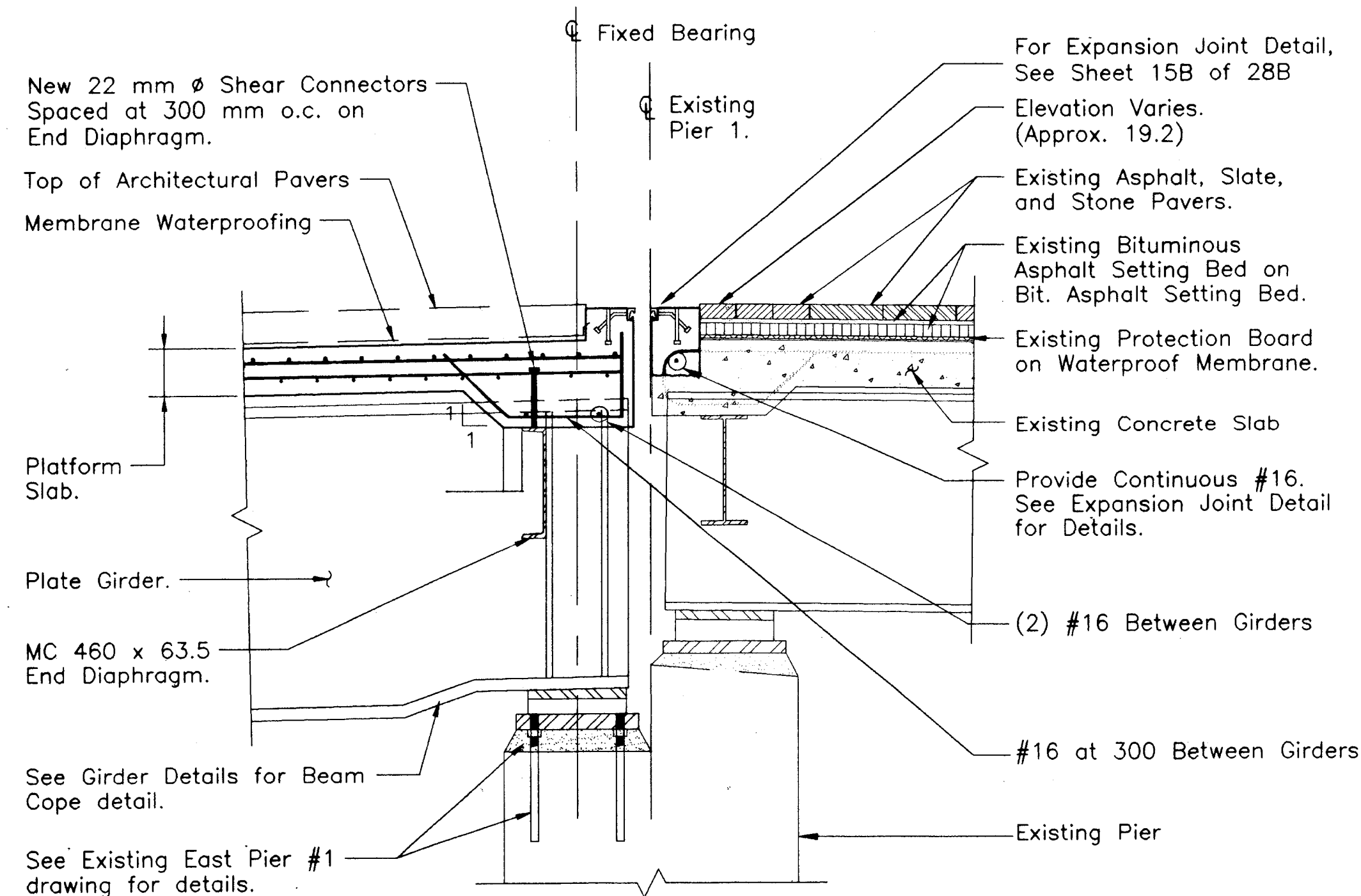
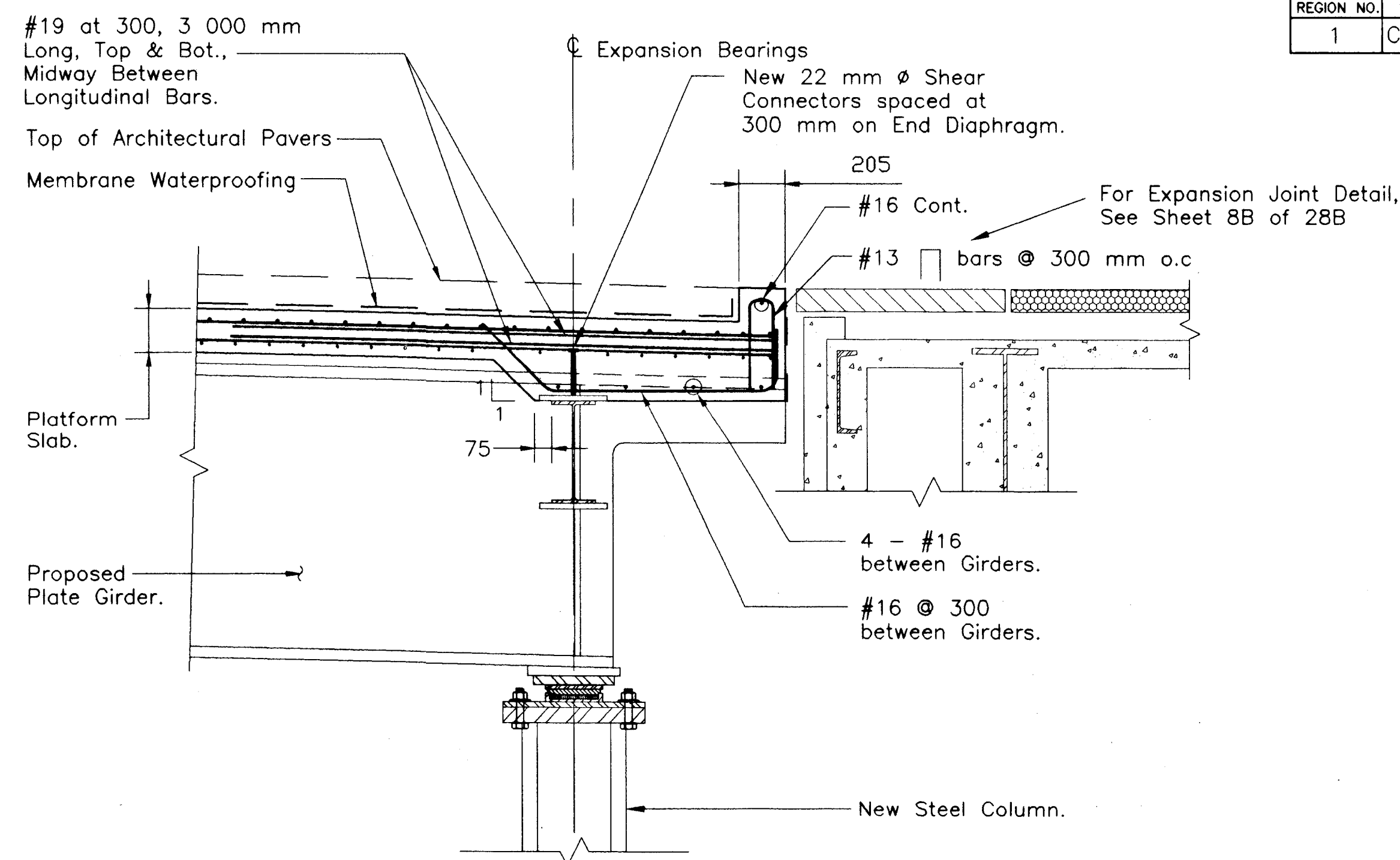


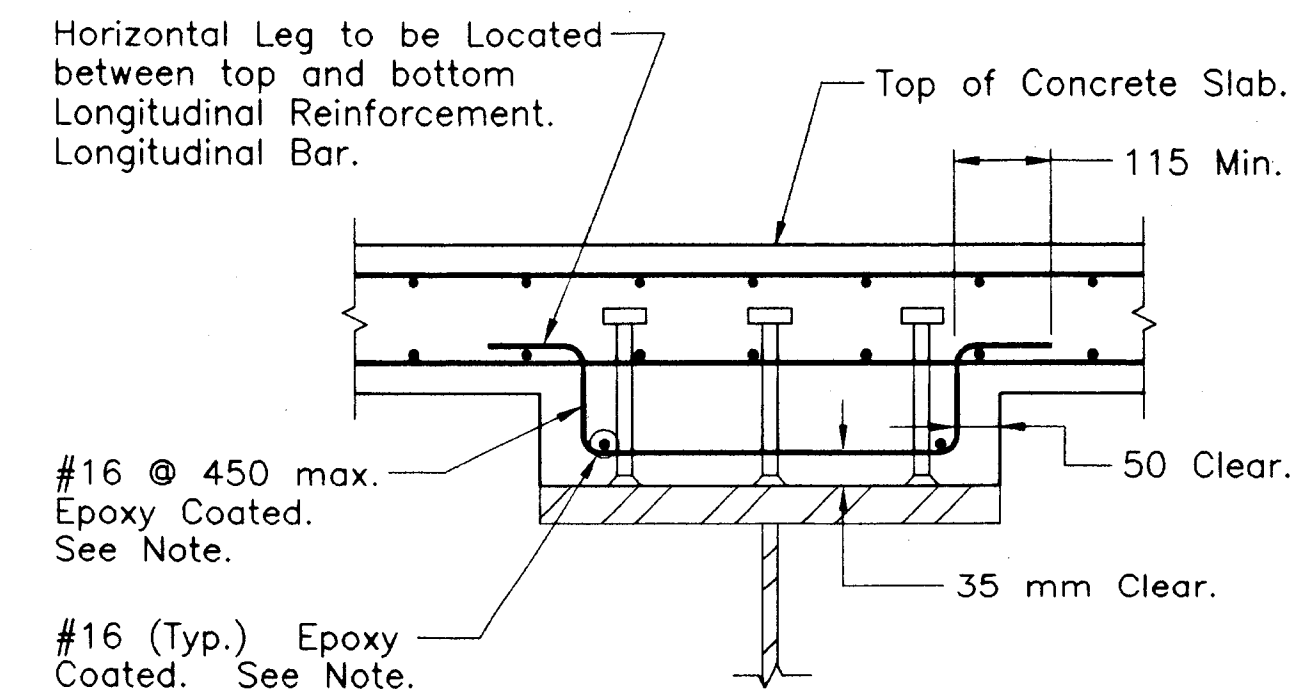
| FHWA<br>REGION NO. | STATE | TOWN     | FED. AID<br>PROJ. NO. | PROJ. NO. | YEAR | ROUTE<br>NO. | SHEET<br>NO. | TOTAL<br>SHEETS |
|--------------------|-------|----------|-----------------------|-----------|------|--------------|--------------|-----------------|
| 1                  | CONN  | HARTFORD | TEA-PEDS(40)          | 63-529    | 1999 | -            | 22           | 58              |



**SECTION C-C**  
SCALE 1:20



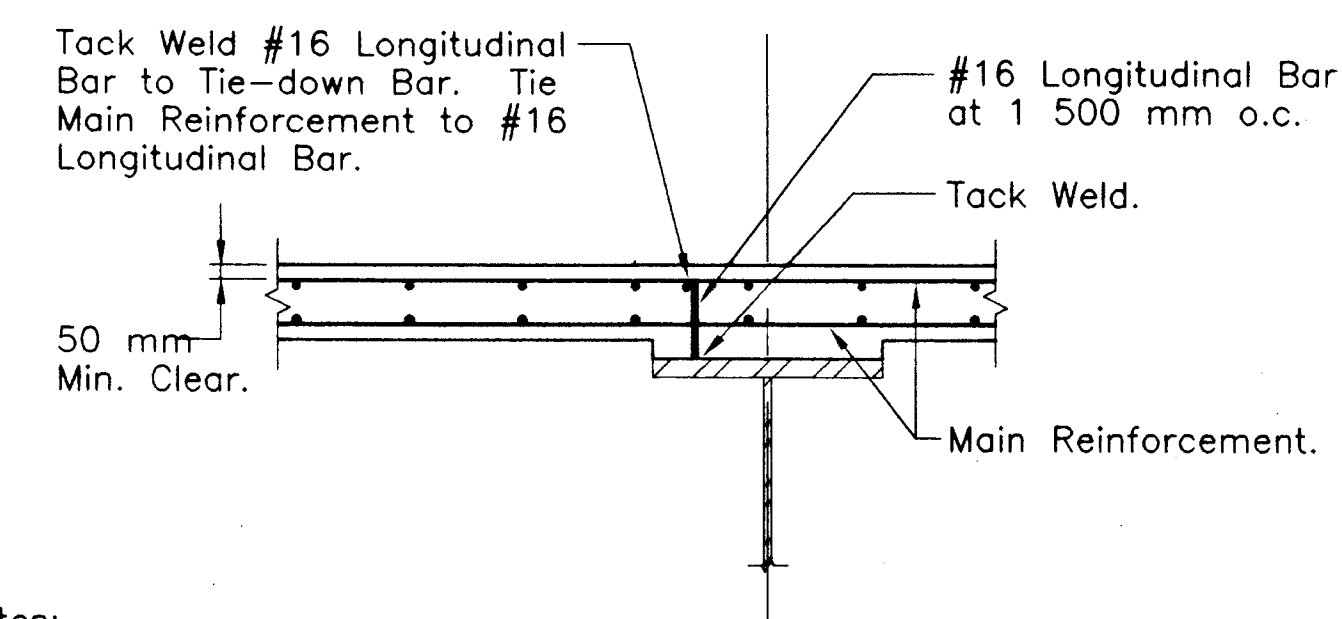
**SECTION D-D**  
SCALE 1:20



Notes:

1. Haunch Reinforcement shown is for Haunch Depth of 100 to 150 mm.
2. Reinforcement not Required for Haunch less than 100 mm.
3. Minimum Haunch Depth shall be 50 mm.

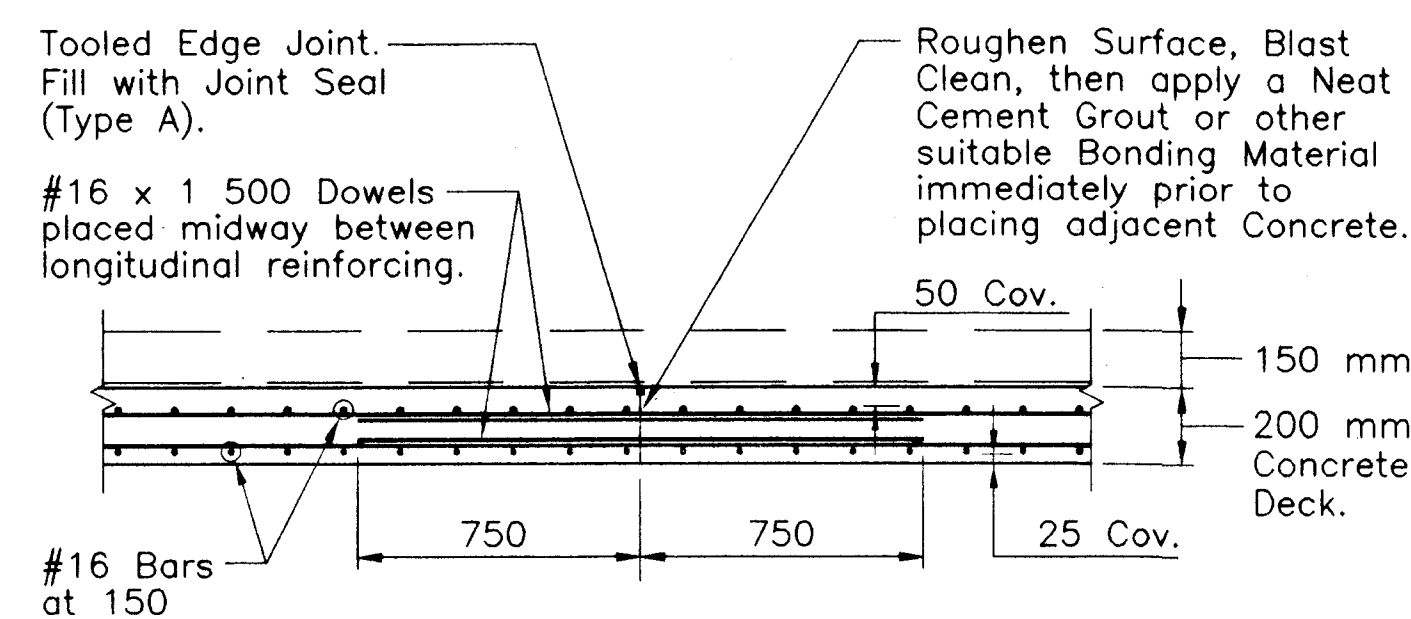
**HAUNCH REINFORCEMENT**  
SCALE 1:10



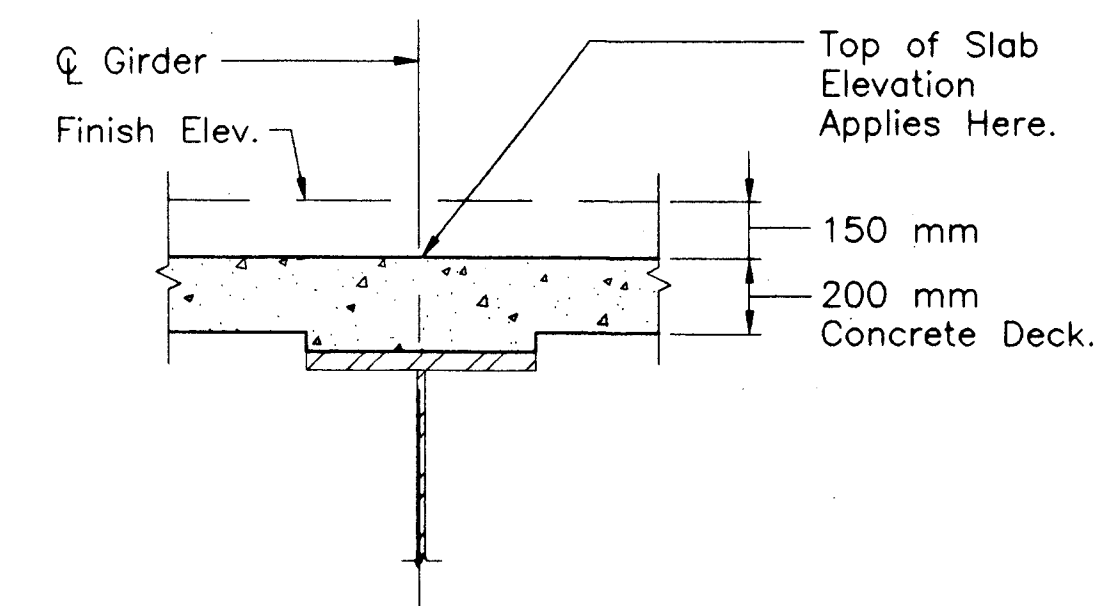
Notes:

1. Tie Down Bars do not exclude the use of Chairs for Supporting the Reinforcement Mat.
2. The Cost of Furnishing and placing Tie-down Bars shall be included in the item "Deformed Steel Bars" – Epoxy Coated.
3. Tie-down Bars and Longitudinal Bars shall clear Reinforcement.

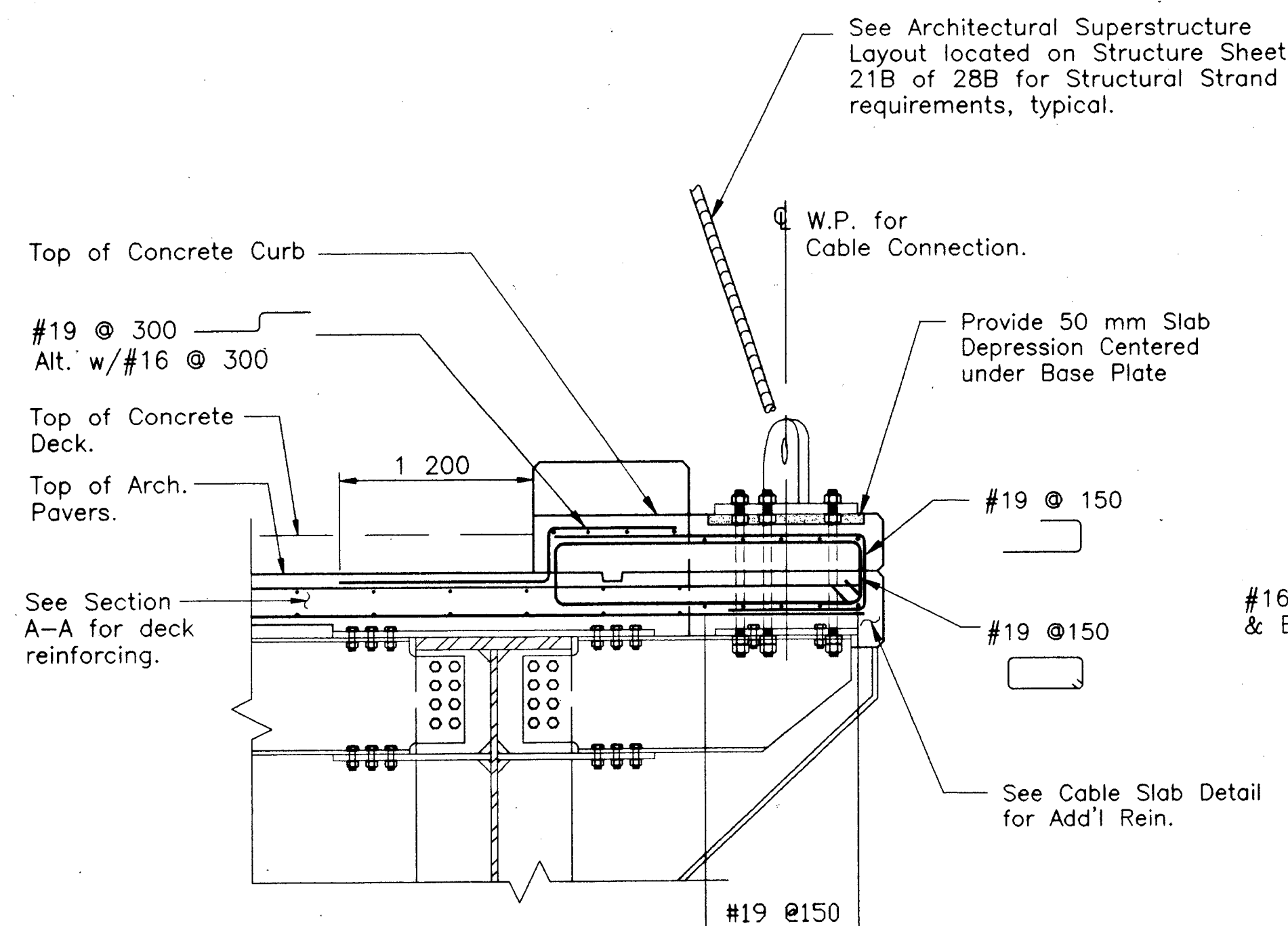
**TIE-DOWN FOR SLAB REINFORCEMENT**  
SCALE 1:20



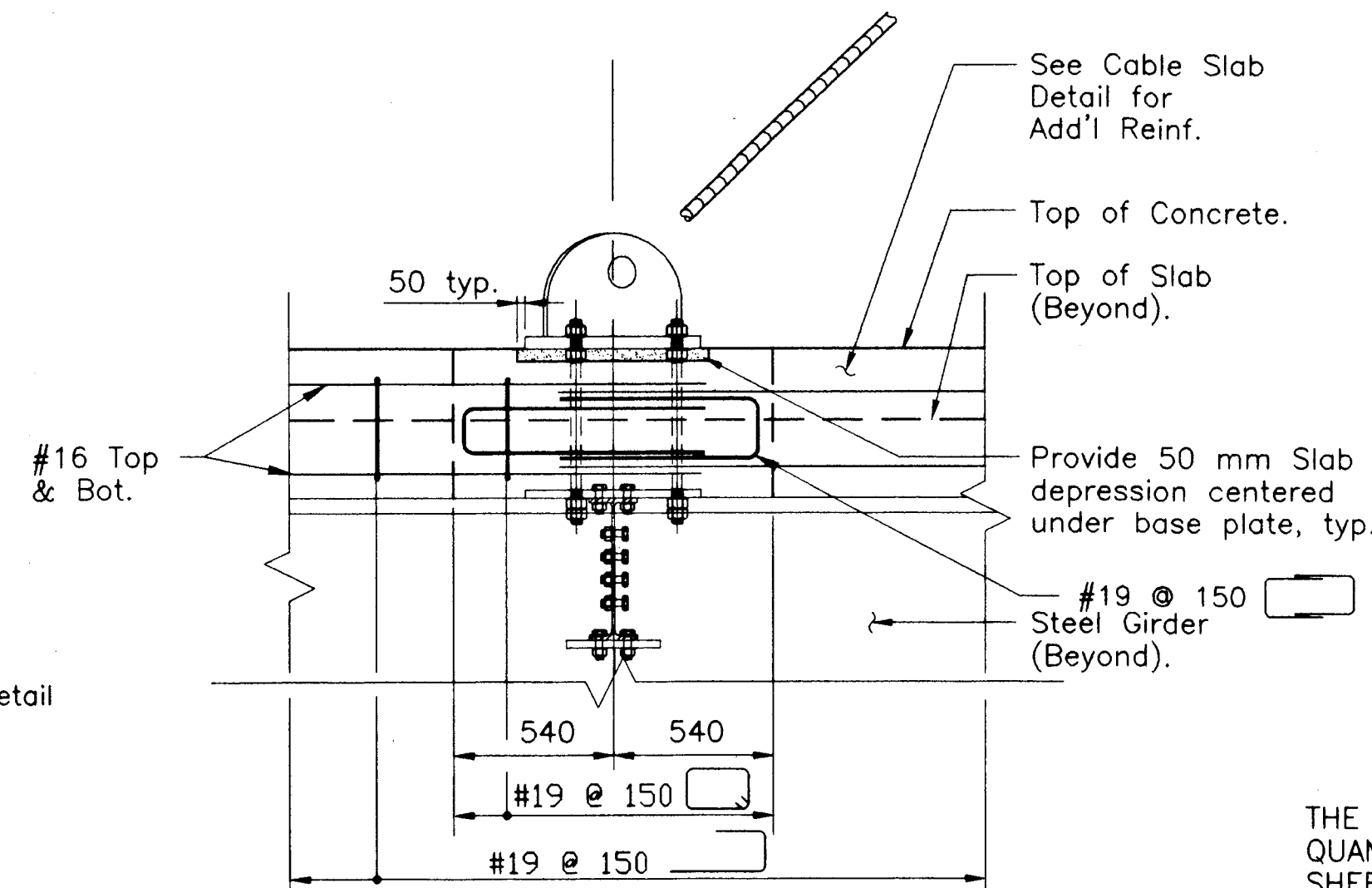
**TYPICAL TRANSVERSE CONSTRUCTION JOINT**  
SCALE 1:20



**LOCATION OF SLAB ELEVATIONS**  
SCALE 1:20



**SECTION B3-B3**  
SCALE 1:20



**SECTION B4-B4**  
SCALE 1:20

**NOTES:**

1. All dimensions shown are in millimeters unless otherwise noted.
2. All elevations are in meters.
3. See Sheet 31 of 58 for Architectural Paver details.
4. For Expansion Joint Details, see Structure Sheets 8B and 15B of 28B.
5. For Bearing Details, see Structure Sheets 4B and 15B of 28B.
6. For Steel details and notes, see Structure Sheets 10B through 14B of 28B.
7. Section A-A is located on Structure Sheet 16B of 28B.

THE INFORMATION, INCLUDING ESTIMATED QUANTITIES OF WORK, SHOWN ON THESE SHEETS IS BASED ON LIMITED INVESTIGATIONS AND IS IN NO WAY WARRANTED TO INDICATE THE TRUE CONDITIONS OR ACTUAL QUANTITIES OR DISTRIBUTION OF QUANTITIES OF WORK WHICH WILL BE REQUIRED.

|           |      |             |                                 |                 |                     |
|-----------|------|-------------|---------------------------------|-----------------|---------------------|
|           |      |             | COLUMBUS BOULEVARD              |                 |                     |
|           |      |             | SLAB DETAILS                    |                 |                     |
|           |      |             | ENGINEER: MACCHI ENGINEERS, LLC |                 |                     |
|           |      |             | DESIGNER: DC                    | DRAFTER: DC/MPJ | CHECKER: JB         |
| NO.       | DATE | DESCRIPTION | APPROVED                        | DATE: 9-17-99   |                     |
| REVISIONS |      |             | STRUCTURE NO.                   | BRIDGE LOG NO.  | STRUCTURE SHEET NO. |
|           |      |             |                                 |                 | 17B of 28B          |