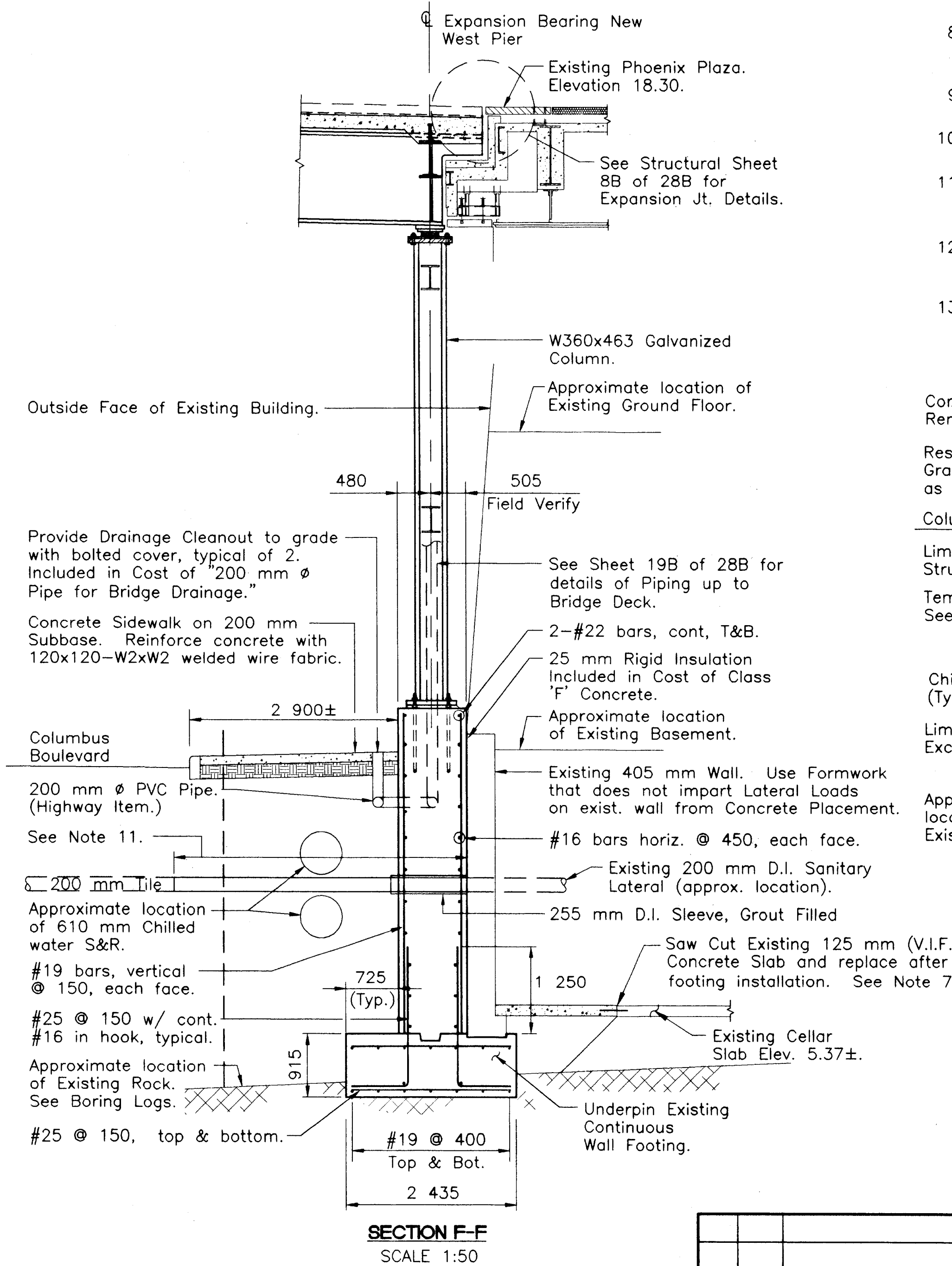
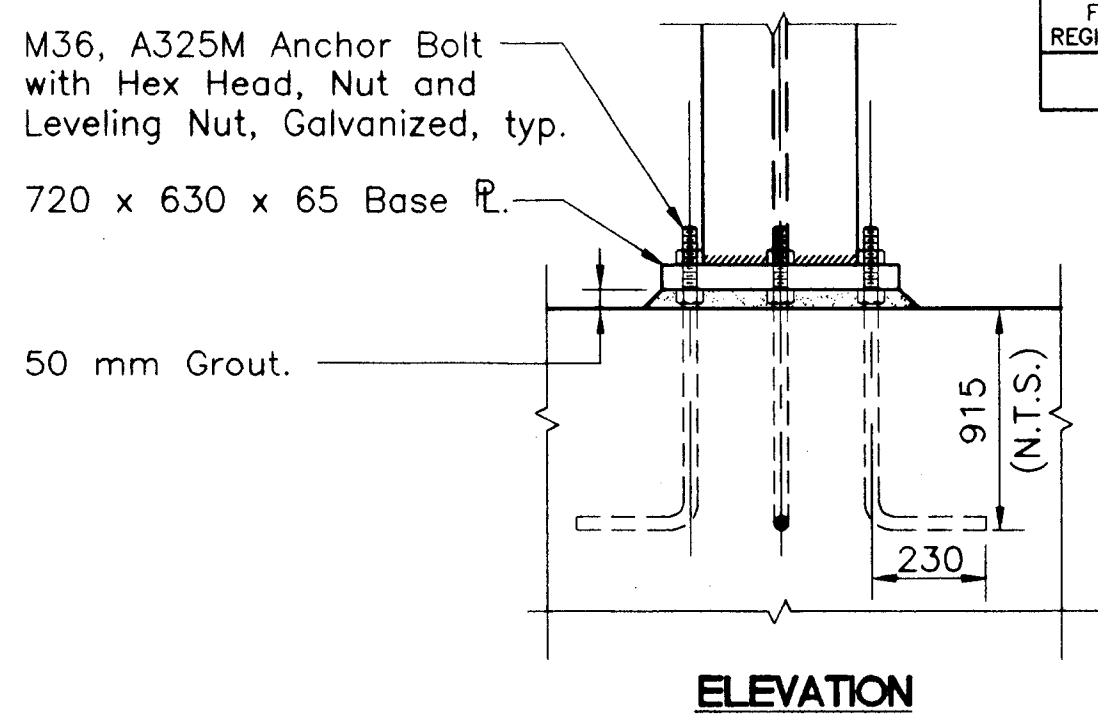


NOTES:

-
- Concrete Sidewalk to be Removed and Replaced.
- Reset Exist. Granite Curb as needed.
- Columbus Boulevard
- Limits of Pervious Structural Backfill.
- Temporary Sheet Piling See Note 12.
- 200 mm Tile
- Chilled Water S&R (Typ.) See Note 8
- Limits of Structure Excavation (Complete).
- Approximate location of Existing Rock.
- 1 000± N/S Sides
- Vertical Pay Limit for Temporary Sheet Piling
- Earth Excavation.
- Class "F" Concrete
- Class "A" Concrete Underpinning
- Existing 405 mm wall.
- Exist. Sanitary Lateral. See Note 8.
- Existing Continuous Wall Footing.
- Cellar Floor Slab.
- See Note 7.
- Pervious Structural Backfill.
- 600
- 200 mm
- 1 800±
- 2 435
- 1:1
- TYPICAL PAY LIMITS**
- SCALE 1:50



THE INFORMATION, INCLUDING ESTIMATED QUANTITIES OF WORK SHOWN ON THESE SHEETS IS BASED ON LIMITED INVESTIGATIONS BY THE STATE AND IS IN NO WAY WARRANTED TO INDICATE THE TRUE CONDITIONS OR ACTUAL QUANTITIES OR DISTRIBUTION OF QUANTITIES OF WORK WHICH WILL BE REQUIRED.

			COLUMBUS BOULEVARD		
			NEW WEST PIER		
			ENGINEER: MACCHI ENGINEERS, LLC		
			DESIGNER: DC/DKH	DRAFTER: DC/DKH	CHECKER: JB
NO.	DATE	DESCRIPTION	APPROVED <i>James Bralman</i>		DATE: 9-17-99
REVISIONS			STRUCTURE NO.		STRUCTURE SHEET NO. 5B of 28B