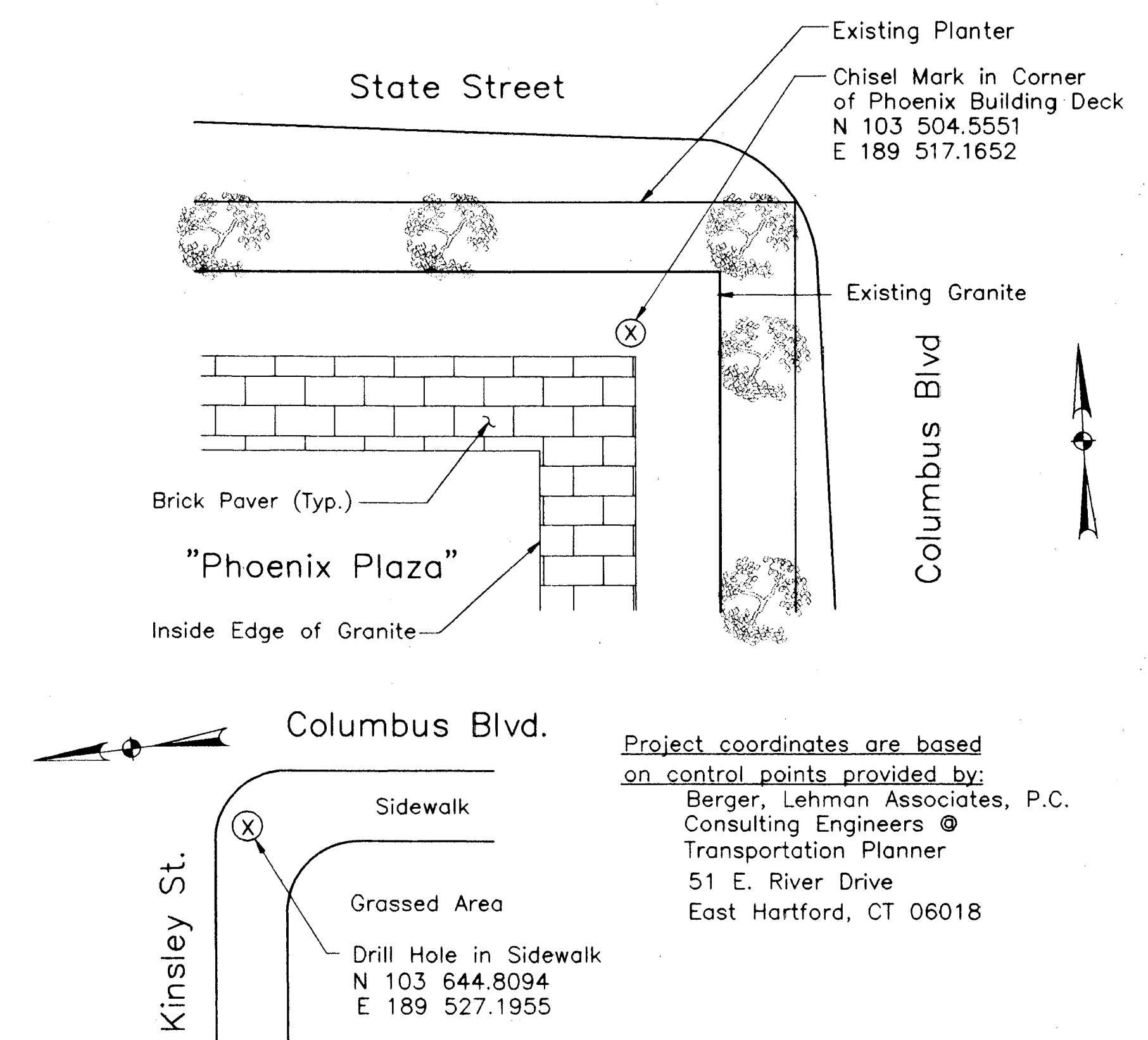
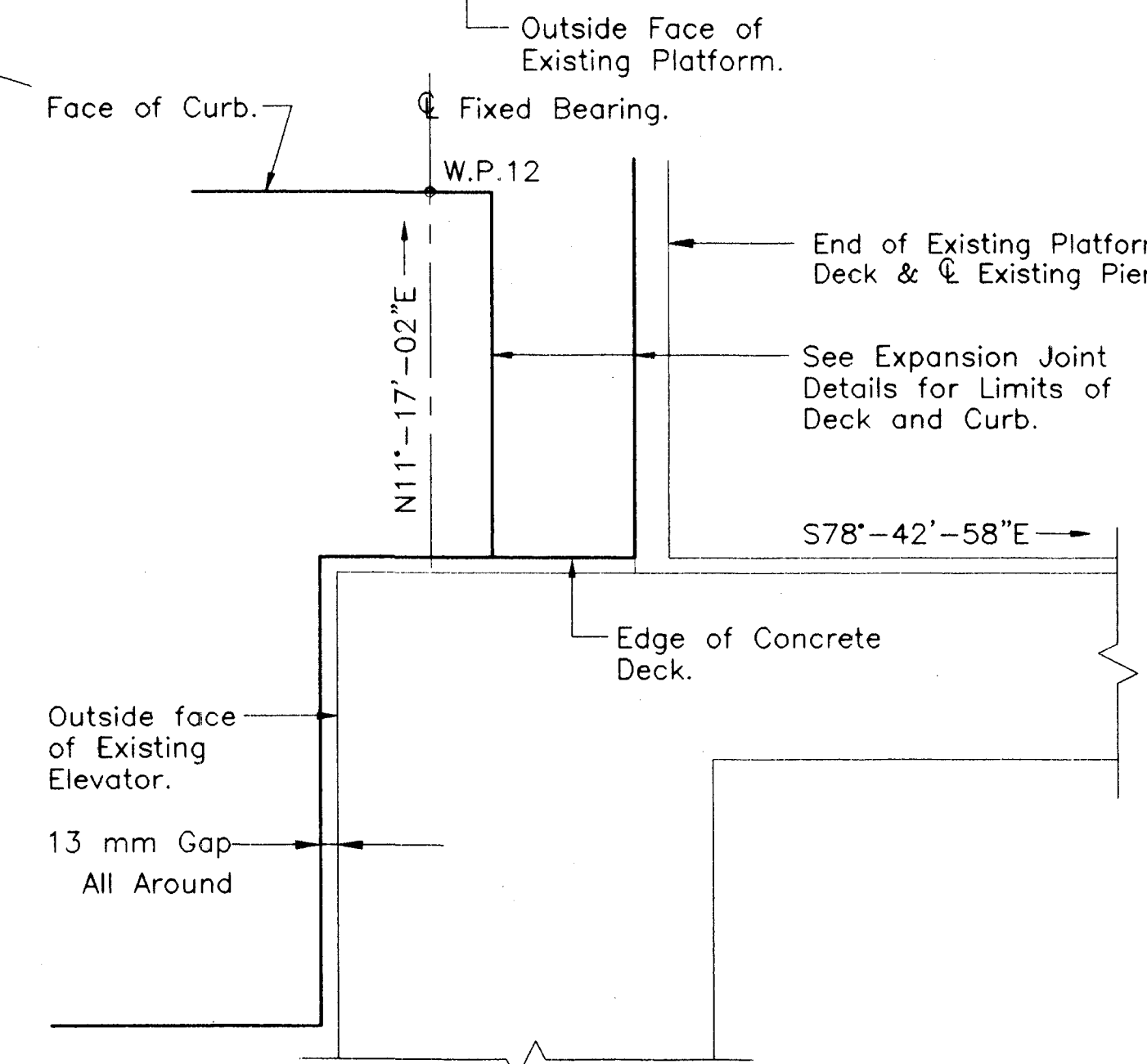
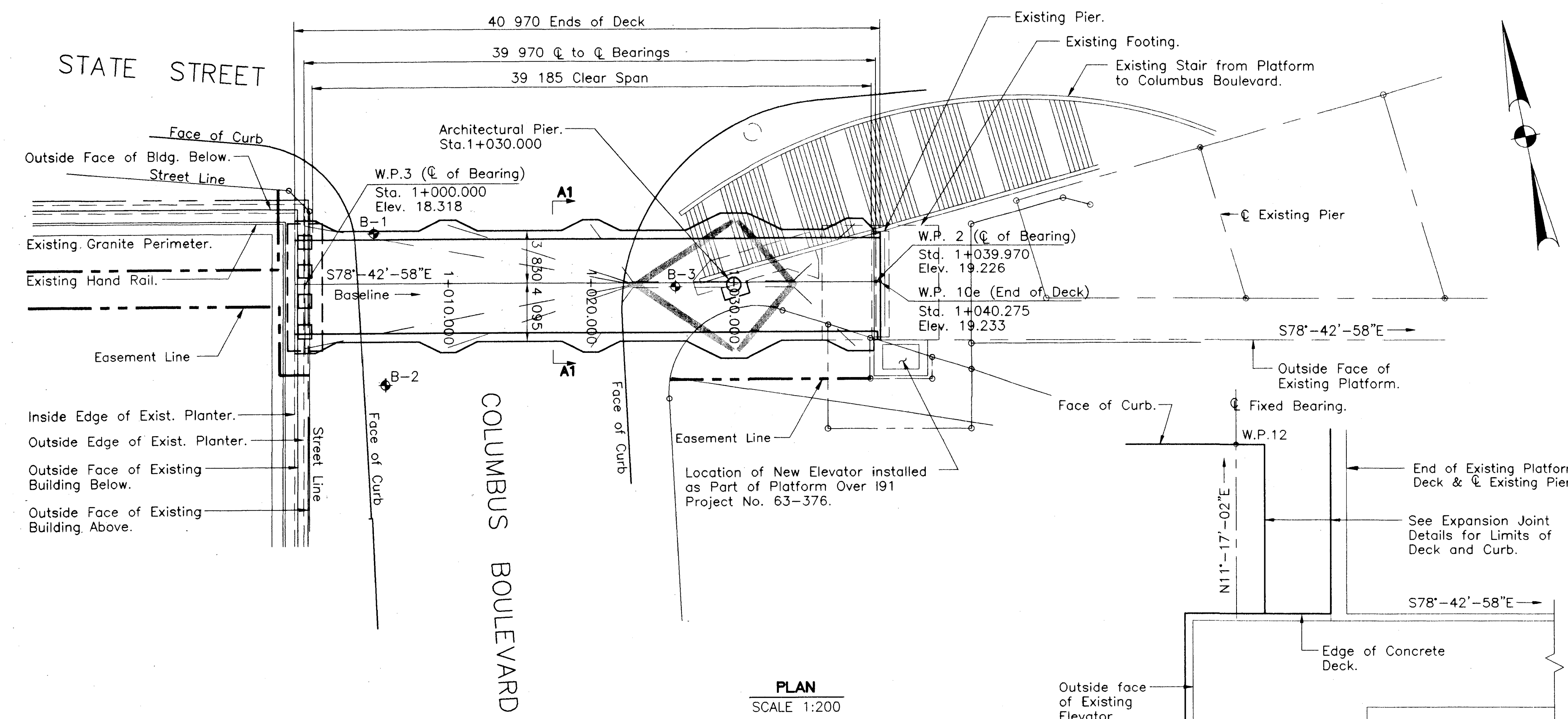
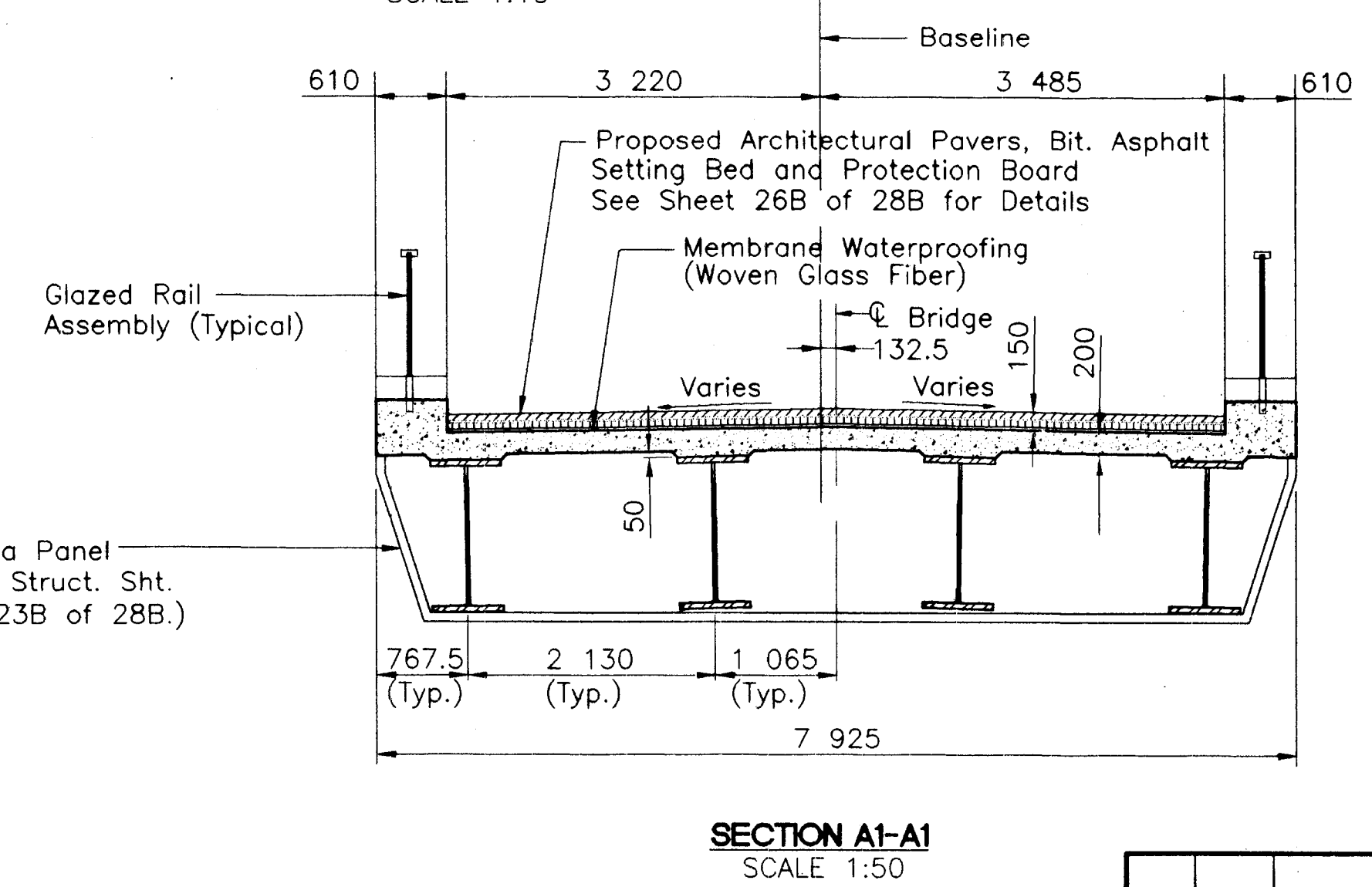
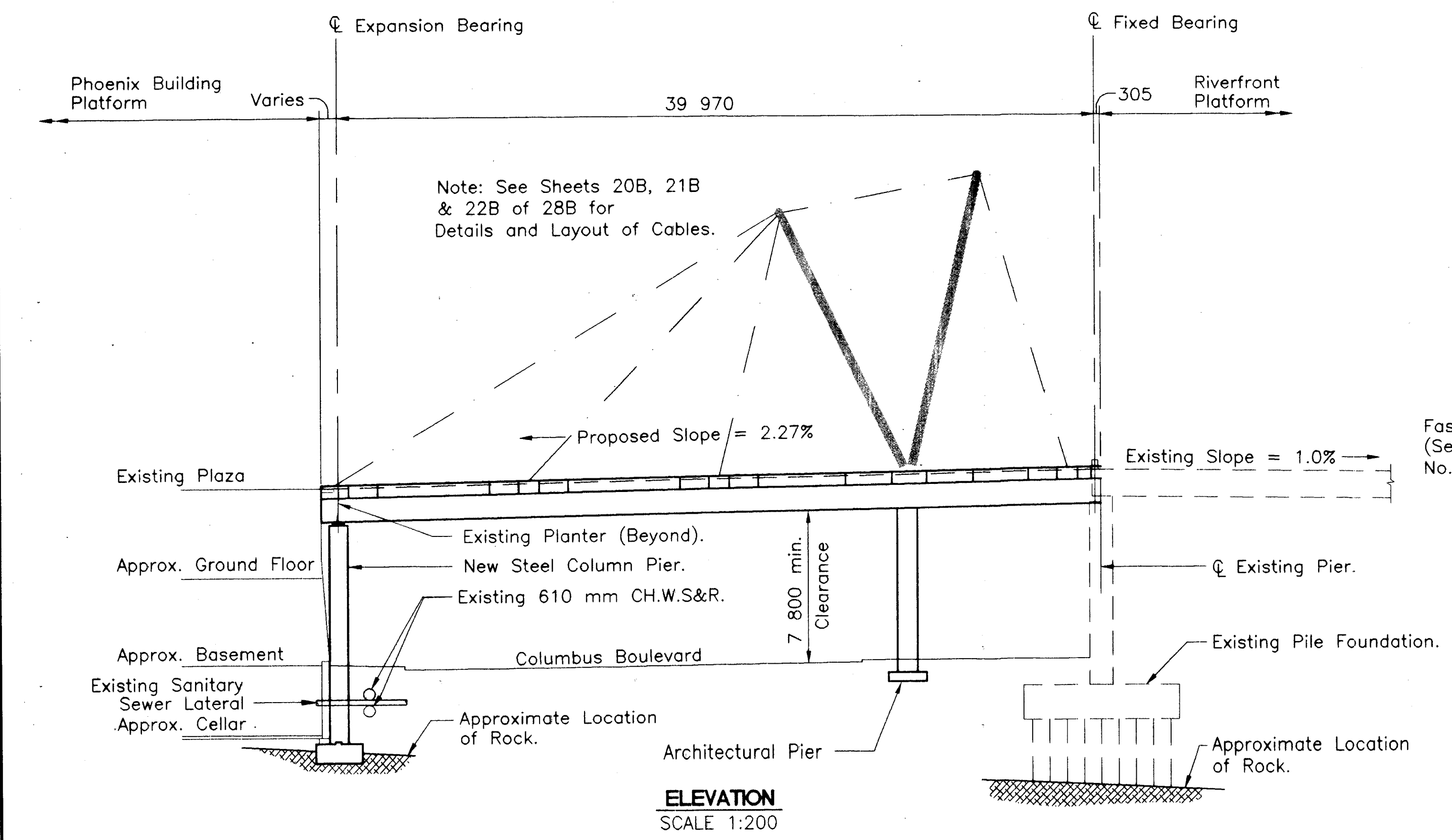


FHWA REGION NO.	STATE	TOWN	FED. AID PROJ. NO.	PROJ. NO.	YEAR	ROUTE NO.	SHEET NO.	TOTAL SHEETS
1	CONN	HARTFORD	TEA-PEDS(40)	63-529	1999	-	6	58



- GENERAL NOTES:**
- All dimensions shown are in millimeters unless otherwise noted.
 - All elevations shown are in meters.
 - Existing Pier, Pier Foundation, Stair, Elevator and Platform Located on the East Side of Columbus Boulevard is Currently Being Installed as Part of the New Platform Over I-91 Project 63-376.
 - For Rail Details, See Structure Sheet No. 25B of 28B.
- SEQUENCE OF CONSTRUCTION:**
- Install concrete barriers as shown on the Sign Layout Drawing.
 - Construct West Foundation and Pier. One lane on Columbus Boulevard may be closed during placing of concrete and erection of steel columns.
 - Make modifications to Existing East Pier.
 - Close Columbus Boulevard as shown on Detour Layout. See Maintenance and Protection of Traffic Specification for limitations of operations. Erect steel girders.
 - Construct formwork for concrete deck and curbs.
 - Close Columbus Boulevard. Pour concrete deck and curbs.
 - After concrete deck has attained a compressive strength of 21 MPa, close Columbus Boulevard and erect steel mast and cables.
 - Place pavers, railings and architectural features.



THE INFORMATION, INCLUDING ESTIMATED QUANTITIES OF WORK, SHOWN ON THESE SHEETS IS BASED ON LIMITED INVESTIGATIONS AND IS IN NO WAY WARRANTED TO INDICATE THE TRUE CONDITIONS OR ACTUAL QUANTITIES OR DISTRIBUTION OF QUANTITIES OF WORK WHICH WILL BE REQUIRED.

REVISIONS	
NO.	DESCRIPTION

CITY OF HARTFORD			
PEDESTRIAN BRIDGE			
OVER			
COLUMBUS BOULEVARD			
GENERAL PLAN 1			
ENGINEER: MACCHI ENGINEERS, LLC			
DESIGNER: DC		DRAFTER: DC	
CHECKER: JB		APPROVED: <i>James Burkhman</i>	
DATE: 9-17-99		DATE: 9-17-99	
STRUCTURE NO.		BRIDGE LOG NO.	
1B of 28B			