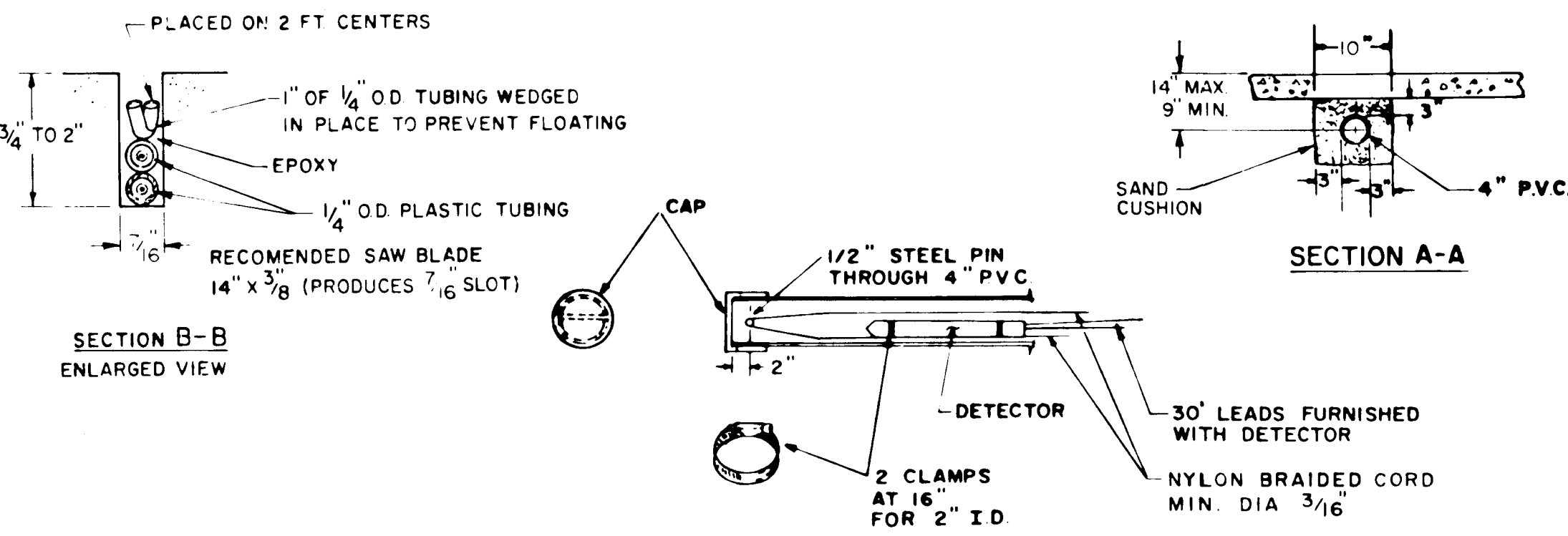
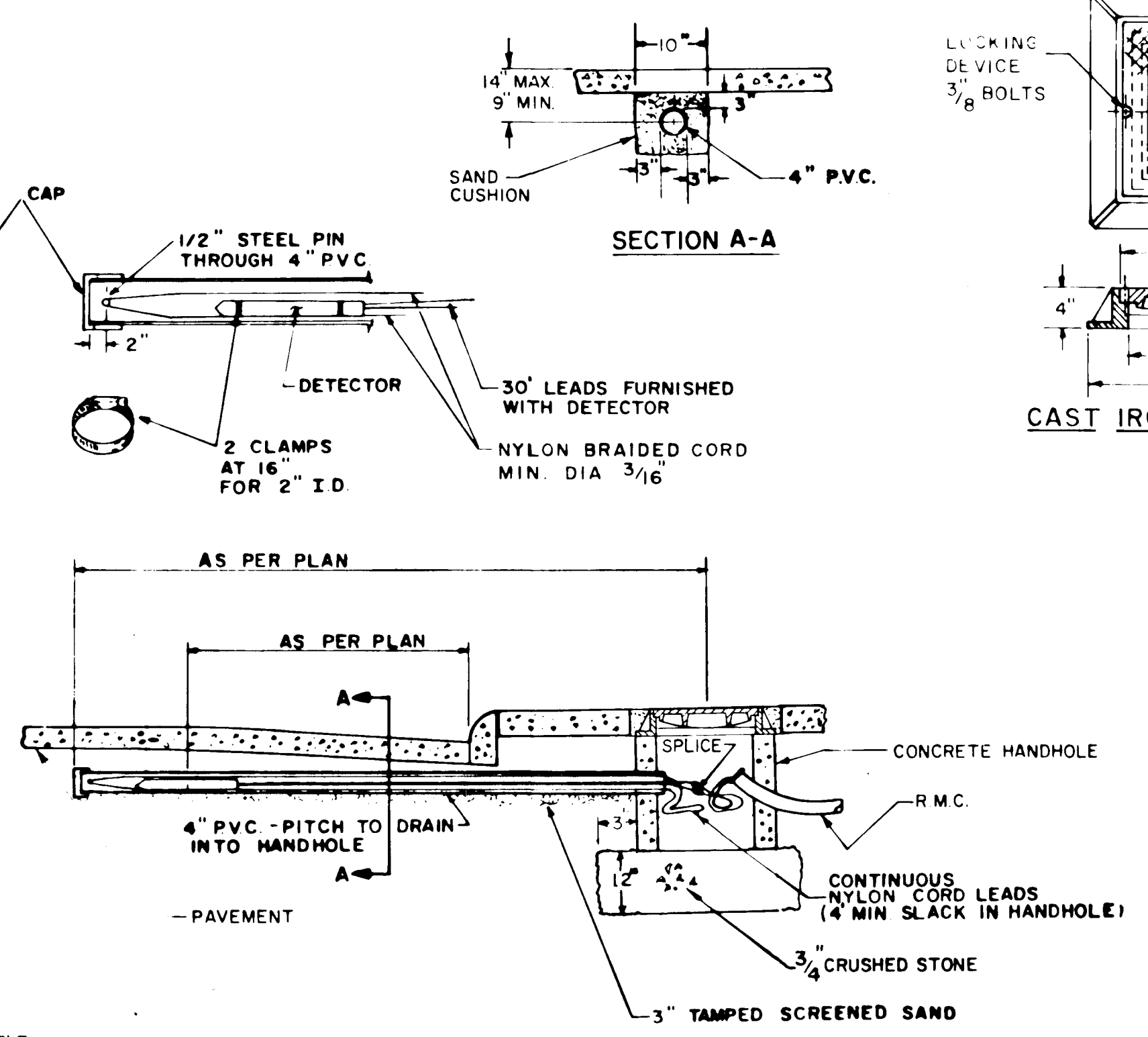


LOOP DETECTOR INSTALLATION

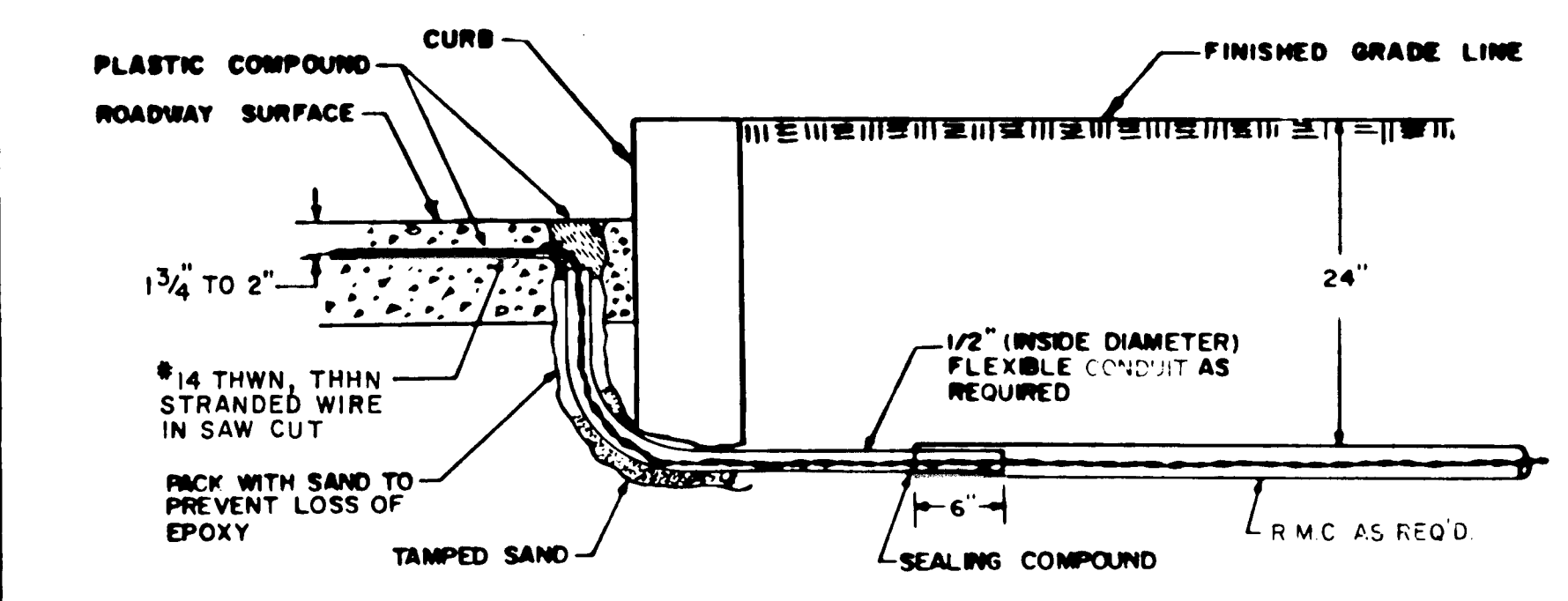
NOTE: LOOP DETECTOR SHALL BE INSTALLED IN PRE-MIXED OR BINDER COURSE, WHEN NEW PAVEMENT IS BEING PROVIDED.



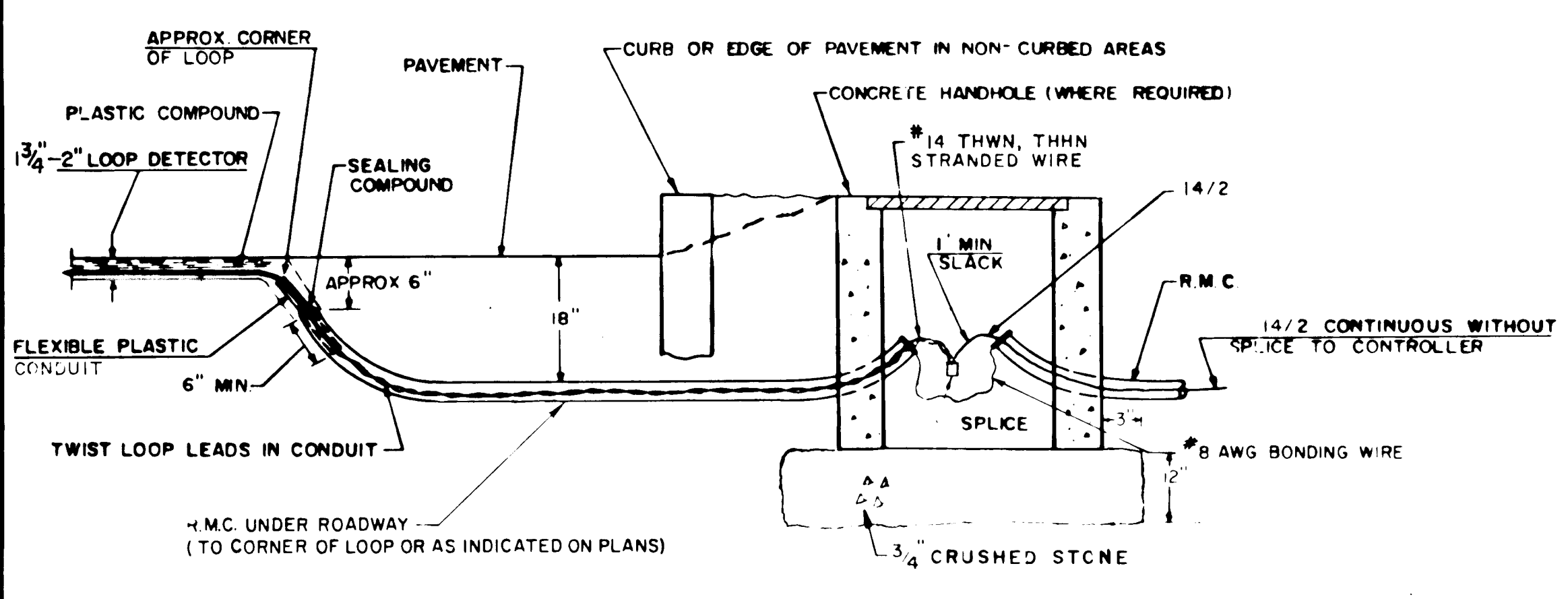
JUNCTION BOX SPLICES



MAGNETIC DETECTOR



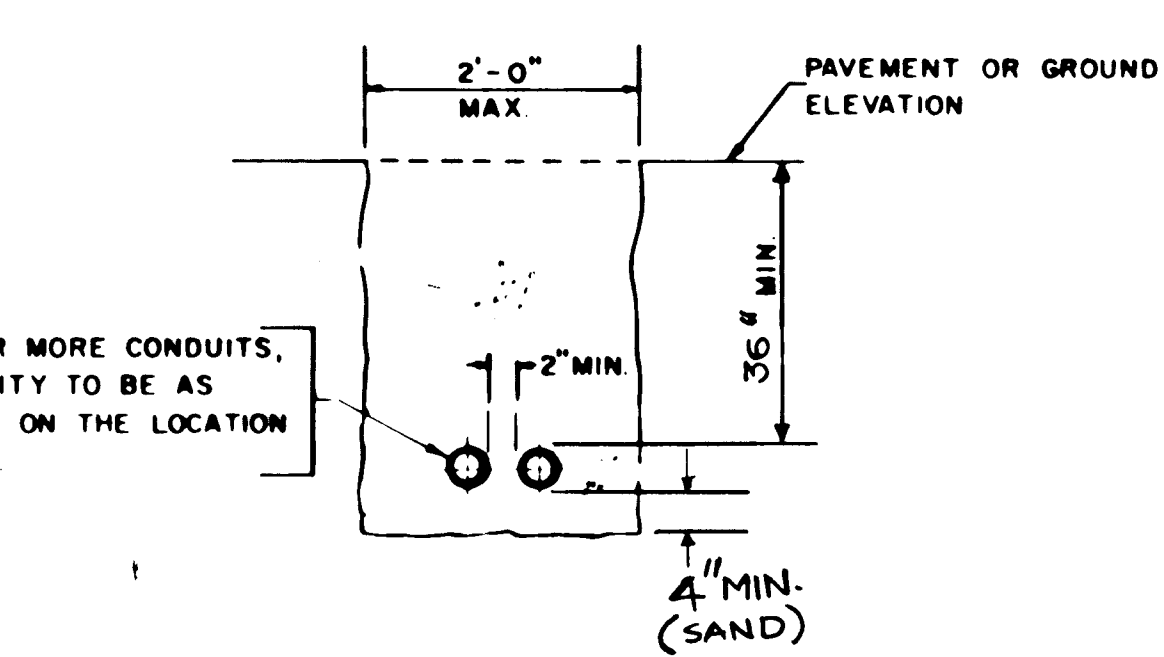
LOOP DETECTOR SAW CUT AND LEAD-IN
(TO BE USED IN EXISTING PAVEMENTS)



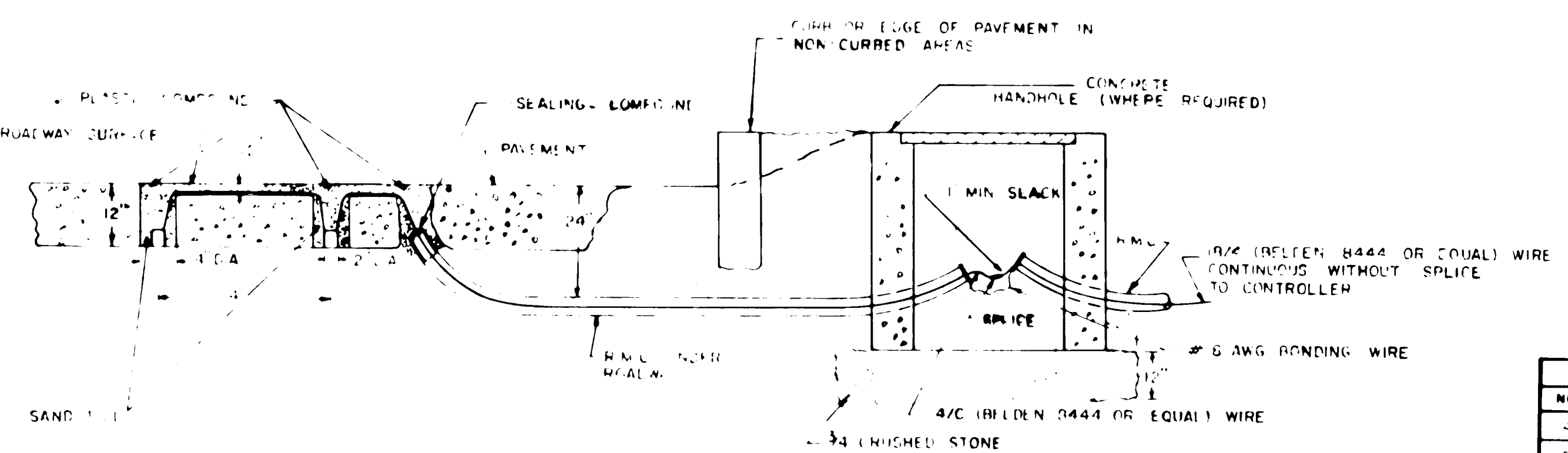
TYPICAL ELEVATION VIEW

LOOP DETECTOR SAW CUT AND LEAD-IN

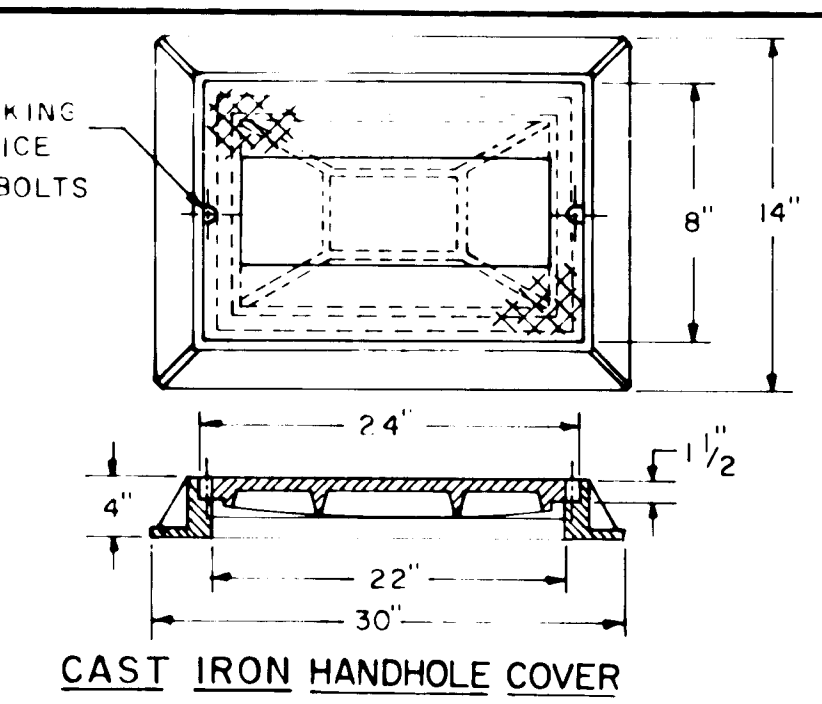
(TO BE USED IN NEW ROADWAYS OR EXISTING PAVEMENTS WHICH ARE TO BE RESURFACED)



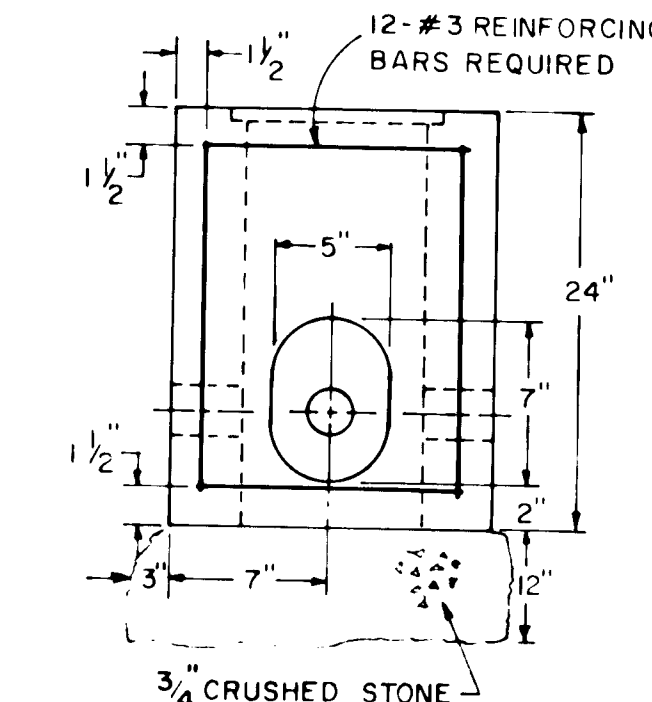
R.M.C. IN TRENCH OR UNDER ROADWAY



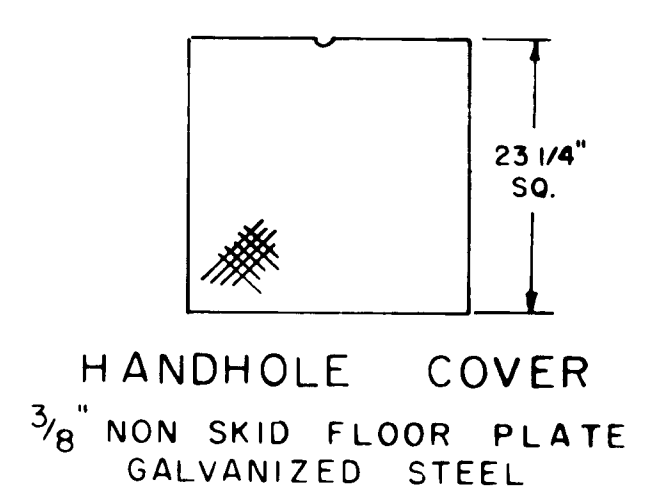
MAGNETOMETER DETECTOR



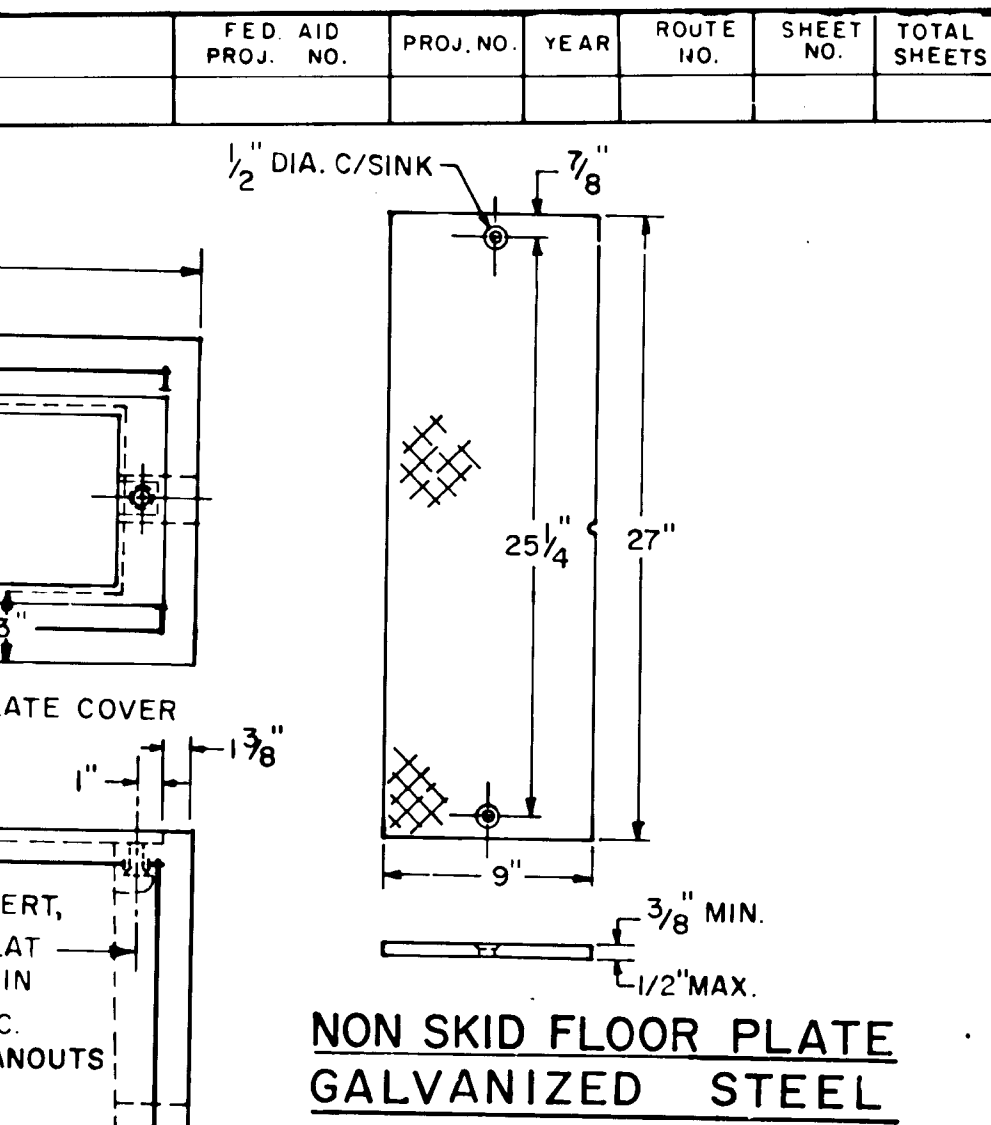
CAST IRON HANDHOLE COVER



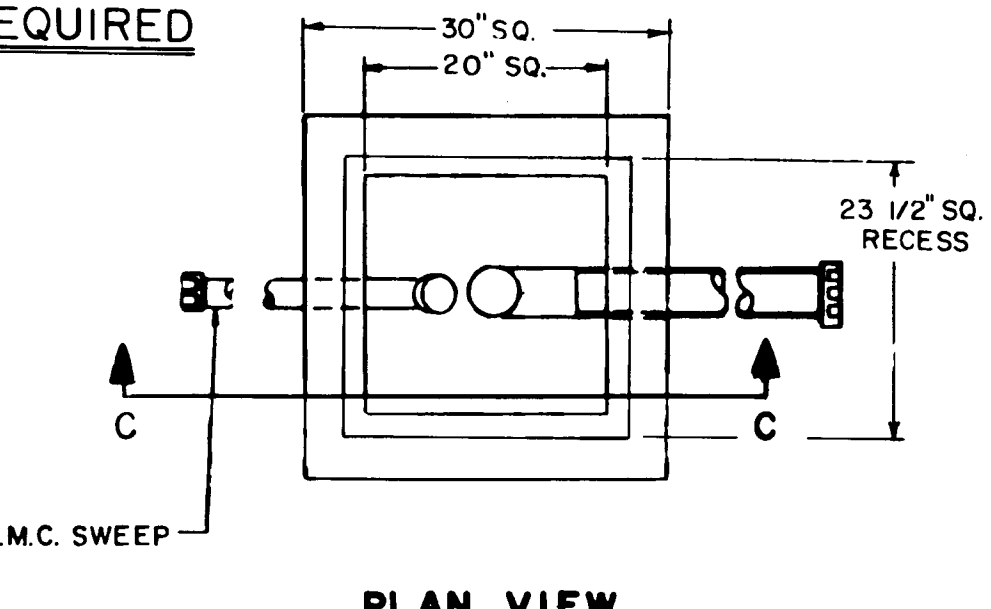
CONCRETE HANDHOLE TYPE II
CLASS "C" CONCRETE REQUIRED



HANDHOLE COVER
3/8" NON SKID FLOOR PLATE GALVANIZED STEEL

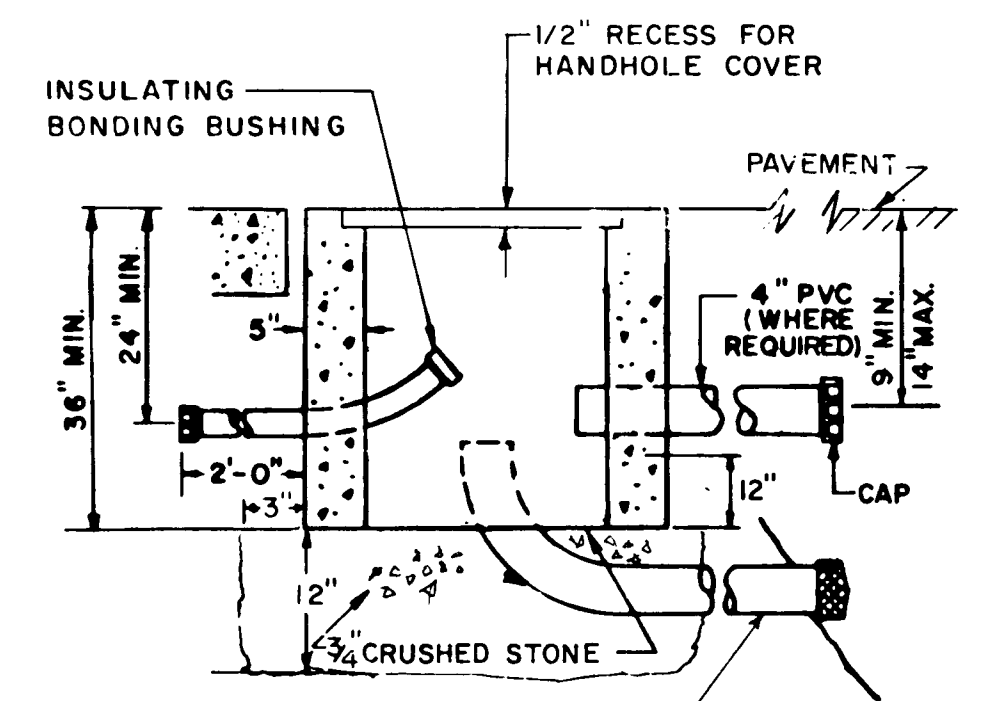


NON SKID FLOOR PLATE
GALVANIZED STEEL



PLAN VIEW

- HANDHOLE NOTES:
1. UNUSED OPENINGS OF HANDHOLE TO BE BLOCKED ON THE OUTSIDE WITH PLYWOOD.
 2. GROUT AROUND ALL CONDUITS



CONCRETE HANDHOLE TYPE I
CLASS "A" CONCRETE REQUIRED

CONNECTICUT
DEPARTMENT OF TRANSPORTATION
BUREAU OF HIGHWAYS
DIVISION OF TRAFFIC

TYPICAL INSTALLATION DETAILS
DETECTORS
RIGID METAL CONDUIT & HANDHOLES

SHEET 3.2

REVISIONS		
NO.	DATE	DESCRIPTION
4	8-81	ADDED JUNC. BOX SPLICES & LOOP DETECTOR INSTALL.
5	1-82	REVISED JUNC. BOX SPLICES
6	1-83	REVISED JUNC. BOX SPLICES & LOOP DETECTOR INSTALL.
7	9-83	REMOVE PLASTIC HANDHOLE & DRAIN FROM TYPE II. ADD 3/4\"/>
8	5-84	NO HANDHOLE COVER. REVISED TO MEET TYPE I.
9	10-87	ADD HANDHOLE UNDER CONCRETE TYPE II HANDHOLE.

SUBMITTED BY: _____ DATE: _____
APPROVED: _____ DATE: _____
SCALE: NONE