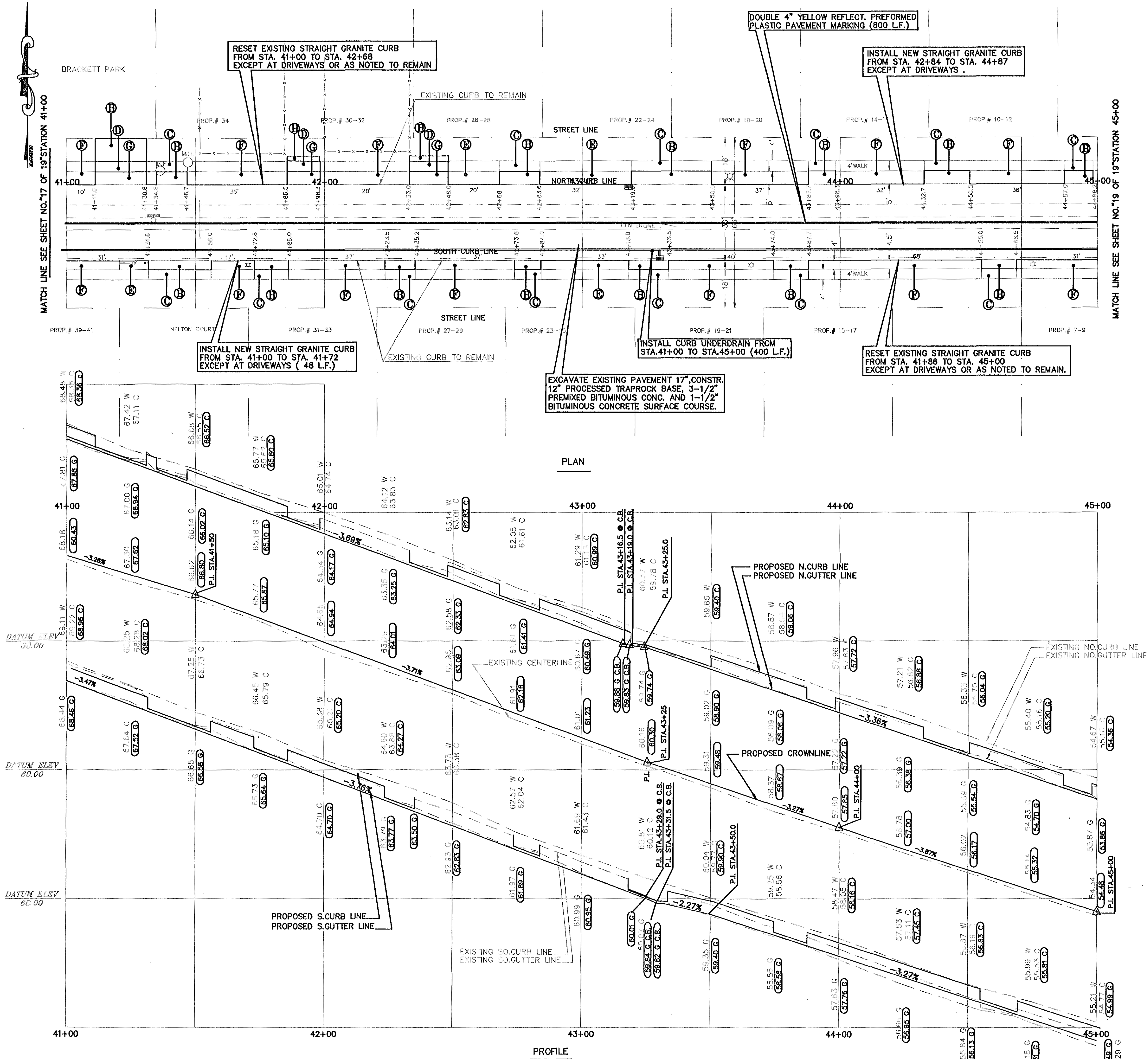


F.H.W.A. REGION NO.	STATE	TOWN	FED. AID PROJECT NO.	PROJ. NO.	YEAR	ROUTE NO.	SHEET NO.	TOTAL SHEETS
1	CONN.	HARTFORD	STPH-7063(4)	63-517	1994		18	19



CONSTRUCTION NOTES

- 1 (A) CONSTRUCT BIT. CONC. DRIVEWAY RAMP  
(B) SAWCUT BETWEEN EXISTING RAMPED SECTION AND SIDEWALK, AND CONSTRUCT NEW 8" REINFORCED CONC. DRIVEWAY RAMP  
(C) EXISTING DRIVEWAY RAMP TO REMAIN  
(D) CONSTRUCT 8" REINFORCED CONC. SIDEWALK  
(E) CONSTRUCT 2" BIT. CONC. SURFACE ON NEW FOUNDATION, EXCEPT AT DRIVEWAYS AND RAMPS  
(F) SEEDING AND MULCHING  
(G) CONSTRUCT 8" REINFORCED CONC. DRIVEWAY RAMP  
(H) CONSTRUCT BIT. CONC. DRIVEWAY  
(I) RELAY FLAGSTONE WALK  
(J) CUT BIT. CONC. SURFACE  
(K) RELAY BRICK WALK  
(L) CONSTRUCT 5" CONC SIDEWALK EXCEPT AT DRIVEWAYS
- 2 ELEVATIONS ARE BASED ON METROPOLITAN DISTRICT COMMISSION (MDC) DATUM
- 3 RIM OR FRAME ELEVATIONS OF ALL UTILITY GATE BOXES, HANDHOLES, MANHOLES AND CATCH BASINS ARE TO BE ADJUSTED AS REQUIRED TO MATCH PROPOSED FINISHED PAVED SURFACES
- 4 CALL BEFORE YOU DIG - THE CONTRACTOR IS HEREBY REMINDED THAT PURSUANT TO PUBLIC ACT 87-71 REQUIRES NOTIFICATION TO UTILITY COMPANIES OF PENDING EXCAVATION AT OR NEAR THE LOCATION OF PUBLIC UTILITIES. THE CONTRACTOR SHALL CALL THIS NUMBER 1-800-922-4455 AT LEAST 48 HOURS, EXCLUDING SATURDAYS, SUNDAYS AND HOLIDAYS, BUT NOT MORE THAN THIRTY DAYS (ONE MONTH) PRIOR TO EXCAVATION
- 5 BENCH MARK SO.FLANGE BOLT @ HYDRANT NORTH SIDE OF WESTLAND STATION 43+54 ELEVATION=62.44'

REVISED ON MAY 1994

CITY OF HARTFORD, CONNECTICUT  
DEPARTMENT OF PUBLIC WORKS  
ENGINEERING SERVICES

PLAN AND PROFILE  
WESTLAND STREET

(FROM STATION 41+00 TO STATION 45+00)

SUBMITTED PROJECT ENGINEER <i>[Signature]</i>	RECOMMENDED MANAGER <i>[Signature]</i>	APPROVED CITY ENGINEER <i>[Signature]</i>
DRAWN 1"=20' CHECKED 1"=20'	SCALE: HORIZ. 1"=80' VERT. 1"= 8'	DAYBOOK NO. 011896 JUN 1994 FILE NAME WESTLAND-4.DWG
SHEET 18 OF 10		