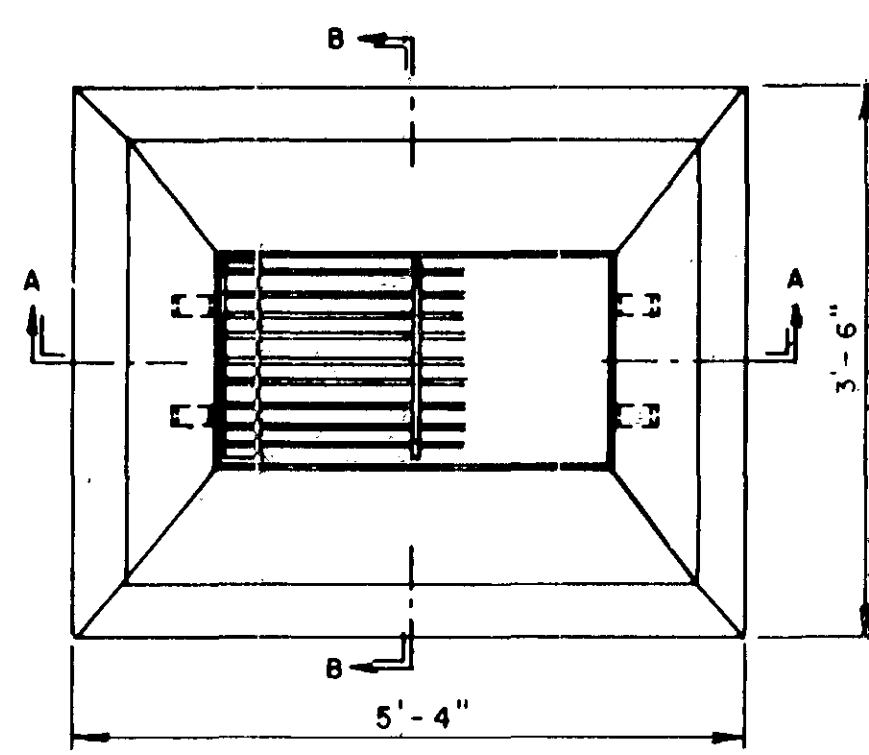
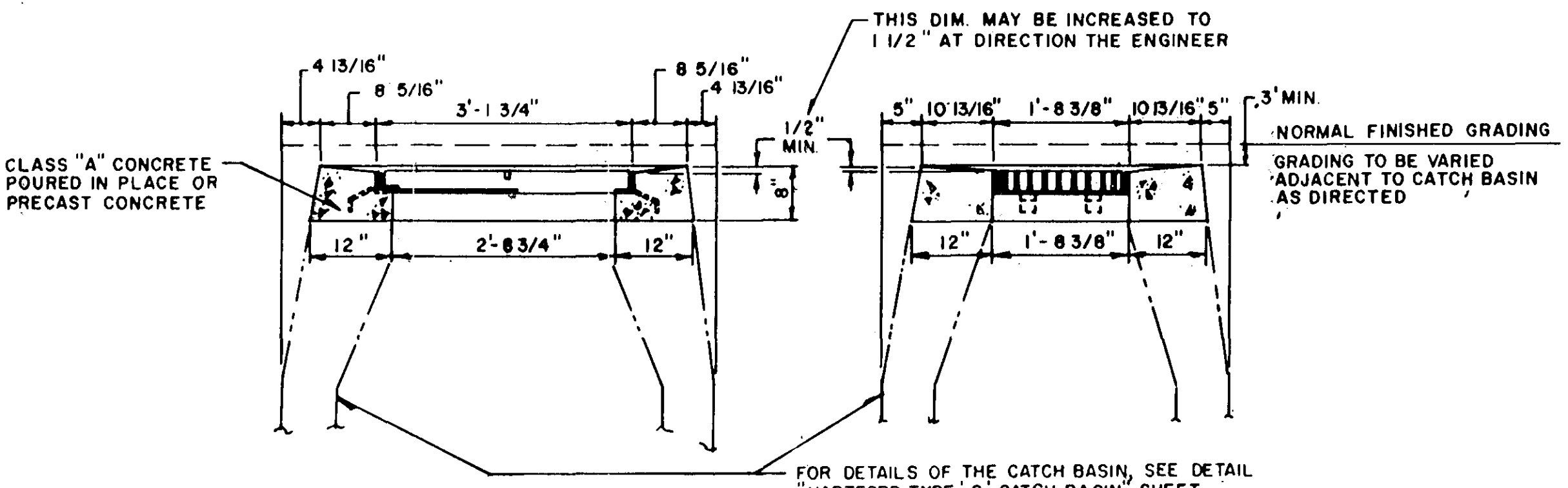


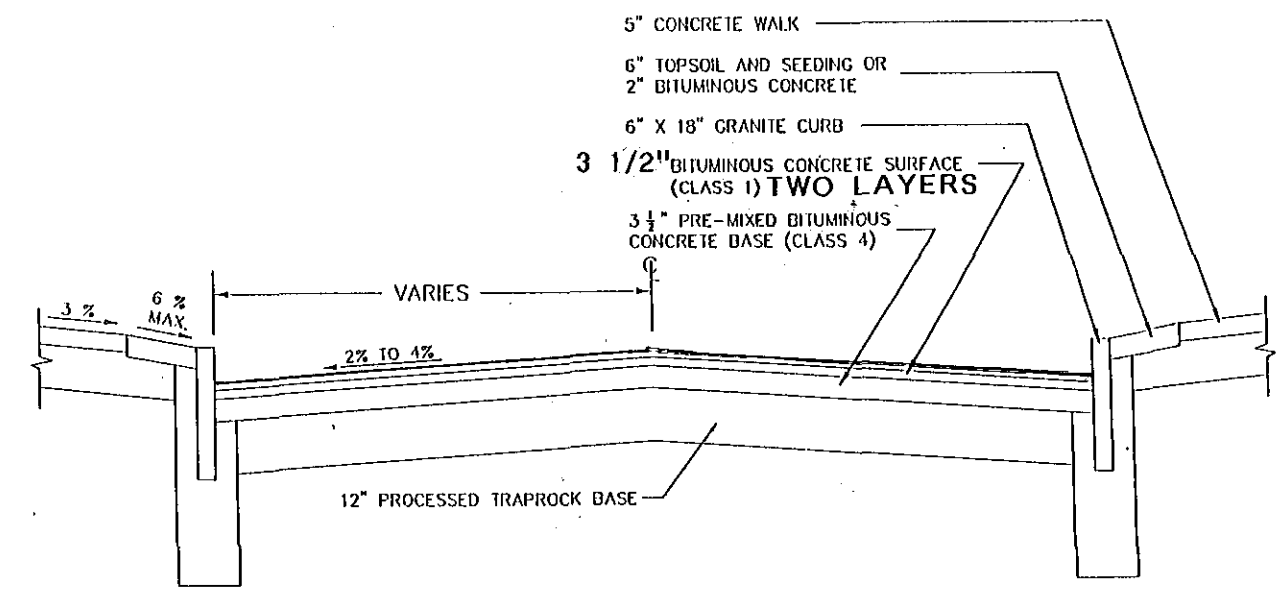
CITY MERESTONE



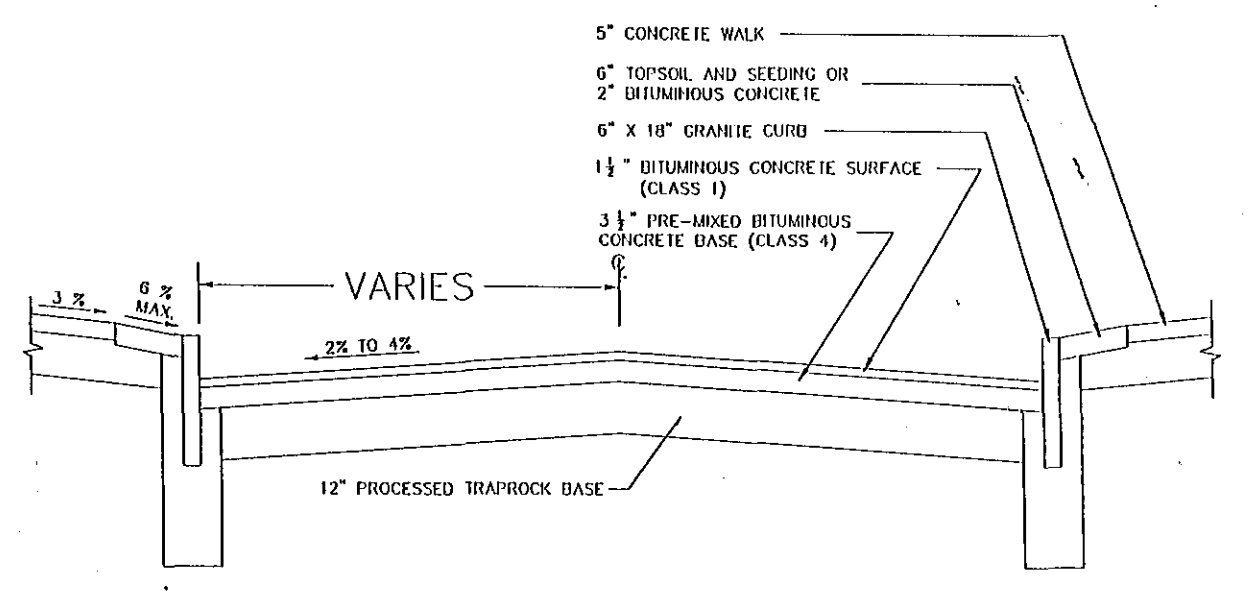
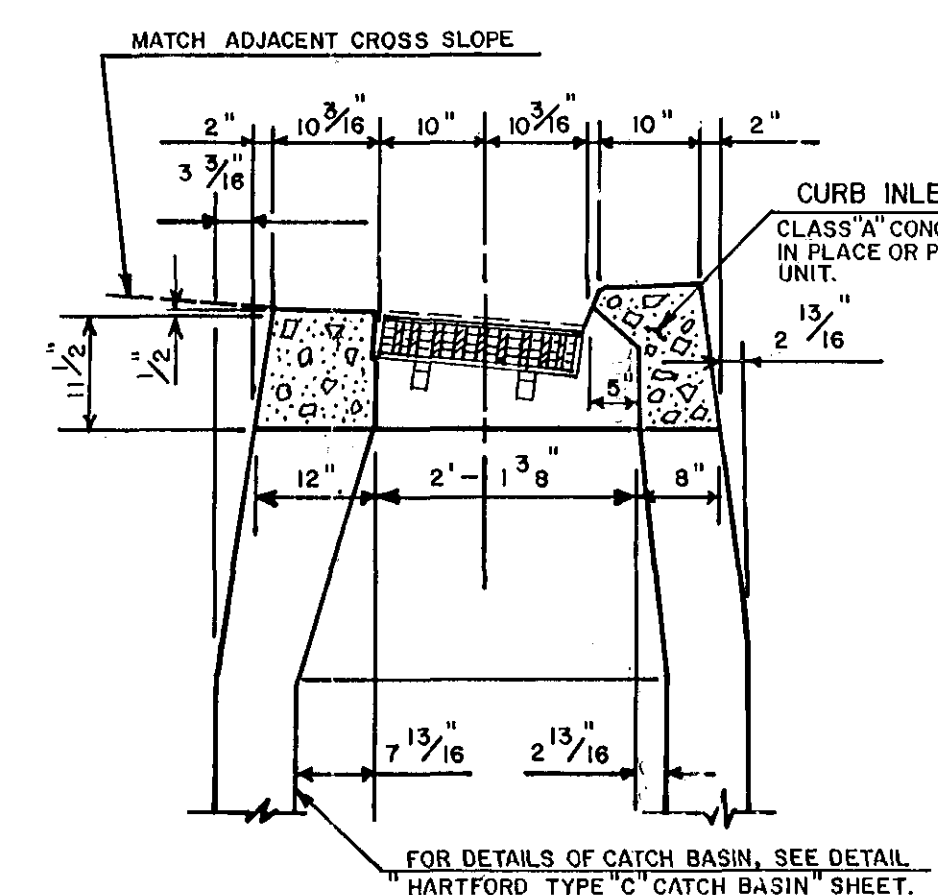
HARTFORD TYPE 'C' CATCH BASIN INLET



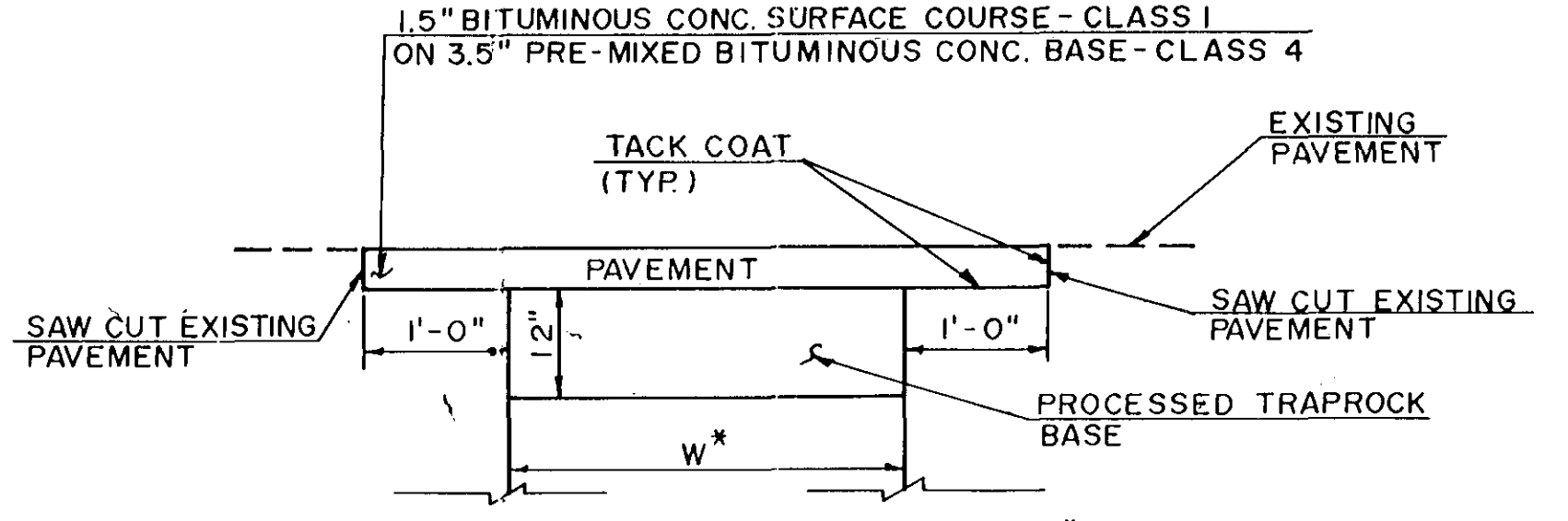
TYPE "C" CATCH BASIN



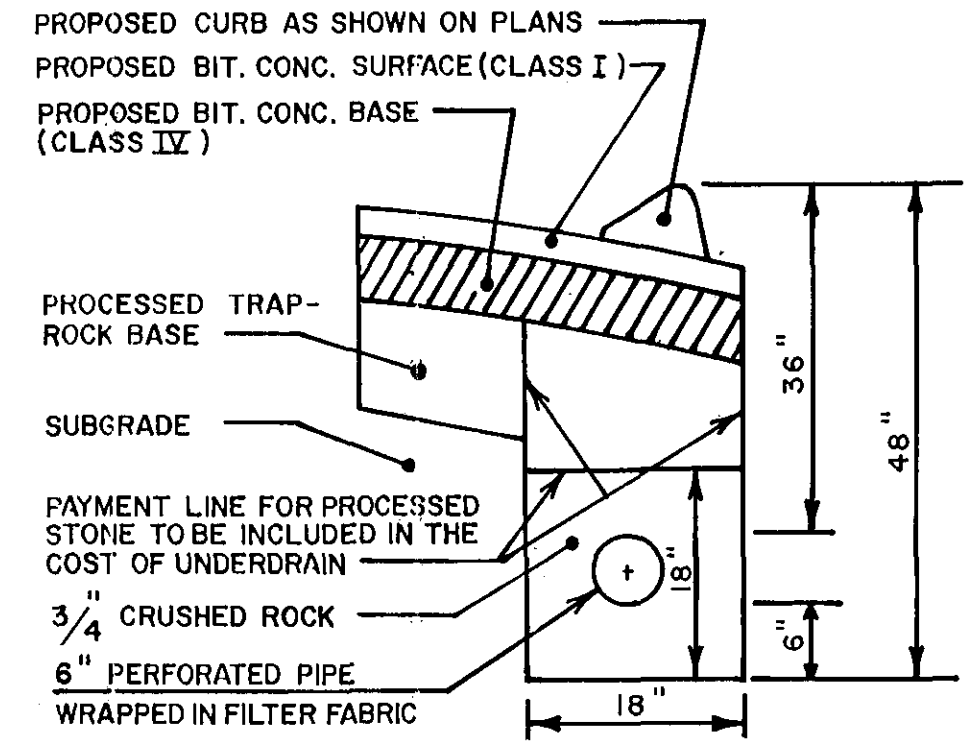
TYPICAL FLEXIBLE-BASE WITH GRANITE CURB SECTION



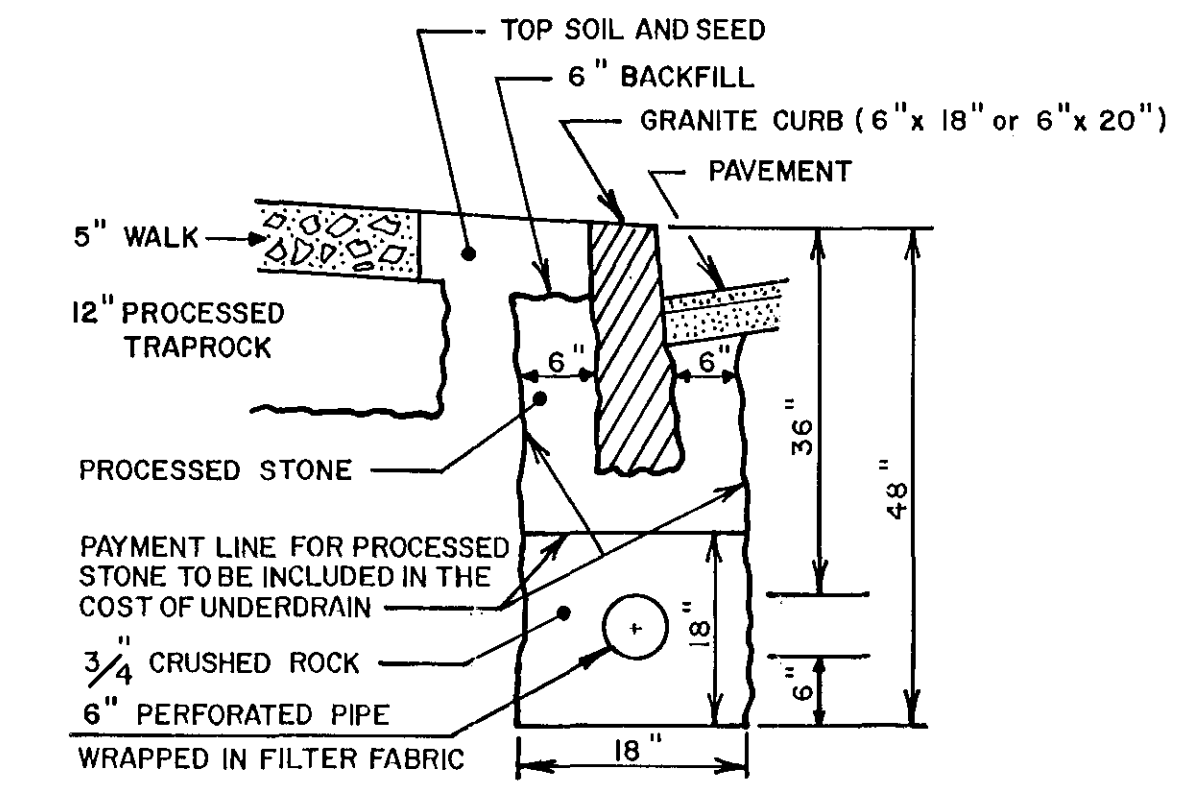
TYPICAL FLEXIBLE-BASE WITH GRANITE CURB SECTION



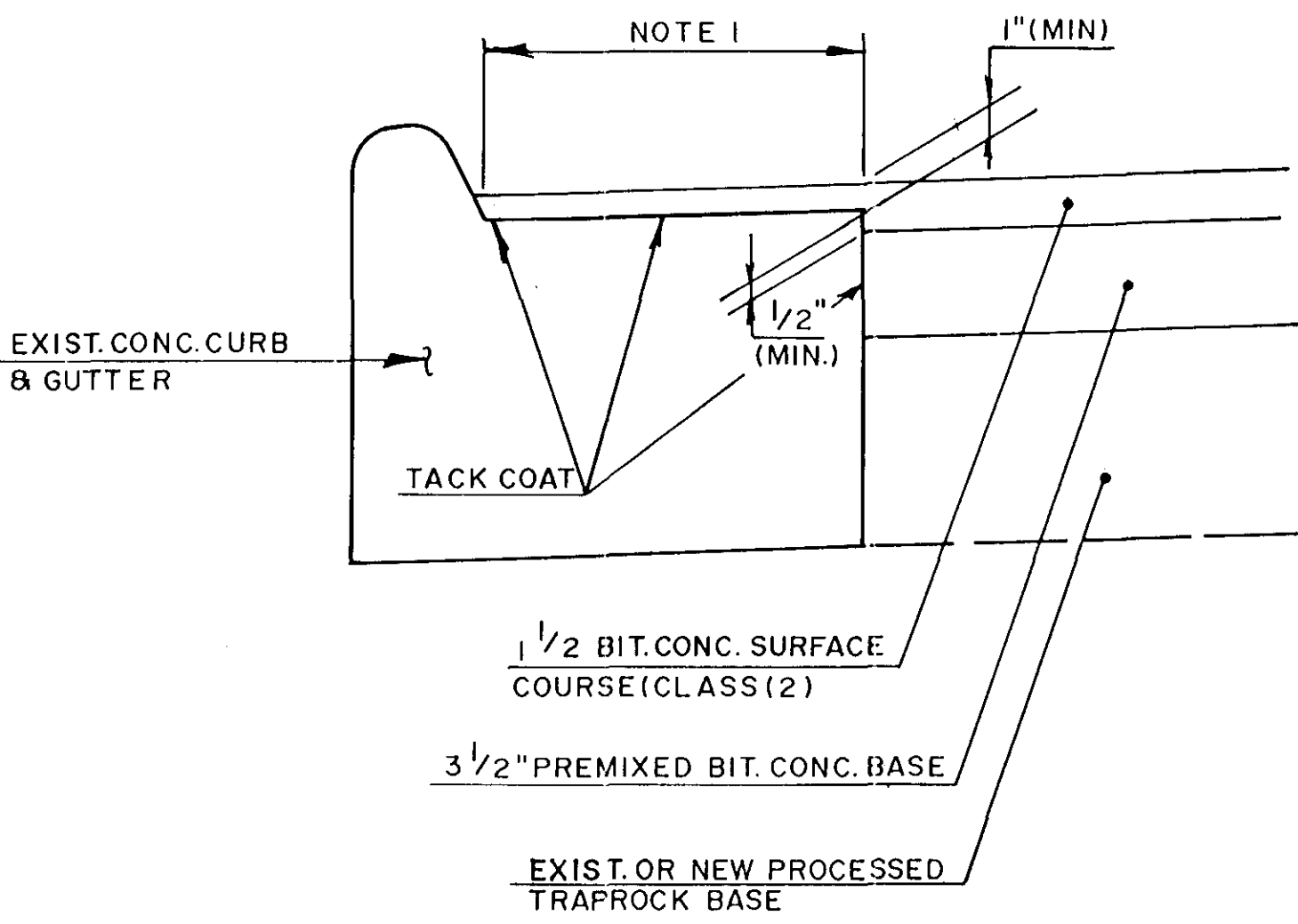
TYPICAL TREATMENT OF PERMANENT PAVEMENT REPLACEMENT



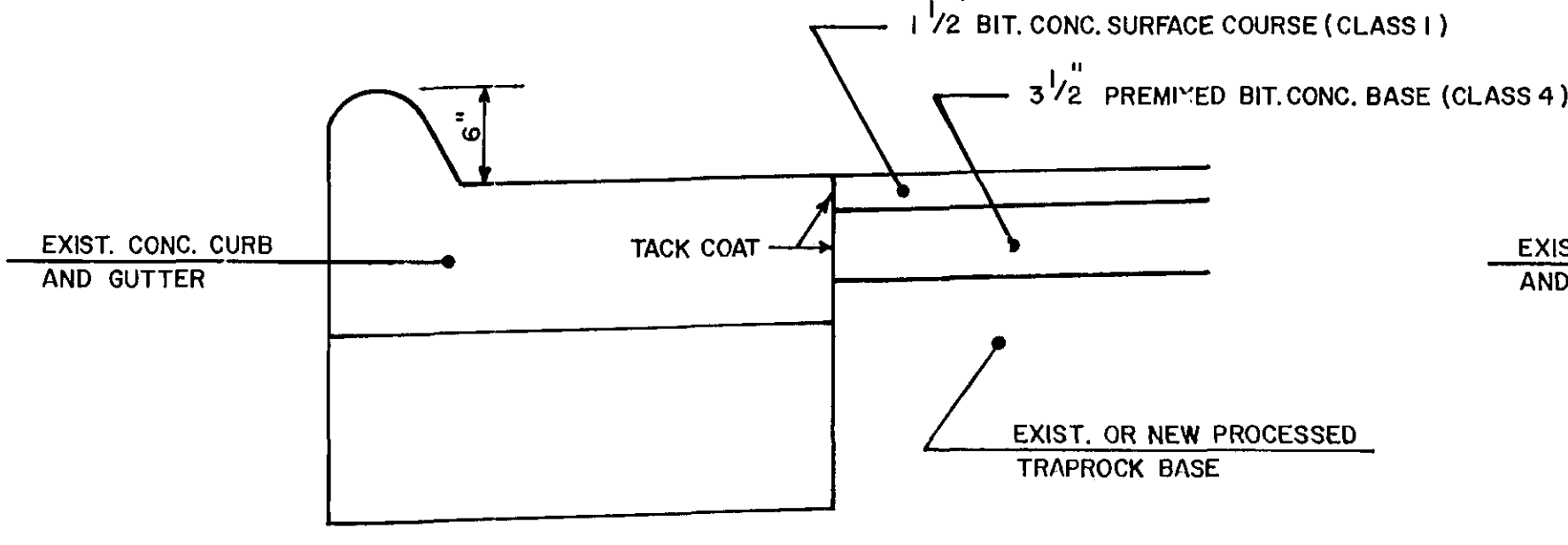
CURB UNDERDRAIN FOR BIT. CURB



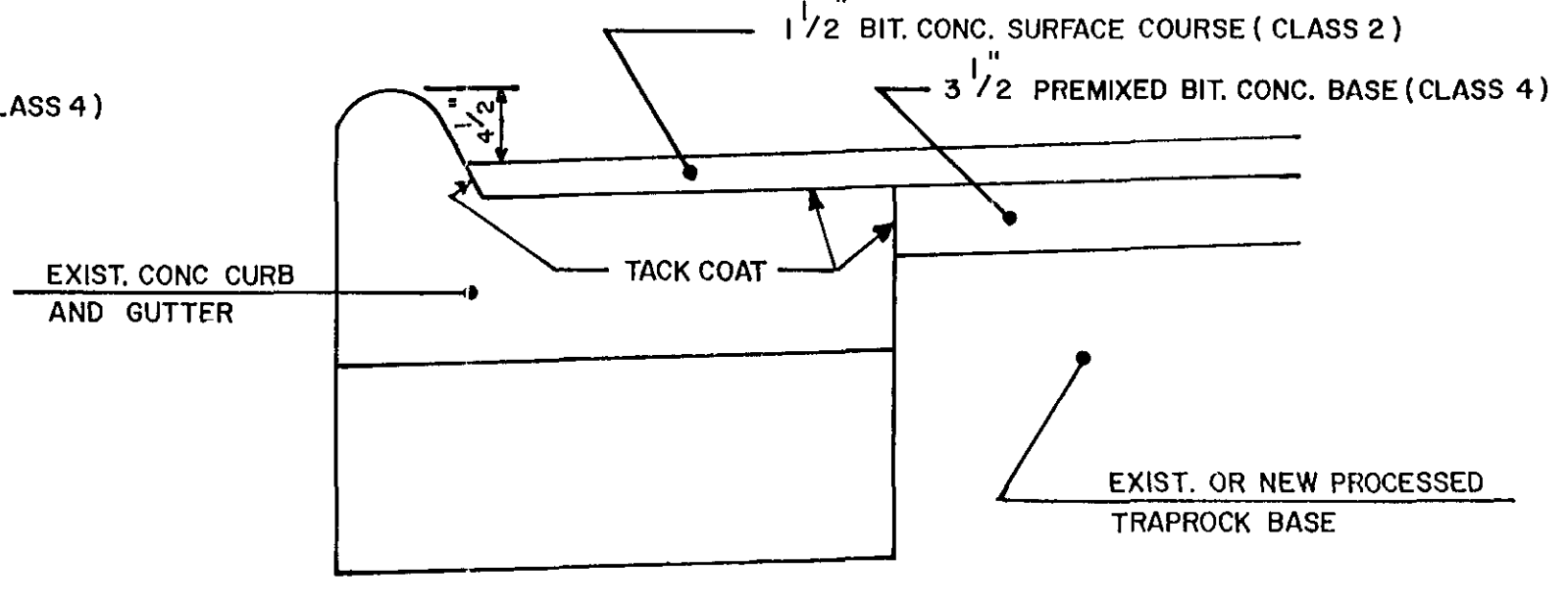
CURB UNDERDRAIN FOR GRANITE CURB



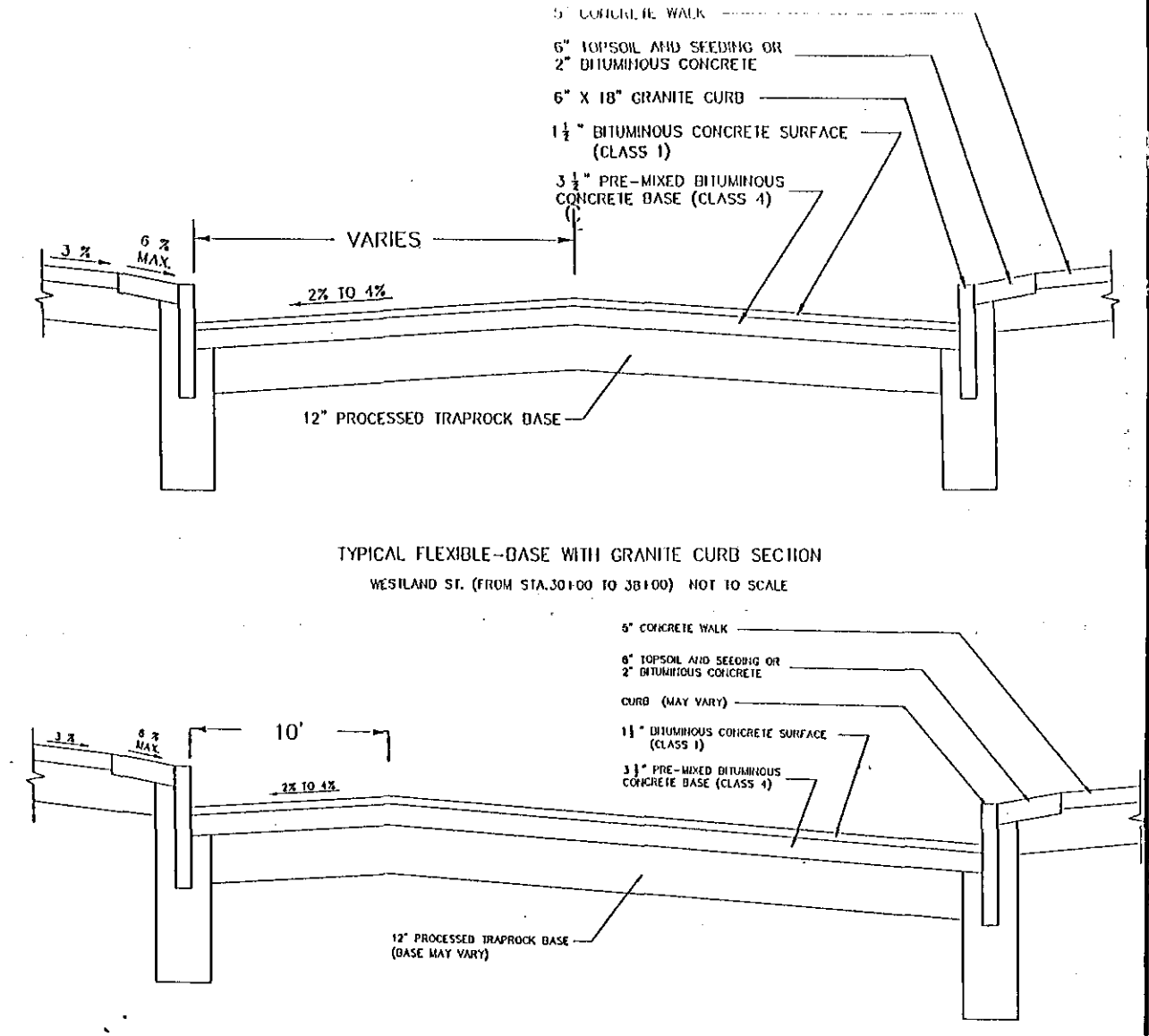
PAVING AT CONCRETE CURB & GUTTER



PAVING AT CONCRETE CURB AND GUTTER WITH 6" REVEAL



PAVING AT CONCRETE CURB AND GUTTER WITH 4 1/2" REVEAL



TYPICAL OFF-SET CROWN LINE SECTION

- CONSTRUCTION NOTES
1. WHEN EXCAVATING CLOSE TO TREES, USE ONLY HAND TOOLS. CARE SHALL BE TAKEN TO ENSURE THAT TREE ROOTS ARE NOT DAMAGED IN ANY WAY THE INSPECTOR SHALL BE NOTIFIED IMMEDIATELY WHENEVER TREE ROOTS ARE ENCOUNTERED. FURTHER EXCAVATING AT THAT LOCATION SHALL BE AS DIRECTED BY THE INSPECTOR.
 2. CONTRACTOR SHALL INFORM UTILITY COMPANY OF REQUIRED POLE RELOCATION AND COORDINATE WORK WITH UTILITY COMPANY.
 3. TOP OF CURB SHALL BE 6" ABOVE GUTTER GRADE UNLESS OTHERWISE NOTED.

CITY OF HARTFORD, CONNECTICUT DEPARTMENT OF PUBLIC WORKS BUREAU OF ENGINEERING SERVICES			
STANDARD DETAILS SHEET II			
SUBMITTED <i>[Signature]</i>	RECOMMENDED <i>[Signature]</i>	APPROVED <i>[Signature]</i>	
DRAWN LAL	SCALE NOT TO SCALE	DAYBOOK NO. DATE	