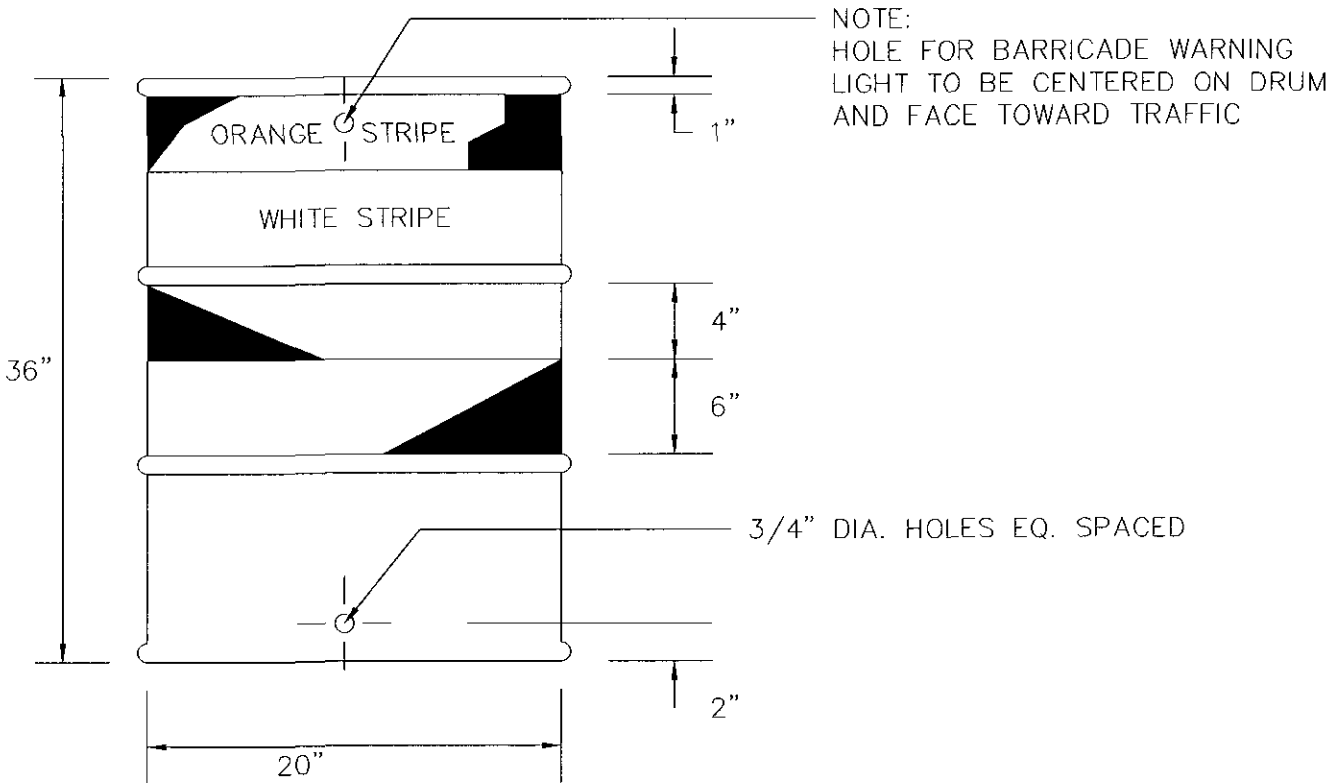
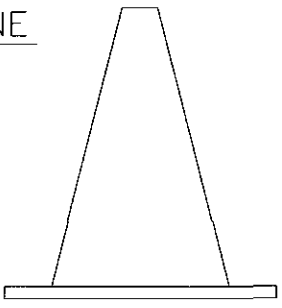


TRAFFIC DRUM



1. TRAFFIC DRUMS SHALL BE CONSTRUCTED OF PLASTIC.
2. TRAFFIC DRUMS SHALL BE DESIGNED IN ACCORDANCE WITH THE SPECIFICATIONS.
3. THE ENGINEER RESERVES THE RIGHT TO REJECT ANY DRUM HE DEEMS NOT SUITABLE FOR THE PURPOSE INTENDED.
4. THE WHITE STRIPES SHALL BE REFLECTIVE SHEETING-ENCAPSULATED LENS.
5. REFLECTORIZED STRIPES SHOULD NOT BE PLACED OVER THE PROTRUDING CIRCUMFERENTIAL RIBS OF THE DRUM.
6. THOSE SECTIONS OF DRUM NOT COVERED WITH REFLECTORIZED STRIPES SHALL BE ORANGE IN COLOR.

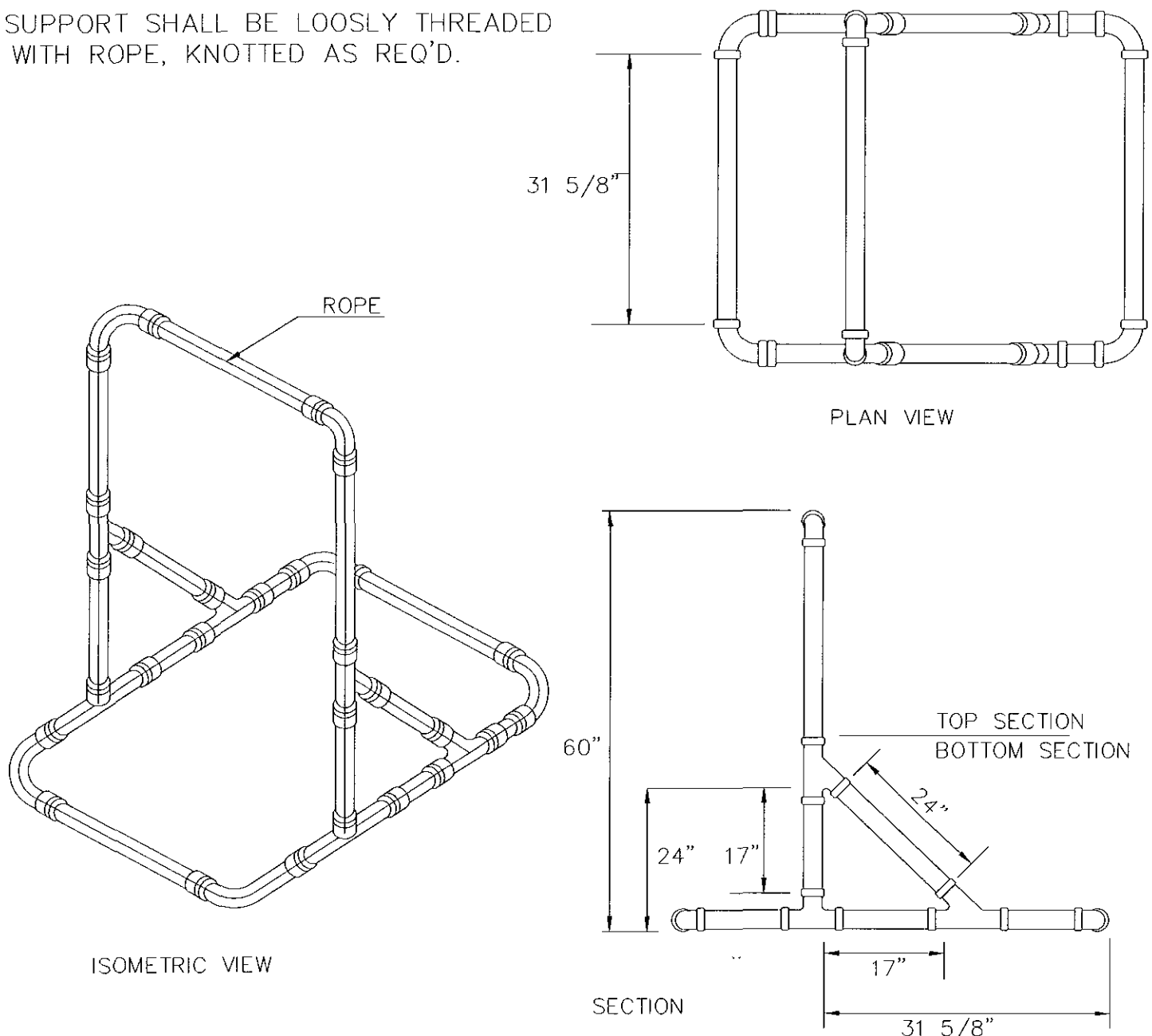
TRAFFIC CONE



NOTES:

1. TRAFFIC CONES SHALL BE DESIGNED IN ACCORDANCE WITH THE "MANUAL ON UNIFORM TRAFFIC CONTROL DEVICES, CHAPTER VI, SECTION 6C-3 CONE DESIGN".
2. CONES SHALL BE A MINIMUM OF 18" IN HEIGHT OR AS SPECIFIED. COLOR SHALL BE PREDOMINATELY FEDERAL ORANGE.
3. PLASTIC CONES ARE TO BE COLOR IMPREGNATED.
4. RUBBER CONES ARE TO BE REFLECTORIZED WITH INTERIOR RIBS FOR RIGIDITY.
5. CONE WALL THICKNESS MUST WITHSTAND IMPACT, WITHOUT DAMAGE TO EITHER CONE OR VEHICLE UPON IMPACT.
6. THE ENGINEER RESERVES THE RIGHT TO REJECT ANY CONE HE DEEMS NOT SUITABLE FOR THE PURPOSE INTENDED.

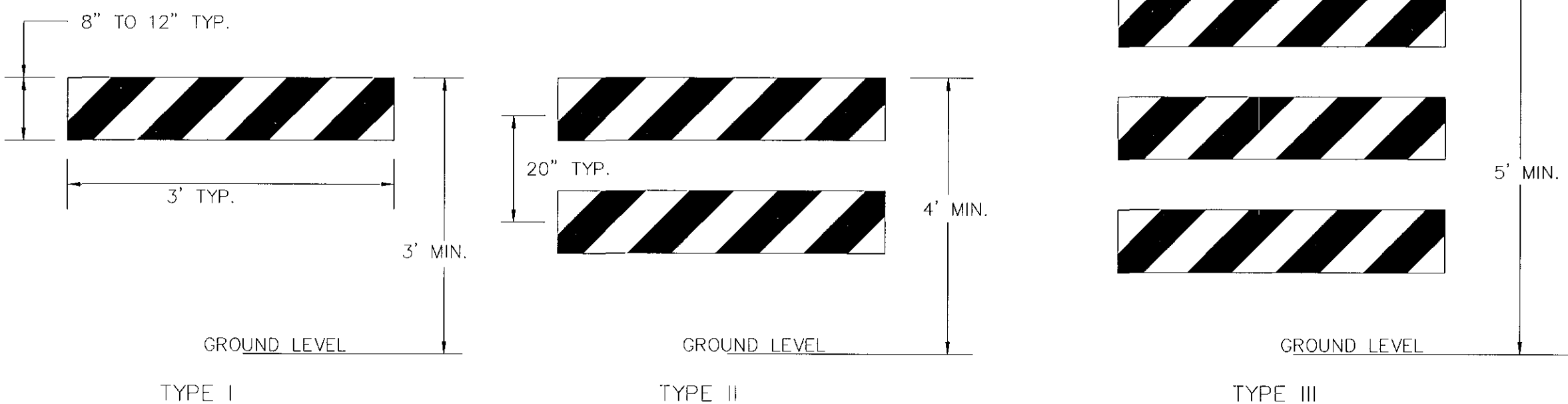
- NOTES:
1. DIMENSIONS ARE APPROXIMATE.
 2. BOTTOM SECTION MAY BE FILLED WITH SAND OR BALLAST.
 3. SUPPORT SHALL BE LOOSLY THREADED WITH ROPE, KNOTTED AS REQ'D.



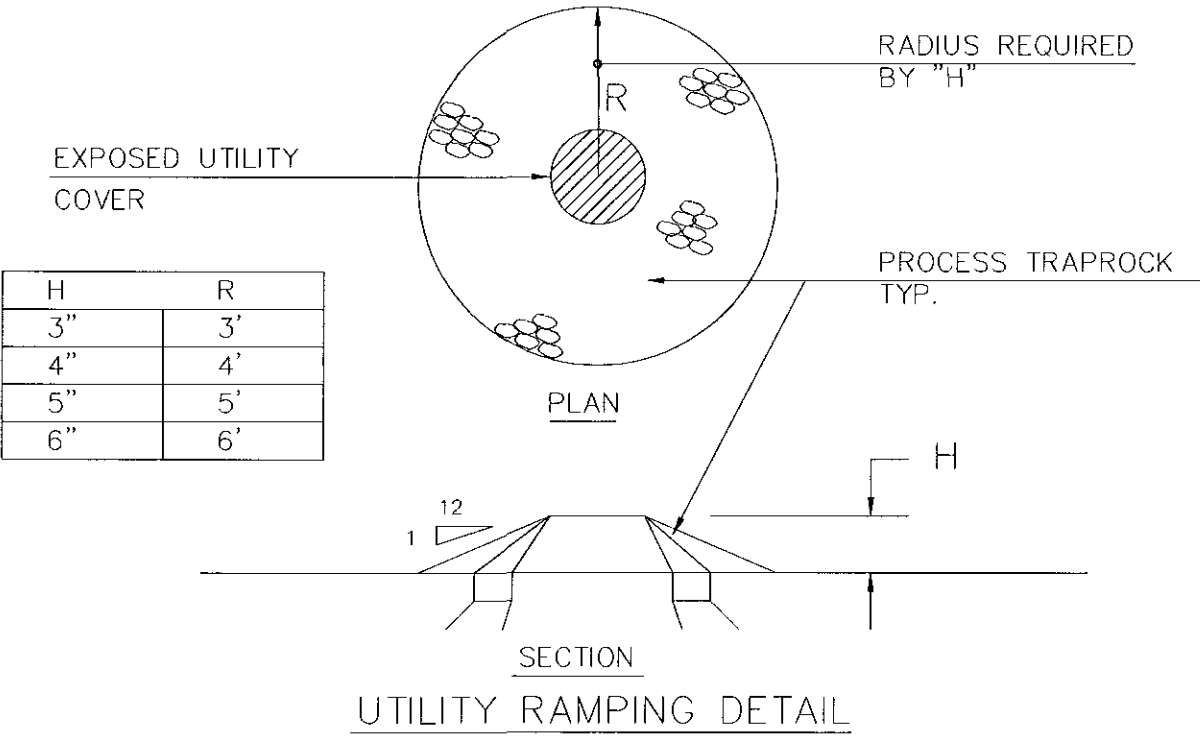
TYPICAL 3" OR 4" BARRICADE SUPPORT

CONSTRUCTION BARRICADES
NOT TO SCALE

- NOTES:
1. ALUMINUM BARRICADE FACE PANELS SHALL BE MOUNTED ON 3" OR 4" P.V.C. BARRICADE SUPPORT.
 2. MARKINGS FOR BARRICADE FACE PANELS SHALL ALTERNATE ORANGE AND WHITE STRIPES SLOPING DOWNWARD IN THE DIRECTION TRAFFIC IS TO PASS. 6" WIDE STRIPES AT 45° ANGLE SHALL BE USED.
 3. THE ENTIRE AREA OF ORANGE AND WHITE STRIPES SHALL BE REFLECTIVE SHEETING-ENCAPSULATED LENS. BARRICADE FACE PANELS AS NOTED SHALL BE REFLECTIVE ON BOTH SIDES. WHERE TRAFFIC PASSES ONLY IN ONE DIRECTION OF TRAVEL, ONLY THE SIDE FACING TRAFFIC SHALL BE REFLECTORIZED.
 4. ALUMINUM BARRICADE FACE PANELS SHALL HAVE ROUNDED CORNERS.
 5. THE ENGINEER RESERVES THE RIGHT TO REJECT ANY BARRICADE FACE PANEL WHICH HE DEEMS HAZARDOUS, AND NOT IN THE BEST INTEREST OF THE MOTORING PUBLIC, OR NOT SUITABLE FOR THE PURPOSE INTENDED.



ALUMINUM BARRICADE FACE PANELS

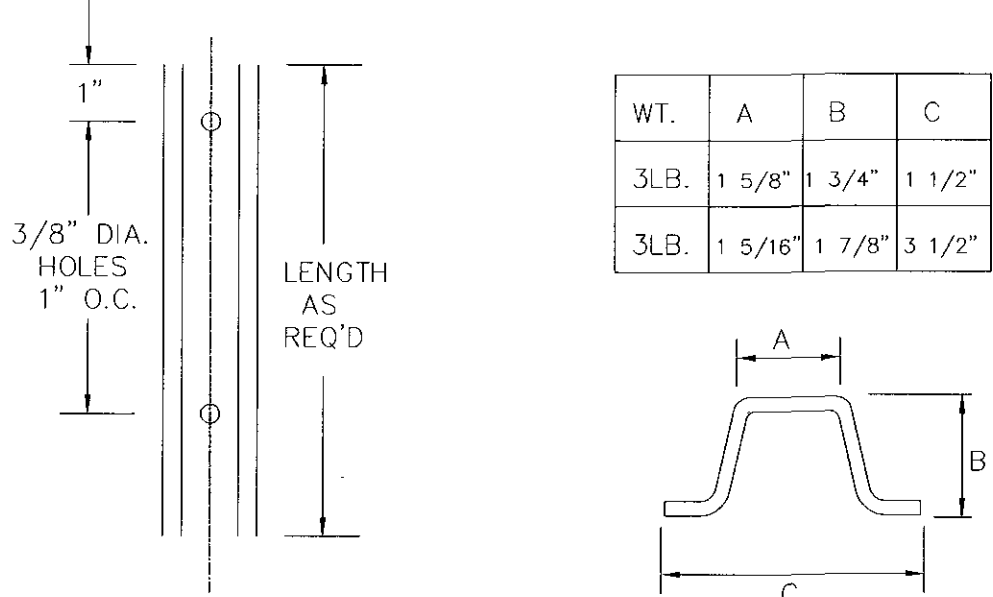


UTILITY RAMPING DETAIL

TRAFFIC SIGNS

(CA)			(RC)			(L)			(LT)			(LC)		
CA	SIZE (IN.)	SUPPORTS *	RC	SIZE (IN.)	SUPPORTS *	L	SIZE (IN.)	SUPPORTS *	LT	SIZE (IN.)	SUPPORTS *	LC	SIZE (IN.)	SUPPORTS *
CA	36 X 36	1	RC	36 X 36	1	L	48 X 18	2	LT	30 X 36	2	LC	30 X 18	
C	36 X 36	1				R	48 X 18	2						

TYPICAL SIGN - POST DETAILS



- * NOTES:
- STEEL FOR POST SHALL CONFORM TO MECHANICAL REQUIREMENTS OF ASTM A499-B1 GRADE 60 AND TO CHEMICAL REQUIREMENTS OF ASTM A1-76 CARBON STEEL TEE RAIL HAVING NORMAL WEIGHT OF 91 LB. OR GREATER PER LINEAL YARD.

CITY OF HARTFORD, CONNECTICUT
DEPARTMENT OF PUBLIC WORKS
TRANSPORTATION SERVICES BUREAU

TRAFFIC CONTROL AND PHASING

SUBMITTED	RECOMMENDED	APPROVED
PROJECT ENGINEER	MANAGER	CITY ENGINEER

1	10/13/95	NOTES REVISED	LAL
NO.	DATE	DESCRIPTION	BY

DAYBOOK NO. 011371	SHEET 9 OF 9
DATE SEPT. 15, 1995	
FILE NAME TRAPHIN.DWG	