

CONSTRUCTION SIGNS
ALL PHASES

LEGEND:

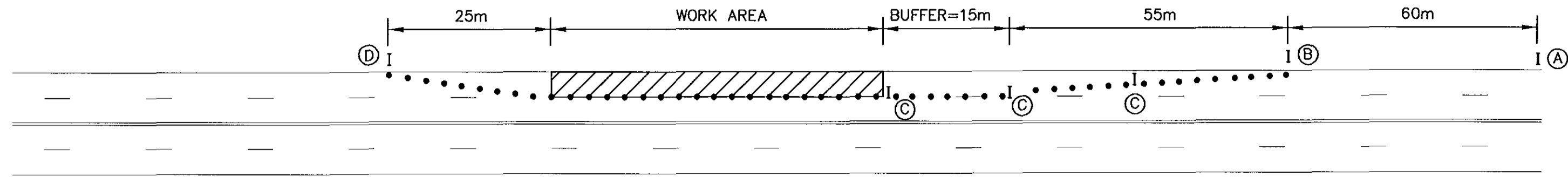
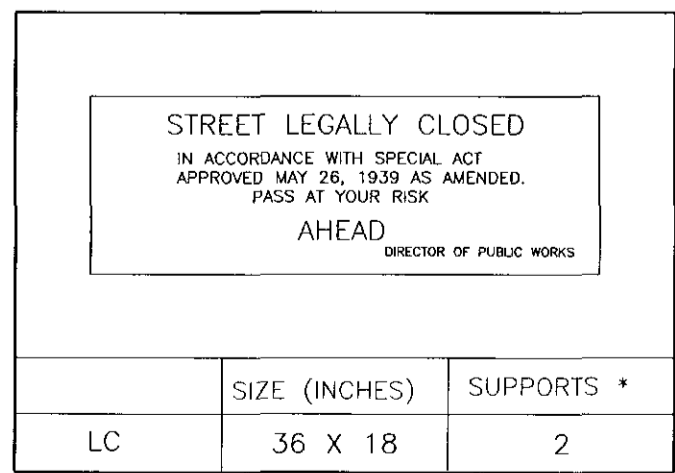
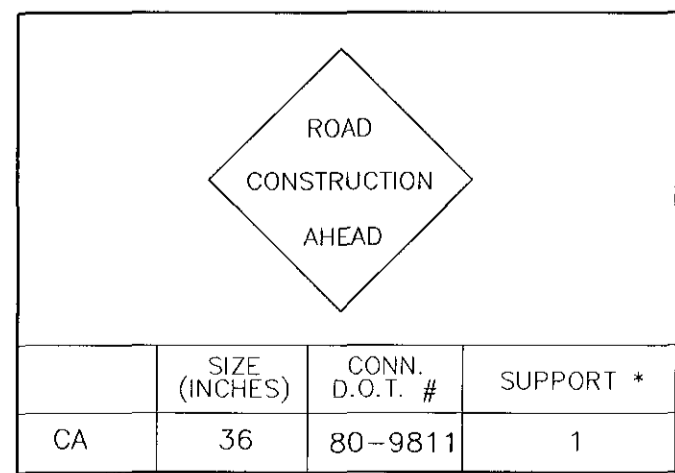
- WORK AREA
- TRAFFIC CONES / DRUMS
- TRAFFIC SIGNS

SIGN LEGEND:

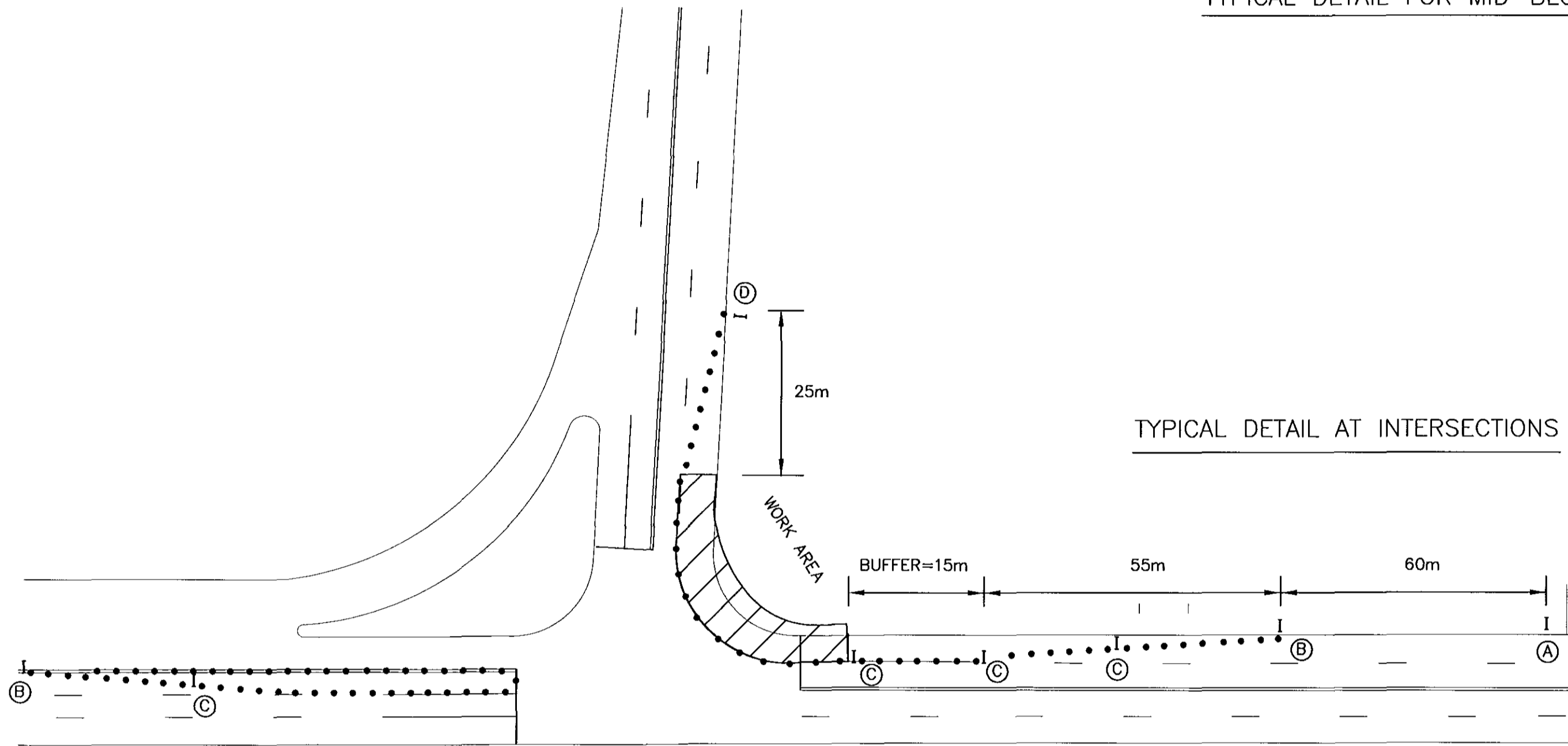
- (A) 80-9848 RIGHT LANE CLOSED AHEAD
- (B) 80-9917 MERGE LEFT
- (C) 80-9422(L) MOVE LEFT
- (D) 80-9704 END CONSTRUCTION
- (CA) 80-9811 ROAD CONSTRUCTION AHEAD
- (LC) 80-XXXX STREET LEGALLY CLOSED

NOTES:

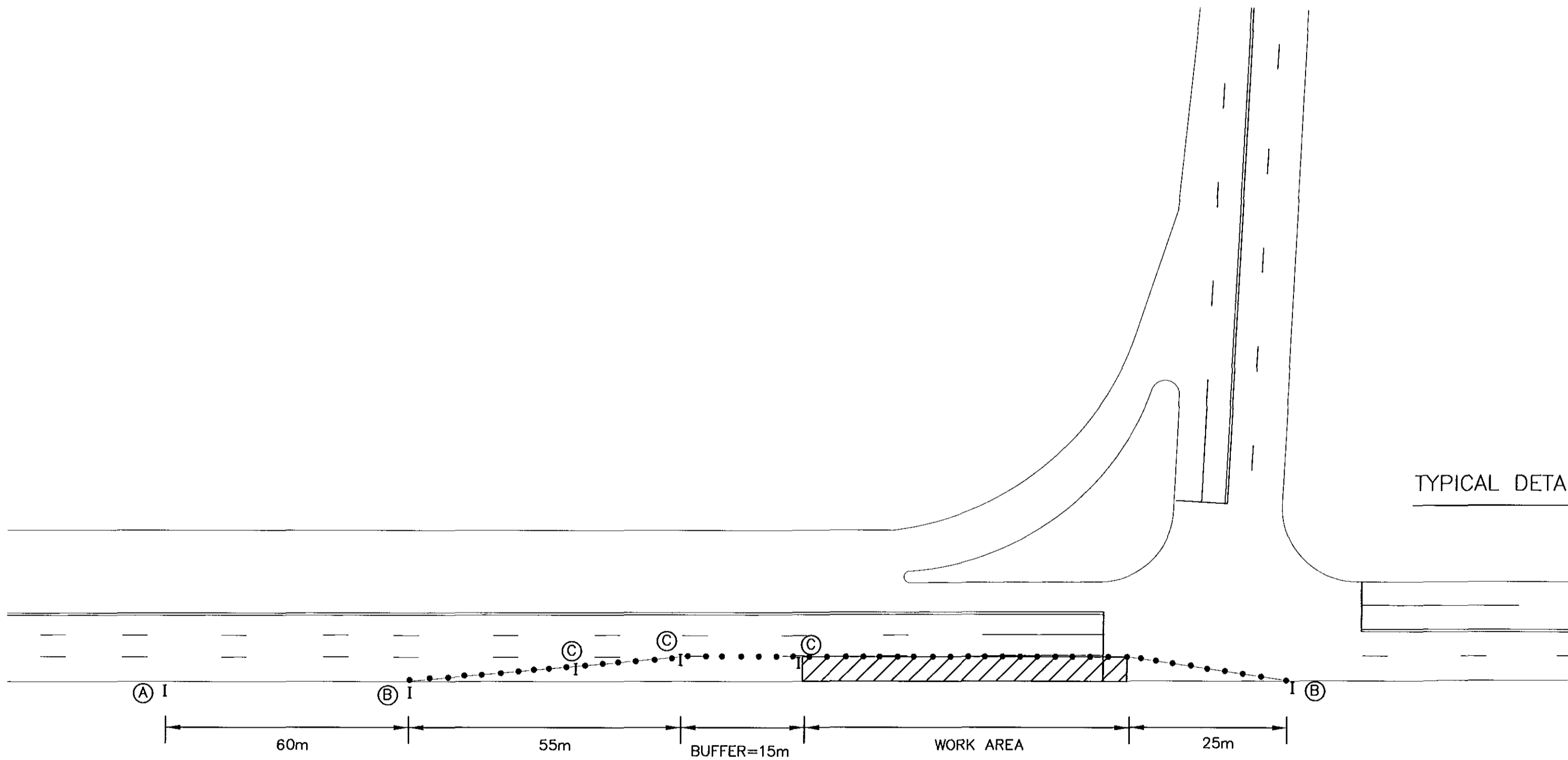
- THE CONTRACTOR SHALL INSTALL TEMPORARY "NO PARKING/TOW ZONE" SIGNS AS REQUIRED FOR EACH PHASE.
- INGRESS AND EGRESS TO ALL DRIVEWAYS WITHIN THE PROJECT LIMITS SHALL BE MAINTAINED AT ALL TIMES.



TYPICAL DETAIL FOR MID-BLOCK LOCATIONS



TYPICAL DETAIL AT INTERSECTIONS



TYPICAL DETAIL AT INTERSECTIONS

CITY OF HARTFORD, CONNECTICUT DEPARTMENT OF PUBLIC WORKS TRANSPORTATION SERVICES BUREAU			
MAINTENANCE & PROTECTION OF TRAFFIC PLAN DETAILS			
SUBMITTED PROJECT ENGINEER	RECOMMENDED MANAGER	APPROVED CITY ENGINEER	
DRAWN YSK	SCALE: HORIZ. NTS	DAYBOOK NO. 011371	SHEET 8 OF 9
CHECKED		DATE 4-5-99	FILE NAME airport-sw-mpt