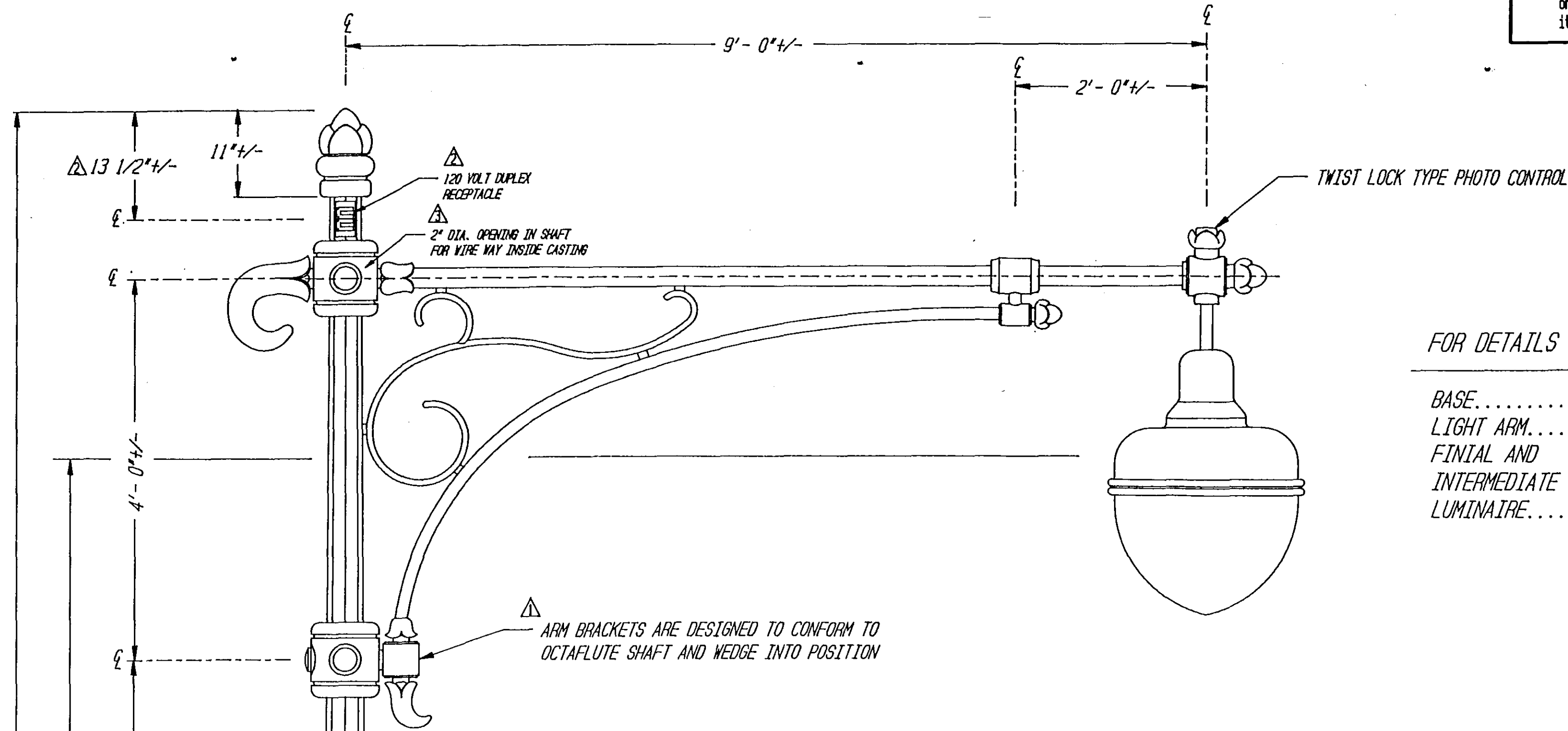


This drawing is the property of Spring City Elect. Mfg. Co. and is issued to the recipient with the understanding that it shall not be copied, duplicated, passed on to unauthorized parties, nor used for any purpose other than that for which it is specifically furnished except with Spring City's written permission.



REFER TO  
DRAWING #:

FOR DETAILS

BASE.....LP-18602  
LIGHT ARM.....LP-18606  
FINIAL AND  
INTERMEDIATE ORNAMENTATION.....LP-18604  
LUMINAIRE.....FIX-18605

#### LUMINAIRE SPECIFICATIONS

STYLE: HARTFORD  
HEIGHT: 35 1/4" +/-  
WIDTH: 24" +/-  
MATERIAL: ALUMINUM  
GLOBE: POLYCARBONATE WITH SLIGHTLY OBSCURING ETCHED EXTERIOR  
FINISH: PRIME PAINT AND FINISH PAINT  
LAMPING: 400 WATT HIGH PRESSURE SODIUM  
VOLTAGE: 120 VOLTS

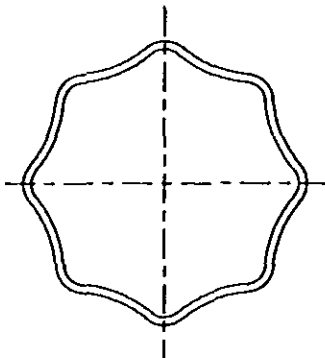
#### CROSS ARM SPECIFICATIONS

STYLE: HARTFORD  
HEIGHT: 4'-0" +/-  
WIDTH: 9'-0" +/- CL OF POST TO CL OF LUMINAIRE  
MATERIAL: STEEL PIPE AND STEEL TUBING WITH CAST IRON ORNAMENTATION AND STEEL TUBE SCROLL WORK  
FINISH: PRIME PAINT AND FINISH PAINT

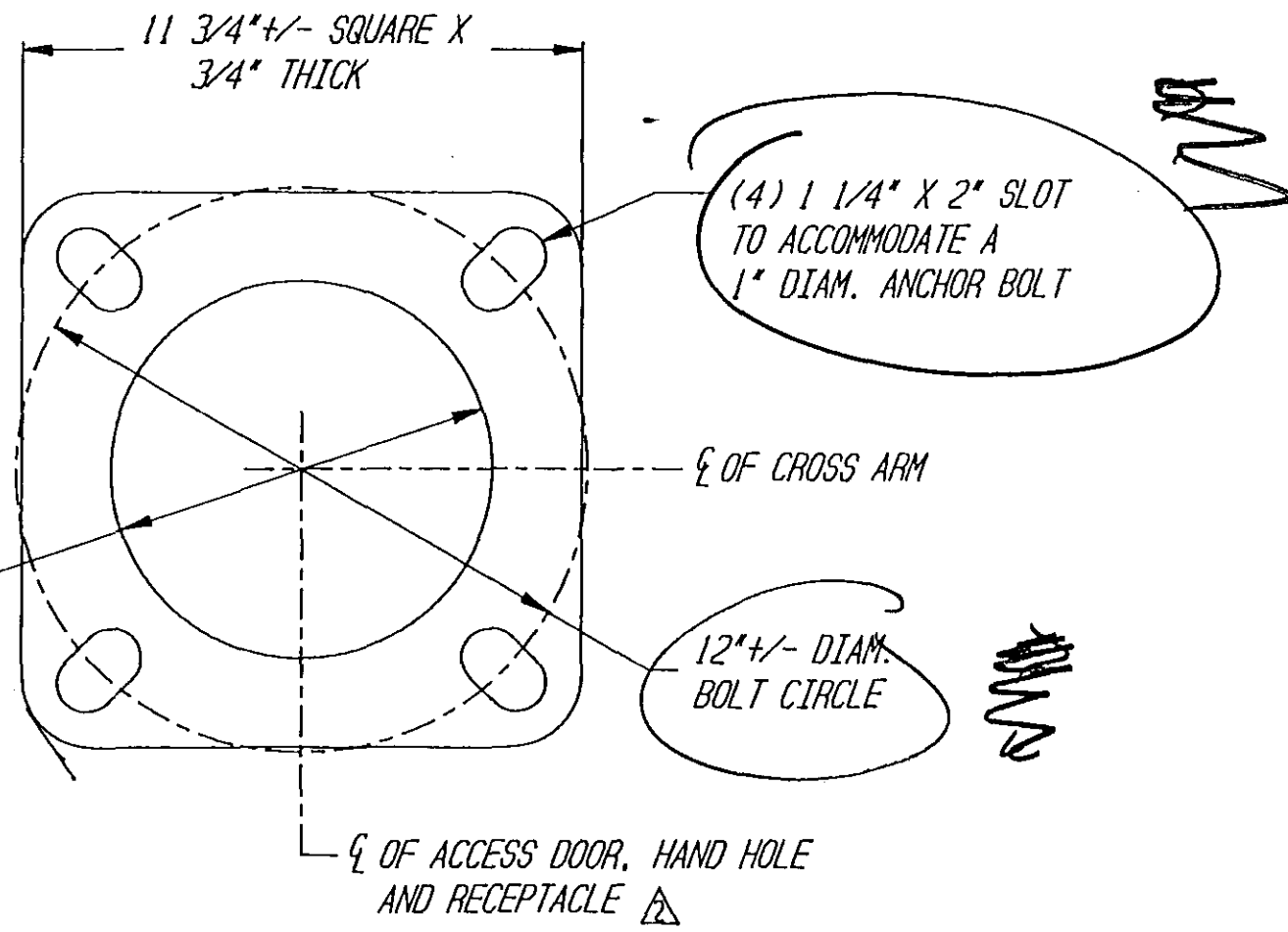
#### LAMP POST SPECIFICATIONS

STYLE: MADISON STEEL WITH FINIAL  
HEIGHT: 30'-0" +/-  
LIGHT CENTER: 26'-2 5/8" +/-  
BASE: 20" +/- DIAMETER  
MATERIAL: 11 GAUGE - OCTAFLUTE - STEEL MONOTUBE CONSTRUCTION  
SHAFT: 2 PIECE, (WRAP AROUND) HEAVY WALL CAST IRON PER A.S.T.M. A 48-83 CLASS 30  
BASE: PRIME PAINT AND FINISH PAINT  
FINISH: LOCATED IN BASE TO COINCIDE WITH HAND HOLE IN STEEL SHAFT  
ACCESS DOOR: (4) 1" X 3/8" + 4" HOOK (FULLY GALVANIZED WITH 2 GALVANIZED NUTS AND 2 GALVANIZED WASHERS PER BOLT)  
ANCHOR BOLTS: 5" REQUIRED (ABOVE CONCRETE PAD)  
BOLT PROJECTION:

QUANTITY: 32 REQUIRED



SECTION A-A  
11 GAUGE STEEL  
OCTAFLUTE  
N.T.S.




ANCHOR BOLT DETAIL

3" = 1'-0"

REVIEWED BY  
DO1  
NO TOLERANCES TAKEN  
NEED SHOWN

PLEASE NOTE: ALL COMPONENTS TO BE PRIME PAINTED AND FINISH PAINTED. TOUCH UP MAY BE REQUIRED AT TIME OF INSTALLATION. TOUCH UP PAINT SUPPLIED BY SPRING CITY.

REVISED: T. O'NEIL	DATE 1/2/91
REVISED: T. O'NEIL	DATE 11/16/90
REVISED: T. O'NEIL	DATE 7/18/90
 <b>Spring City Electrical Mfg. Co.</b> SINCE 1923 HALL AND MAIN STREETS - P.O. DRAWER A - SPRING CITY, PA. 19475 - PHONE (215) 948-4000 FAX (215) 948-5577	
DESCRIPTION	THE MADISON 30'-0" STEEL POST WITH THE HARTFORD CROSS ARM AND THE HARTFORD LUMINAIRE
CUSTOMER	HARTFORD, CONNECTICUT
SCALE	DRAWN BY: T. O'NEIL
APPROX. 1" = 1'-0"	DATE 6-13-90
	DRAWING NO. LP-18614