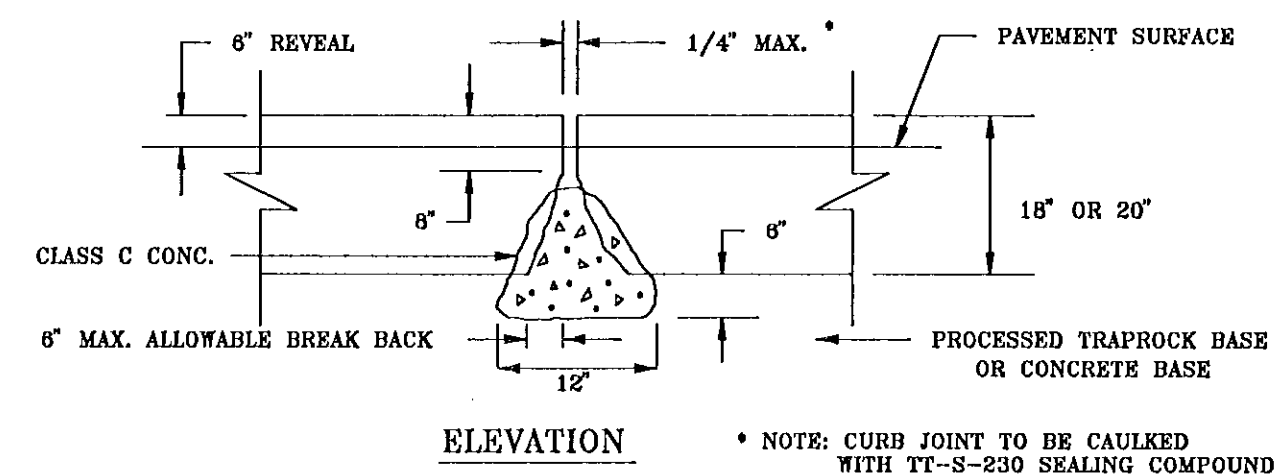
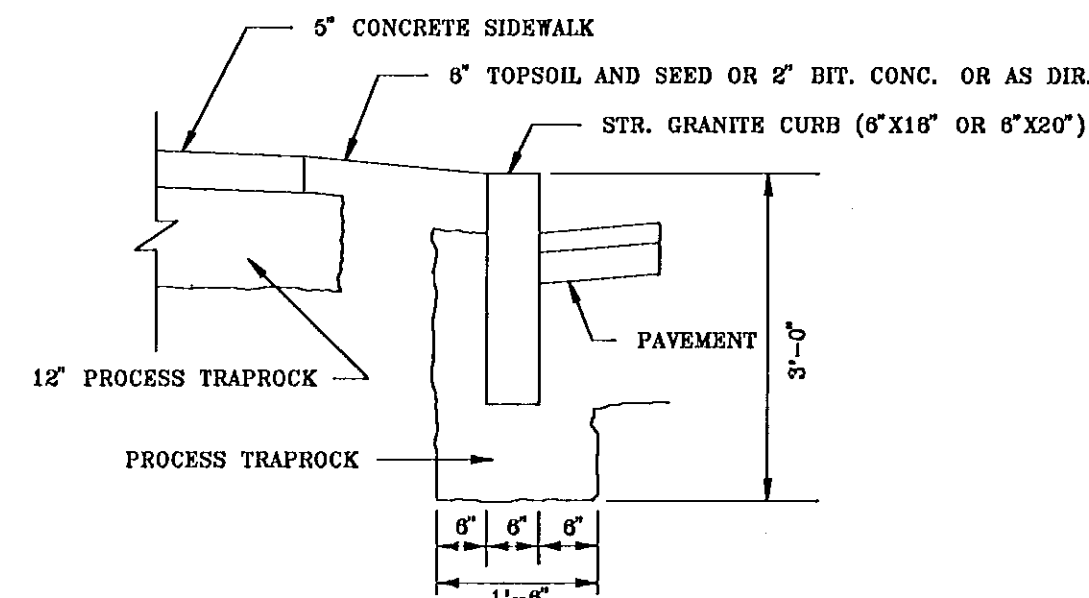


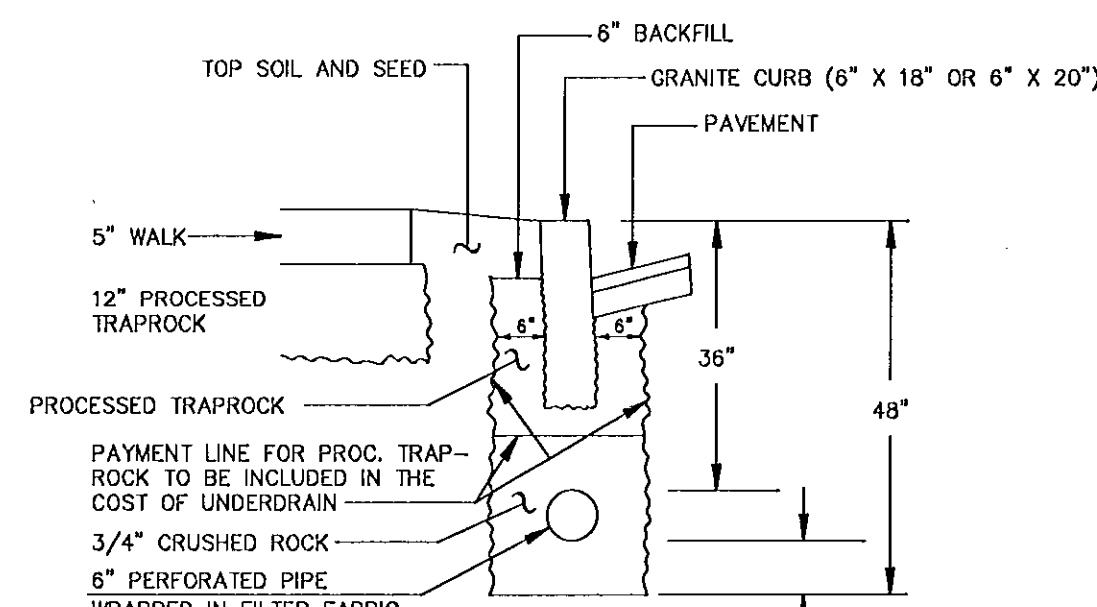
SIDEWALK RAMP TYPE II



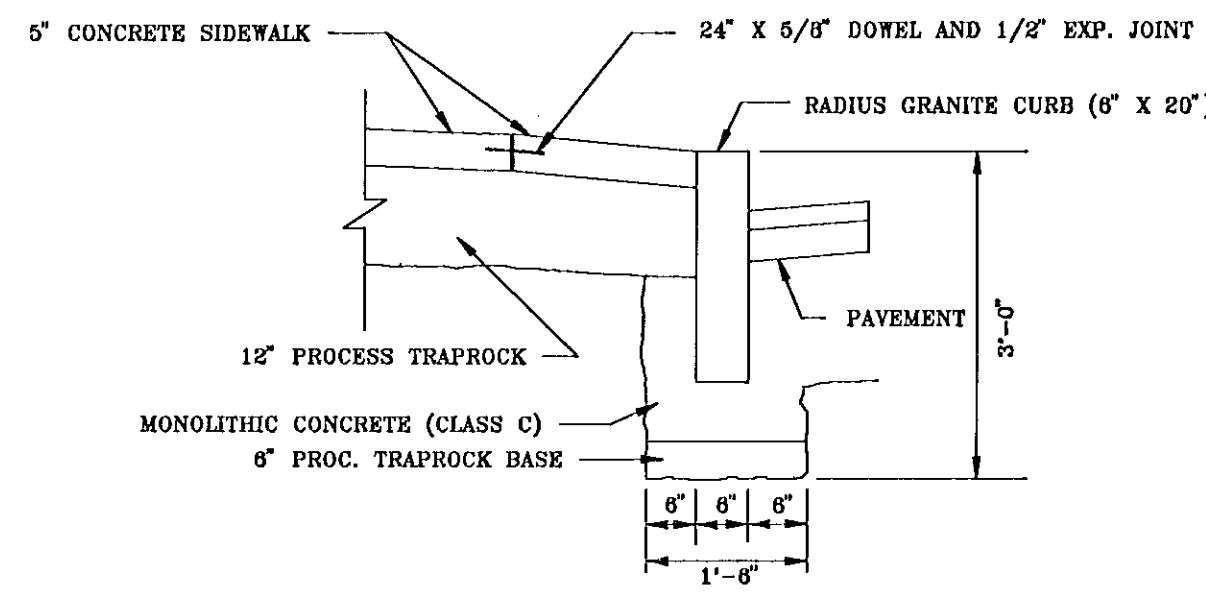
TYPICAL JOINT DETAIL FOR STRAIGHT GRANITE CURB



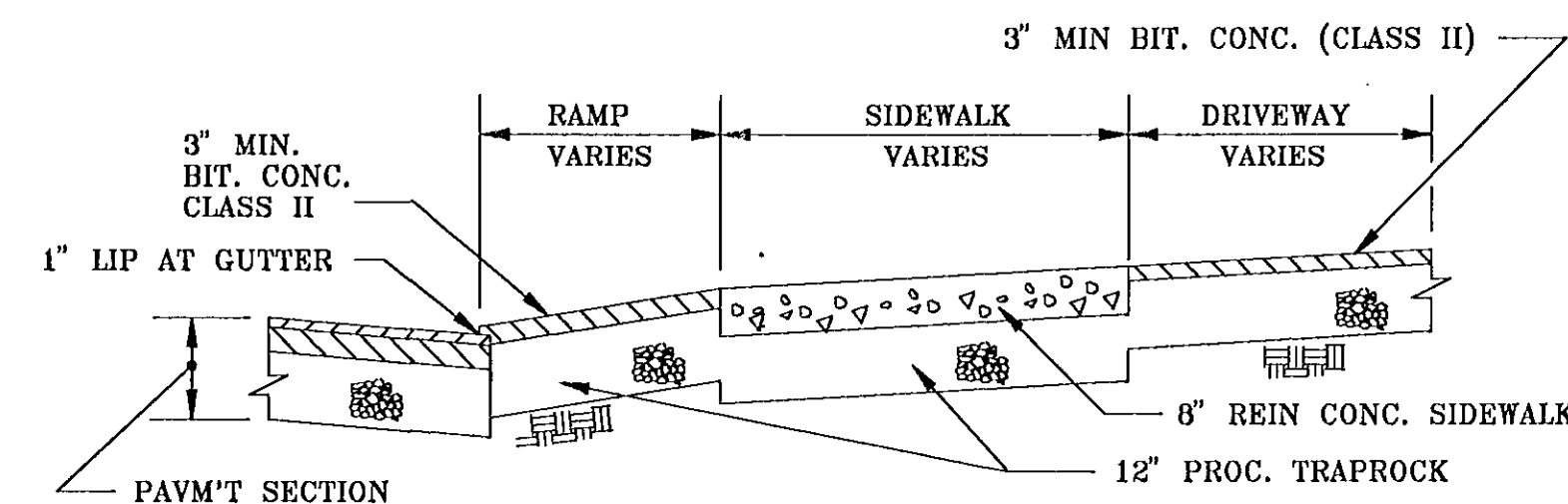
STRAIGHT GRANITE CURB SECTION



6" CURB UNDERDRAIN FOR GRANITE CURB

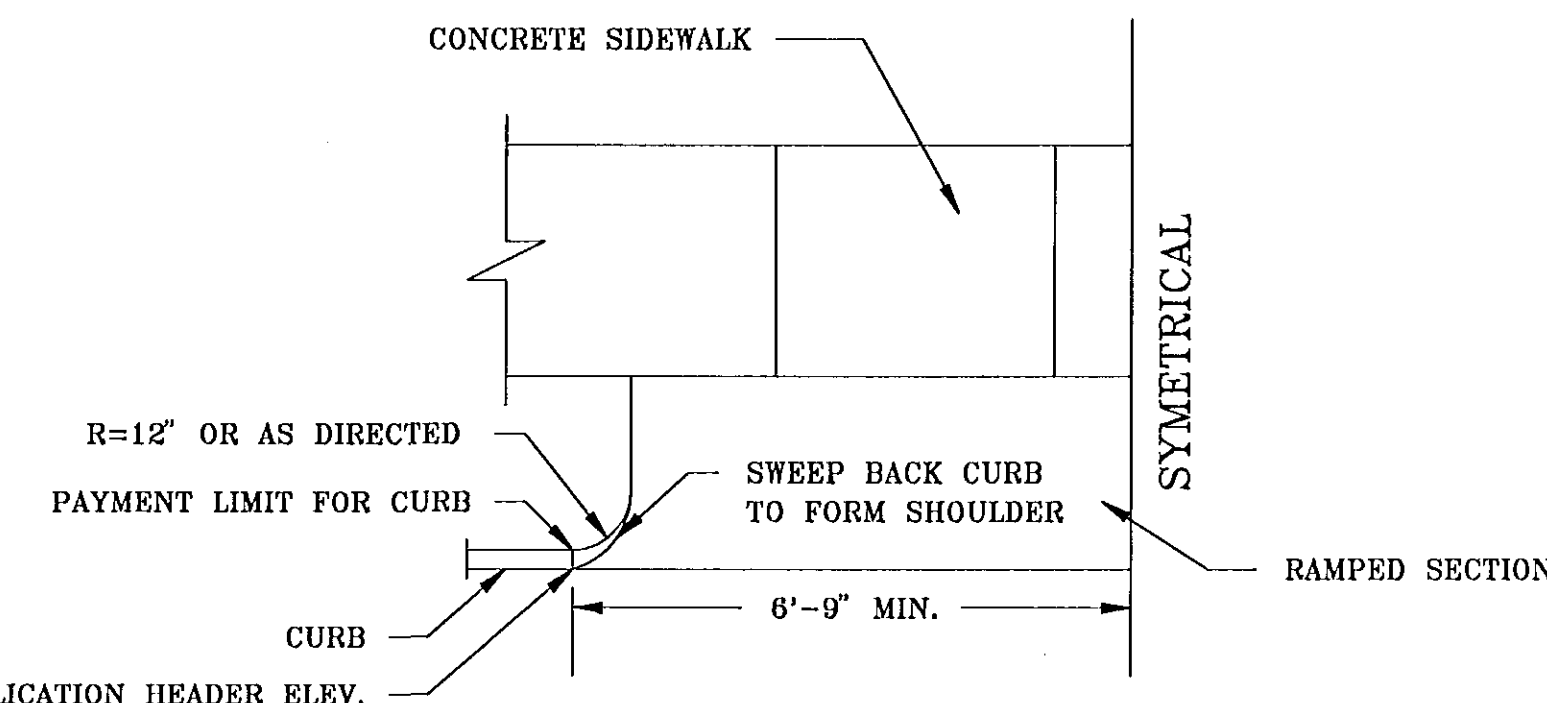


RADIUS GRANITE CURB SECTION

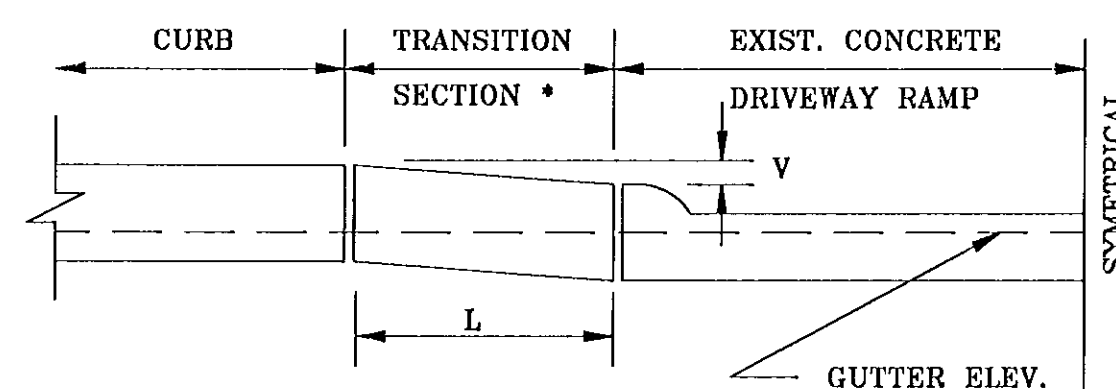


BITUMINOUS RAMP AND DRIVEWAY (SECTION)

NOTE:
BITUMINOUS CONCRETE LIP CURBING AND BITUMINOUS CONCRETE INSTALLED AS PART OF THE DRIVEWAY BEYOND THE PAYMENT LIMIT SHALL BE INCLUDED IN THE COST FOR "BITUMINOUS CONCRETE DRIVEWAY".



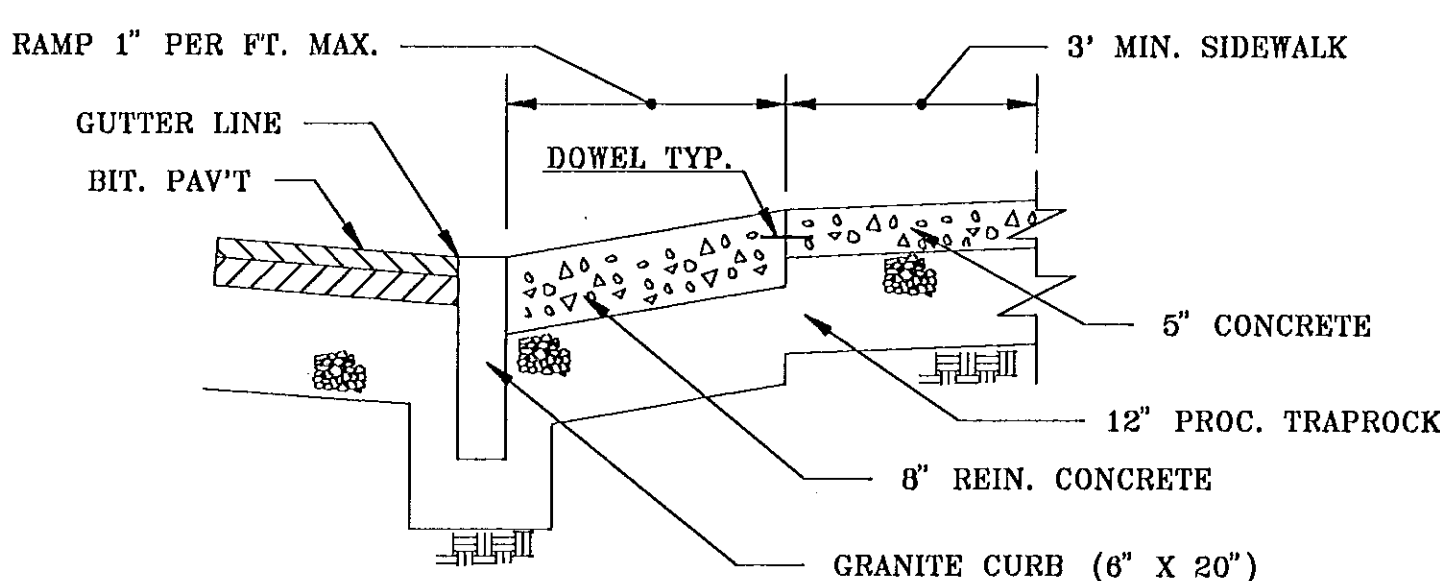
BITUMINOUS DRIVEWAY (HALF PLAN)



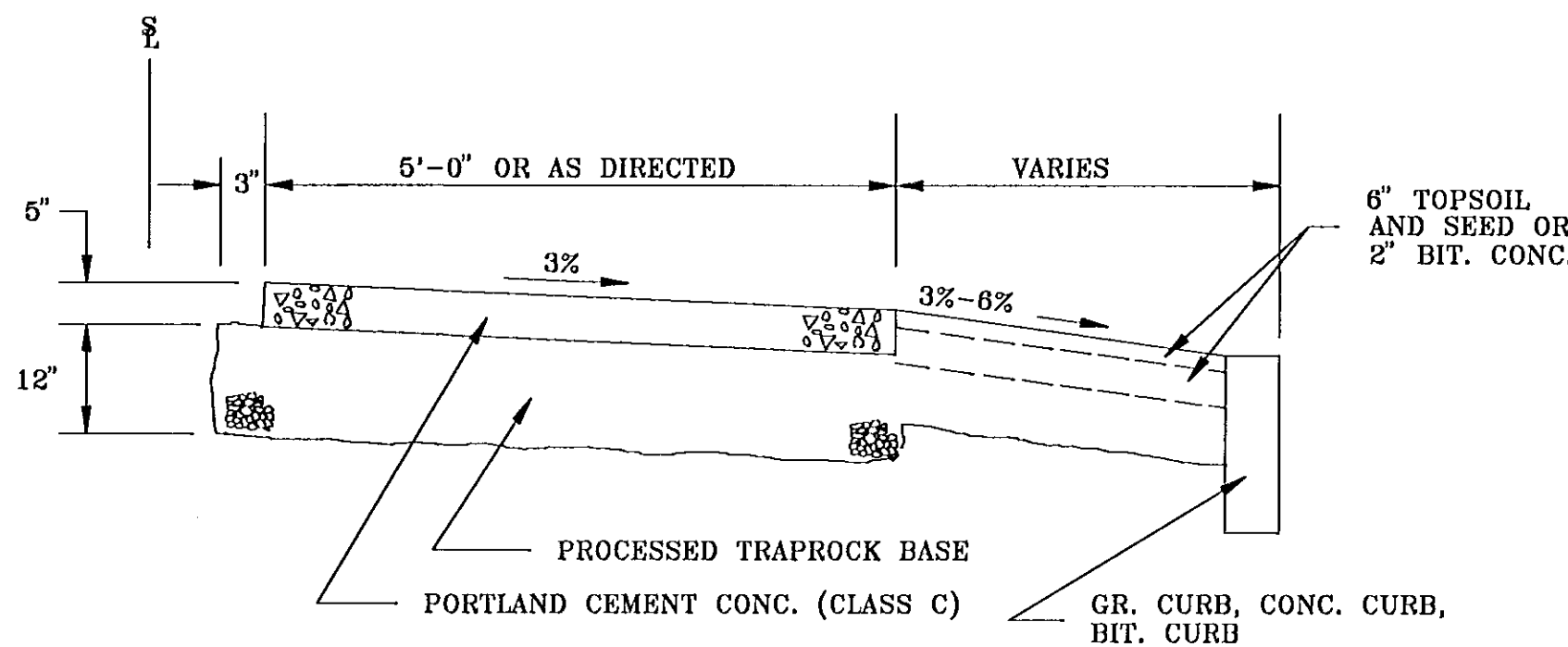
CURBING TRANSITION AT EXIST. CONCRETE DRIVEWAY RAMP

NOTE: * FOR GRANITE CURB SET THE LAST SECTION TO MATCH EXIST. DRIVE SHOULDER ELEV. MIN. CLOSURE SECTION TO BE 4'. FOR BIT. CONC. DEPRESS CURB TO MEET EXIST. DRIVE SHOULDER MIN. SECTION TO BE 10'. SEE TRANSITION TABLE BELOW.

TRANSITION TABLE	
VERTICAL (V)	CURB LENGTH (L)
1"	4'-0" MIN.
2"	5'-0" MIN.
3"	6'-0" MIN.

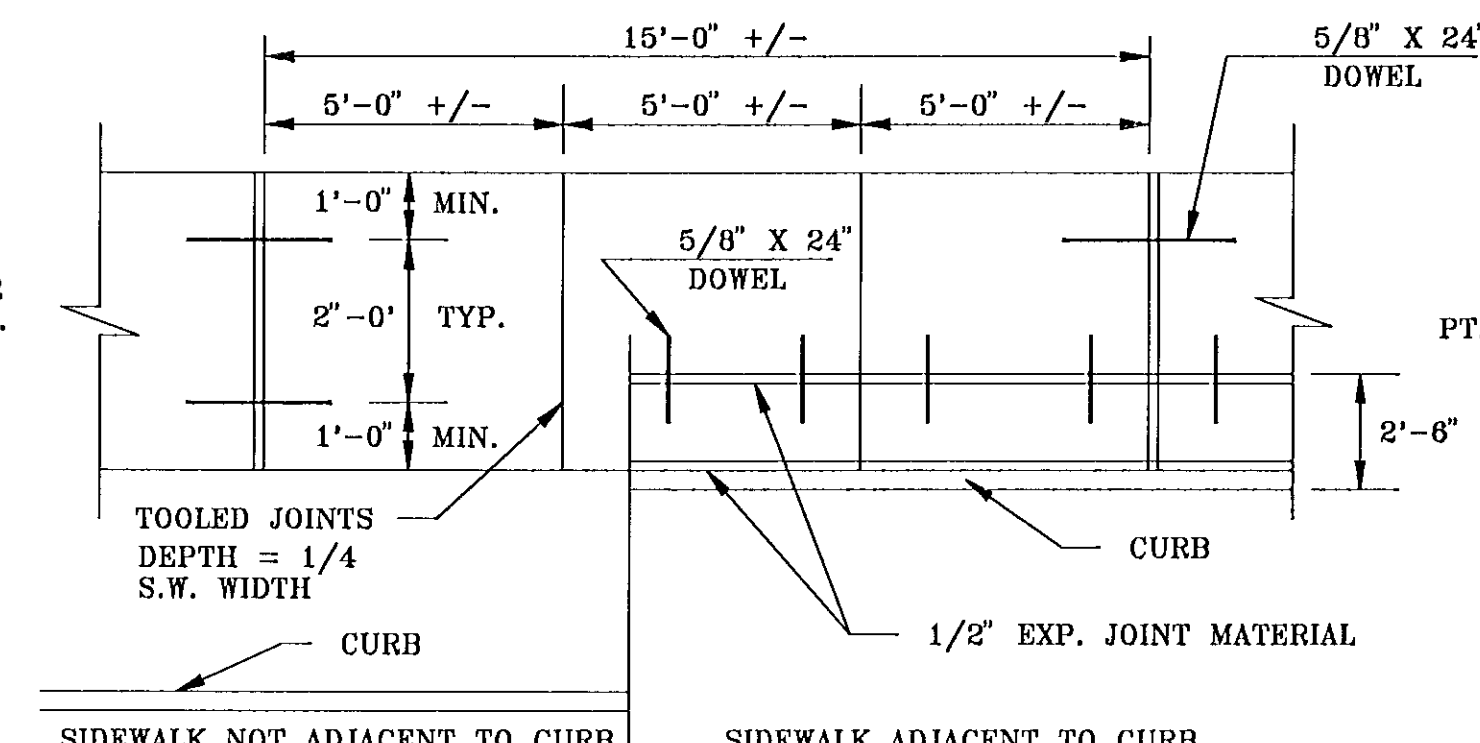


SECTION C-C



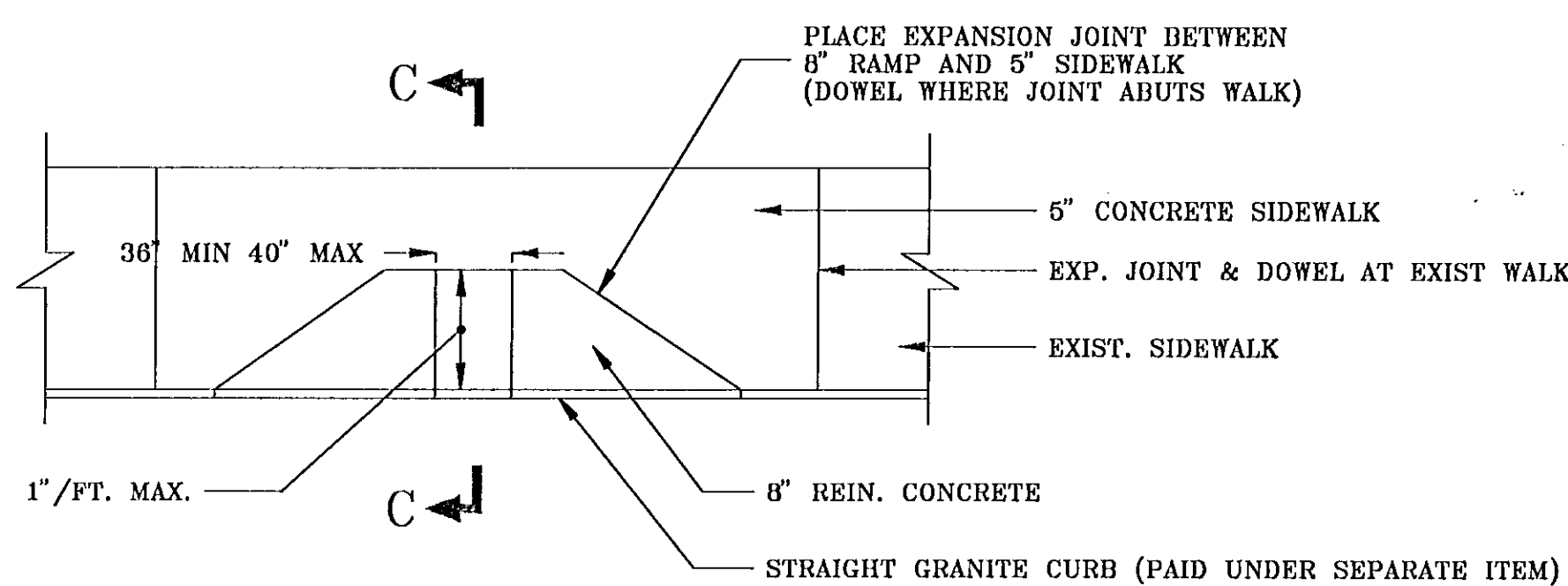
SECTION

5" CONCRETE SIDEWALK

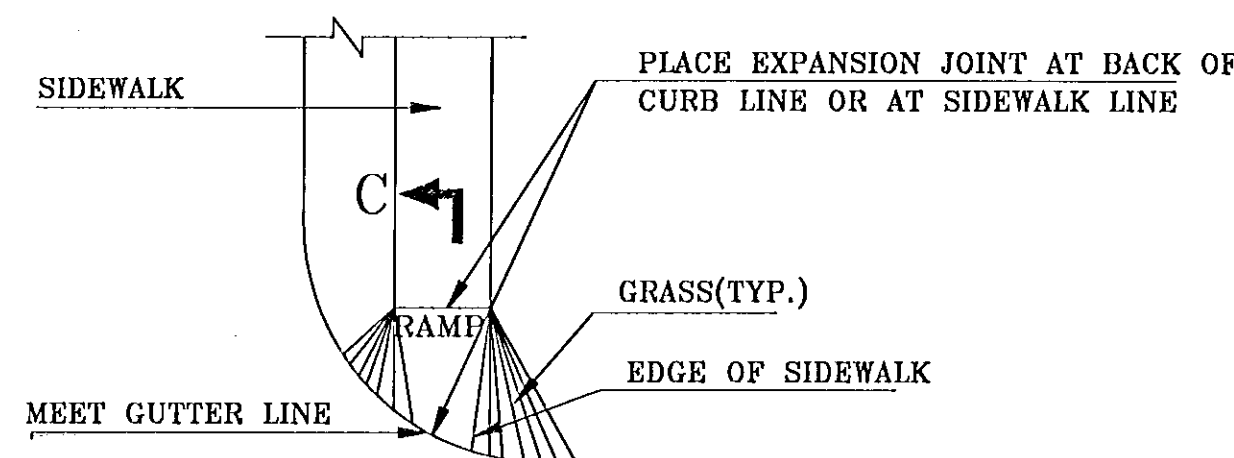


PLAN

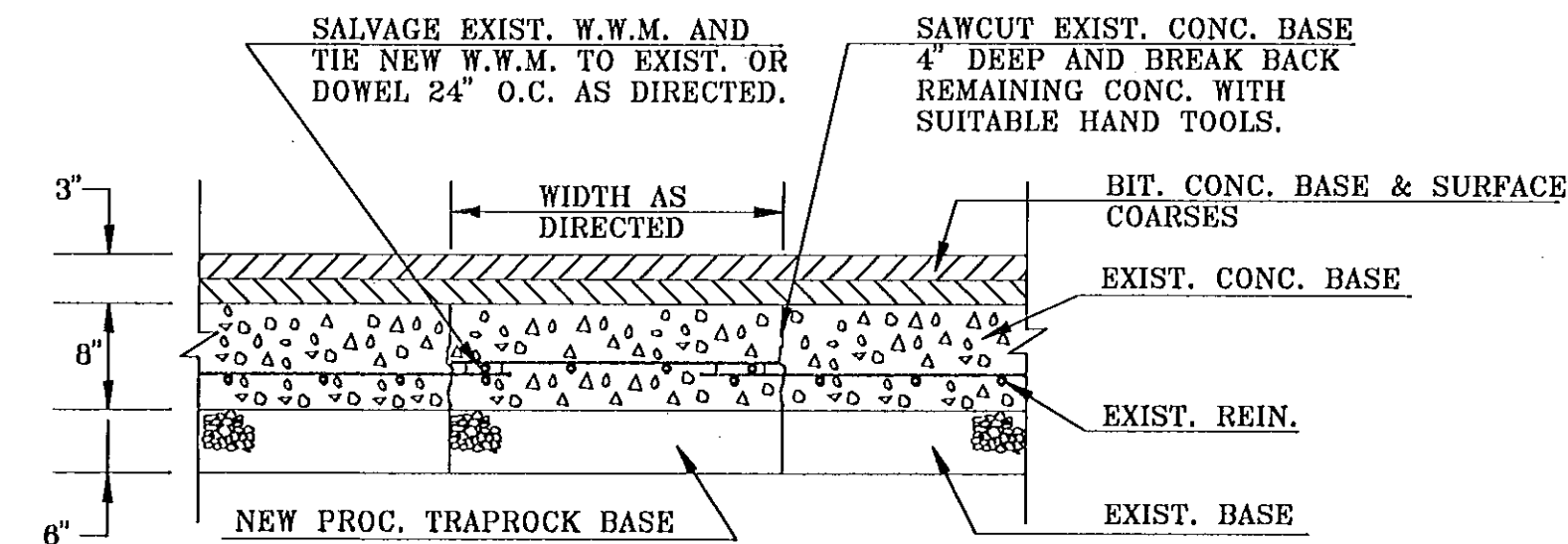
5" CONCRETE SIDEWALK



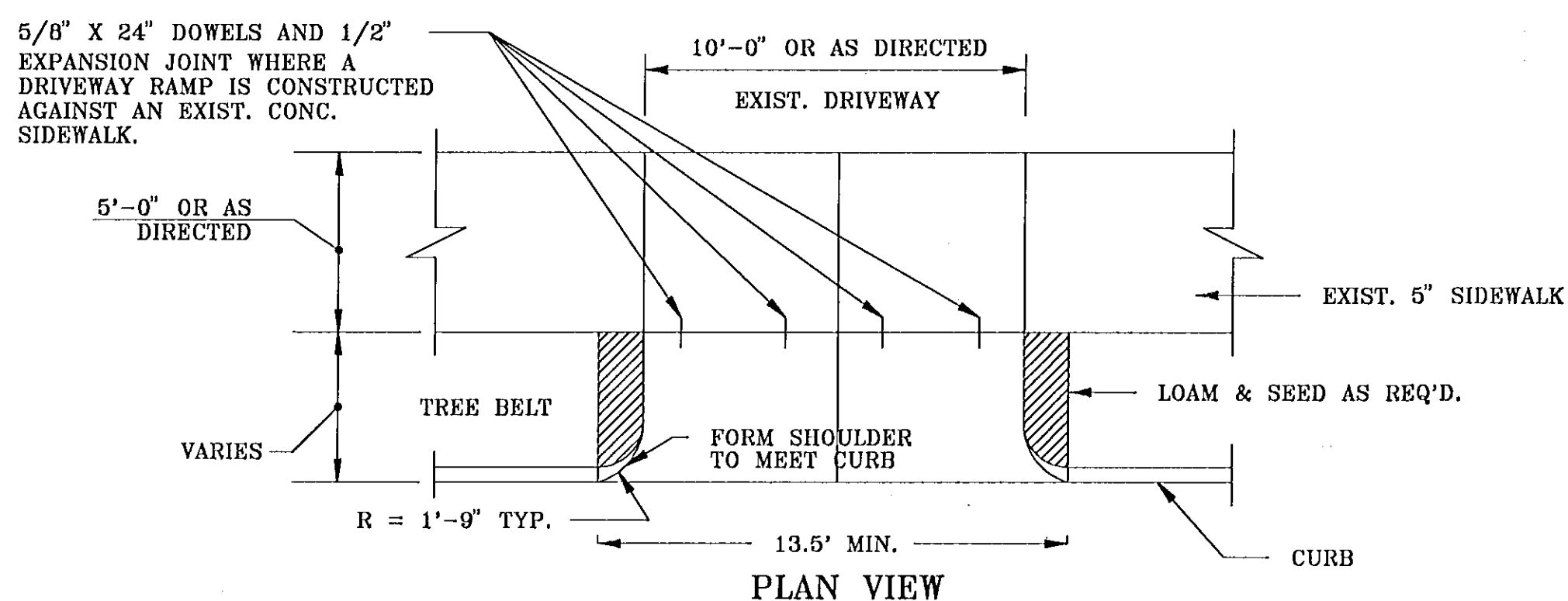
SIDEWALK RAMP TYPE I



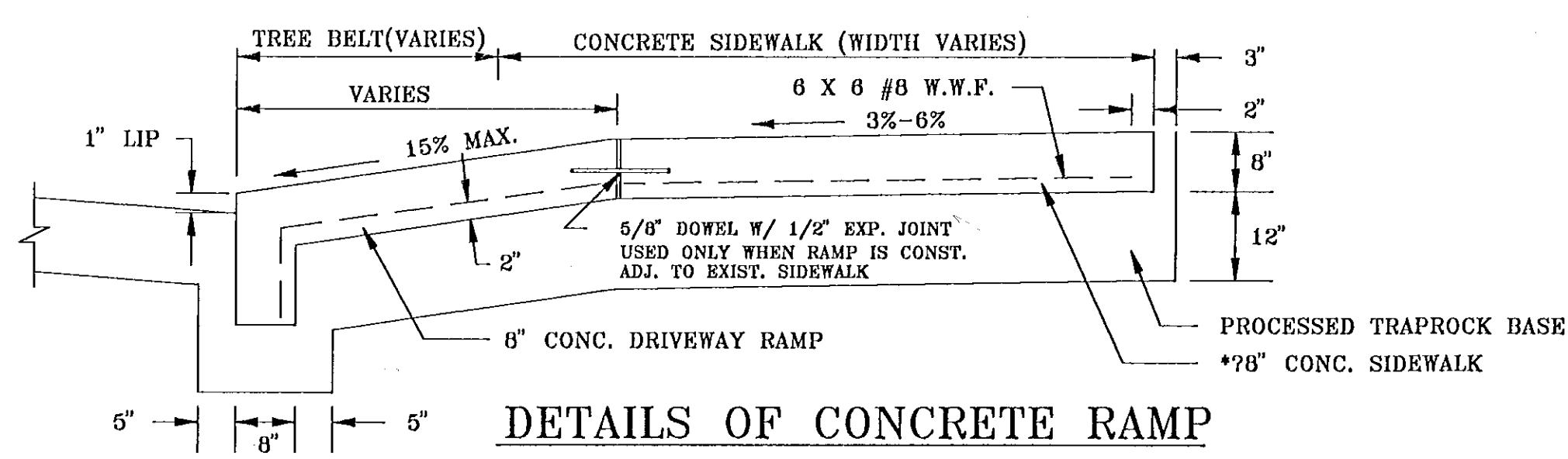
SIDEWALK RAMP TYPE III



REINFORCED CONCRETE BASE REPAIR



PLAN VIEW



DETAILS OF CONCRETE RAMP

CITY OF HARTFORD, CONNECTICUT
DEPARTMENT OF PUBLIC WORKS
TRANSPORTATION SERVICES BUREAU

RECONSTRUCTION OF
ASYLUM/FARMINGTON AVES.
STANDARD CONSTRUCTION DETAILS

SUBMITTED PROJECT ENGINEER DATE CHECKED	RECOMMENDED DIVISION MANAGER DATE N.T.S.	APPROVED CITY ENGINEER DATE FILE
--	---	---