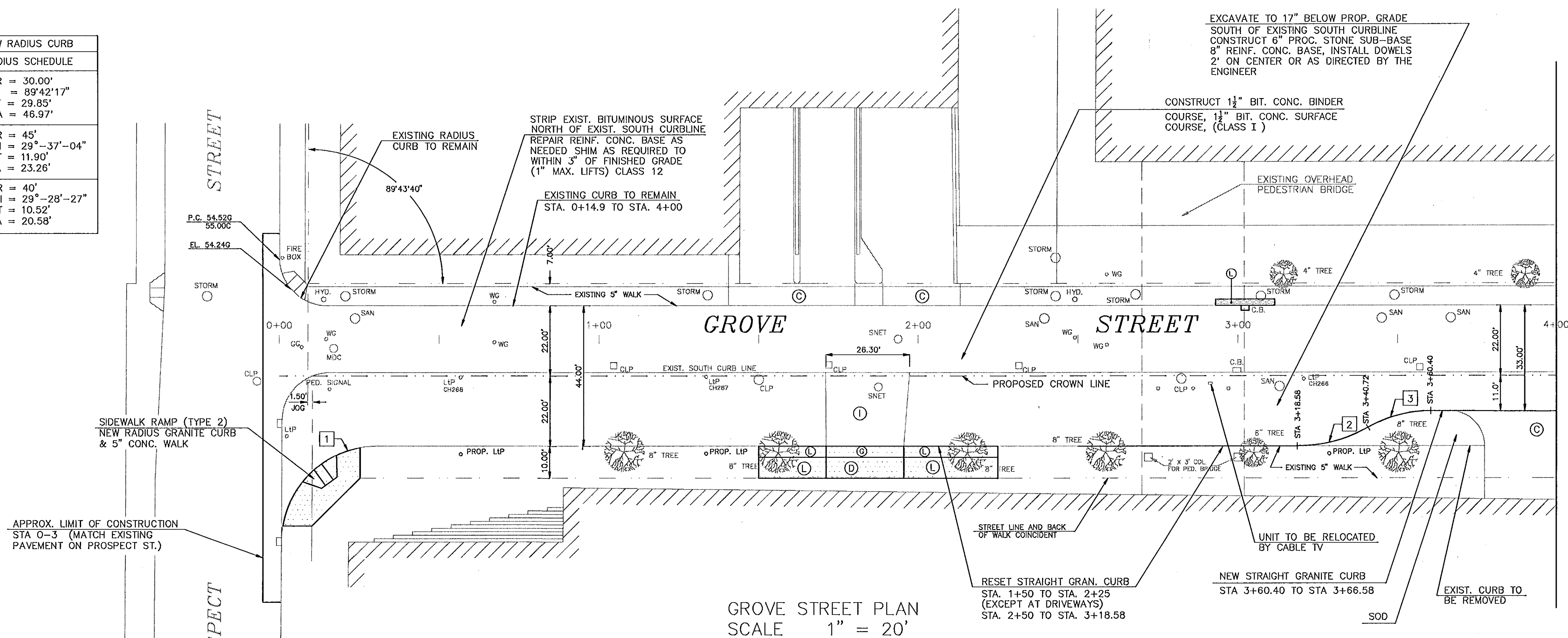


NEW RADIUS CURB	
RADIUS SCHEDULE	
1	R = 30.00' I = 89°42'17" T = 29.85' A = 46.97'
2	R = 45' I = 29°37'04" T = 11.90' A = 23.26'
3	R = 40' I = 29°28'27" T = 10.52' A = 20.58'



No. EL. 55

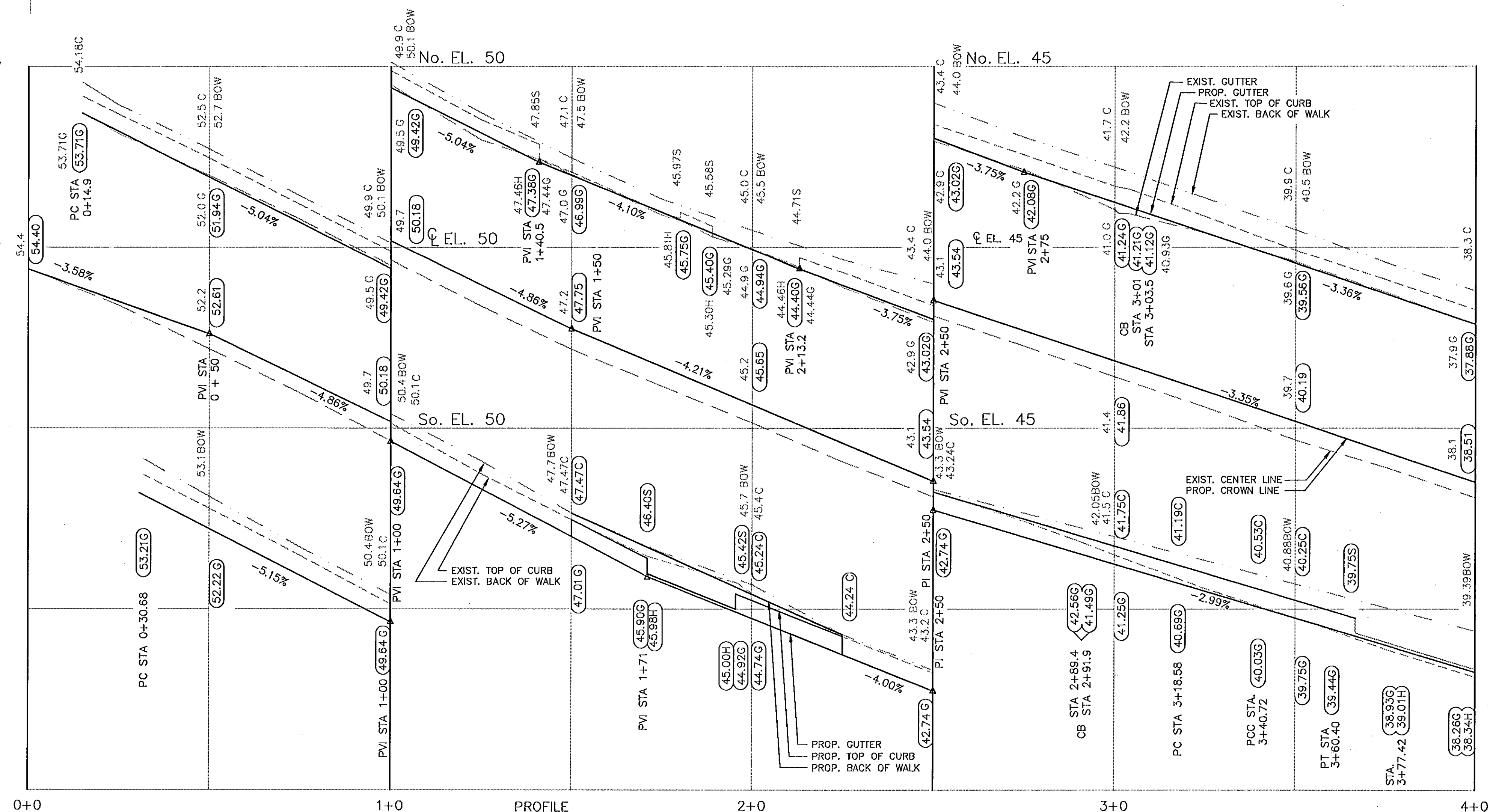
No. EL. 50

No. EL. 45

So. EL. 55

So. EL. 50

So. EL. 45



NOTES:

- RIM OR FRAME ELEVATIONS OF ALL UTILITY GATE BOXES, MANHOLES AND CATCH BASINS ARE TO BE ADJUSTED AS REQUIRED TO MATCH PROPOSED FINISHED PAVED SURFACES.
- EXISTING DRIVEWAY TO REMAIN.
 - CONSTRUCT 8" REINFORCED CONCRETE SIDEWALK.
 - CONSTRUCT 8" REINFORCED CONC. DRIVEWAY RAMP.
 - EXISTING DRIVEWAY RAMP TO BE REMOVED.
 - CONSTRUCT 5" CONC. SIDEWALK
- CALL BEFORE YOU DIG - THE CONTRACTOR IS HEREBY REMINDED THAT PURSUANT TO PUBLIC ACT 87-71, REQUIRES NOTIFICATION TO UTILITY COMPANIES OF PENDING EXCAVATION AT OR NEAR PUBLIC UTILITIES. THE CONTRACTOR SHALL CALL THIS NUMBER, 1-800-922-4455, AT LEAST TWO FULL DAYS, EXCLUDING SATURDAYS, SUNDAYS AND HOLIDAYS, BUT NOT MORE THAN (ONE MONTH) THIRTY DAYS.
- BENCHMARKS
 - EL. 56.65 B.M. ON SW CORNER OF TRAFFIC SIGNAL LIGHT POLE BASE AT WEST SIDE OF PROSPECT ST. OPPOSITE GROVE ST.
 - EL. 46.62 B.M. ON SOUTH LUG OF HYDRANT ON NORTH SIDE OF GROVE ST. STA. 2+49.
 - EL. 41.26 B.M. SET 3.6' ABOVE GROUND ON TOP OF SE CORNER OF EAST RETAINING WALL OF PHOENIX MUTUAL UNDERGROUND PARKING GARAGE.
 - EL. 31.37 B.M. ON SE CORNER OF CONC. BASE FOR TRAFFIC CONTROL BOX AT NW CORNER OF GROVE ST. AND COLUMBUS BLVD.
 - EL. 26.75 B.M. ON DISK AT SW CORNER OF GROVE ST. AND MECHANIC ST.
- THE LOCATION OF EXISTING UTILITIES ARE APPROXIMATE AND HAVE BEEN BASED ON AVAILABLE INFORMATION. THE CONTRACTOR IS RESPONSIBLE FOR VERIFYING THESE LOCATIONS IN THE FIELD AND TAKING ALL REQUIRED PRECAUTIONS AND NECESSARY STEPS TO PROTECT THESE UTILITIES FROM DAMAGE. ANY DAMAGE RESULTING FROM THE CONTRACTOR'S NEGLIGENCE, AS DETERMINED BY THE ENGINEER, SHALL RESULT IN THE CONTROLLING UTILITY MAKING REPAIRS AT THE CONTRACTOR'S EXPENSE.
- THE CONTRACTOR SHALL PROTECT EXISTING TREES, CURBING AND WALKS TO REMAIN DURING EXCAVATION AND CONSTRUCTION OF WIDENED ROADWAY.
- ALL FOUNDATIONS, BASES OR ANY OTHER OBSTRUCTIONS TO THE CONSTRUCTION OF THE ROADWAY SHALL BE REMOVED TO A DEPTH OF 36" BELOW FINISHED GRADE AND SHALL BE PAID FOR AS PART OF THE SQUARE YARD UNIT COST FOR BID ITEM 34 "ROADWAY EXCAVATION"
- CONTRACTOR IS TO DELIVER ALL SALVAGEABLE LIGHT POLES TO THE CITY YARD AT 40 JENNINGS ROAD.
- ACCESS TO AND FROM PARKING GARAGES AND LOADING DOCKS IS TO BE MAINTAINED THROUGHOUT CONSTRUCTION ACTIVITIES. CRITICAL HOURS OF ACCESS AND EGRESS FOR PARKING GARAGES ARE 7:30 a.m. TO 9:30 a.m., AND 3:30 p.m. TO 5:00 p.m. IT WILL BE THE CONTRACTOR'S RESPONSIBILITY TO COORDINATE ACTIVITIES WITH TRAVELER'S INS. COMPANY AND PHOENIX HOME LIFE INS. COMPANY.

LEGEND	
CB	CATCH BASIN
WG	WATER GATE
GC	GAS GATE
SD	STORM DRAIN MANHOLE
SAN	SANITARY MANHOLE
SNET	TELEPHONE MANHOLE
CLP	CLIP MANHOLE
LIP	CITY LIGHT POLE
CH234	HELICO POLE
HYD	FIRE HYDRANT
PT	POINT OF VERTICLE INTERSECTION
PC	POINT OF CURVATURE
PT	POINT OF TANGENCY
68.56	EXISTING ELEVATION
69.72	PROPOSED ELEVATION

CITY OF HARTFORD, CONNECTICUT
DEPARTMENT OF PUBLIC WORKS
TRANSPORTATION SERVICES

GROVE STREET WIDENING
PLAN AND PROFILE

SUBMITTED PROJECT ENGINEER R. S. [Signature]		RECOMMENDED DIVISION MANAGER J. F. [Signature]		APPROVED CITY ENGINEER E. [Signature]	
DRAWN	RDS	SCALE	DAYBOOK NO.	011205	SHEET 9
CHECKED		Horiz. 1" = 20'	DATE	MAY 1993	OF 11
		Vert. 1" = 2'	FILE NAME	GROVE.DWG	