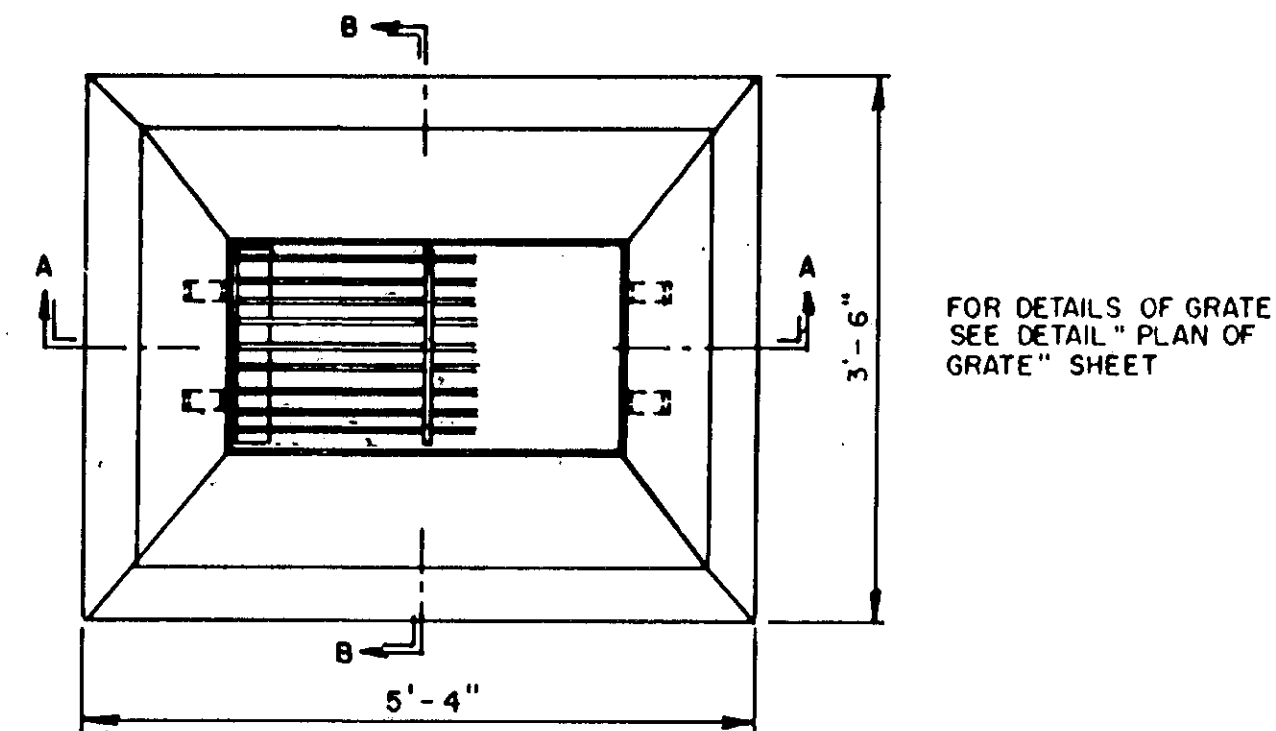
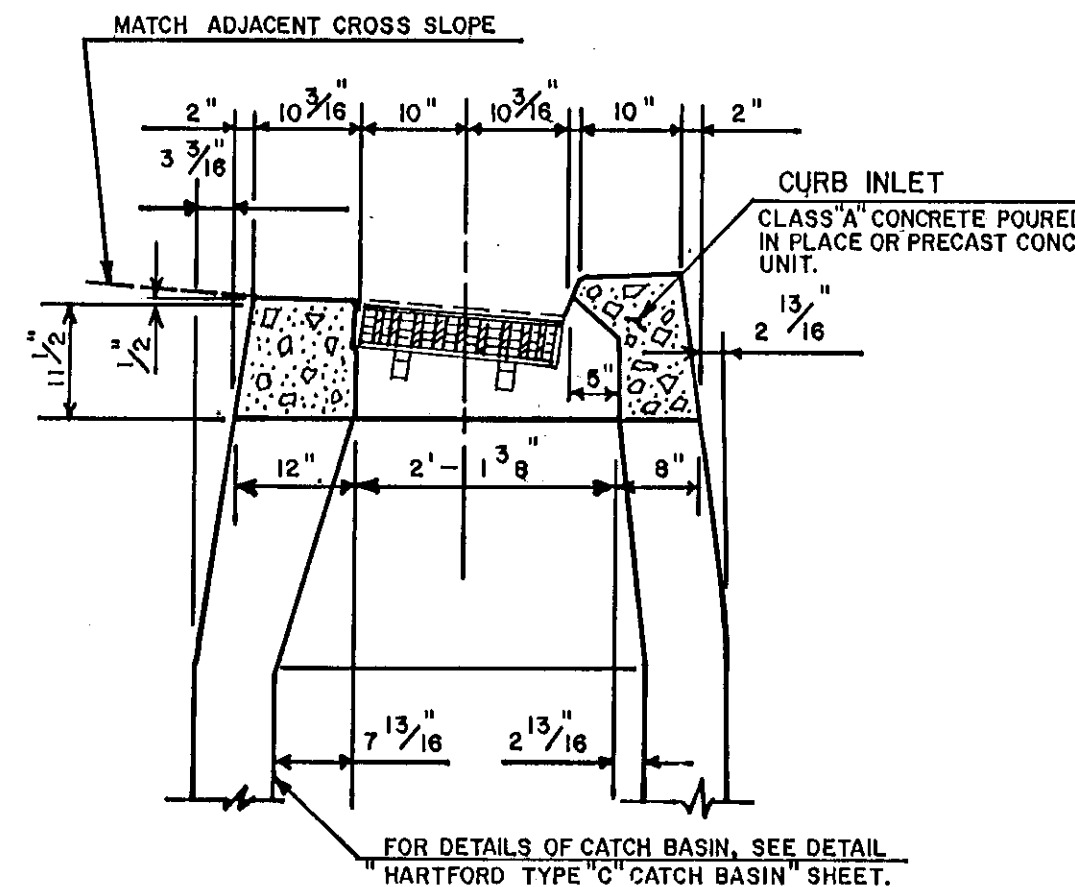


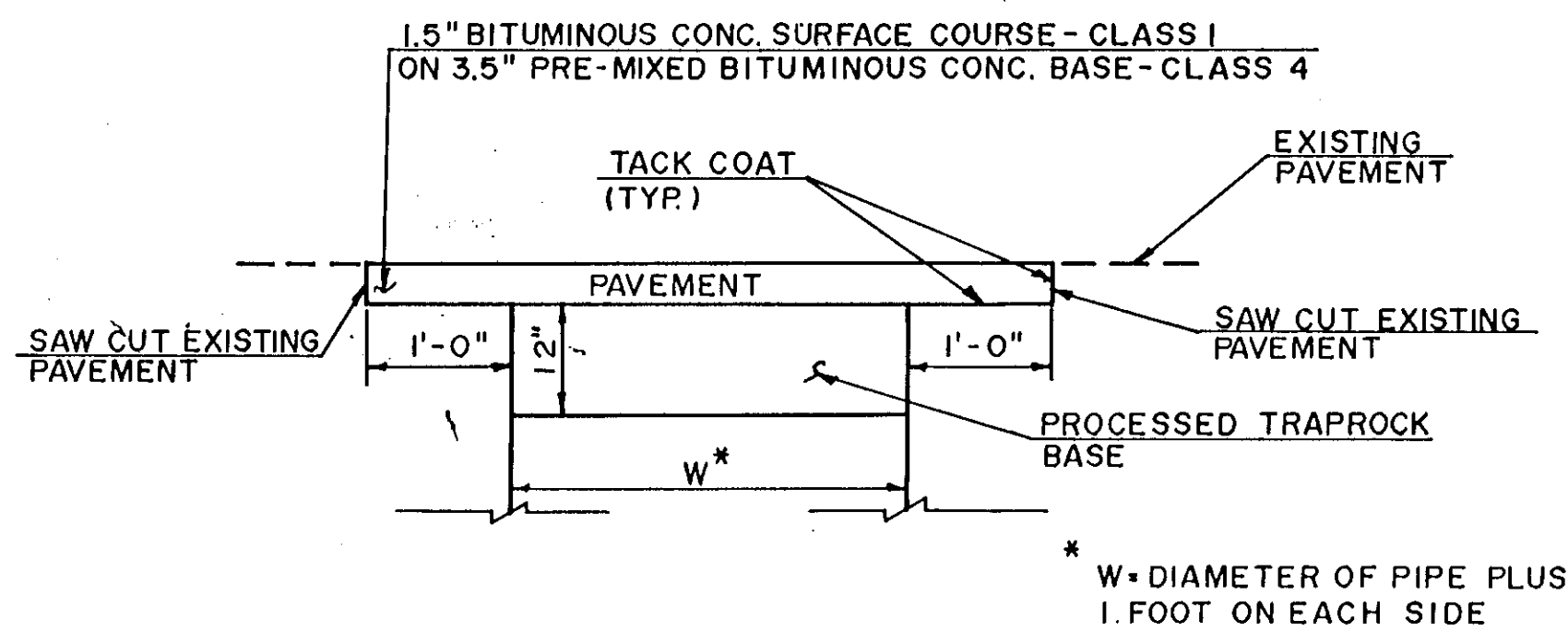
CITY MERESTONE



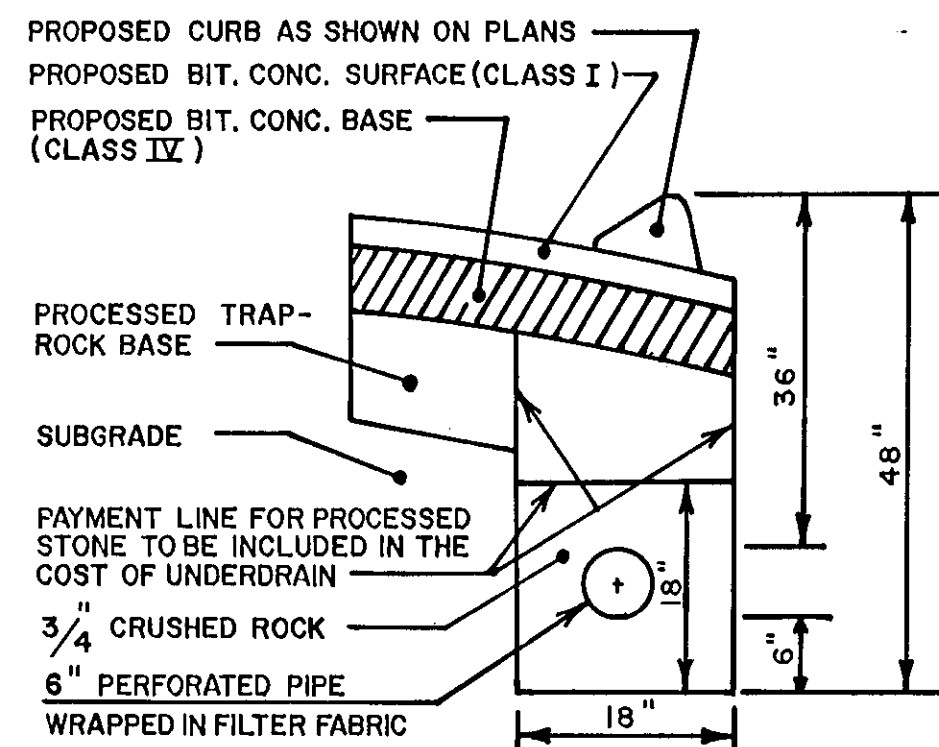
HARTFORD TYPE 'C-L' CATCH BASIN INLET



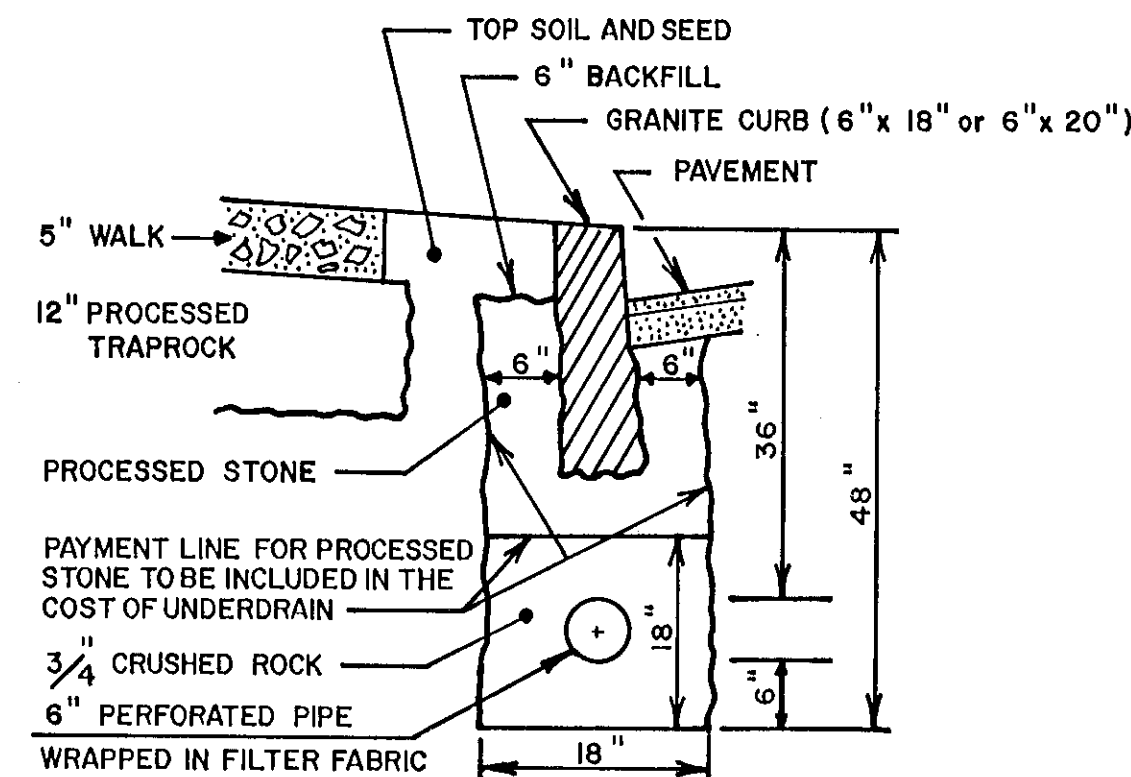
TYPE "C" CATCH BASIN



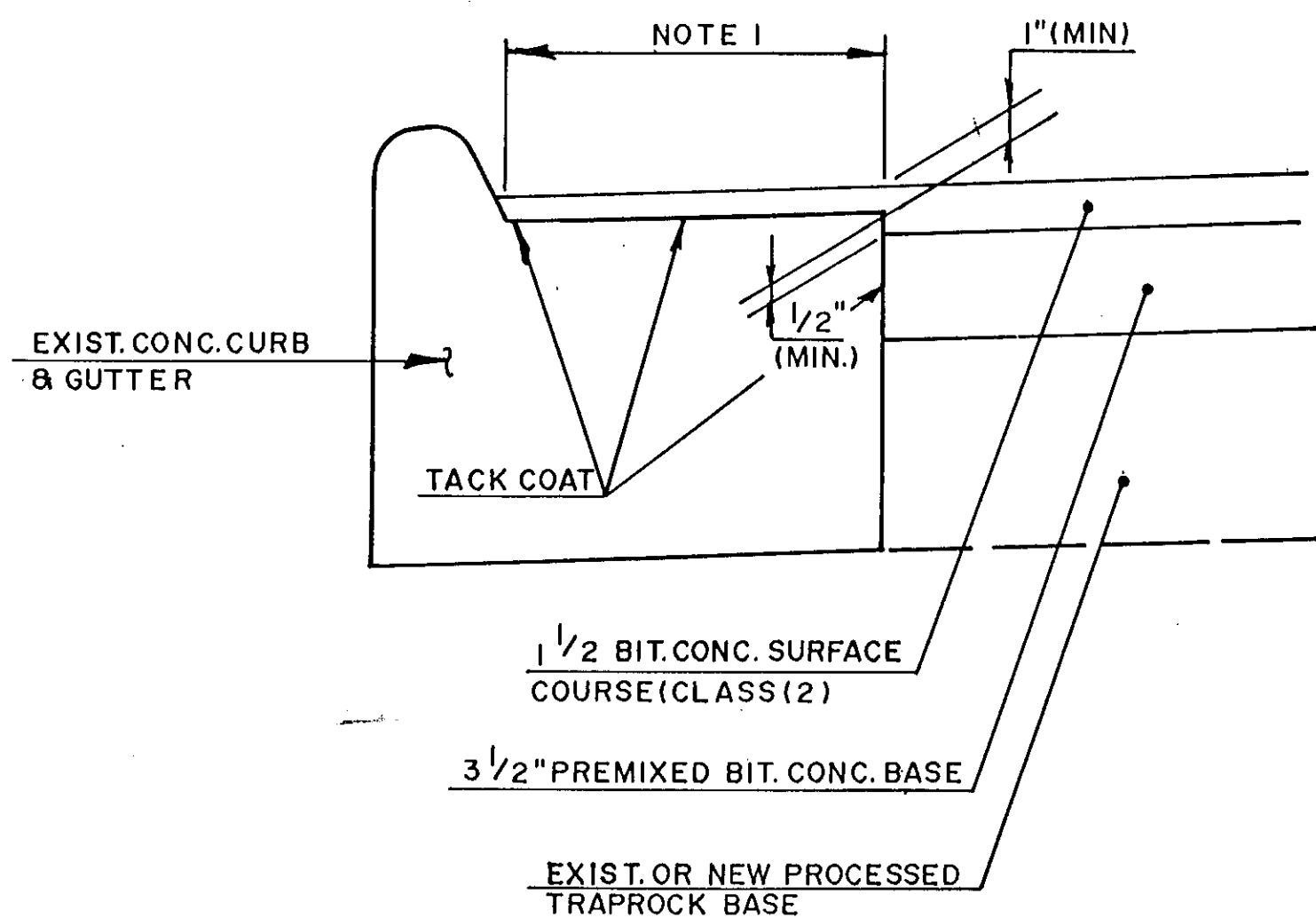
TYPICAL TREATMENT OF PERMANENT PAVEMENT REPLACEMENT



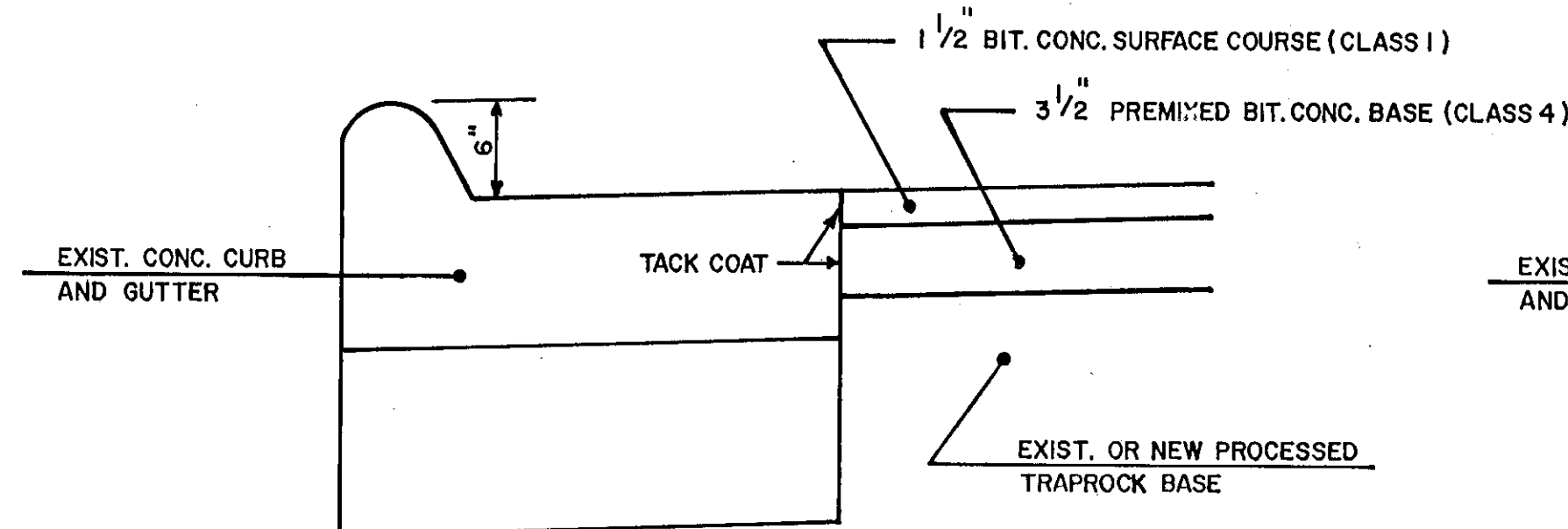
CURB UNDERDRAIN FOR BIT. CURB



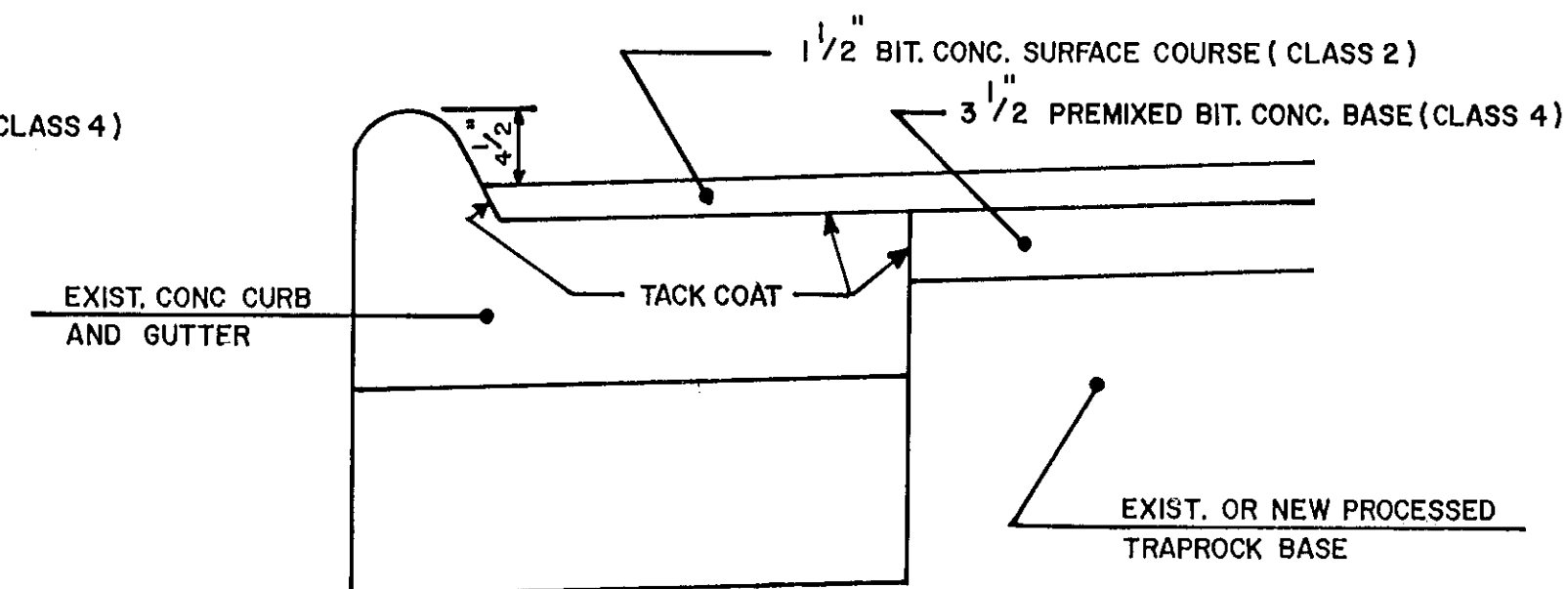
CURB UNDERDRAIN FOR GRANITE CURB



PAVING AT CONCRETE CURB & GUTTER



PAVING AT CONCRETE CURB AND GUTTER WITH 6\"/>



PAVING AT CONCRETE CURB AND GUTTER WITH 4 1/2\"/>

CONSTRUCTION NOTES

1. WHEN EXCAVATING CLOSE TO TREES, USE ONLY HAND TOOLS. CARE SHALL BE TAKEN TO ENSURE THAT TREE ROOTS ARE NOT DAMAGED IN ANY WAY. THE INSPECTOR SHALL BE NOTIFIED IMMEDIATELY WHENEVER TREE ROOTS ARE ENCOUNTERED. FURTHER EXCAVATING AT THAT LOCATION SHALL BE AS DIRECTED BY THE INSPECTOR.
2. CONTRACTOR SHALL INFORM UTILITY COMPANY OF REQUIRED POLE RELOCATION AND COORDINATE WORK WITH UTILITY COMPANY.
3. TOP OF CURB SHALL BE 6\"/>

NOTE 1. REMOVE EXISTING BIT. CONC. SURFACE, CLEAN ALL CRACKS AND JOINTS, FILL WITH CRACK SEALER PRIOR TO APPLICATION OF TACK COAT AND PLACEMENT OF BIT. CONC. WORK TO BE PAID UNDER BID ITEM 47C.

CITY OF HARTFORD, CONNECTICUT  
DEPARTMENT OF PUBLIC WORKS  
BUREAU OF ENGINEERING SERVICES

STANDARD DETAILS  
SHEET II

SHEET 5 OF 11	SUBMITTED		RECOMMENDED		APPROVED	
	DRAWN		SCALE		DAYBOOK NO.	
	CHECKED		NOT TO SCALE		DATE	
					NOVEMBER 1989	