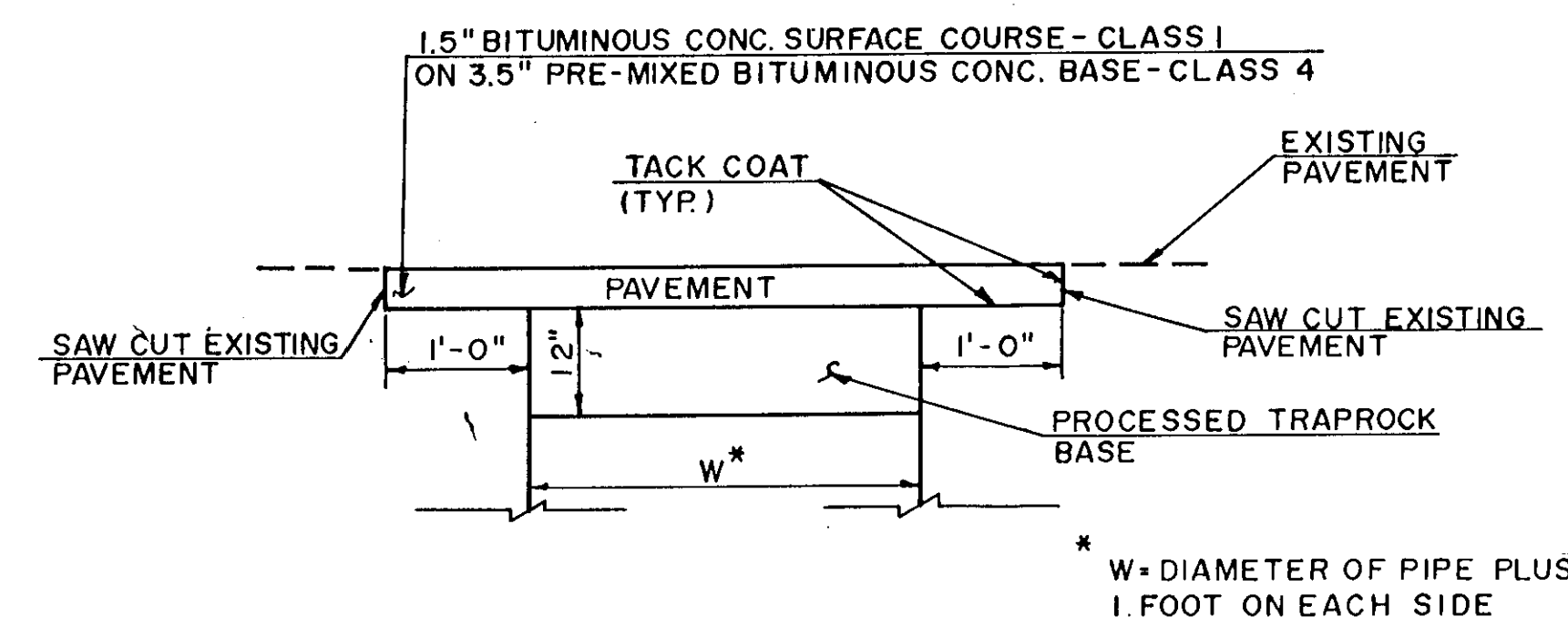
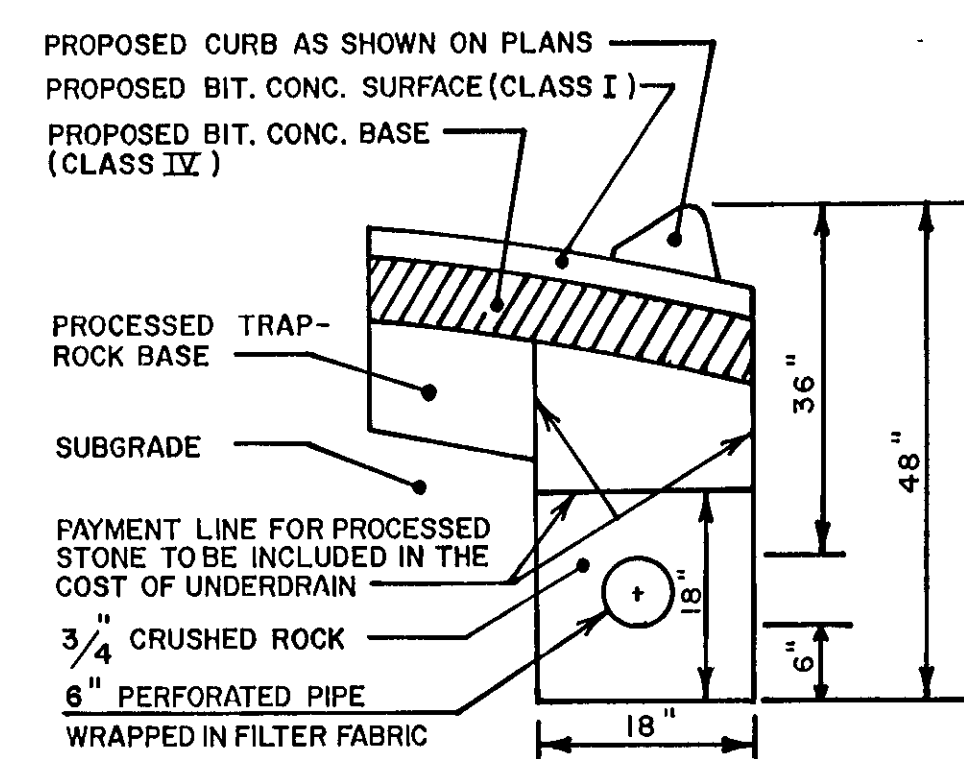


CLASS "A" CONCRETE  
POURED IN PLACE OR  
PRECAST CONCRETE

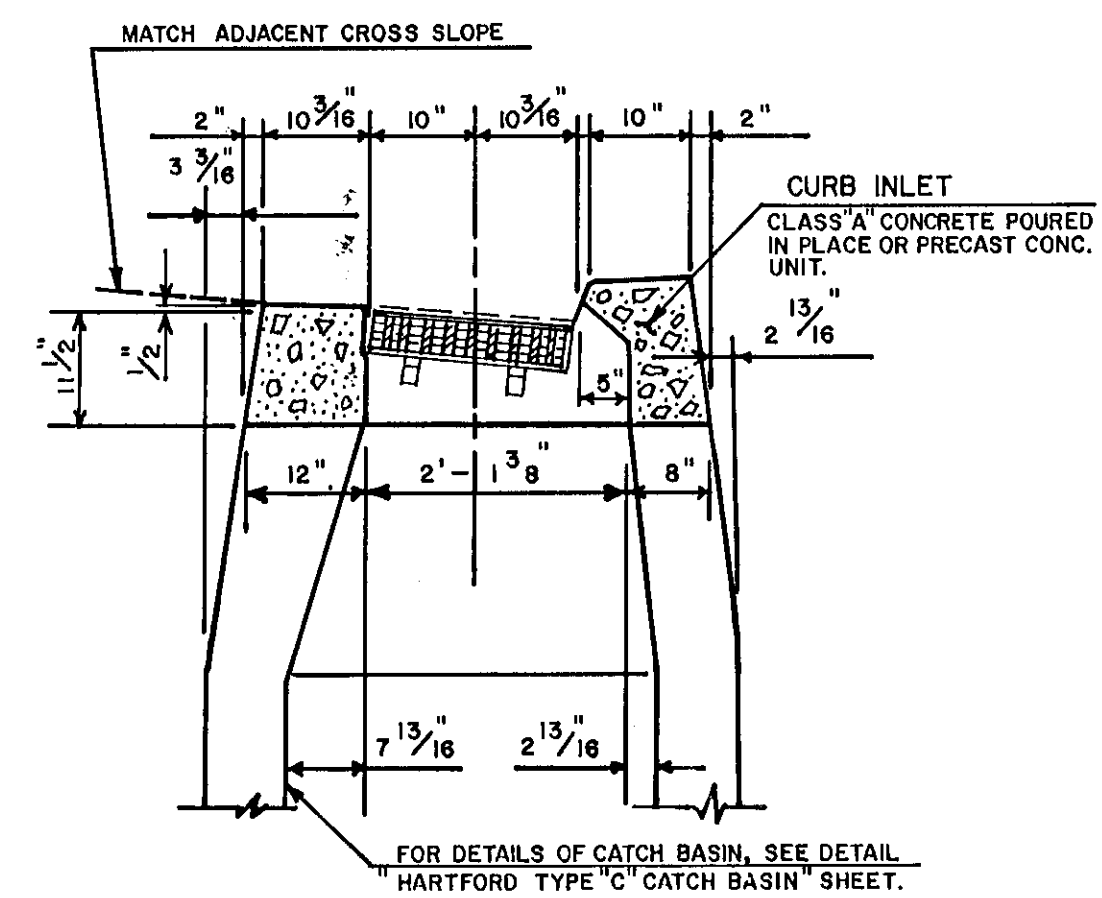
HARTFORD TYPE 'C-L' CATCH BASIN INLET



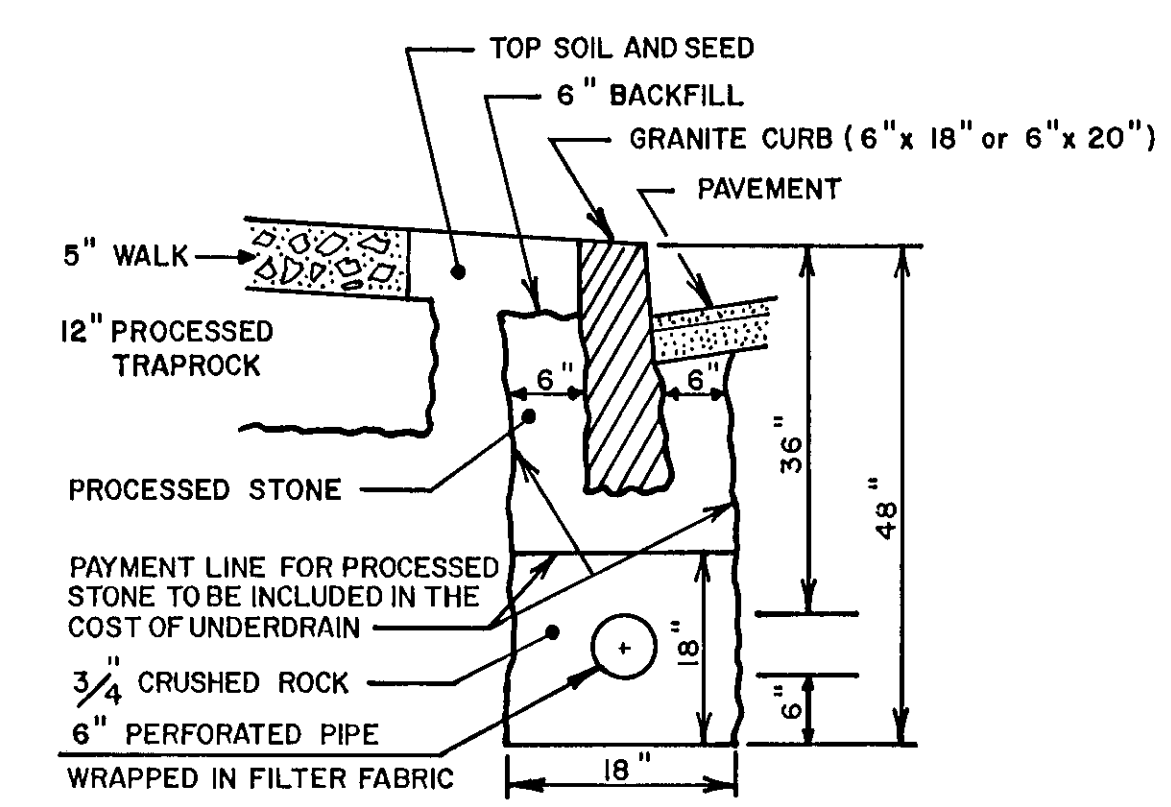
## TYPICAL TREATMENT OF PERMANENT PAVEMENT REPLACEMENT



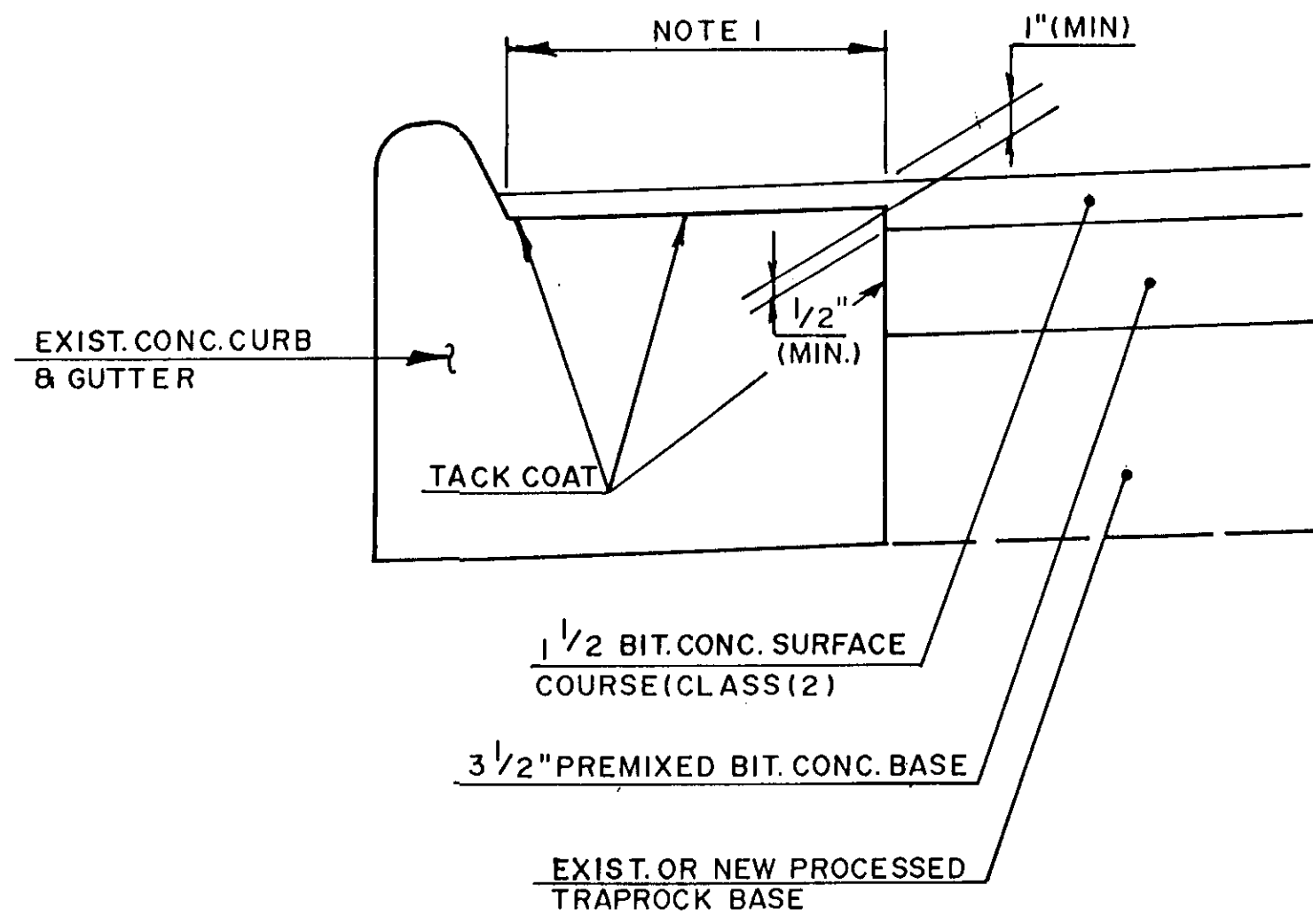
CURB	UNDERDRAIN
FOR	BIT. CURB



TYPE "C" CATCH BASIN

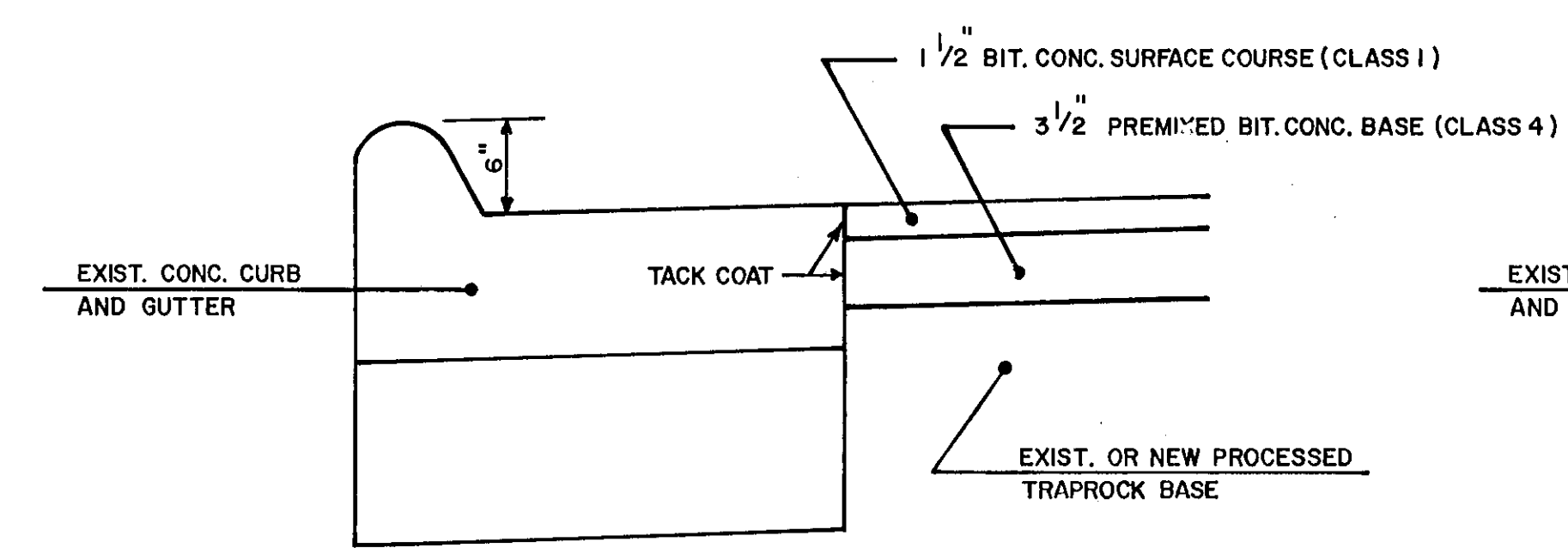


CURB UNDERDRAIN  
FOR GRANITE CURB

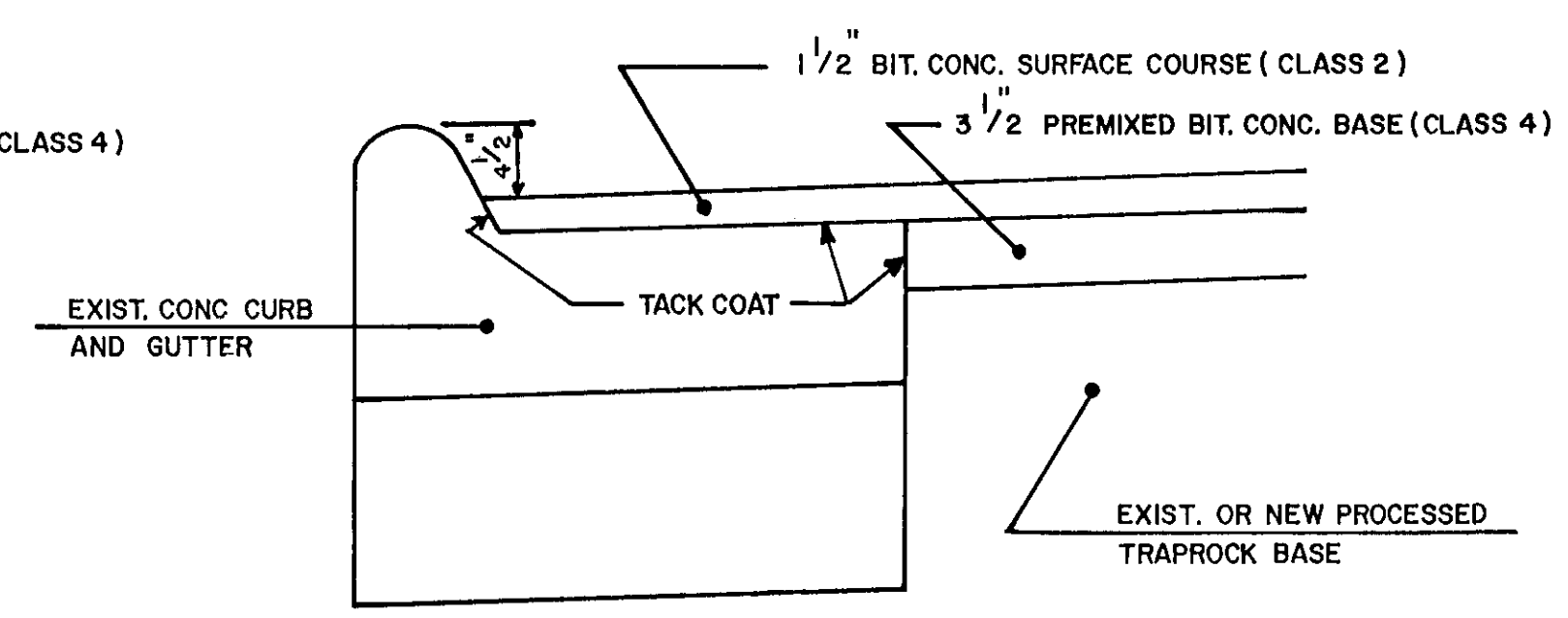


NOTE 1. REMOVE EXISTING BIT. CONC. SURFACE, CLEAN ALL CRACKS AND JOINTS, FILL WITH CRACK SEALER PRIOR TO APPLICATION OF TRACK COAT AND PLACEMENT OF BIT. CONC. WORK TO BE PAID UNDER BID ITEM 47C.

### PAVING AT CONCRETE CURB & GUTTER



### PAVING AT CONCRETE CURB AND GUTTER WITH 6" REVEAL



PAVING AT CONCRETE CURB AND GUTTER  
WITH 4 1/2" REVEAL

### CONSTRUCTION NOTES

1. WHEN EXCAVATING CLOSE TO TREES, USE ONLY HAND TOOLS. CARE SHALL BE TAKEN TO ENSURE THAT TREE ROOTS ARE NOT DAMAGED IN ANY WAY. THE INSPECTOR SHALL BE NOTIFIED IMMEDIATELY WHENEVER TREE ROOTS ARE ENCOUNTERED. FURTHER EXCAVATING AT THAT LOCATION SHALL BE AS DIRECTED BY THE INSPECTOR.
2. CONTRACTOR SHALL INFORM UTILITY COMPANY OF REQUIRED POLE RELOCATION AND COORDINATE WORK WITH UTILITY COMPANY.
3. TOP OF CURB SHALL BE 6" ABOVE GUTTER GRADE UNLESS OTHERWISE NOTED.

<b>CITY OF HARTFORD, CONNECTICUT</b> <b>DEPARTMENT OF PUBLIC WORKS</b> <b>BUREAU OF ENGINEERING SERVICES</b>		
<b>STANDARD DETAILS</b>  <b>SHEET II</b>		
SUBMITTED _____	RECOMMENDED _____	APPROVED _____
_____ DIVISION MANAGER		_____ CITY ENGINEER, ESB
DRAWN _____ CHECKED _____	SCALE <b>NOT TO SCALE</b>	DAYBOOK NO. DATE