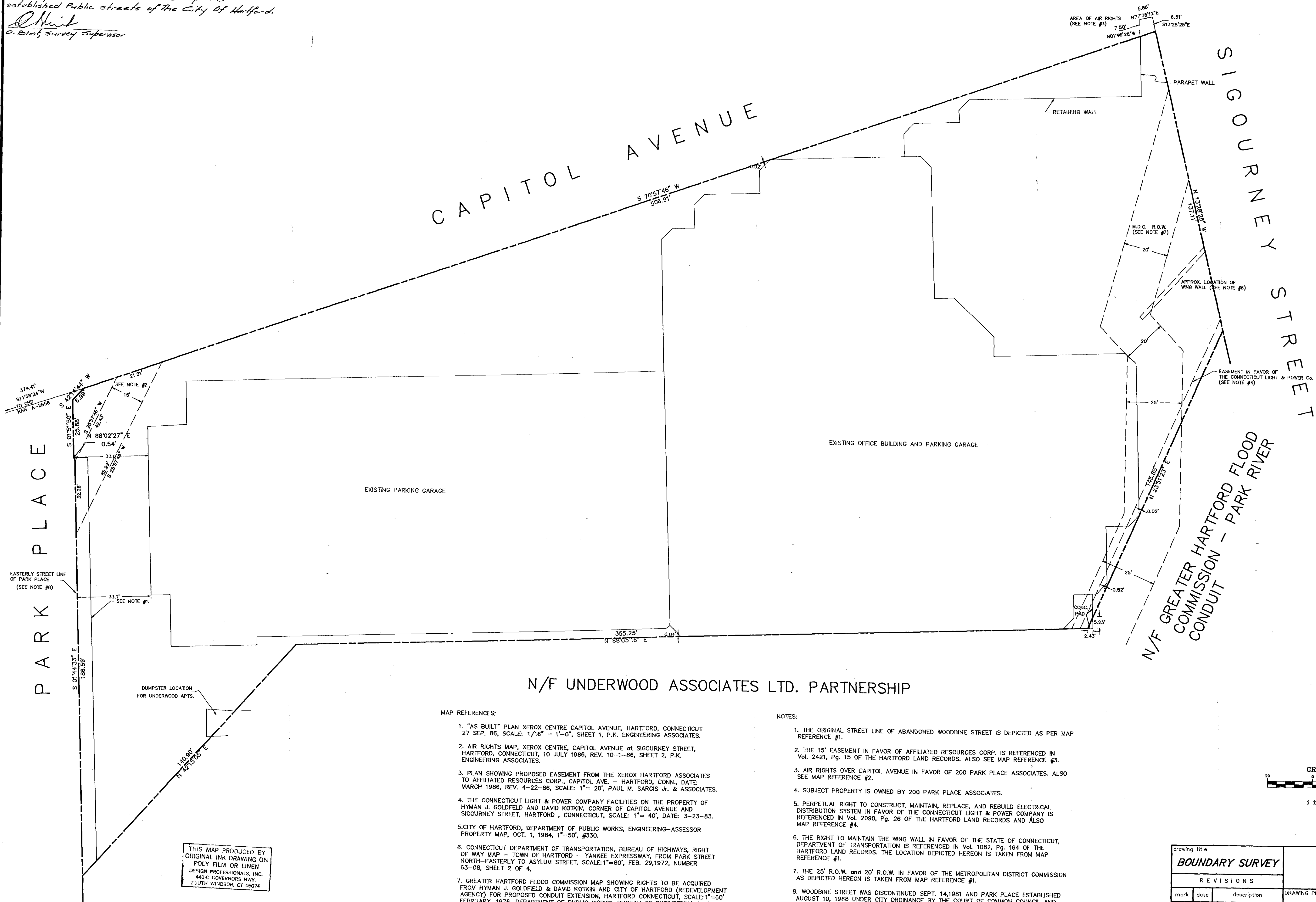


The portions of Sigourney street, Park Place and Capitol Avenue shown on this map are established public streets of the City of Hartford.

*D. Blint*  
D. Blint, Survey Supervisor



N/F UNDERWOOD ASSOCIATES LTD. PARTNERSHIP

#### MAP REFERENCES:

1. "AS BUILT" PLAN XEROX CENTRE CAPITOL AVENUE, HARTFORD, CONNECTICUT 27 SEP. 86, SCALE: 1/16" = 1'-0", SHEET 1, P.K. ENGINEERING ASSOCIATES.
2. AIR RIGHTS MAP, XEROX CENTRE, CAPITOL AVENUE at SIGOURNEY STREET, HARTFORD, CONNECTICUT, 10 JULY 1986, REV. 10-1-86, SHEET 2, P.K. ENGINEERING ASSOCIATES.
3. PLAN SHOWING PROPOSED EASEMENT FROM THE XEROX HARTFORD ASSOCIATES TO AFFILIATED RESOURCES CORP., CAPITOL AVE. - HARTFORD, CONN., DATE: MARCH 1986, REV. 4-22-86, SCALE: 1"= 20', PAUL M. SARGIS JR. & ASSOCIATES.
4. THE CONNECTICUT LIGHT & POWER COMPANY FACILITIES ON THE PROPERTY OF HYMAN J. GOLDFELD AND DAVID KOTKIN, CORNER OF CAPITOL AVENUE AND SIGOURNEY STREET, HARTFORD, CONNECTICUT, SCALE: 1"= 40', DATE: 3-23-83.
5. CITY OF HARTFORD, DEPARTMENT OF PUBLIC WORKS, ENGINEERING-ASSESSOR PROPERTY MAP, OCT. 1, 1984, 1"=50', #330.
6. CONNECTICUT DEPARTMENT OF TRANSPORTATION, BUREAU OF HIGHWAYS, RIGHT OF WAY MAP - TOWN OF HARTFORD - YANKEE EXPRESSWAY, FROM PARK STREET NORTH-EASTERLY TO ASYLUM STREET, SCALE: 1"=80', FEB. 29, 1972, NUMBER 63-08, SHEET 2 OF 4.
7. GREATER HARTFORD FLOOD COMMISSION MAP SHOWING RIGHTS TO BE ACQUIRED FROM HYMAN J. GOLDFELD & DAVID KOTKIN AND CITY OF HARTFORD (REDEVELOPMENT AGENCY) FOR PROPOSED CONDUIT EXTENSION, HARTFORD, CONNECTICUT, SCALE: 1"=60' FEBRUARY, 1976, DEPARTMENT OF PUBLIC WORKS, BUREAU OF ENGINEERING SERVICES.
8. CITY OF HARTFORD, TOPOGRAPHIC MAP, PROPERTY OF HYMAN J. GOLDFELD & DAVID KOTKIN (FORMERLY UNDERWOOD SITE) 1"=40', AUGUST 17, 1982, REV. 3-3-83 C.E. MAGUIRE, INC.

#### NOTES:

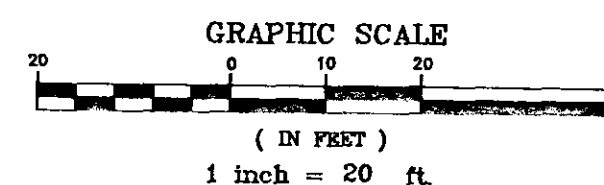
1. THE ORIGINAL STREET LINE OF ABANDONED WOODBINE STREET IS DEPICTED AS PER MAP REFERENCE #1.
2. THE 15' EASEMENT IN FAVOR OF AFFILIATED RESOURCES CORP. IS REFERENCED IN Vol. 2421, Pg. 15 OF THE HARTFORD LAND RECORDS. ALSO SEE MAP REFERENCE #3.
3. AIR RIGHTS OVER CAPITOL AVENUE IN FAVOR OF 200 PARK PLACE ASSOCIATES. ALSO SEE MAP REFERENCE #2.
4. SUBJECT PROPERTY IS OWNED BY 200 PARK PLACE ASSOCIATES.
5. PERPETUAL RIGHT TO CONSTRUCT, MAINTAIN, REPLACE, AND REBUILD ELECTRICAL DISTRIBUTION SYSTEM IN FAVOR OF THE CONNECTICUT LIGHT & POWER COMPANY IS REFERENCED IN Vol. 2090, Pg. 26 OF THE HARTFORD LAND RECORDS AND ALSO MAP REFERENCE #4.
6. THE RIGHT TO MAINTAIN THE WING WALL IN FAVOR OF THE STATE OF CONNECTICUT, DEPARTMENT OF TRANSPORTATION IS REFERENCED IN Vol. 1082, Pg. 164 OF THE HARTFORD LAND RECORDS. THE LOCATION DEPICTED HEREON IS TAKEN FROM MAP REFERENCE #1.
7. THE 25' R.O.W. AND 20' R.O.W. IN FAVOR OF THE METROPOLITAN DISTRICT COMMISSION AS DEPICTED HEREON IS TAKEN FROM MAP REFERENCE #1.
8. WOODBINE STREET WAS DISCONTINUED SEPT. 14, 1981 AND PARK PLACE ESTABLISHED AUGUST 10, 1988 UNDER CITY ORDINANCE BY THE COURT OF COMMON COUNCIL AND ADOPTED OCT. 10, 1989. ALSO SEE MAP REFERENCE #5 - "COINCIDENT STREET AND BUILDING LINES OF OCT. 12, 1989, Vol. 8-156."
9. AREA OF THE PROPERTY = 99,305 Sq. Ft. = 2.27 Ac.
10. THIS MAP CONFORMS TO A-2 STANDARD OF HORIZONTAL ACCURACY AS DEFINED IN THE RECOMMENDED STANDARDS FOR SURVEYS AND MAPS IN THE STATE OF CONNECTICUT, EFFECTIVE JANUARY 1, 1993 AS PREPARED AND ADOPTED BY THE CONNECTICUT ASSOCIATION OF LAND SURVEYORS, INC., SEPTEMBER 24, 1992.

THIS MAP PRODUCED BY  
ORIGINAL INK DRAWING ON  
POLY FILM OR LINEN  
DESIGN PROFESSIONALS, INC.  
441-C GOVERNORS HWY.  
SOUTH WINDSOR, CT 06074

TO THE BEST OF MY KNOWLEDGE AND BELIEF THIS MAP IS SUBSTANTIALLY  
CORRECT AS NOTED HEREON.

*Richard P. Martel*  
RICHARD P. MARTEL

12882  
Lic. No.



drawing title			STATE OF CONNECTICUT DEPARTMENT OF PUBLIC WORKS		
BOUNDARY SURVEY			REVISIONS		
mark	date	description	DRAWING PREPARED BY		
			design professionals, inc.		
			441-C Governors Highway, South Windsor, Connecticut 06074		
			project		
			INDEPENDENT RESURVEY		
			DPW PROJECT No. BI-2B-877		
			200 PARK PLACE		
			HARTFORD, CONNECTICUT		
			project no.		
			BI-2B-877		
			date		
			9-6-94		
			scale		
			1"=20'		
			drawn by		
			RPM		
			approved by		
			drawing no.		
			1 OF 1		
CAD no.			C:\JOB\94772.DWG		