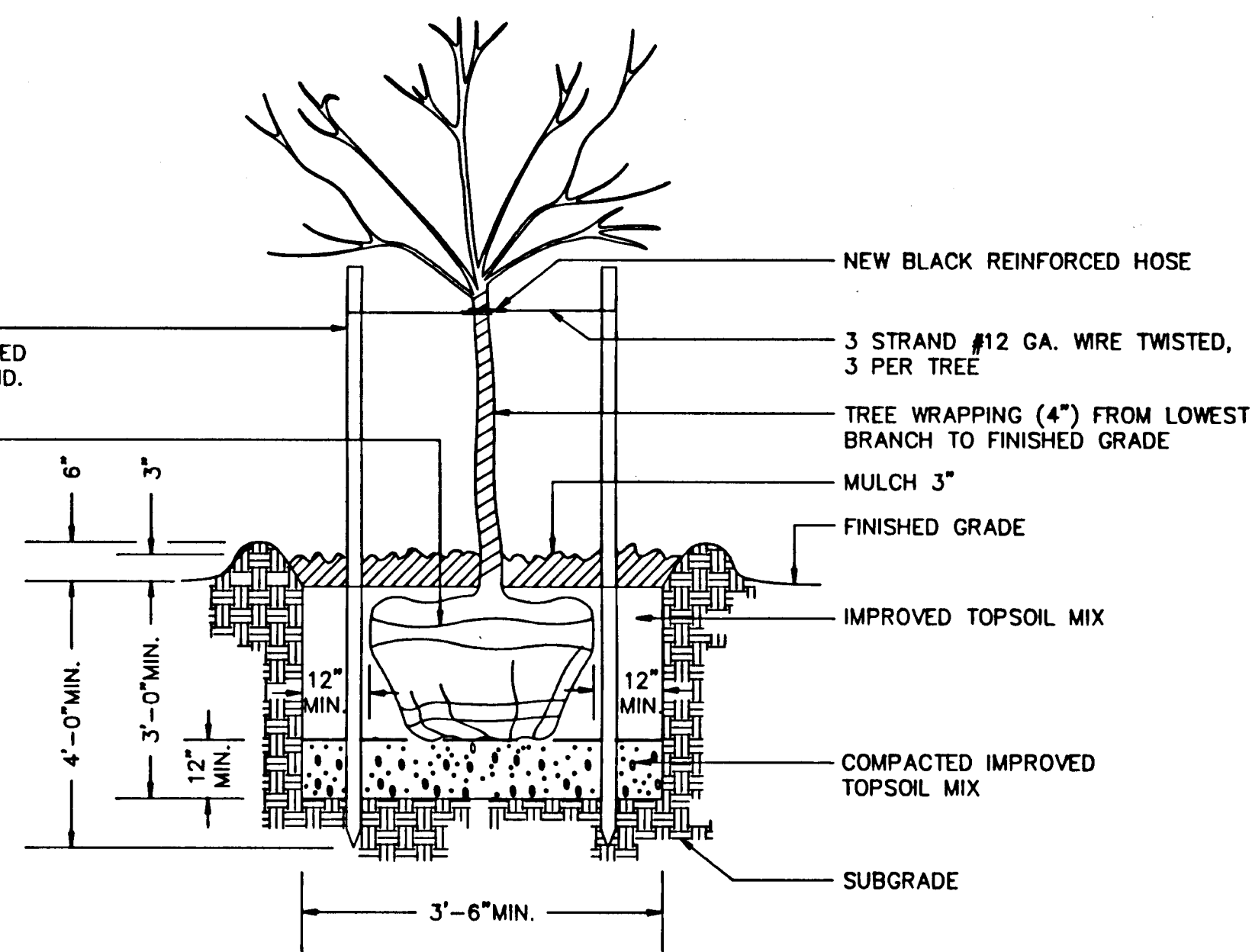
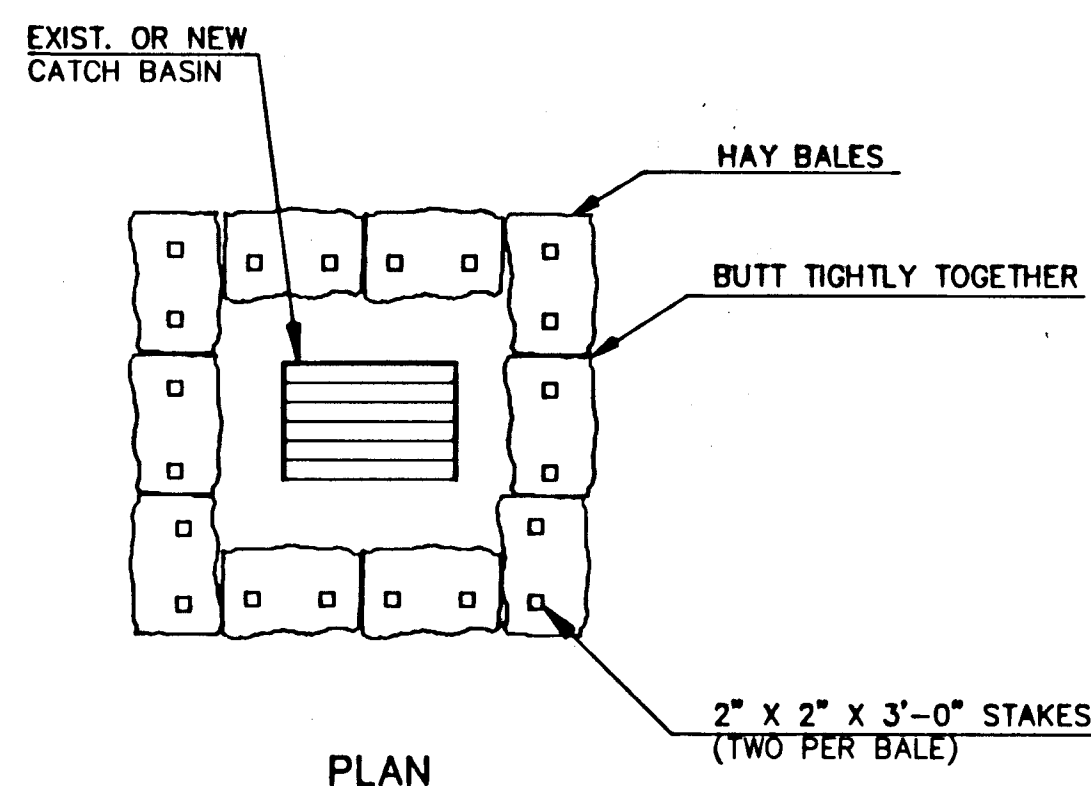


3 1/2" DIA. CEDAR STAKES
EXTENDED 6'-0" ABOVE FINISHED
GRADE AND 4'-0" INTO GROUND.
3 PER TREE

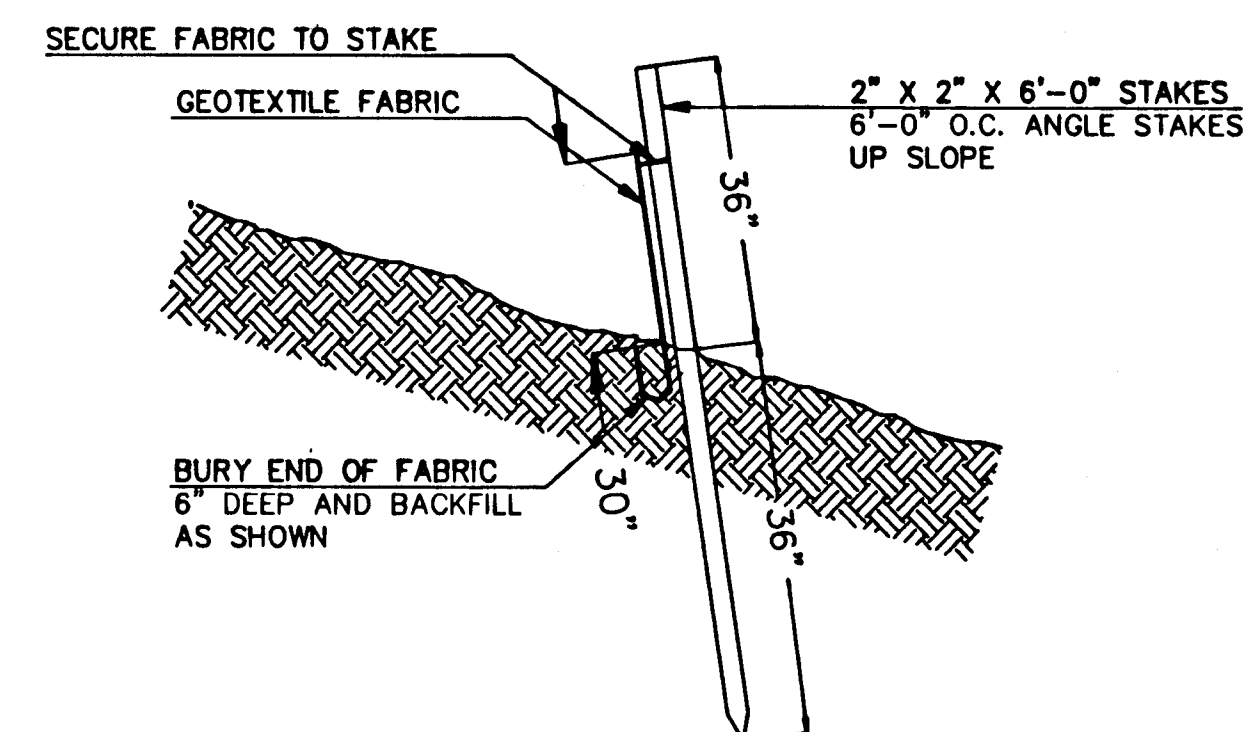
CUT TWINE AND PEEL BACK
BURLAP TO EXPOSE TOP
OF ROOTBALL



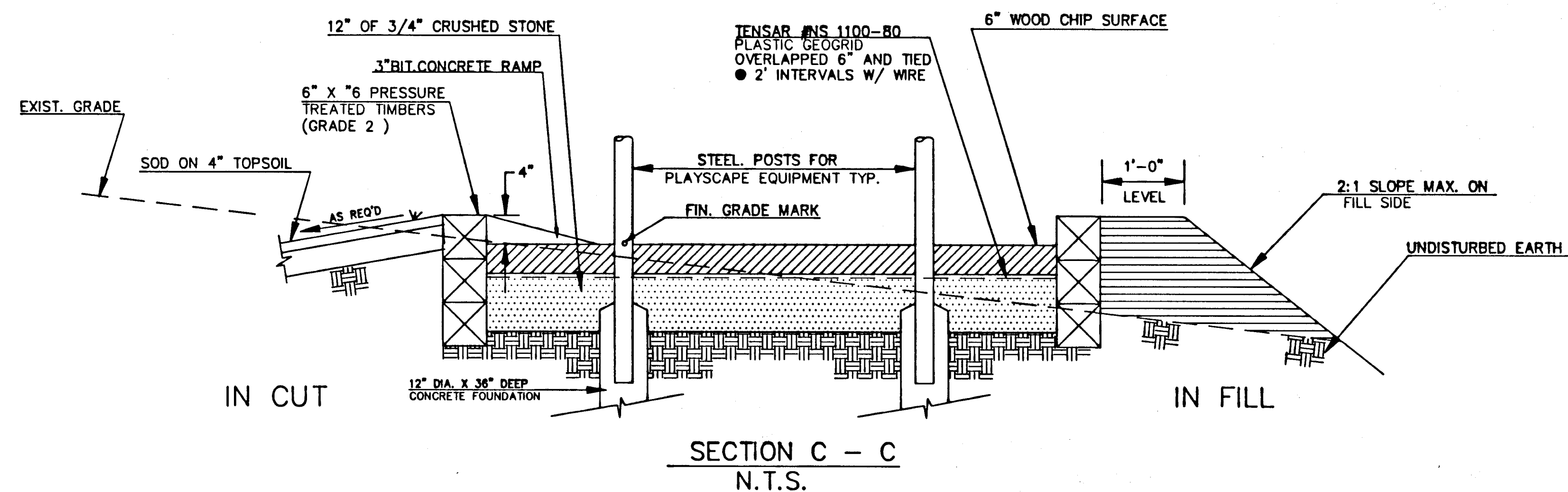
DECIDUOUS TREE PLANTING
N.T.S.



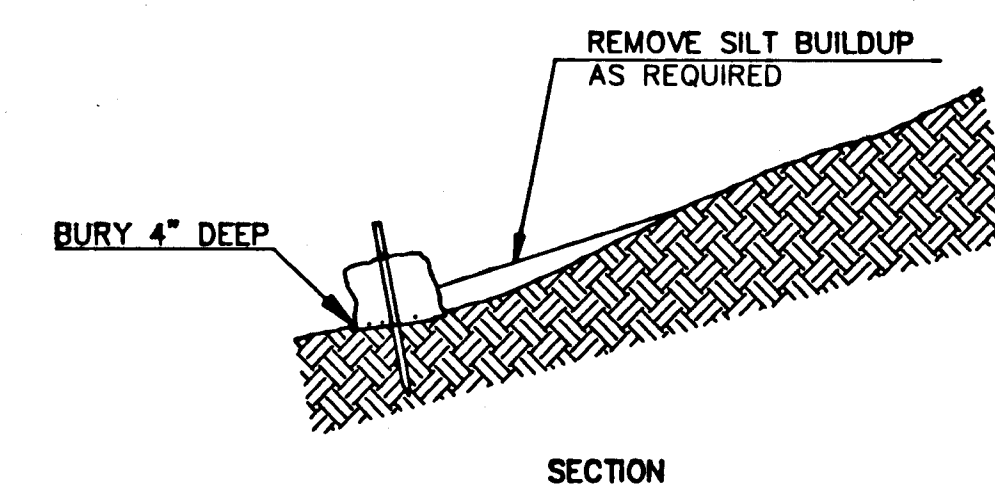
PLAN



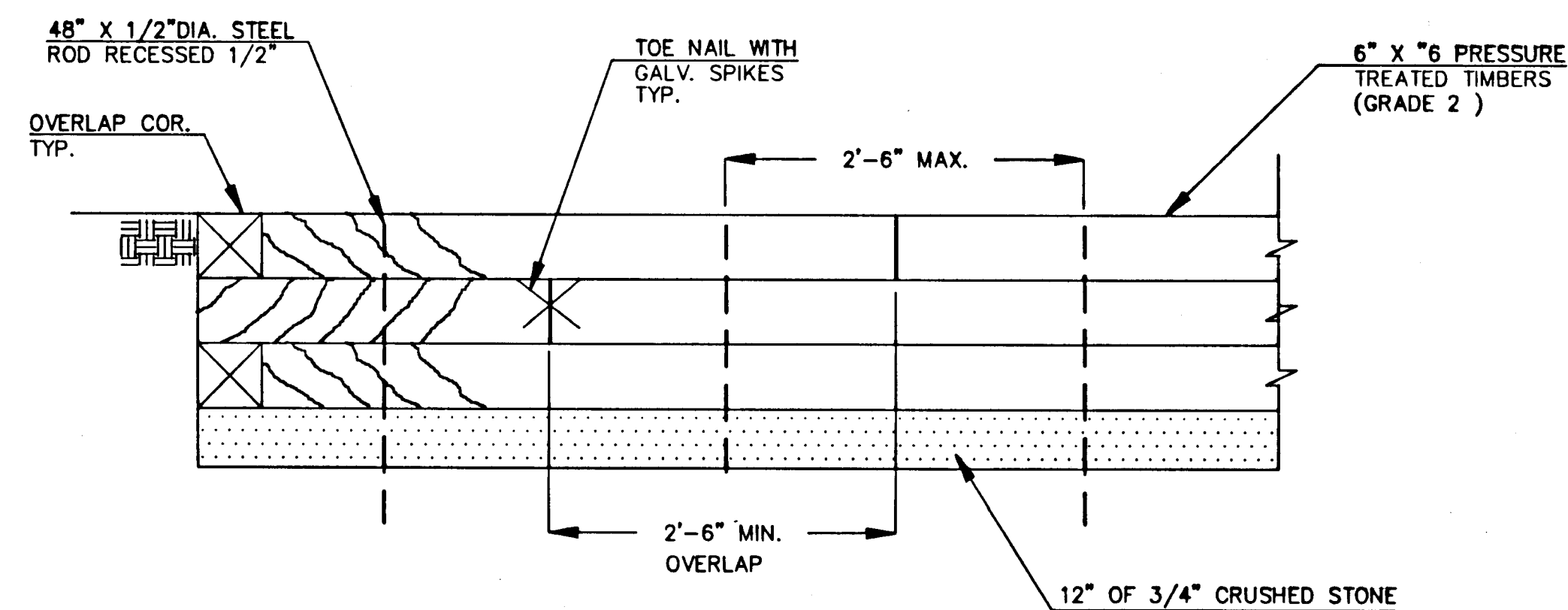
SILT FENCE DETAIL
N.T.S.



SECTION C - C
N.T.S.



SECTION



FRONT VIEW OF TIMBER BORDER
N.T.S.

HAY BALE DAM
N.T.S.

REVISED JULY 1993

CITY OF HARTFORD, CONNECTICUT
DEPARTMENT OF PUBLIC WORKS
ENGINEERING SERVICES

MISCELLANEOUS DETAILS FOR
INSTALLATION OF PLAYScape
EQUIPMENT AND SITE LANDSCAPING
AT CHARTER OAK TERRACE PLAYGROUND

| | | |
|------------------|--------------------|-------------------|
| SUBMITTED | RECOMMENDED | APPROVED |
| PROJECT ENGINEER | MANAGER | CITY ENGINEER |
| DRAWN LAL | SCALE NONE | DAYBOOK NO. 01335 |
| CHECKED JLB | DATE DECEMBER 1991 | FILE NAME TREES |
| | | SHEET 5 OF 5 |