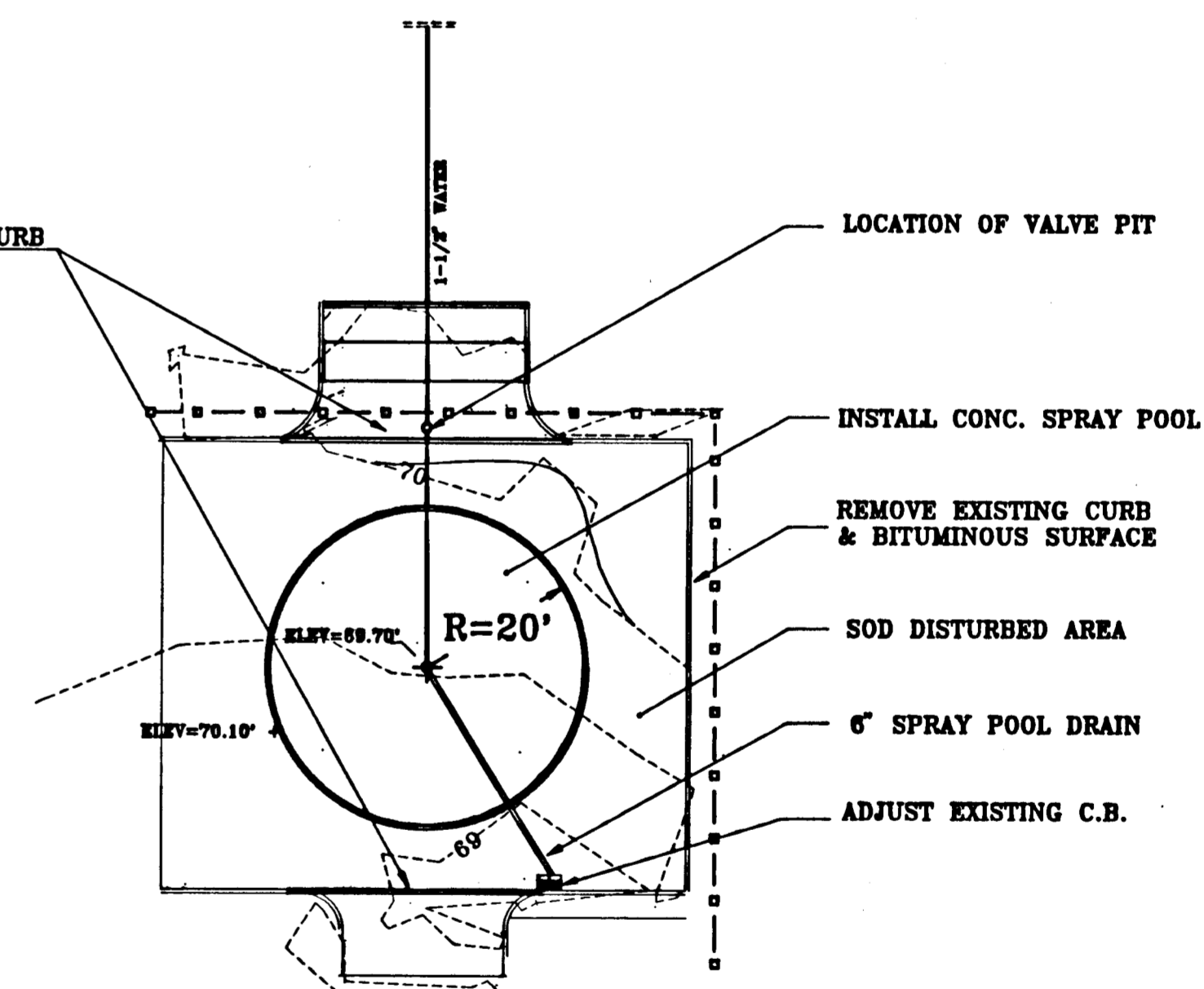


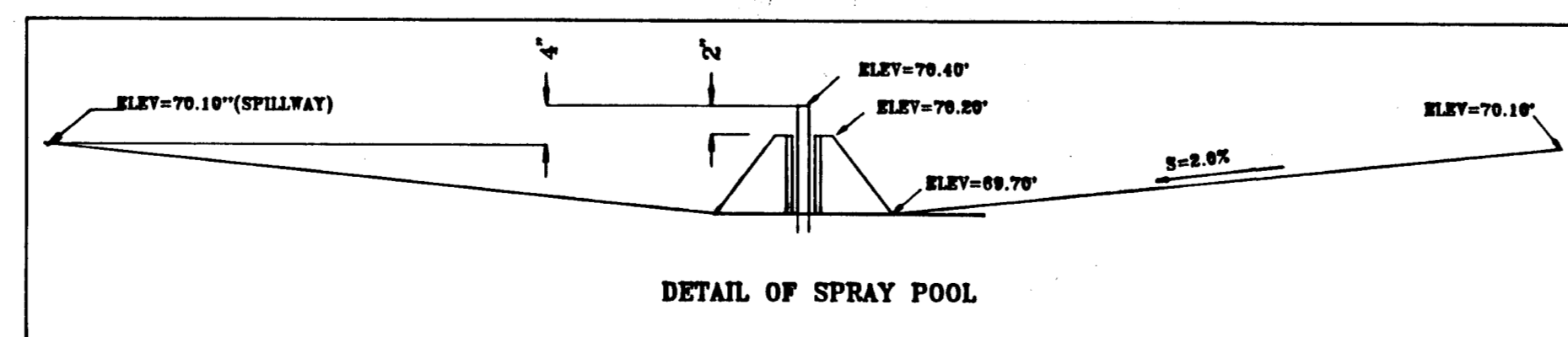
GENERAL NOTES

- 1 ELEVATIONS ARE BASED ON METROPOLITAN DISTRICT COMMISSION (MDC) DATUM
- 2 RIM OR FRAME ELEVATIONS OF ALL UTILITY GATE BOXES, HANDHOLES, MANHOLES AND CATCH BASINS ARE TO BE ADJUSTED AS REQUIRED TO MATCH PROPOSED FINISHED PAVED SURFACES
- 3 CALL BEFORE YOU DIG - THE CONTRACTOR IS HEREBY REMINDED THAT PURSUANT TO PUBLIC ACT 87-71 REQUIRES NOTIFICATION TO UTILITY COMPANIES OF PENDING EXCAVATION AT OR NEAR THE LOCATION OF PUBLIC UTILITIES. THE CONTRACTOR SHALL CALL THIS NUMBER 1-800-922-4455 AT LEAST 48 HOURS, EXCLUDING SATURDAYS, SUNDAYS AND HOLIDAYS, BUT NOT MORE THAN THIRTY DAYS (ONE MONTH) PRIOR TO EXCAVATION

INSTALL NEW STRAIGHT GRANITE CURB



OPTION # 2 PLAN VIEW



PROPOSED CONTOUR
EXISTING CONTOUR

CITY OF HARTFORD, CONNECTICUT
DEPARTMENT OF PUBLIC WORKS
ENGINEERING SERVICES

CONSTRUCTION OF
PLAYSCAPE AND SPRAY POOL
AT CHARTER OAK TERRACE

SUBMITTED	RECOMMENDED	APPROVED
PROJECT ENGINEER	MANAGER	CITY ENGINEER
DRAWN MK.	SCALE: 1"=20'	DAYBOOK NO. 01335
CHECKED MK.	DATE JUN 11, 1995	FILE NAME 95-06CK1.DWG
		SHEET 1 OF 5