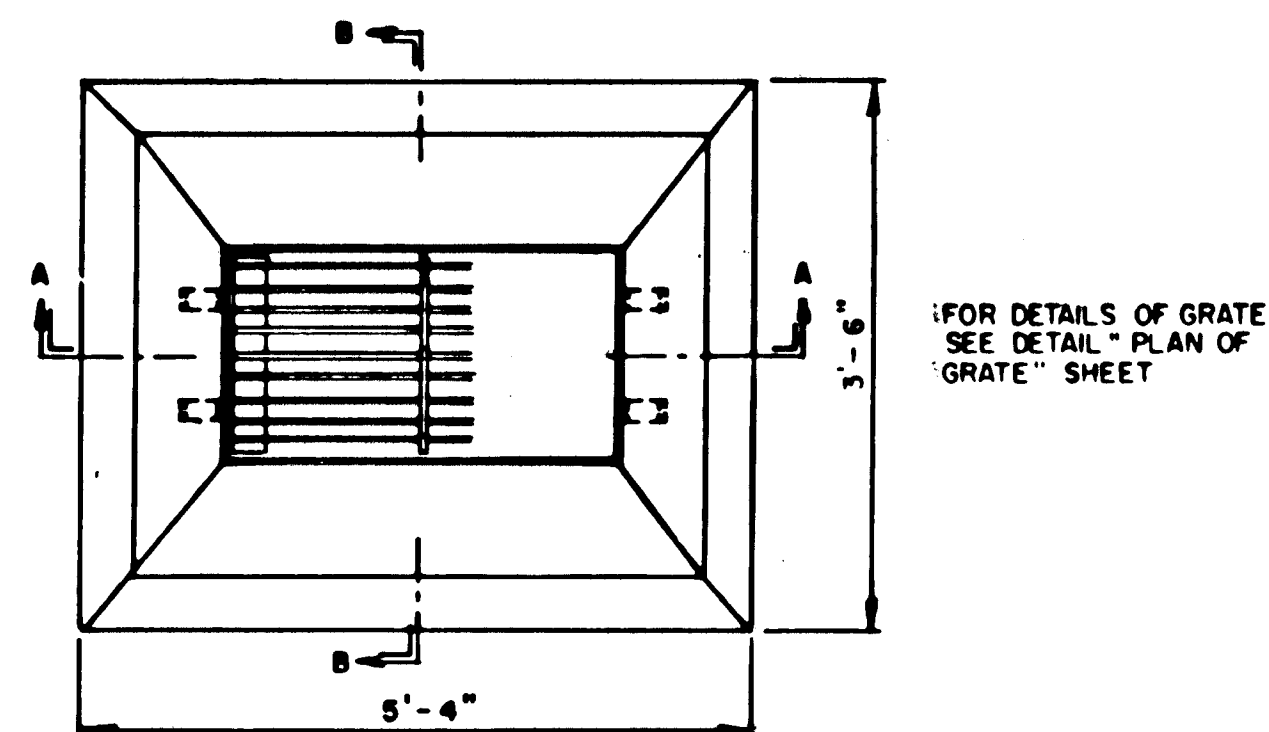
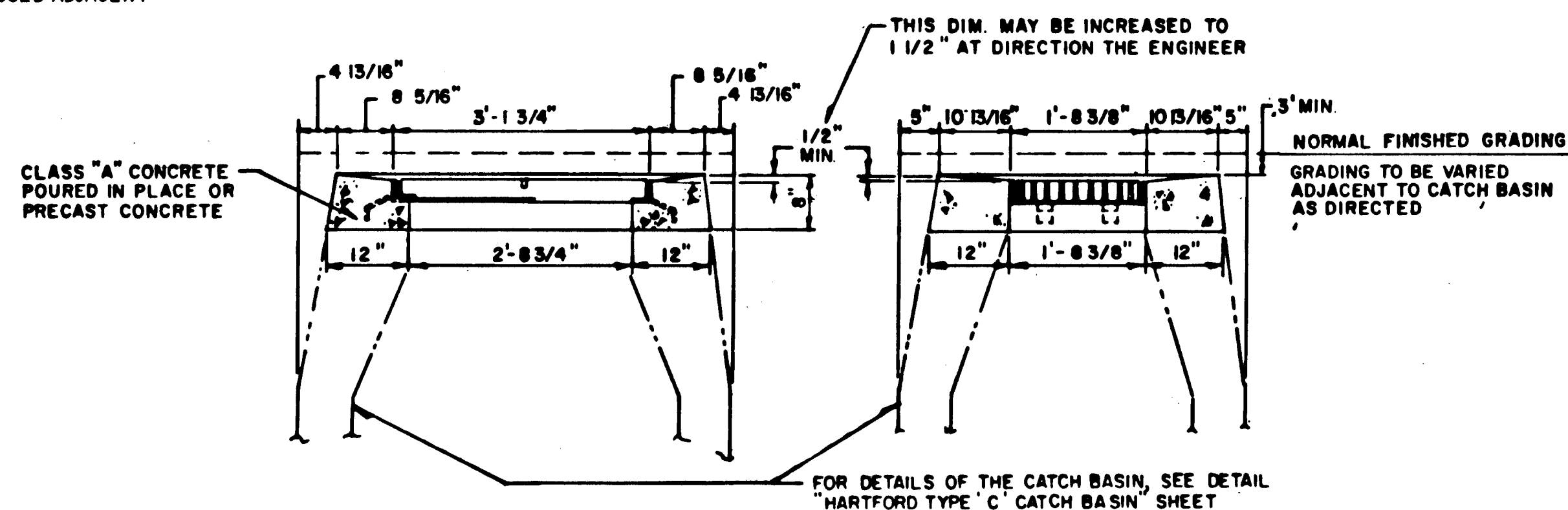


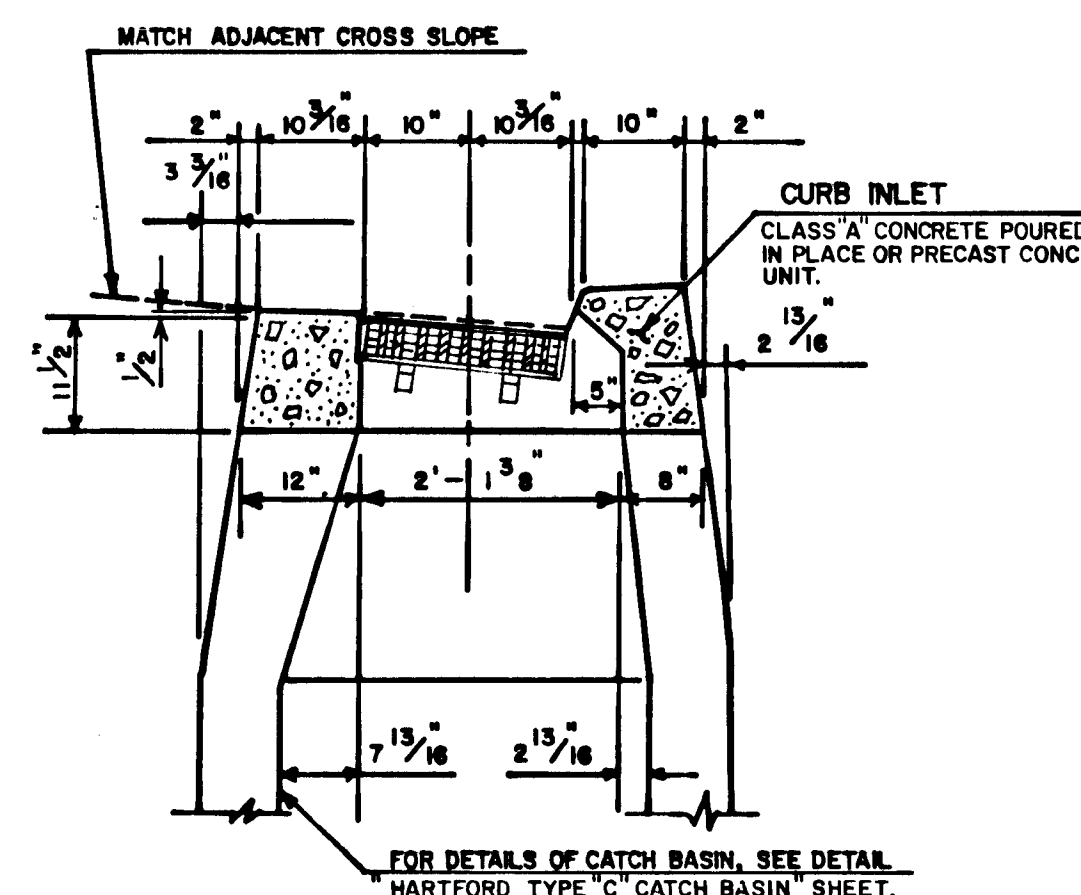
CITY MERESTONE



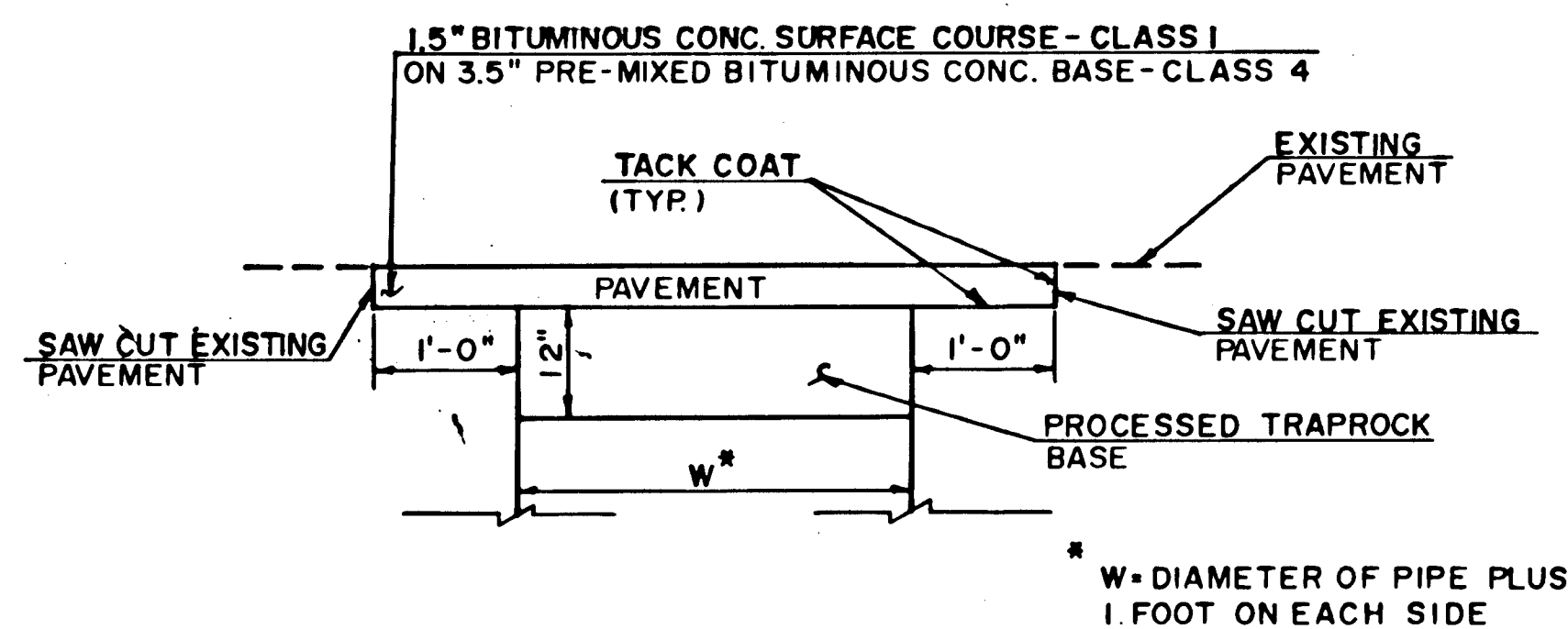
FOR DETAILS OF GRATE
SEE DETAIL " PLAN OF
" GRATE " SHEET



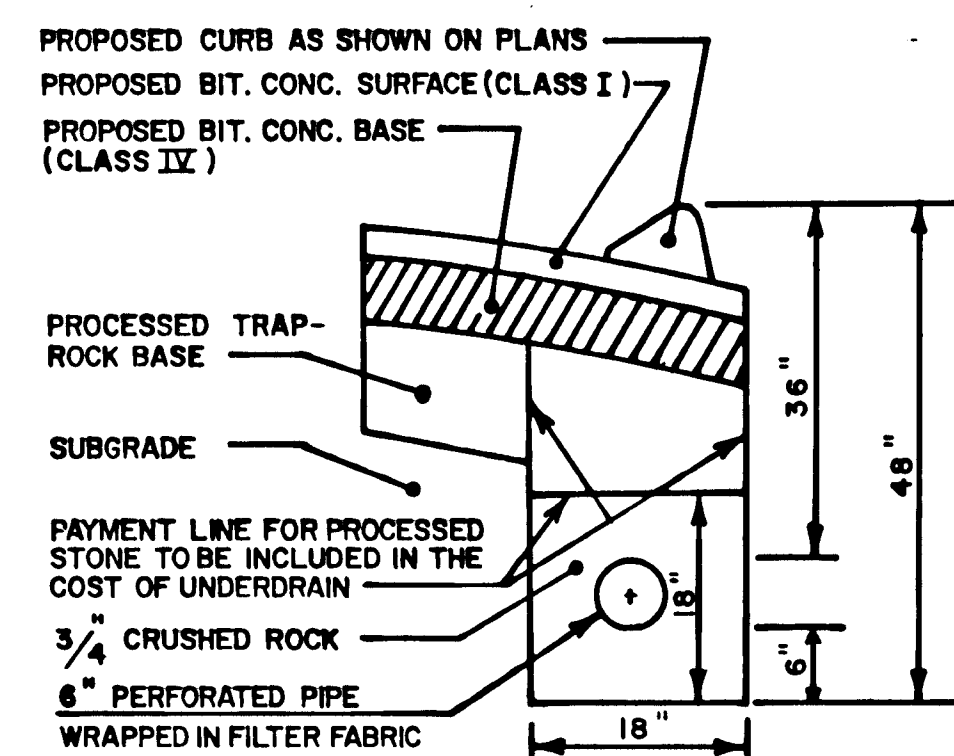
HARTFORD TYPE 'C-L' CATCH BASIN INLET



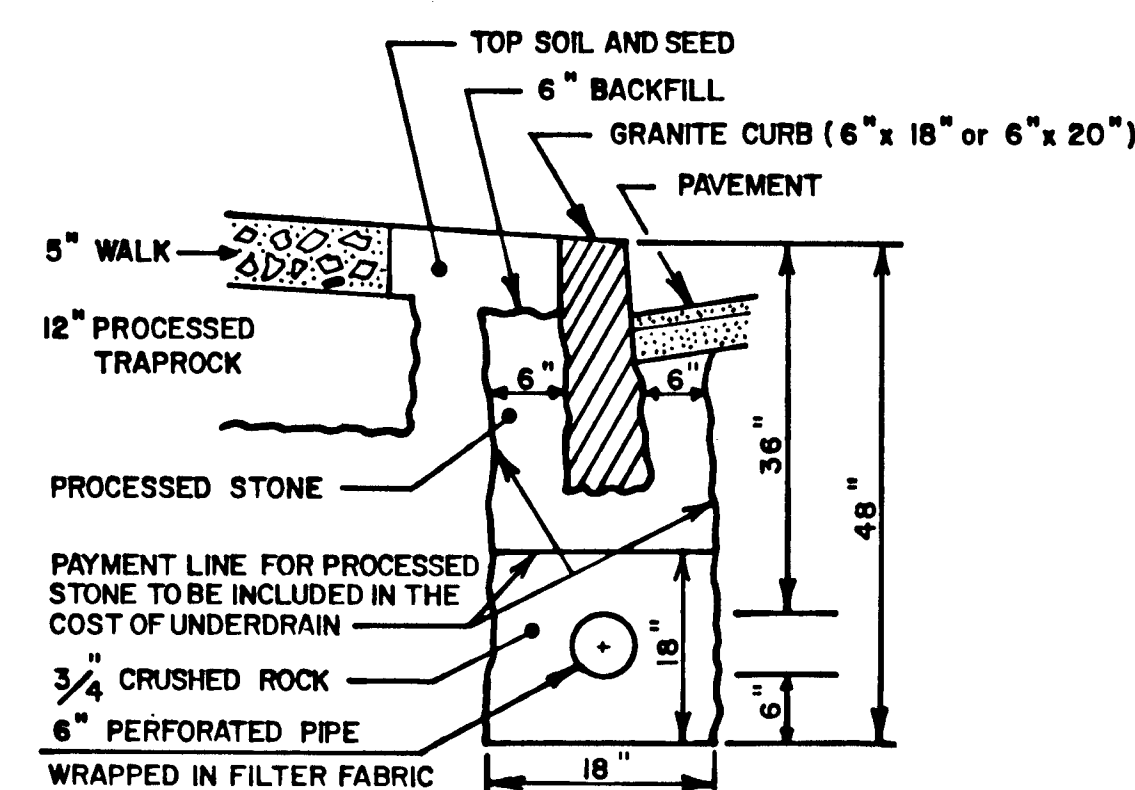
TYPE "C" CATCH BASIN



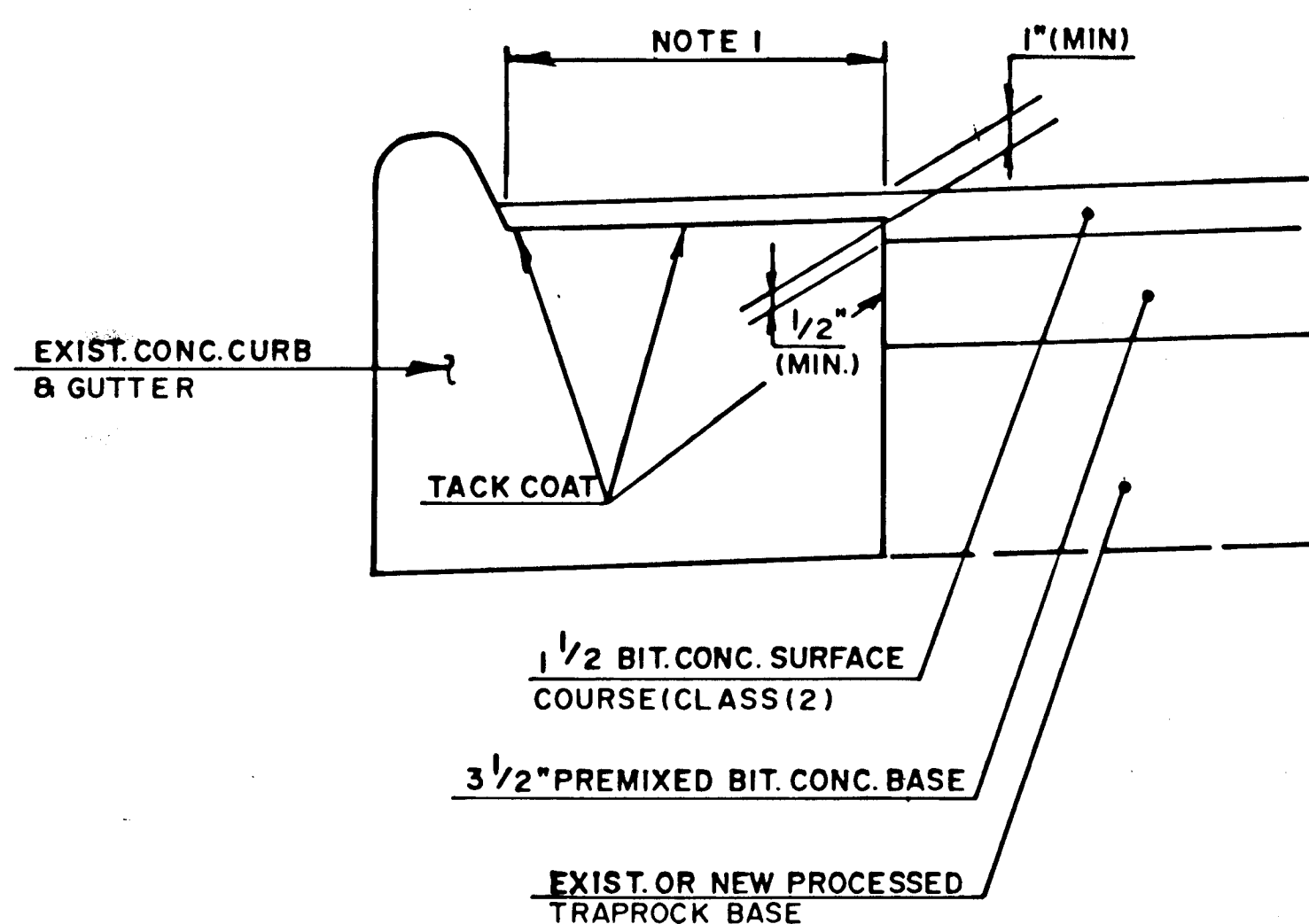
TYPICAL TREATMENT OF PERMANENT PAVEMENT REPLACEMENT



CURB	UNDERDRAIN
FOR	BIT. CURB

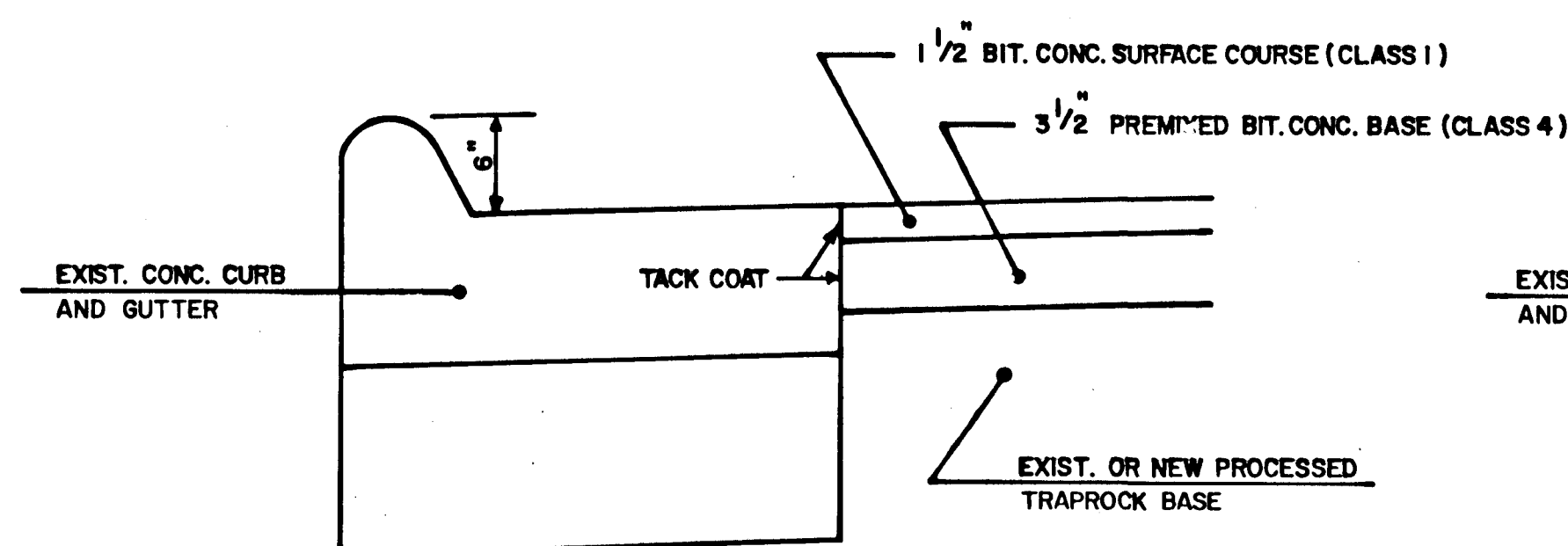


CURB UNDERDRAIN
FOR GRANITE CURB

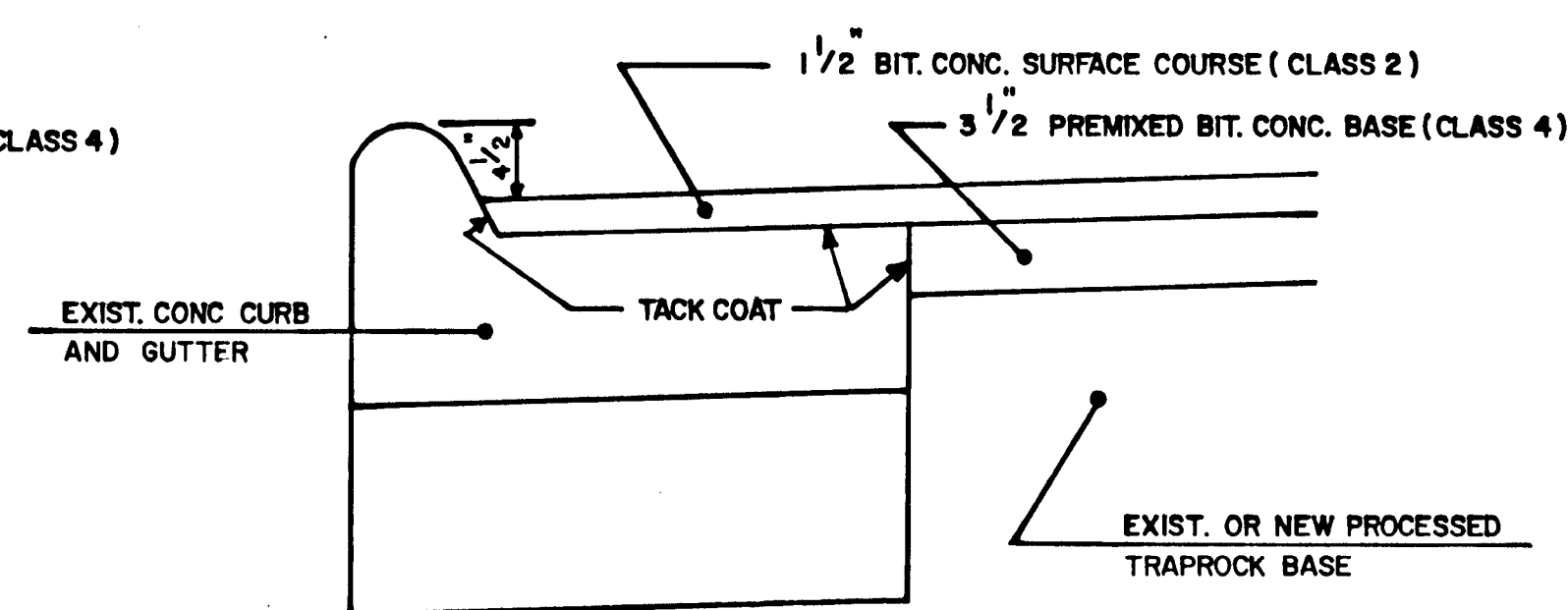


PAVING AT CONCRETE CURB & GUTTER

NOTE 1. REMOVE EXISTING BIT. CONC. SURFACE, CLEAN ALL CRACKS AND JOINTS, FILL WITH CRACK SEALER PRIOR TO APPLICATION OF TRACK COAT AND PLACEMENT OF BIT. CONC. WORK TO BE PAID UNDER BID ITEM 47C.



PAVING AT CONCRETE CURB AND GUTTER WITH 6" REVEAL



PAVING AT CONCRETE CURB AND GUTTER WITH 4 1/2" REVEAL

CONSTRUCTION NOTES

1. WHEN EXCAVATING CLOSE TO TREES, USE ONLY HAND TOOLS. CARE SHALL BE TAKEN TO ENSURE THAT TREE ROOTS ARE NOT DAMAGED IN ANY WAY. THE INSPECTOR SHALL BE NOTIFIED IMMEDIATELY WHENEVER TREE ROOTS ARE ENCOUNTERED. FURTHER EXCAVATING AT THAT LOCATION SHALL BE AS DIRECTED BY THE INSPECTOR.
2. CONTRACTOR SHALL INFORM UTILITY COMPANY OF REQUIRED POLE RELOCATION AND COORDINATE WORK WITH UTILITY COMPANY.
3. TOP OF CURB SHALL BE 6" ABOVE GUTTER GRADE UNLESS OTHERWISE NOTED.

CITY OF HARTFORD, CONNECTICUT
DEPARTMENT OF PUBLIC WORKS
BUREAU OF ENGINEERING SERVICES

STANDARD DETAILS
SHEET II

SUBMITTED _____	RECOMMENDED <i>James D. [Signature]</i> DIVISION MANAGER	APPROVED <i>Anthony [Signature]</i> CITY ENGINEER, ESB
DRAWN _____ CHECKED _____	SCALE NOT TO SCALE	DAYBOOK NO. 011147 DATE NOVEMBER 1989

SHEET 5
OF 13