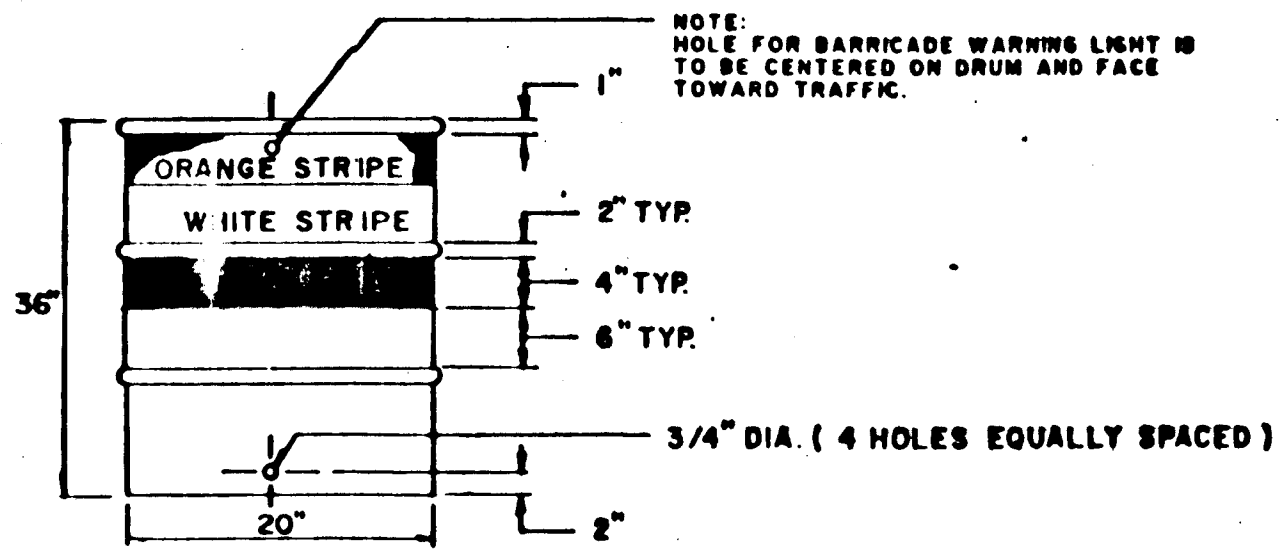


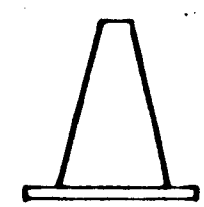
- LEGEND:**
- RC = STREET LEGALLY CLOSED
 - L = DETOUR (LEFT)
 - R = DETOUR (RIGHT)
 - CA = ROAD CLOSED AHEAD
 - LT = LOCAL TRAFFIC ONLY
 - C = ROAD CLOSED

TRAFFIC DRUM



- NOTES:**
- TRAFFIC DRUMS MAY BE CONSTRUCTED OF STEEL OR PLASTIC.
 - TRAFFIC DRUM SHALL BE DESIGNED IN ACCORDANCE WITH THE SPECIFICATIONS.
 - THE ENGINEER RESERVES THE RIGHT TO REJECT ANY DRUM HE DEEMS NOT SUITABLE FOR PURPOSE INTENDED.
 - THE WHITE STRIPES SHALL BE REFLECTIVE SHEETING - ENCAPSULATED LENS.
 - REFLECTORIZED STRIPES SHOULD NOT BE PLACED OVER THE PROFILING CIRCUMFERENTIAL RIBS OF THE DRUM.
 - THOSE SECTIONS OF DRUM NOT COVERED WITH REFLECTORIZED STRIPES SHALL BE ORANGE, IN COLOR.

TRAFFIC CONE



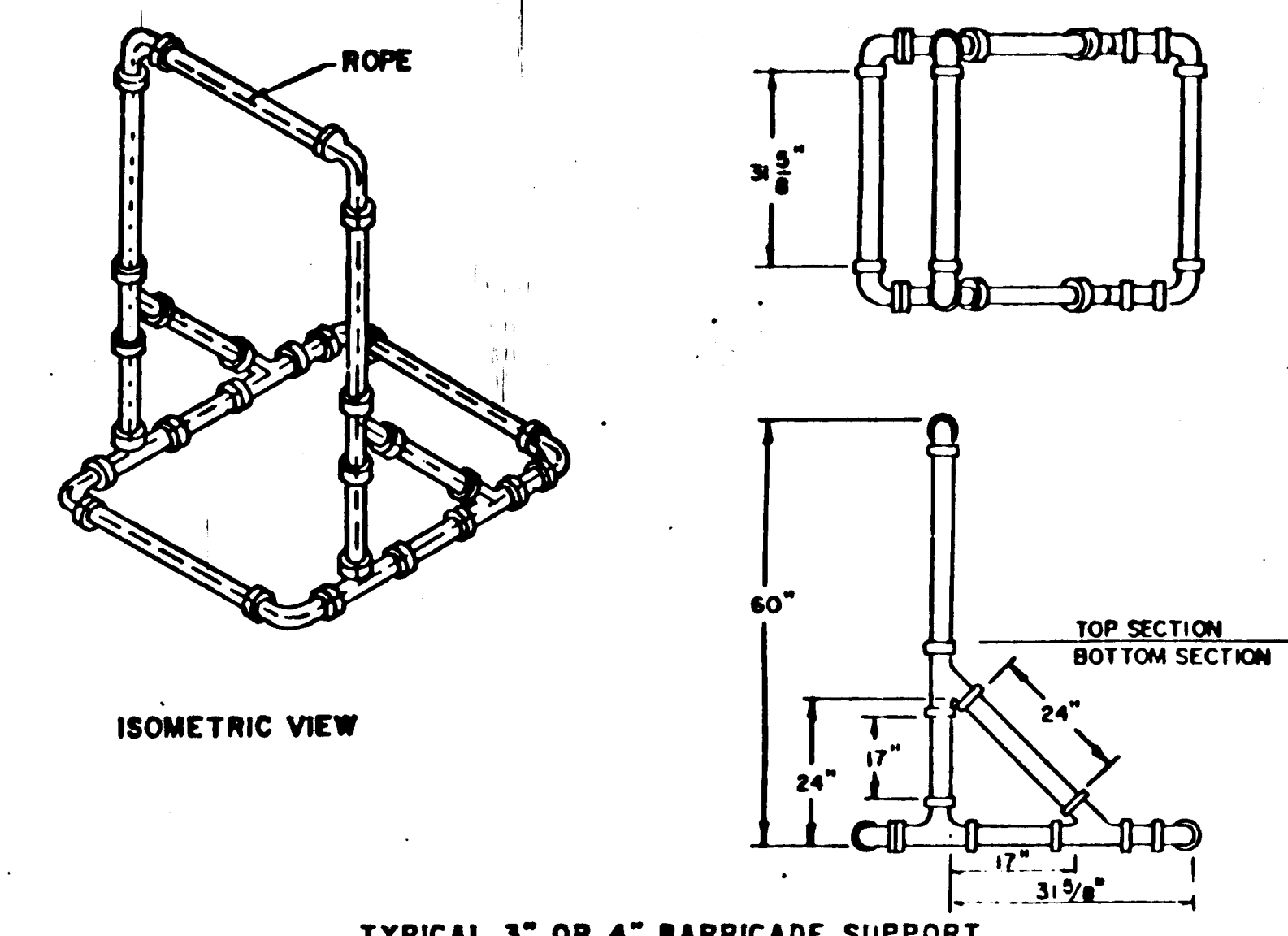
- NOTES:**
- TRAFFIC CONES SHALL BE DESIGNED IN ACCORDANCE WITH THE MANUAL ON UNIFORM TRAFFIC CONTROL DEVICES, CHAPTER VI, SECTION 6C - 3 CONE DESIGN.
 - CONES SHALL BE A MINIMUM OF 18" IN HEIGHT OR AS SPECIFIED. COLOR SHALL BE PREDOMINATELY FEDERAL ORANGE.
 - PLASTIC CONES ARE TO BE COLOR IMPREGNATED.
 - RUBBER CONES ARE TO BE REFLECTORIZED WITH INTERIOR RIBS FOR RIGIDITY.
 - CONE WALL THICKNESS MUST WITHSTAND IMPACT, WITHOUT DAMAGE TO EITHER CONE OR VEHICLE UPON IMPACT.
 - THE ENGINEER RESERVES THE RIGHT TO REJECT ANY CONE HE DEEMS NOT SUITABLE FOR PURPOSE INTENDED.

R4-7

(KEEP RIGHT)

SIZE (INCHES)	CONN. DOT #	SUPPORTS	ALUM. TMR.
(2) 24 X 30	31-0526	1	080
(3) 36 X 48	31-0540	2	100

- NOTES:**
- DIMENSIONS ARE APPROXIMATE.
 - BOTTOM SECTION MAY BE FILLED WITH SAND FOR BALLAST.
 - SUPPORT SHALL BE LOOSELY THREADED WITH ROPE, KNOTTED AS REQUIRED.

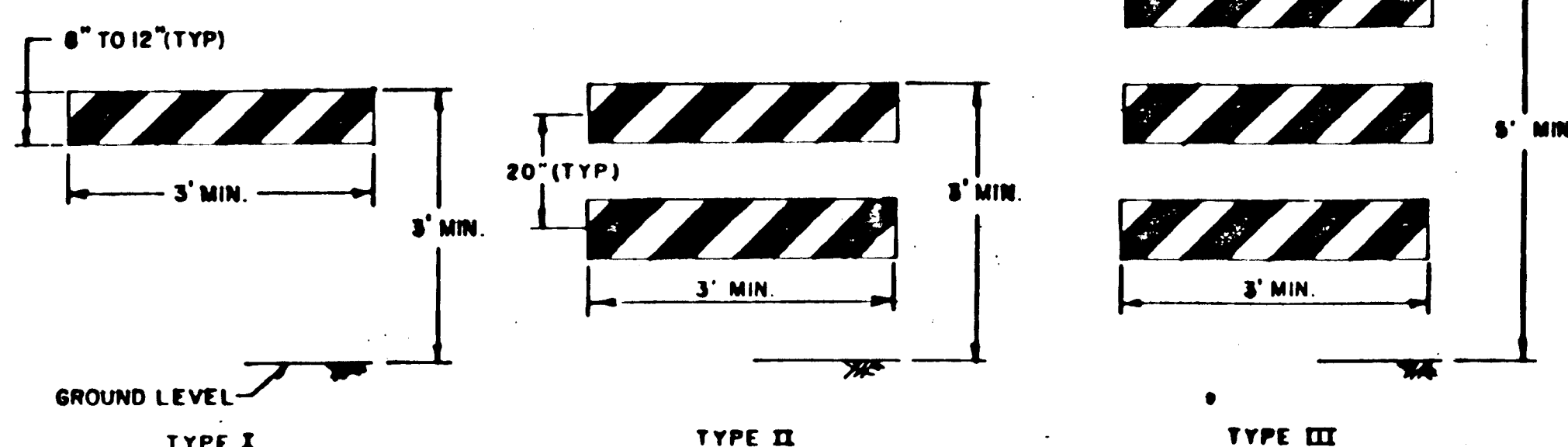


TYPICAL 3" OR 4" BARRICADE SUPPORT

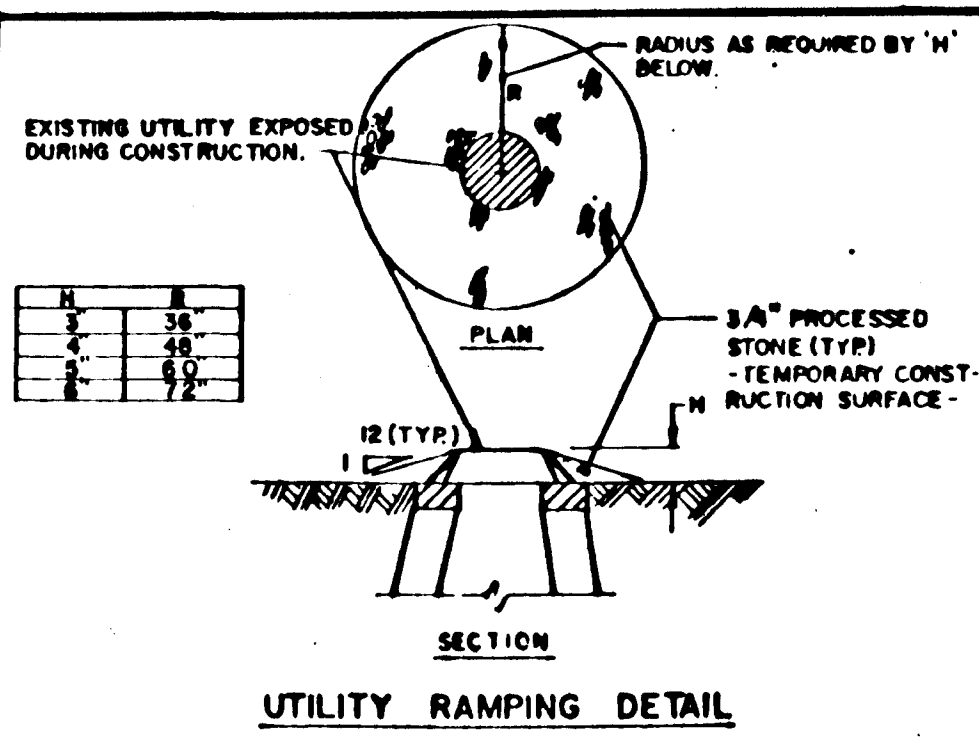
CONSTRUCTION BARRICADES

NOTE: CHECK GRAPHIC SCALES BEFORE USING DRAWINGS

- NOTES:**
- ALUMINUM BARRICADE FACE PANELS SHALL BE MOUNTED ON 3" OR 4" P.V.C. BARRICADE SUPPORT.
 - MARKINGS FOR BARRICADE FACE PANELS SHALL BE ALTERNATE ORANGE AND WHITE STRIPES SLOPING DOWNWARD IN THE DIRECTION TRAFFIC IS TO PASS. 6" WIDE STRIPES AT A 45° ANGLE SHALL BE USED.
 - THE ENTIRE AREA OF ORANGE AND WHITE STRIPES SHALL BE REFLECTIVE SHEETING - ENCAPSULATED LENS. BARRICADE FACE PANELS AS NOTED SHALL BE REFLECTORIZED ON BOTH SIDES. WHERE TRAFFIC PASSES ONLY IN ONE DIRECTION OF TRAVEL, ONLY THE SIDE FACING TRAFFIC SHALL BE REFLECTORIZED.
 - ALUMINUM BARRICADE FACE PANELS SHALL HAVE ROUNDED CORNERS.
 - THE ENGINEER RESERVES THE RIGHT TO REJECT ANY BARRICADE FACE PANEL WHICH HE DEEMS HAZARDOUS, AND NOT IN THE BEST INTEREST OF THE MOTORING PUBLIC, OR NOT SUITABLE FOR PURPOSE INTENDED.



ALUMINUM BARRICADE FACE PANELS



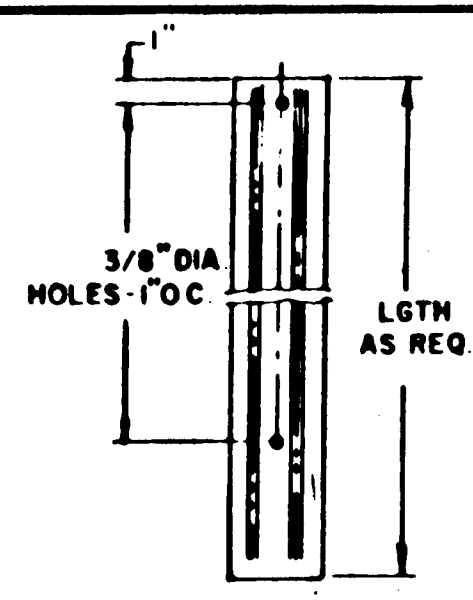
UTILITY RAMPING DETAIL

ROAD CLOSED AHEAD (CA)		ROAD CLOSED (C)	
SIZE (INCHES)	SUPPORTS	SIZE (INCHES)	SUPPORTS
CA	36" x 36"	C	36" x 36"
	1		1

LOCAL TRAFFIC ONLY (LT)	
SIZE (INCHES)	SUPPORTS
30" x 36"	2

DETOUR (L)		DETOUR (R)	
SIZE (INCHES)	SUPPORTS	SIZE (INCHES)	SUPPORTS
(L)	48" x 18"	(R)	48" x 18"
	2		2

STREET LEGALLY CLOSED (RC)	
SIZE (INCHES)	SUPPORTS
30" x 18"	2



WT.	A	B	C
3lb or 3lb	1 5/8"	1 3/4"	3 1/2"
	1 5/16"	1 7/8"	3 1/2"

NOTES:

STEEL FOR POST SHALL CONFORM TO MECHANICAL REQUIREMENTS OF ASTM A499 - 81 GRADE 80 AND TO CHEMICAL REQUIREMENTS OF ASTM A1 - 76 CARBON STEEL TEE RAIL HAVING NORMAL WEIGHT OF 91 LB OR GREATER PER LINEAR YARD.

TYPICAL SIGN-POST DETAILS

CITY OF HARTFORD, CONNECTICUT
DEPARTMENT OF TRANSPORTATION

RECONSTRUCTION OF CAPITOL AVENUE DRAINAGE INLET

TRAFFIC DETAILS, SIGNAGE

SHEET 2 OF 6

PROJECT ENGINEER: [Signature] RECOMMENDED: [Signature] APPROVED: [Signature]

DRAWN: [Signature] SCALE: DATE: [Signature]

CHECKED: [Signature]

