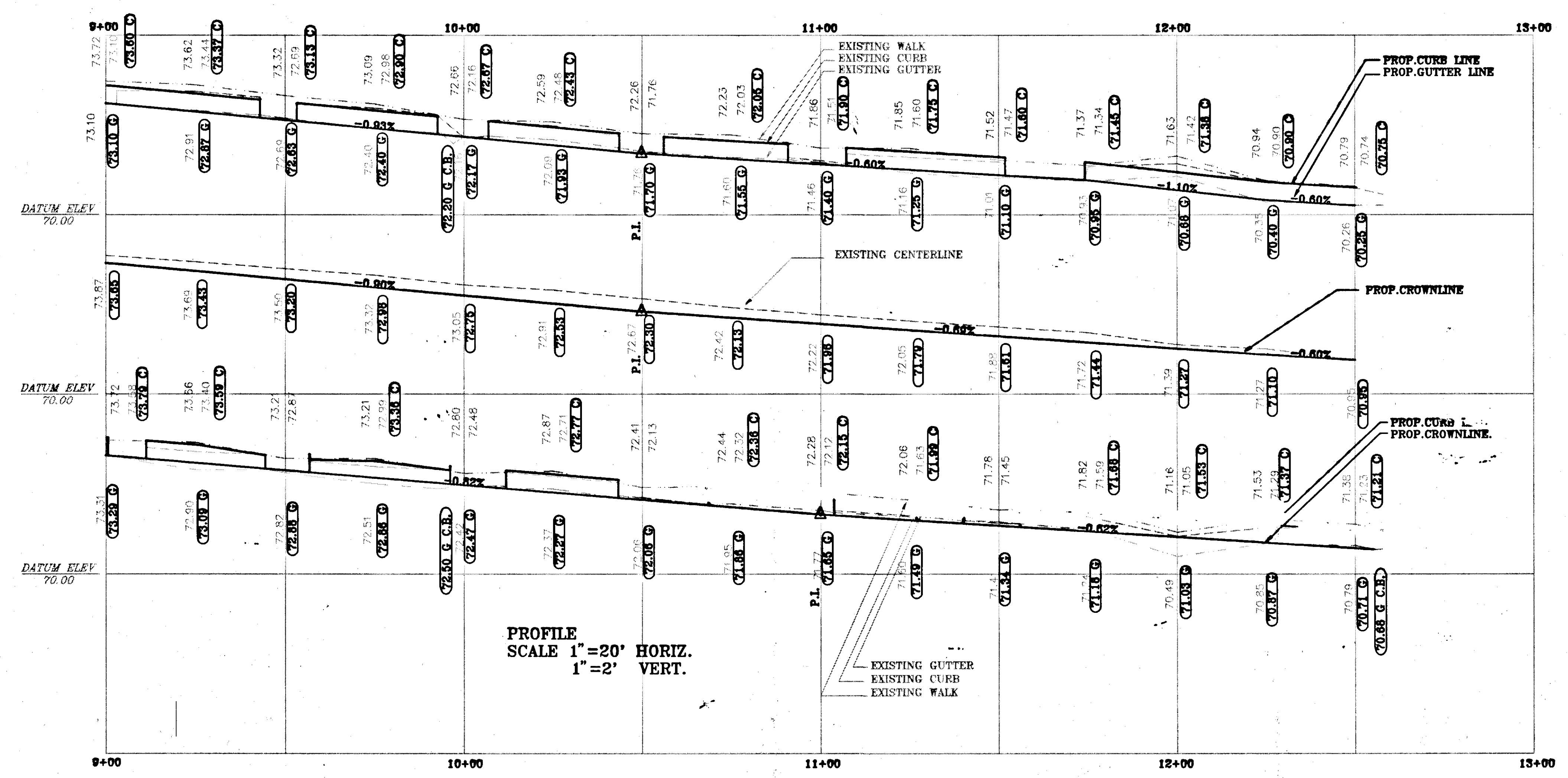


PLAN  
SCALE 1"=20' HORIZ.



PROFILE  
SCALE 1"=20' HORIZ.  
1"=2' VERT.

- 1 BENCH MARK THE DISK AT SOUTH EAST CORNER OF RUSS AND OAK STREETS ELEVATION=71.42'
- 2 ELEVATIONS ARE BASED ON METROPOLITAN DISTRICT COMMISSION (MDC) DATUM
- 3 RIM OR FRAME ELEVATIONS OF ALL UTILITY GATE BOXES, HANDHOLES, MANHOLES AND CATCH BASINS ARE TO BE ADJUSTED AS REQUIRED TO MATCH PROPOSED FINISHED PAVED SURFACES
- 4 CALL BEFORE YOU DIG - THE CONTRACTOR IS HEREBY REMINDED THAT PURSUANT TO PUBLIC ACT 87-71 REQUIRES NOTIFICATION TO UTILITY COMPANIES OF PENDING EXCAVATION AT OR NEAR THE LOCATION OF PUBLIC UTILITIES. THE CONTRACTOR SHALL CALL THIS NUMBER 1-800-922-4455 AT LEAST 48 HOURS, EXCLUDING SATURDAYS, SUNDAYS AND HOLIDAYS, BUT NOT MORE THAN THIRTY DAYS (ONE MONTH) PRIOR TO EXCAVATION

CITY OF HARTFORD, CONNECTICUT  
DEPARTMENT OF PUBLIC WORKS  
ENGINEERING SERVICES

PLAN & PROFILE OF OAK STREET  
FROM STA. 9+00 TO RUSS STREET

SUBMITTED PROJECT ENGINEER <i>[Signature]</i>	RECOMMENDED MANAGER <i>[Signature]</i>	APPROVED CITY ENGINEER <i>[Signature]</i>
DRAWN MK	SCALE: HORIZ. 1"=20' VERT. 1"=2'	DATEBOOK NO. 011299 DATE 8/10/93 FILE NAME
CHECKED MK		SHEET 7 OF 7