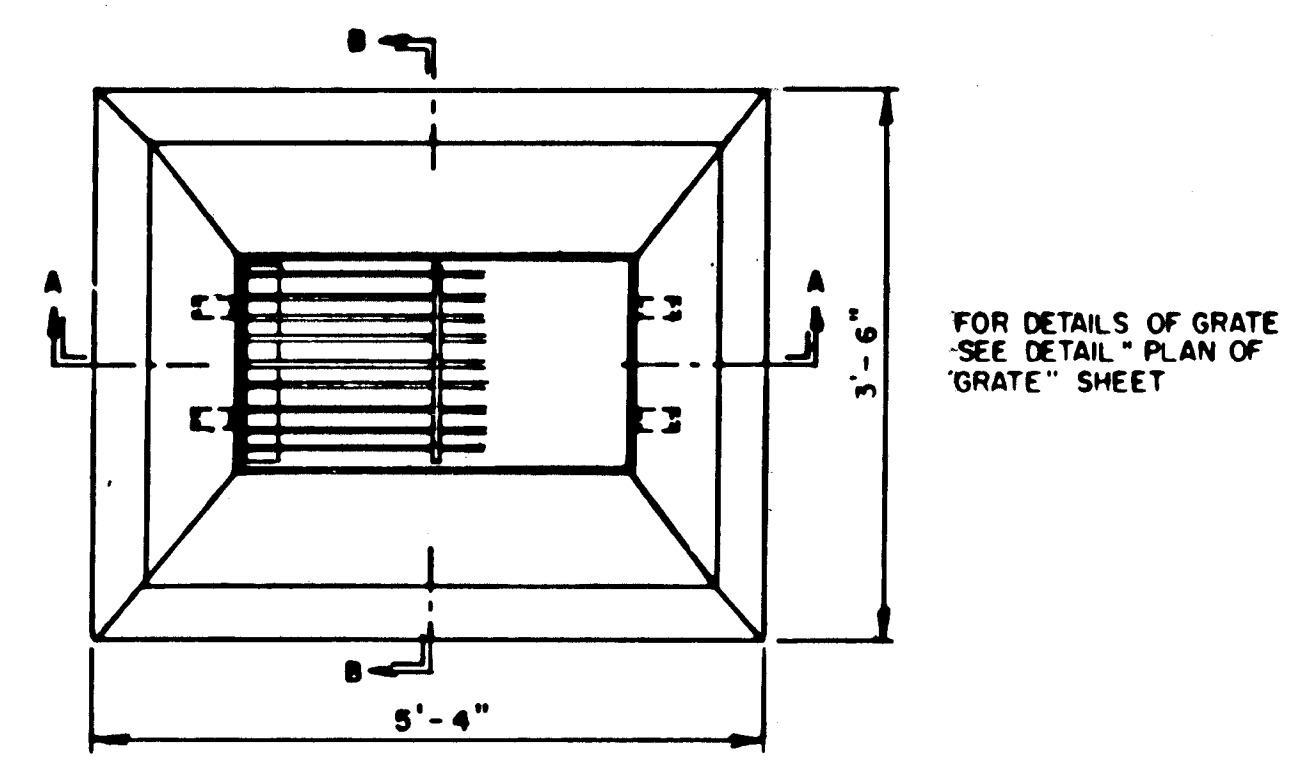
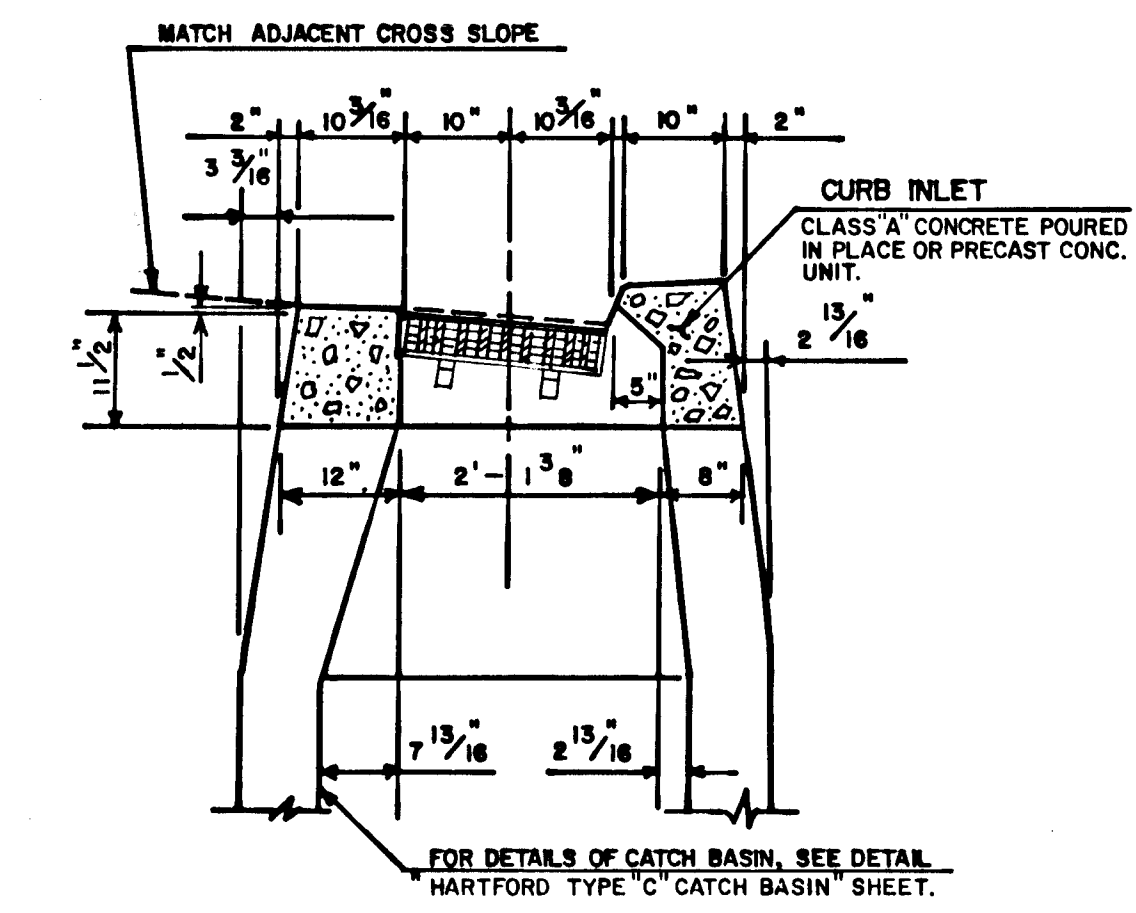
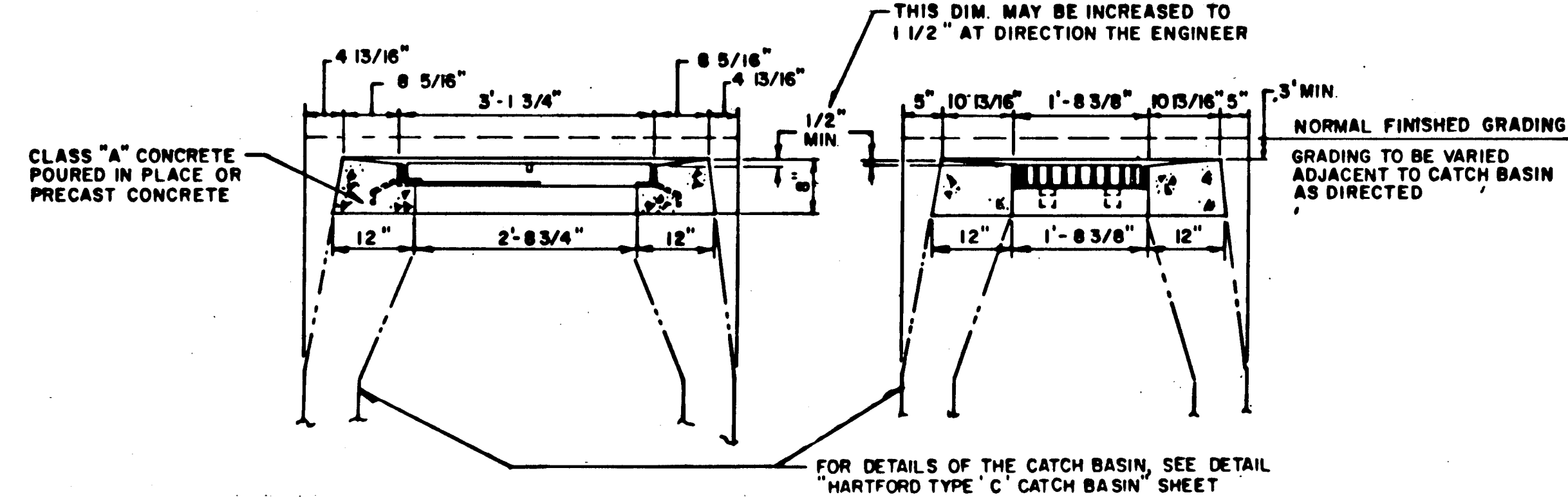


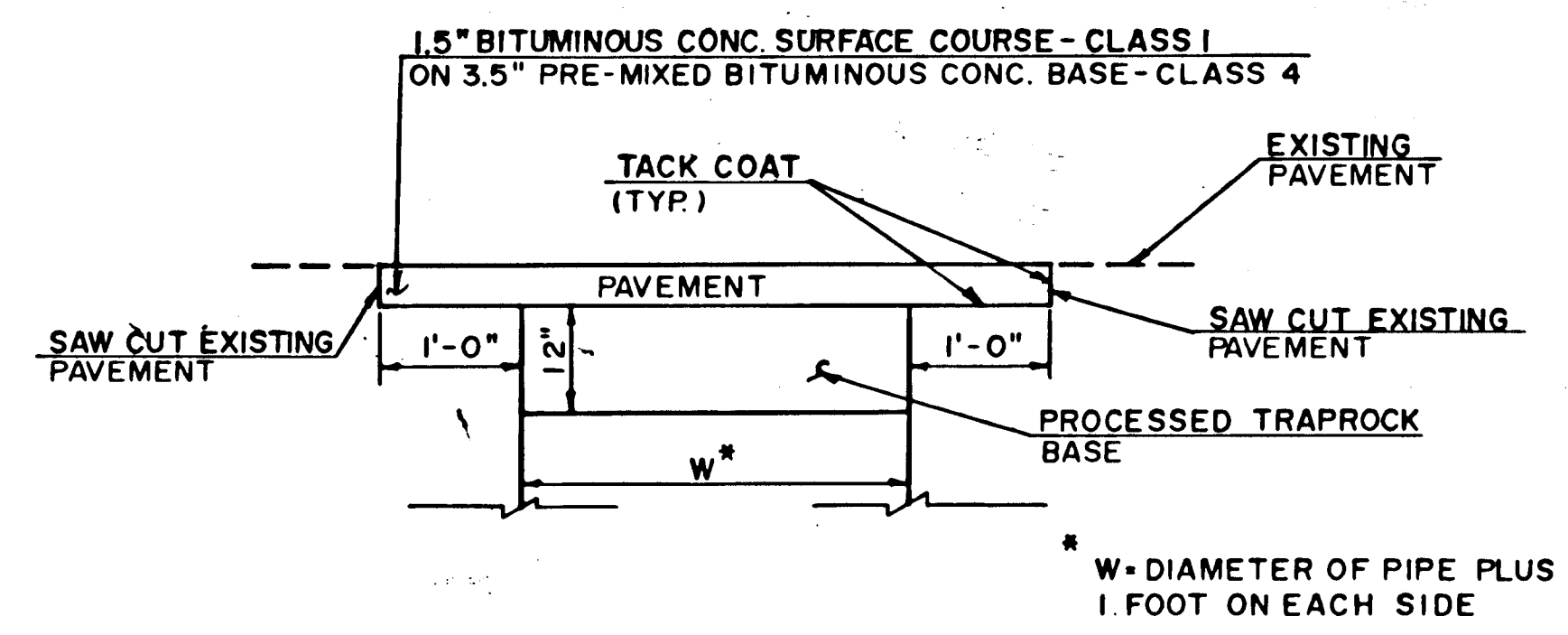
CITY MERESTONE



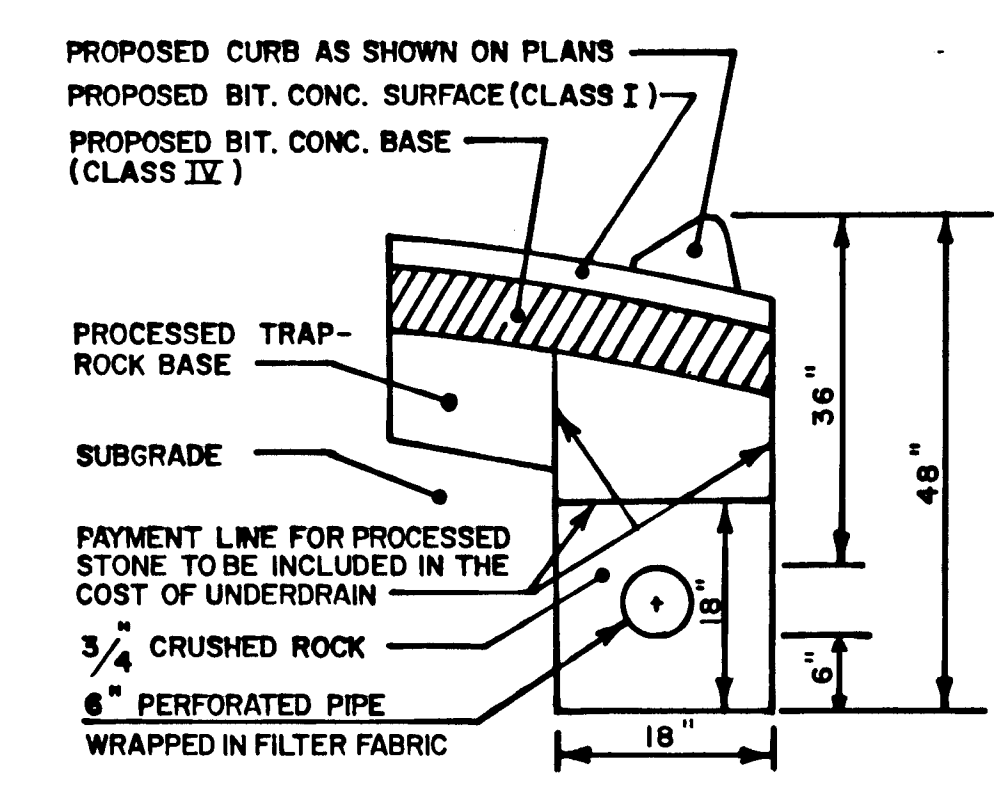
HARTFORD TYPE 'C-L' CATCH BASIN INLET



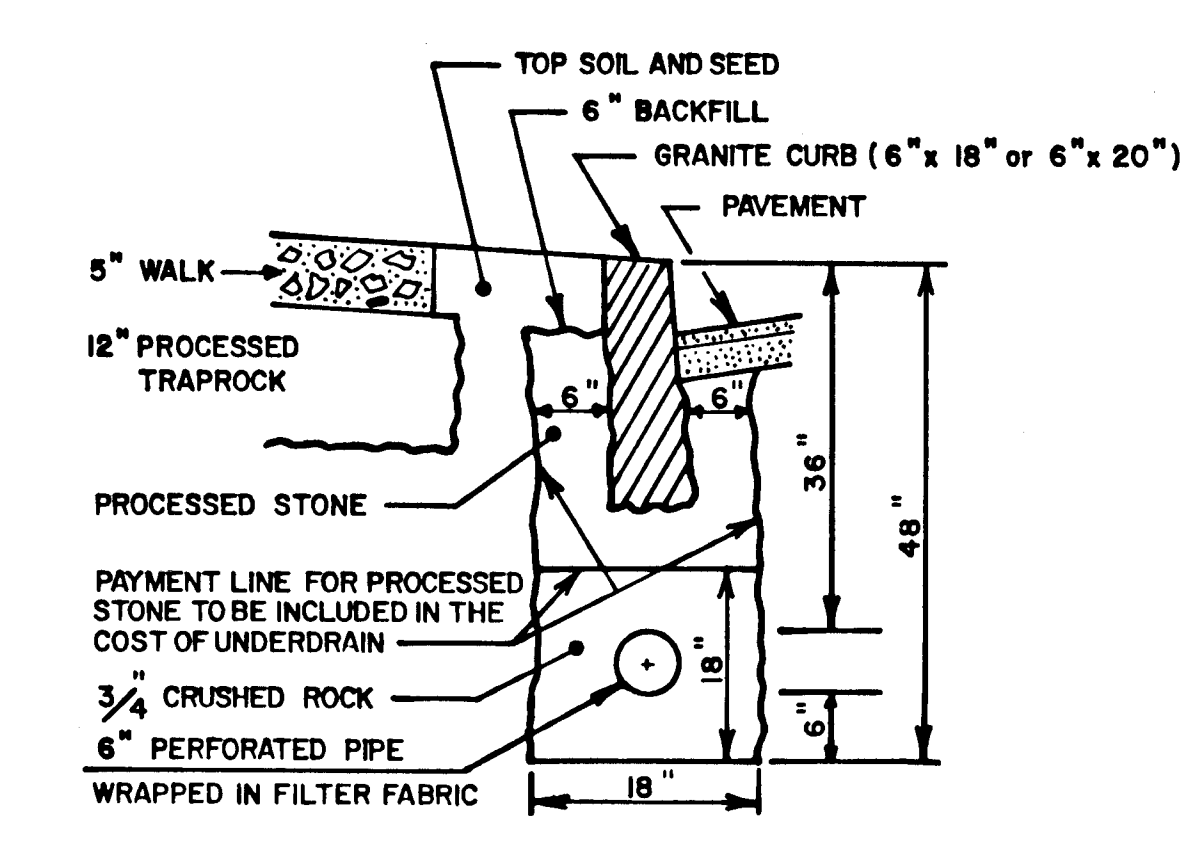
TYPE 'C' CATCH BASIN



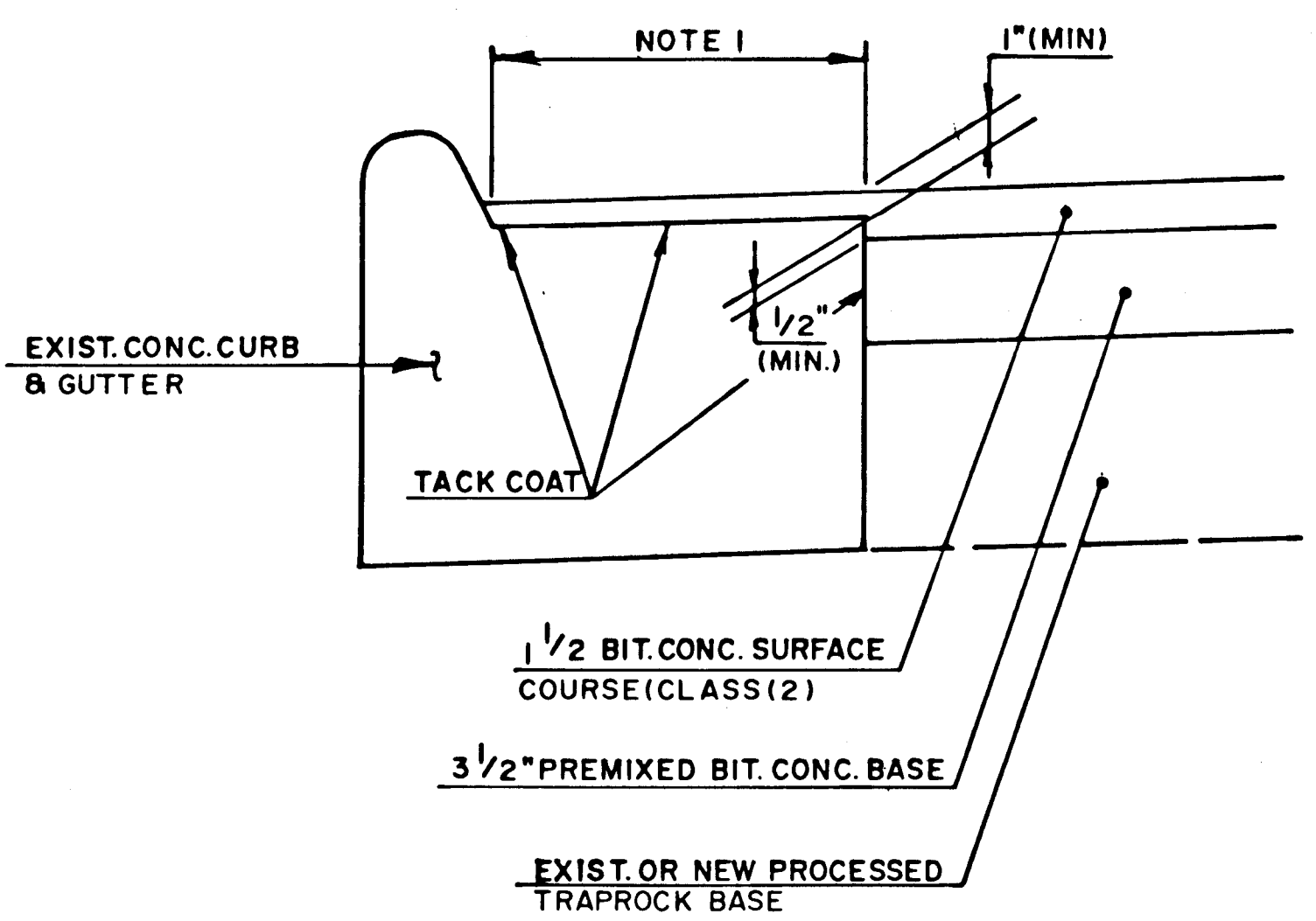
TYPICAL TREATMENT OF PERMANENT PAVEMENT REPLACEMENT



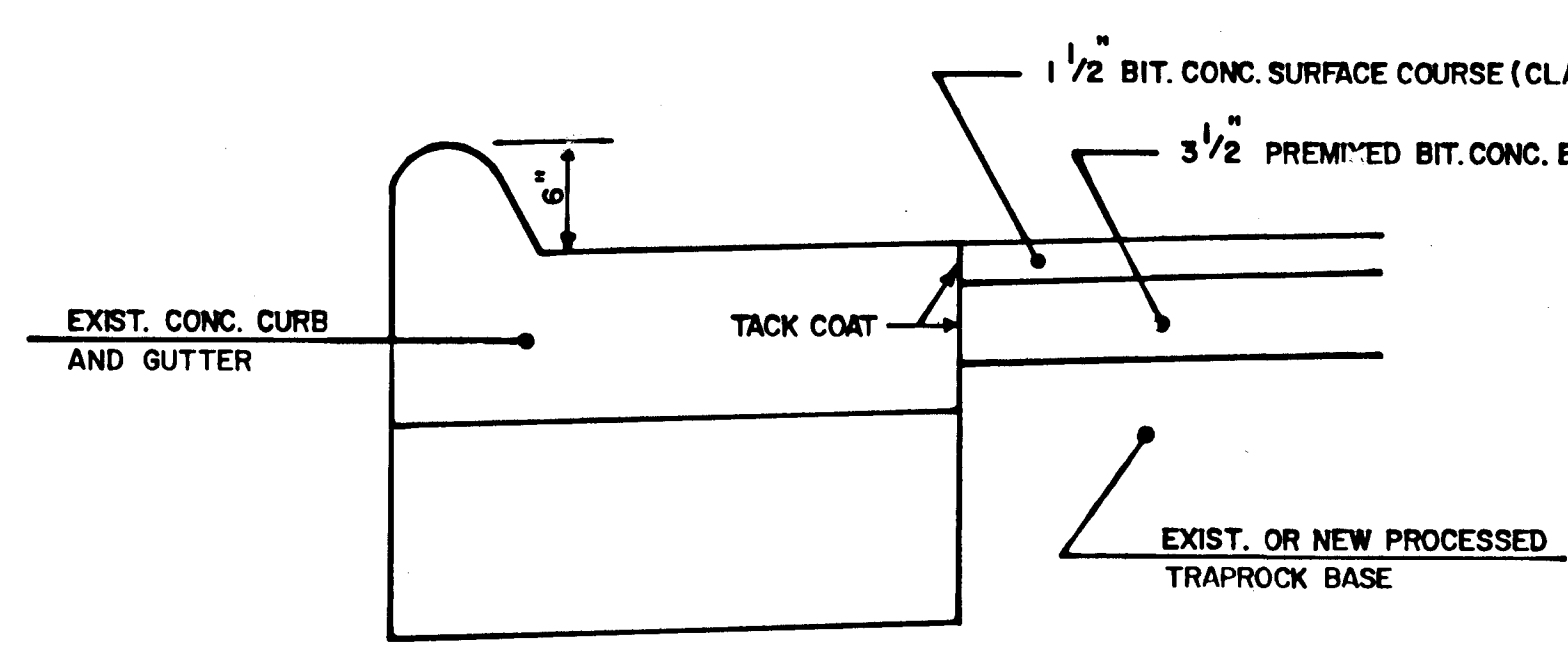
CURB UNDERDRAIN FOR BIT. CURB



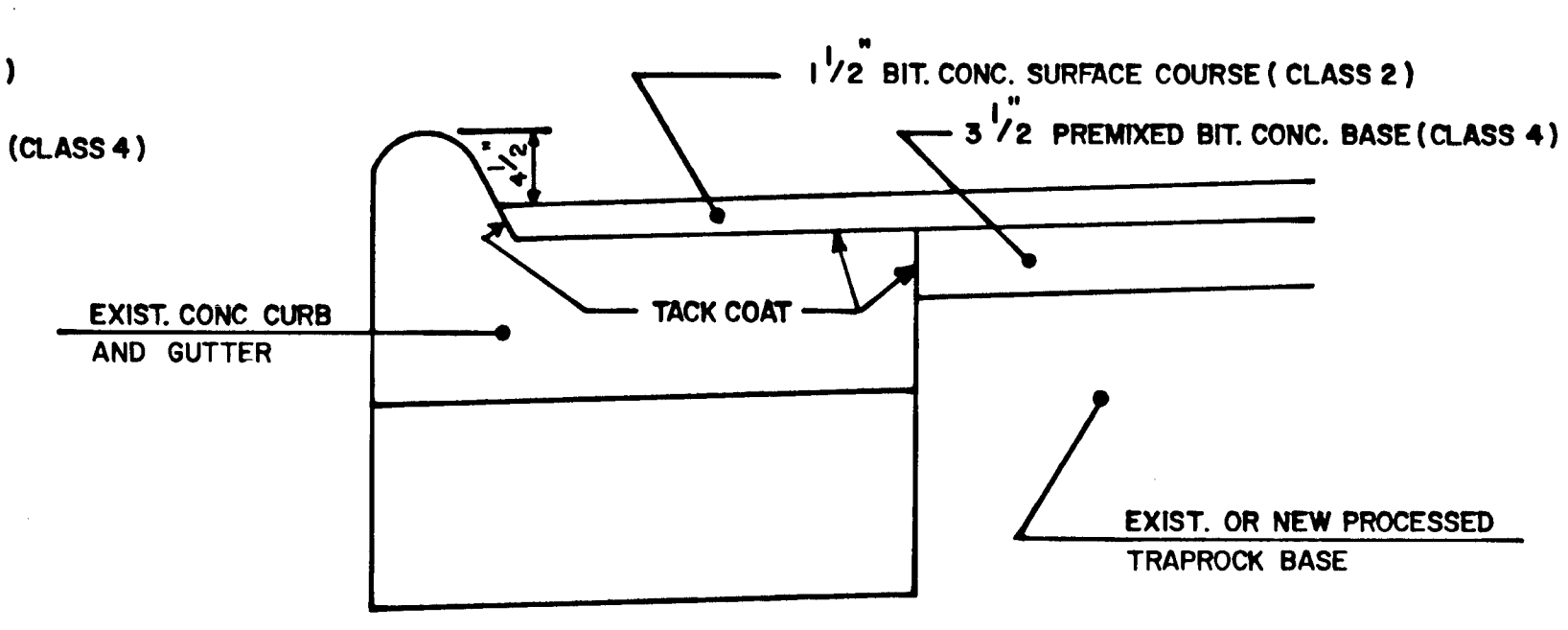
CURB UNDERDRAIN FOR GRANITE CURB



PAVING AT CONCRETE CURB & GUTTER



PAVING AT CONCRETE CURB AND GUTTER WITH 6" REVEAL



PAVING AT CONCRETE CURB AND GUTTER WITH 4 1/2" REVEAL

NOTE 1. REMOVE EXISTING BIT. CONC. SURFACE, CLEAN ALL CRACKS AND JOINTS, FILL WITH CRACK SEALER PRIOR TO APPLICATION OF TACK COAT AND PLACEMENT OF BIT. CONC. WORK TO BE PAID UNDER BID ITEM 47C.

CONSTRUCTION NOTES

1. WHEN EXCAVATING CLOSE TO TREES, USE ONLY HAND TOOLS. CARE SHALL BE TAKEN TO ENSURE THAT TREE ROOTS ARE NOT DAMAGED IN ANY WAY. THE INSPECTOR SHALL BE NOTIFIED IMMEDIATELY WHENEVER TREE ROOTS ARE ENCOUNTERED. FURTHER EXCAVATING AT THAT LOCATION SHALL BE AS DIRECTED BY THE INSPECTOR.
2. CONTRACTOR SHALL INFORM UTILITY COMPANY OF REQUIRED POLE RELOCATION AND COORDINATE WORK WITH UTILITY COMPANY.
3. TOP OF CURB SHALL BE 6" ABOVE GUTTER GRADE UNLESS OTHERWISE NOTED.

CITY OF HARTFORD, CONNECTICUT DEPARTMENT OF PUBLIC WORKS BUREAU OF ENGINEERING SERVICES			
STANDARD DETAILS SHEET II			
SUBMITTED	RECOMMENDED	APPROVED	
DIVISION MANAGER		CITY ENGINEER, ESB	
DRAWN	SCALE	DAYBOOK NO.	
CHECKED	NOT TO SCALE	DATE: NOVEMBER 1989	

SHEET 3 OF 9