

M.H.	STA.	FLOW LINE	INVERT	INVERT	INVERT	INVERT
STORM	0+94	7.68				
STORM	2+65	8.33				
SANIT.	3+05	1.81				
STORM	4+30	8.71	11.00	9.71	11.03	8.88
		27" W	12" NE	10" NW	12" SE	21" S
		8.78				
		24" E				

Δ = 90°00'00"
R = 15.00'
T = 15.00'
L = 23.56'

CENTERLINE ROW
Δ = 14°04'44"
R = 809.83'
T = 100.00'
L = 198.99'

PLAN
1" = 20'

NORTH SIDE
ELEV. 15.00

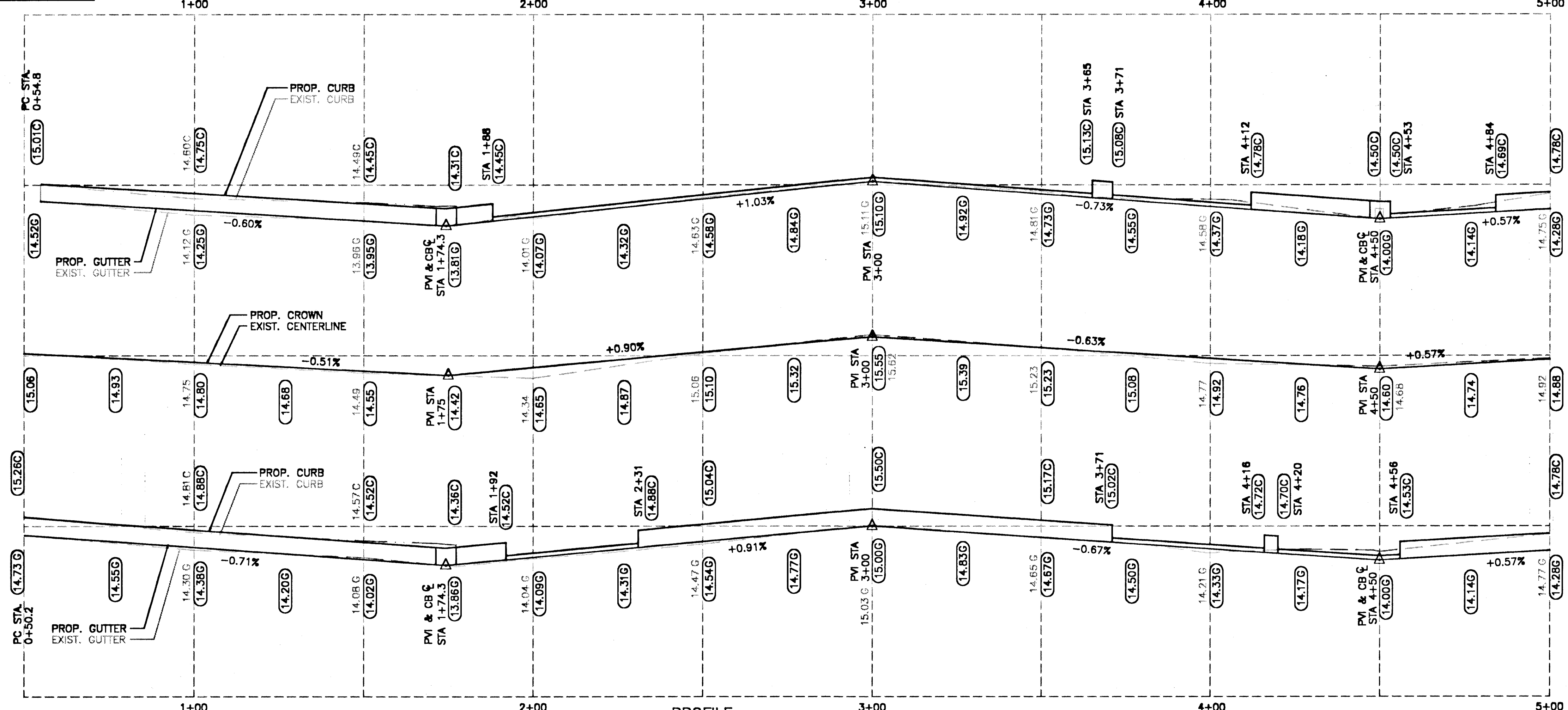
CROWN
ELEV. 15.00

SOUTH SIDE
ELEV. 15.00

NORTH SIDE
ELEV. 15.00

CROWN
ELEV. 15.00

SOUTH SIDE
ELEV. 15.00



PROFILE
HORZ. 1" = 20'
VERT. 1" = 2'

NOTE:
ROADWAY TO BE OFFSET 2' SOUTH
OF EXIST. CENTERLINE OF ROW
FROM BRAINARD ROAD TO P.C.
STA. 12+22.80

1. CONSTRUCT 2" BIT. CONC. ON NEW FOUNDATION
2. TOPSOIL, SEEDING & MULCHING
3. CONSTRUCT BIT. CONC. DRIVEWAY MAINTAIN MIN. 3% SLOPE TO GUTTER
4. INSTALL NEW RADIUS/STRAIGHT GRANITE CURB ON NEW FOUNDATION SLOPED TO MEET DRIVEWAY GRADE AT STREETLINE OR TO MEET BCLC SEE DETAIL ON SHEET 8 OF 17, 'STANDARD CONSTRUCTION DETAILS IV'
5. ELEVATIONS ARE BASED ON METROPOLITAN DISTRICT COMMISSION (MDC) DATUM
6. RIM OR FRAME ELEVATIONS OF ALL UTILITY GATE BOXES, HANDHOLES, MANHOLES AND CATCH BASINS ARE TO BE ADJUSTED AS REQUIRED TO MATCH PROPOSED FINISHED PAVED SURFACES
7. CALL BEFORE YOU DIG - THE CONTRACTOR IS HEREBY REMINDED THAT PURSUANT TO PUBLIC ACT 87-71 REQUIRES NOTIFICATION TO UTILITY COMPANIES OF PENDING EXCAVATION AT OR NEAR THE LOCATION OF PUBLIC UTILITIES. THE CONTRACTOR SHALL CALL THIS NUMBER 1-800-922-4455 AT LEAST 48 HOURS, EXCLUDING SATURDAYS, SUNDAYS AND HOLIDAYS, BUT NOT MORE THAN THIRTY DAYS (ONE MONTH) PRIOR TO EXCAVATION
8. THE LOCATION OF EXISTING UTILITIES SHOWN ON THESE PLANS ARE APPROXIMATE AND HAVE BEEN BASED ON AVAILABLE INFORMATION REVIEWED. THE CONTRACTOR IS RESPONSIBLE FOR VERIFYING THESE LOCATIONS IN THE FIELD AND TAKING ALL REQUIRED PRECAUTIONS AND NECESSARY STEPS TO SUPPORT AND/OR PROTECT THESE UTILITIES FROM DAMAGE. ANY DAMAGE RESULTING FROM THE CONTRACTOR'S NEGLIGENCE, AS DETERMINED BY THE ENGINEER, SHALL RESULT IN THE CONTROLLING UTILITY, OR ITS AGENTS, MAKING REPAIRS AT THE CONTRACTOR'S EXPENSE.
9. STORM DRAIN FLOW LINE DATA BASED ON MDC PLAN TITLED "MURPHY ROAD", DATED JULY 1985
10. ELEVATIONS BASED ON MDC (CITY) DATUM
11. EXISTING 150psi HIGH PRESSURE GAS MAIN AT DEPTHS VARYING FROM 18" TO 48" COVER. THE CONTRACTOR IS RESPONSIBLE TO TAKE ADEQUATE MEASURES AS RECOMMENDED BY CONNECTICUT NATURAL GAS TO ENSURE INTEGRITY OF THIS MAIN AND ALL LATERALS AND CONNECTION DURING CONSTRUCTION.

BENCHMARKS

EL. 14.05 CMS @ STA. 1+98.81
EL. 14.30 CMS @ STA. 3+97.80

RADIUS GRANITE CURB SCHEDULE				
IDENTIFYING ARC LENGTH	RADIUS	CURB SIZE EACH PIECE	NO. OF PIECES/ARC	TOTAL NO. OF PIECES
12.57'	4'	6.3'	2	4
9.38'	6'	4.7'	2	72
9.42'	4.7'	7.2'	1	1
11.29'	7'	5.7'	2	4
11.65'	5.7'	6.2'	2	3
18.60'	6.2'	6.25'	2	32
12.22'	8'	6.25'	2	2
12.35'	6.25'	6.25'	2	2
12.43'	6.25'	6.25'	2	2
12.57'	6.25'	6.25'	2	2
12.65'	6.25'	6.25'	2	2
15.31'	10'	5.2'	3	156
15.50'	5.2'	5.2'	3	3
15.71'	5.2'	5.2'	3	3
15.96'	5.2'	5.2'	3	3
18.85'	12'	6.2'	3	3

CITY OF HARTFORD, CONNECTICUT
DEPARTMENT OF PUBLIC WORKS
ENGINEERING SERVICES

RECONSTRUCTION OF MURPHY ROAD
PLAN & PROFILE
BRAINARD RD. TO STA. 5+00

SUBMITTED <i>Robert S. Miller</i> PROJECT ENGINEER	RECOMMENDED <i>John J. Sene</i> MANAGER	APPROVED <i>Frank Verducci</i> CITY ENGINEER
DRAWN JDS	SCALE: HORZ. 1" = 20' VERT. 1" = 2'	DAYBOOK NO. 011861 DATE FILE NAME MURPHY.DWG
CHECKED		SHEET 8 OF 17