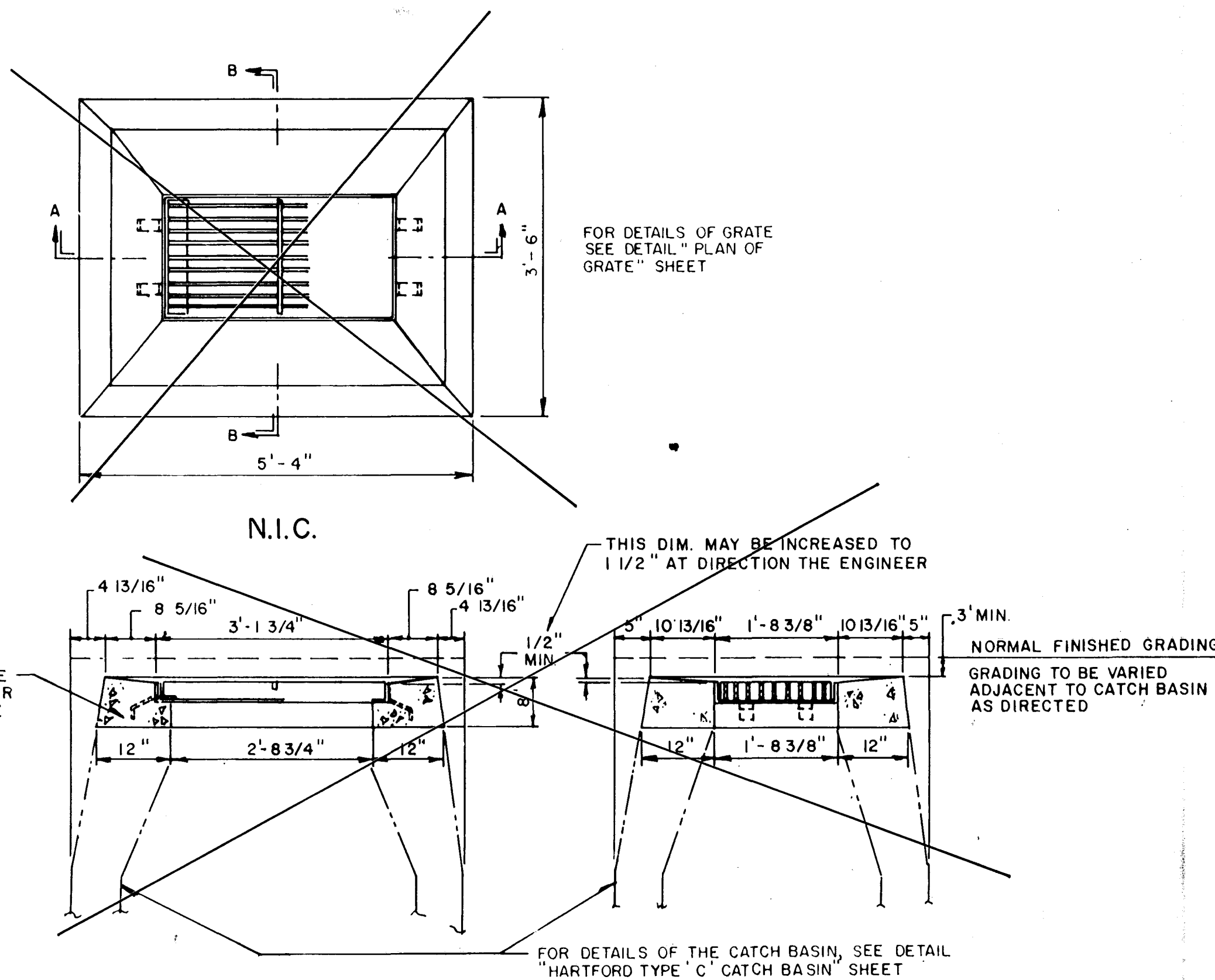
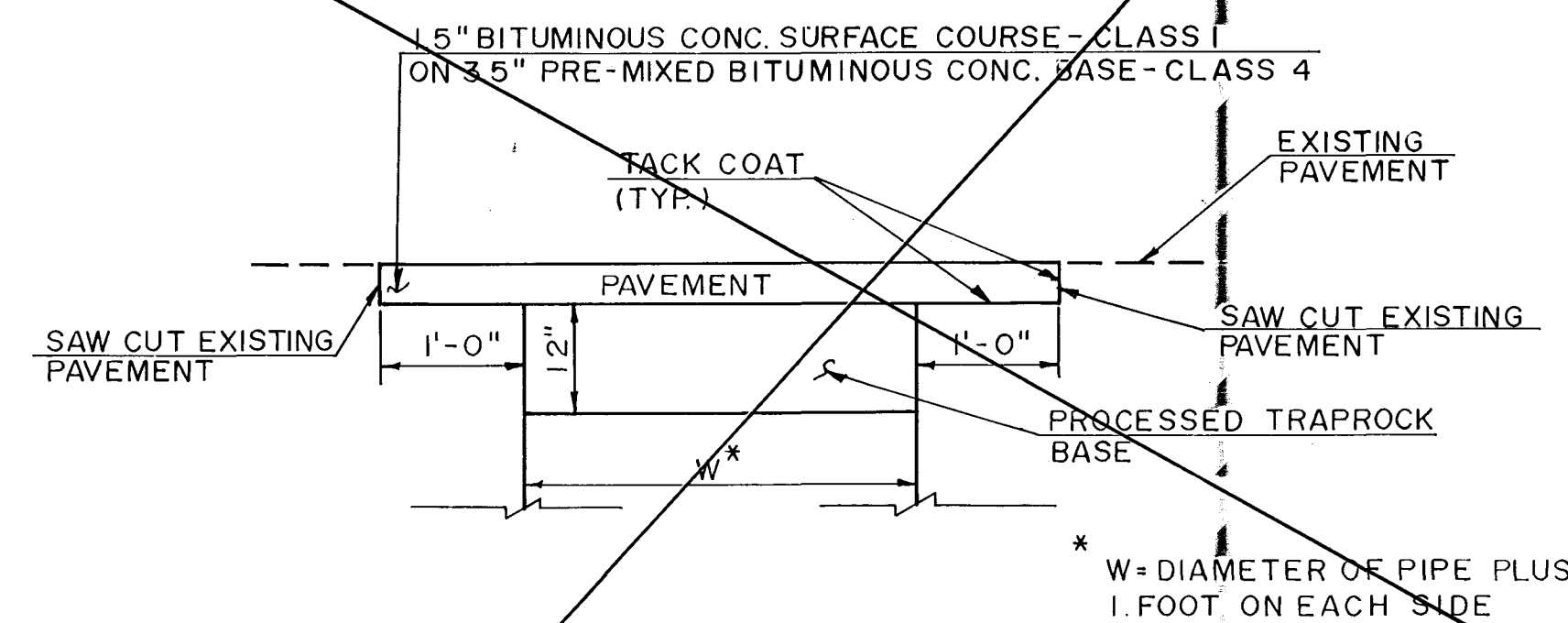


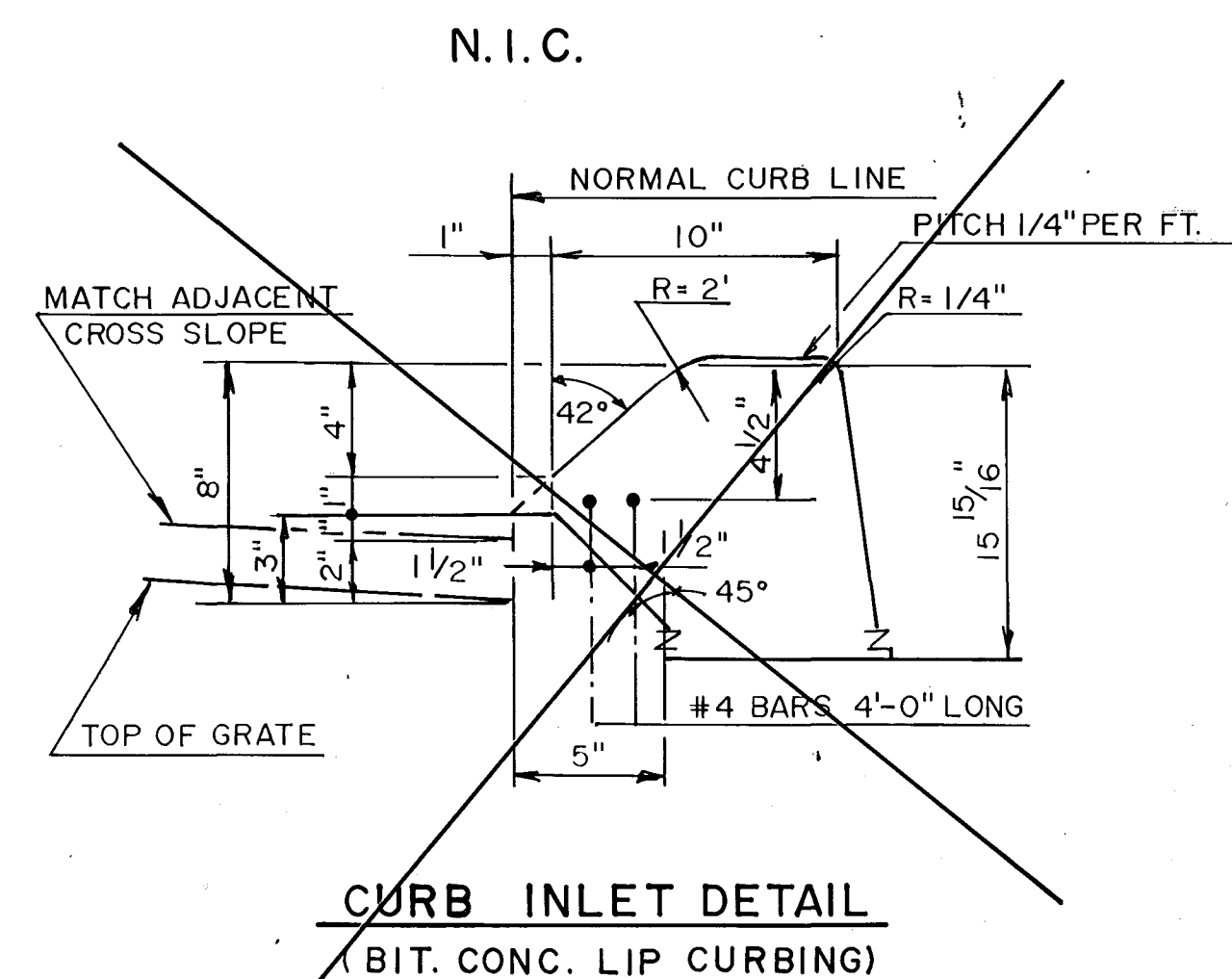
CITY MERESTONE



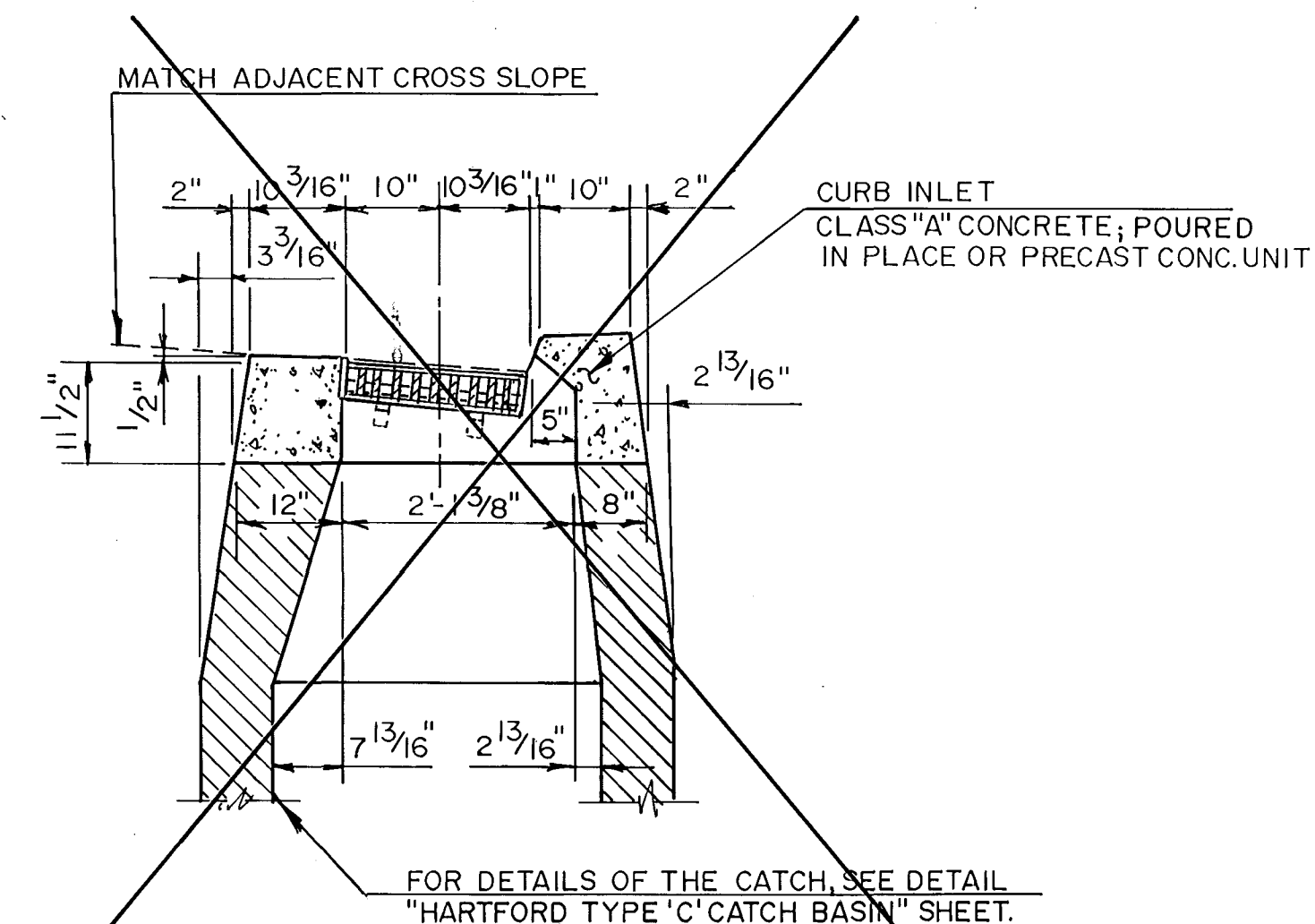
HARTFORD TYPE 'C-L' CATCH BASIN INLET



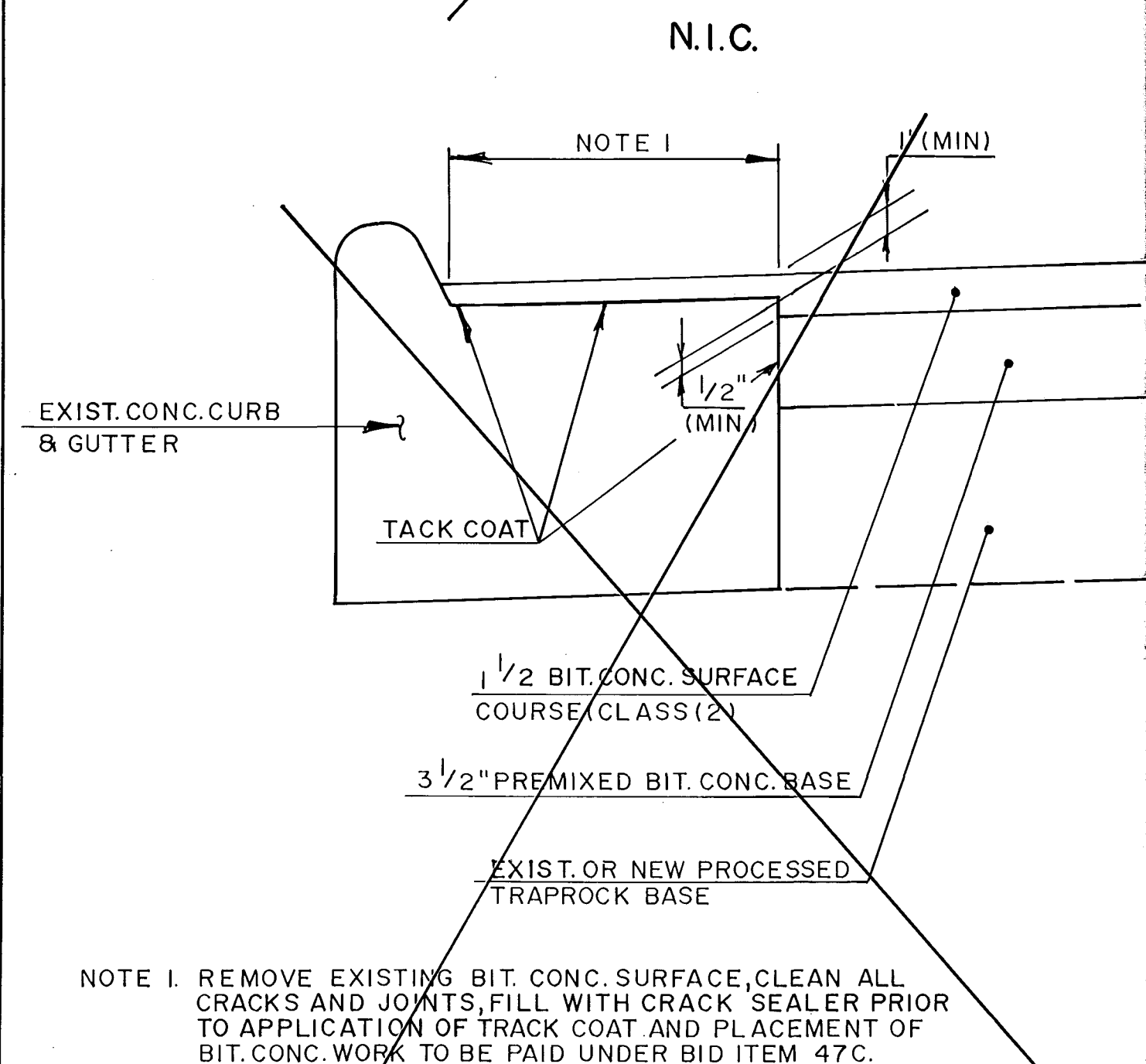
TYPICAL TREATMENT OF PERMANENT PAVEMENT REPLACEMENT



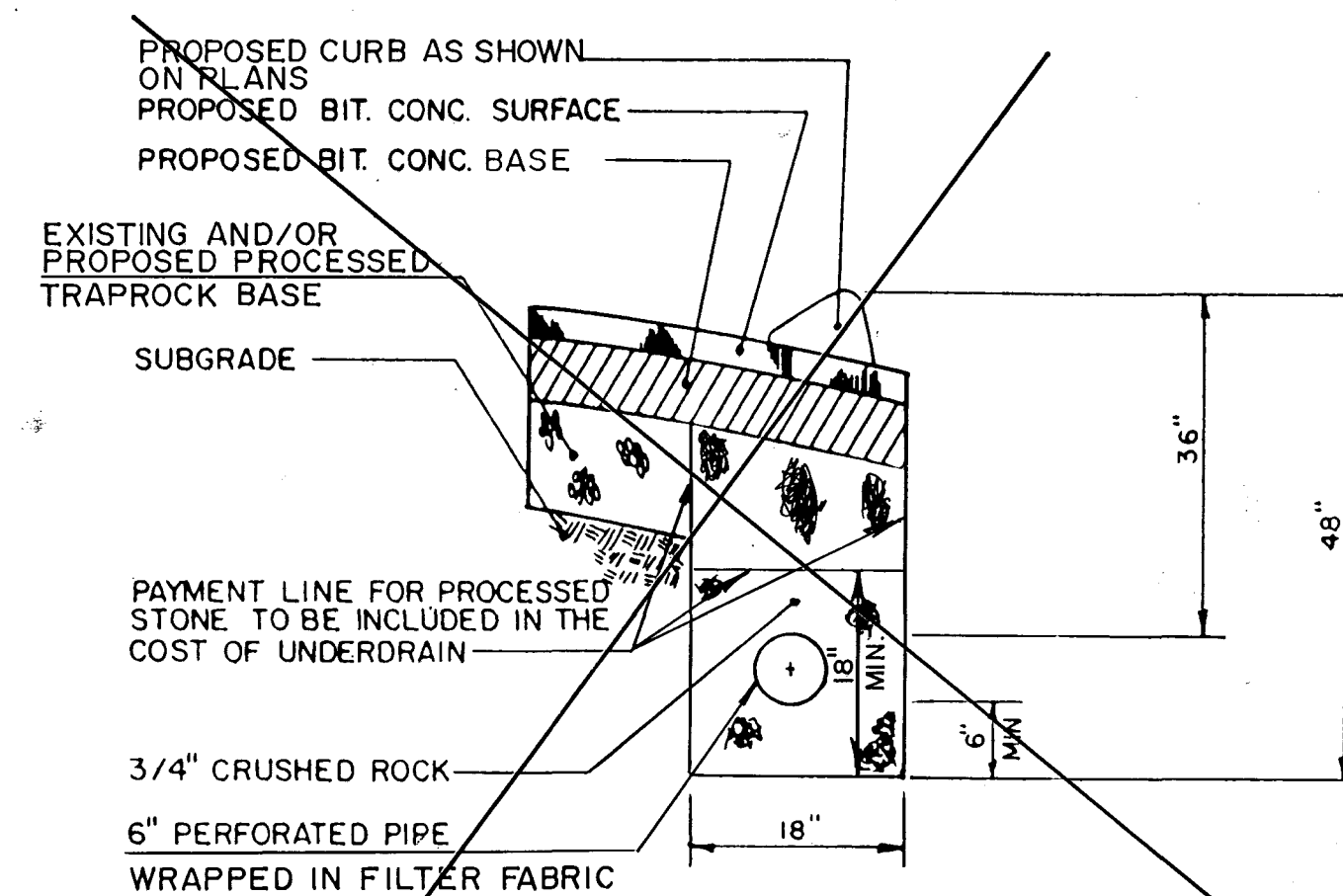
CURB INLET DETAIL (BIT. CONC. LIP CURBING)



TYPE "C" CATCH BASIN



PAVING AT CONCRETE CURB & GUTTER



CURB UNDERDRAIN

CONSTRUCTION NOTES

1. WHEN EXCAVATING CLOSE TO TREES, USE ONLY HAND TOOLS. CARE SHALL BE TAKEN TO ENSURE THAT TREE ROOTS ARE NOT DAMAGED IN ANY WAY. THE INSPECTOR SHALL BE NOTIFIED IMMEDIATELY WHENEVER TREE ROOTS ARE ENCOUNTERED. FURTHER EXCAVATING AT THAT LOCATION SHALL BE AS DIRECTED BY THE INSPECTOR.
2. CONTRACTOR SHALL INFORM UTILITY COMPANY OF REQUIRED POLE RELOCATION AND COORDINATE WORK WITH UTILITY COMPANY.
3. TOP OF CURB SHALL BE 6" ABOVE GUTTER GRADE UNLESS OTHERWISE NOTED.

KENSINGTON STREET / ARBOR STREET

MISCELLANEOUS DETAILS

THE CITY OF
HARTFORD, CONNECTICUT

PURCELL
ASSOCIATES

SHEET NO.
5 OF 12
DAYBOOK NO.
01209

NO.	DATE	REVISION
DESIGNED: A.M.	DATE: MAY 14, 1990	
DRAWN: T.N.S.	SCALE: N.T.S.	
CHECKED: P.L.		
APPROVED: R.C.G.		