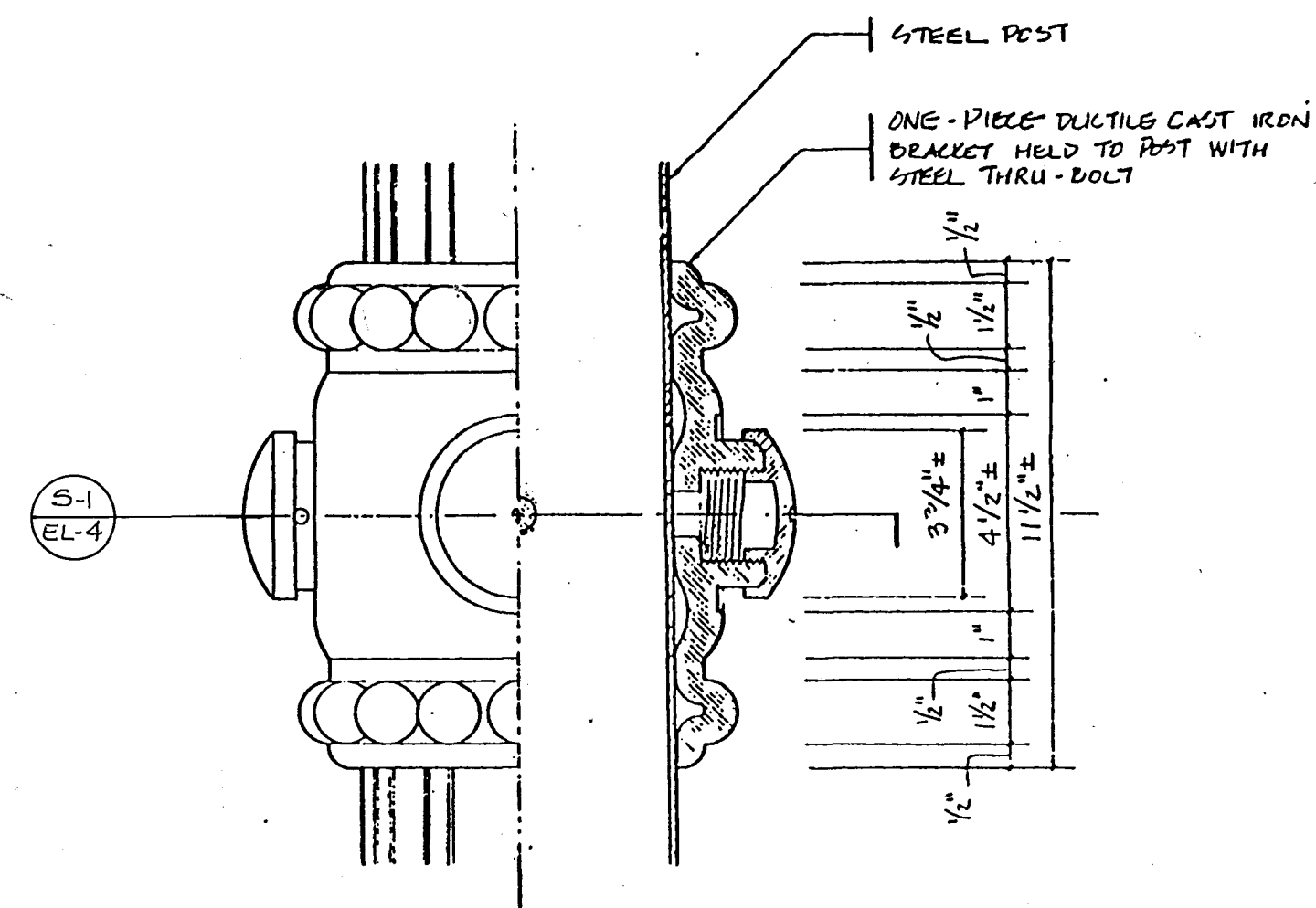


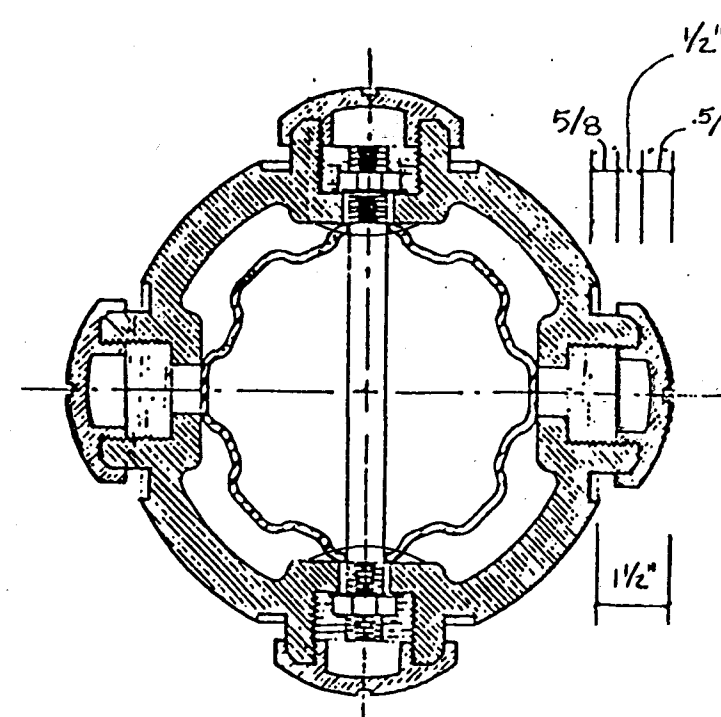
OCTAFLUTE SECTION

NOTES:

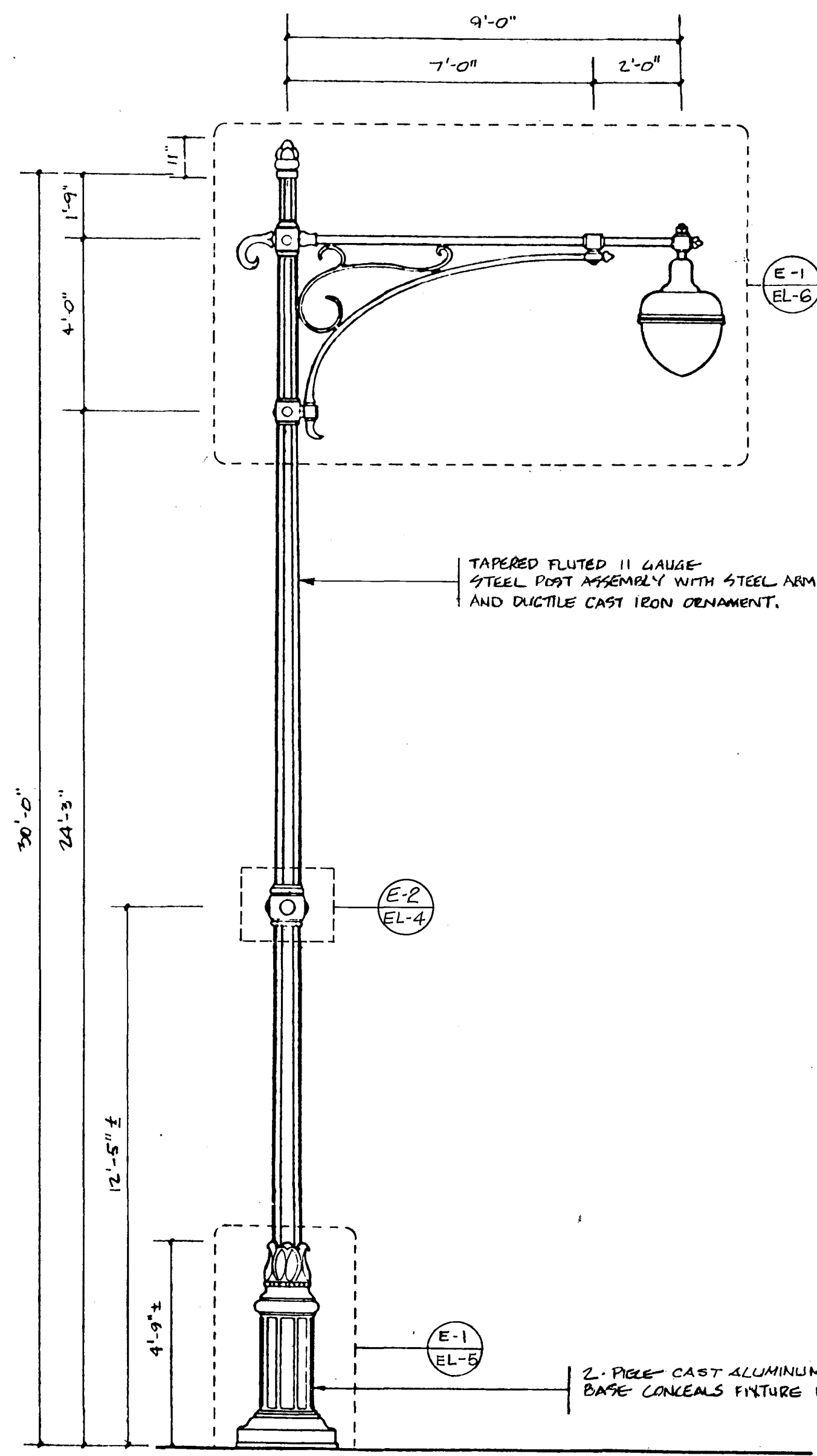
1. Octaflute section shown above may be used as an alternate.
2. Detailed shop drawings for all poles, brackets, bases, caps, ornaments and luminaire arms and all accessory connections shall be submitted for approval by the engineer and shall include all methods of assembly and connections.
3. Aluminum castings may be proposed by the contractor in place of ductile iron castings.



E-2 EL-4 ELEVATION / SECTION: INTERMEDIATE ORNAMENT



S-1 EL-4 SECTION



E-1 EL-4 LIGHTING STANDARD

CITY OF HARTFORD, CONNECTICUT DEPARTMENT OF PUBLIC WORKS TRANSPORTATION SERVICES BUREAU		
HNTB HOWARD NEEDLES TAMMEN & BERGENDOFF Architects / Engineers / Planners		Pat Loheed, Landscape Architect L.C. Associates, Inc. - Surveyor
HARTFORD PEDESTRIAN TRANSIT PROJECT		
ELECTRICAL PLAN-4 LIGHTING STANDARD DETAILS		
DESIGN E.A. GAYAMAT DRAWN R.E. OWOO CHECKED E.A. GAYAMAT	SCALE: AS NOTED	DAY BOOK NO.
DATE: 9-8-89		SHEET NO. EL-4

REVISION	MADE BY	CHECKED BY	DESCRIPTION