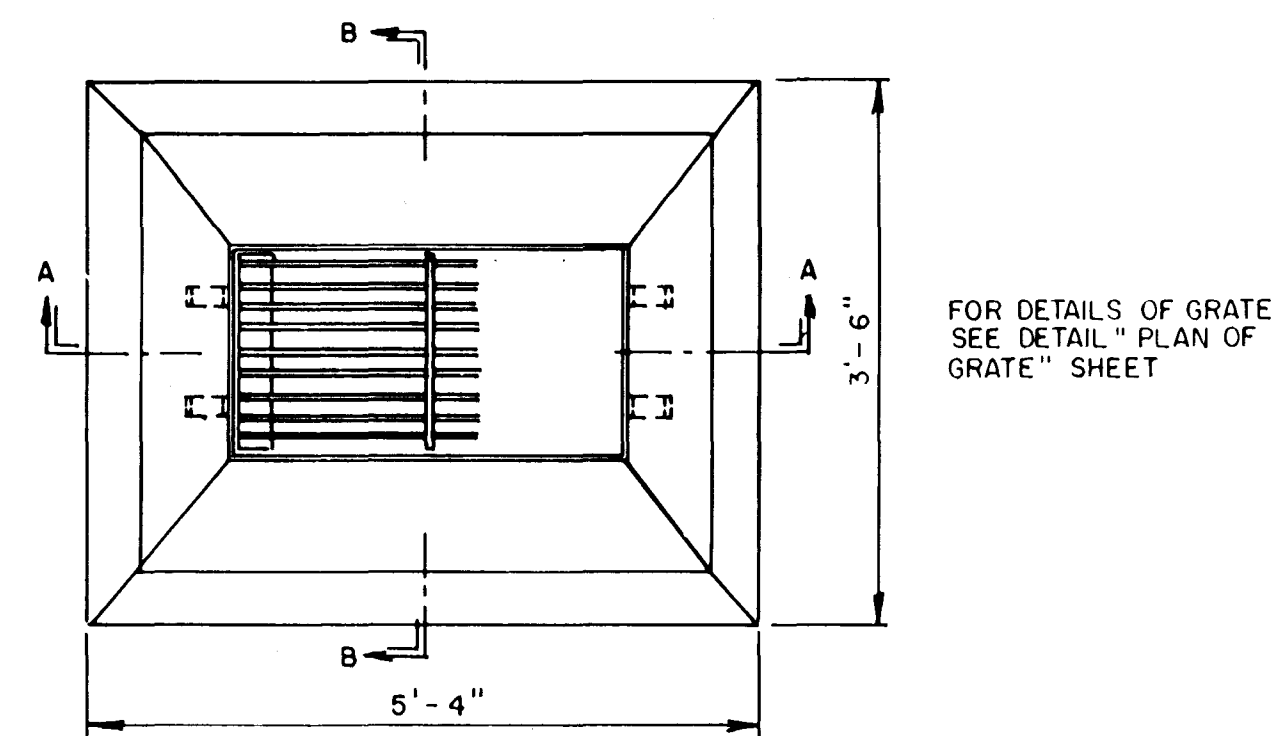
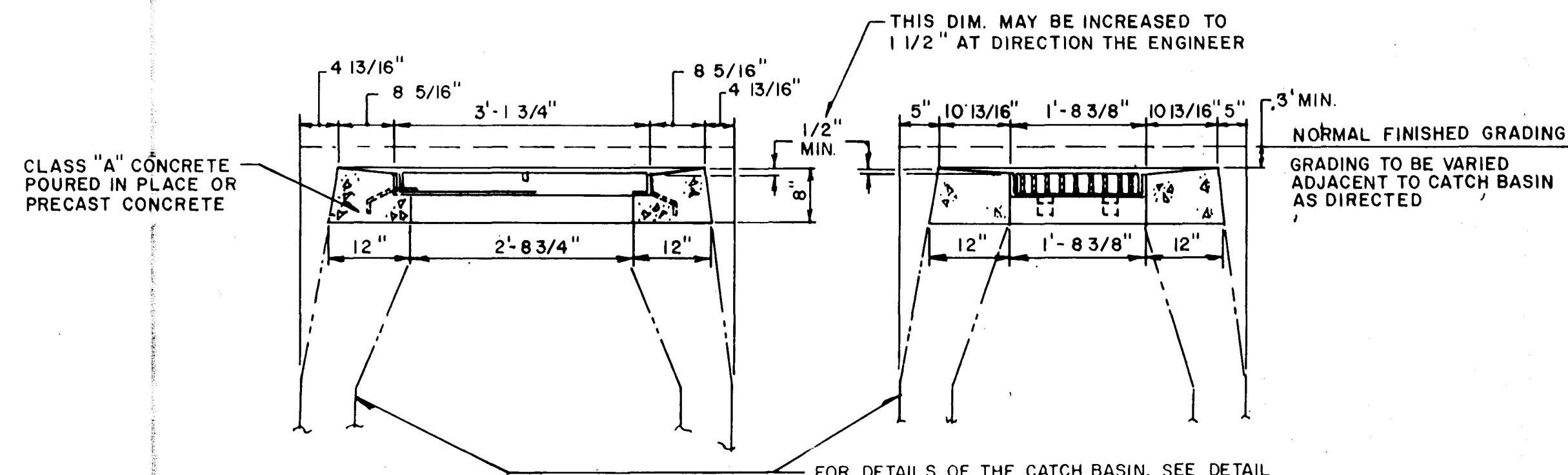


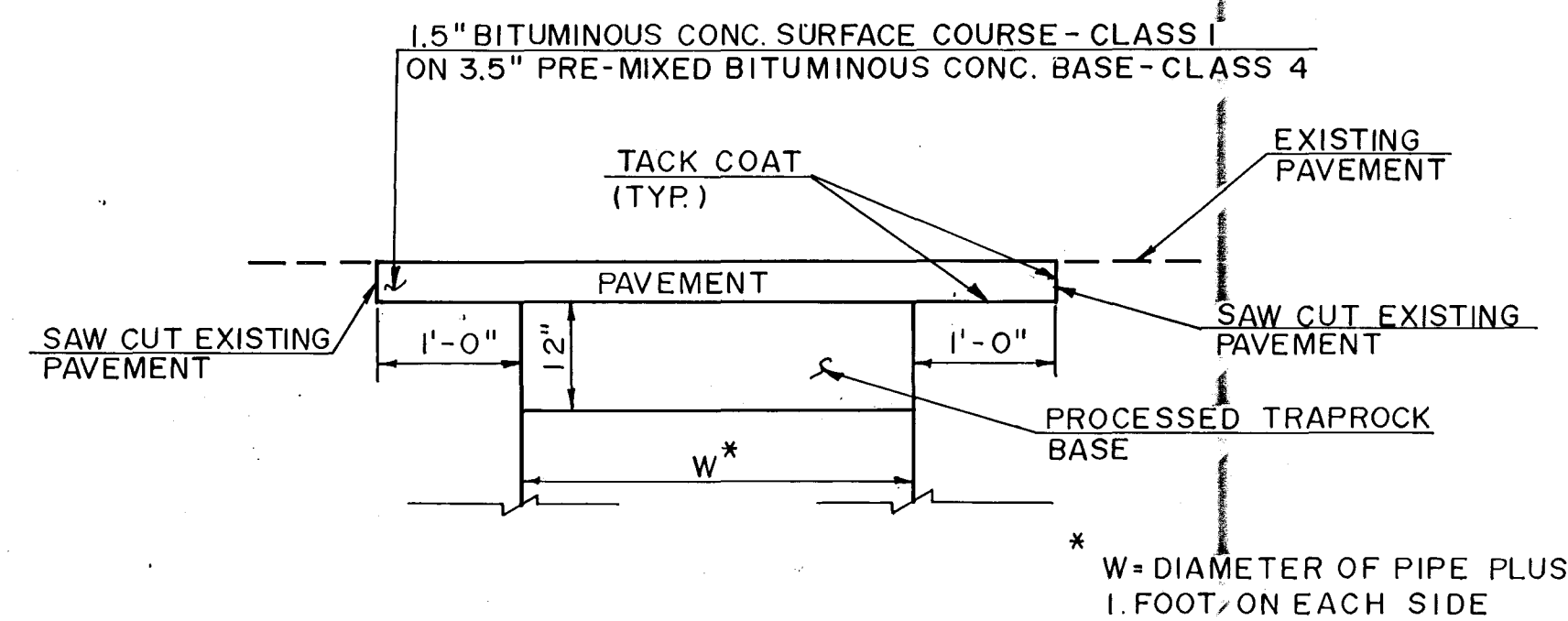
CITY MERESTONE



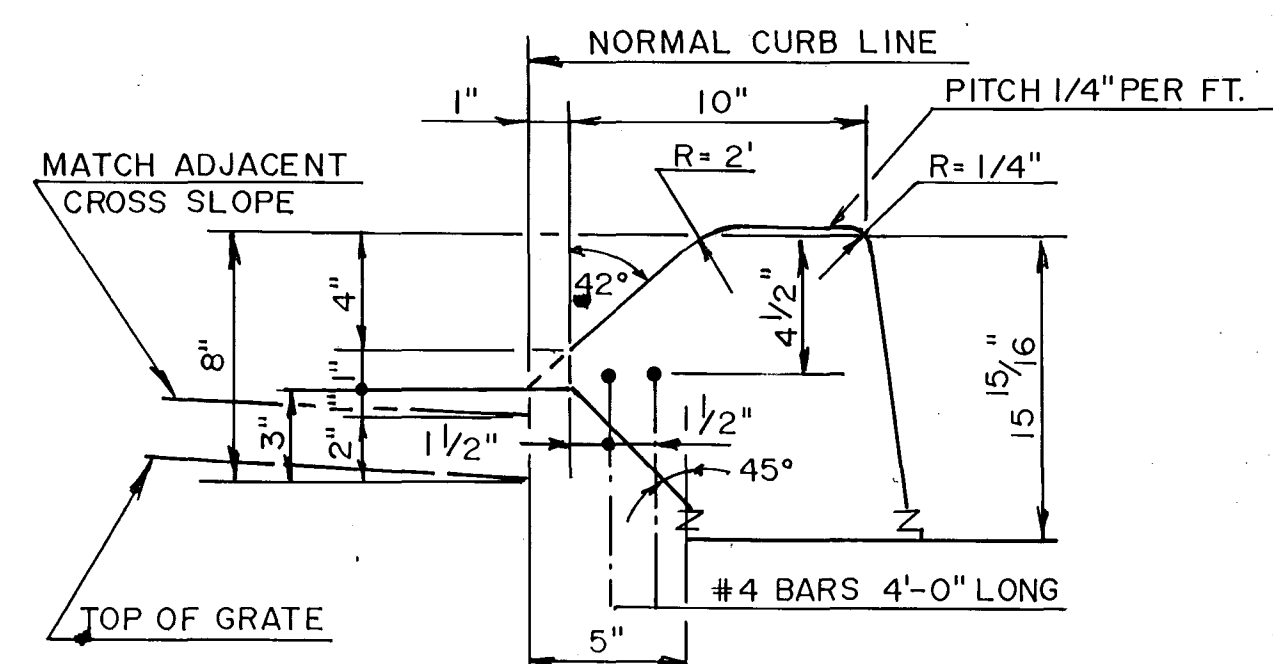
FOR DETAILS OF GRATE
SEE DETAIL " PLAN OF
GRATE" SHEET



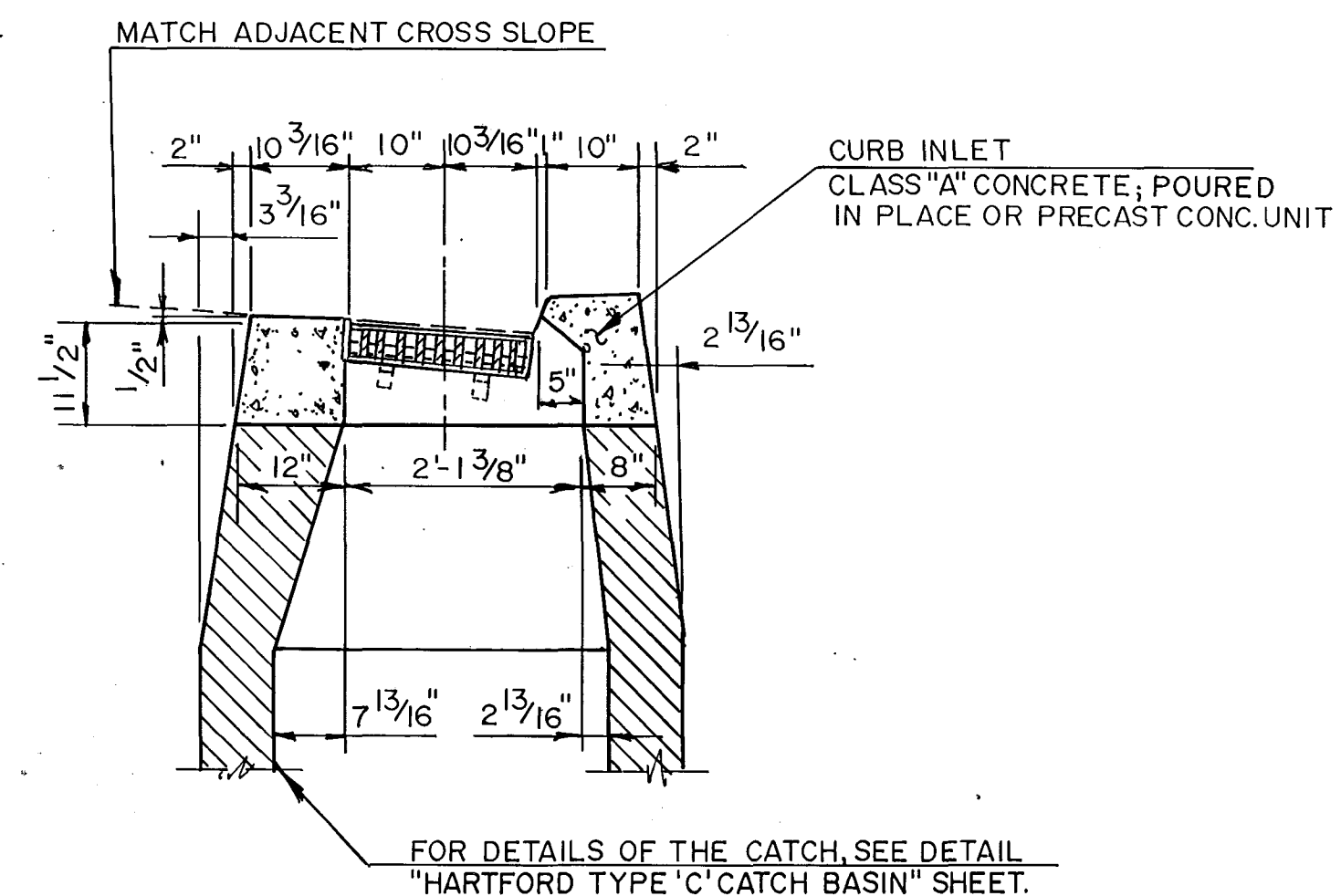
HARTFORD TYPE 'C-L' CATCH BASIN INLET



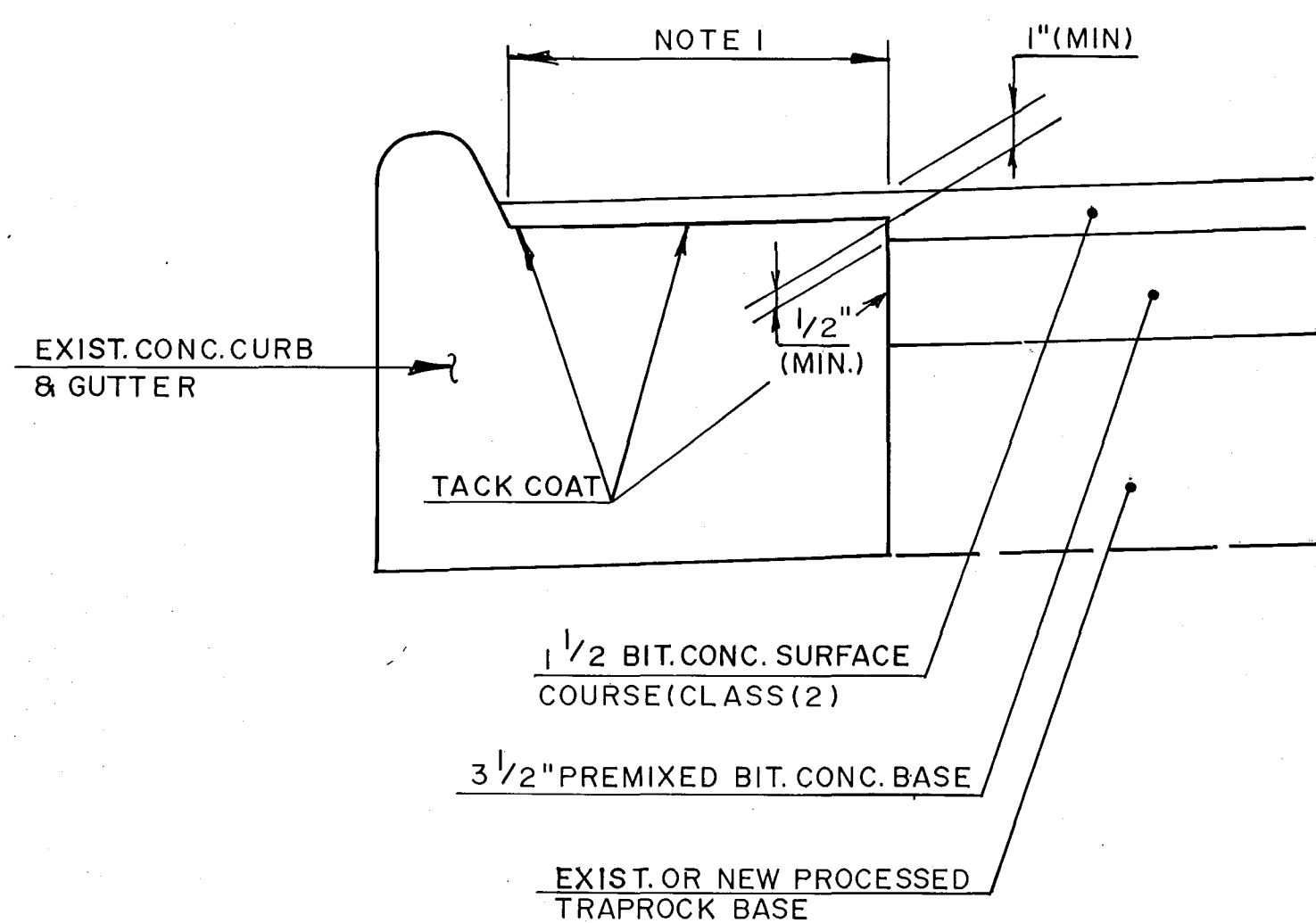
TYPICAL TREATMENT OF PERMANENT PAVEMENT REPLACEMENT



CURB INLET DETAIL
(BIT. CONC. LIP CURBING)

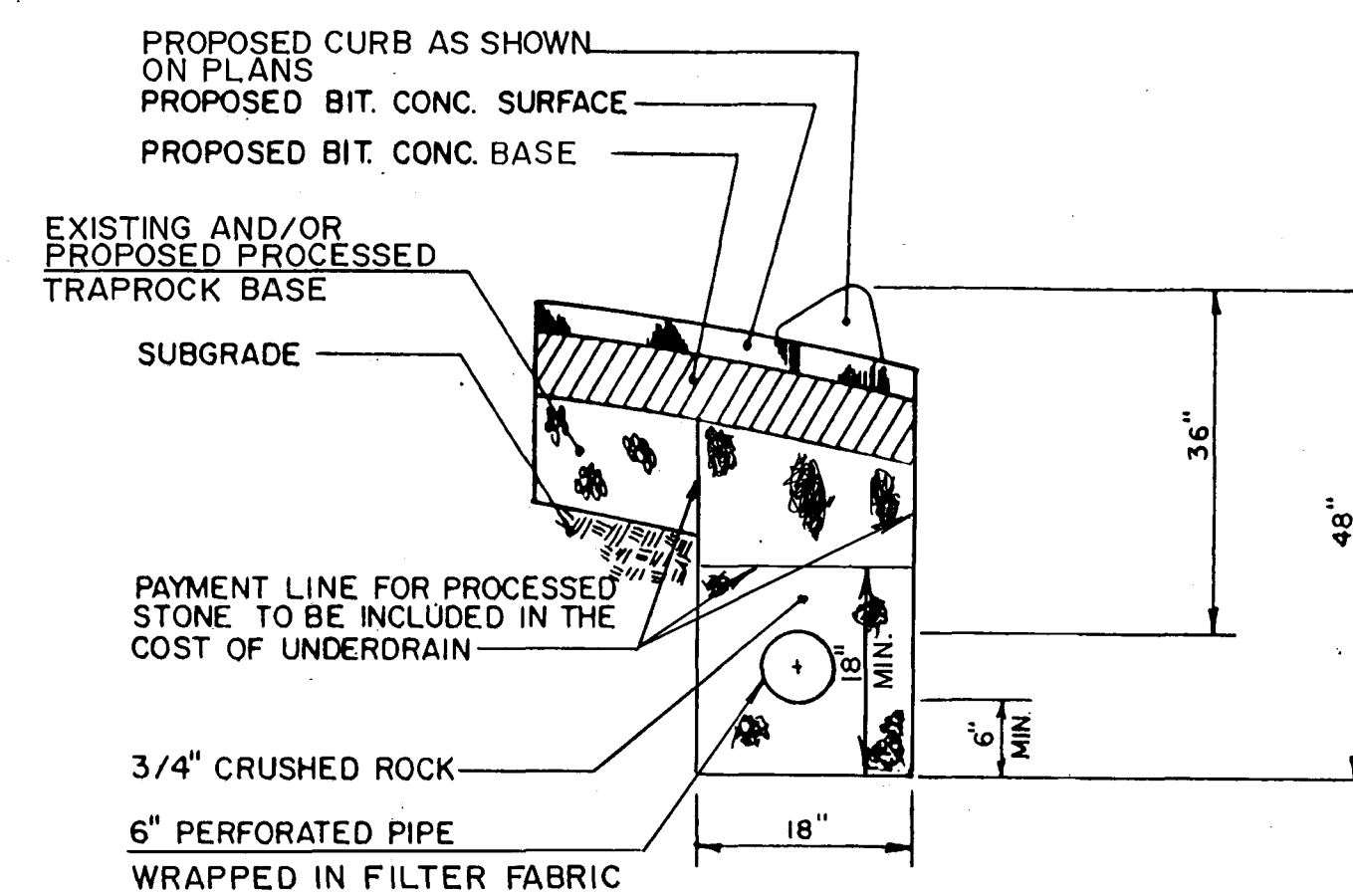


TYPE "C" CATCH BASIN



NOTE 1. REMOVE EXISTING BIT. CONC. SURFACE, CLEAN ALL CRACKS AND JOINTS, FILL WITH CRACK SEALER PRIOR TO APPLICATION OF TRACK COAT AND PLACEMENT OF BIT. CONC. WORK TO BE PAID UNDER BID ITEM 40D.

PAVING AT CONCRETE CURB & GUTTER



CURB UNDERDRAIN

CONSTRUCTION NOTES

1. WHEN EXCAVATING CLOSE TO TREES USE ONLY HAND TOOLS. CARE SHALL BE TAKEN TO ENSURE THAT TREE ROOTS ARE NOT DAMAGED IN ANY WAY. THE INSPECTOR SHALL BE NOTIFIED IMMEDIATELY WHENEVER TREE ROOTS ARE ENCOUNTERED. FURTHER EXCAVATING AT THAT LOCATION SHALL BE AS DIRECTED BY THE INSPECTOR.
2. CONTRACTOR SHALL INFORM UTILITY COMPANY OF REQUIRED POLE RELOCATION AND COORDINATE WORK WITH UTILITY COMPANY.
3. TOP OF CURB SHALL BE 6" ABOVE GUTTER GRADE UNLESS OTHERWISE NOTED.

NO.	DATE	REVISION	
DESIGNED: <u>A.M.</u>		DATE <u>JULY 6, 1990</u>	
DRAWN: <u>T.N.S.</u>			
CHECKED: <u>PL</u>			
APPROVED: <u>R.C.G.</u>		SCALE <u>N.T.S.</u>	

CONTRACT NO. E90-24

MISCELLANEOUS DETAILS

THE CITY OF
HARTFORD, CONNECTICUT

PURCELL
ASSOCIATES

SHEET NO.
5 OF 11

AYBOOK NO.
011212

602/5