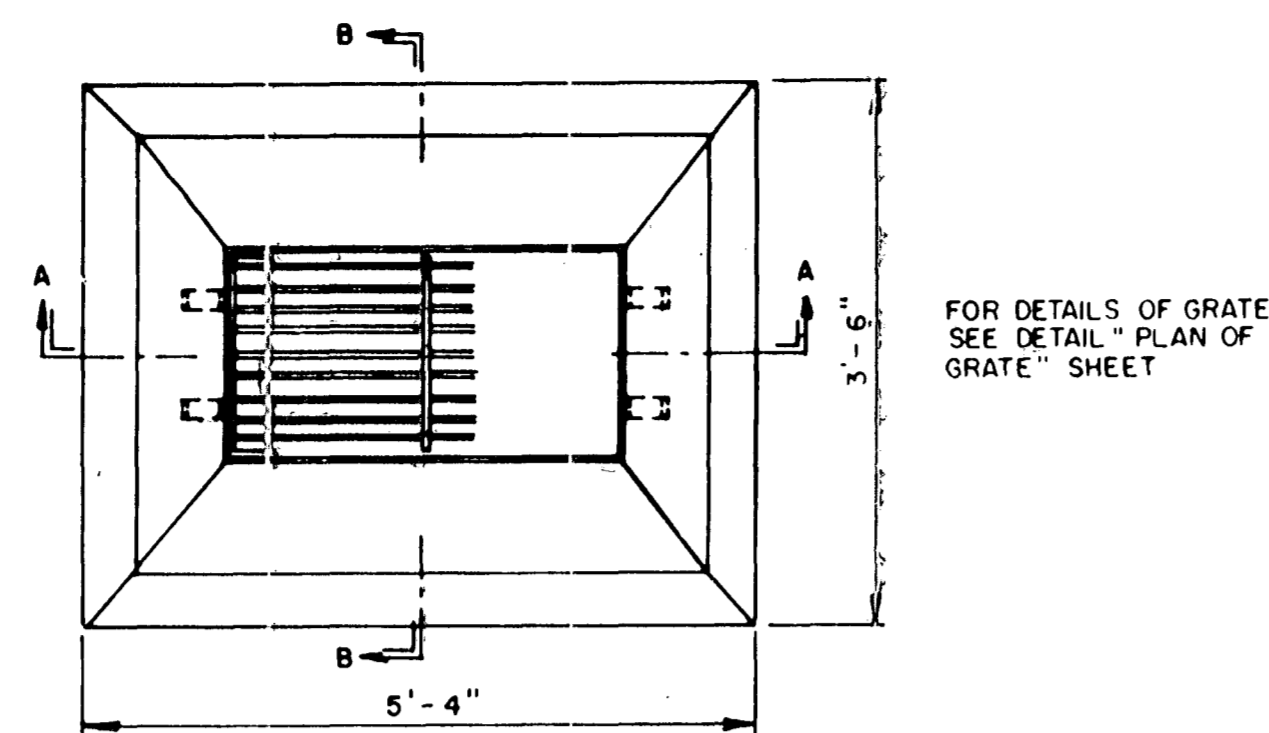
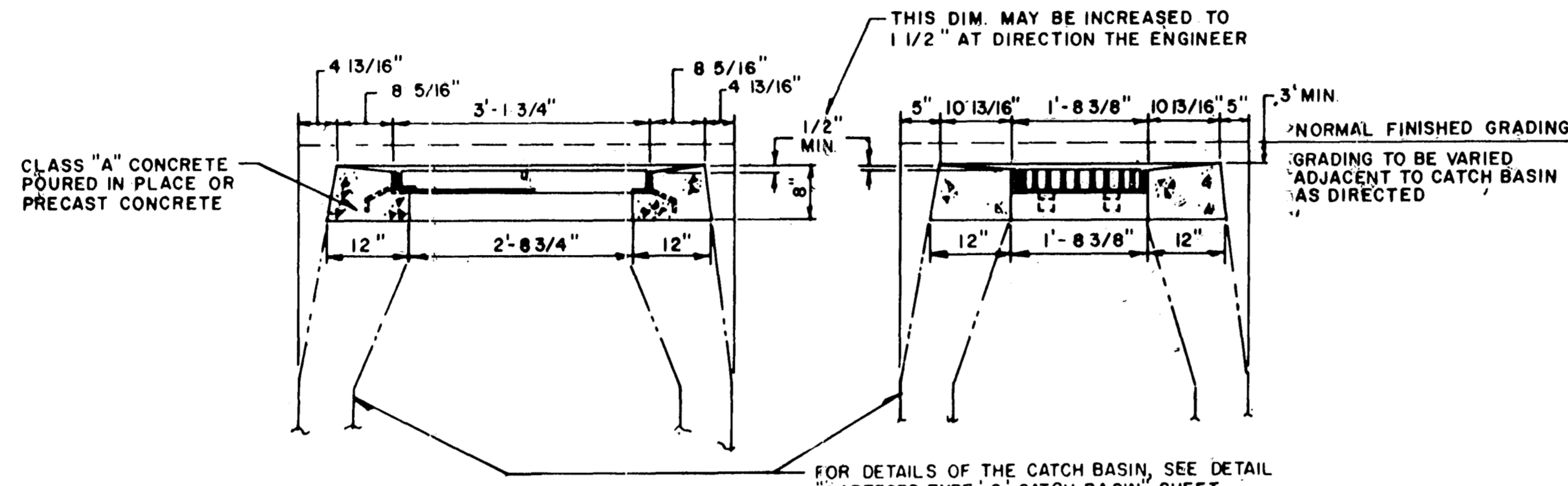


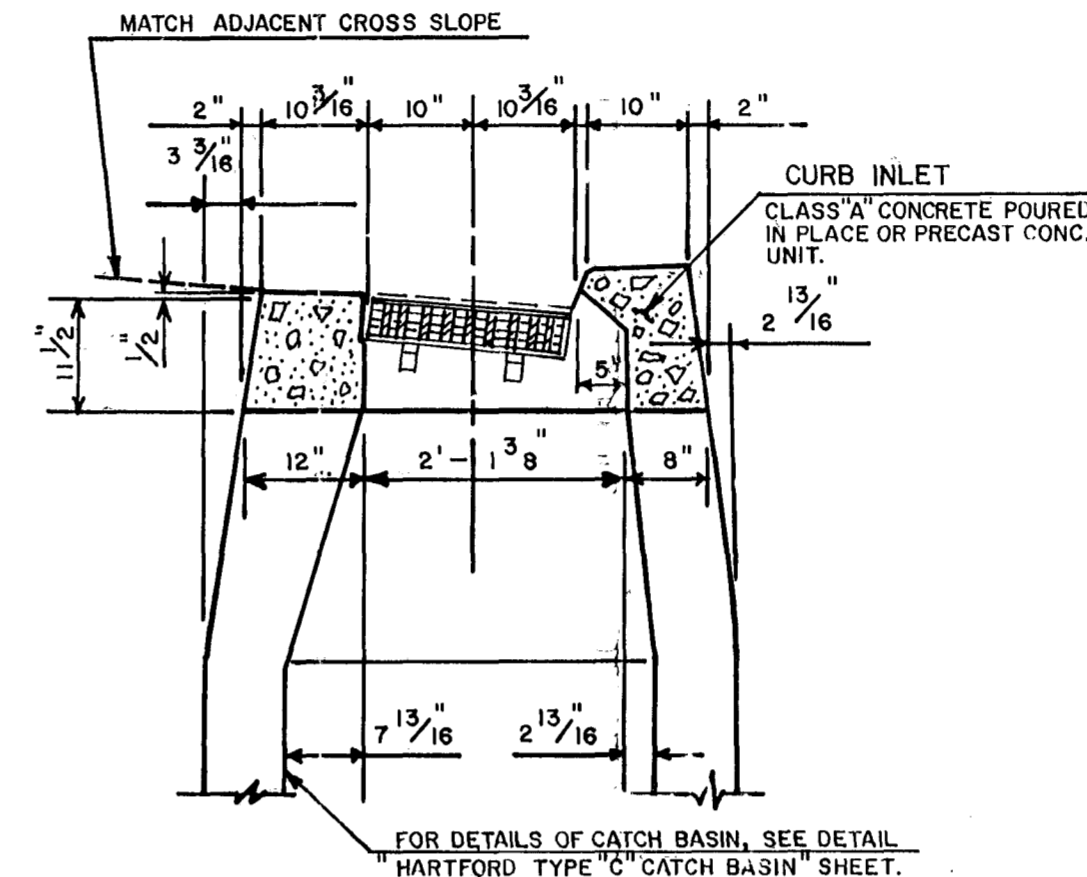
CITY MERESTONE



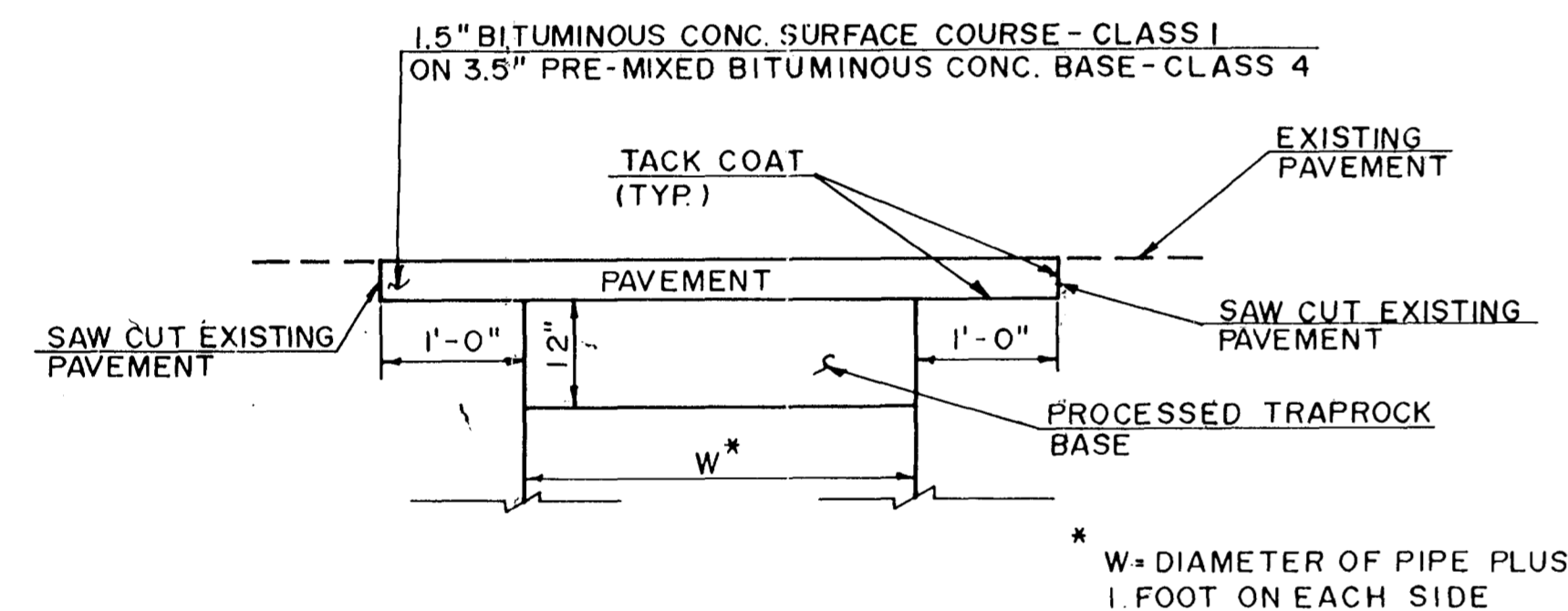
FOR DETAILS OF GRATE  
SEE DETAIL "PLAN OF  
GRATE" SHEET



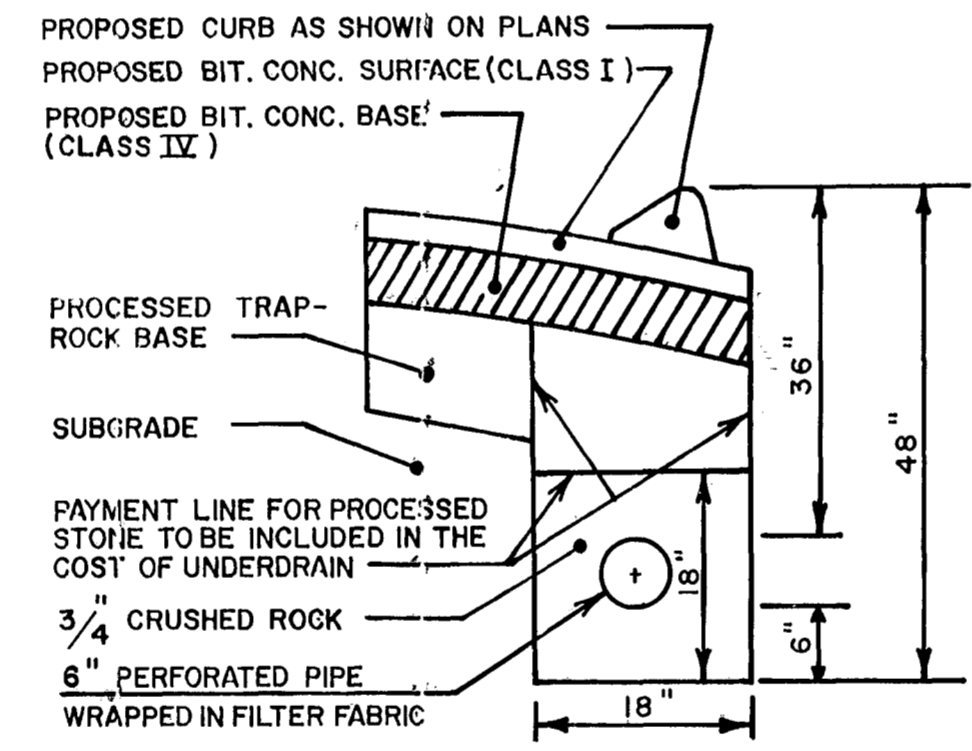
HARTFORD TYPE 'C-L' CATCH BASIN INLET



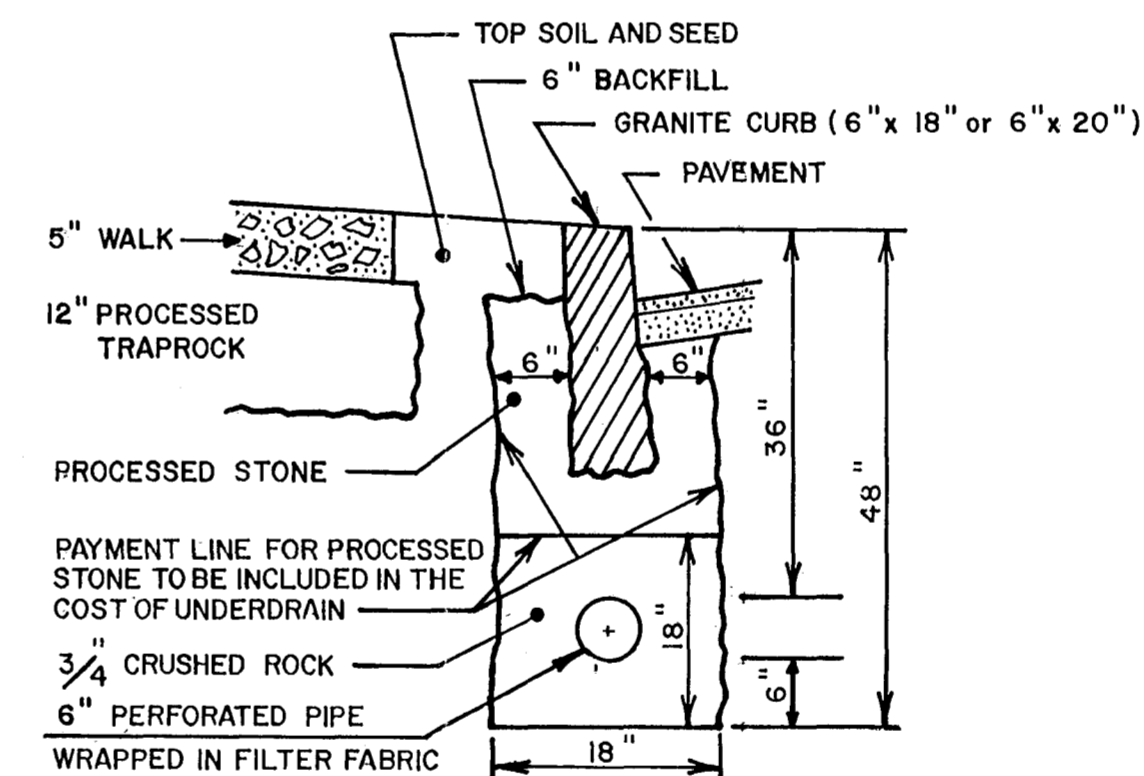
TYPE "C" CATCH BASIN



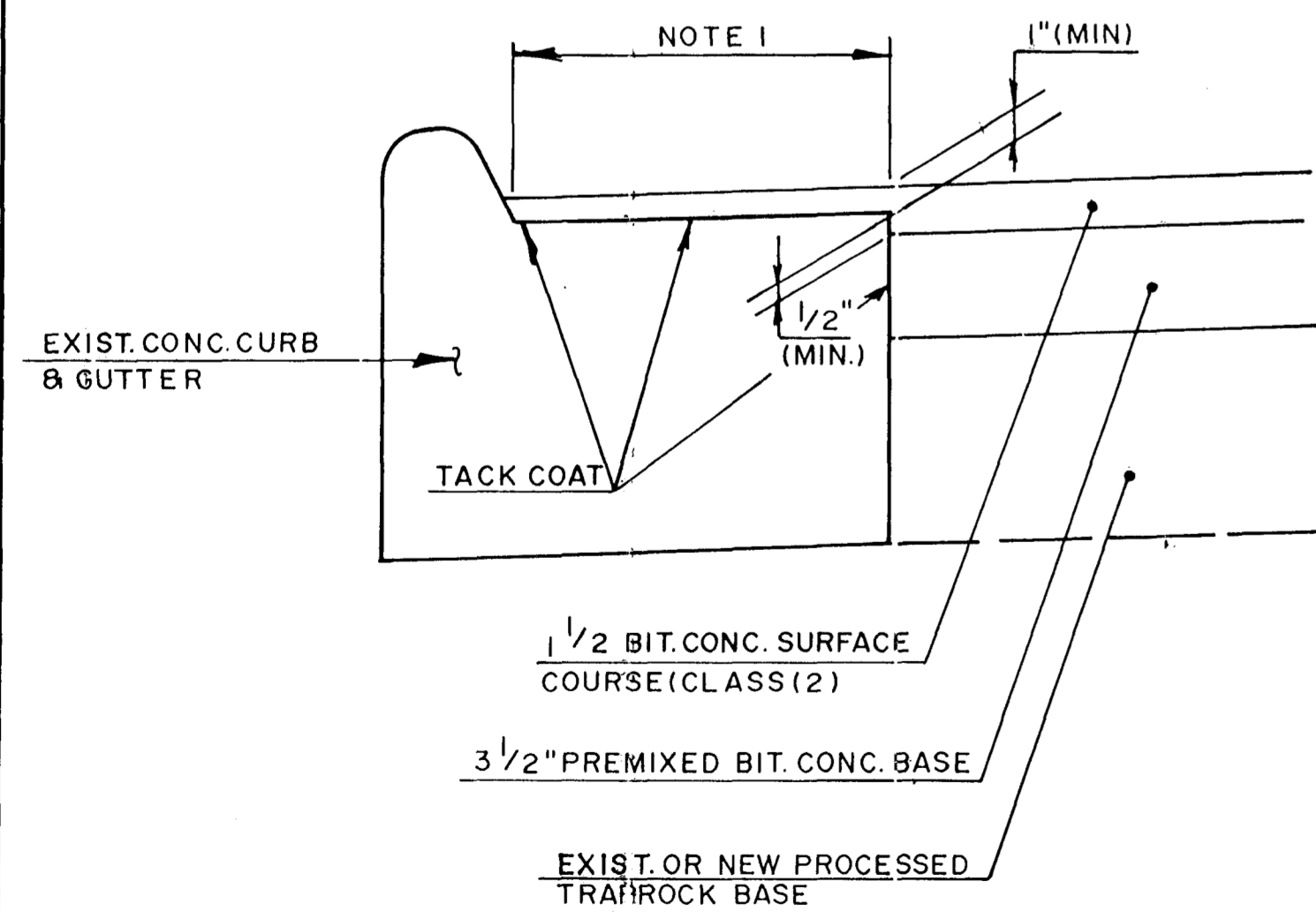
TYPICAL TREATMENT OF PERMANENT  
PAVEMENT REPLACEMENT



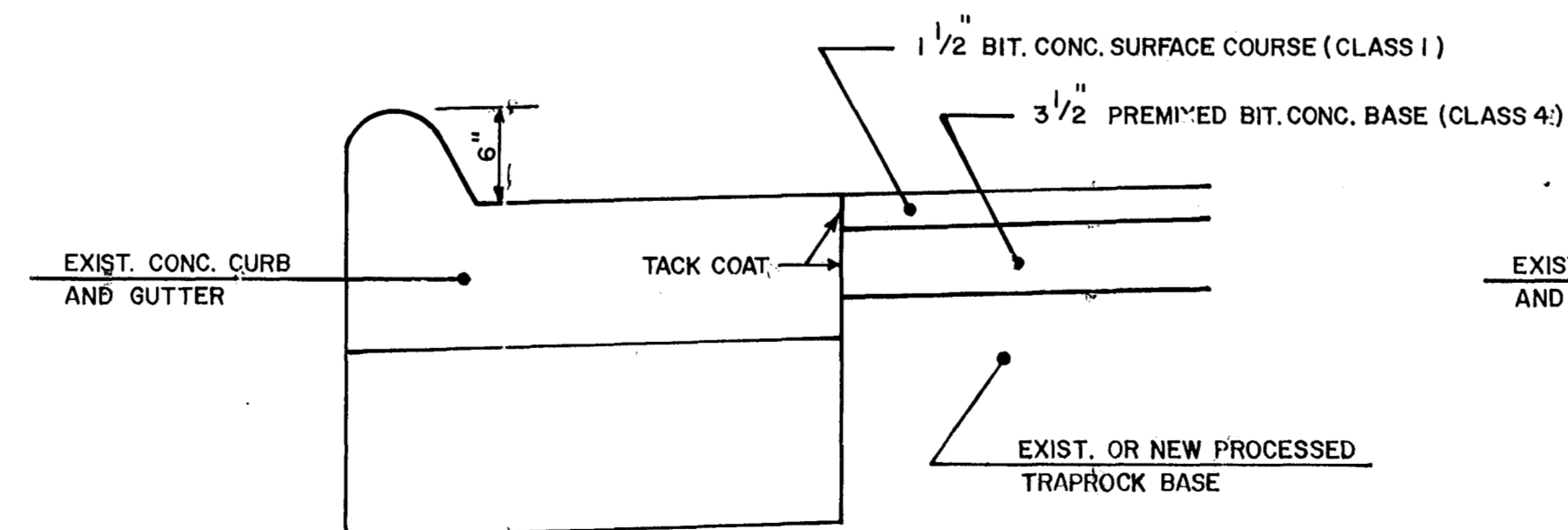
CURB UNDERDRAIN  
FOR BIT. CURB



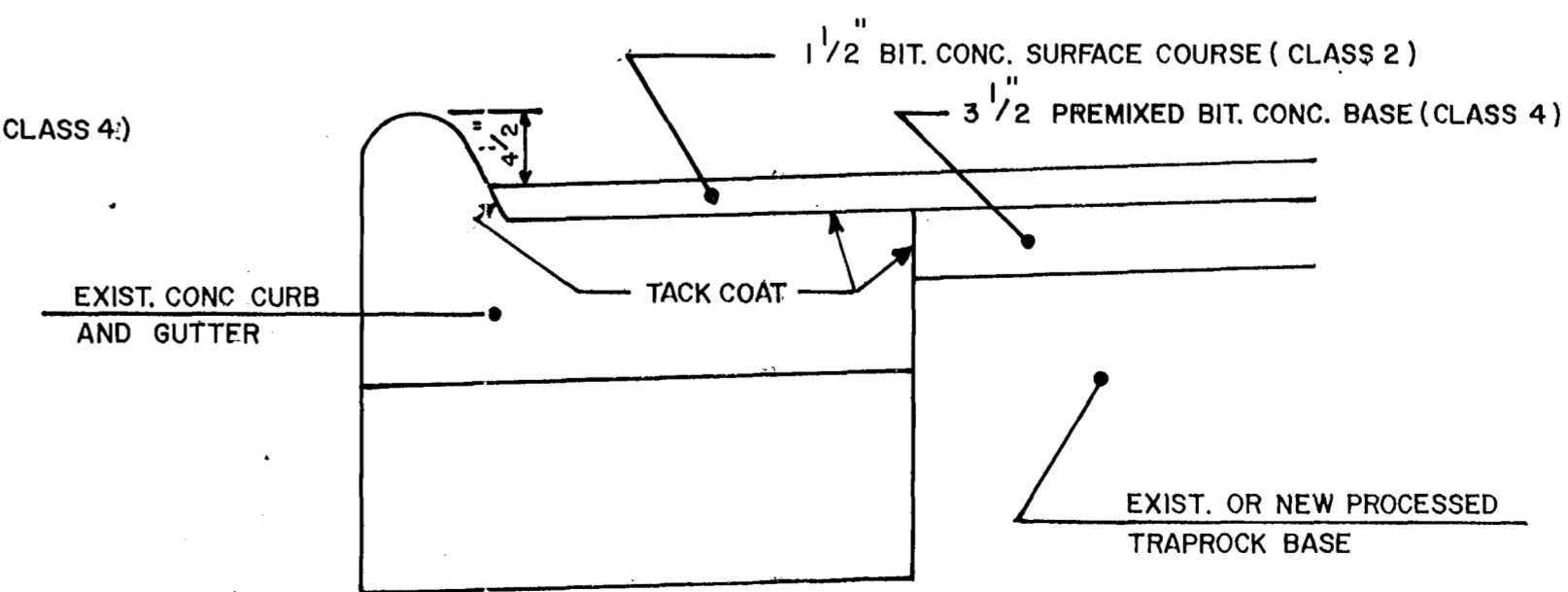
CURB UNDERDRAIN  
FOR GRANITE CURB



PAVING AT CONCRETE CURB & GUTTER



PAVING AT CONCRETE CURB AND GUTTER  
WITH 6\"/>



PAVING AT CONCRETE CURB AND GUTTER  
WITH 4 1/2\"/>

- CONSTRUCTION NOTES**
1. WHEN EXCAVATING CLOSE TO TREES, USE ONLY HAND TOOLS. CARE SHALL BE TAKEN TO ENSURE THAT TREE ROOTS ARE NOT DAMAGED IN ANY WAY. THE INSPECTOR SHALL BE NOTIFIED IMMEDIATELY WHENEVER TREE ROOTS ARE ENCOUNTERED. FURTHER EXCAVATING AT THAT LOCATION SHALL BE AS DIRECTED BY THE INSPECTOR.
  2. CONTRACTOR SHALL INFORM UTILITY COMPANY OF REQUIRED POLE RELOCATION AND COORDINATE WORK WITH UTILITY COMPANY.
  3. TOP OF CURB SHALL BE 6" ABOVE GUTTER GRADE UNLESS OTHERWISE NOTED.

NOTE 1. REMOVE EXISTING BIT. CONC. SURFACE, CLEAN ALL CRACKS AND JOINTS, FILL WITH CRACK SEALER PRIOR TO APPLICATION OF TACK COAT AND PLACEMENT OF BIT. CONC. WORK TO BE PAID UNDER BID ITEM 47C.

CITY OF HARTFORD, CONNECTICUT DEPARTMENT OF PUBLIC WORKS BUREAU OF ENGINEERING SERVICES		
STANDARD DETAILS SHEET II		
SUBMITTED <i>John F. Bostick</i>	RECOMMENDED <i>Sam F. Sen</i> DIVISION MANAGER	APPROVED <i>Anthony Renard</i> CITY ENGINEER, ESB
DRAWN	SCALE NOT TO SCALE	DAYBOOK NO. DATE NOVEMBER 1989
CHECKED		

SHEET  
5  
OF 12