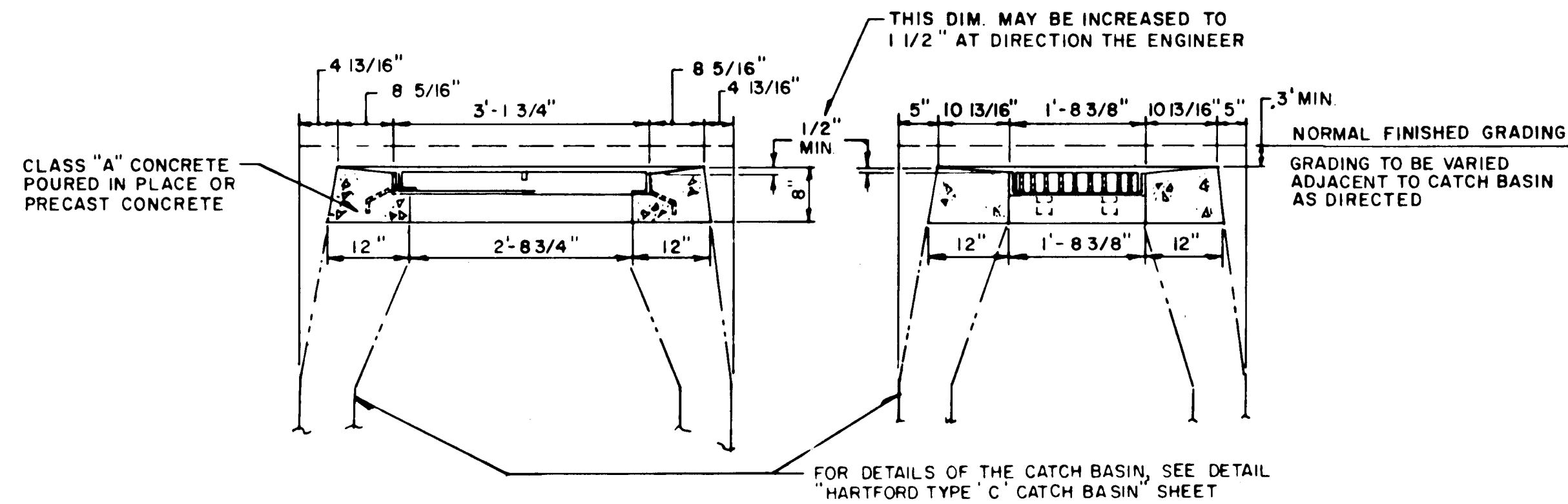
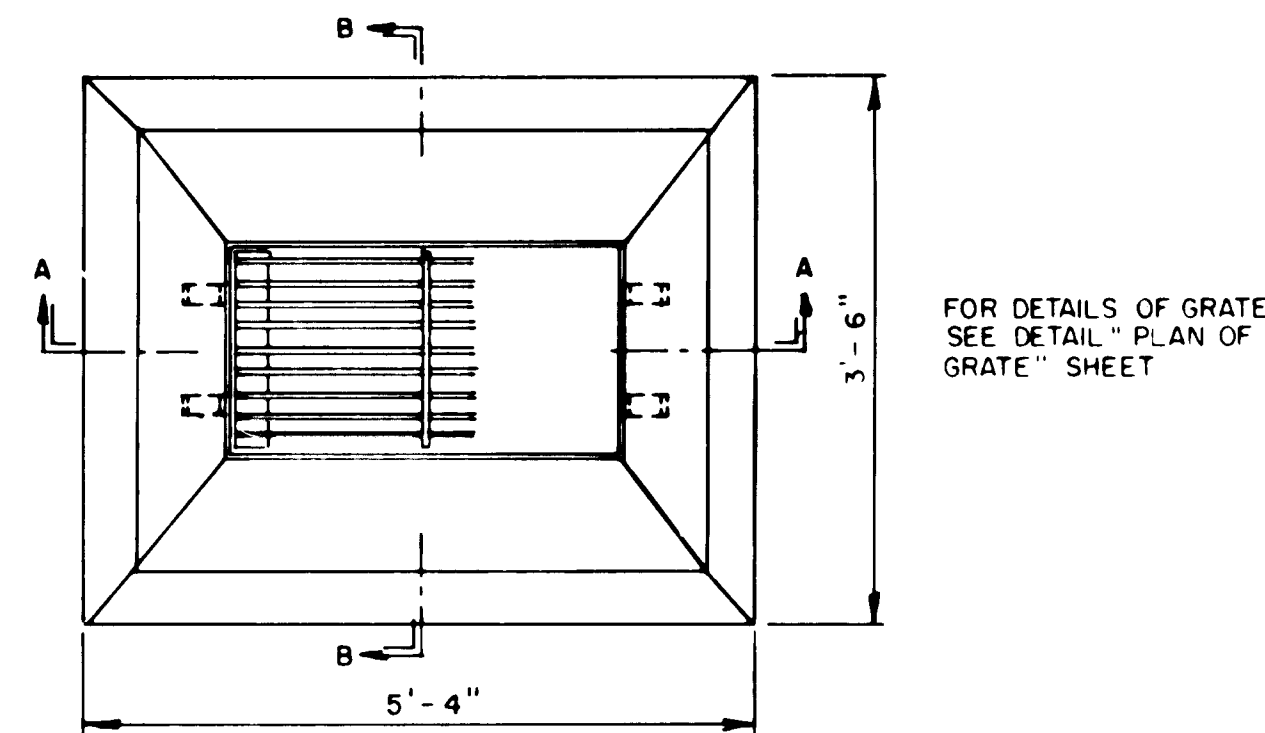
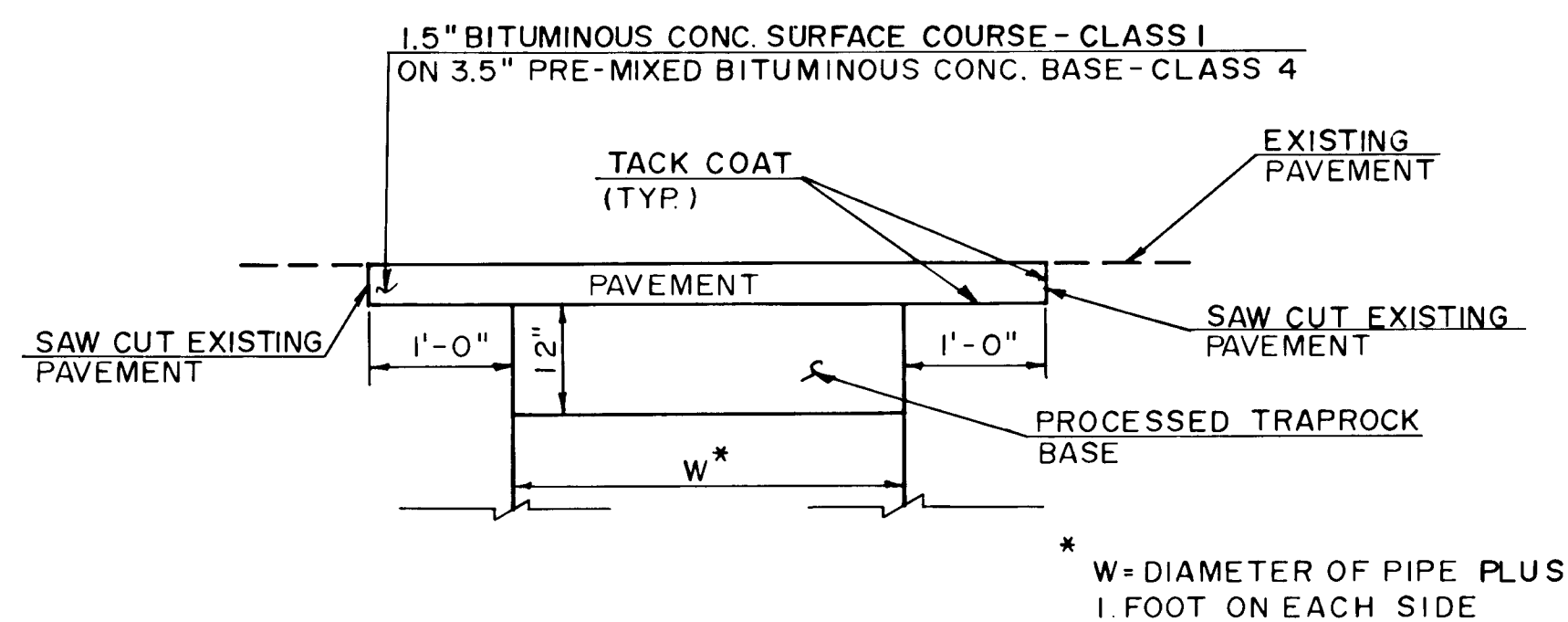


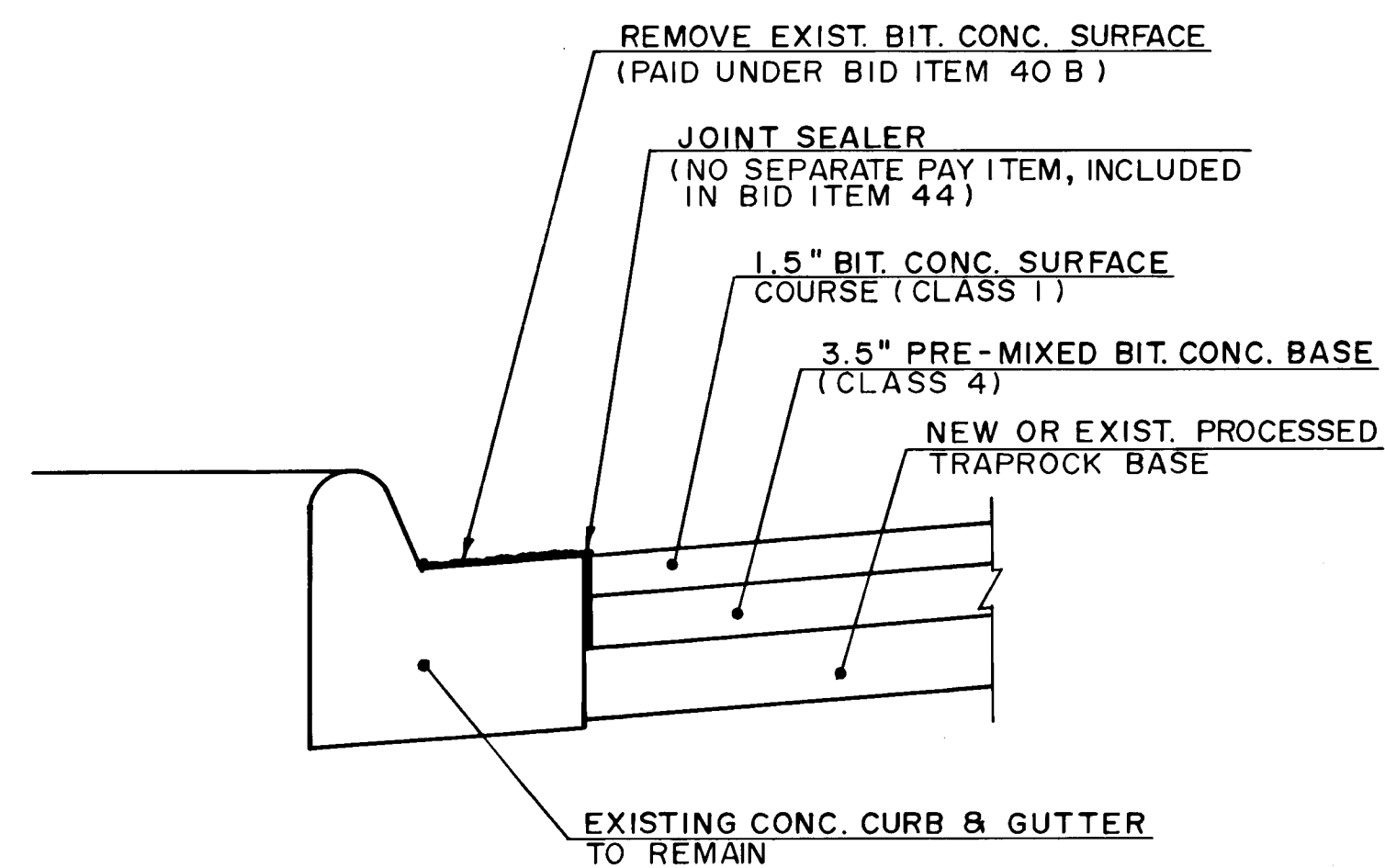
CITY MERESTONE



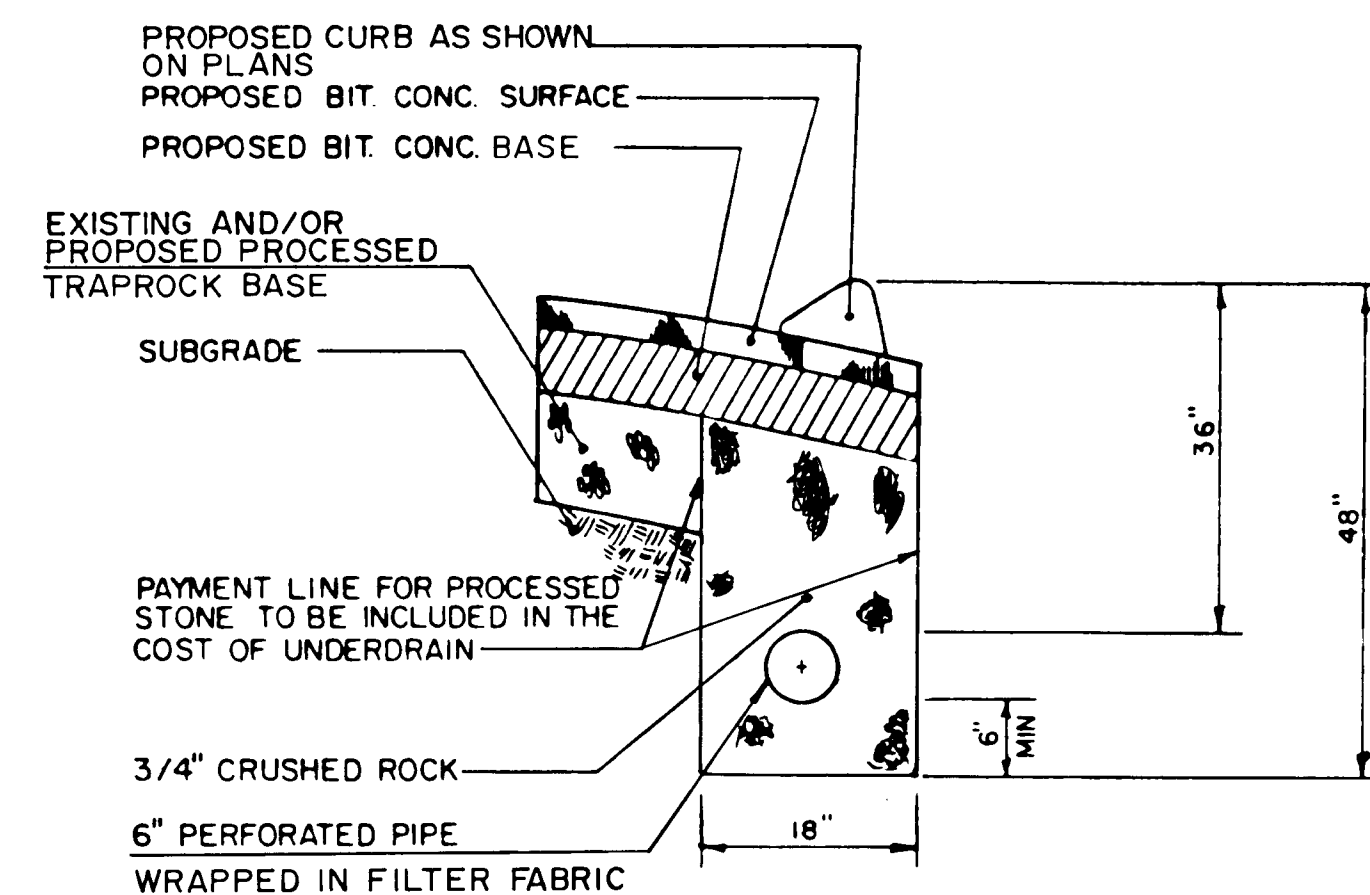
HARTFORD TYPE 'C-L' CATCH BASIN INLET



TYPICAL TREATMENT OF PERMANENT PAVEMENT REPLACEMENT



PAVING DETAIL AT EXISTING CONCRETE CURB AND GUTTER



CURB UNDERDRAIN

CONSTRUCTION NOTES

1. INSTALL 6' OF 6"x18" GRANITE CURB ON EACH SIDE OF CATCH BASINS.
2. WHEN EXCAVATING CLOSE TO TREES, USE ONLY HAND TOOLS. CARE SHALL BE TAKEN TO ENSURE THAT TREE ROOTS ARE NOT DAMAGED IN WAY. THE INSPECTOR SHALL BE NOTIFIED IMMEDIATELY WHENEVER TREE ROOTS ARE ENCOUNTERED. FURTHER EXCAVATING AT THAT LOCATION SHALL BE AS DIRECTED BY THE INSPECTOR.
3. CONTRACTOR SHALL INFORM UTILITY COMPANY OF REQUIRED POLE RELOCATION AND COORDINATE WORK WITH UTILITY COMPANY.
4. TOP OF CURB SHALL BE 6" ABOVE GUTTER GRADE UNLESS OTHERWISE NOTED.
5. SALVAGE ALL STRAIGHT GRANITE CURB ON OTIS STREET AND USE IT AT EACH SIDE OF EXIST. CATCH BASINS ON: OTIS ST., STANWOOD ST., ROOSEVELT ST., EXETER ST., ARNOLD ST., AND GRANT ST. THIS WORK SHALL BE PAID FOR AT THE CONTRACT UNIT PRICE PER LINEAR FOOT FOR "RESET STRAIGHT GRANITE CURB ON NEW FOUNDATION."

CONTRACT NO. E88-07 AREA II

MISCELLANEOUS DETAILS

THE CITY OF
HARTFORD, CONNECTICUT

PURCELL
ASSOCIATES

SHEET NO.
8 OF 48
DAYBOOK NO.
01113

NO.	DATE	REVISION
1	JAN 90	AS BUILT
2	MARCH 23, 1988	DATE
3	N.T.S.	SCALE
4	R.C.G.	APPROVED