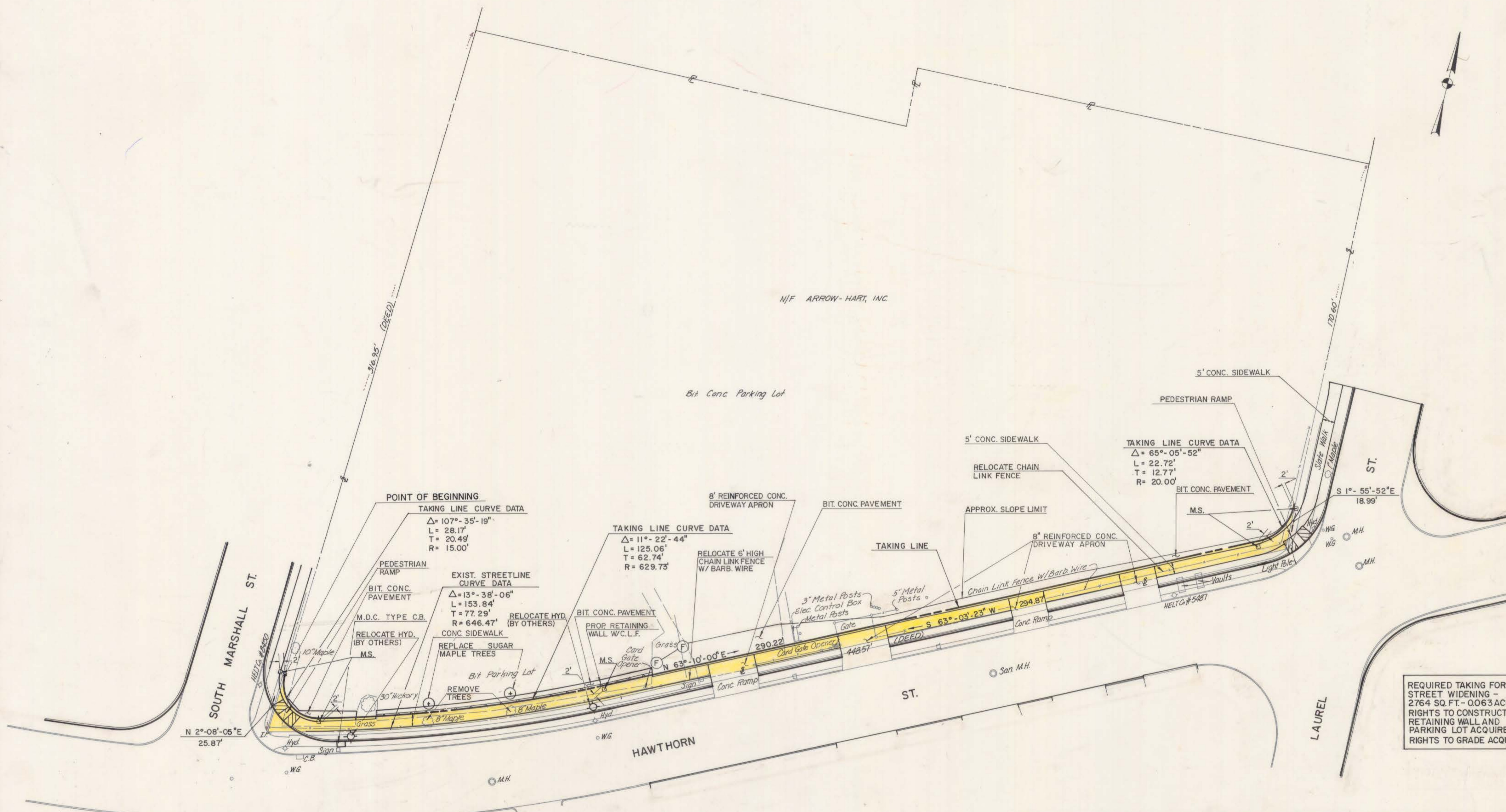
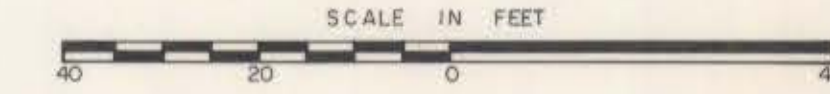


517/12

517/12



517/12

517/12

I hereby certify that this map and survey were prepared in accordance with the standards of a Class D survey as defined in the Code of Practice for Standards of Accuracy of Surveys and Maps, adopted December 10, 1975 as amended by the Connecticut Association of Land Surveyors, Inc.

Date: 7-8-1982 J.J.S. P.E. & L.S. # 5051 DAYBOOK NO. 011185

REVISION	MADE BY	CHECKED BY	DESCRIPTION
DESIGNED BY: R.C.R.			SCALE
DRAWN BY: A.M.F.			1" = 20'
CHECKED BY: J.J.S.			
CONTRACT NO. E 82-26		CEM NO. 4024	
		JUNE 8, 1982	DATE

CITY OF HARTFORD, CONNECTICUT

MAP SHOWING LAND TO BE ACQUIRED FROM

N/F ARROW-HART INC.

BY

THE CITY OF HARTFORD

MAGUIRE

Engineers - Planners

CE MAGUIRE, INC.

New Britain, Connecticut