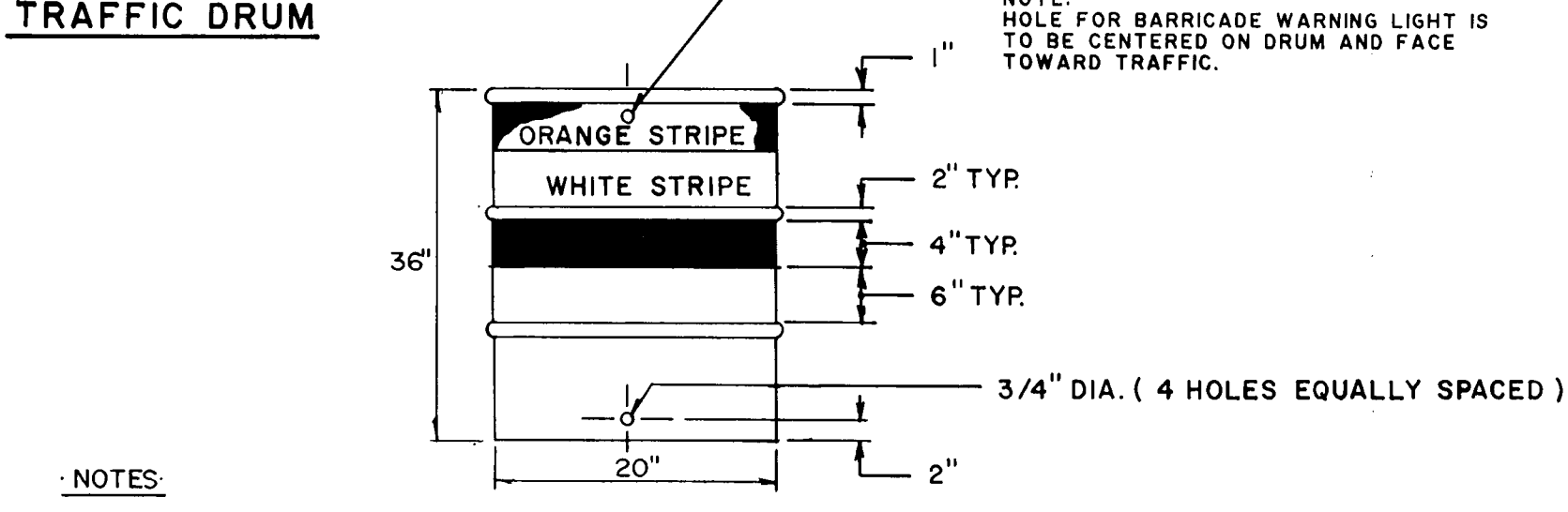


TRAFFIC PHASING PLAN

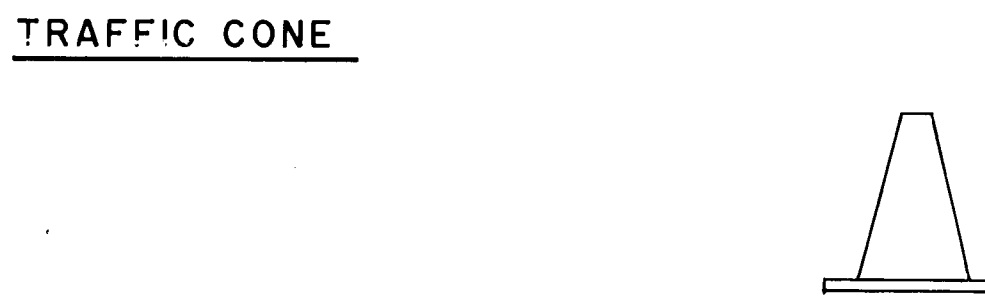
- LEGEND:**
- RC = STREET LEGALLY CLOSED
 - L = DETOUR (LEFT)
 - R = DETOUR (RIGHT)
 - CA = ROAD CLOSED AHEAD
 - LT = LOCAL TRAFFIC ONLY
- Work Schedule**
- STEP 1. Remove / reset curbing (as req.)
 - STEP 2. Const. prop. conc. sidewalk and driveways.
 - STEP 3. Const. catch basin / underdrain.
 - STEP 4. Excavate.
 - STEP 5. Replace processed stone subbase (for total reconstruction) Reconstituted base course (for alternate bid item)
 - STEP 6. Adjust existing utilities / catch basin to grade
 - STEP 7. Place pre-mix bit. conc. binder course
 - STEP 8. Place bit. conc. surface course and const. b.c.l.c.

- TOTAL RECONSTRUCTION**
(Refer to work schedule)
- COTSWOLD STREET**
From Overlook Terrace to Homewood Place
From Homewood Place to Community Place
From Community Place to Overlook Terrace
- WATERFORD STREET**
From Montrose Street to Overlook Terrace
- STRIP EXISTING BIT. CONC. SURFACE**
(Refer to work schedule except step 5, "grade, repair and compact base as required.")
- GIDDINGS STREET**
From New Britain Avenue to Dexter Street
- HARVARD STREET**
From Mountain Street to Freeman Street
From Freeman Street to White Street
- PRINCETON STREET**
From Roger Street to Hillside Avenue
- ROGER STREET**
From Amherst Street to Exeter Street
From Colby Street to White Street
From White Street to Oliver Street

* On streets narrower than 30', this work shall be done on one side at a time.

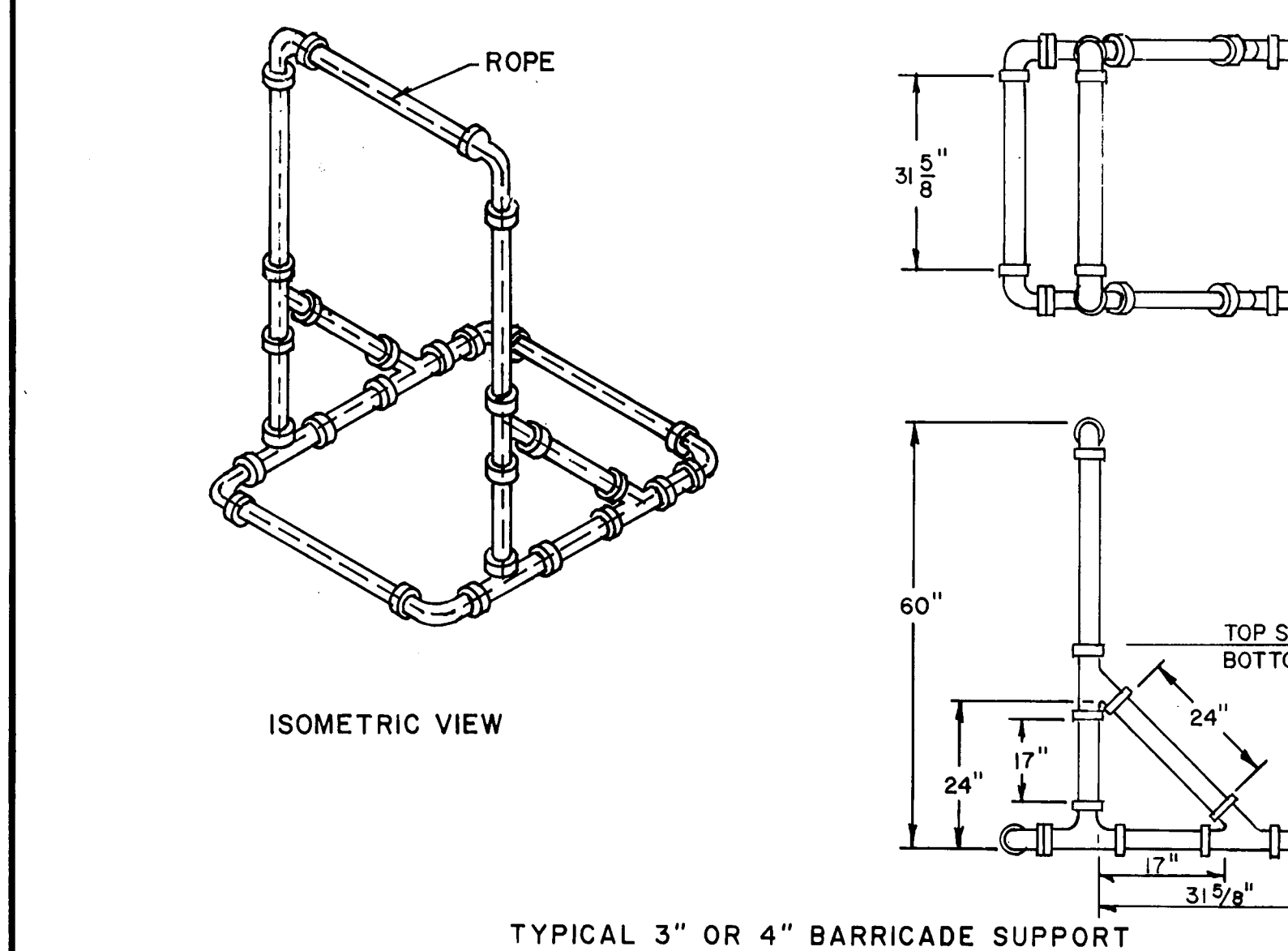


- NOTES:**
- TRAFFIC DRUMS MAY BE CONSTRUCTED OF STEEL OR PLASTIC.
 - TRAFFIC DRUM SHALL BE DESIGNED IN ACCORDANCE WITH THE SPECIFICATIONS.
 - THE ENGINEER RESERVES THE RIGHT TO REJECT ANY DRUM HE DEEMS NOT SUITABLE FOR PURPOSE INTENDED.
 - THE WHITE STRIPES SHALL BE REFLECTIVE SHEETING - ENCAPSULATED LENS.
 - REFLECTORIZED STRIPES SHOULD NOT BE PLACED OVER THE PROFILING CIRCUMFERENTIAL RIBS OF THE DRUM.
 - THOSE SECTIONS OF DRUM NOT COVERED WITH REFLECTORIZED STRIPES SHALL BE ORANGE, IN COLOR.

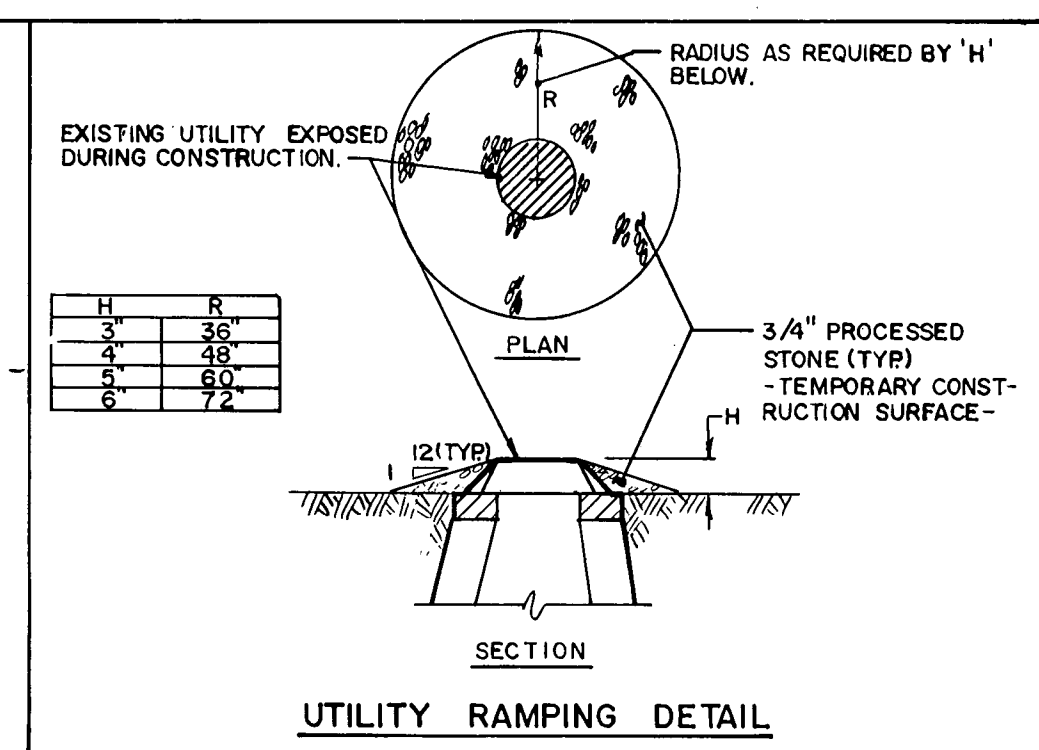
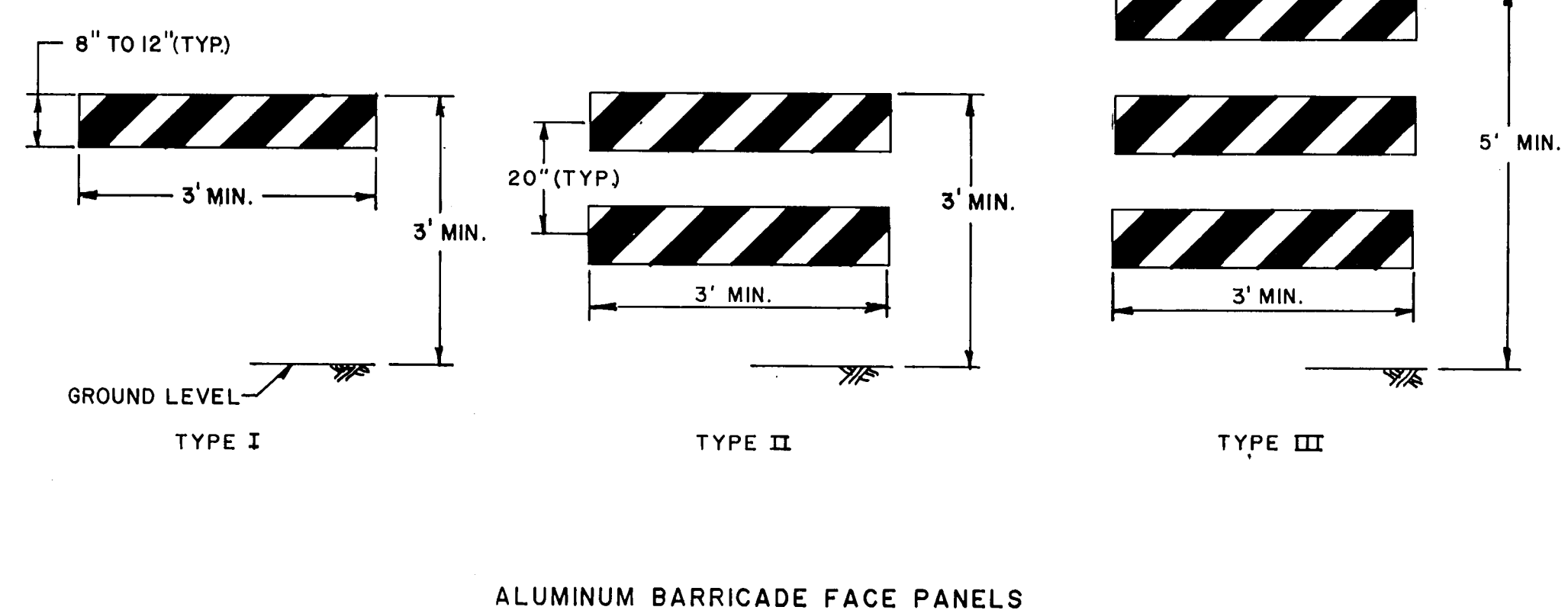


- NOTES:**
- TRAFFIC CONES SHALL BE DESIGNED IN ACCORDANCE WITH THE "MANUAL ON UNIFORM TRAFFIC CONTROL DEVICES, CHAPTER VI, SECTION 6C - 3 CONE DESIGN."
 - CONES SHALL BE A MINIMUM OF 18" IN HEIGHT OR AS SPECIFIED. COLOR SHALL BE PREDOMINATELY FEDERAL ORANGE.
 - PLASTIC CONES ARE TO BE COLOR IMPREGNATED.
 - RUBBER CONES ARE TO BE REFLECTORIZED WITH INTERIOR RIBS FOR RIGIDITY.
 - CONE WALL THICKNESS MUST WITHSTAND IMPACT, WITHOUT DAMAGE TO EITHER CONE OR VEHICLE UPON IMPACT.
 - THE ENGINEER RESERVES THE RIGHT TO REJECT ANY CONE HE DEEMS NOT SUITABLE FOR PURPOSE INTENDED.

- NOTES:**
- DIMENSIONS ARE APPROXIMATE.
 - BOTTOM SECTION MAY BE FILLED WITH SAND FOR BALLAST.
 - SUPPORT SHALL BE LOOSELY THREADED WITH ROPE, KNOTTED AS REQUIRED.



- NOTES:**
- ALUMINUM BARRICADE FACE PANELS SHALL BE MOUNTED ON 3" OR 4" P.V.C. BARRICADE SUPPORT.
 - MARKINGS FOR BARRICADE FACE PANELS SHALL BE ALTERNATE ORANGE AND WHITE STRIPES SLOPING DOWNWARD IN THE DIRECTION TRAFFIC IS TO PASS. 6" WIDE STRIPES AT A 45° ANGLE SHALL BE USED.
 - THE ENTIRE AREA OF ORANGE AND WHITE STRIPES SHALL BE REFLECTIVE SHEETING - ENCAPSULATED LENS. BARRICADE FACE PANELS AS NOTED SHALL BE REFLECTORIZED ON BOTH SIDES. WHERE TRAFFIC PASSES ONLY IN ONE DIRECTION OF TRAVEL, ONLY THE SIDE FACING TRAFFIC SHALL BE REFLECTORIZED.
 - ALUMINUM BARRICADE FACE PANELS SHALL HAVE ROUNDED CORNERS.
 - THE ENGINEER RESERVES THE RIGHT TO REJECT ANY BARRICADE FACE PANEL WHICH HE DEEMS HAZARDOUS, AND NOT IN THE BEST INTEREST OF THE MOTORING PUBLIC, OR NOT SUITABLE FOR PURPOSE INTENDED.

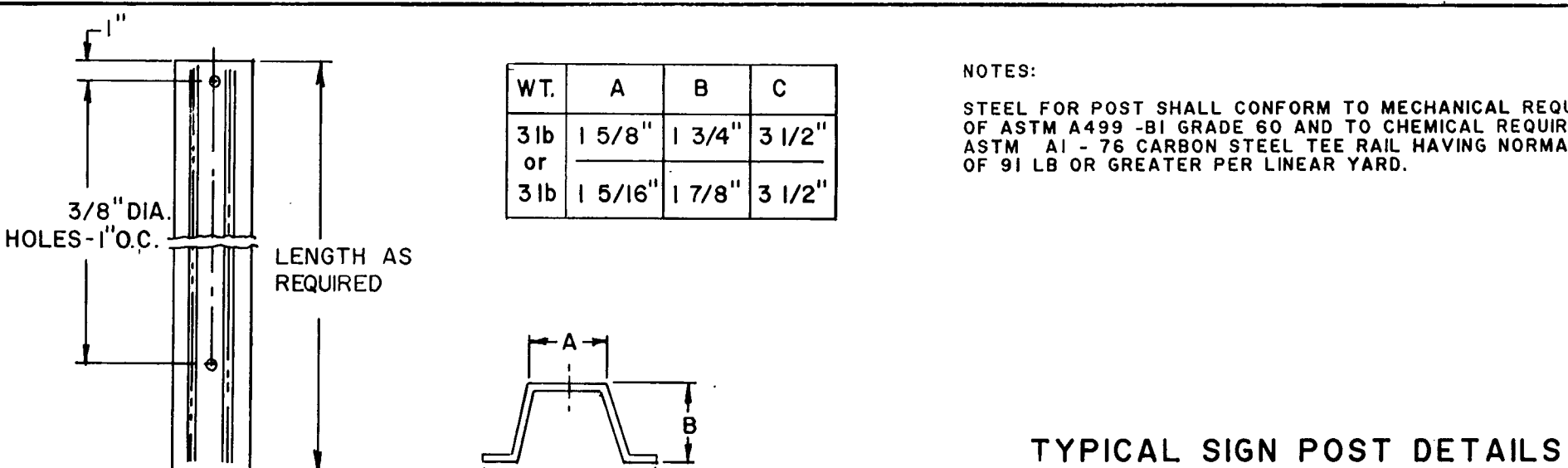


ROAD CLOSED AHEAD (CA)		
SIZE (INCHES)	SUPPORTS	
36" x 36"	1.	

LOCAL TRAFFIC ONLY (LT)		
SIZE (INCHES)	SUPPORTS	
30" x 36"	2	

STREET LEGALLY CLOSED (RC)		
SIZE (INCHES)	SUPPORTS	
30" x 18"	2	

DETOUR (L) (R)		
SIZE (INCHES)	SUPPORTS	
48" x 18"	2	
48" x 18"	2	

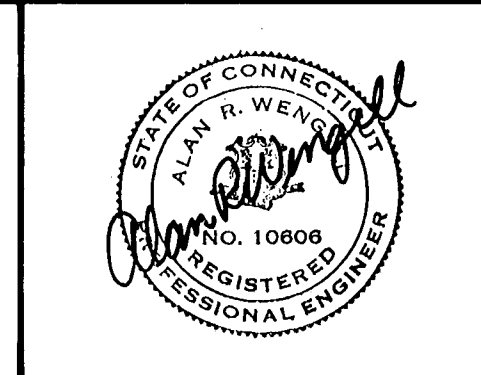


SUPV.	A.R.W.
DESIGN	M.D.H.
DRAWN	J.R.M.
CHECKED	J.A.C.
DATE	9-20-85

NO.	DATE	DESCRIPTION

GRAPHIC SCALES
N.T.S.

ROADWAY RECONSTRUCTION
HARTFORD, CONNECTICUT



Hayden | Wegman
Consulting Engineers
• WEST HARTFORD •
BOSTON • NEW YORK • ATLANTA
NIAGARA • WEST PALM BEACH

CITY OF HARTFORD, CONNECTICUT
DEPARTMENT OF PUBLIC WORKS
BUREAU OF ENGINEERING SERVICES
DAYBOOK NO. 011005
DATE

TRAFFIC PHASING
DETAILS FOR CONSTRUCTION SIGNING
AND CHANNELIZATION
Contract No. E86-2
Job No. 852534
SHEET I-8
OF