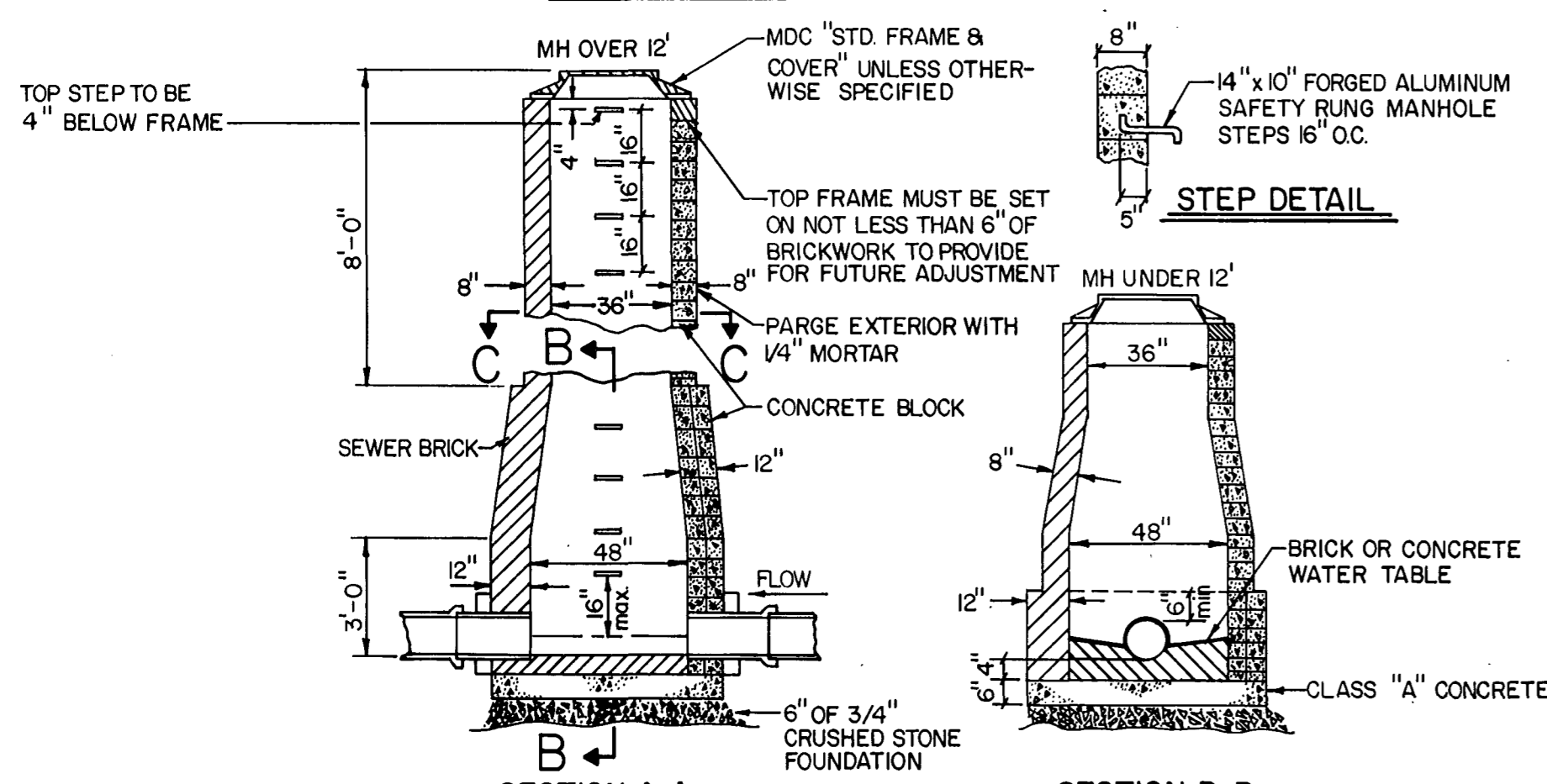


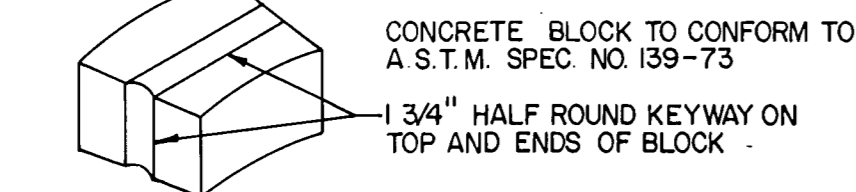
CONNECTION OF PIPES TO MANHOLE WALL TO BE MADE WITH BRICK OR CONCRETE MASONRY, OR AN ELASTOMERIC TYPE OF SEAL APPROVED BY THE ENGINEER.

SECTION C-C



SECTION A-A

SECTION B-B

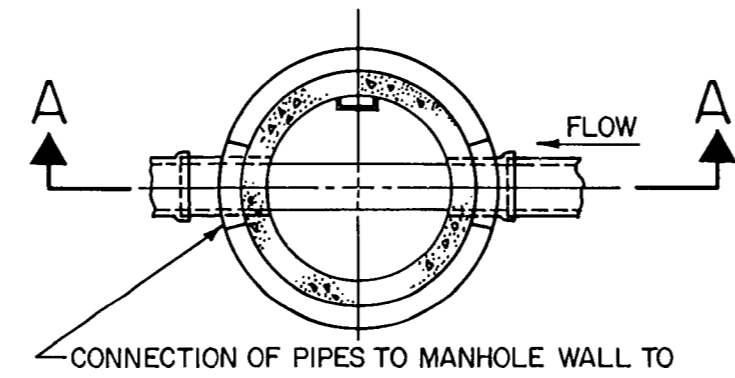


CONCRETE BLOCK DETAIL

14

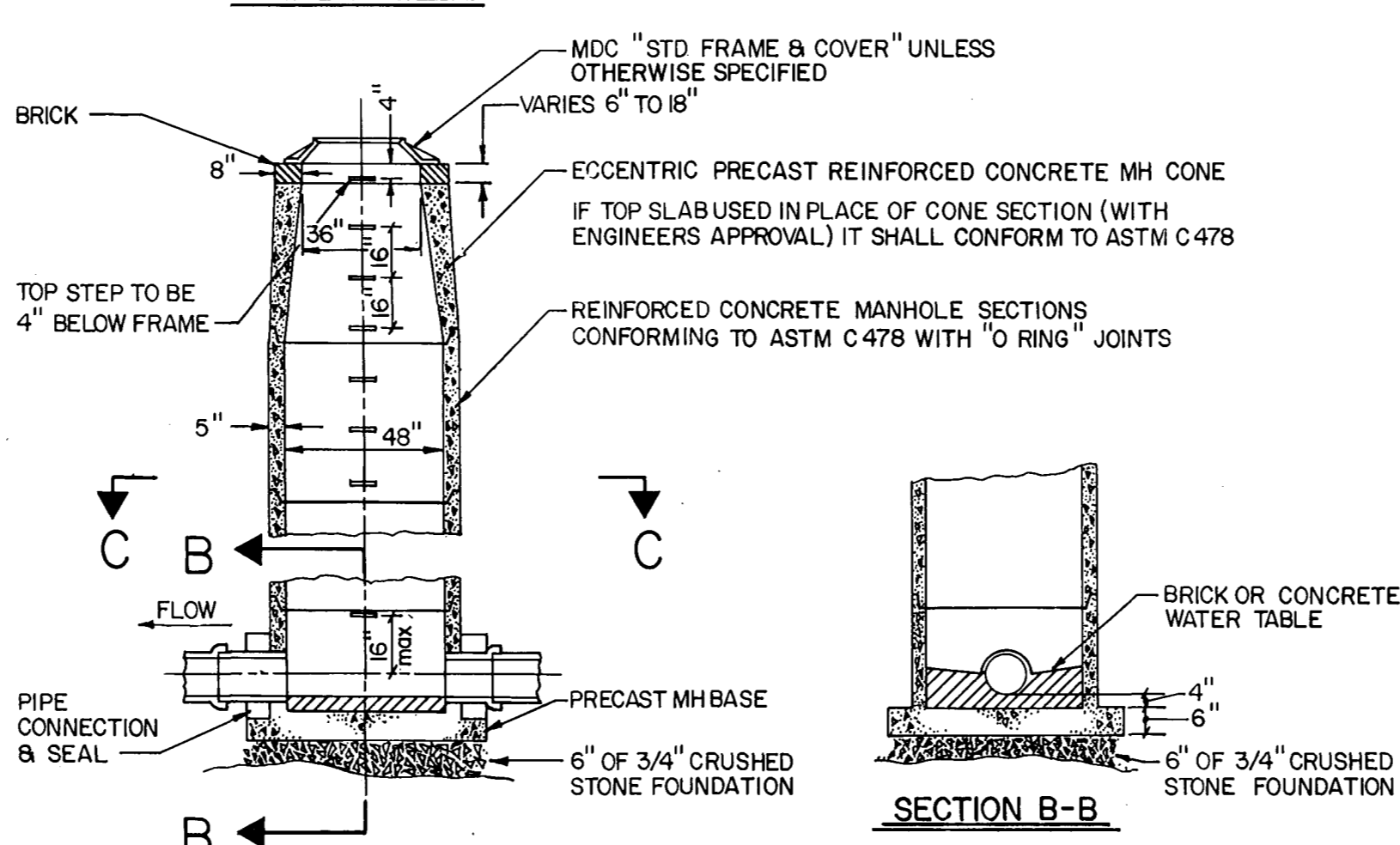
TYPE 1 MANHOLE

nts



CONNECTION OF PIPES TO MANHOLE WALL TO BE MADE WITH BRICK OR CONCRETE MASONRY, OR AN ELASTOMERIC TYPE OF SEAL APPROVED BY THE ENGINEER.

SECTION C-C



SECTION A-A

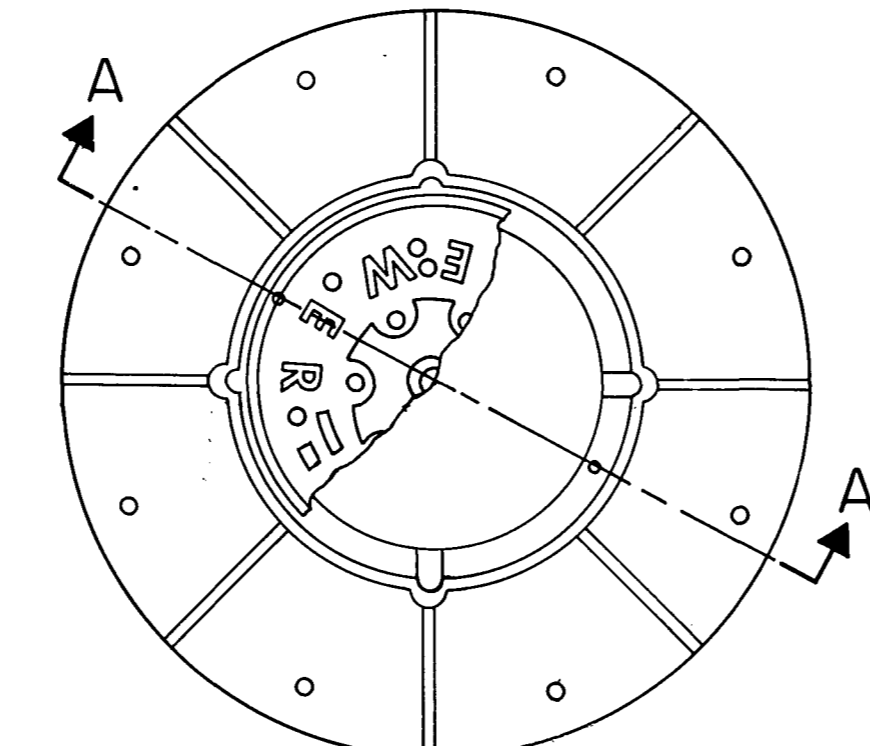
SECTION B-B

- MAXIMUM SIZE OF PIPE TO BE INSTALLED IN A TYPE 2 MANHOLE TO BE 18"
- MAXIMUM DEPTH OF R.C. PIPE MANHOLES WITH 5" THICK WALL IS 30 FT.
- RUBBER GASKETS USED FOR "O-RING" JOINTS SHALL CONFORM TO ASTM SPEC. C443
- ALL PRECAST MANHOLE BASES SHALL COMPLY WITH THE "MINIMUM REQUIREMENTS FOR 48" DIAMETER PRECAST MANHOLE BASE"

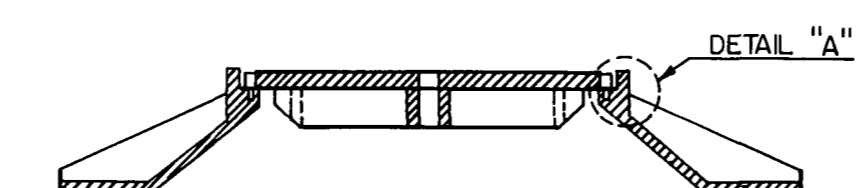
15

TYPE 2 MANHOLE

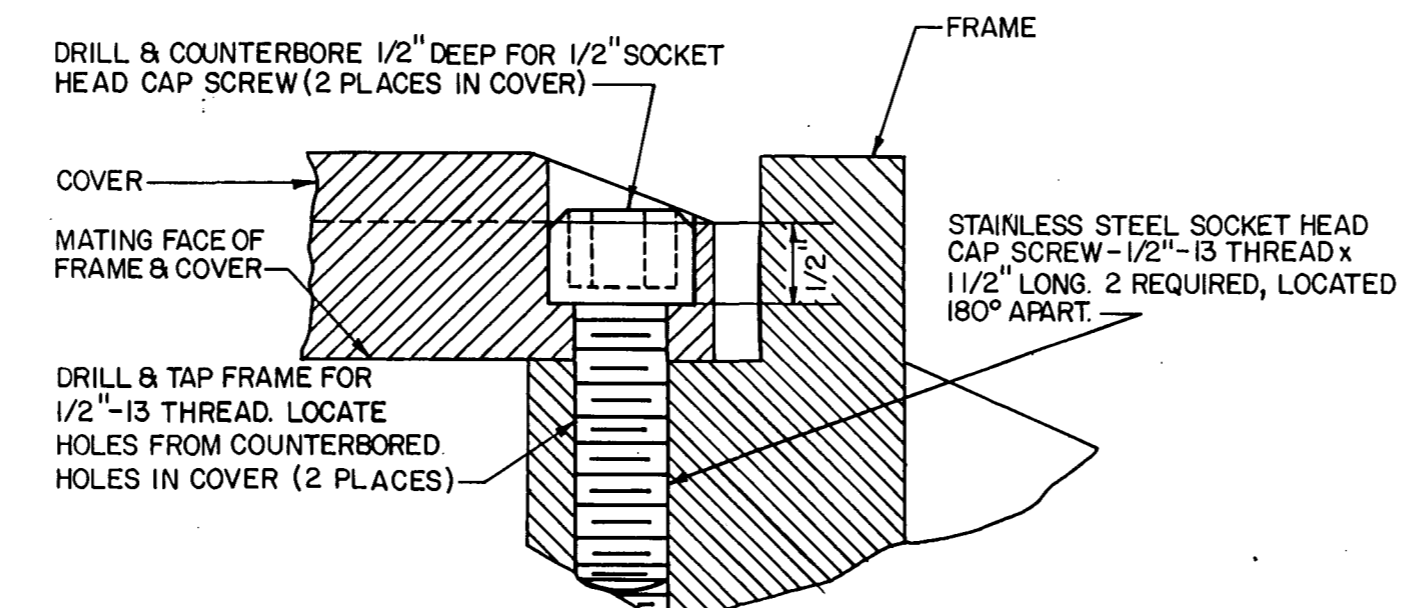
nts



DETAIL AS SHOWN IS FOR STANDARD FRAME & COVER, SERIAL NO. 12321, OR SPECIAL FRAME & COVER, SERIAL NO. 12738A, AS REQUIRED IN CONTRACT.



SECTION A-A

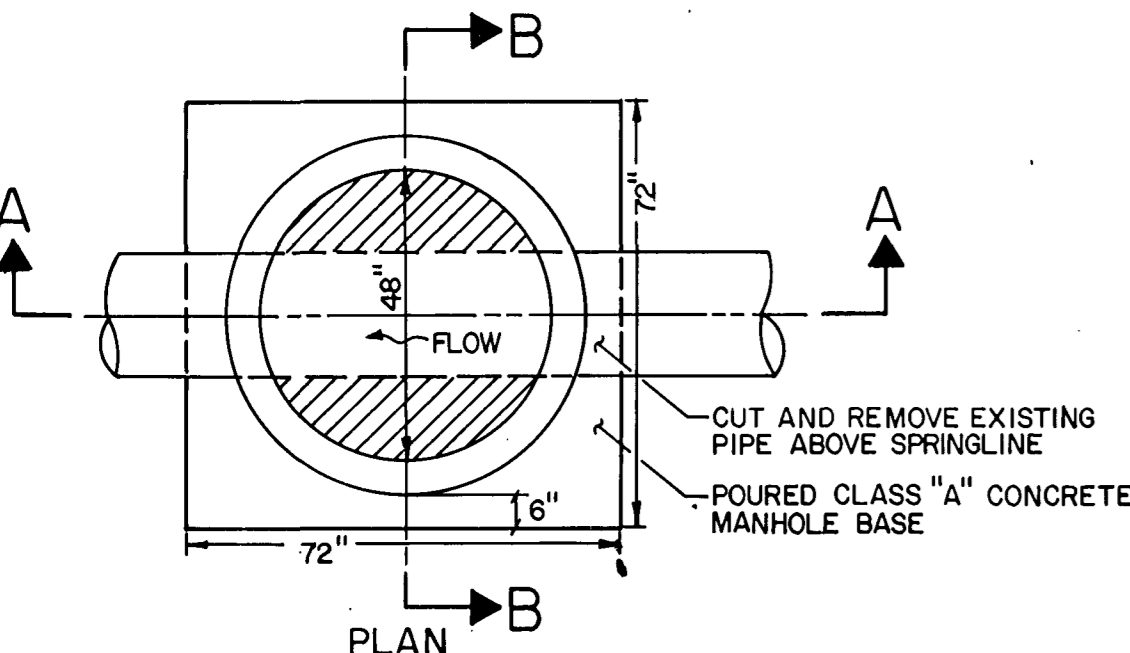


DETAIL "A"

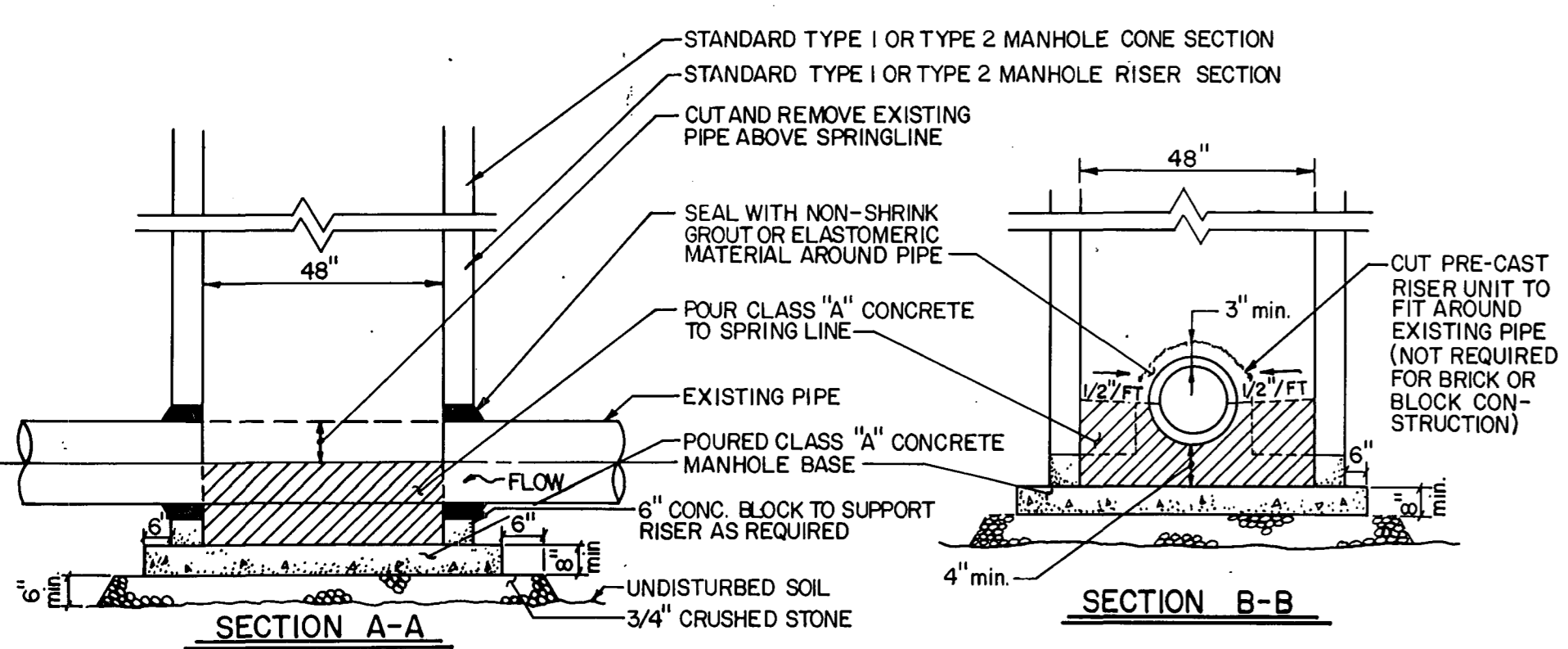
SECURITY BOLTING OF MANHOLE COVER

nts

17



PLAN



SECTION A-A

SECTION B-B

16

SPECIAL MANHOLE DETAIL

nts

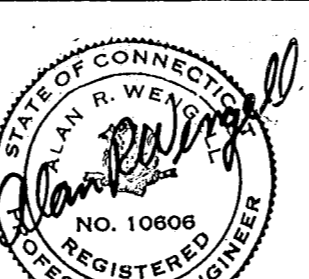
NOTE: CHECK GRAPHIC SCALES BEFORE USING DRAWINGS

NO.	DATE	DESCRIPTION
1	09-13-85	REVISIONS

SUPV.	J.A.C.
DESIGN	R.J.T.
DRAWN	K.H.T.
CHECKED	A.E.C.
DATE	09-13-85

GRAPHIC SCALES

ROADWAY RECONSTRUCTION
HARTFORD, CONNECTICUT



Hayden | Wegman

• WEST HARTFORD •
BOSTON • NEW YORK • ATLANTA
NIAGARA • WEST PALM BEACH

CITY OF HARTFORD, CONNECTICUT
DEPARTMENT OF PUBLIC WORKS
BUREAU OF ENGINEERING SERVICES

DAYBOOK NO. 011005

DATE

TYPICAL DETAILS

Contract No. E86-2

Job No. 852534

SHEET
OF
I-2