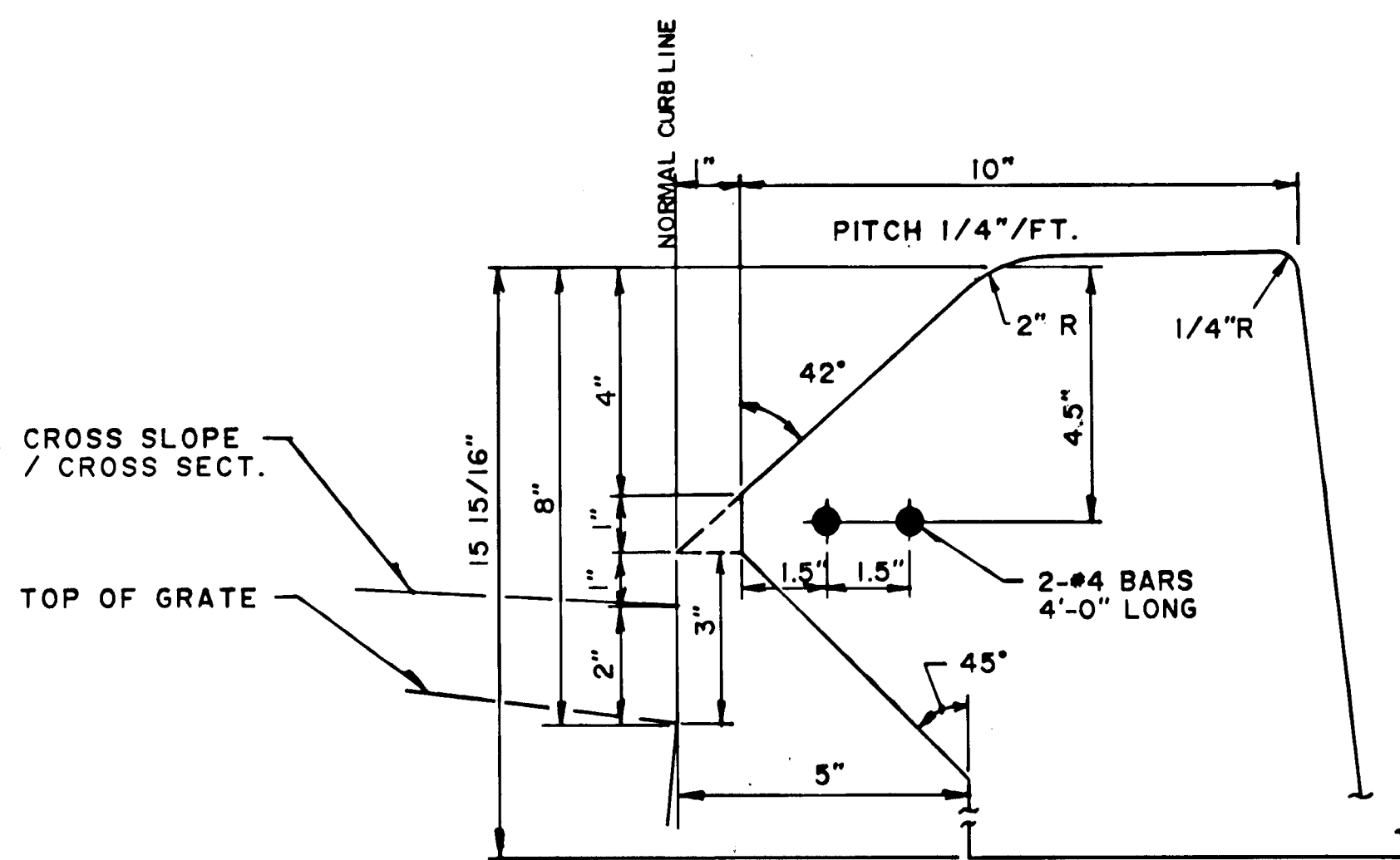
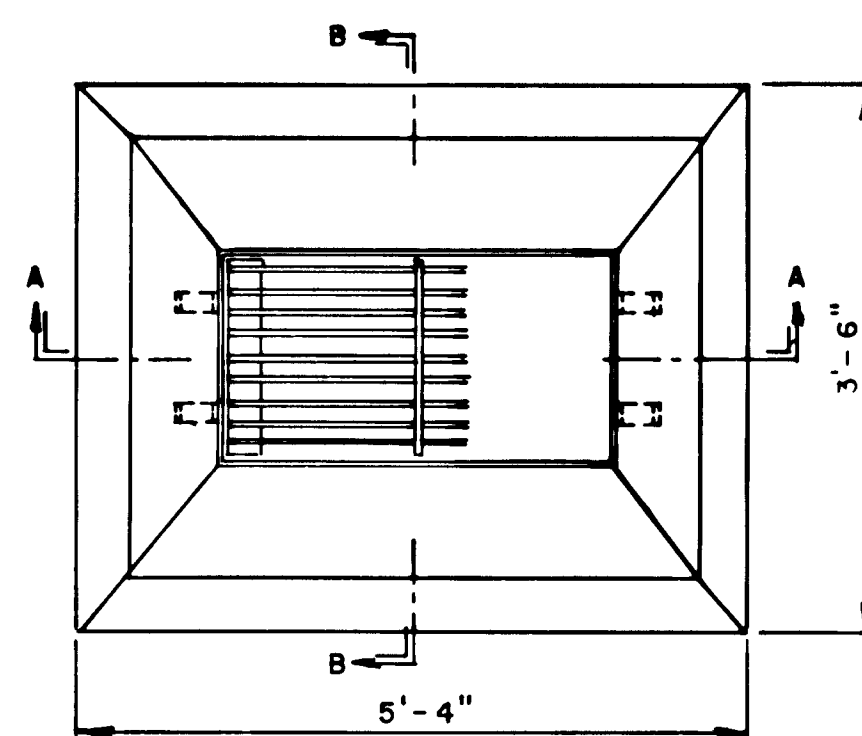


CITY MERESTONE

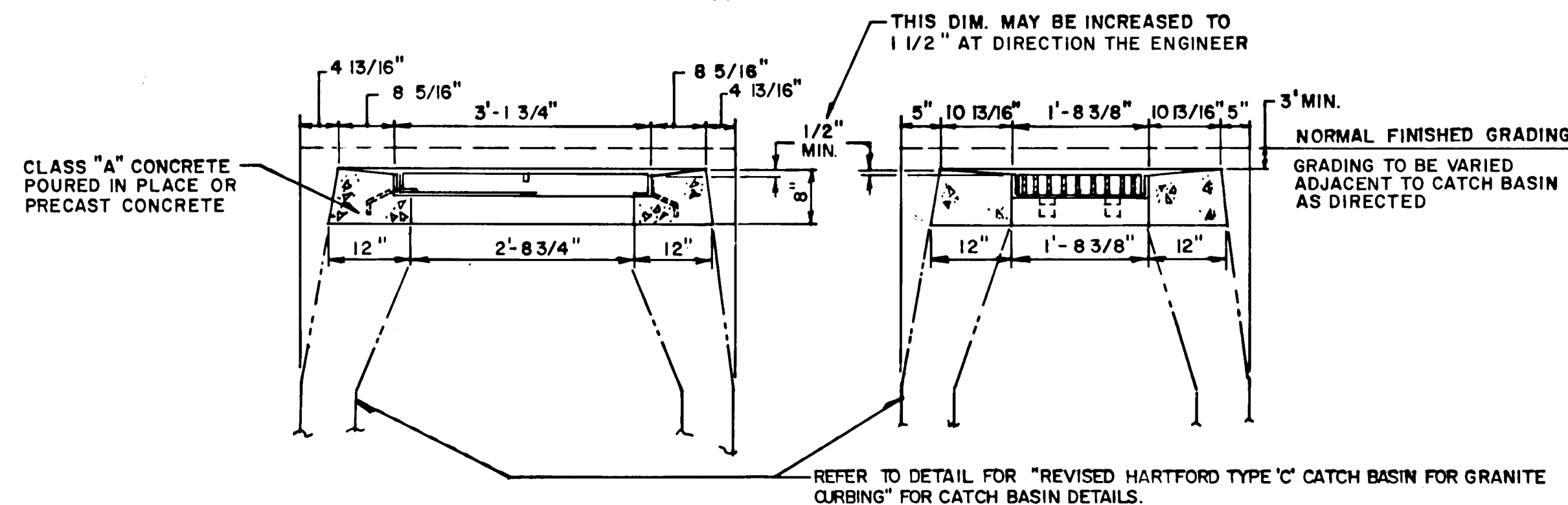


- NOTES
- 1 TO BE USED WHEN CURB INLET IS CONSTRUCTED IN A LINE OF B.C.L.C. 6" HIGH AND MONOLITHIC CONCRETE CURB AND GUTTER 6" HIGH
 - 2 SEE DETAIL FOR "HARTFORD TYPE 'C' CATCH BASIN FOR GRANITE CURBING" FOR TYPE 'C' BASIN DETAILS.

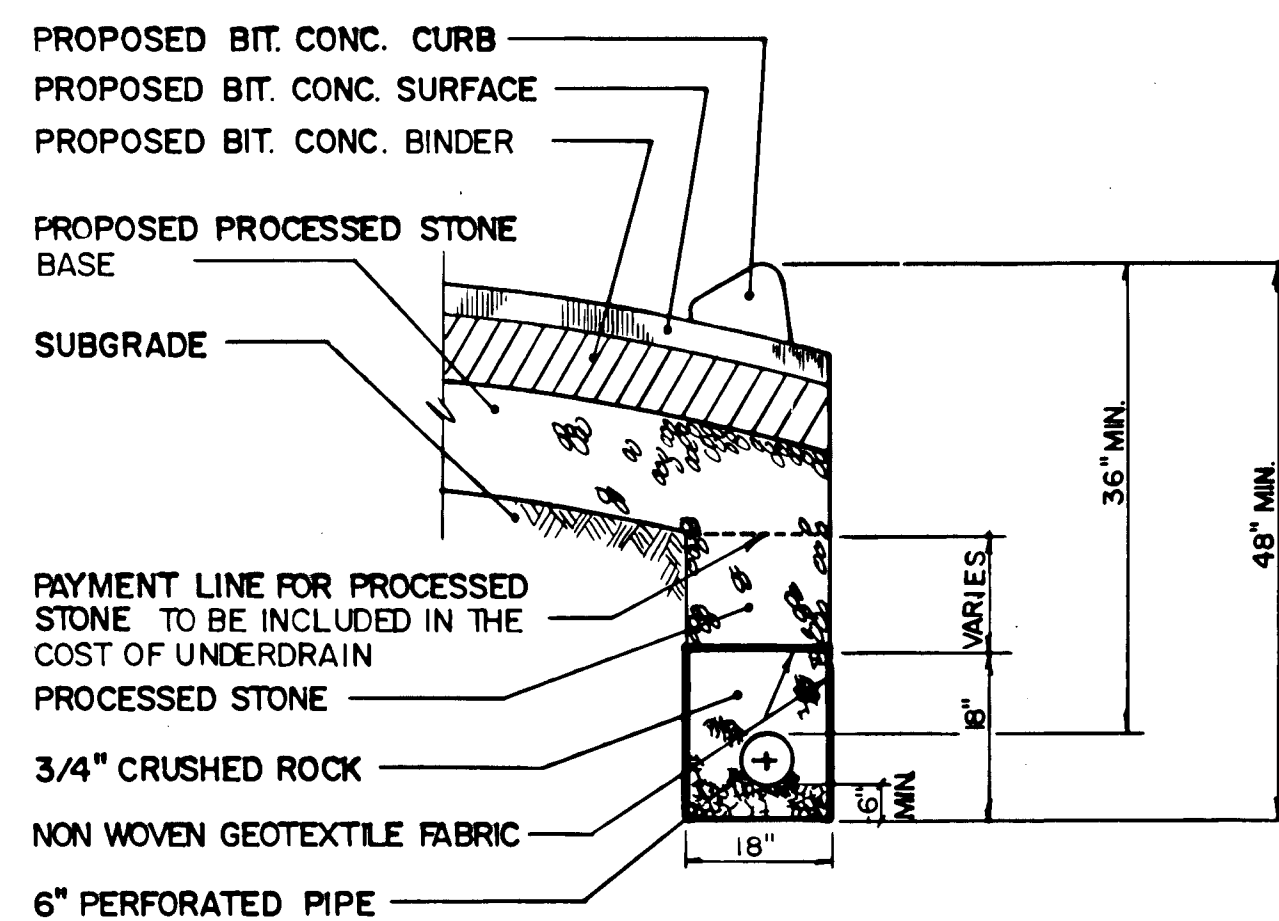
HARTFORD TYPE 'C' CATCH BASIN INLET FOR BITUMINOUS CONCRETE LIP CURBING AND CONCRETE CURBING



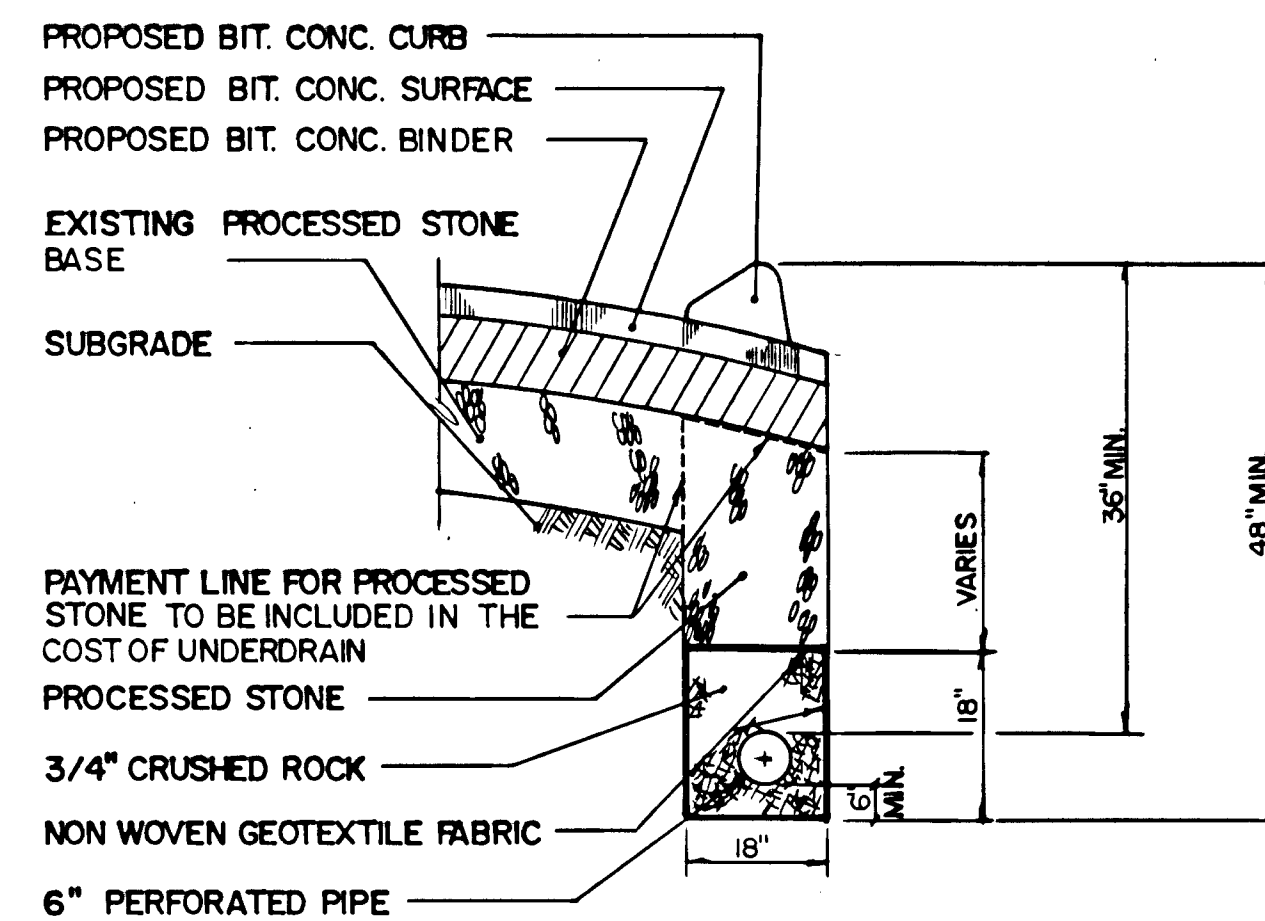
TYPE "C-L" CONCRETE TOP FOR C.B.



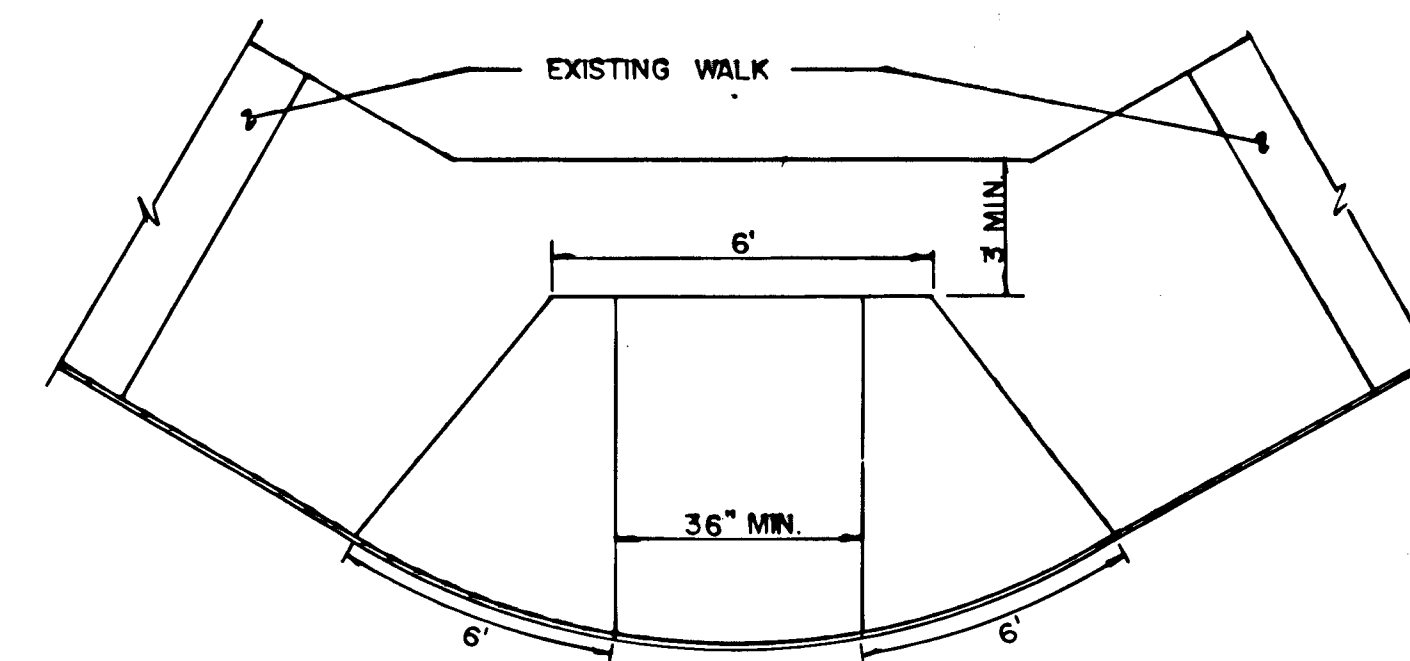
HARTFORD TYPE 'C-L' CATCH BASIN



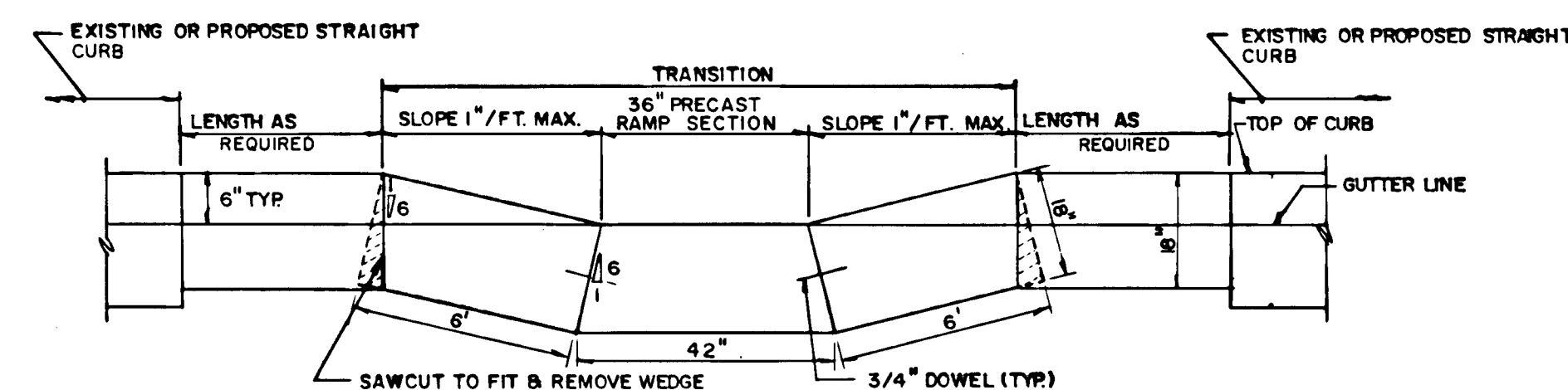
CURB UNDERDRAIN- TOTAL RECONSTRUCTION (DETAIL 1)



CURB UNDERDRAIN PAVEMENT REPAIR (DETAIL 2)



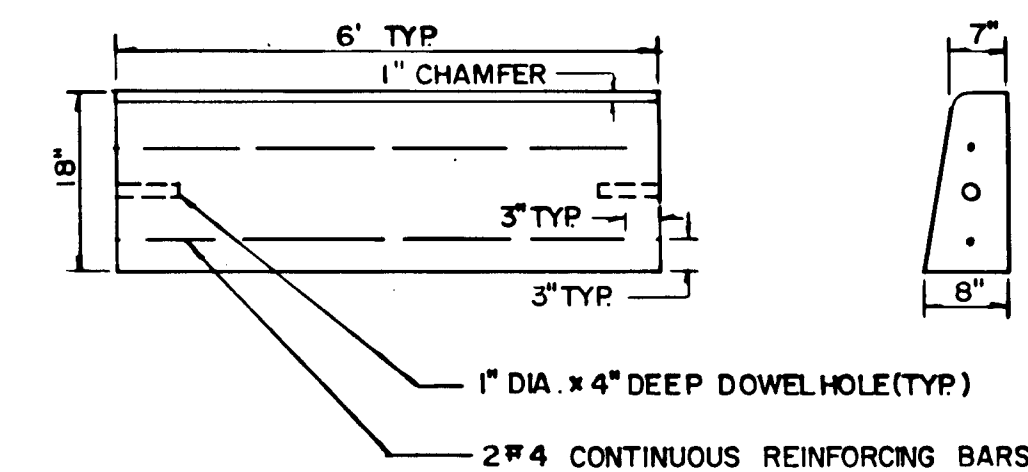
PLAN



SECTION

- NOTES:
- CURB AVAILABLE IN STANDARD 6' LENGTHS FOR RADII OF 15', 20', 25' ONLY.
 - FOR REQUIREMENTS ON STONE AND CONCRETE FOUNDATIONS SEE "STRAIGHT GRANITE CURB SECTION" & "RADIUS GRANITE CURB SECTION" DETAILS.
 - GROUT ALL JOINTS WITH NON-SHRINK TYPE GROUT MATCHING CURB COLOR EXCEPT WHERE BUTTING TO BIT. CONC. LIP CURBING.

LAYOUT DETAIL FOR PRECAST CONCRETE RADIUS CURB



TYPICAL PRECAST CONCRETE CURB DETAIL

NOTE: CHECK GRAPHIC SCALES BEFORE USING DRAWINGS

<div> <div> <div>NO.</div> <div>DATE</div> </div> <div> <div>DESCRIPTION</div> <div>REVISIONS</div> </div> </div>			<div> <div>SUPV.</div> <div>J.A.C.</div> </div>	<div> <div>GRAPHIC SCALES</div> <div>N.T.S.</div> </div>	<div> <div>ROADWAY RECONSTRUCTION</div> <div>HARTFORD, CONNECTICUT</div> </div>	<div> <div> <div> <div>STATE OF CONNECTICUT</div> <div>PLANNING & DESIGN DIVISION</div> </div> <div> <div>NO. 10008</div> <div>REGISTERED PROFESSIONAL ENGINEER</div> </div> </div> </div> <div> <div>Hayden Wegman</div> <div>Consulting Engineers</div> </div> <div> <div>• WEST HARTFORD •</div> <div>BOSTON • NEW YORK • ATLANTA</div> <div>NIAGARA • WEST PALM BEACH</div> </div>	<div> <div>CITY OF HARTFORD, CONNECTICUT</div> <div>DEPARTMENT OF PUBLIC WORKS</div> <div>BUREAU OF ENGINEERING SERVICES</div> </div>	<div>TYPICAL DETAILS</div>	
			<div> <div>DESIGN</div> <div>M.D.H.</div> </div>				<div> <div>DAYBOOK NO. 011013</div> <div>DATE</div> </div>		
			<div> <div>DRAWN</div> <div>J.R.M./T.C.</div> </div>				<div> <div>Contract No. E 86-10</div> <div>Job No. 852534</div> </div>		
			<div> <div>CHECKED</div> <div>A.E.C.</div> </div>				<div> <div>DATE</div> <div>9-20-85</div> </div>		