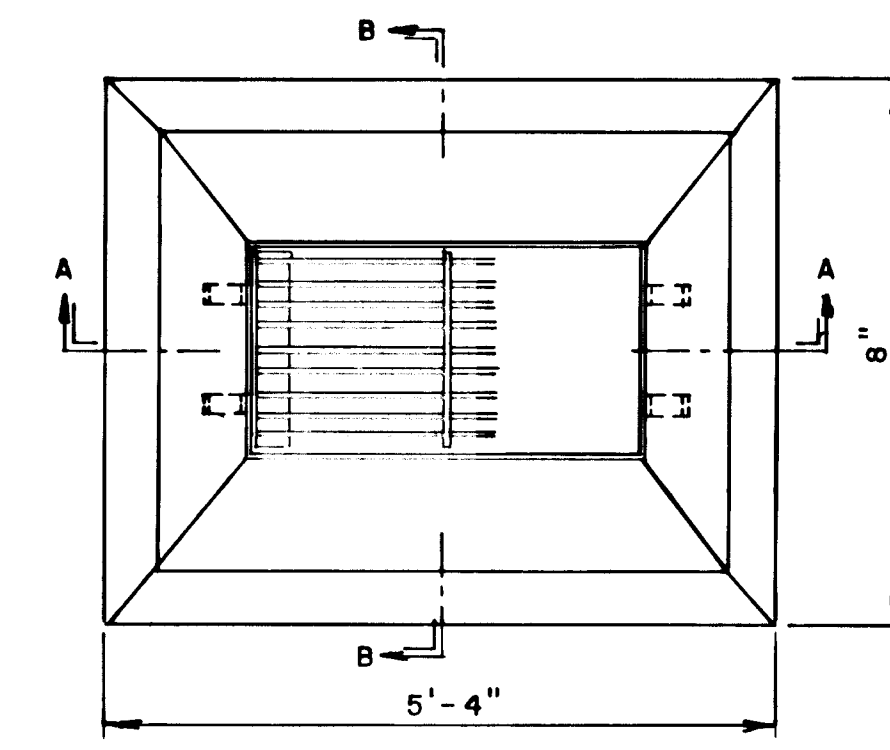
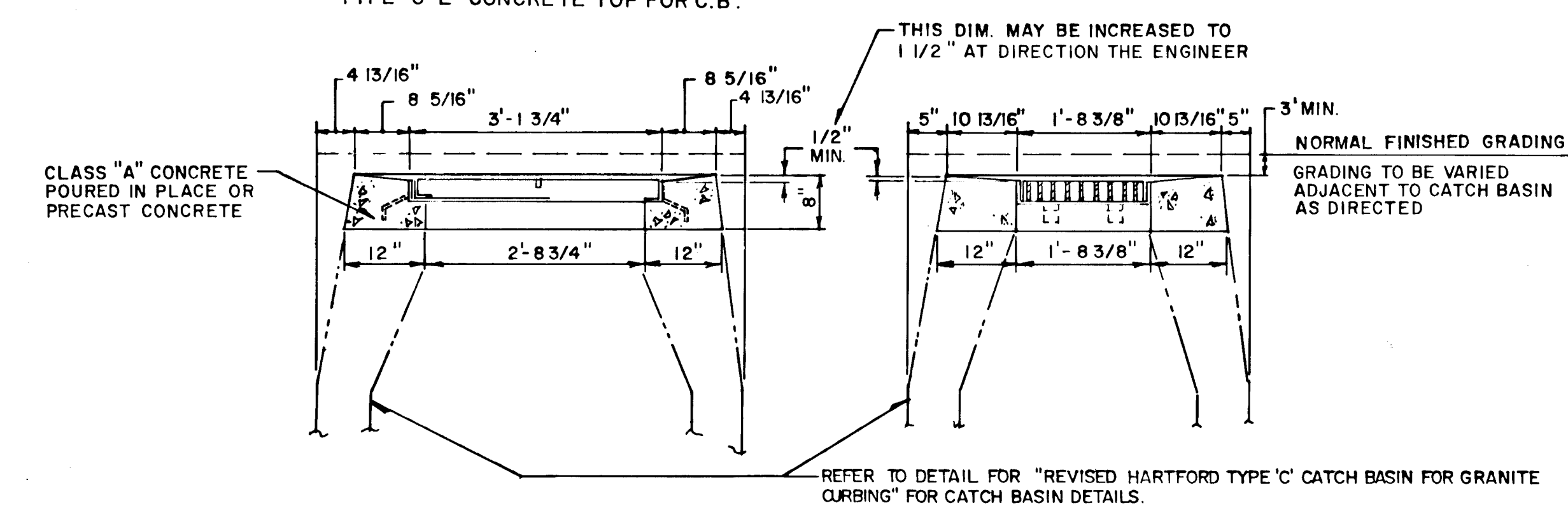


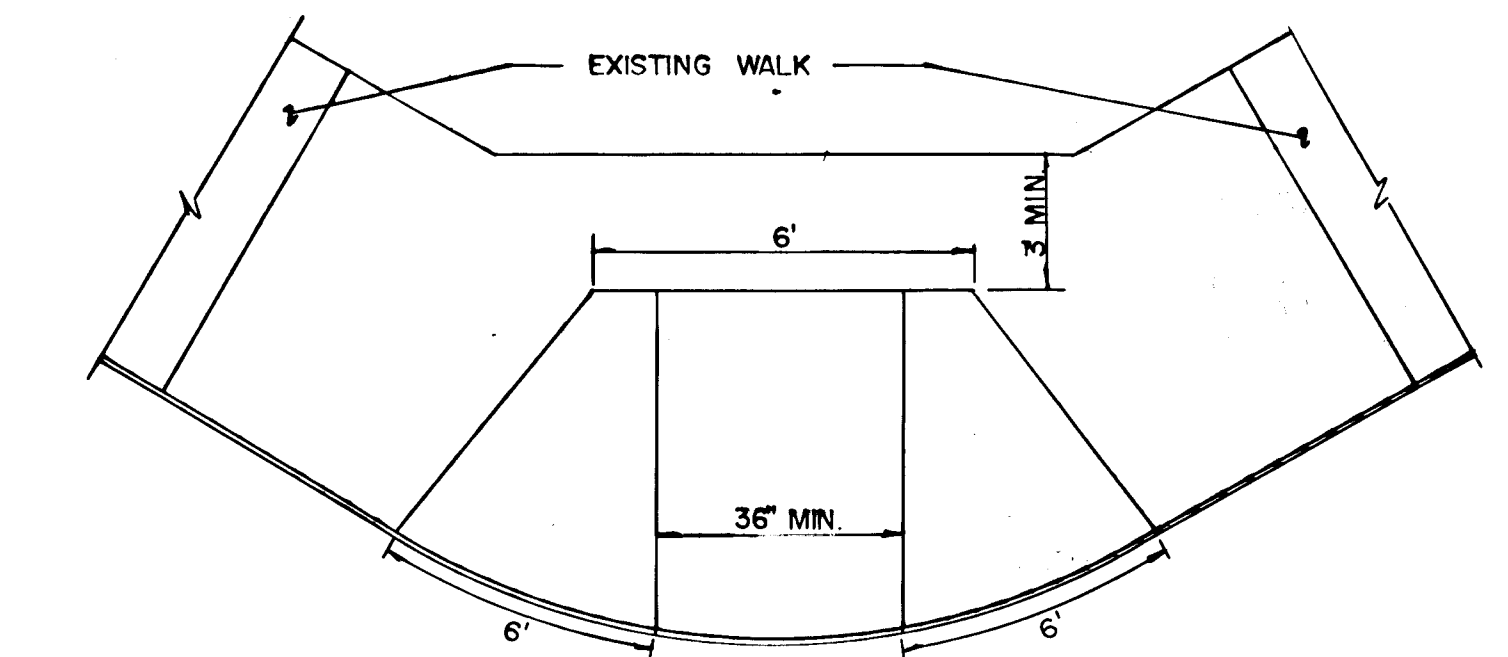
CITY MERESTONE



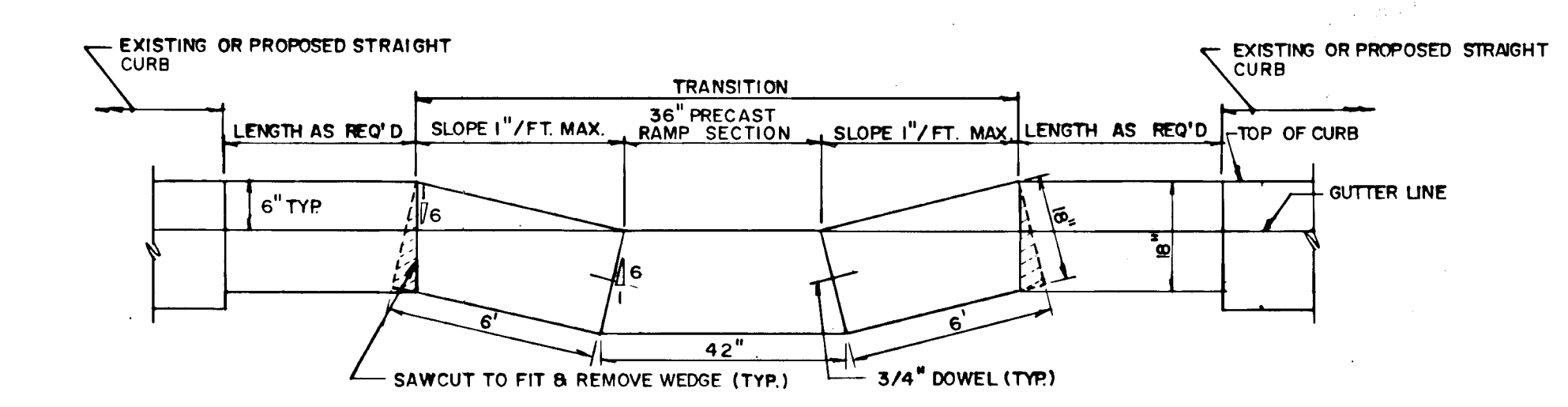
TYPE "C-L" CONCRETE TOP FOR C.B.



HARTFORD TYPE 'C-L' CATCH BASIN



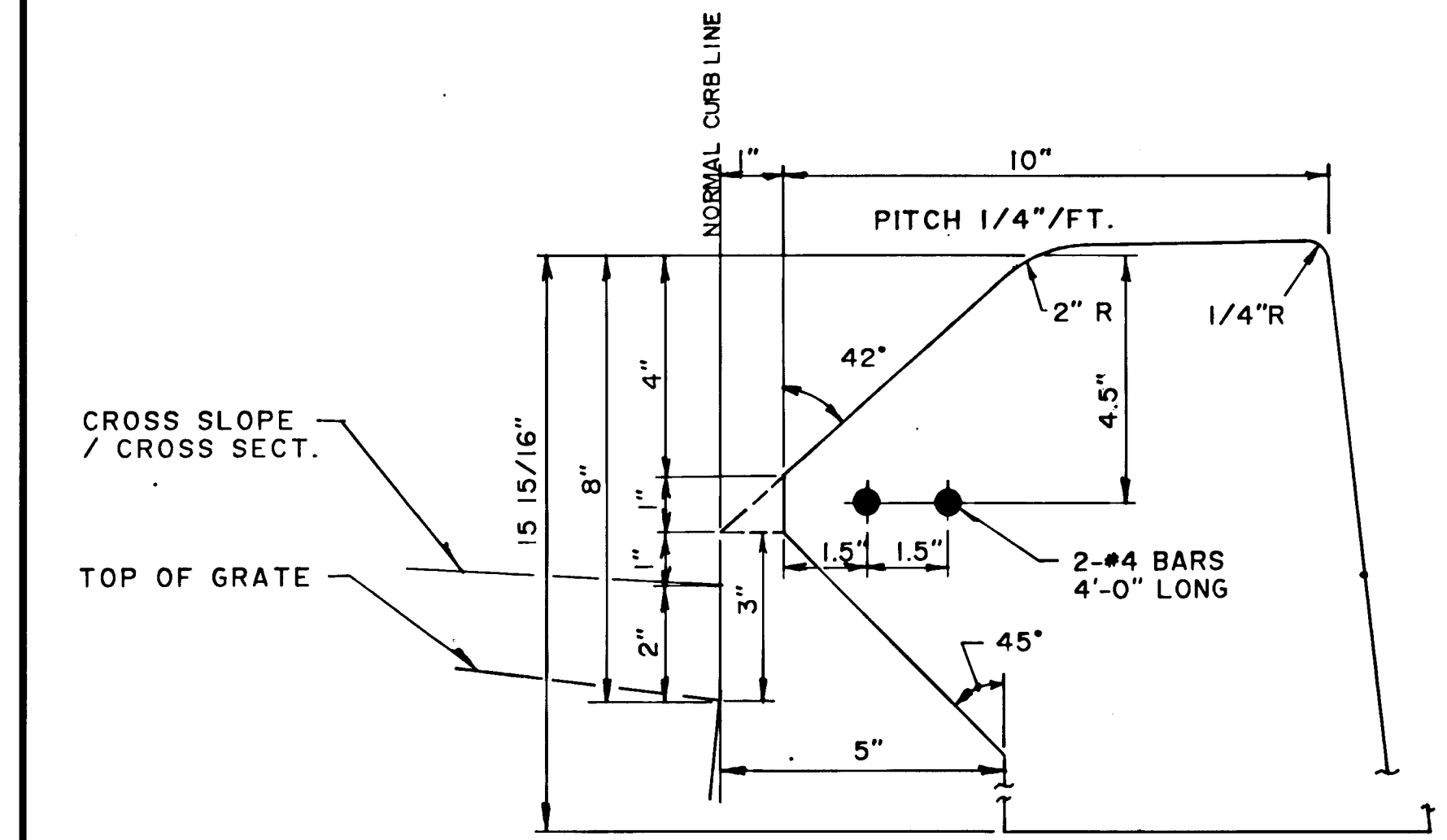
PLAN



SECTION

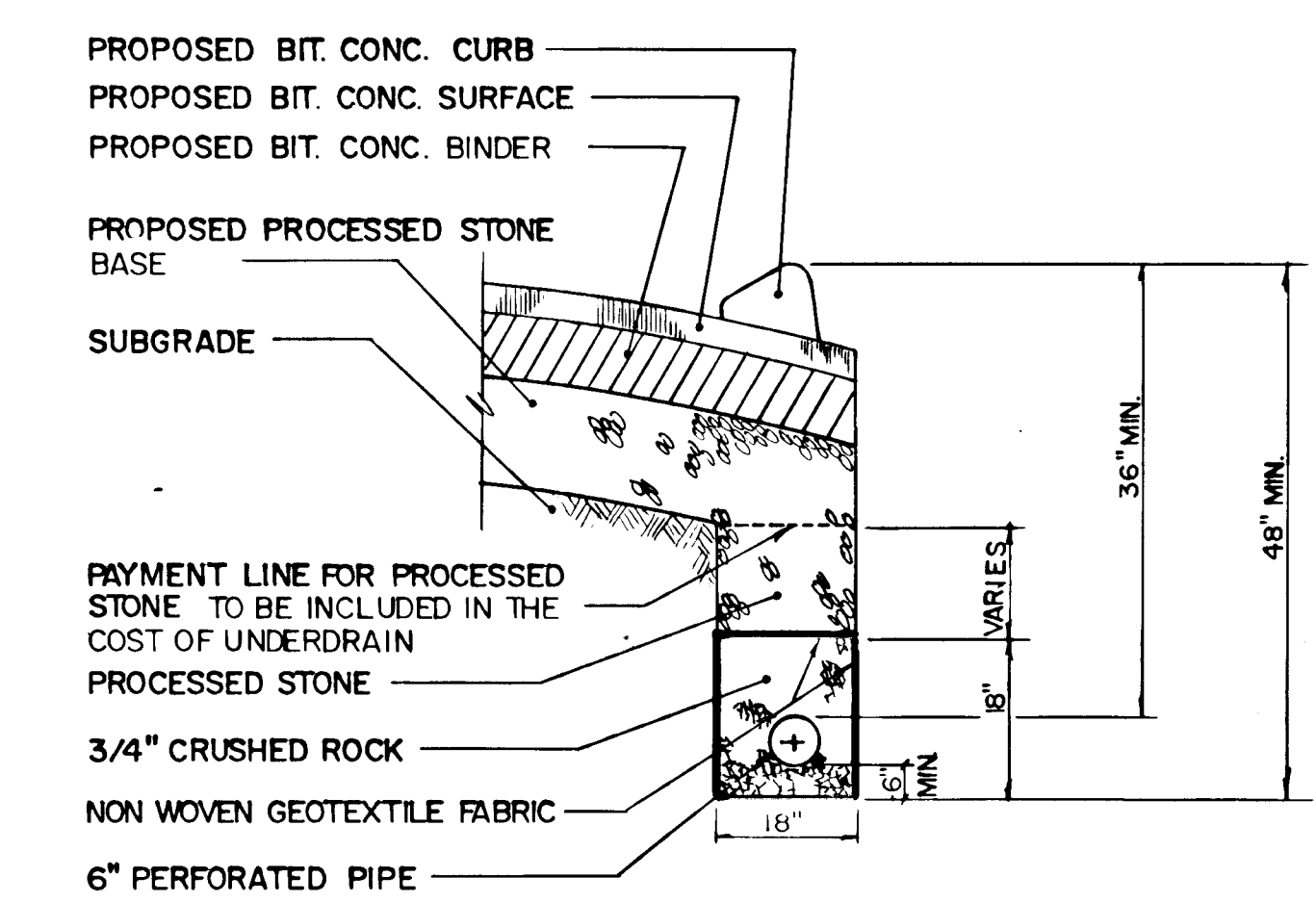
NOTES:
CURB AVAILABLE IN STANDARD 6' LENGTHS FOR RADIUS OF 15', 20', 25' ONLY.
FOR REQUIREMENTS ON STONE AND CONCRETE FOUNDATIONS SEE "STRAIGHT GRANITE CURB SECTION" & "RADIUS GRANITE CURB SECTION" DETAILS.
GROUT ALL JOINTS WITH NON-SHRINK TYPE GROUT MATCHING CURB COLOR EXCEPT WHERE BUTTING TO BIT. CONC. LIP CURBING.

LAYOUT DETAIL FOR PRECAST CONCRETE RADIUS CURB

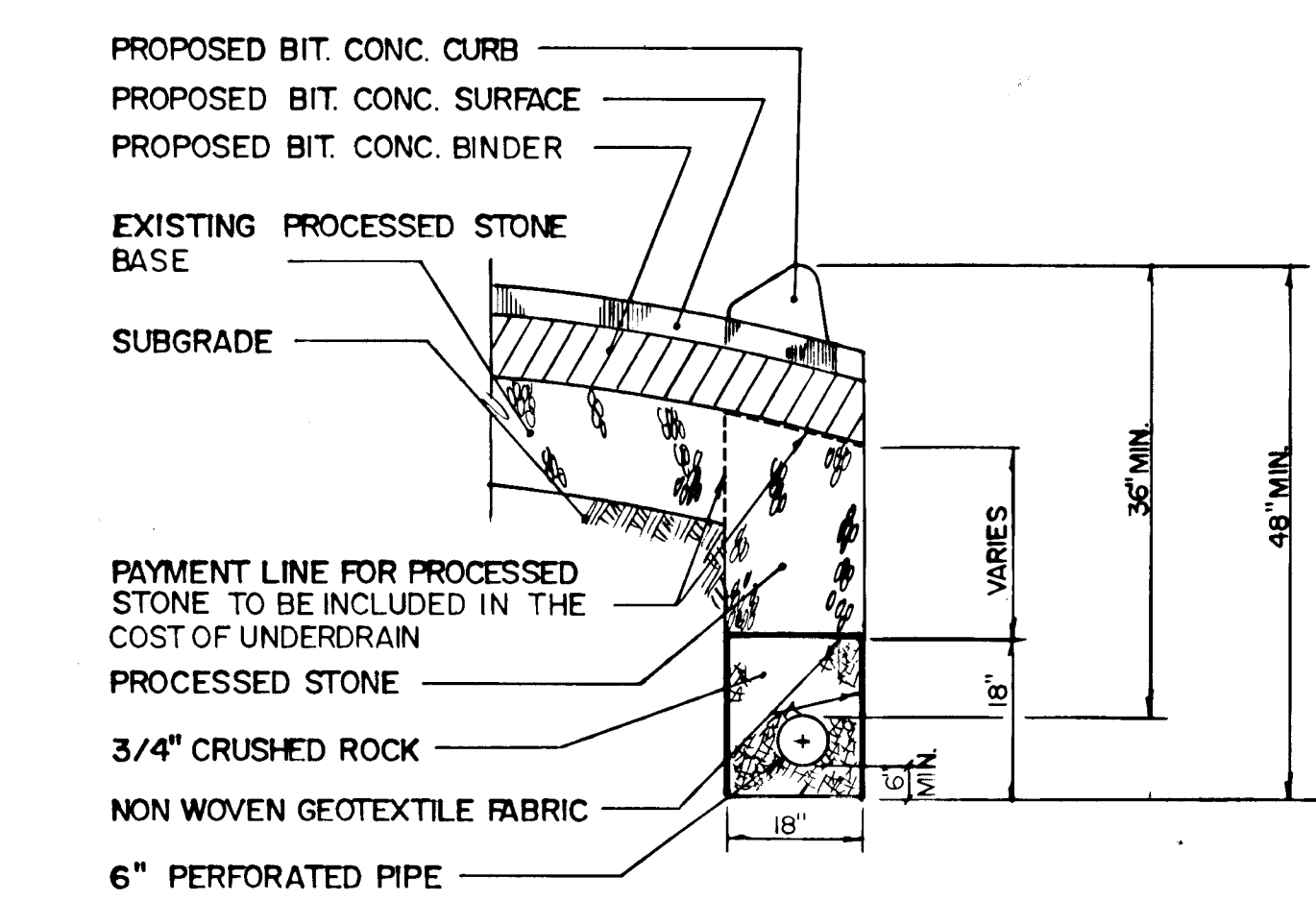


NOTES
1 TO BE USED WHEN CURB INLET IS CONSTRUCTED IN A LINE OF B.C.L.C. 6" HIGH AND MONOLITHIC CONCRETE CURB AND GUTTER 6" HIGH
2 SEE DETAIL FOR "HARTFORD TYPE 'C' CATCH BASIN FOR GRANITE CURBING" FOR TYPE 'C' BASIN DETAILS.

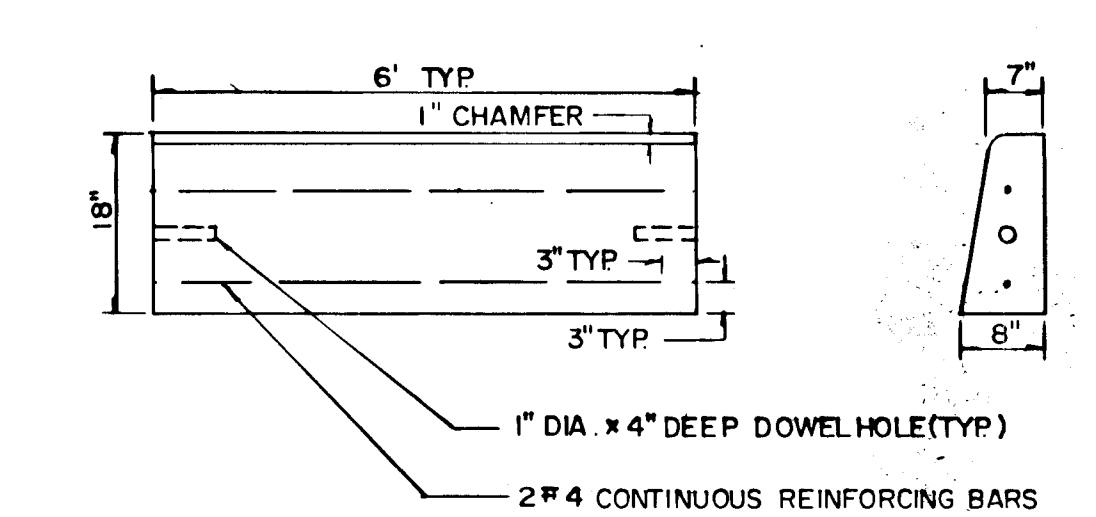
HARTFORD TYPE 'C' CATCH BASIN INLET FOR BITUMINOUS CONCRETE LIP CURBING AND CONCRETE CURBING



CURB UNDERDRAIN- TOTAL RECONSTRUCTION (DETAIL 1)




CURB UNDERDRAIN PAVEMENT REPAIR (DETAIL 2)



TYPICAL PRECAST CONCRETE CURB DETAIL

NOTE: CHECK GRAPHIC SCALES BEFORE USING DRAWINGS

		SUPV. JAC	GRAPHIC SCALES	NTS	ROADWAY RECONSTRUCTION HARTFORD, CONNECTICUT		Hayden Wegman Consulting Engineers	CITY OF HARTFORD, CONNECTICUT DEPARTMENT OF PUBLIC WORKS BUREAU OF ENGINEERING SERVICES	TYPICAL DETAILS					
		DESIGN N/A												
		DRAWN JRM / TC												
		CHECKED JAC												
		DATE 9-20-85												
NO.	DATE	DESCRIPTION								Contract No. E86-6		Job No. 852534		SHEET I-4
REVISIONS										DAYBOOK NO. 011009				OF
										DATE				