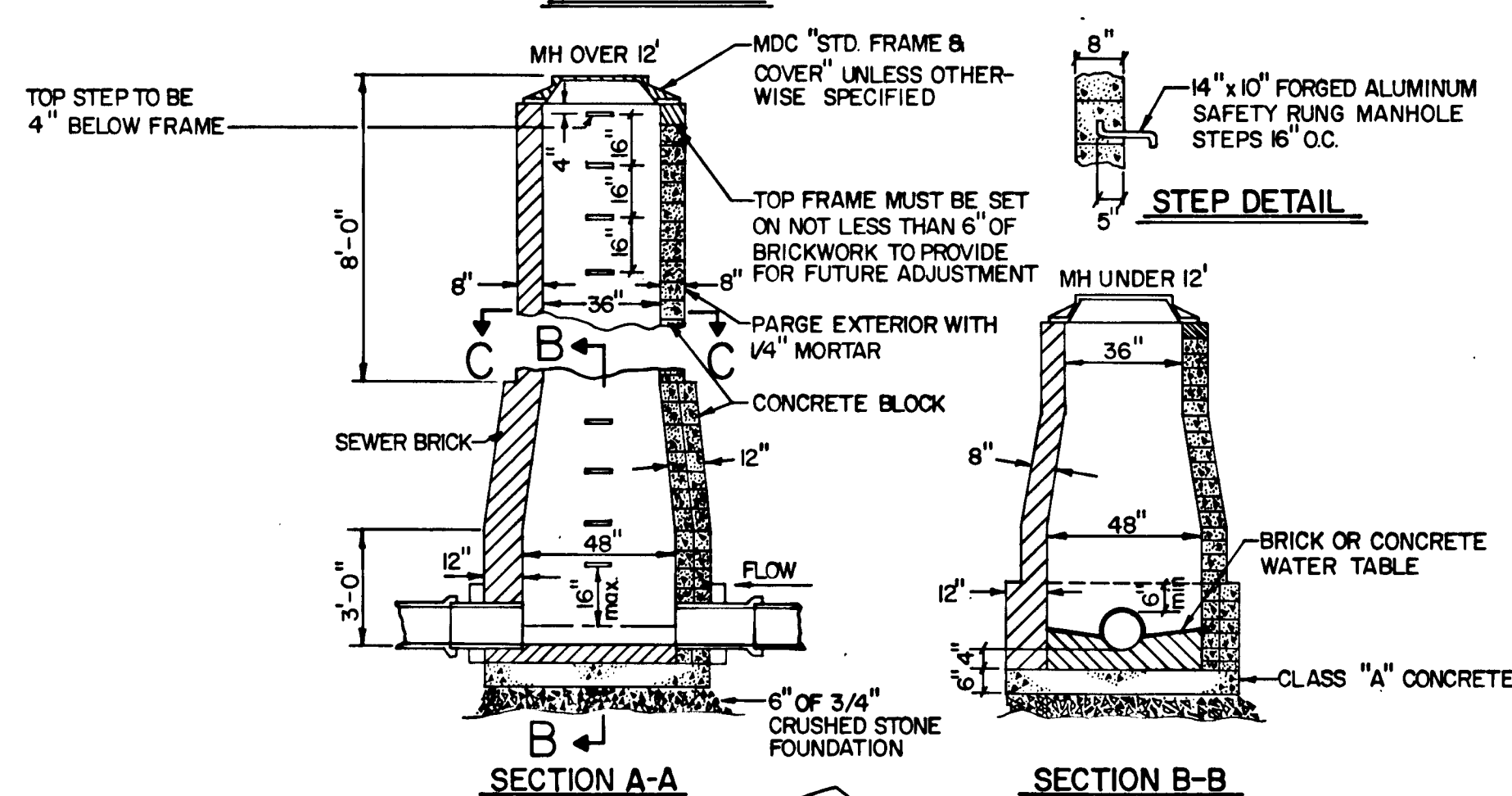


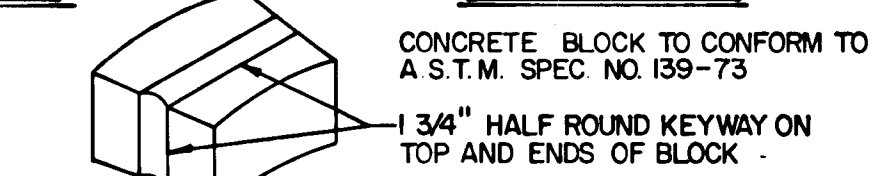
CONNECTION OF PIPES TO MANHOLE WALL TO BE MADE WITH BRICK OR CONCRETE MASONRY, OR AN ELASTOMERIC TYPE OF SEAL APPROVED BY THE ENGINEER.

SECTION C-C



SECTION A-A

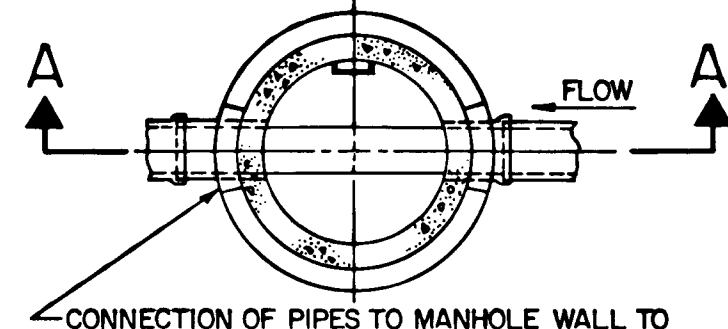
SECTION B-B



CONCRETE BLOCK DETAIL

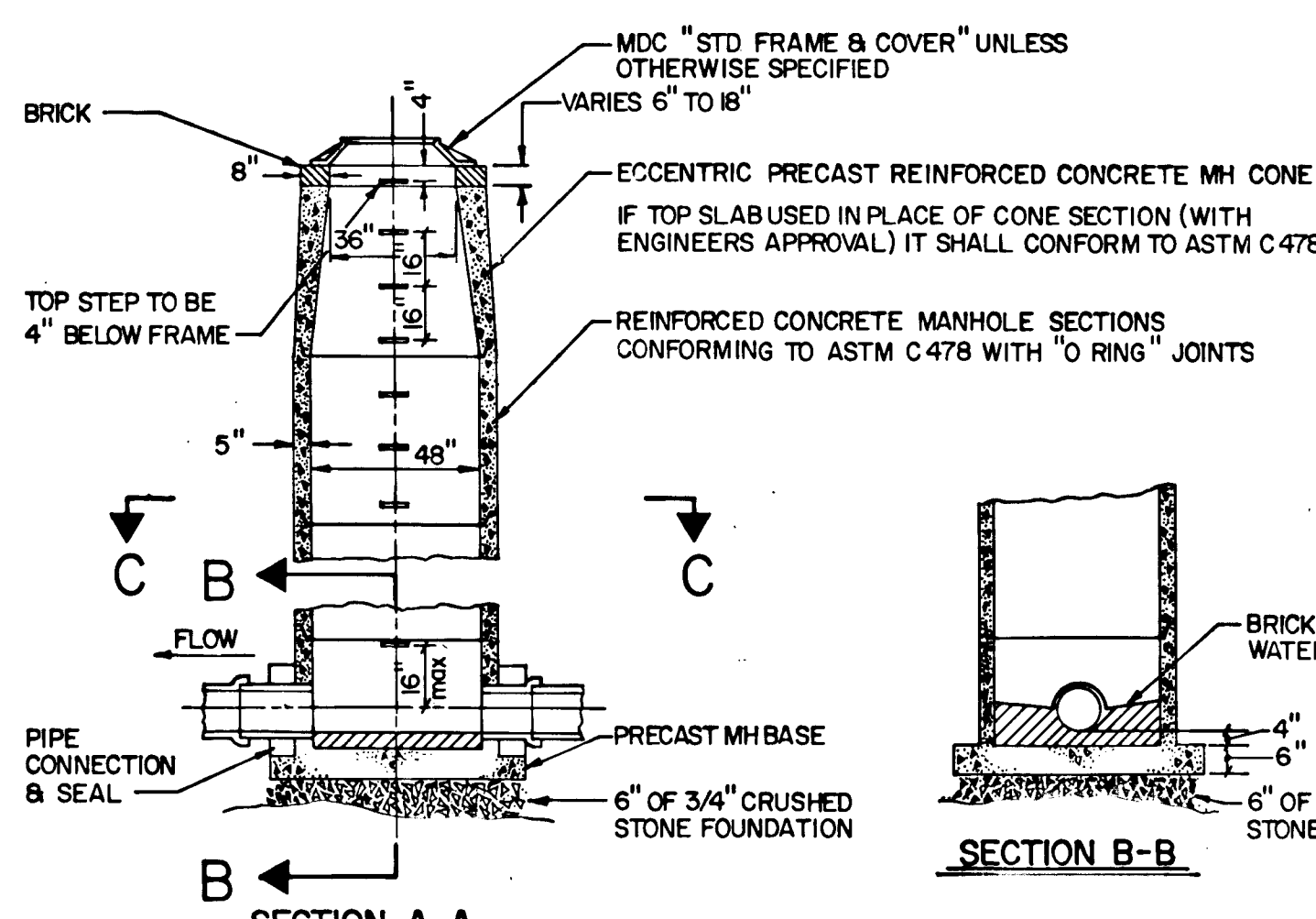
14

TYPE 1 MANHOLE
nts



CONNECTION OF PIPES TO MANHOLE WALL TO BE MADE WITH BRICK OR CONCRETE MASONRY, OR AN ELASTOMERIC TYPE OF SEAL APPROVED BY THE ENGINEER.

SECTION C-C

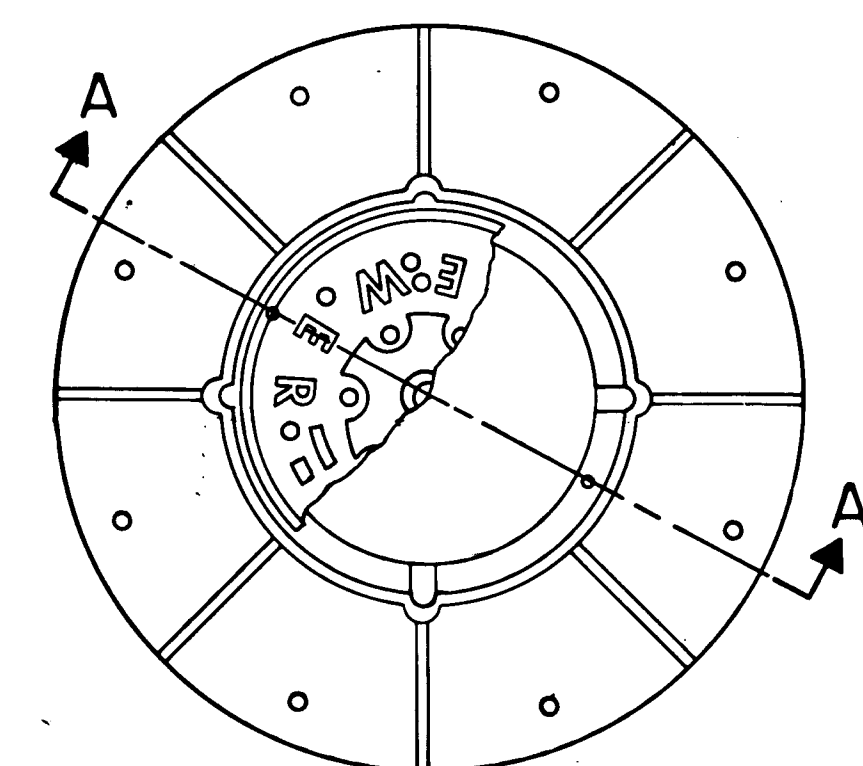


SECTION A-A

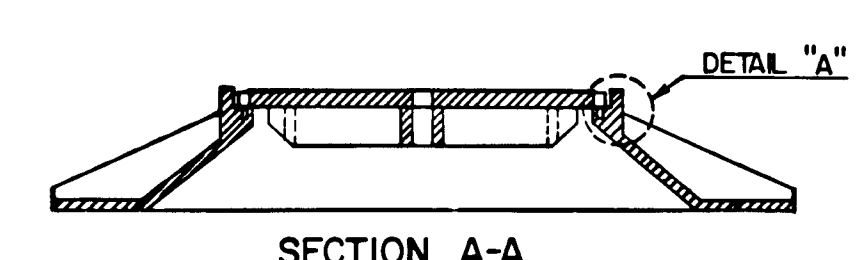
SECTION B-B

15

TYPE 2 MANHOLE
TYPICAL PRECAST MANHOLE
nts

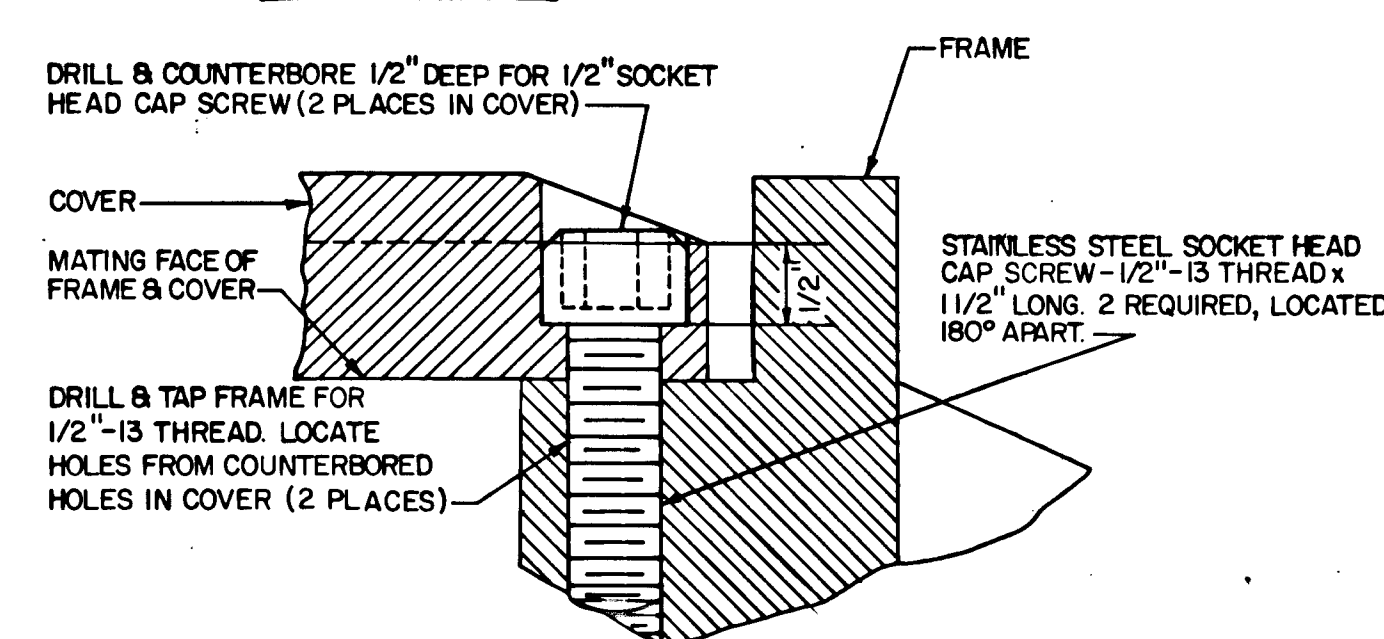


DETAIL AS SHOWN IS FOR STANDARD FRAME & COVER, SERIAL NO. 12321, OR SPECIAL FRAME & COVER, SERIAL NO. 12738A, AS REQUIRED IN CONTRACT.



SECTION A-A

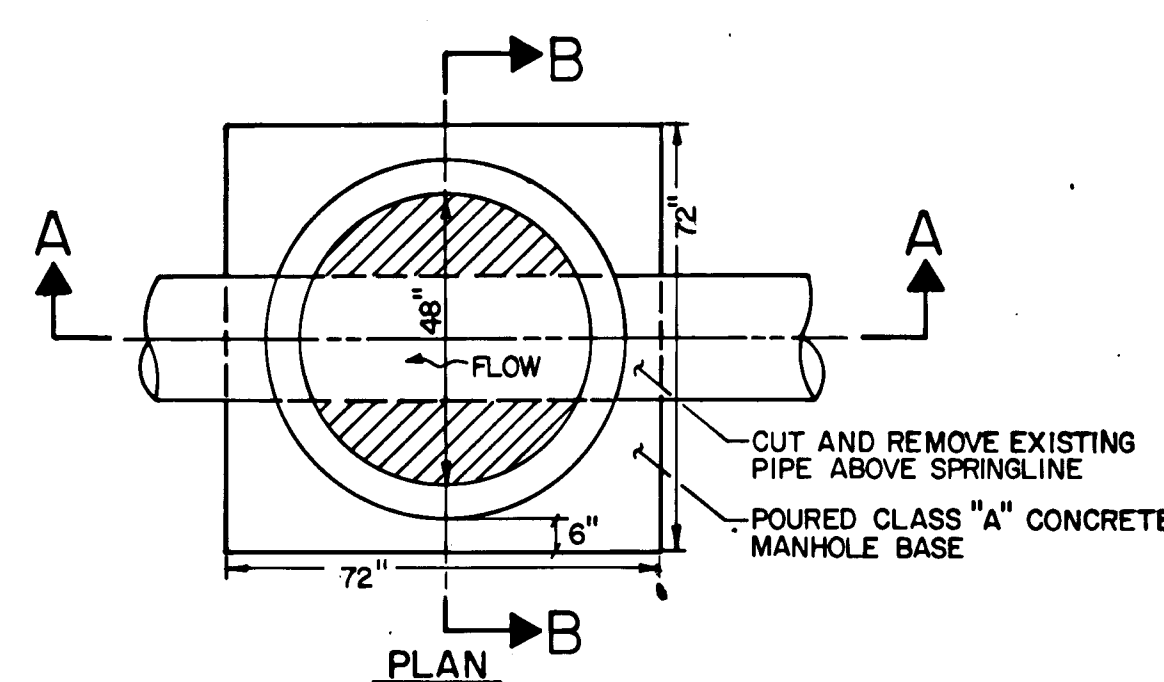
NOTE: EACH FRAME & COVER SET WILL BE MARKED FOR IDENTIFICATION TO INSURE THAT THE PROPER COVER IS INSTALLED WITH ITS DRILLED AND TAPPED FRAME



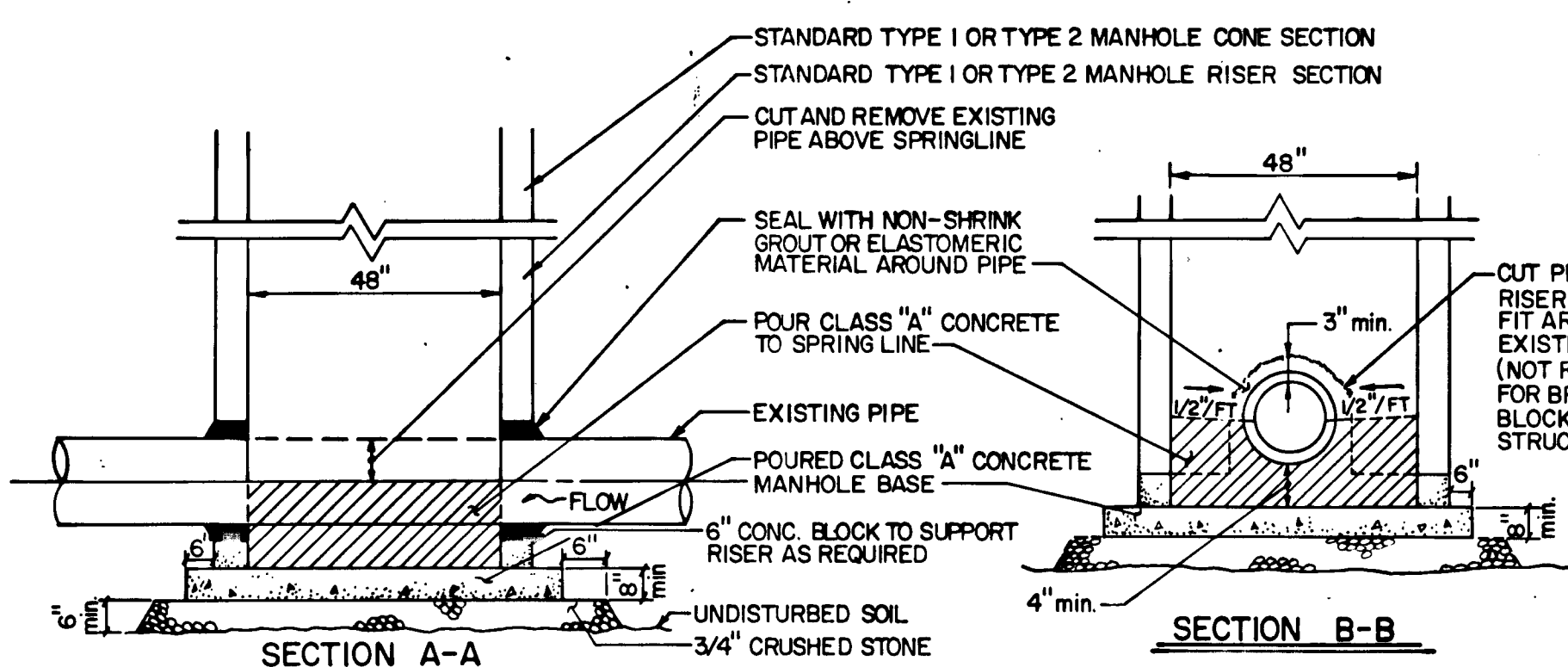
DETAIL "A"

17

SECURITY BOLTING OF
MANHOLE COVER
nts



PLAN




SECTION A-A

SECTION B-B

16

SPECIAL MANHOLE DETAIL
nts

NOTE: CHECK GRAPHIC SCALES BEFORE USING DRAWINGS

			SUPV. JAC		GRAPHIC SCALES		ROADWAY RECONSTRUCTION HARTFORD, CONNECTICUT				Hayden Wegman Consulting Engineers		CITY OF HARTFORD, CONNECTICUT DEPARTMENT OF PUBLIC WORKS BUREAU OF ENGINEERING SERVICES		TYPICAL DETAILS	
			DESIGN N/A													
			DRAWN K.H.T.													
			CHECKED J.A.C.													
			DATE 09-13-85													
REVISIONS																
NO. DATE DESCRIPTION																