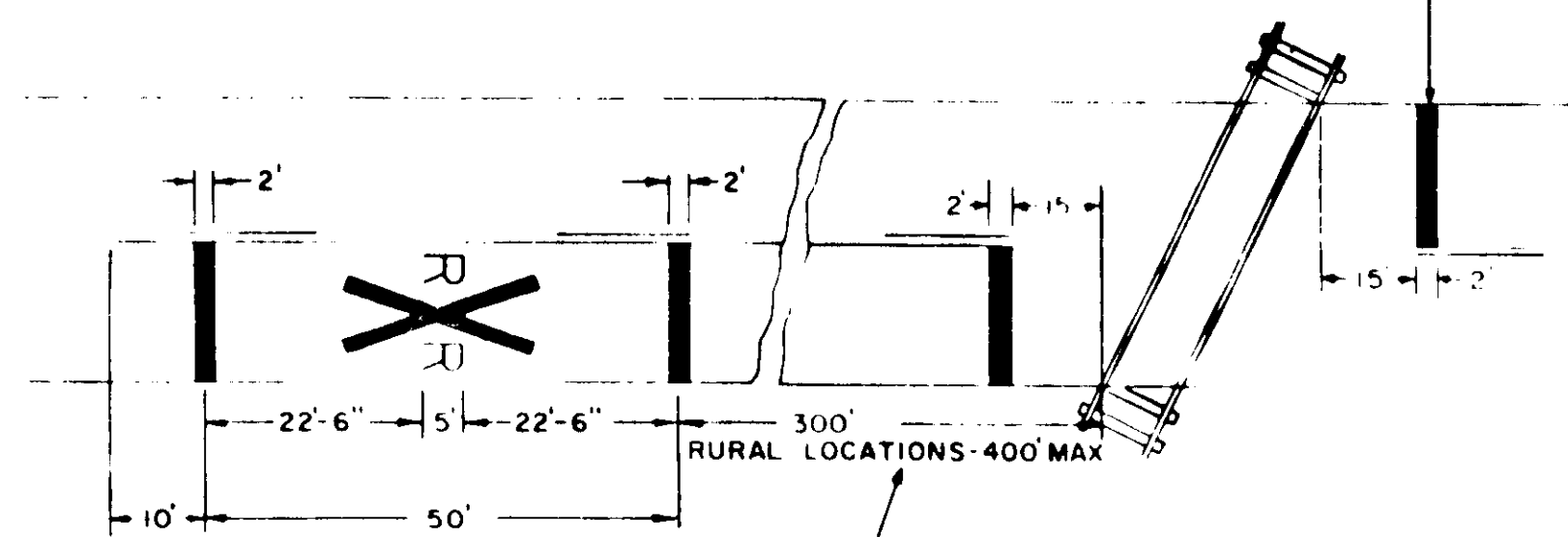


# NOTES

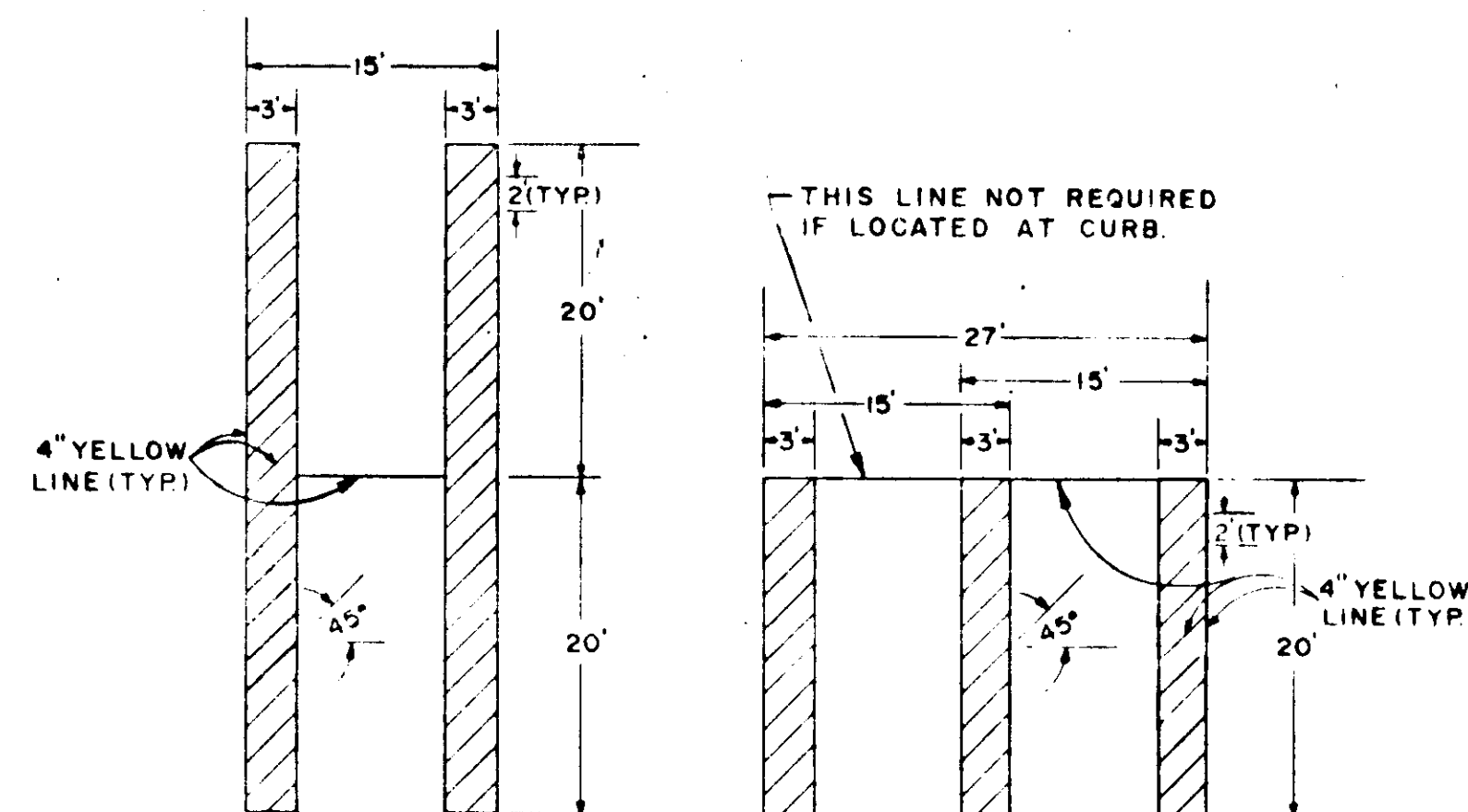
- Stop Bars to be 12" unless otherwise noted on Plans.
  - Stop Bars to be painted a minimum of 5' in advance of nearest edge of Crosswalk.
  - In absence of Marked Crosswalk the Stop Bar shall be placed at the Desired Stopping Point, in no case more than 30' or less than 5' from the nearest edge of the intersection roadway and 90° to centerline of roadway.
  - The Stop Bar shall ordinarily be placed in line with the Stop Sign. However, if the Stop Sign cannot be located exactly where vehicles are expected to stop, the Stop Bar should be placed at the Stopping Point.
- Stop bars (and centerline, when side street widths are 16' or more) to be painted on side streets within limits of Construction, unless otherwise indicated, or as directed by the Engineer.

STOP LINE PERPENDICULAR TO ROADWAY OR 8' FROM AND PARALLEL TO GATE, IF PRESENT.

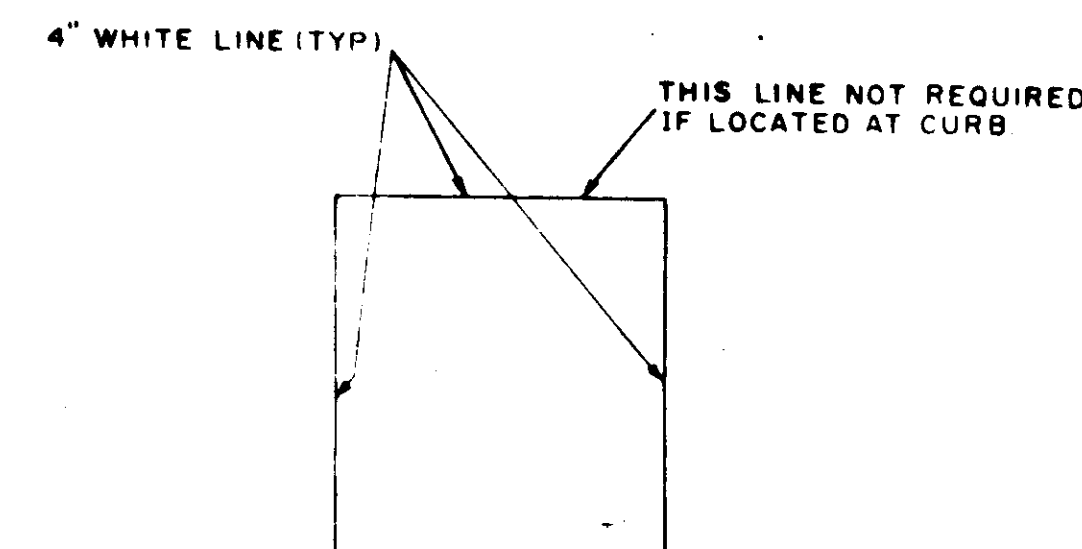


## PAVEMENT MARKINGS AT RAILROAD GRADE CROSSINGS

(WHITE)



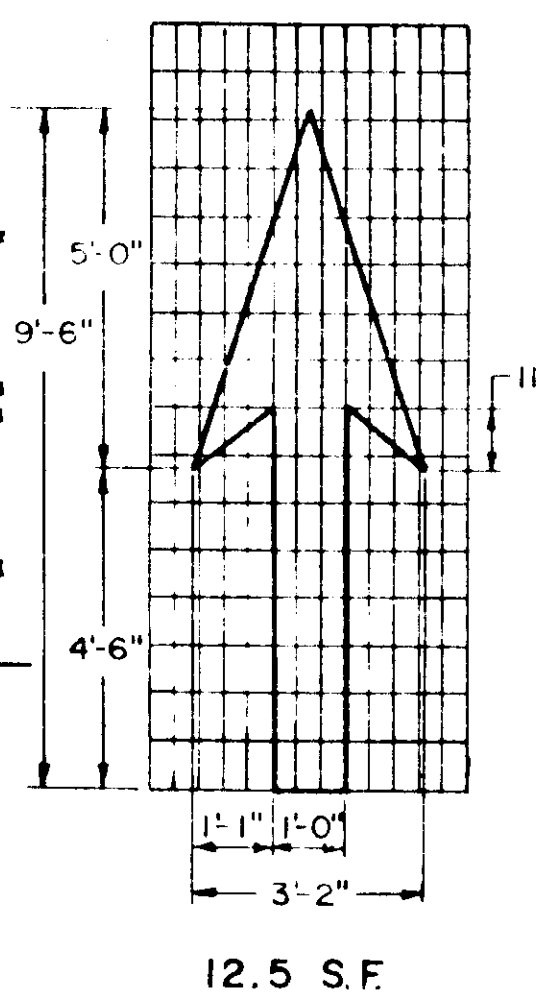
## PARKING STALLS FOR HANDICAPPED



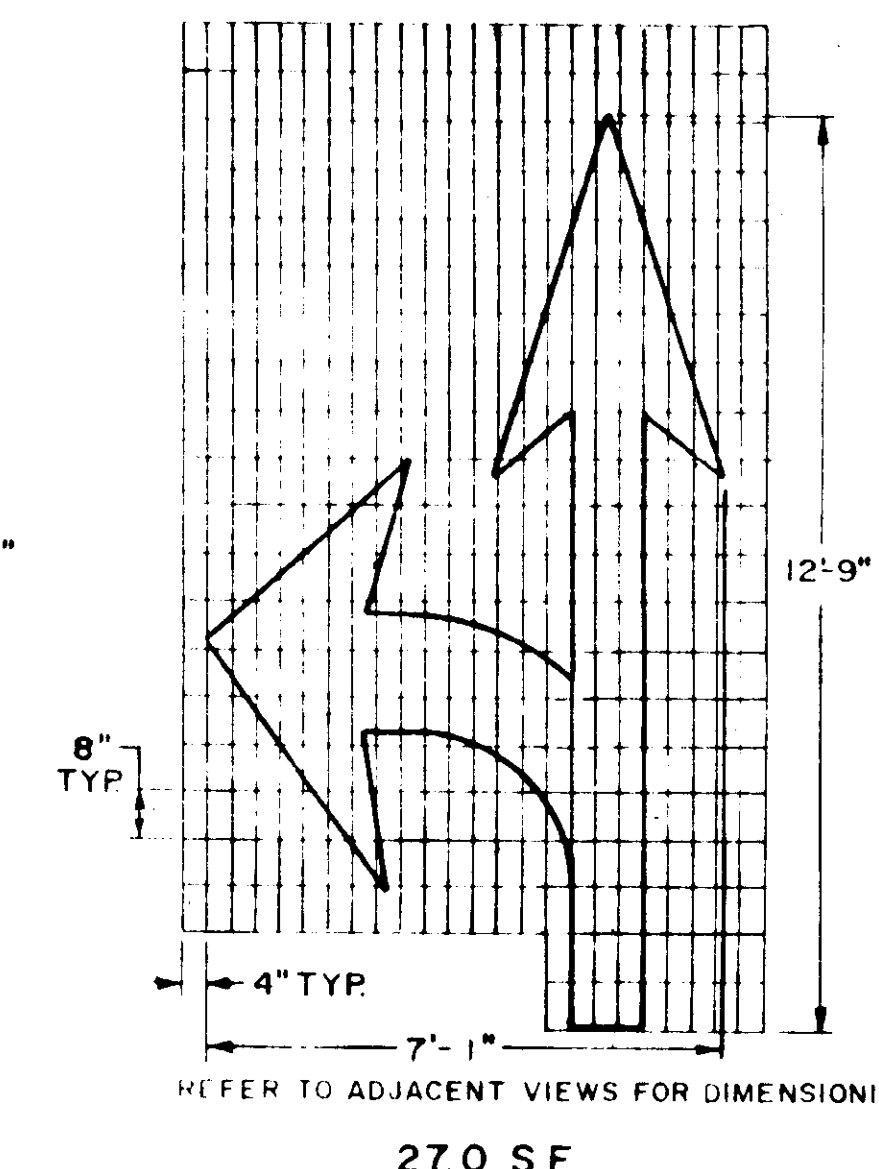
## STANDARD PARKING STALL

# NOTES

- FOR PAVEMENT MARKINGS ON A CLIMBING LANE SEE DETAIL (R) ON THE DETAIL SHEET ENTITLED "TYPICAL PAVEMENT MARKINGS FOR DIVIDED HIGHWAYS"
- SQUARE FOOTAGE INDICATED IS APPROXIMATE



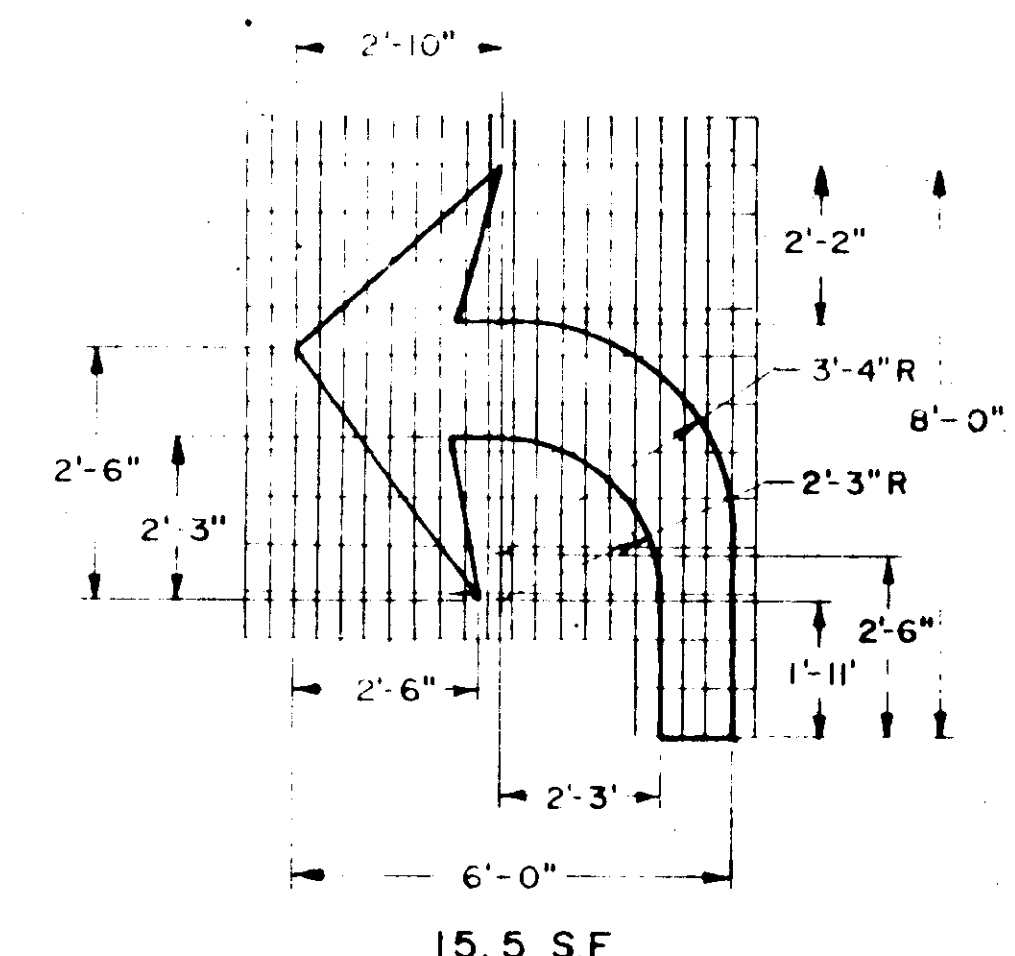
12.5 S.F.



27.0 S.F.

## PAVEMENT ARROW DETAILS

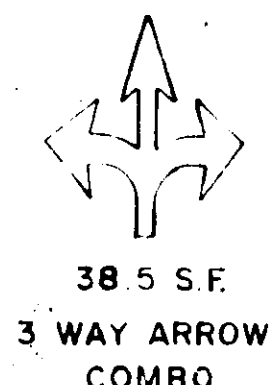
(WHITE)  
(ARROWS TO BE CENTERED IN TRAVEL LANE)



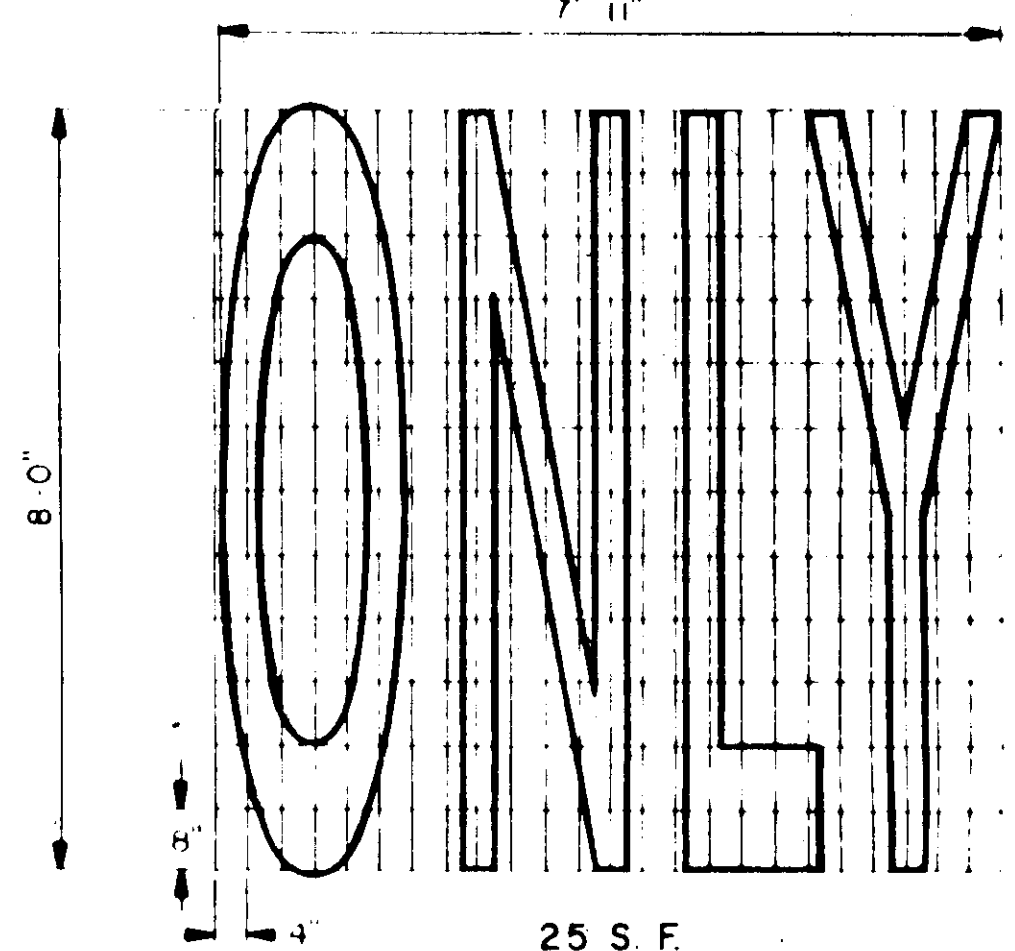
15.5 S.F.



27.0 S.F.  
LEFT & RIGHT  
ARROW COMBO.



38.5 S.F.  
3 WAY ARROW  
COMBO.



## PAVEMENT LEGEND DETAILS

(WHITE)

|   |   |  |   |  |   |   |  |
|---|---|--|---|--|---|---|--|
| <div> <div> <div>NO.</div> <div>DATE</div> </div> <div> <div>DESCRIPTION</div> <div>REVISIONS</div> </div> </div> | <div> <div>SUPV. ARW</div> <div>DESIGN MDH/AEC</div> <div>DRAWN CY/KHT/EPF</div> <div>CHECKED JAC</div> <div>DATE 5/4/85</div> </div> | <div> <div>GRAPHIC SCALES</div> <div>AS NOTED</div> </div> | <div> <div>ROADWAY RECONSTRUCTION</div> <div>HARTFORD, CONNECTICUT</div> </div> | <div> <div>STATE OF CONNECTICUT</div> <div>ALAN R. WEGMAN</div> <div>REGISTERED PROFESSIONAL ENGINEER</div> </div> | <div> <div>Hayden   Wegman</div> <div>NEW YORK • BOSTON • BUFFALO</div> <div>WEST HARTFORD • ATLANTA • MEMPHIS</div> </div> | <div> <div>CITY OF HARTFORD, CONNECTICUT</div> <div>DEPARTMENT OF PUBLIC WORKS</div> <div>BUREAU OF ENGINEERING SERVICES</div> </div> | <div> <div>TYPICAL PAVEMENT MARKINGS</div> <div>Contract No. E85-36</div> <div>Job No.- 845304</div> <div>I-2</div> </div> |
|---|---|--|---|--|---|---|--|