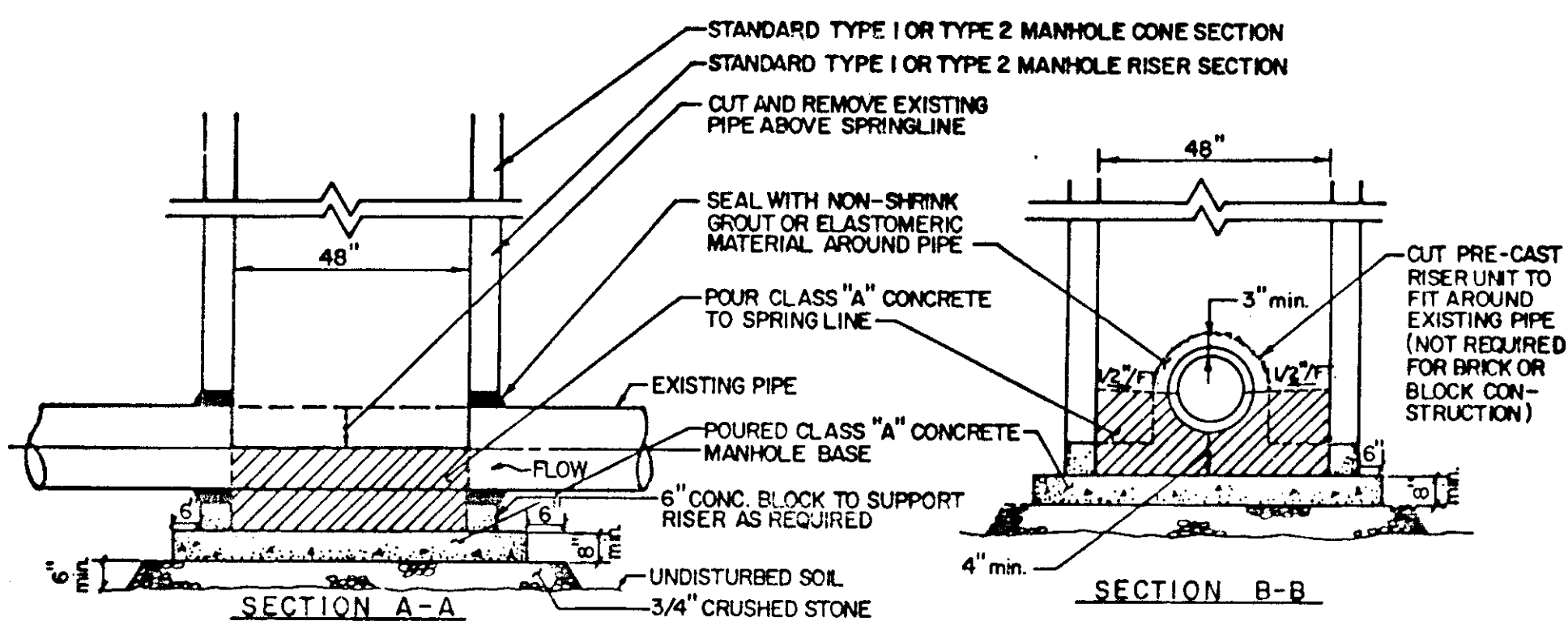
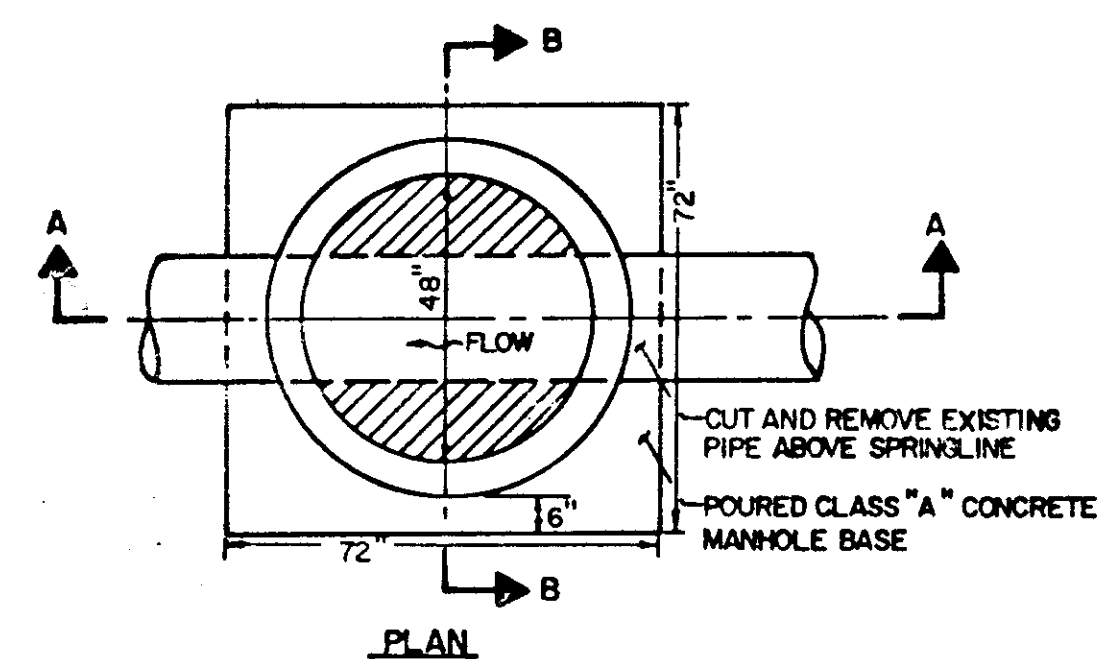
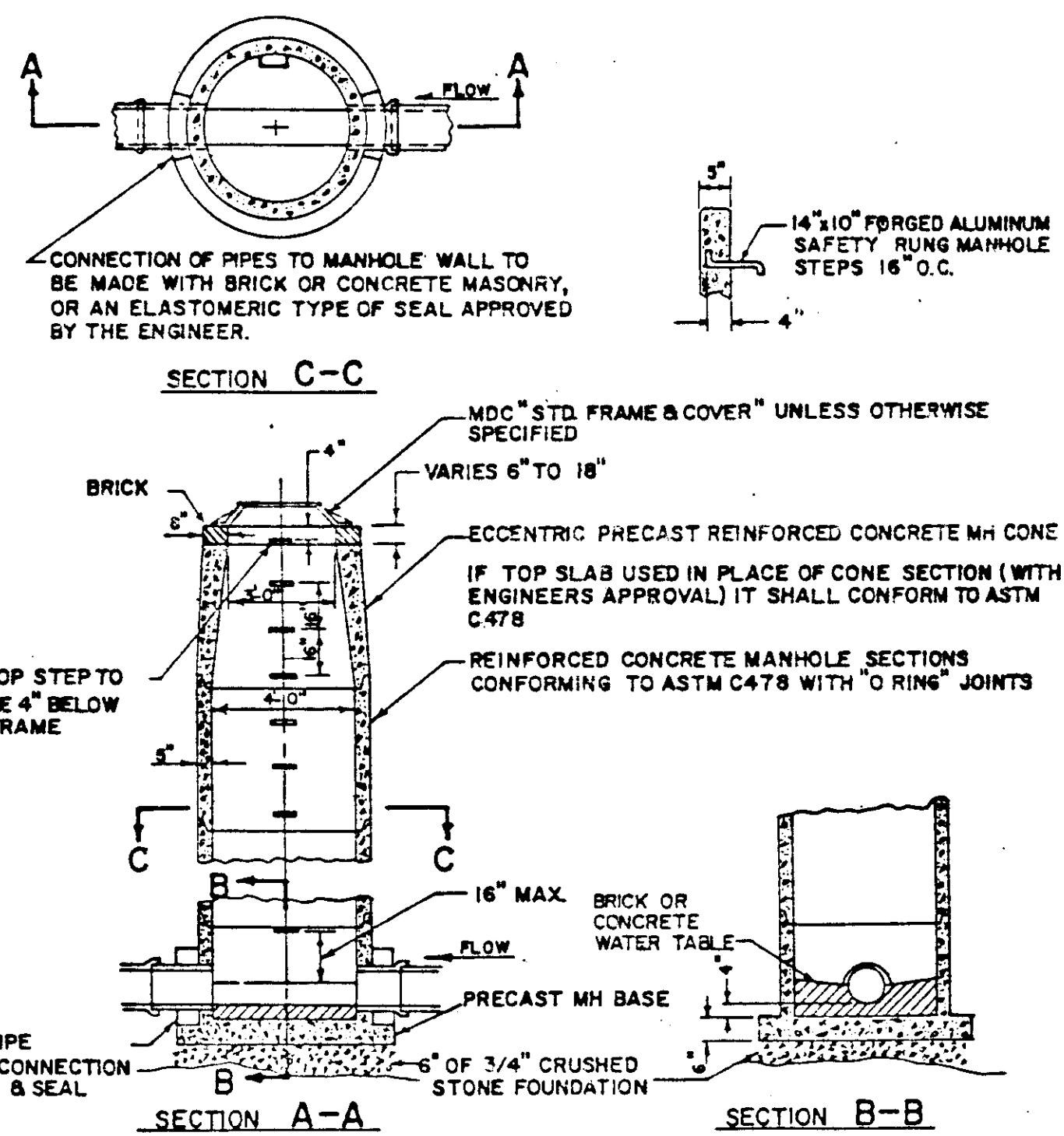


14 TYPE I MANHOLE  
nts

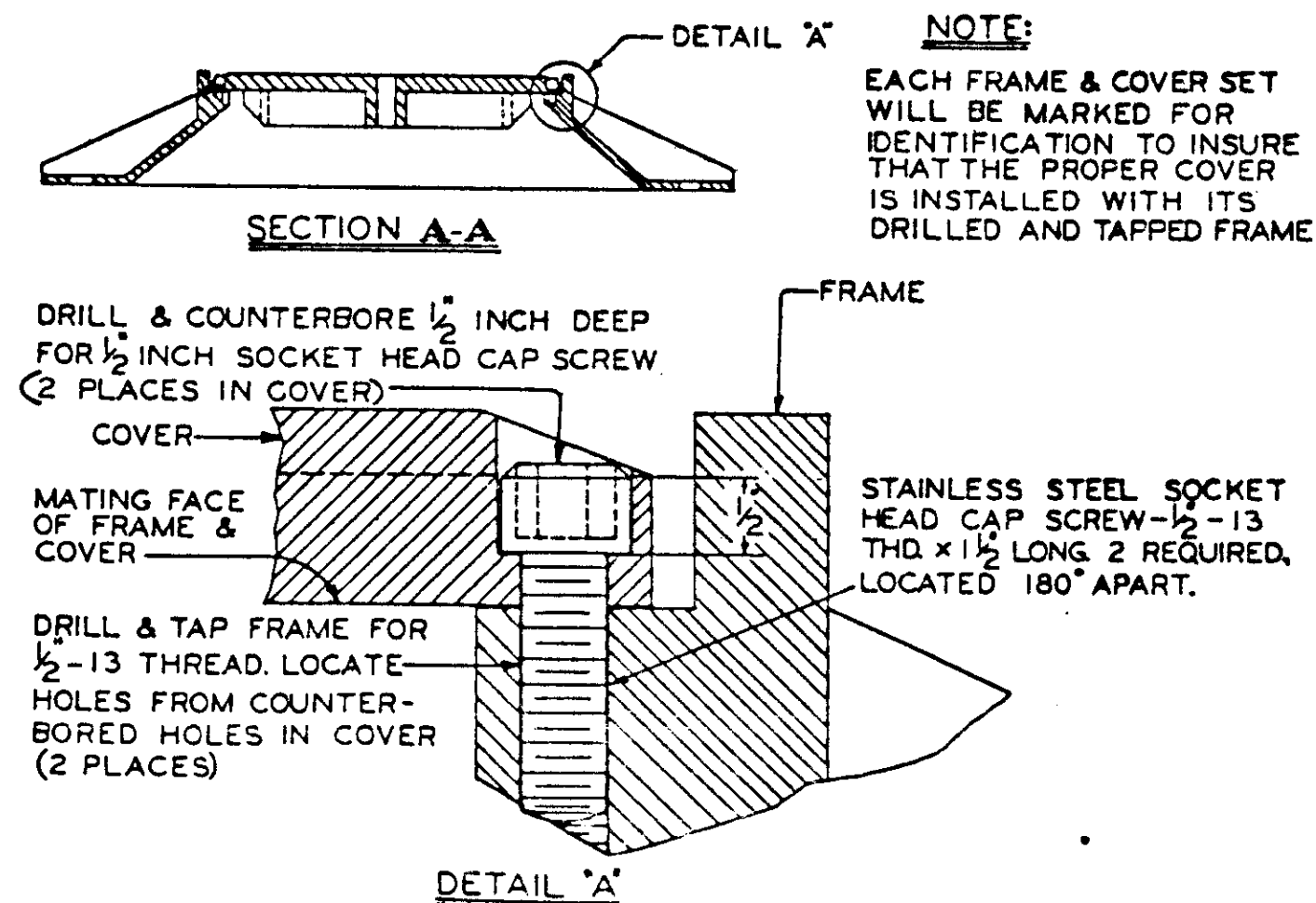
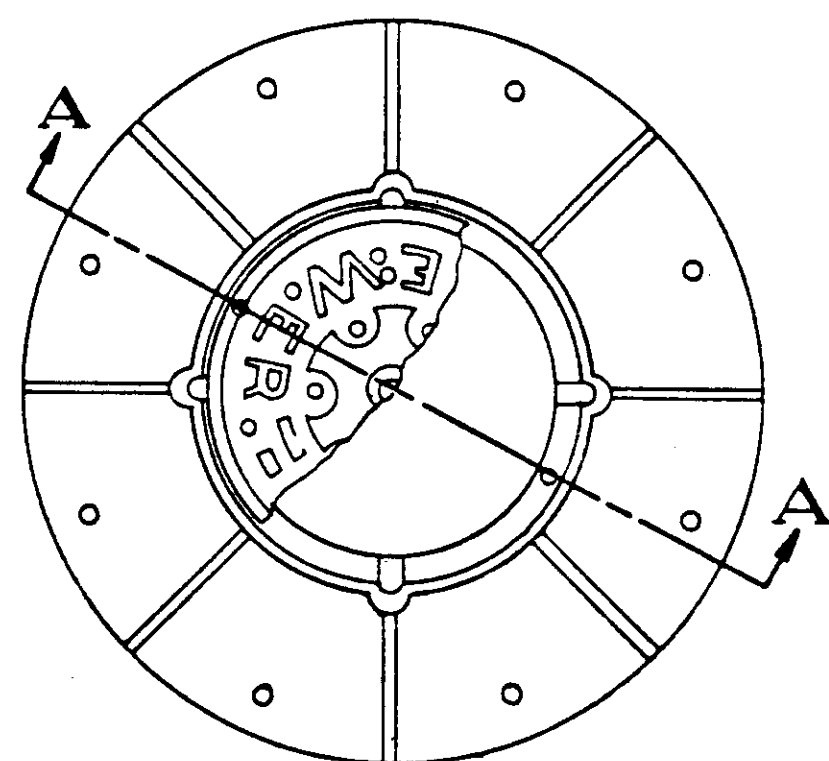


16 SPECIAL MANHOLE DETAIL  
nts

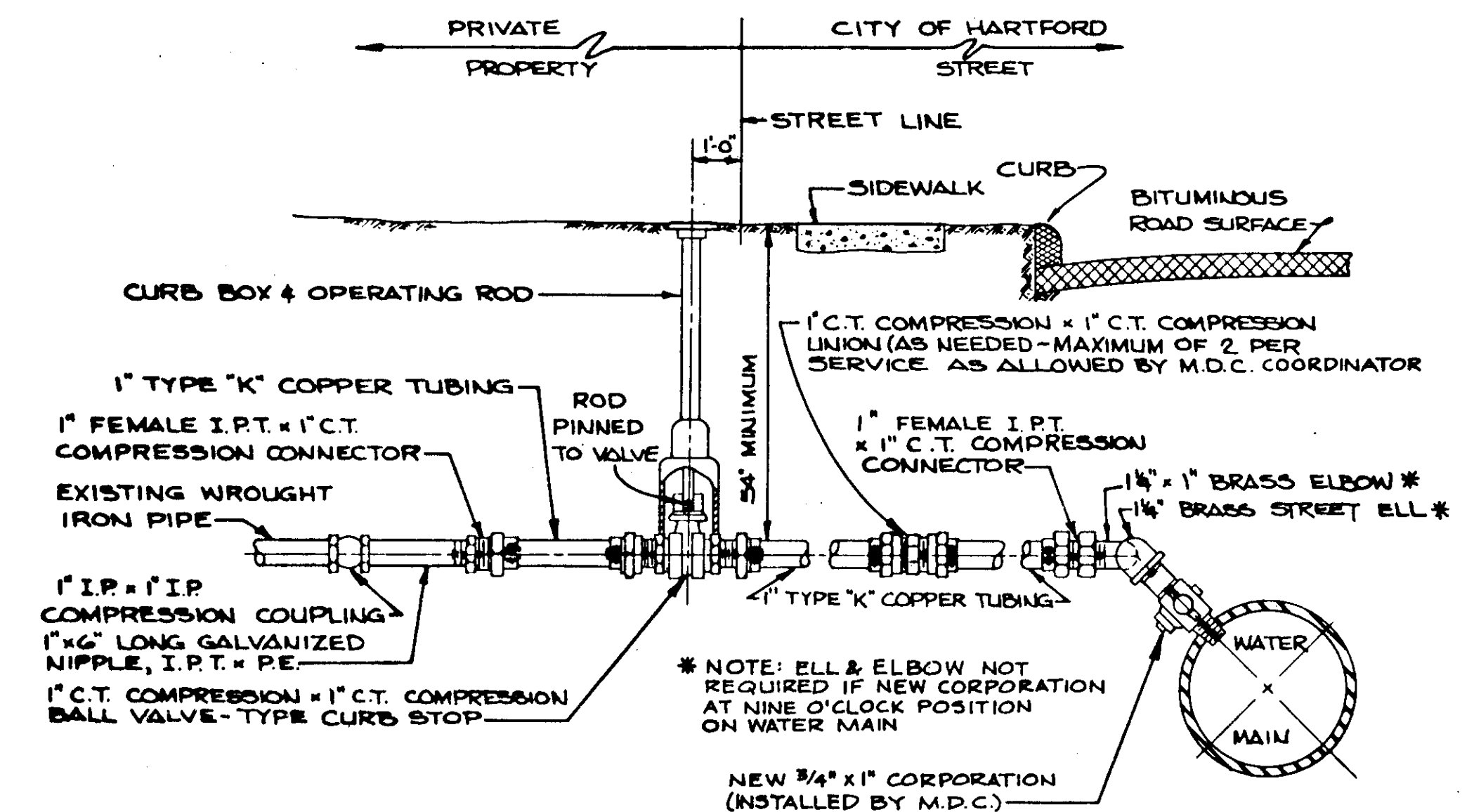


MAXIMUM SIZE OF PIPE TO BE INSTALLED IN A TYPE II MANHOLE TO BE 18"  
MAXIMUM DEPTH OF R.C. PIPE MANHOLES WITH 5" THICK WALL IS 30 FT.  
RUBBER GASKETS USED FOR "O-RING" JOINTS SHALL CONFORM TO ASTM SPEC. C443  
ALL PRECAST MANHOLE BASES SHALL COMPLY WITH THE "MINIMUM REQUIREMENTS FOR 48" DIAMETER PRECAST MANHOLE BASE"

15 TYPE II MANHOLE  
TYPICAL PRECAST MANHOLE  
nts



17 SECURITY BOLTING OF  
MANHOLE COVER  
nts



18 THE METROPOLITAN DISTRICT WATER SERVICE RENEWAL  
TYPICAL INSTALLATION DETAIL  
nts

NOTE: CHECK GRAPHIC SCALES BEFORE USING DRAWINGS

<p>NO. DATE DESCRIPTION REVISIONS</p>	<p>SUPV. ARW DESIGN RT DRAWN KHT CHECKED JAC DATE</p>	<p>GRAPHIC SCALES</p>	<p>ROADWAY RECONSTRUCTION HARTFORD, CONNECTICUT</p>	<p>STATE OF CONNECTICUT PLANNING &amp; DESIGN REGISTERED PROFESSIONAL ENGINEER</p>	<p>Hayden   Wegman Consulting Engineers NEW YORK • BOSTON • BUFFALO WEST HARTFORD • ATLANTA • MEMPHIS</p>	<p>CITY OF HARTFORD, CONNECTICUT DEPARTMENT OF PUBLIC WORKS BUREAU OF ENGINEERING SERVICES</p>	<p>TYPICAL DETAILS Contract # E85-36 Job Number: 845304 SHEET I-1A OF</p>
---------------------------------------	-----------------------------------------------------------------------	-----------------------	---------------------------------------------------------	--------------------------------------------------------------------------------------------	-----------------------------------------------------------------------------------------------------------------------	--------------------------------------------------------------------------------------------------------	-----------------------------------------------------------------------------------