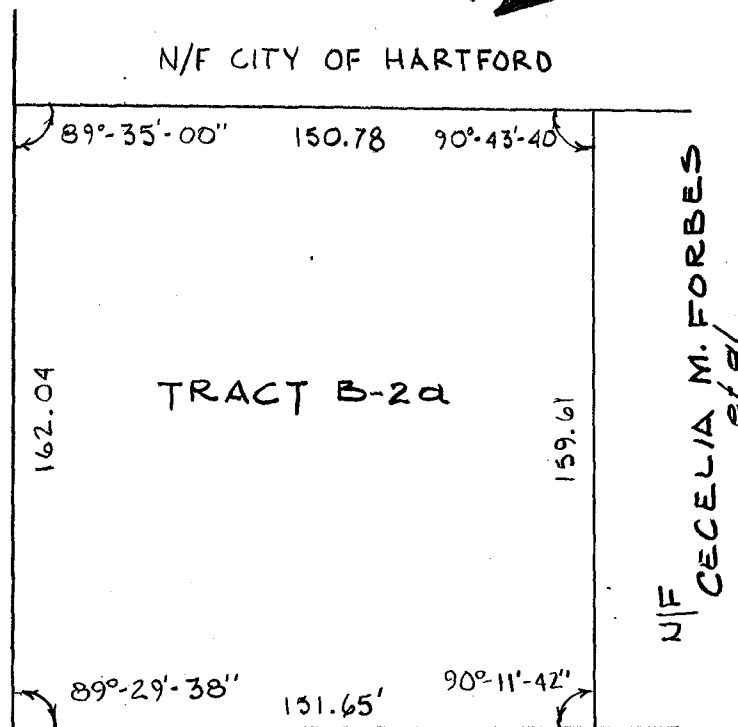


549/39

549/39

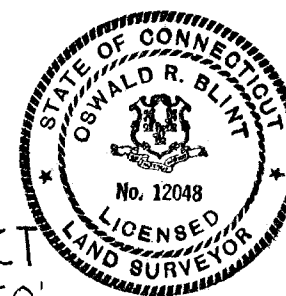
HARRISON PL.



MAP REFERENCE: CITY OF HARTFORD, CONN., DEPT. OF PUBLIC WORKS, BUREAU OF ENGINEERING SERVICES, UPPER ALBANY PROJECT, BLOCK BOUNDED BY WOODLAND ST., HOMESTEAD AVE. MILFORD ST. AND ALBANY AVE., APR 14, 1982, REVISED DEC. 12, 1984, DAYBOOK No. 010799.

I hereby certify that this map and survey were prepared in accordance with the standards of a Class A-2 survey as defined in the Code of Practice for Standards of Accuracy of Surveys and Maps, adopted December 10, 1975, as amended by the Connecticut Association of Land Surveyors, Inc.

*[Signature]*



WOODLAND ST.

TRACT B-2a  
UPPER ALBANY PROJECT  
3 APRIL 1987 1" = 50'

CITY OF HARTFORD, CONNECTICUT  
DEPARTMENT OF PUBLIC WORKS  
BUREAU OF ENGINEERING SERVICES

Daybook No. 011076

DRAWN BY P.A.T. CHECKED BY O.R.B.

549/39

549/39