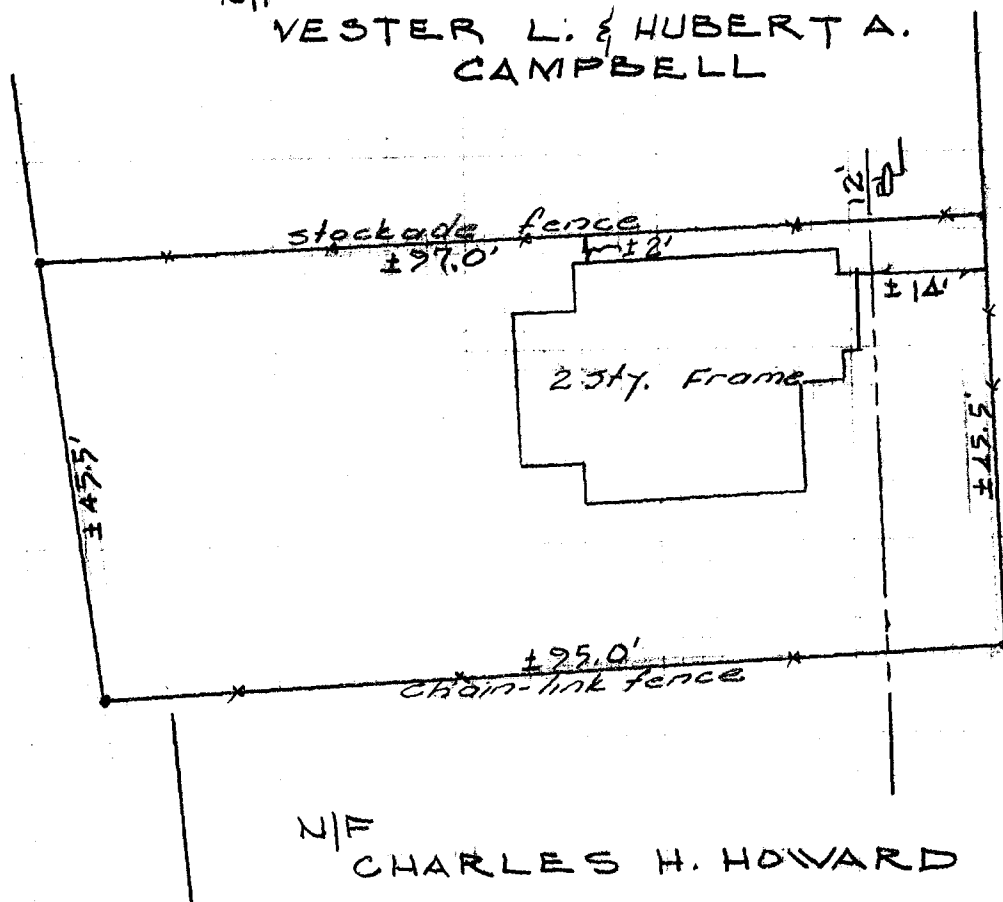


549/35

549/35

N/F CITY OF HARTFORD
HOUSING AUTHORITY

N/F
VESTER L. & HUBERT A.
CAMPBELL



BELLEVUE ST.

R 3 DISTRICT.

549/35

I hereby certify that this map and survey
were prepared in accordance with the
standards of a Class D survey as defined
in the Code of Practice for Standards of
Accuracy of Surveys and Maps, adopted
December 10, 1975, as amended by the
Connecticut Association of Land Surveyors, Inc.

Obliint

CITY OF HARTFORD, CONNECTICUT
DEPARTMENT OF PUBLIC WORKS
BUREAU OF ENGINEERING SERVICES

PLOT PLAN

399-401 BELLEVUE ST.
HARTFORD - CONN

DRAWN OB
APPR. _____

SCALE
1" = 20'

DAYBOOK NO. 011028
DATE 4. 4. 86

549/35