

THE METROPOLITAN DISTRICT BUREAU OF PUBLIC WORKS

115 BROAD STREET, HARTFORD, CONNECTICUT

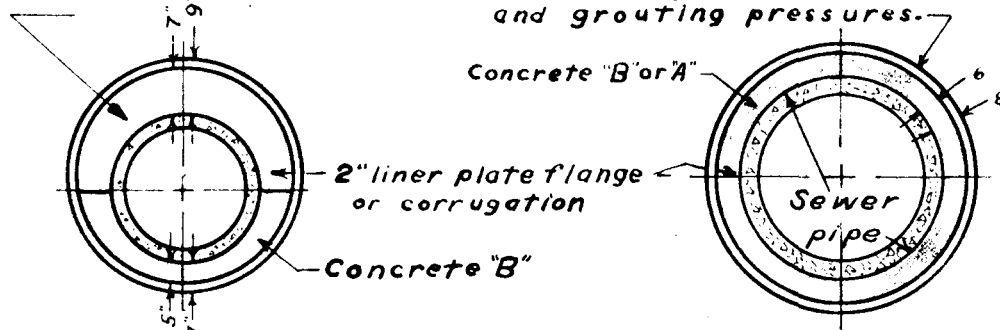
SEWER STANDARDS

SHEET L

Grout all voids outside liner plates after excavation. After concreting, grout all voids left between liner plate and pipe using methods shown for timber tunnel or equivalent

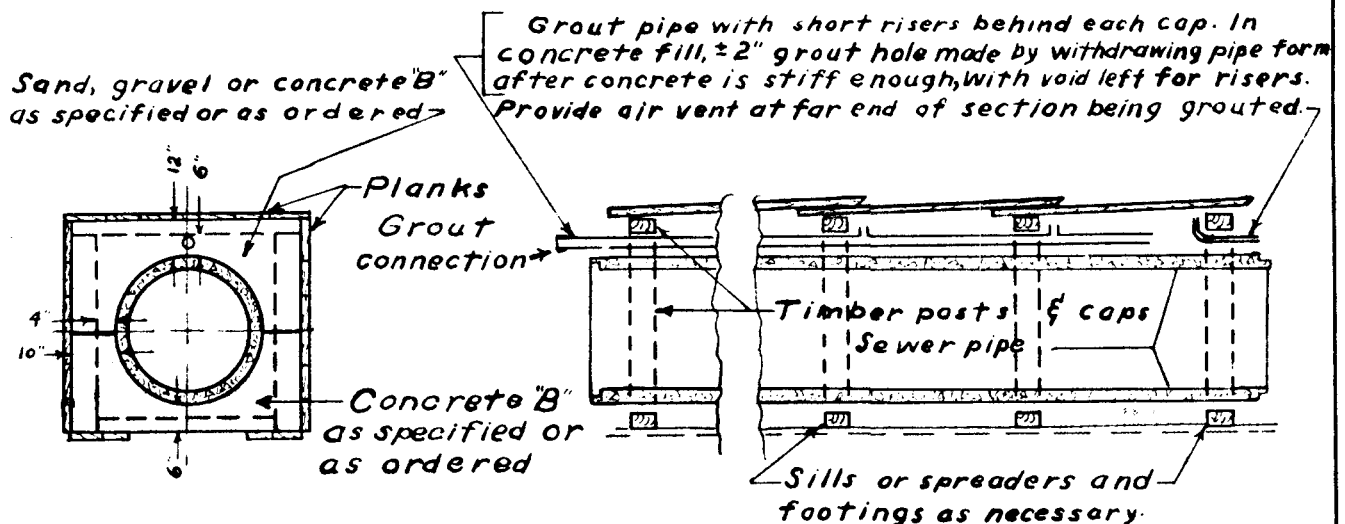
Sand, gravel, or
concrete "B"

Steel liner plates. Min. thickness $\frac{1}{8}$ " or
more as required to resist soil loads
and grouting pressures.



Clearances shown between pipe and liner plates are average. Tunnel shall be driven to within $2\frac{1}{2}$ " of true line and grade, and clearances shown shall not be reduced by more than $2\frac{1}{2}$ ". Contractor shall also provide reasonable working space if above clearances give too small a tunnel.

CROSS SECTION-SMALL PIPES CROSS SECTION-42" & LARGER PIPES STEEL LINER PLATE TUNNEL



Clearances shown between pipe and timbering are minimum. Contractor shall also provide reasonable working space if above mins. give too small a tunnel.

Grout all voids between sewer pipe and tunnel lining using methods shown or equivalent

CROSS SECTION LONGITUDINAL SECTION TIMBER LINED TUNNEL TYPICAL SECTION-PIPE SEWER IN TUNNEL

Scale: 1" = 4'

SERIAL NO. 1Q157

1 Q157

OP
1 Q157

JUNE 1950