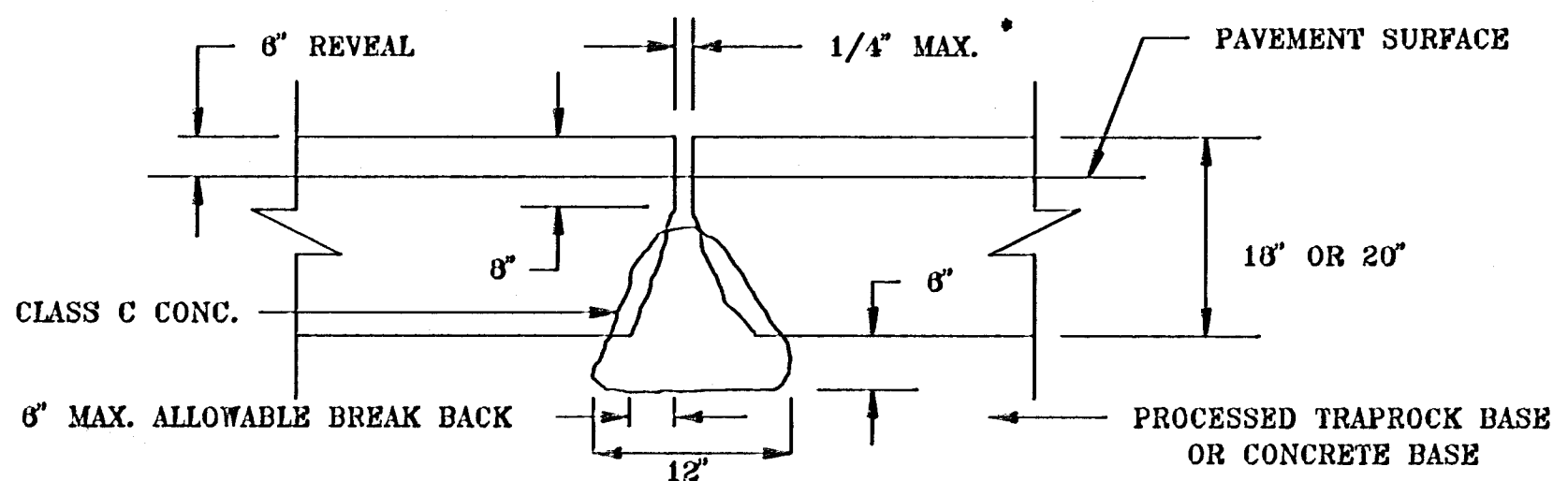
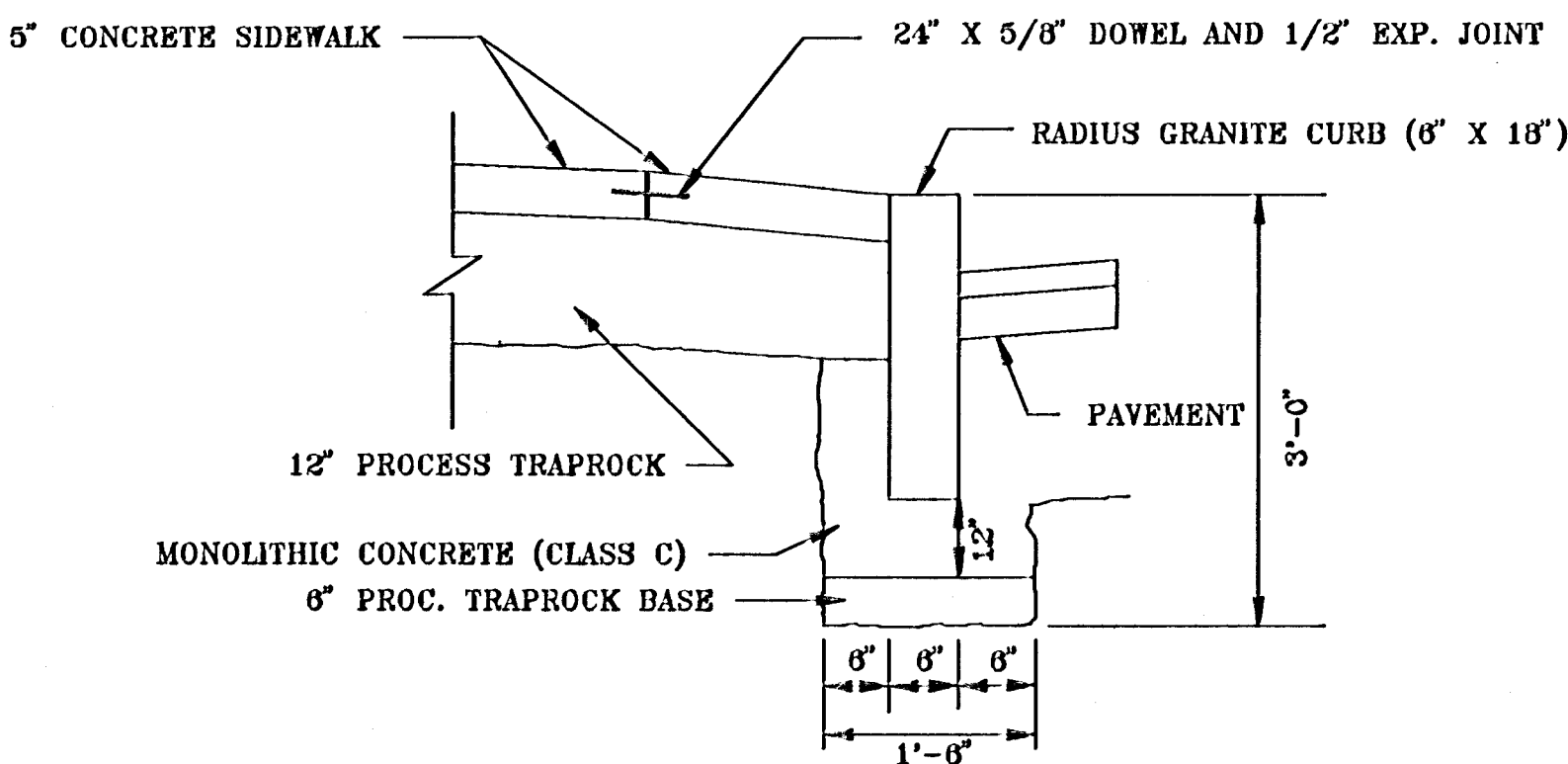


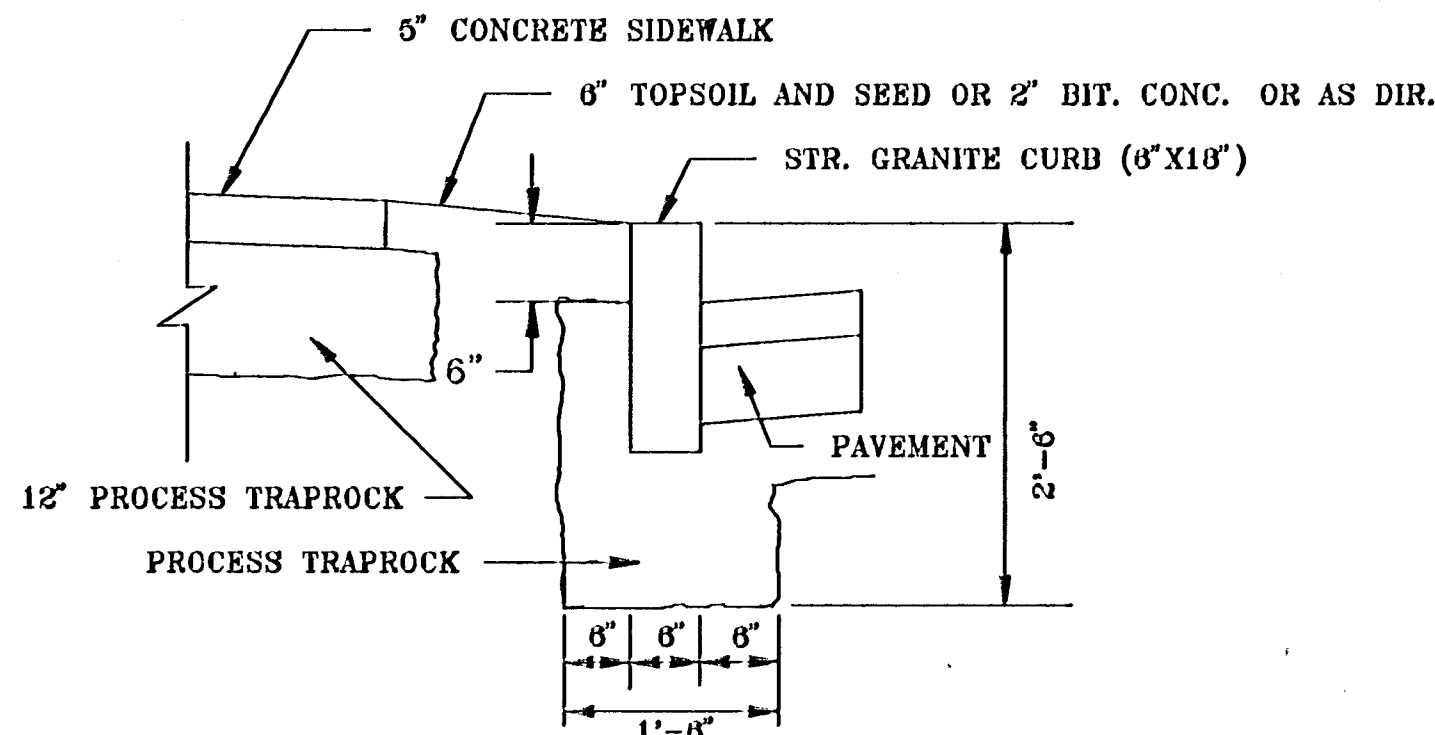
F.H.W.A. REGION NO.	STATE	TOWN	FED. AID PROJECT NO.	PROJ. NO.	YEAR	ROUTE NO.	SHEET NO.	TOTAL SHEETS
1	CONN	1	STPH-1779(8)	63-510	1995		4	15



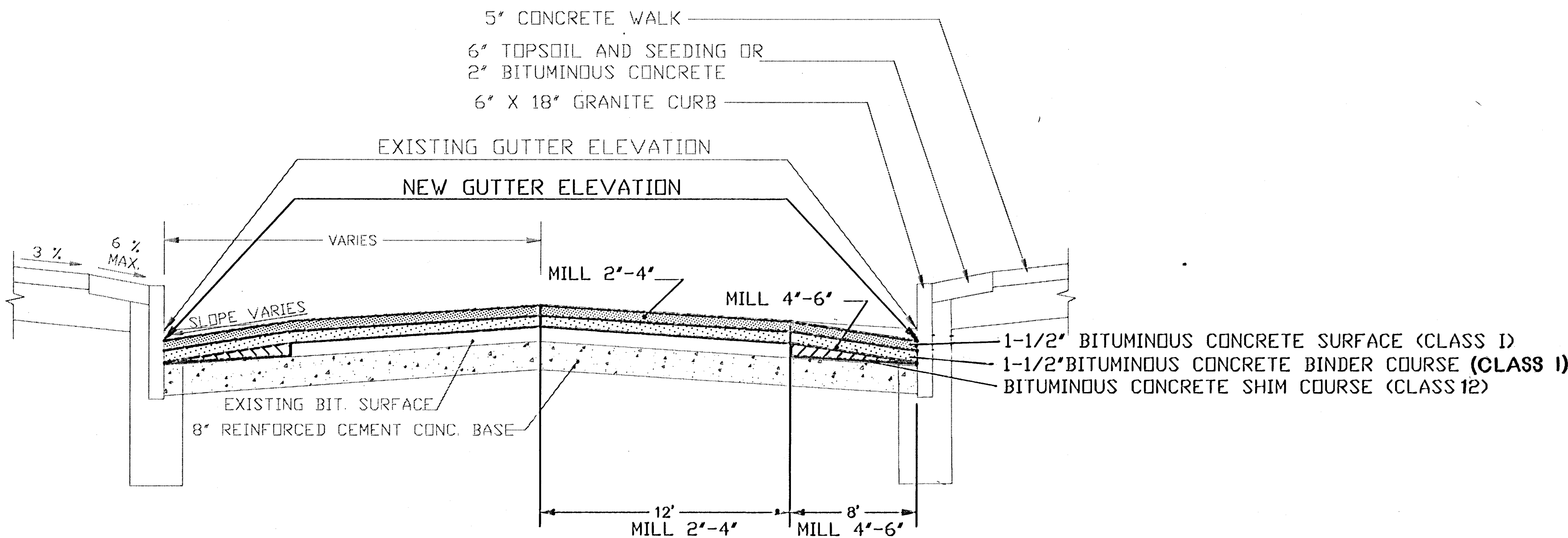
ELEVATION
TYPICAL JOINT DETAIL FOR
STRAIGHT GRANITE CURB
* NOTE: CURB JOINT TO BE CAULKED
WITH TT-S-230 SEALING COMPOUND.



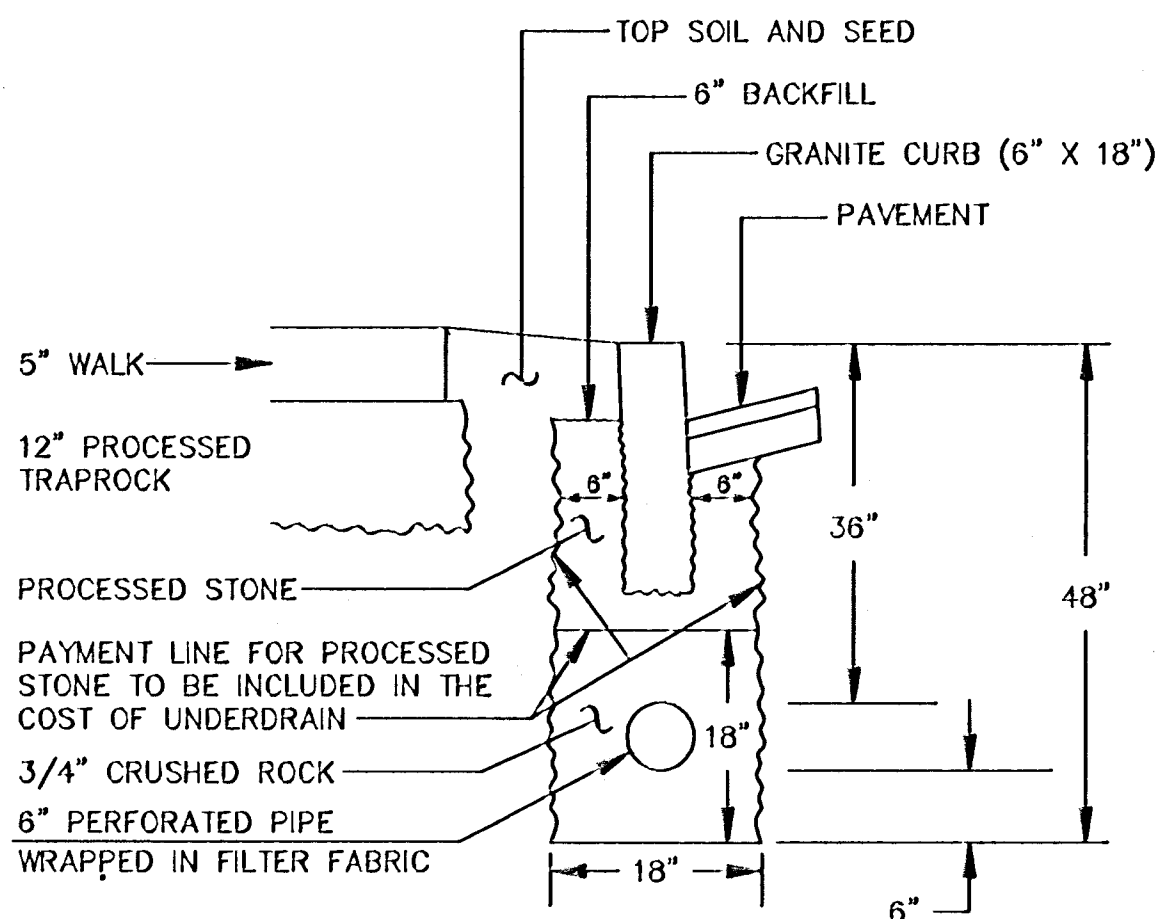
RADIUS GRANITE CURB SECTION



STRAIGHT GRANITE CURB SECTION



TYPICAL RIGID-BASE PAVEMENT WITH GRANITE CURB SECTION
NOT TO SCALE



CURB UNDERDRAIN
FOR GRANITE CURB

CONSTRUCTION NOTES

1. WHEN EXCAVATING CLOSE TO TREES, USE ONLY HAND TOOLS. CARE SHALL BE TAKEN TO ENSURE THAT TREE ROOTS ARE NOT DAMAGED IN ANY WAY. THE INSPECTOR SHALL BE NOTIFIED IMMEDIATELY WHENEVER TREE ROOTS ARE ENCOUNTERED. FURTHER EXCAVATING AT THAT LOCATION SHALL BE AS DIRECTED BY THE INSPECTOR.
2. TOP OF CURB SHALL BE 6" ABOVE GUTTER GRADE UNLESS OTHERWISE NOTED.

CITY OF HARTFORD, CONNECTICUT
DEPARTMENT OF PUBLIC WORKS
TRANSPORTATION SERVICES BUREAU

CITY OF HARTFORD
STANDARD CONSTRUCTION
DETAILS SHEET 2

SUBMITTED <i>[Signature]</i> PROJECT ENGINEER	RECOMMENDED <i>[Signature]</i> MANAGER	APPROVED <i>[Signature]</i> CITY ENGINEER
DRAWN MK	SCALE: N.T.S.	DAYBOOK NO. 010233
CHECKED MK	DATE	SHEET 4 OF 15
	FILE NAME 95-08DT2.dwg	