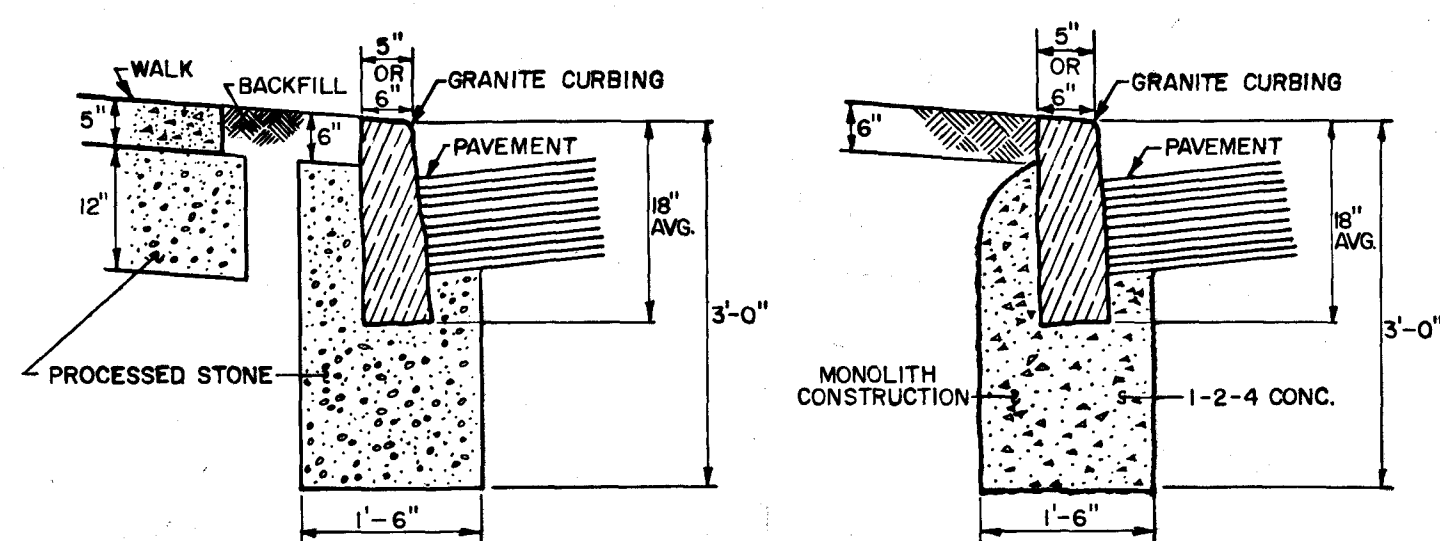
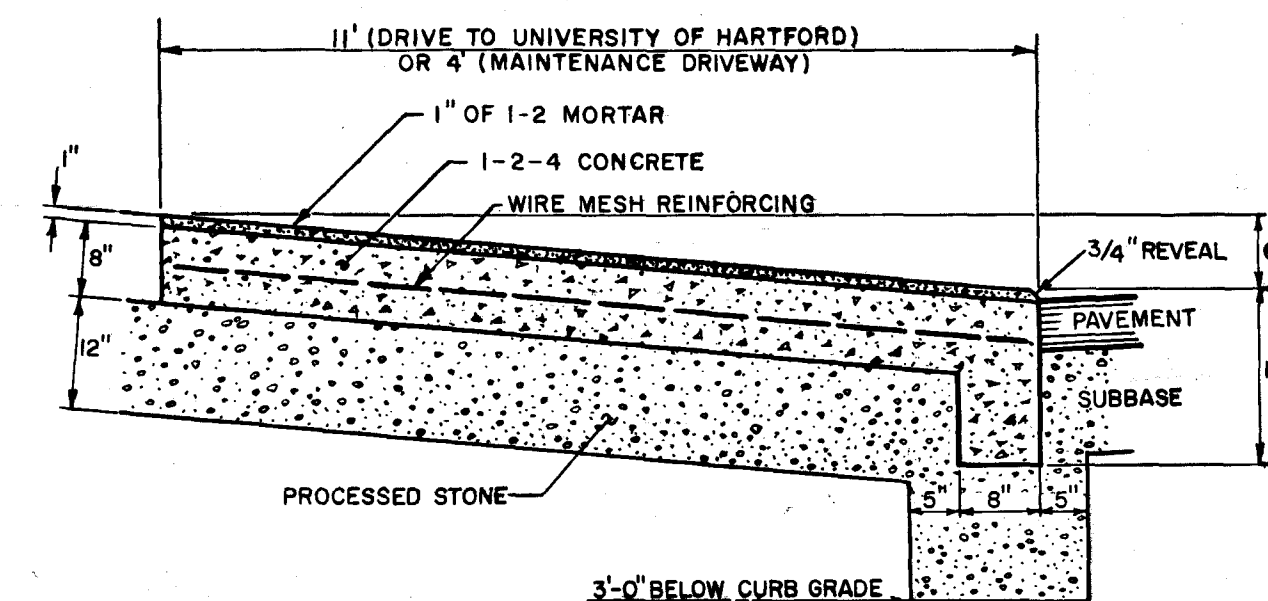


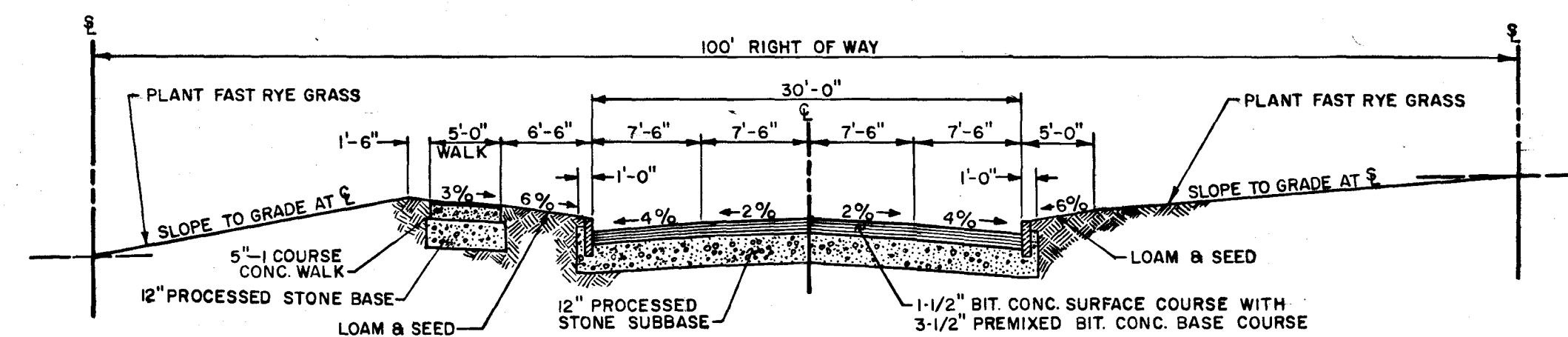
**MARK TWAIN DRIVE
ROADWAY SECTION**
NOT TO SCALE



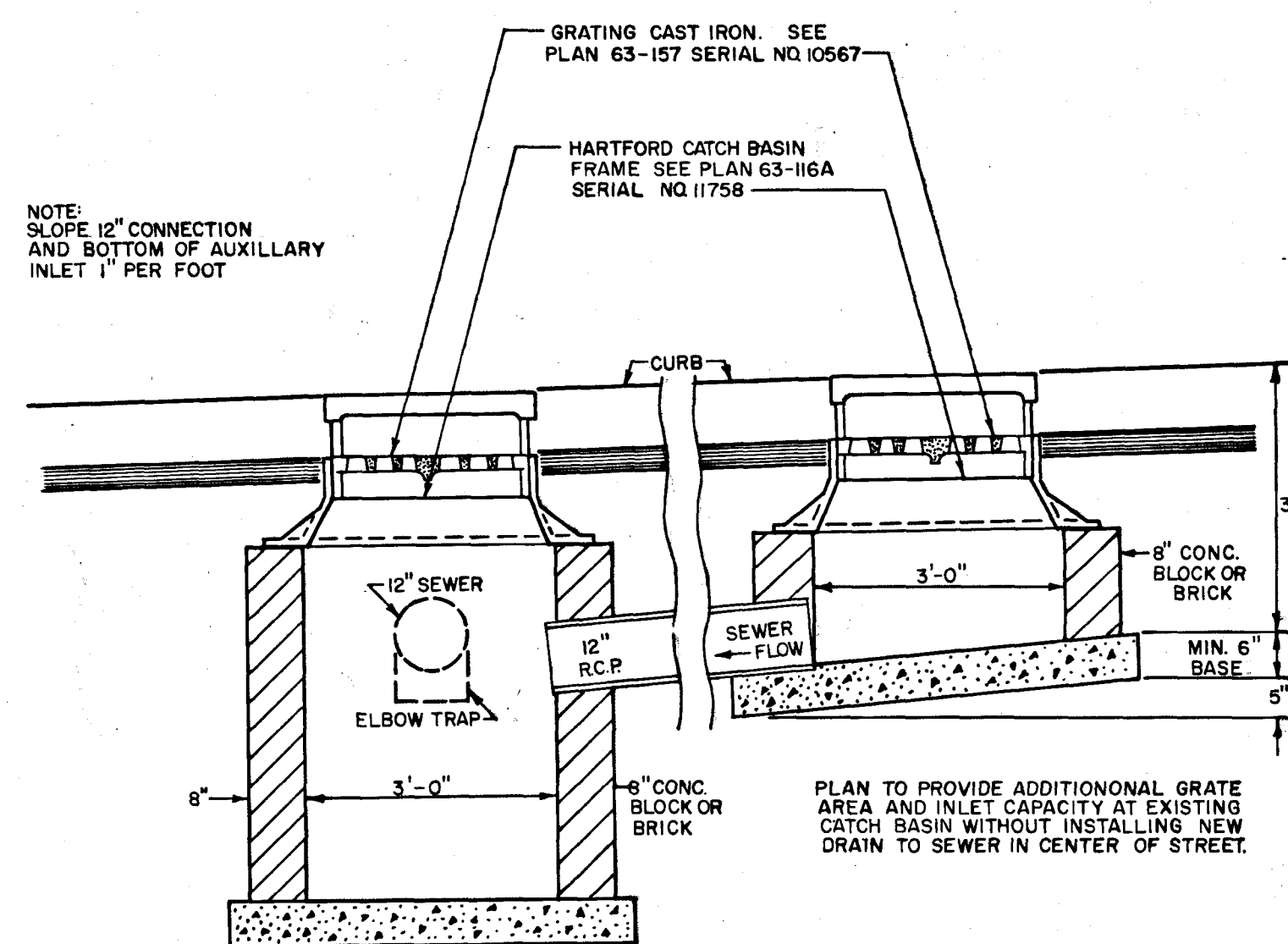
STRAIGHT CURB SECTIONS
NOT TO SCALE



**CONCRETE RAMP
SECTION FOR DRIVEWAYS**
NOT TO SCALE



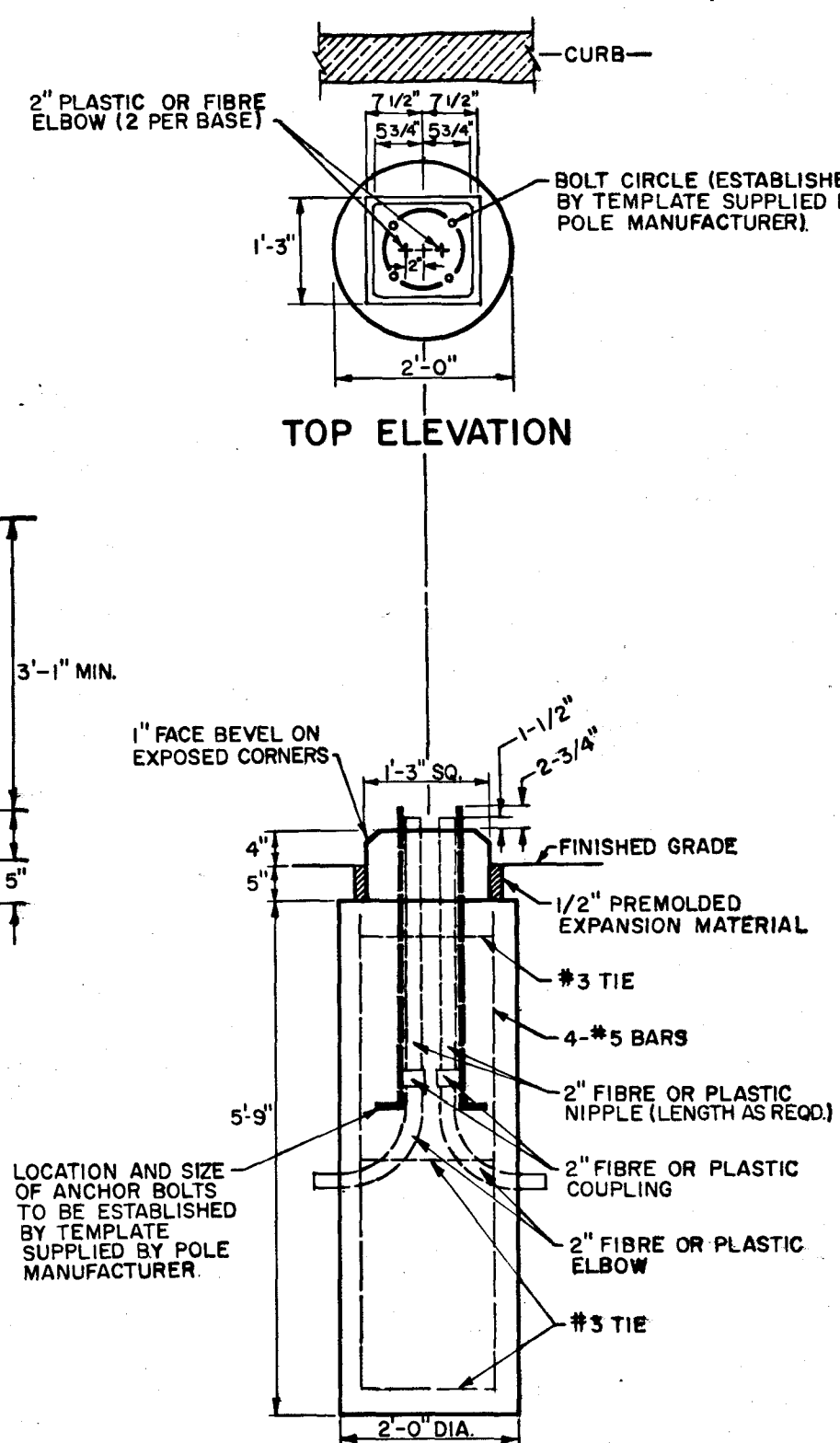
TOWER AVENUE - ROADWAY SECTION
NOT TO SCALE



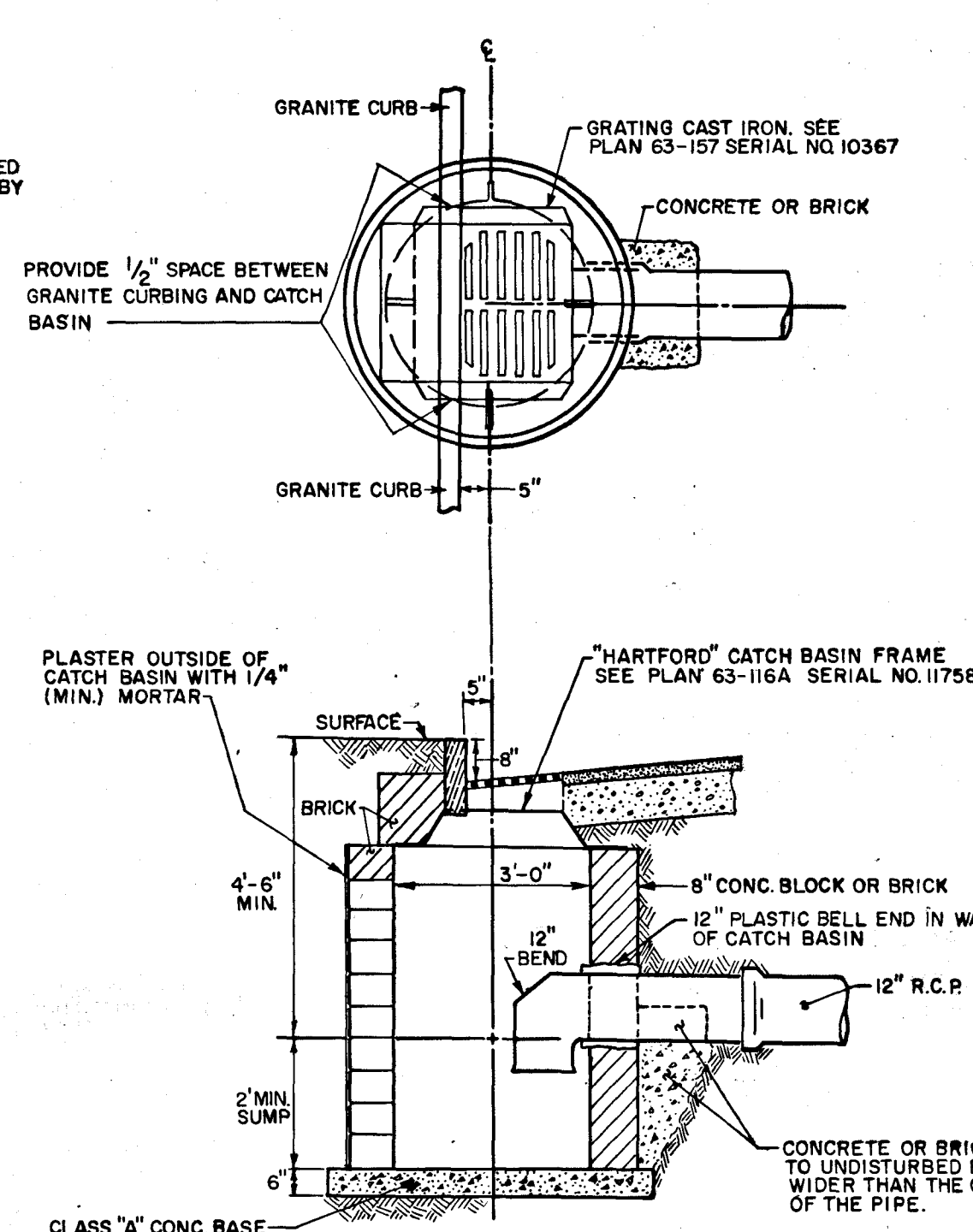
STANDARD CATCH BASIN

AUXILIARY INLET

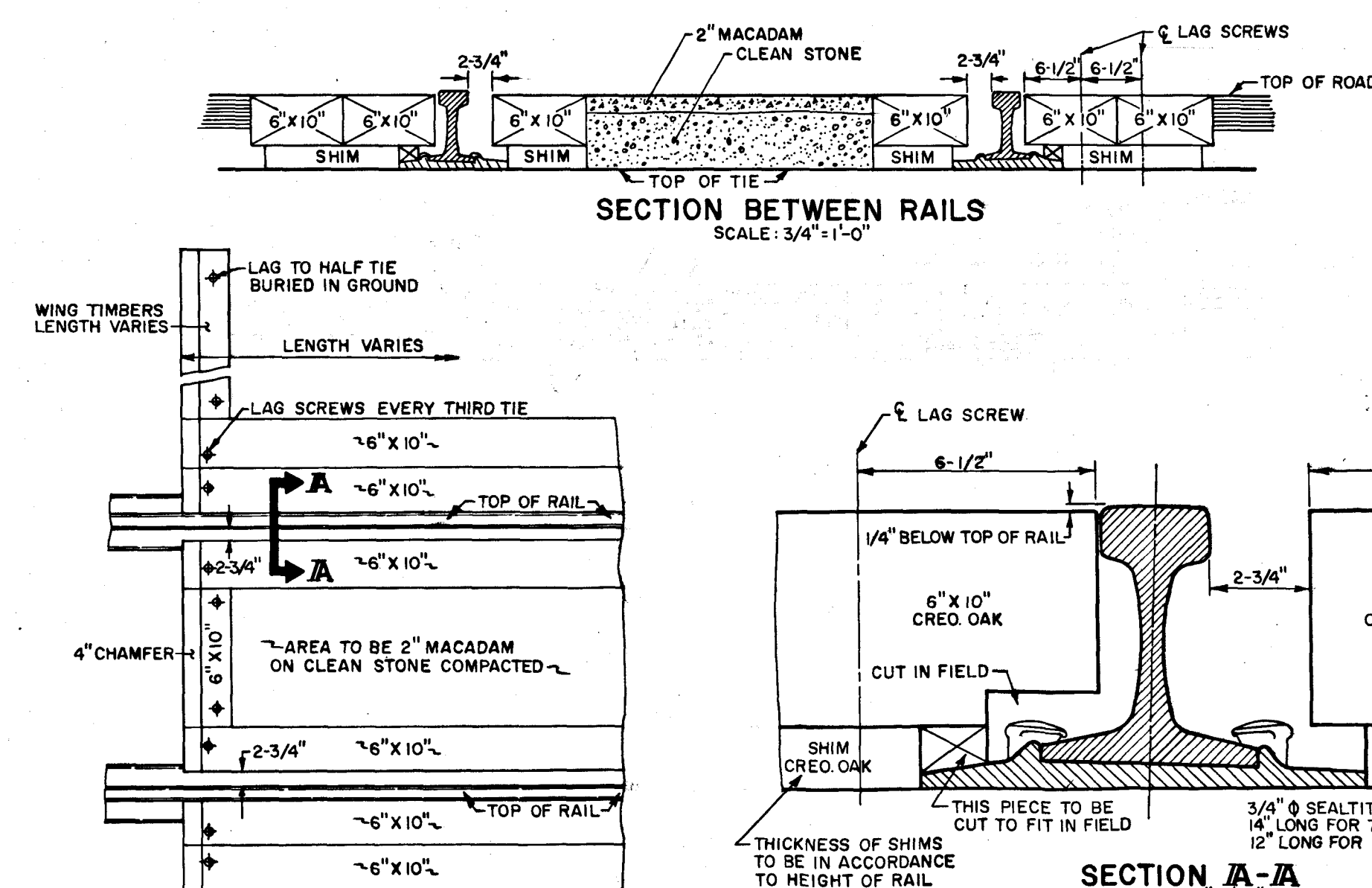
DETAIL
SCALE: 1"=2'



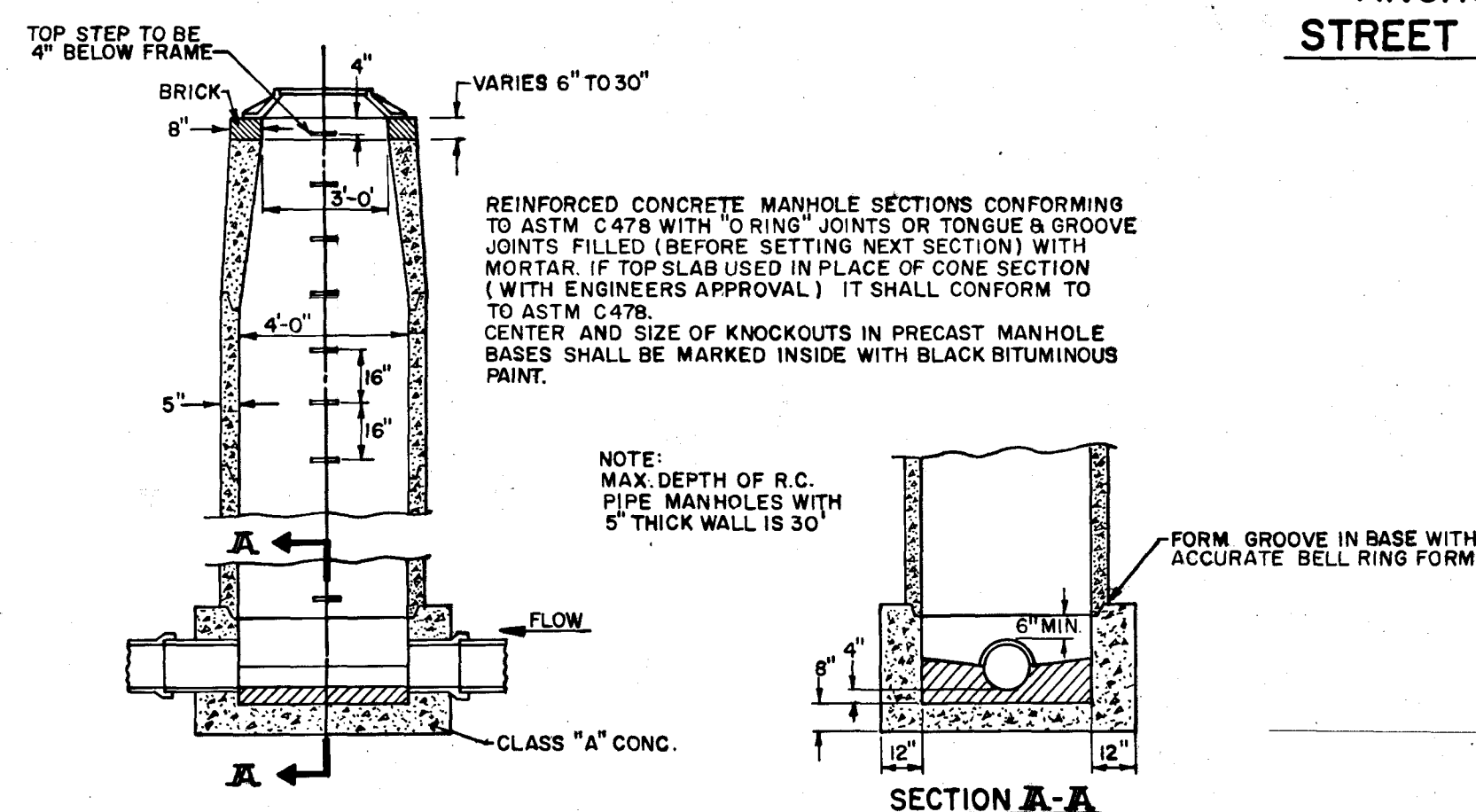
**ANCHOR BASE ORNAMENTAL
STREET LIGHT POLE FOUNDATION**
NOT TO SCALE



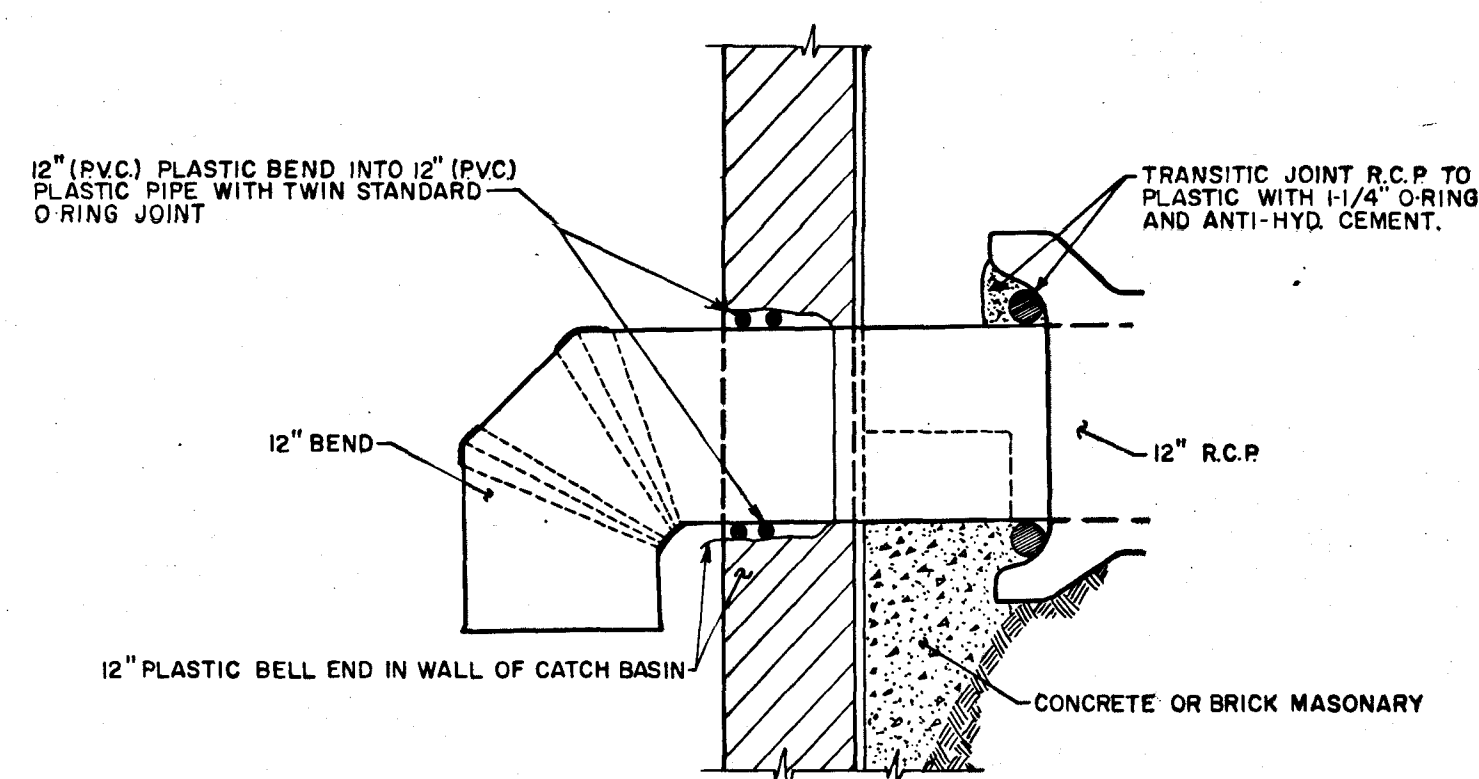
**HARTFORD TYPE
STANDARD CATCH BASIN DETAIL**
NOT TO SCALE



RAILROAD-HIGHWAY CROSSING



STORM MANHOLE SECTION
NOT TO SCALE



JOINT-DETAIL-SECTION
SCALE: 1"=1'-0"

CITY OF HARTFORD, CONNECTICUT
DEPARTMENT OF PUBLIC WORKS
BUREAU OF ENGINEERING SERVICES

DETAILS

SUBMITTED	RECOMMENDED	APPROVED
DIVISION ENGINEER	CHIEF OF ENG. SERV. ASST. DIR. OF CITY	
DRAWN J.A.P.	SCALE DAYBOOK NO.	
CHECKED F.A.H.	AS SHOWN	DATE 5-20-75



MORTON S. FINE & ASSOCIATES, INC.
711 Cottage Grove Rd., Bloomfield, Conn.